

Germain Honda of College Hills



HONDA INSTALLATION INSTRUCTIONS

Accessory

TOWING KIT
P/N 08L92-T6Z-100

Application

2020 RIDGELINE MODEL
SERIES

Publications No.

VERSION 1

Issue Date

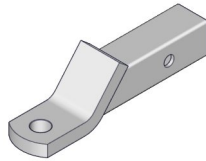
JUL 2022

PARTS LIST

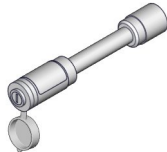
Receiver cover



Ball mount



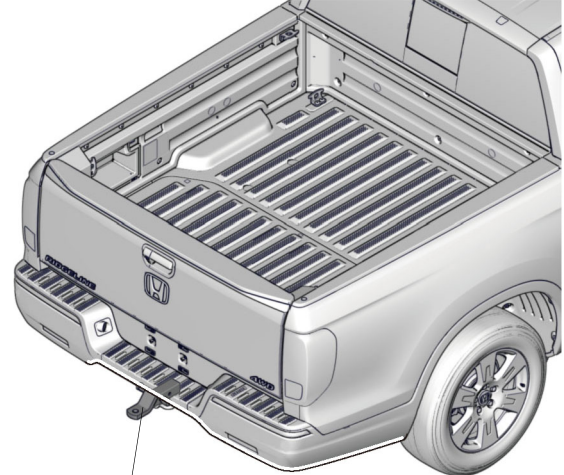
Lock pin



2 Keys



Illustration of the Towing Kit in the Vehicle



BALL MOUNT

QE03004CA

Germain Honda of College Hills

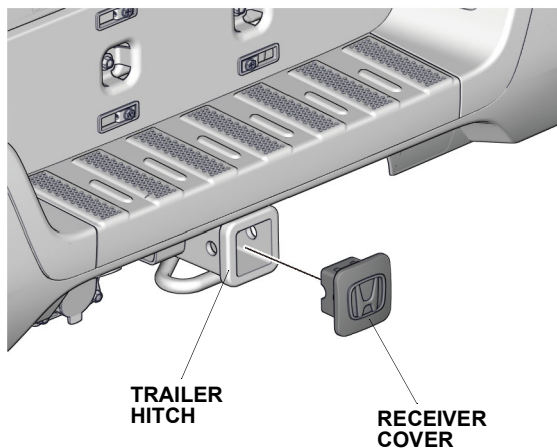
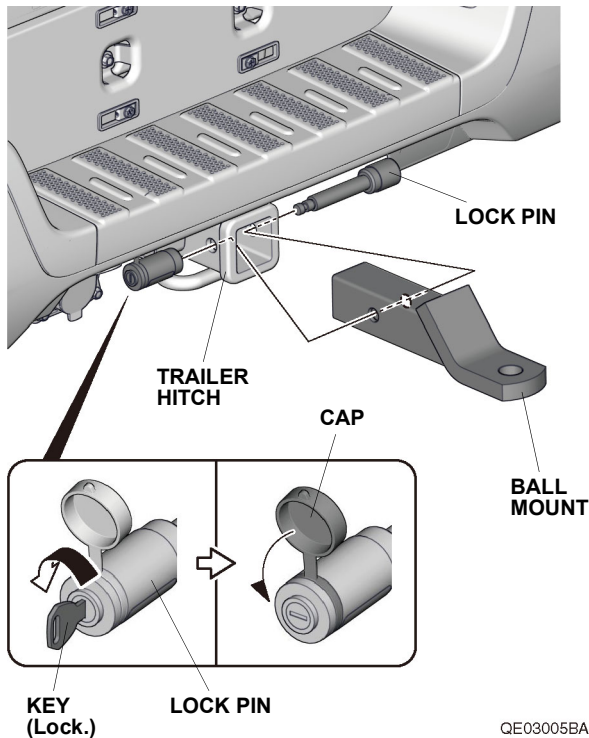
INSTALLATION

Installing the Towing Kit

NOTE:

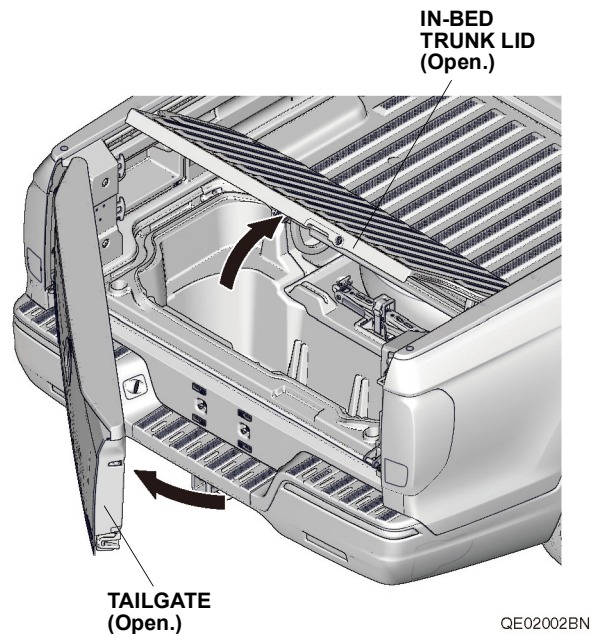
- Leave a copy of these installation instructions in the vehicle.
- Be careful not to damage the body.
- Whenever you remove the lock pin and ball mount, follow the procedures called out in "Storing the Towing Kit" section below.

Install the ball mount into the trailer hitch and lock it in place with the lock pin. Cover the key slot with the lock pin cap. Store the receiver cover in the tool box.

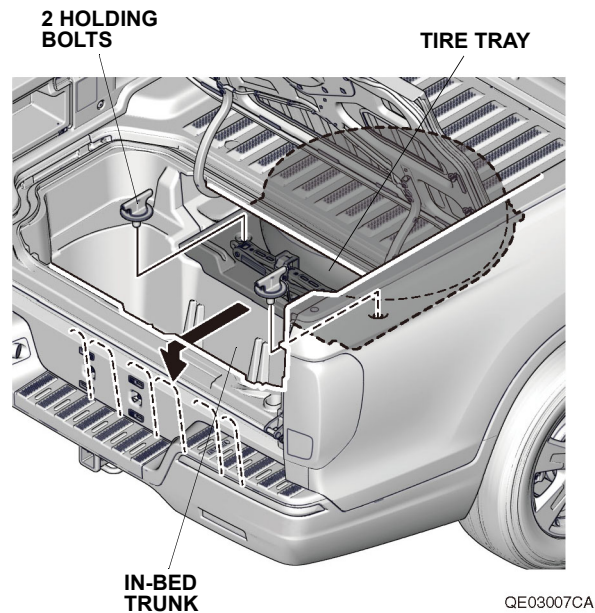


Storing the Towing Kit

1. Open the tailgate, then open the in-bed trunk lid.



2. Remove the two holding bolts, pull back the tire tray, and rest it on the back edge of the in-bed trunk.



Germain Honda of College Hills

3. Store the towing kit in the tool box as shown. Install the tire tray.

