

Germain Honda of College Hills



INSTALLATION INSTRUCTIONS

Accessory

TONNEAU COVER (HARD)
P/N 08Z07-T6Z-100

Application

2020 RIDGELINE MODEL
SERIES

Publications No.

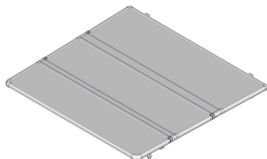
VERSION 1

Issue Date

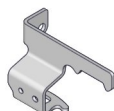
JUL 2022

PARTS LIST

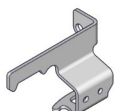
Tonneau cover



Left front bracket



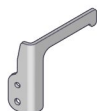
Right front bracket



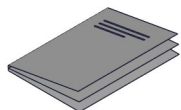
Left rear bracket



Right rear bracket



Accessory user's information manual



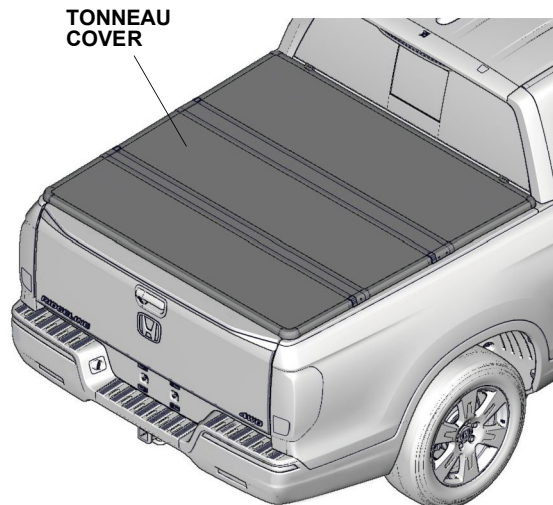
TOOLS AND SUPPLIES REQUIRED

Ratchet

T-50 TORX bit

Torque wrench

Illustration of the Tonneau Cover on the Vehicle



QF11901AA

INSTALLATION

Customer Information: The information in this installation instruction is intended for use only by skilled technicians who have the proper tools, equipment, and training to correctly and safely add equipment to your vehicle. These procedures should not be attempted by "do-it-yourselfers."

NOTE: Do not damage the body paint finish.

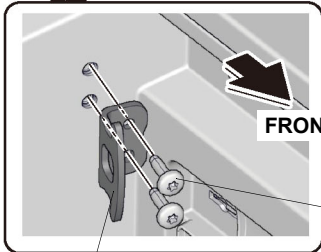
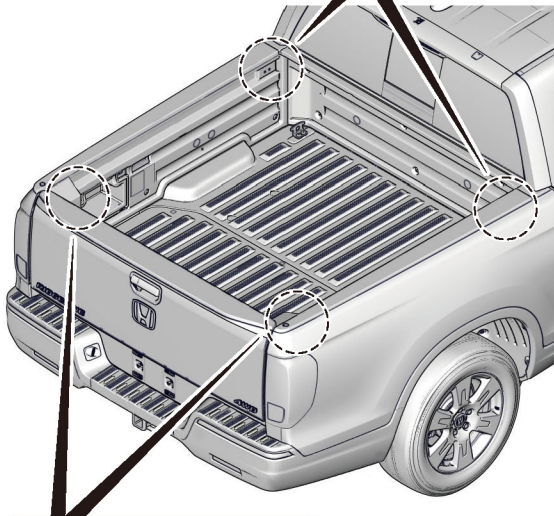
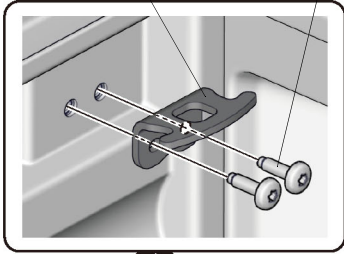
Germain Honda of College Hills

Installing the Tonneau Cover

1. Remove the left front upper tie-down hook and left rear upper tie-down hook. Repeat on the other side.

LEFT FRONT UPPER TIE-DOWN HOOK
(Do not reuse.)

2 TORX BOLTS



LEFT REAR UPPER TIE-DOWN HOOK
(Do not reuse.)

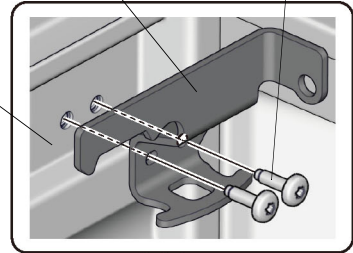
2 TORX BOLTS

QEN0204BA

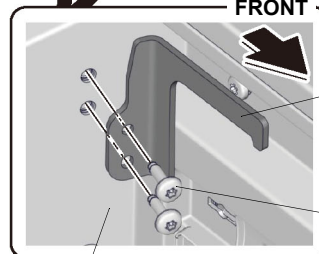
2. Install the left front bracket and left rear bracket to the left side bed lining with the four TORX bolts removed in step 1. Torque the TORX bolts to 20 N·m (15 lb·ft). Repeat on the other side.
NOTE: Make sure that the brackets are installed in the correct position and orientation.

LEFT FRONT BRACKET

2 TORX BOLTS
20 N·m (15 lb·ft)



LEFT SIDE BED LINING



LEFT REAR BRACKET

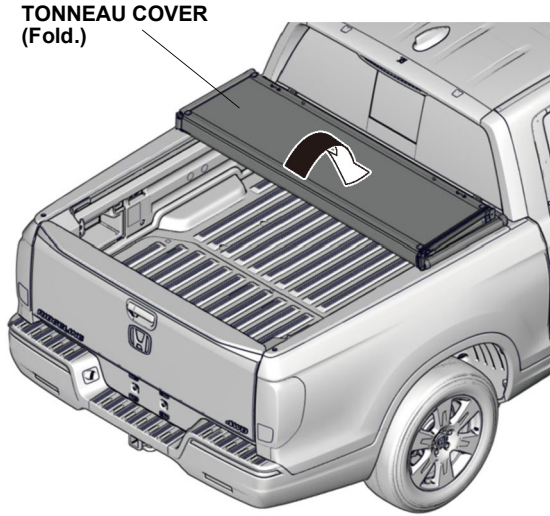
2 TORX BOLTS
20 N·m (15 lb·ft)

LEFT SIDE BED LINING

QEN0205BA

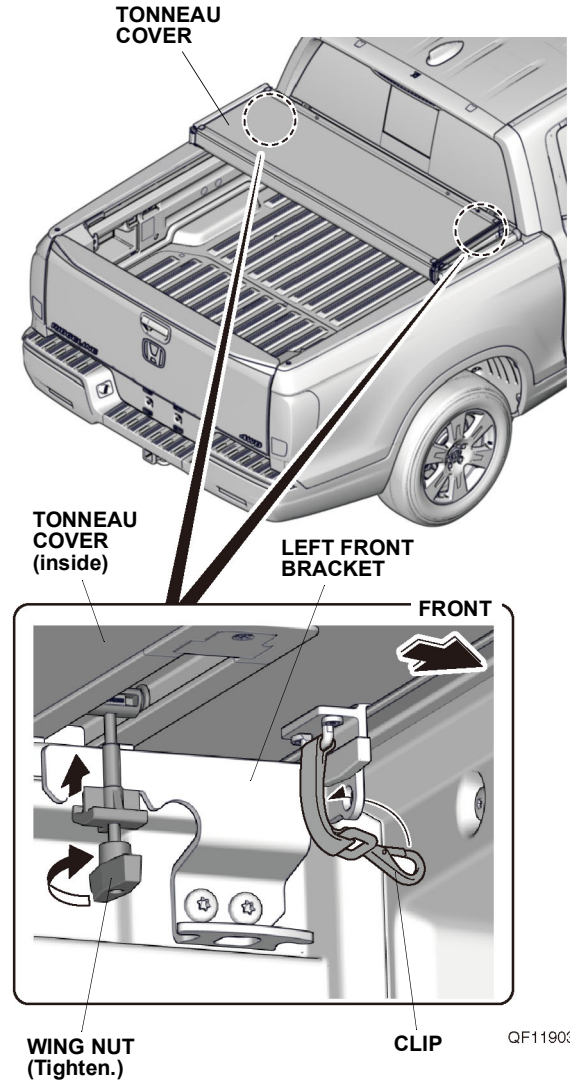
Germain Honda of College Hills

3. Fold the tonneau cover, then put it on the vehicle.



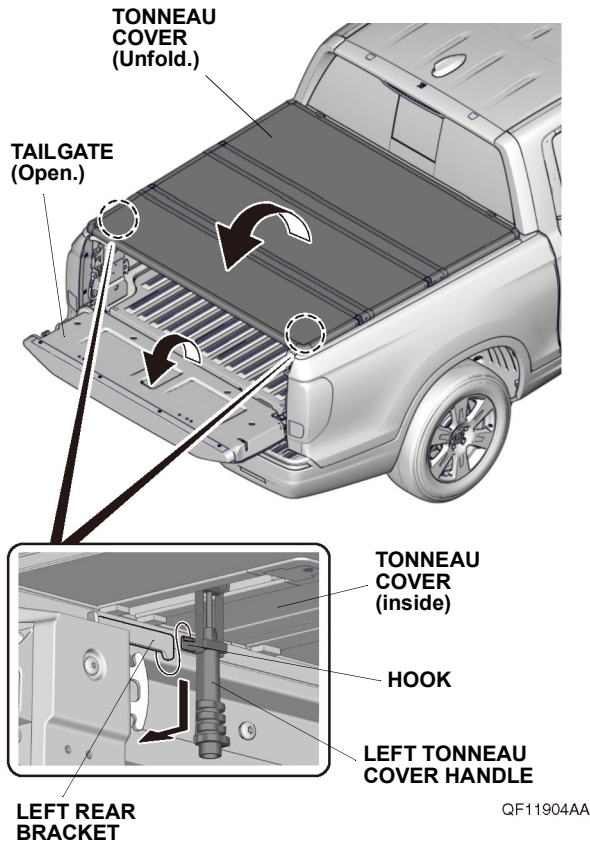
QF11902AA

4. Tighten the wing nut of the tonneau cover and attach the clip to the left front bracket. Repeat on the other side.



Germain Honda of College Hills

5. Open the tailgate, then unfold the tonneau cover.



6. Pull down the left tonneau cover handle and slide outward while pulling down. Attach the hook to the left rear bracket. Repeat on the other side.
7. Close the tailgate. Make sure the tailgate is properly closed.