

Germain Honda of College Hills



HONDA INSTALLATION INSTRUCTIONS

Accessory

CHROME DOOR TRIMS
P/N 08F57-T6Z-100

Application

2020 RIDGELINE
MODEL SERIES

Publications No.

VERSION 1

Issue Date

JUL 2022

PARTS LIST

Left front chrome door trim



Right front chrome door trim



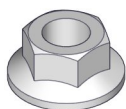
Left rear chrome door trim



Right rear chrome door trim



22 Flange nuts



TOOLS AND SUPPLIES REQUIRED

Phillips screwdriver

Drill

3 mm and 7 mm Drill bits

Blanket

Eye protection (safety goggles, face shield, etc.)

Pushpin

File

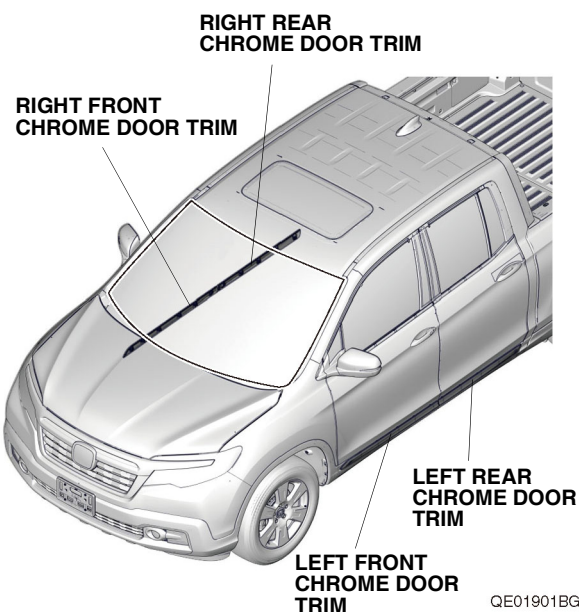
Masking tape

8 mm Socket

Ratchet

Torque wrench

Illustration of the Chrome Door Trims on the Vehicle



INSTALLATION

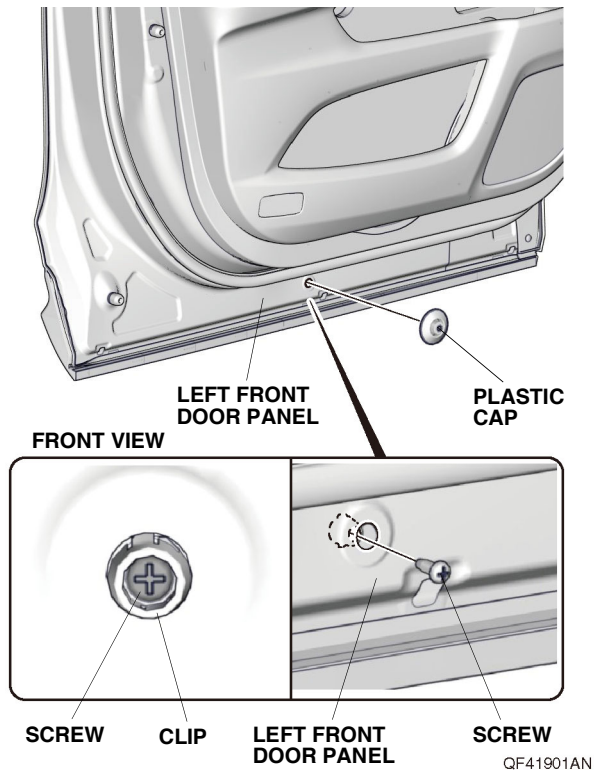
Customer Information: The information in this installation instruction is intended for use only by skilled technicians who have the proper tools, equipment, and training to correctly and safely add equipment to your vehicle. These procedures should not be attempted by "do-it-yourselfers."

NOTE: Do not damage the body paint finish.

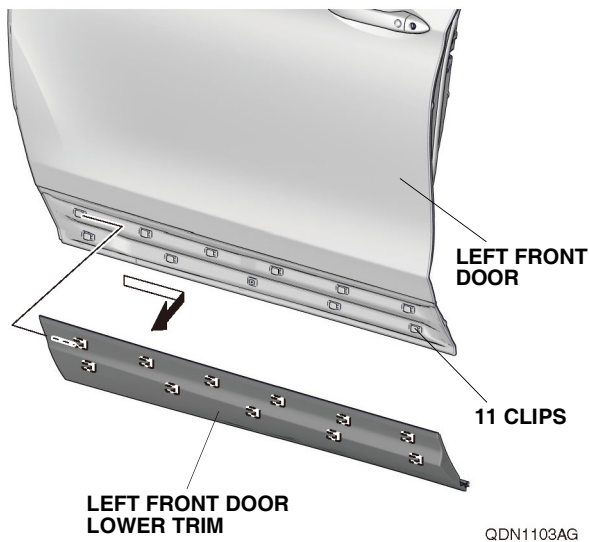
Germain Honda of College Hills

Installing the Front Chrome Door Trims

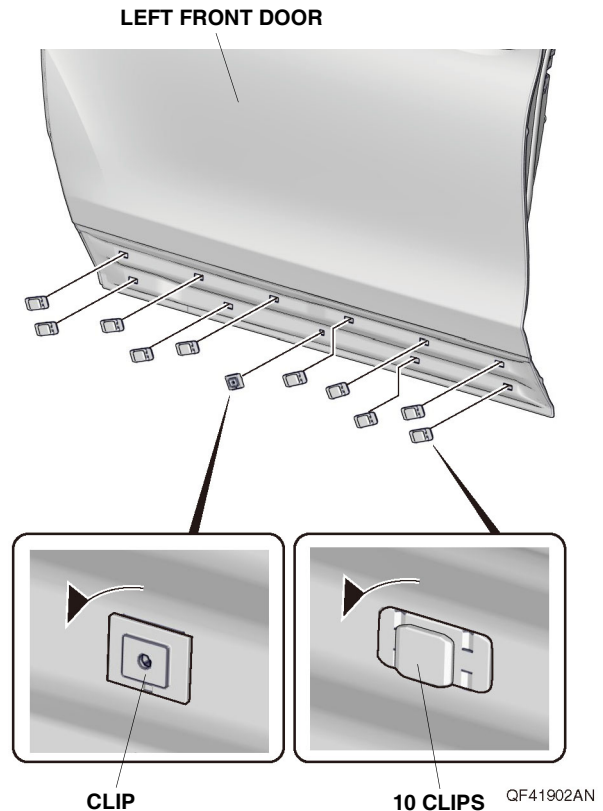
1. Open the left front door. Remove one plastic cap and one screw inside of the left front door panel.



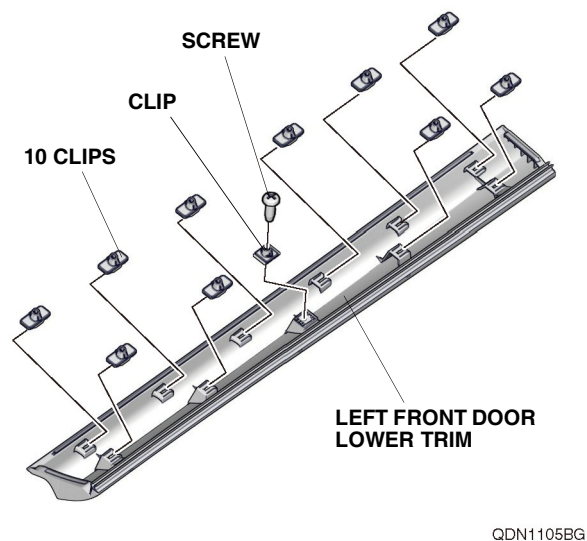
2. Slide and remove the left front door lower trim from the left front door.



3. Remove the 11 clips from the left front door.

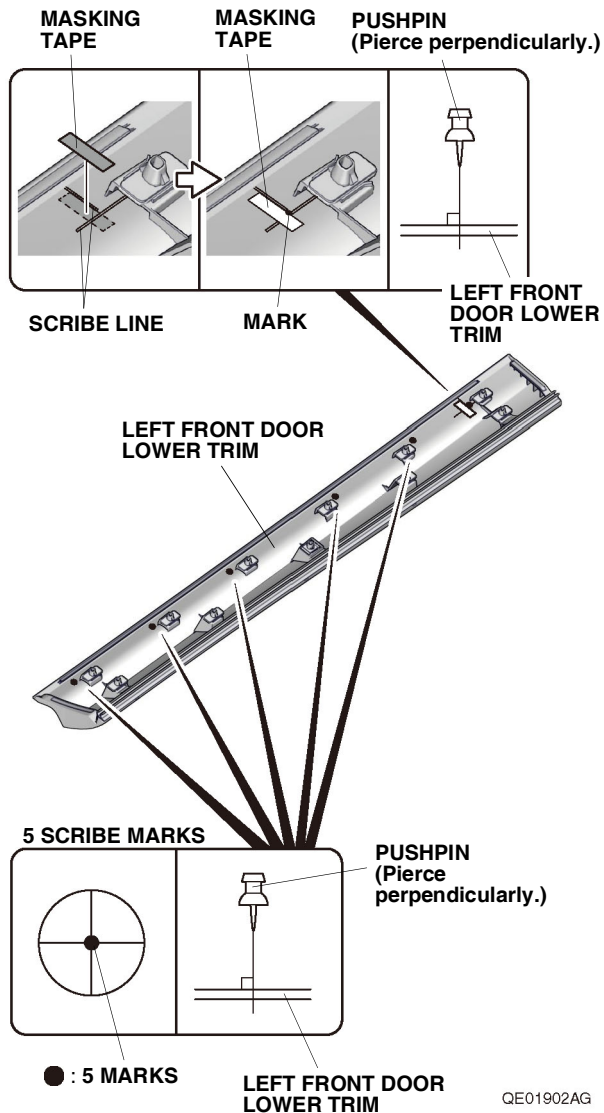


4. Reinstall the 11 clips removed in step 3 and one screw removed in step 1 to the left front door lower trim.



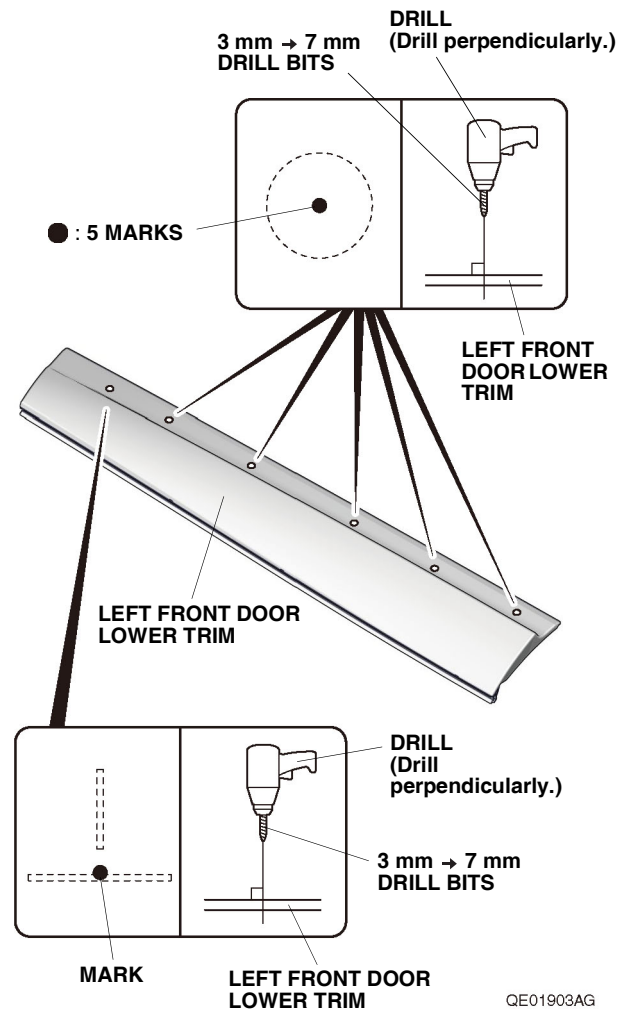
Germain Honda of College Hills

5. Attach masking tape to the left front door lower trim as shown.



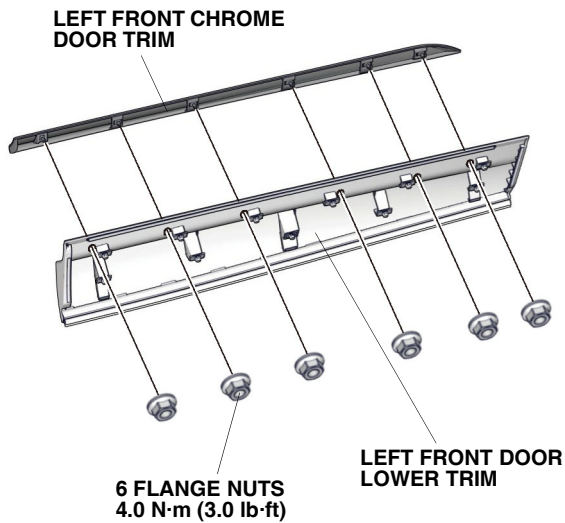
6. Using a pushpin, pierce the left front door lower trim as shown. Remove the masking tape.
NOTE: Make sure to pierce perpendicularly to the left front door lower trim.
7. Using a pushpin, pierce the left front door lower trim through the center of the five scribe marks.
NOTE: Make sure to pierce perpendicularly to the left front door lower trim.

8. While wearing eye protection, drill the six pierced marks to 7 mm. Drill first with a 3 mm drill bit, then finish with a 7 mm drill bit. Remove any burrs.
NOTE: Make sure to drill perpendicularly to the left front door lower trim.



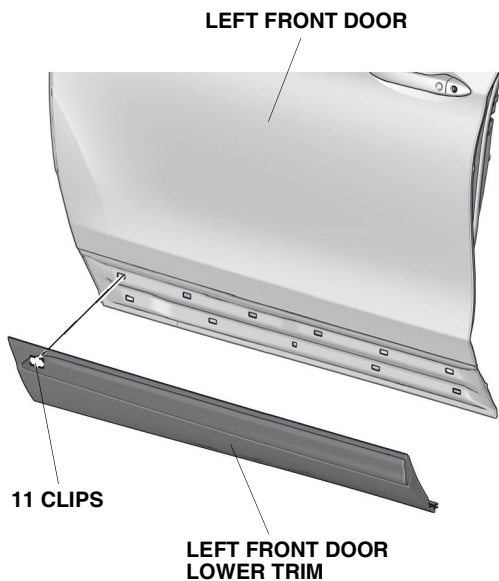
Germain Honda of College Hills

9. Install the left front chrome door trim to the left front door lower trim.



QF41903AN

10. Secure the left front chrome door trim to the left front door lower trim with six flange nuts. Torque the flange nuts to 4.0 N·m (3.0 lb-ft).
11. Install the left front door lower trim to the left front door.

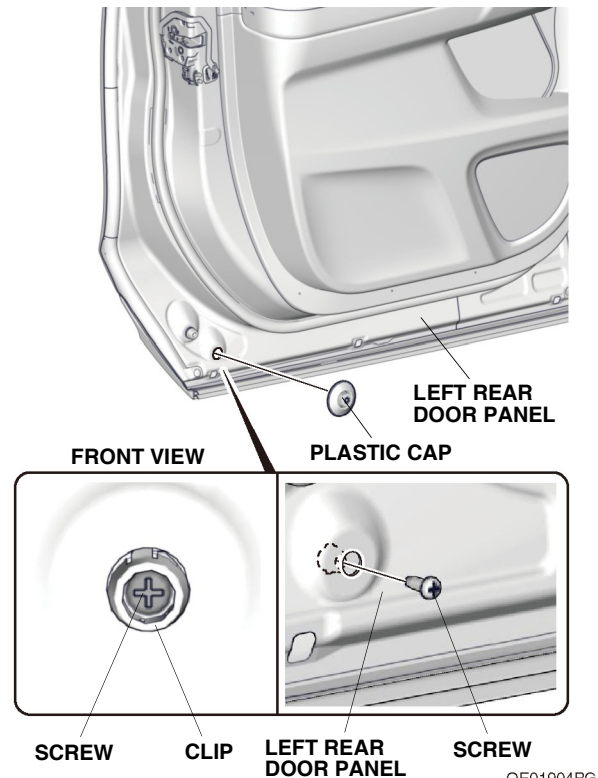


QDN1109AG

12. Reinstall the plastic cap removed in step 1 to the left front door.
13. Repeat steps 1 through 12 to install the right front chrome door trim to the right front door.

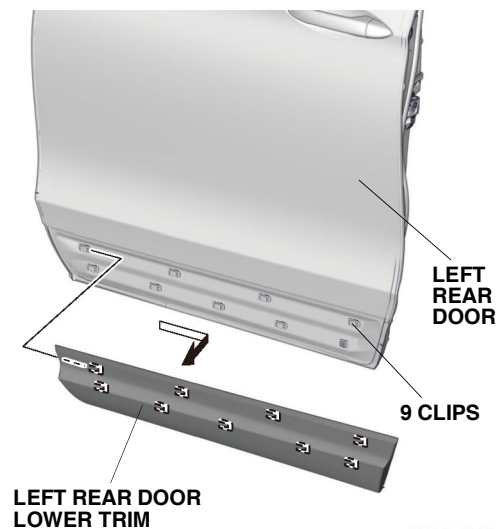
Installing the Rear Chrome Door Trims

14. Open the left rear door. Remove one plastic cap and one screw inside of the left rear door panel.



QE01904BG

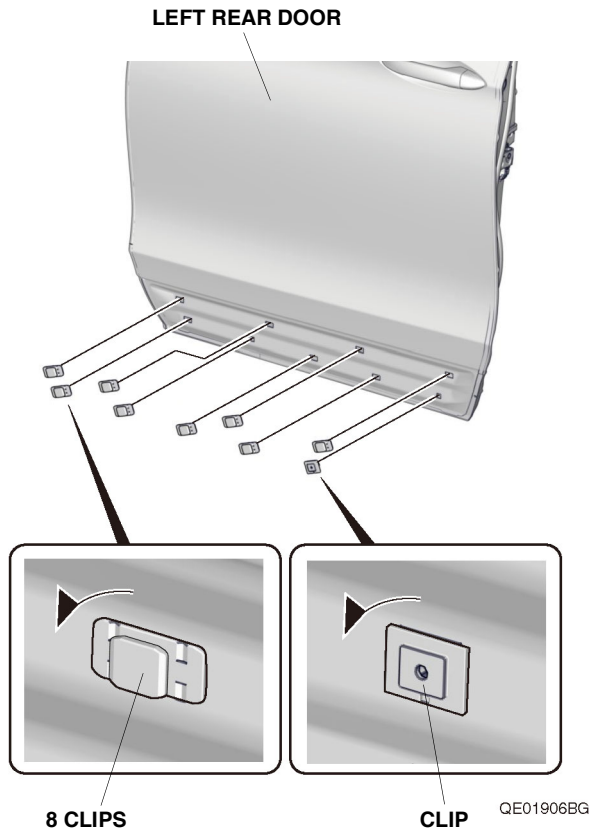
15. Slide and remove the left rear door lower trim from the left rear door.



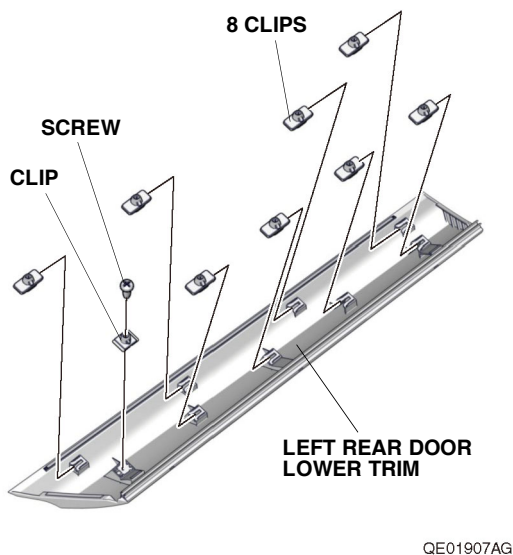
QE01905AG

Germain Honda of College Hills

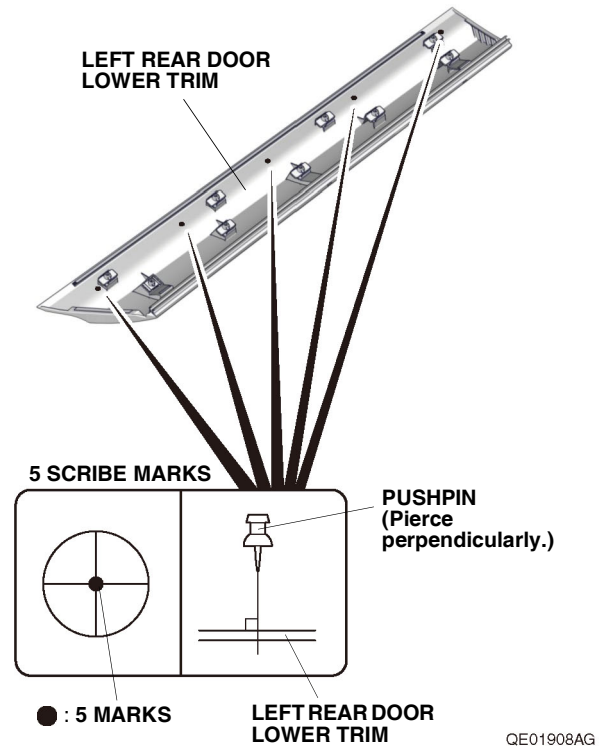
16. Remove the nine clips from the left rear door.



17. Reinstall the nine clips removed in step 16 and one screw removed in step 14 to the left rear door lower trim.

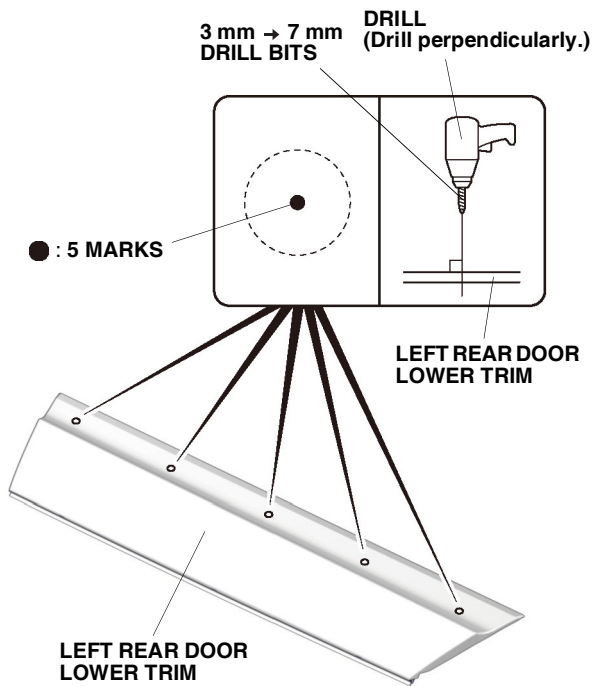


18. Using a pushpin, pierce the left rear door lower trim through the center of the five scribe marks.
NOTE: Make sure to pierce perpendicularly to the left rear door lower trim.



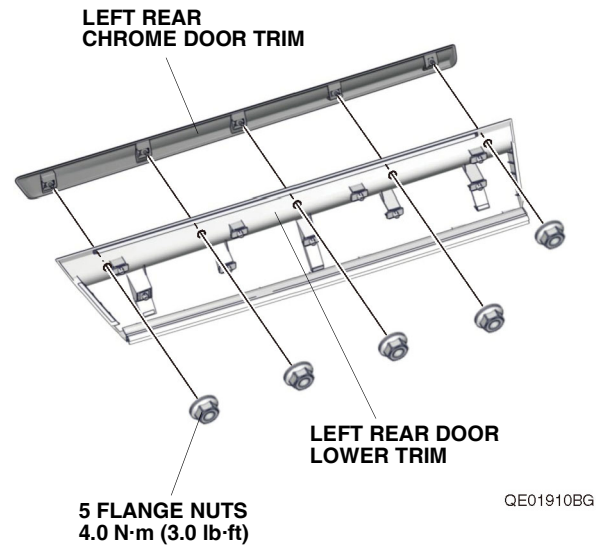
Germain Honda of College Hills

19. While wearing eye protection, drill the five pierced marks to 7 mm. Drill first with a 3 mm drill bit, then finish with a 7 mm drill bit. Remove any burrs.
NOTE: Make sure to drill perpendicularly to the left rear door lower trim.



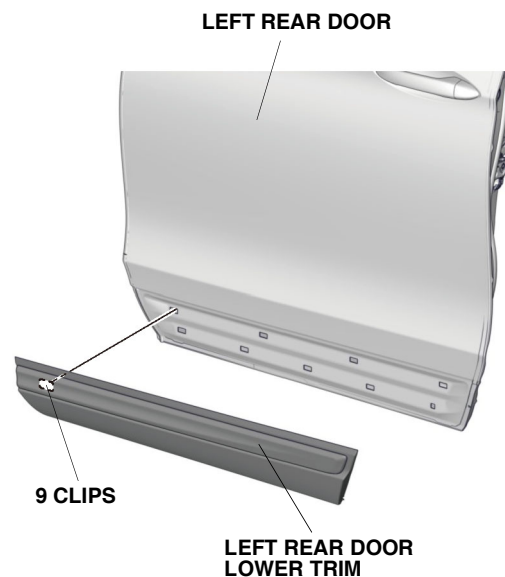
QE01909AG

20. Install the left rear chrome door trim to the left rear door lower trim.



QE01910BG

21. Secure the left rear chrome door trim to the left rear door lower trim with five flange nuts. Torque the flange nuts to 4.0 N·m (3.0 lb·ft).
22. Install the left rear door lower trim to the left rear door.



QE01911AG

23. Install the plastic cap removed in step 14 to the left rear door.
24. Repeat steps 14 through 23 to install the right rear chrome door trim to the right rear door.