



INSTALLATION INSTRUCTIONS

Accessory
**EXTENDED VIEW MIRROR
- HEATED**
P/N 76254-TG7-A11

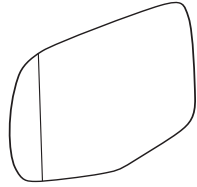
Application
**2017 RIDGELINE
(HEATED)**

Publications No.
VERSION 1

Issue Date
JUN 2016

PARTS LIST

Heated extended view mirror



TOOLS AND SUPPLIES REQUIRED

10 mm Open end wrench

Ratchet

Shop towel

The following tool is available through the Honda Tool and Equipment Program. On the iN, click on: Service > Service Bay > Tool and Equipment Program, then enter the number under "Search." Or, call 888-424-6857.

- Trim Tool Set (T/N SOJATP2014)
- Plastic Trim Tool (T/N SILTRIMTL10)

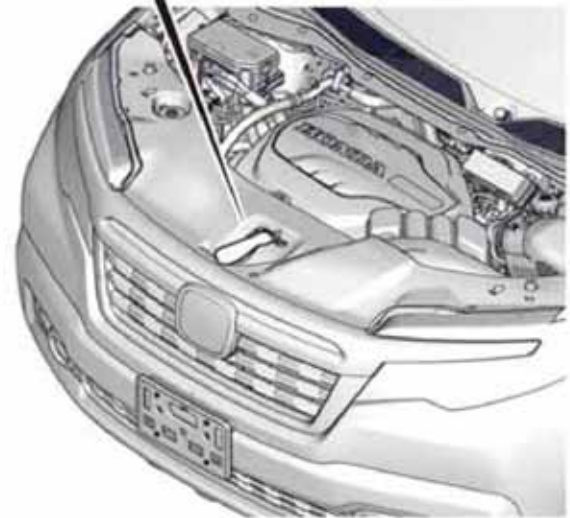
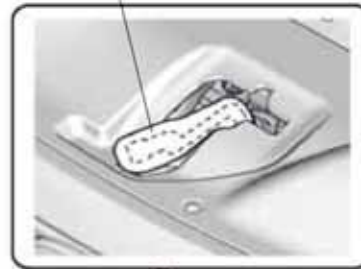
INSTALLATION

Customer Information: The information in this installation instruction is intended for use only by skilled technicians who have the proper tools, equipment, and training to correctly and safely add equipment to your vehicle. These procedures should not be attempted by "do-it-yourselfers."

NOTE:

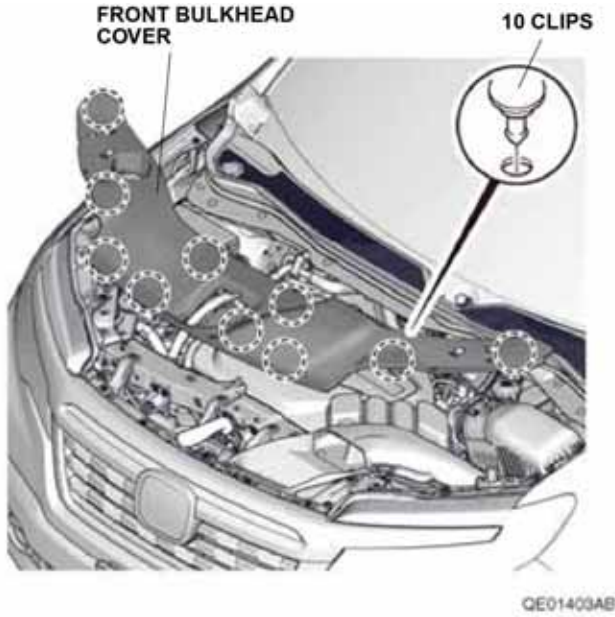
- Be careful not to damage the vehicle.
1. Wrap a shop towel around the hood latch.

HOOD LATCH
(Wrap with a shop towel.)

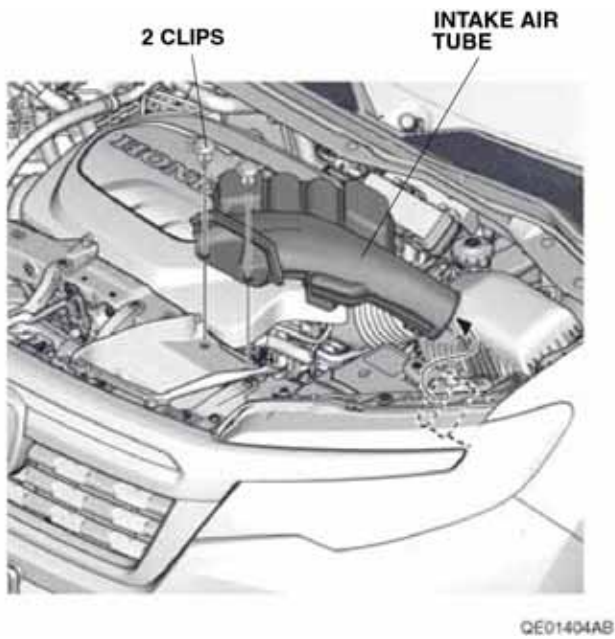


QE01402BB

- Remove the front bulkhead cover.

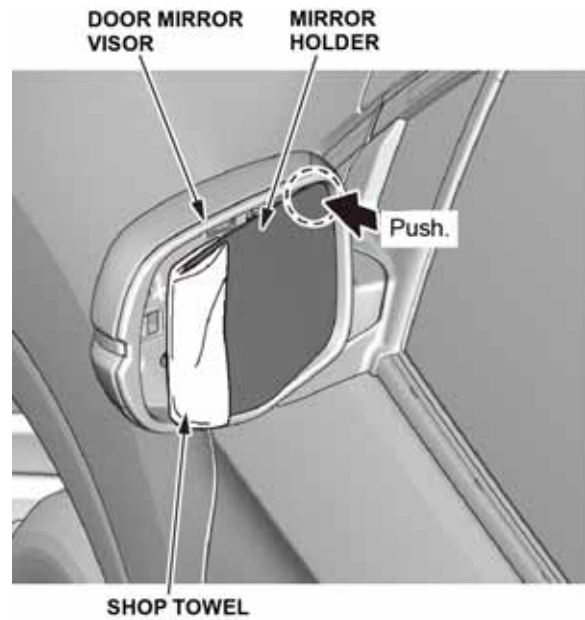


- Remove the intake air tube.

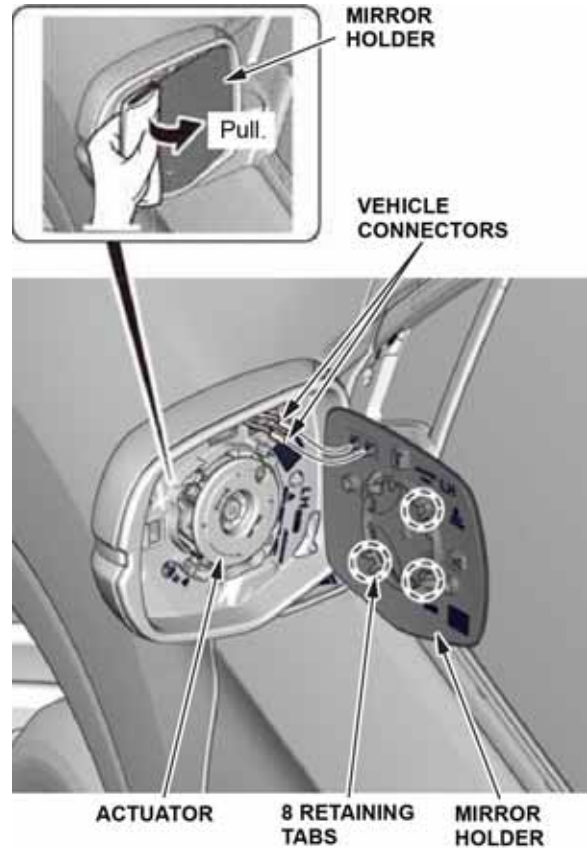


- Disconnect the negative cable from the battery.

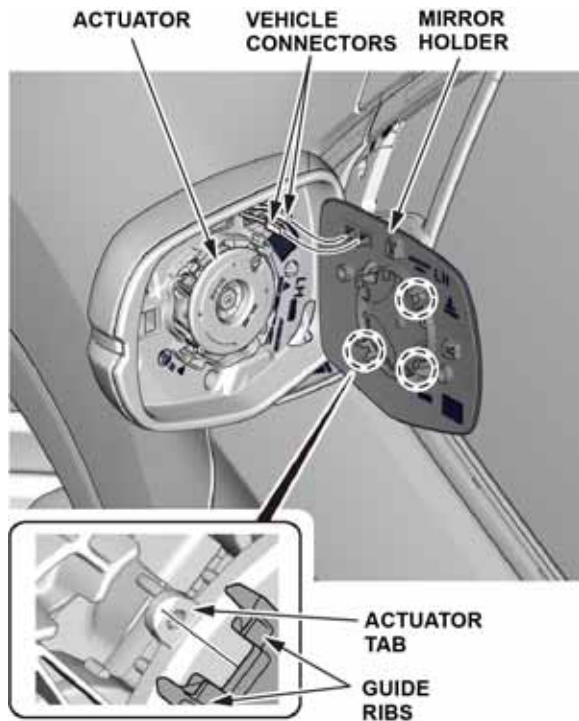
- Insert the shop towel between the mirror holder and the door mirror visor to protect the vehicle as shown.



- Remove the mirror holder, and unplug the vehicle connectors.

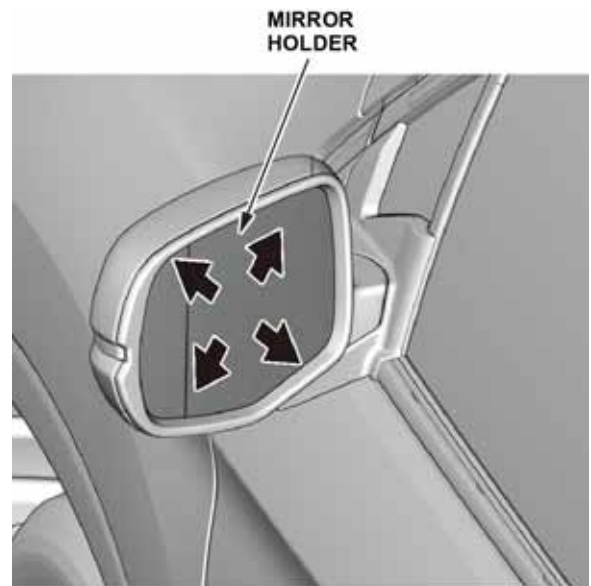


4. Plug the vehicle connectors into the new mirror holder.



5. Align the guide ribs on the new mirror holder so they line up on each side with the actuator tabs. Install the new mirror holder on the actuator.

6. Move the mirror holder in all directions to confirm it is installed securely.



7. Connect the negative cable to the battery.
8. Install the front bulkhead cover and the intake air tube.
9. Press and hold the audio unit power button for 2 seconds to restore the audio and navigation (if equipped) system functions.
10. Set the clock on vehicles without navigation.
11. If necessary, restore the systems back to normal operation as described in the Electronic Service Manual.