

Germain Honda of College Hills



INSTALLATION INSTRUCTIONS

Accessory

**SIDE PANEL
OUTER DECALS**

Application

**2023 PILOT
MODEL SERIES**

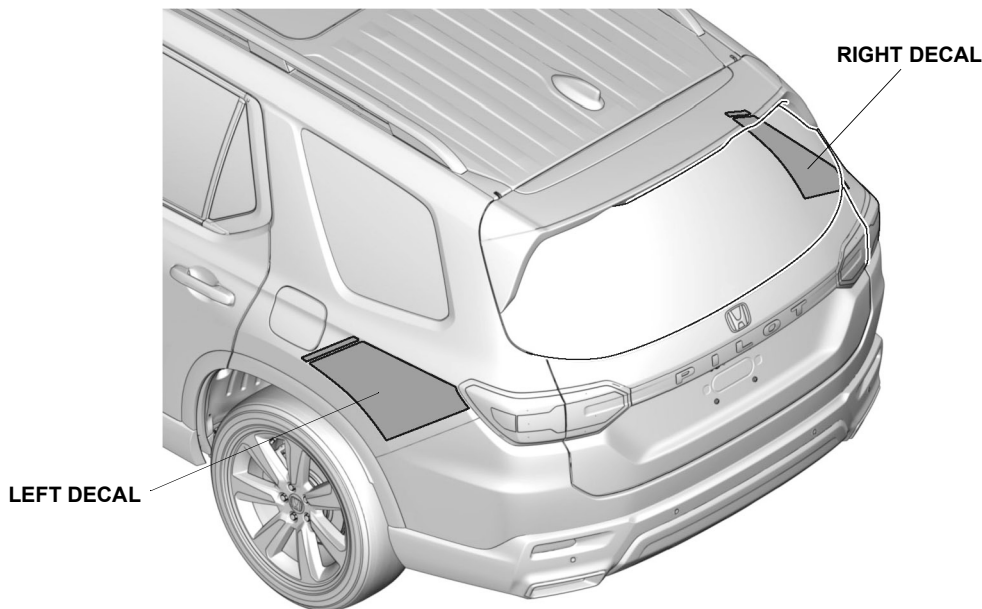
Publications No.

VERSION 1

Issue Date

NOV 2022

GENERAL VIEW



QM53119AA

FOR YOUR SAFETY (Read carefully.)

Warning Symbols

Safety: Your safety, and the safety of others, is important. To help you make informed decisions about service procedures, we have provided safety messages where appropriate. Of course, it is not practical or possible to warn you about all the hazards associated with servicing a vehicle - you must use your own good judgment.

You will find important safety messages preceded by one of the following symbols:

*All symbols are not used in all installation instructions.

⚠ DANGER

You will be killed or seriously hurt if you do not follow the instructions.

⚠ WARNING

You can be killed or seriously hurt if you do not follow the instructions.

⚠ CAUTION

You can be hurt if you do not follow the instructions.

NOTICE

Gives advice to prevent damage to the product, vehicle, the environment or other property.

NOTE

Gives helpful information or instructions to be followed when installing this product.

Germain Honda of College Hills

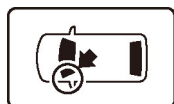


Indicates a prohibited action.

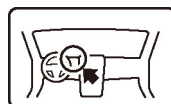
Procedure and Location Icons

These icons indicate the work location and the worker's point of view.

*All icons are not used in all installation instructions.



The location on the vehicle.



The location in the vehicle.
(Instrument panel.)



Wear eye protection.



Wear heavy gloves.



Use an assistant.



Place the part on a blanket.



Work perpendicular.



Remove any burrs.



Use touch-up paint and allow to dry.



Tighten to the specified torque.



Apply firm pressure while rolling, especially at the ends, to set the adhesive.



Press firmly.



Clean with isopropyl alcohol.



Return the original part to the customer.
(Do not reuse.)

Safety: General

- Be careful not to damage the vehicle or the parts.
- The illustrations may differ slightly from the actual accessory.

Safety: Accessory

- Do not install the accessory on a dirty surface or in direct sunlight.
- Make sure the ambient air temperature is 60°F (15°C) or above when installing accessories that use adhesive material.
- When applying adhesive material, make sure it is lined up properly before attaching. Once the adhesive material touches the surface, do not try to remove it. If you do, you could damage the part.

Germain Honda of College Hills

- Cover nearby parts with a shop towel to prevent getting them wet.
- Always wear gloves when working with 3M protective tape application solution.
- Use 3M protective tape application solution with a spray bottle.
- Do not wash the vehicle for 24 hours to allow the adhesive to cure.

PARTS LIST

Side Panel Outer Decals Kit

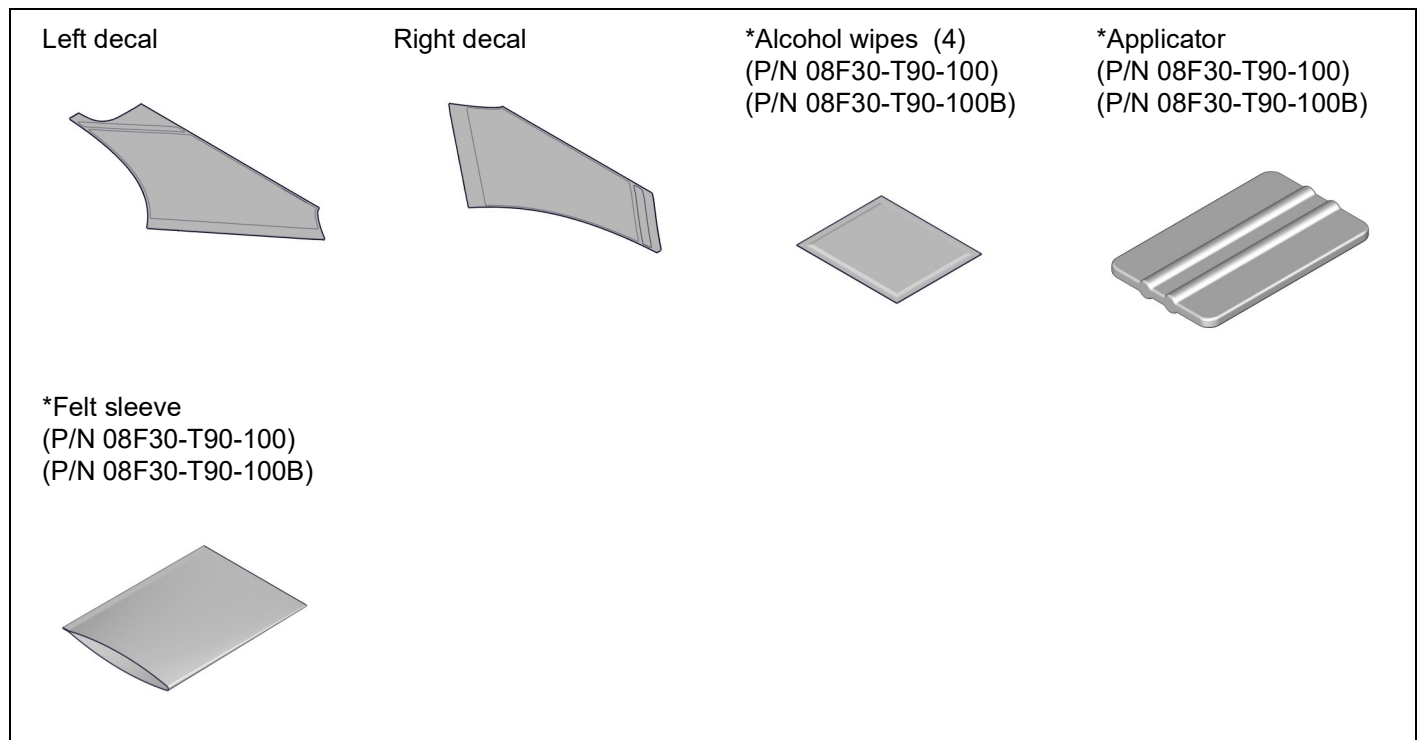
(P/N 08F30-T90-100)

(P/N 08F30-T90-100B)

(P/N 08F30-T90-P00)

(P/N 08F30-T90-P00B)

(*: The part differs depending on the kit.)



Germain Honda of College Hills

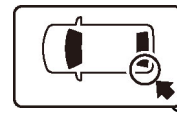
REQUIRED TOOLS AND SUPPLIES

- Shop towel
- Masking tape
- 3M Protective tape application solution

INSTALLATION

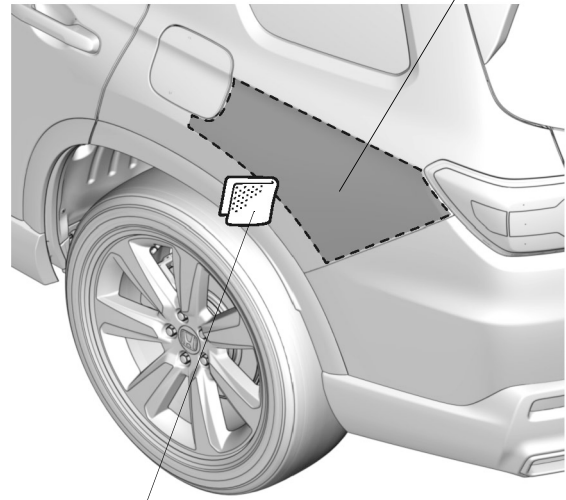
1. Clean the attaching area.

NOTE
Allow to dry thoroughly.



Gloves

LEFT REAR FENDER

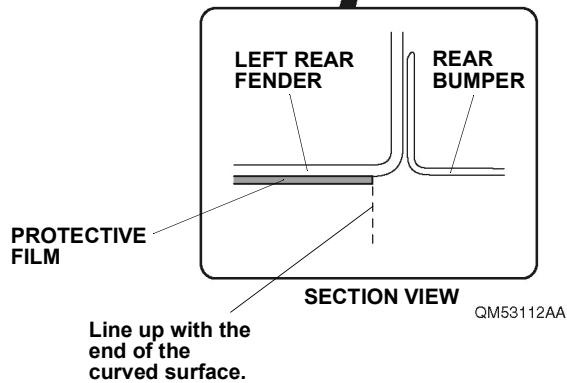
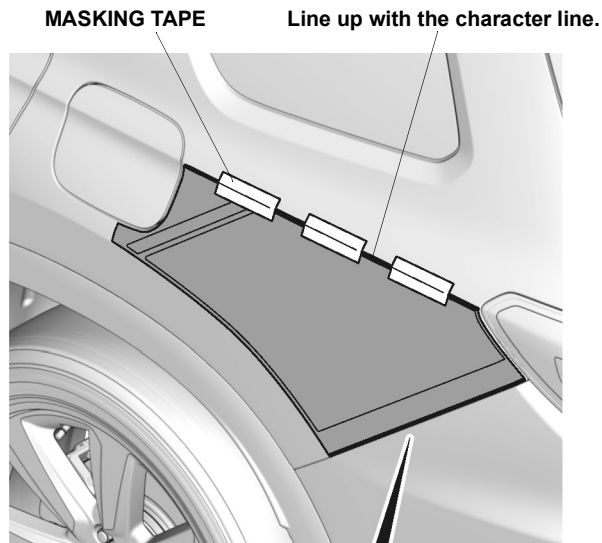


2 ALCOHOL WIPES

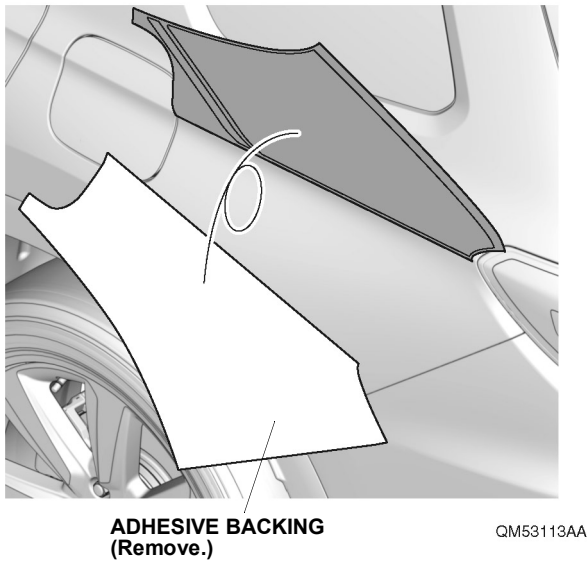
QM53111AA

2. Line up the left decal.

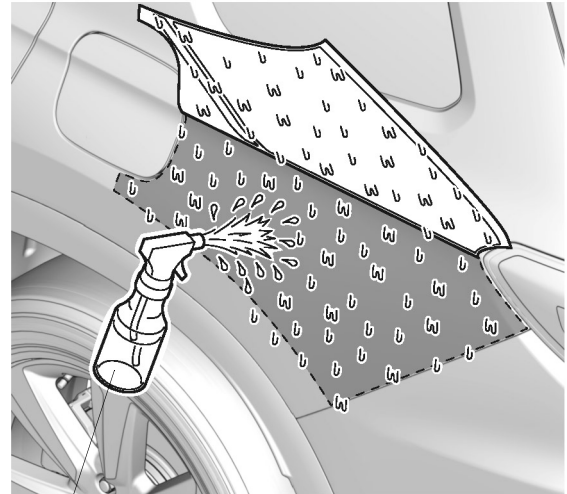
Germain Honda of College Hills



3. Remove the adhesive backing.



4. Spray the left decal and left rear fender.

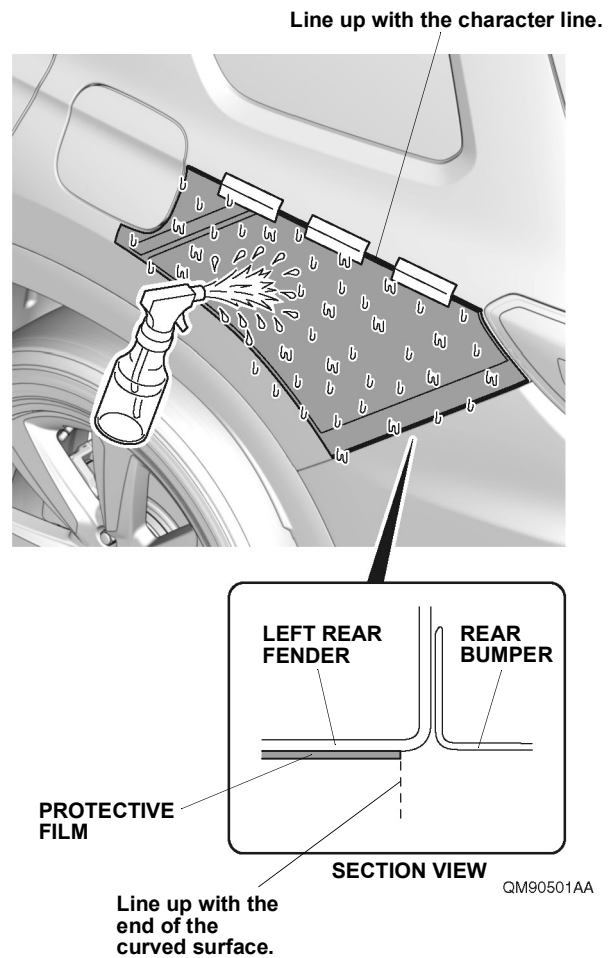


3M PROTECTIVE TAPE APPLICATION SOLUTION

QM53114AA

5. Line up the left decal.

Germain Honda of College Hills



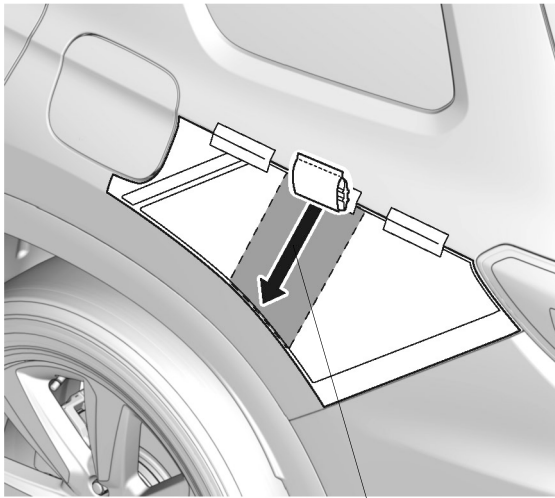
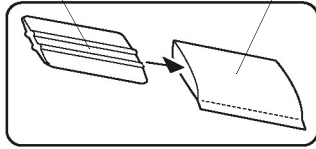
6. Spray the left decal.
7. Secure the left decal.

Germain Honda of College Hills

NOTE

- Move the felt sleeve in one direction only.
- Inspect the left decal for bubbles and rework if needed.

APPLICATOR FELT SLEEVE



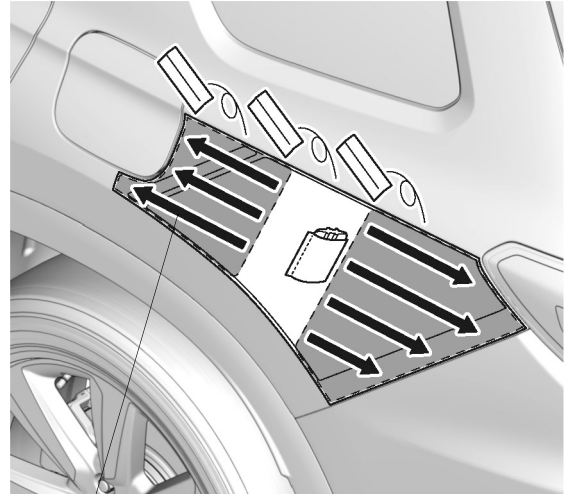
QM53115AA

Work from the top
to the bottom.

8. Secure the left decal.

NOTE

- Move the felt sleeve in one direction only.
- Inspect the left decal for bubbles and rework if needed.



Work from the center
to the outside.

QM53116AA

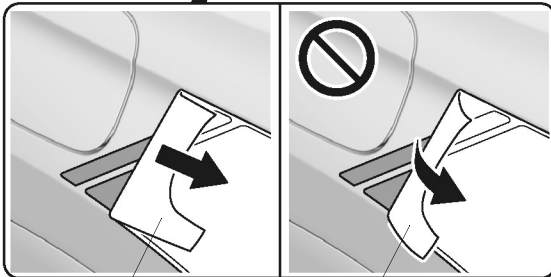
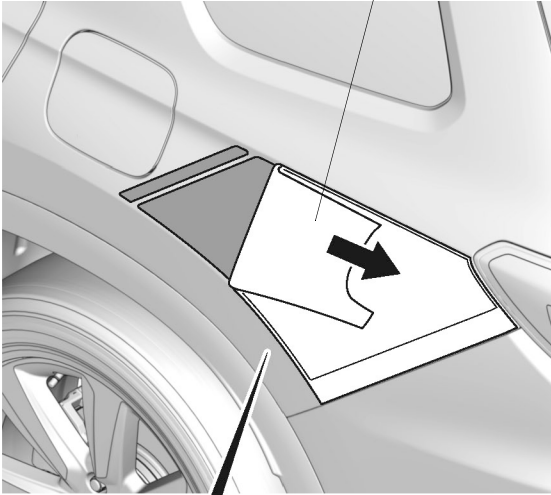
9. Remove the masking tape.
10. Remove the protective film.

NOTE

Do not pull up on the protective film.

Germain Honda of College Hills

PROTECTIVE FILM
(Remove.)



Peel along the
left decal.

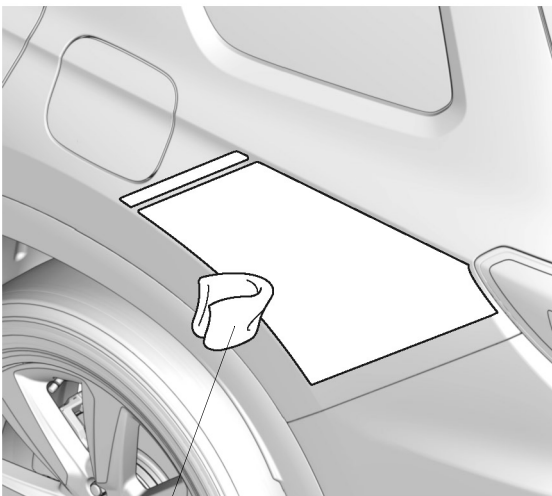
Do not pull up.

QM53117AA

11. Wipe off the 3M protective tape application solution.

NOTE

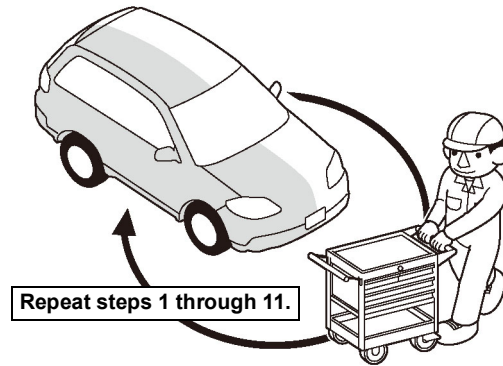
Allow to dry thoroughly.



SHOP TOWEL

QM53118AA

12. Repeat the same procedures on the other side.



Q9D1014AM

13. Check that all parts are installed properly.