

Germain Honda of College Hills



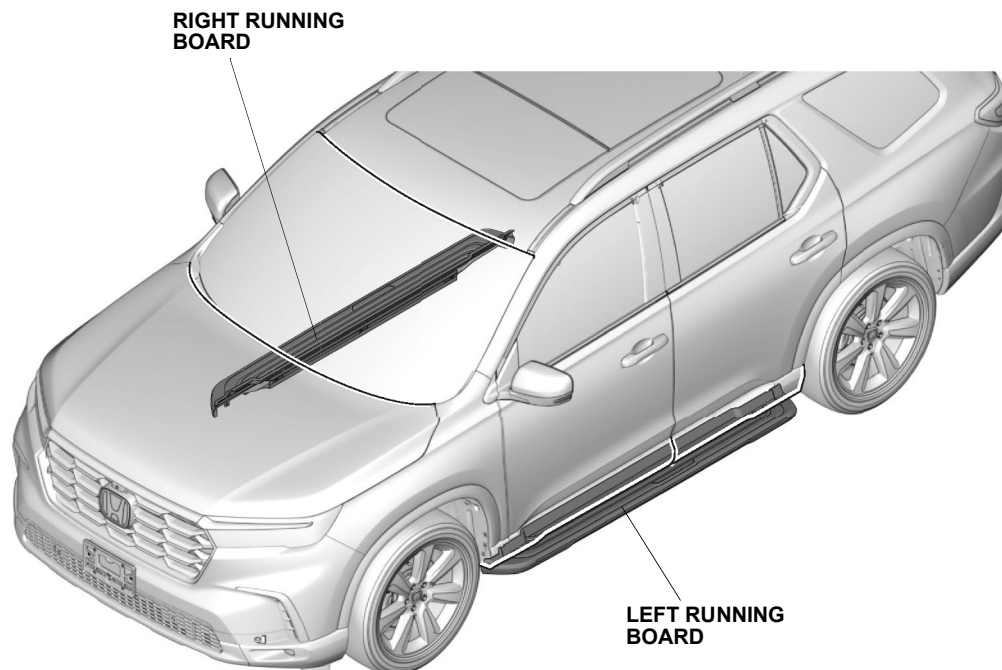
INSTALLATION INSTRUCTIONS

Accessory
RUNNING BOARDS

Application
**2023 PILOT
MODEL SERIES**

Publications No.
VERSION 1
Issue Date
NOV 2022

GENERAL VIEW



QM42001AA

FOR YOUR SAFETY (Read carefully.)

Warning Symbols

Safety: Your safety, and the safety of others, is important. To help you make informed decisions about service procedures, we have provided safety messages where appropriate. Of course, it is not practical or possible to warn you about all the hazards associated with servicing a vehicle - you must use your own good judgment.

You will find important safety messages preceded by one of the following symbols:

*All symbols are not used in all installation instructions.

⚠ DANGER

You will be killed or seriously hurt if you do not follow the instructions.

⚠ WARNING

You can be killed or seriously hurt if you do not follow the instructions.

⚠ CAUTION

You can be hurt if you do not follow the instructions.

NOTICE

Gives advice to prevent damage to the product, vehicle, the environment or other property.

NOTE

Gives helpful information or instructions to be followed when installing this product.



Indicates a prohibited action.

Germain Honda of College Hills

Procedure and Location Icons

These icons indicate the work location and the worker's point of view.

*All icons are not used in all installation instructions.



The location on the vehicle.



The location in the vehicle.
(Instrument panel.)



Wear eye protection.



Wear heavy gloves.



Use an assistant.



Place the part on a blanket.



Work perpendicular.



Remove any burrs.



Use touch-up paint and allow to dry.



Tighten to the specified torque.



Apply firm pressure while rolling, especially at the ends, to set the adhesive.



Press firmly.



Clean with isopropyl alcohol.



Return the original part to the customer.
(Do not reuse.)

Safety: General

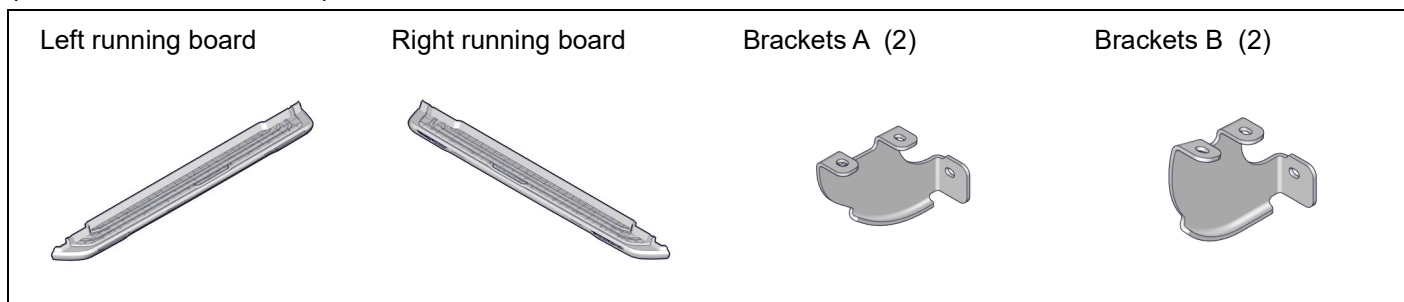
- Observe all safety notes and precautions described in the service information, in addition to those described in this Installation Instruction. Be extremely careful for your safety and the safety of others.
- Be careful not to damage the vehicle or the parts.
- Be extremely careful when handling retaining tabs and clips.
- Note the locations of the parts before removing them so they can be properly installed in their original positions.
- The illustrations may differ slightly from the actual accessory.

Safety: Accessory

Always use the parts and tools specified in the installation instructions.

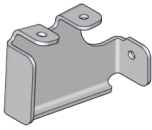
PARTS LIST

Running Boards Kit
(P/N 08L33-T90-100)
(P/N 08L33-T90-100A)

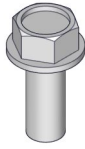


Germain Honda of College Hills

Brackets C (2)

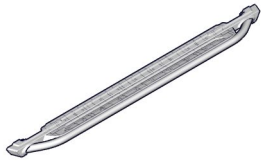


Flange bolts (18)

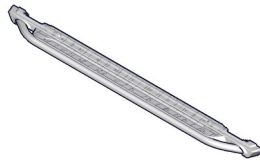


Running Boards Kit (P/N 08L33-T90-100B)

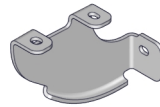
Left running board



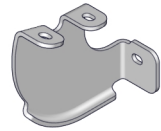
Right running board



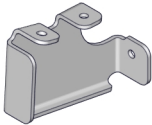
Brackets A (2)



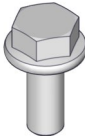
Brackets B (2)



Brackets C (2)



Flange bolts (18)



REQUIRED TOOLS AND SUPPLIES

- Ratchet
- 10 mm and 13 mm Open end wrenches
- 10 mm and 13 mm Sockets
- Tin snips
- Torque wrench
- File

The following tools are available through the HondaTool and Equipment Program:

- Trim Tool Set (T/N SOJATP2014)
- Plastic Trim Tool (T/N SILTRIMTL10)

Germain Honda of College Hills

INSTALLATION

1. Lift up the vehicle.
2. Choose one of these options.

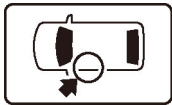
• With plastic left front floor under cover and plastic left rear floor under cover

Go to step 3

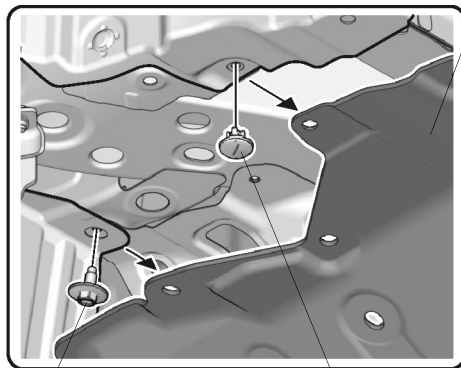
• Without plastic left front floor under cover and with metal left rear floor under cover

Go to step 6

3. Remove the plastic left front floor under cover and plastic left rear floor under cover.

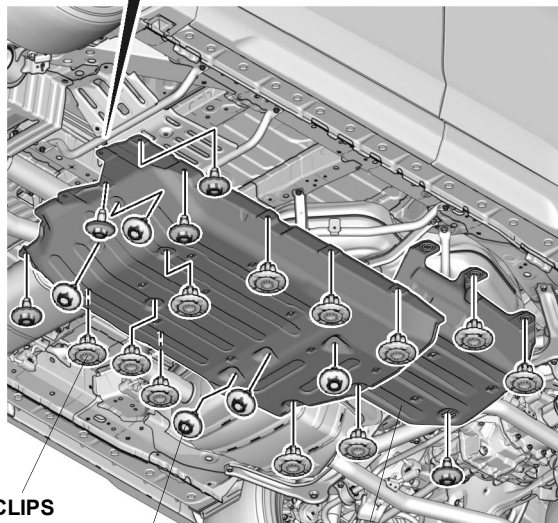


PLASTIC LEFT FRONT FLOOR UNDER COVER



BOLT

CLIP (short)



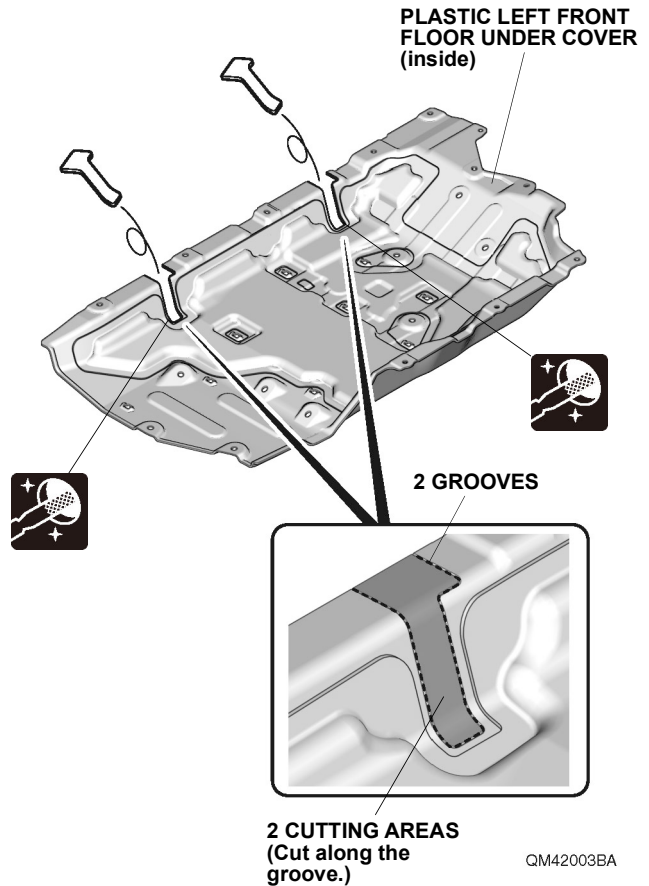
11 CLIPS

10 BOLTS

PLASTIC LEFT REAR FLOOR UNDER COVER

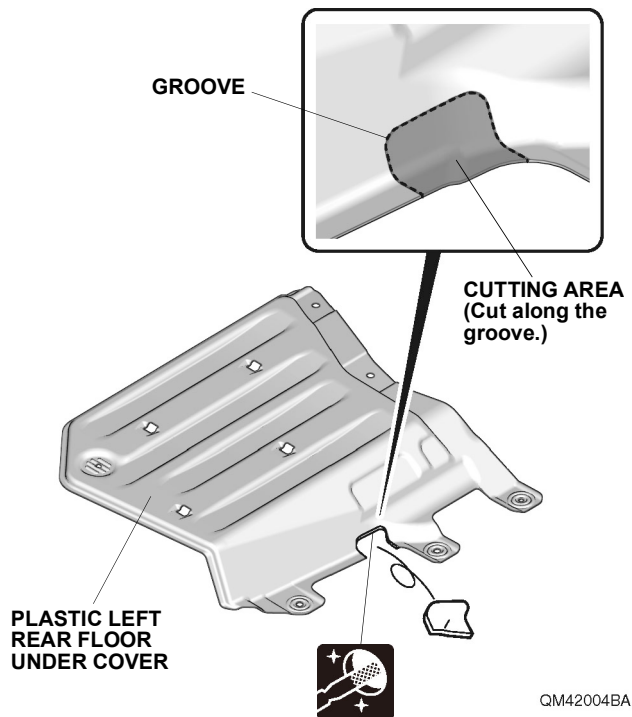
QM42002BA

4. Cut the plastic left front floor under cover.



QM42003BA

5. Cut the plastic left rear floor under cover.



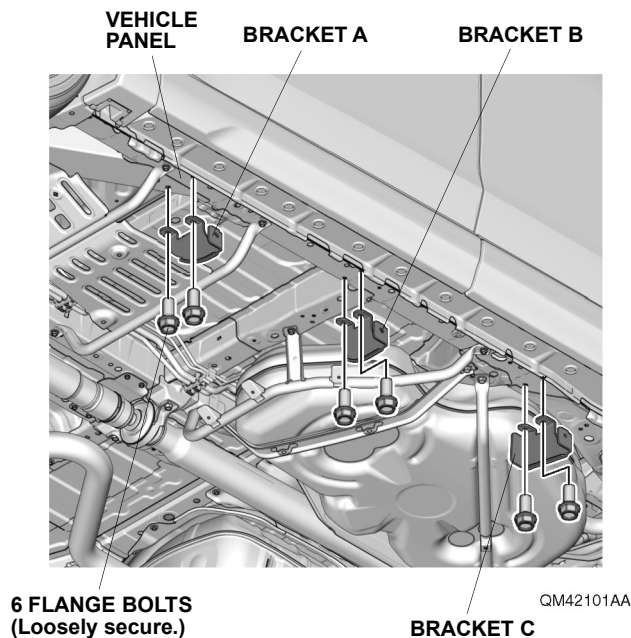
QM42004BA

Germain Honda of College Hills

6. Loosely install the bracket A, bracket B, and bracket C.

NOTE

Check the installation position of the brackets.

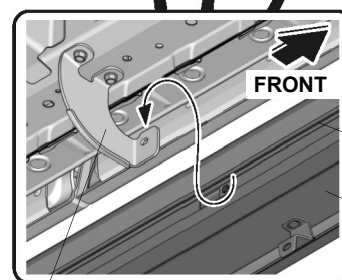
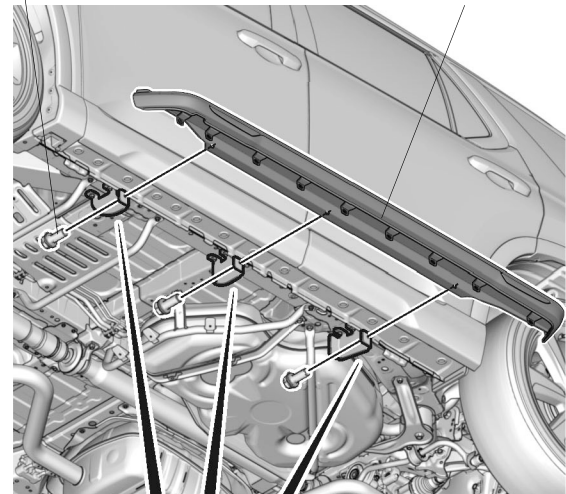


7. Loosely install the left running board.



3 FLANGE BOLTS
(Loosely secure.)

LEFT RUNNING
BOARD



OPPOSITE SIDE VIEW

GROOVE

LEFT
RUNNING
BOARD

BRACKET A,
BRACKET B,
AND BRACKET C

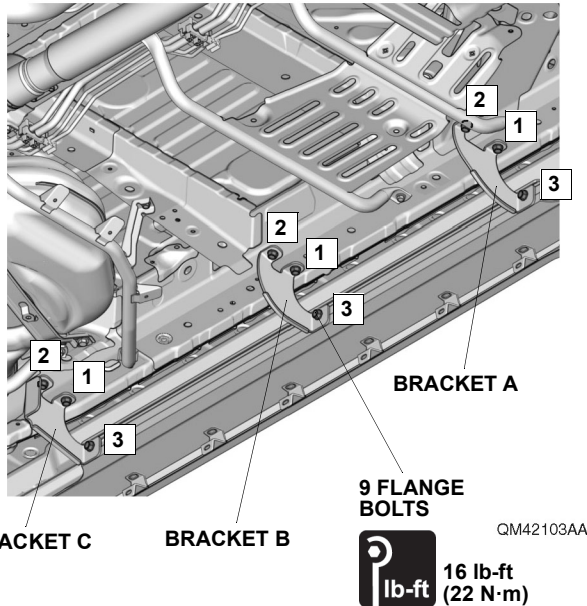
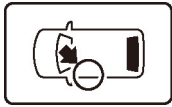
QM42102AA

Germain Honda of College Hills

8. Tighten the flange bolts.

NOTE

Tighten in the order shown.



9. Choose one of these options.

- With plastic left front floor under cover and plastic left rear floor under cover

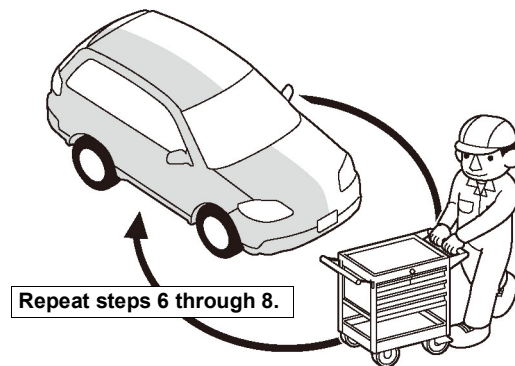
Go to step 10

- Without plastic left front floor under cover and with metal left rear floor under cover

Go to step 11

10. Install the plastic left front floor under cover and plastic left rear floor under cover.

11. Repeat the same procedures on the other side.



Q9D1014AM

12. Check that all parts are installed properly.