



HONDA

INSTALLATION INSTRUCTIONS

Accessory

BACKUP SENSORS

Application

2022 PILOT

Publications No.

VERSION 1

Issue Date

JUL 2021

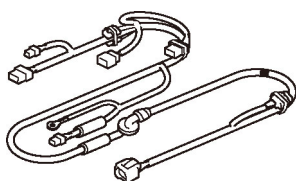
PARTS LIST

Backup Sensors Attachment Kit
P/N 08V67-TG7-100B

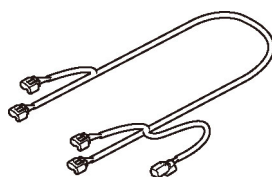
Control unit bracket



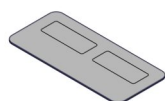
Backup sensor harness



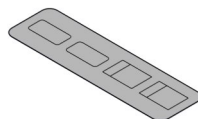
Subharness



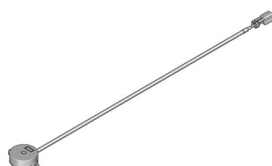
Fuse label A



Fuse label B



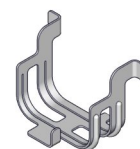
Buzzer



Switch



Switch bracket



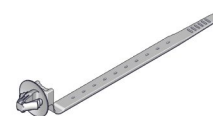
3 Narrow wire ties



13 Wire ties



4 Wire ties with clip A



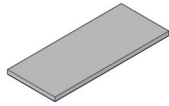
Wire tie with clip B



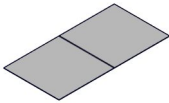
Connector clip
(May not be used)



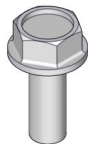
2 Urethane tapes
(1 Not used)



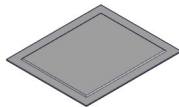
2 Aluminum tapes
(1 Not used)



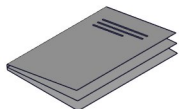
Flange bolt



2 Alcohol wipes

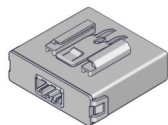


Accessory user's information manual

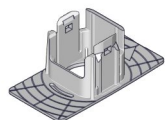


Backup Sensors Kit
P/N 08V67-TG7-100J

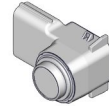
Control unit



4 Retainers



4 Sensors



TOOLS AND SUPPLIES REQUIRED

Phillips screwdriver

Impact screwdriver

Scissors

10 mm and 13 mm Open end wrenches

10 mm Socket

Pushpin

Ratchet

3 mm, 6 mm, and 8.5 mm Drill bits

Eye protection (face shield, safety goggles, etc.)

File

5 mm Hex wrench

Blanket

Isopropyl alcohol

Shop towel

26 mm Hole saw

Drill

Masking tape

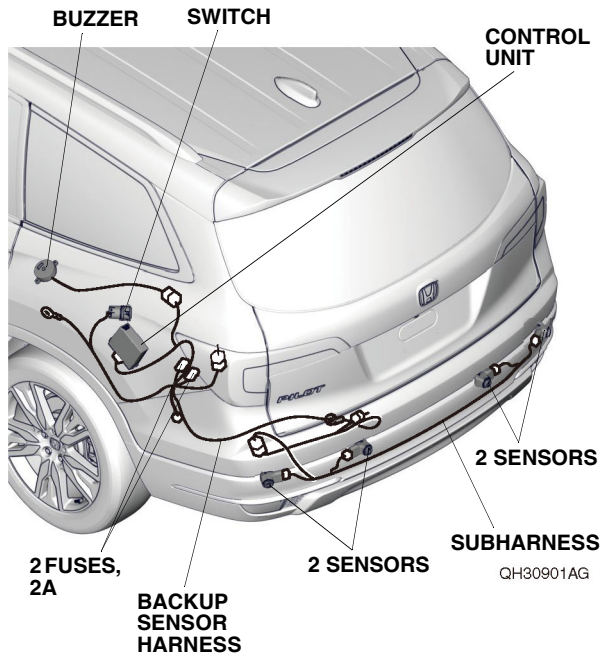
Diagonal cutters

Felt-tip pen

The following tools are available through the Honda Tool and Equipment Program. On the iN, click on Service > Service Bay > Tool and Equipment Program, then enter the number under "Search." Or, call 888-424-6857.

- Trim Tool Set (T/N SOJATP2014)
- Plastic Trim Tool (T/N SILTRIMTL10)
- 16 mm Punch Tool (T/N 07AAH-TZ5A100)

Illustration of the Backup Sensors on the Vehicle



INSTALLATION

Customer Information: The information in this installation instruction is intended for use only by skilled technicians who have the proper tools, equipment, and training to correctly and safely add equipment to your vehicle. These procedures should not be attempted by “do-it-yourselfers.”

NOTE:

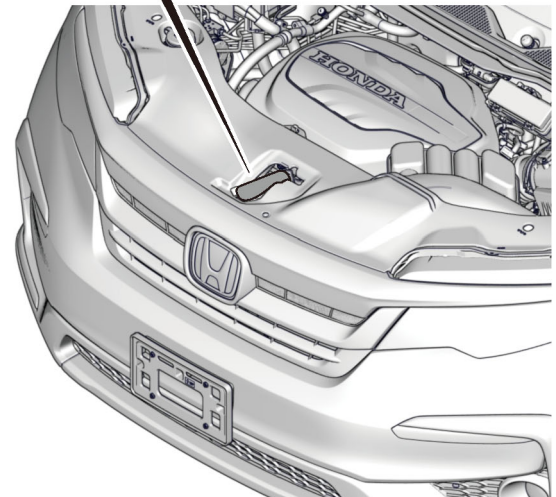
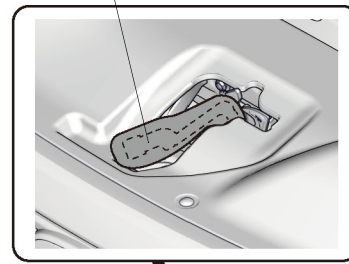
- If you are also installing the trailer hitch harness or rear welcome lights, install them after you install the backup sensors.
- Refer to Parts Information Bulletin (PIB) for the proper color sensors.

1. Open the tailgate.

2. Disconnect the negative cable from the battery:

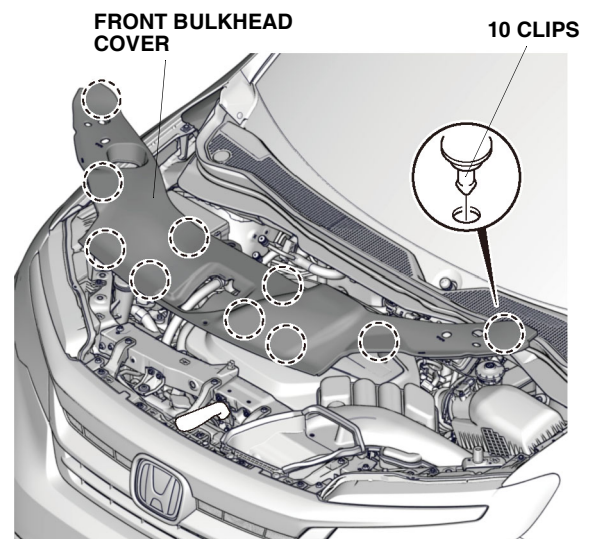
- Wrap a shop towel around the hood latch.

HOOD LATCH
(Wrap with a shop towel.)



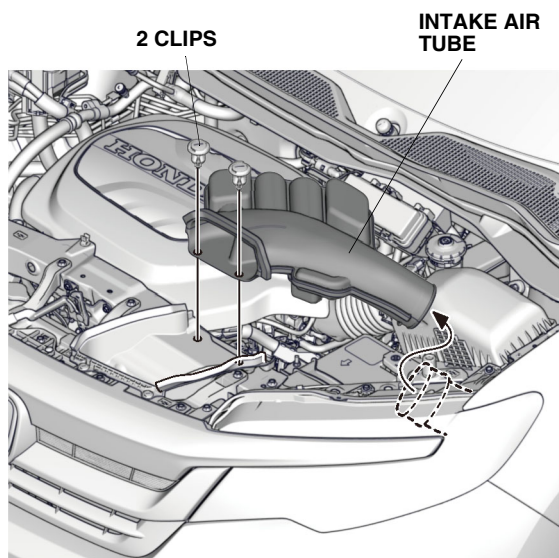
QH21201AB

- Remove the front bulkhead cover.



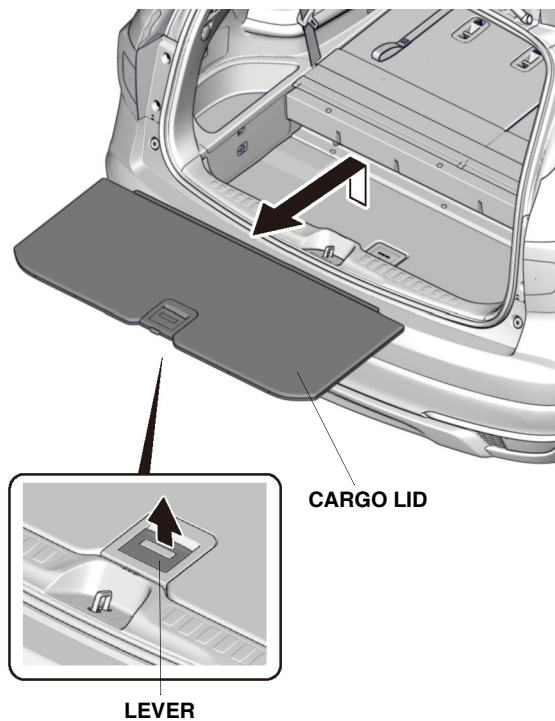
QH21202AB

- Remove the intake air tube.
- Disconnect the negative cable from the battery.



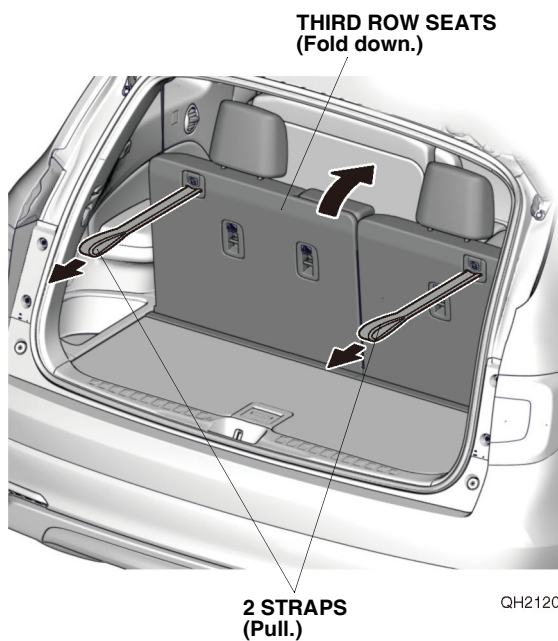
QH21203AB

4. Remove the cargo lid.



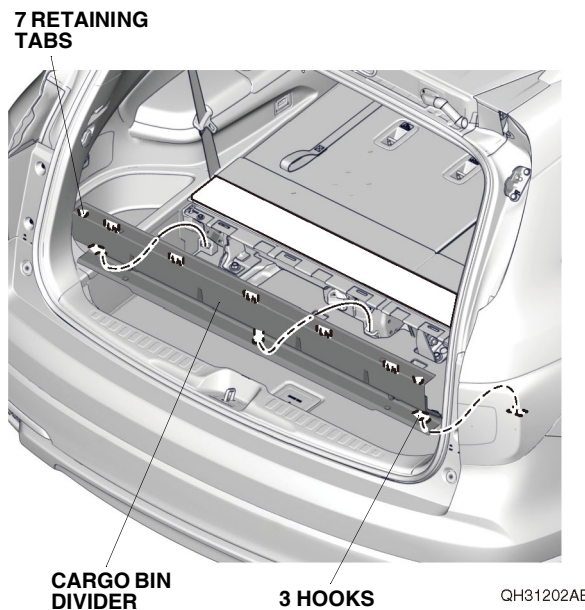
QH21205AB

3. Pull each strap, and fold down the third row seats.



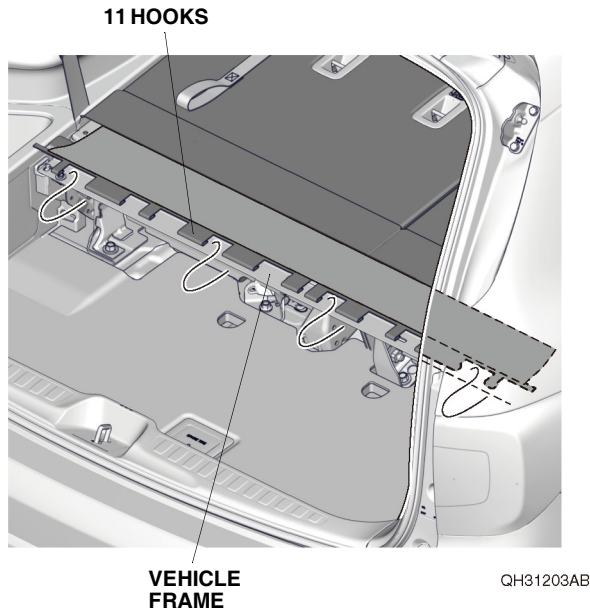
QH21204AB

5. Remove the cargo bin divider.

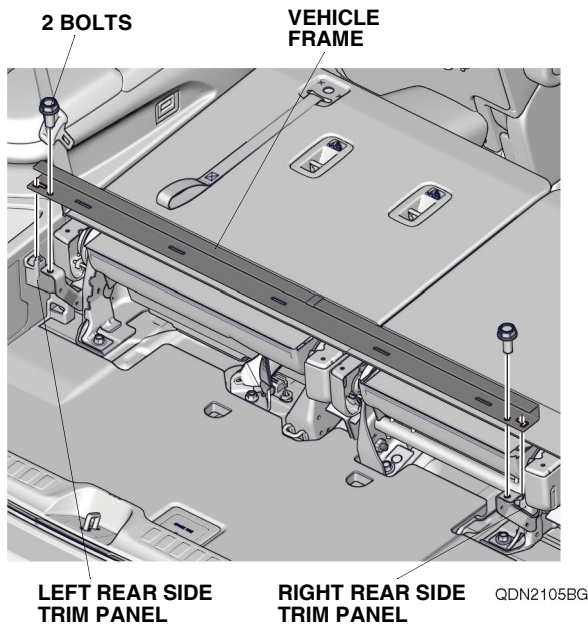


QH31202AB

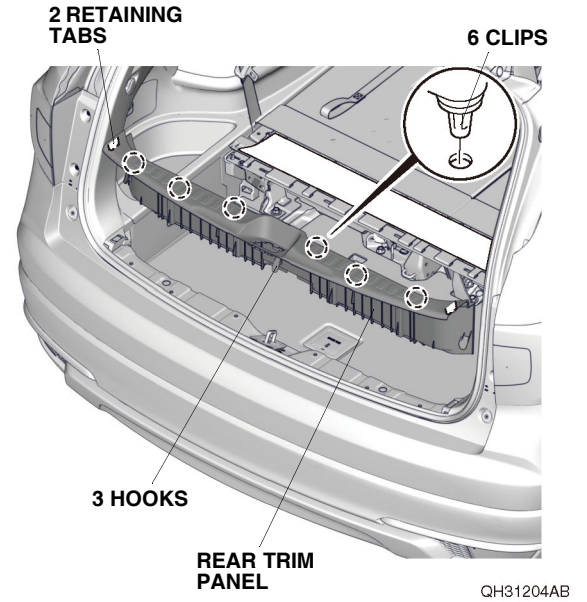
6. Release the 11 hooks.



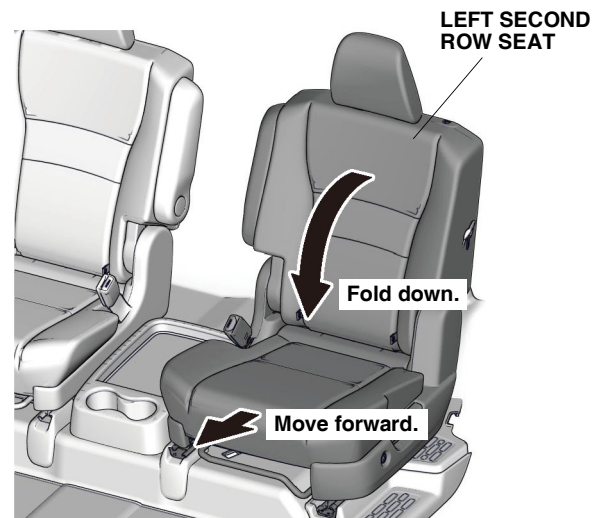
7. Remove the vehicle frame.



8. Remove the rear trim panel.

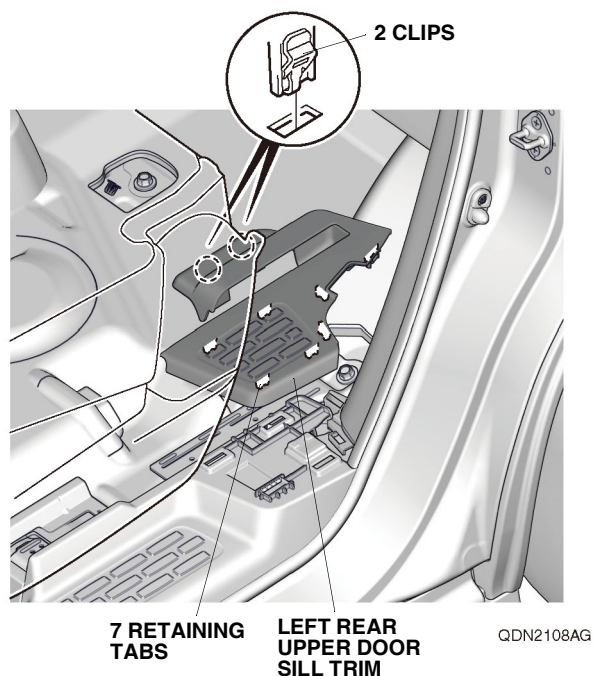


9. Fold down the left second row seat, and move it forward.

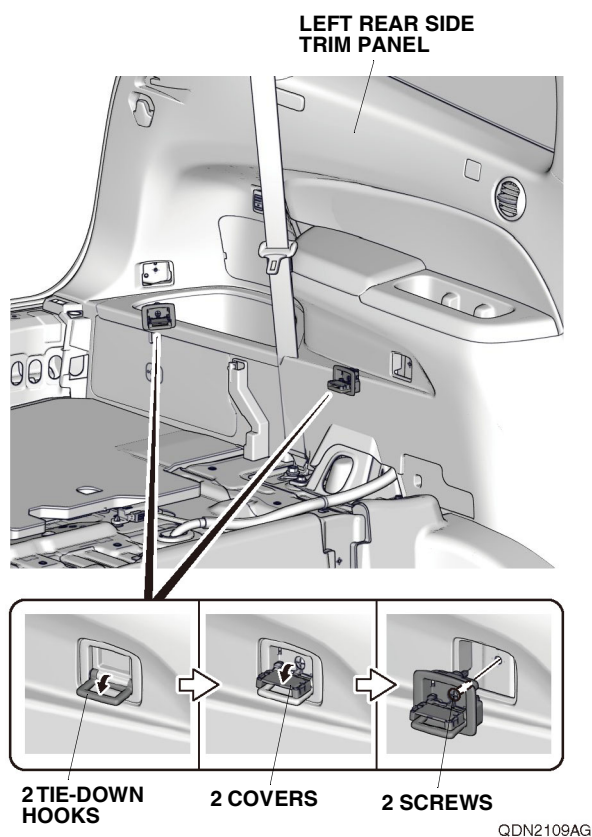


QDN2107AG

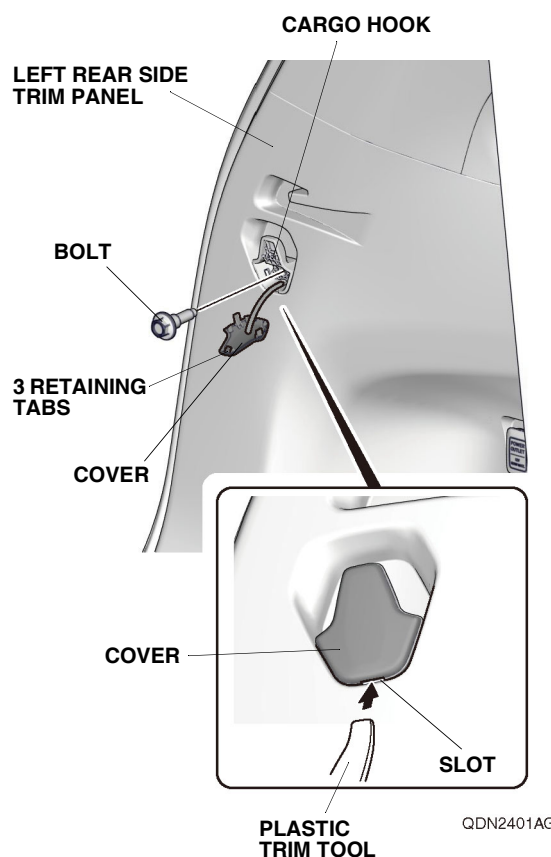
10. Remove the left rear upper door sill trim.



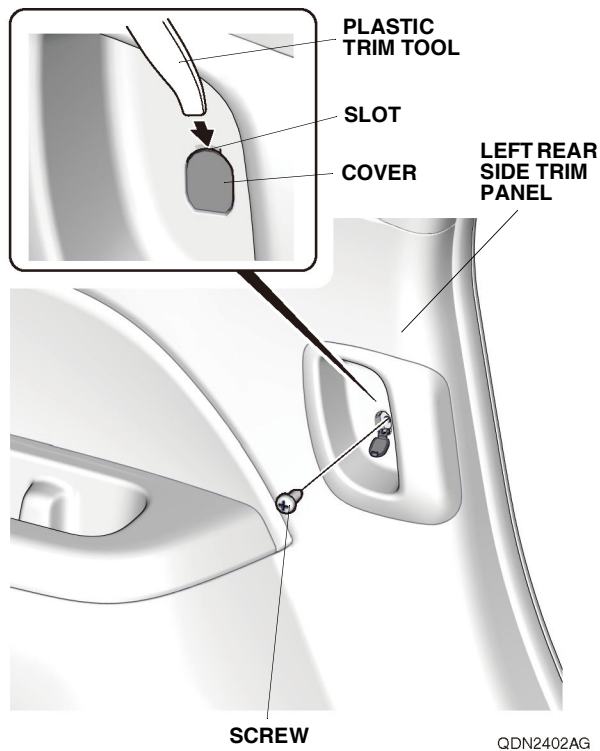
11. Using an impact screwdriver, remove the two tie-down hooks.



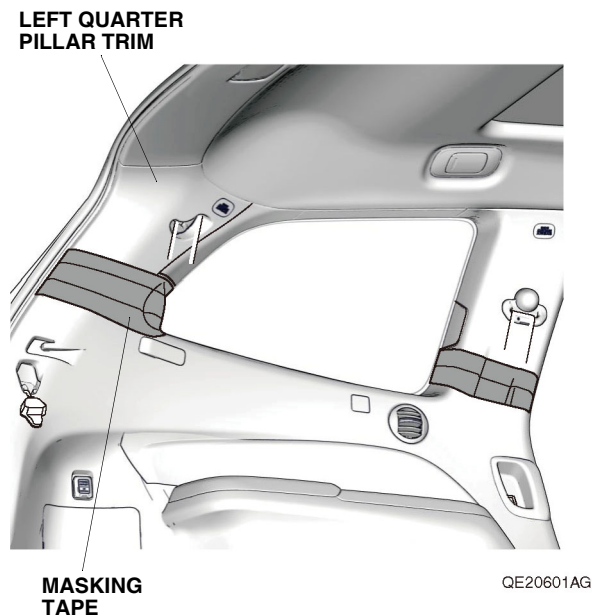
12. Using a plastic trim tool, pull the cover and remove the cargo hook.



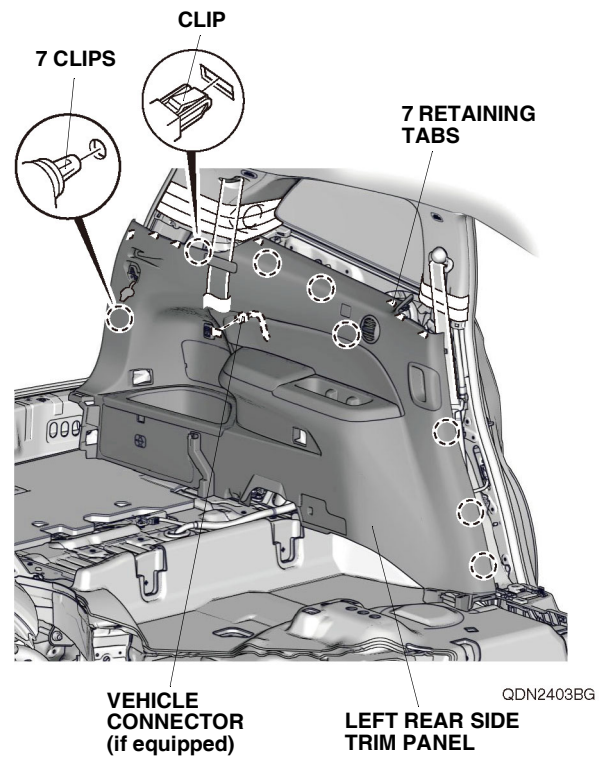
13. Using a plastic trim tool, pull the cover and remove the screw.



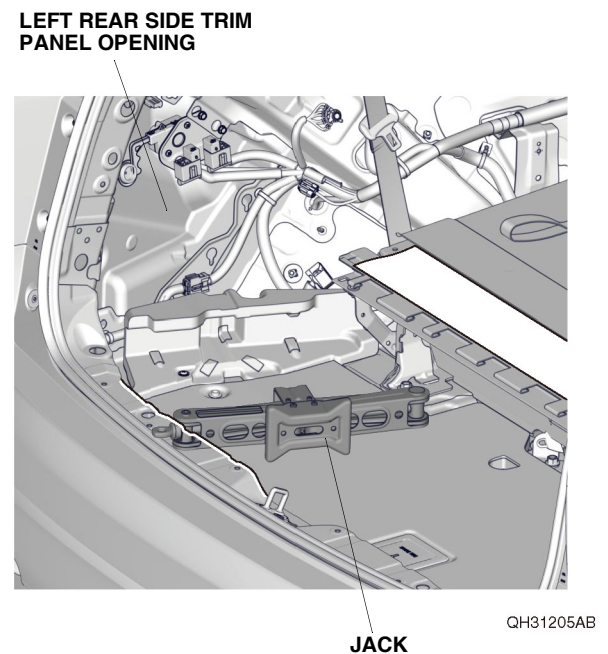
14. Apply masking tape to the left quarter pillar trim as shown.



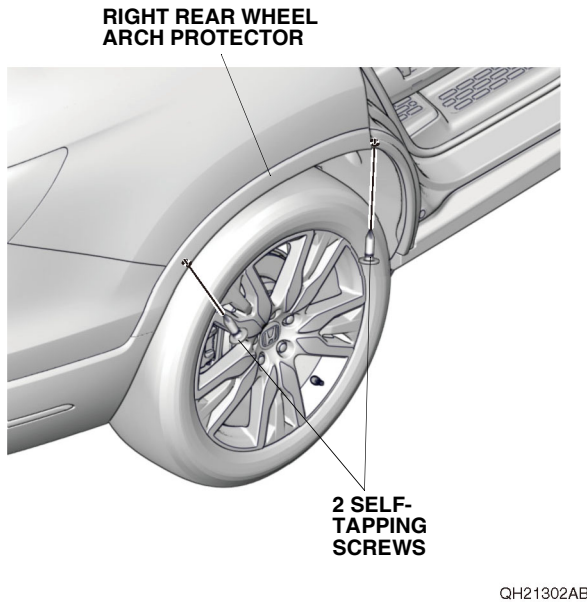
15. Remove the left rear side trim panel, and unplug the vehicle connector (if equipped).



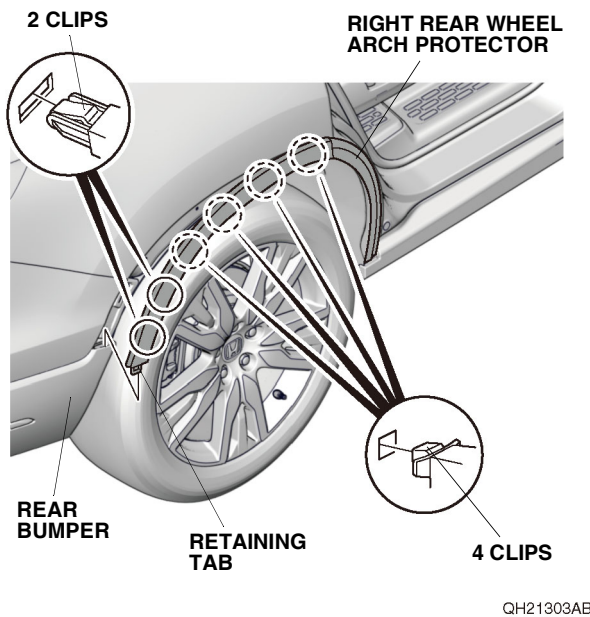
16. Remove the jack.



17. Open the right rear door.



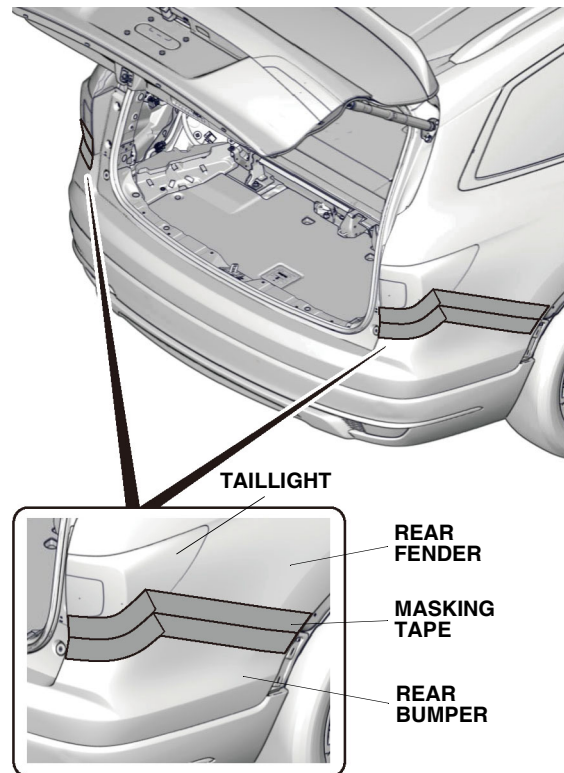
18. Remove the two self-tapping screws.
19. Release the right rear wheel arch protector.



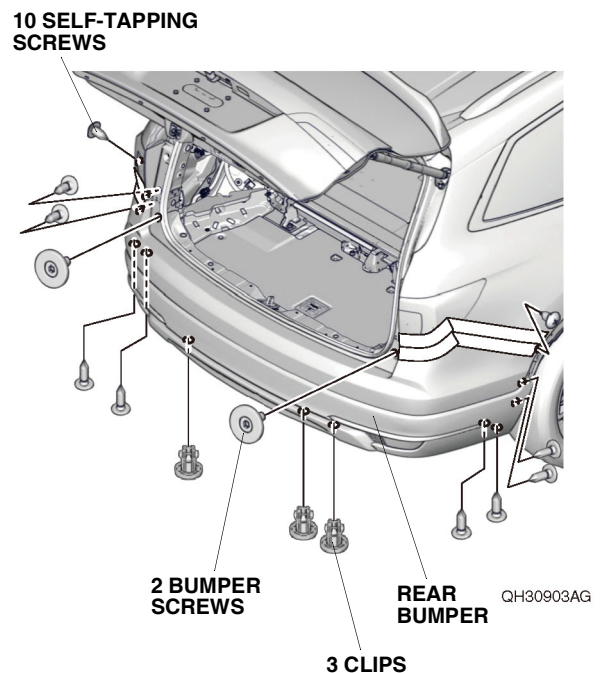
20. Repeat steps 17 through 19 on the left side of the vehicle.

21. Remove the rear bumper:

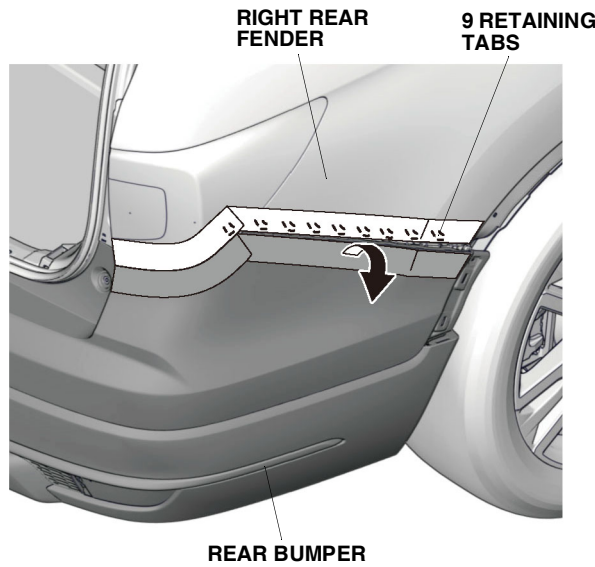
- Apply masking tape as shown.



- Remove the two bumper screws, 10 self-tapping screws, and three clips.

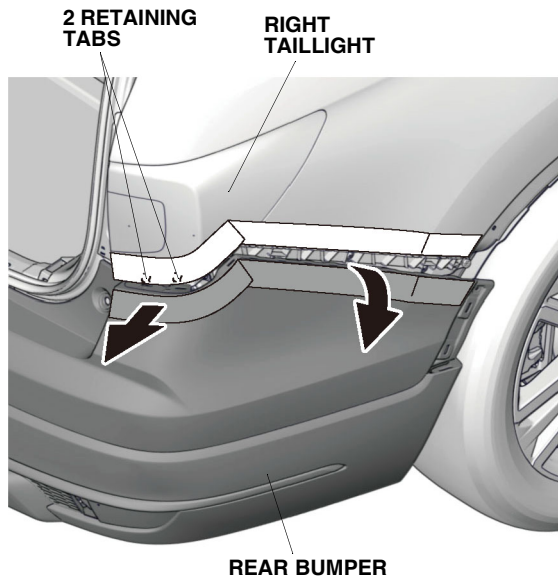


- With the help of an assistant, release the nine retaining tabs along the fenderwell on each side.



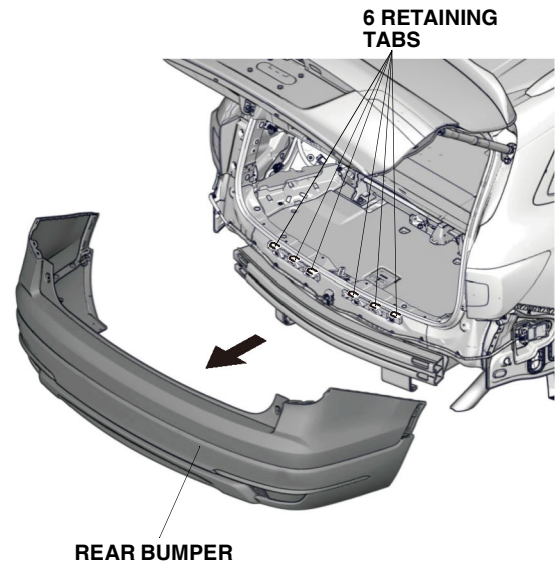
QH30904AG

- With the help of an assistant, release the two retaining tabs on each side.



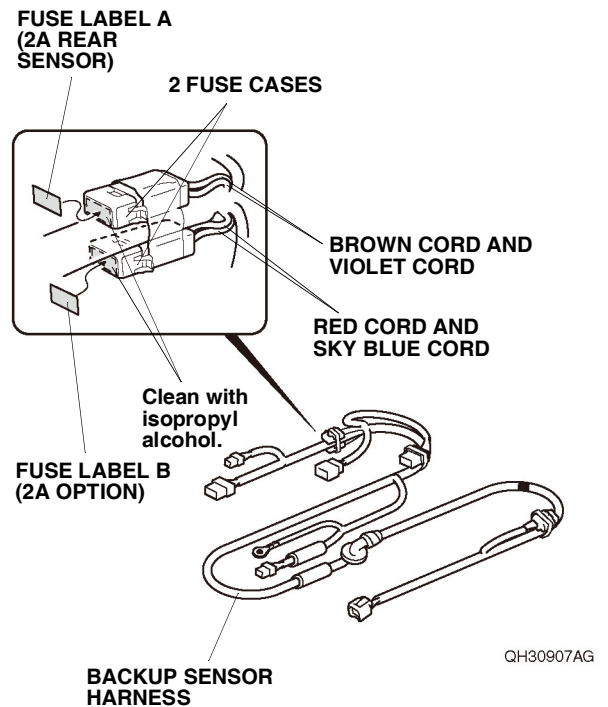
QH30905AG

- With the help of an assistant, remove the rear bumper.
- Place the rear bumper on a blanket.



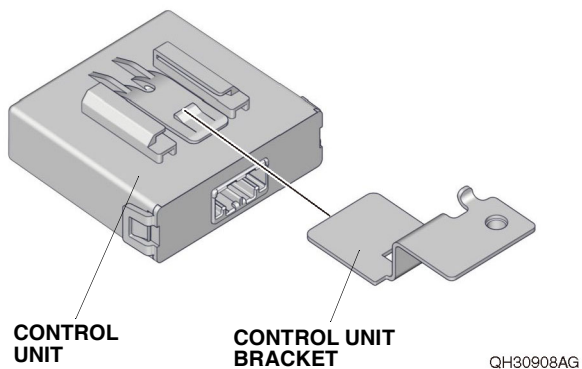
QH30906AG

22. Using isopropyl alcohol on a shop towel, thoroughly clean the fuse cases where the fuse labels will attach. Attach the fuse label A (2A REAR SENSOR) and fuse label B (2A OPTION) to the two fuse cases on the backup sensor harness as shown.

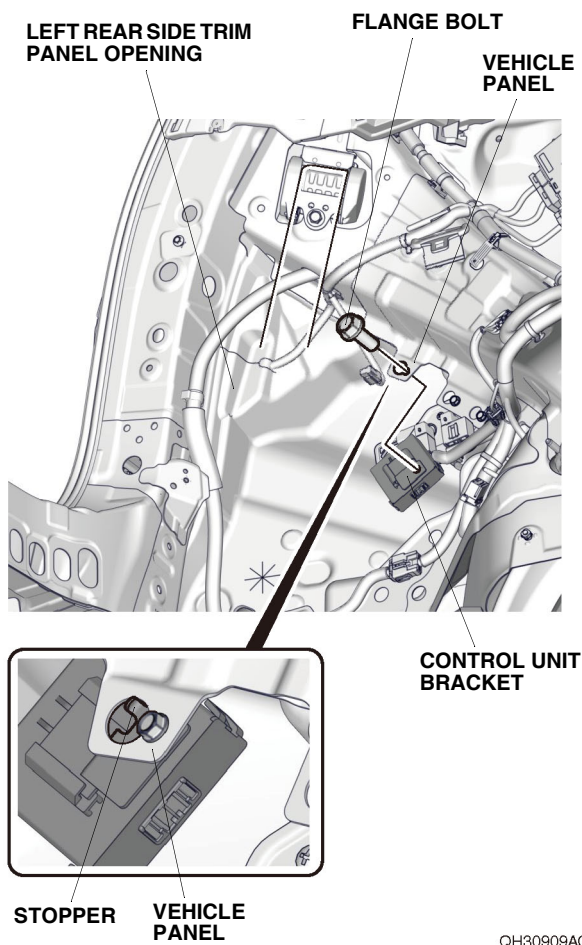


QH30907AG

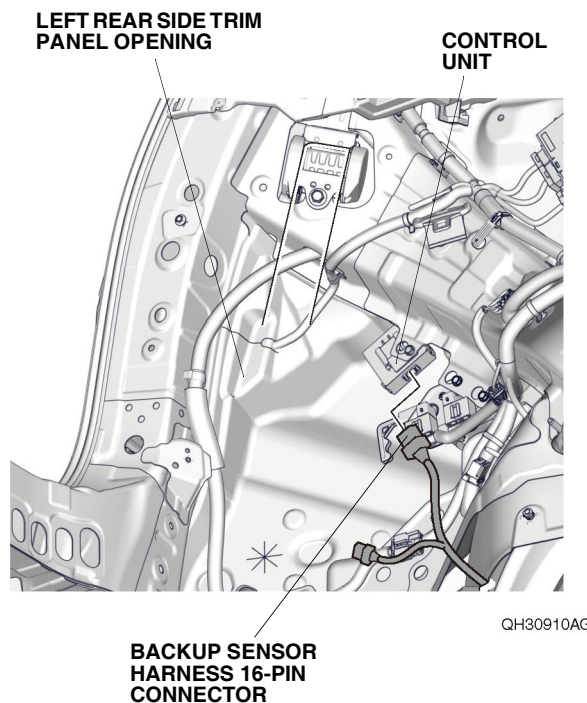
23. Install the control unit bracket to the control unit.



24. Install the control unit to the vehicle panel with one flange bolt as shown.



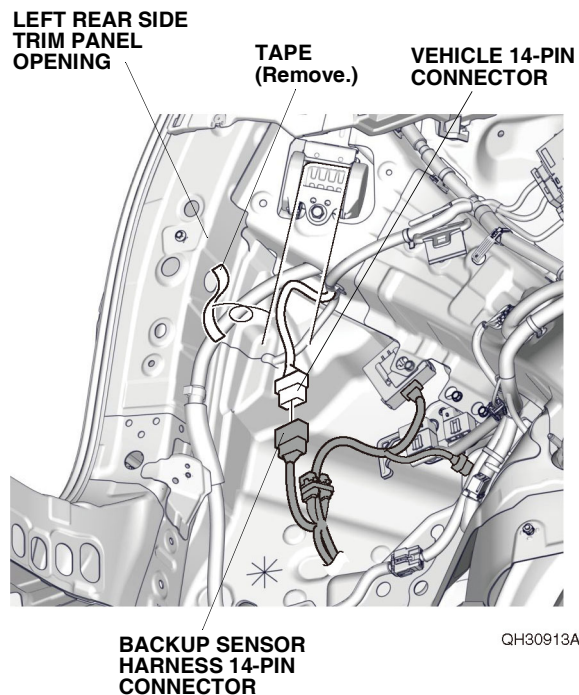
25. Plug the backup sensor harness 16-pin connector into the control unit.



If the vehicle is equipped with another accessory harness, go to step 27; otherwise, continue with step 26.

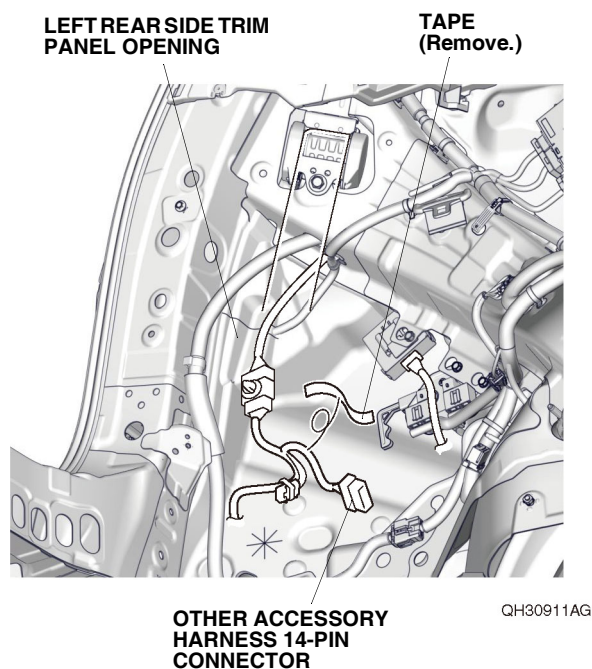
Without other accessory harness

26. Remove the tape to free the vehicle 14-pin connector, and plug it into the backup sensor harness 14-pin connector. Go to step 30.

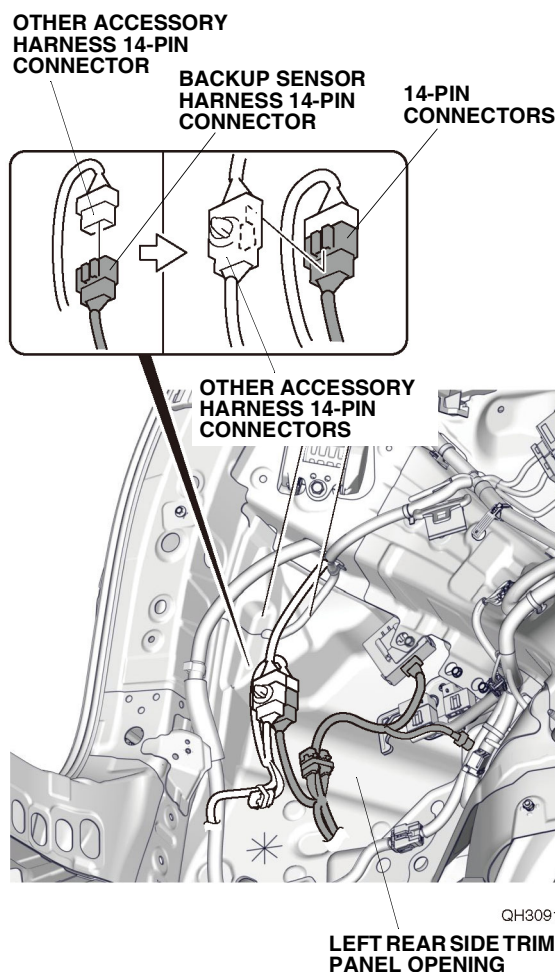


With another accessory harness

27. Remove the tape to free the other accessory harness 14-pin connector.

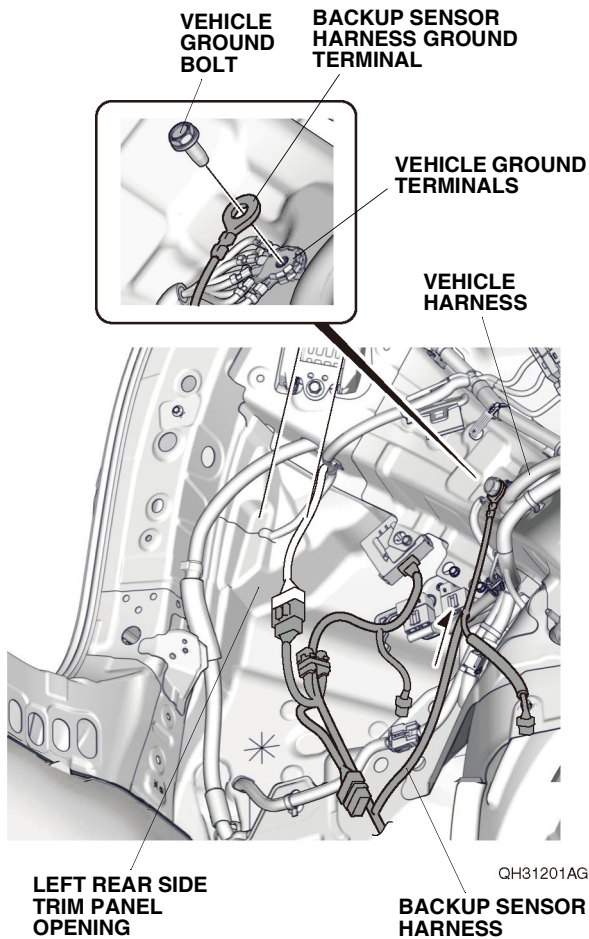


28. Plug the other accessory harness 14-pin connector into the backup sensor harness 14-pin connector.

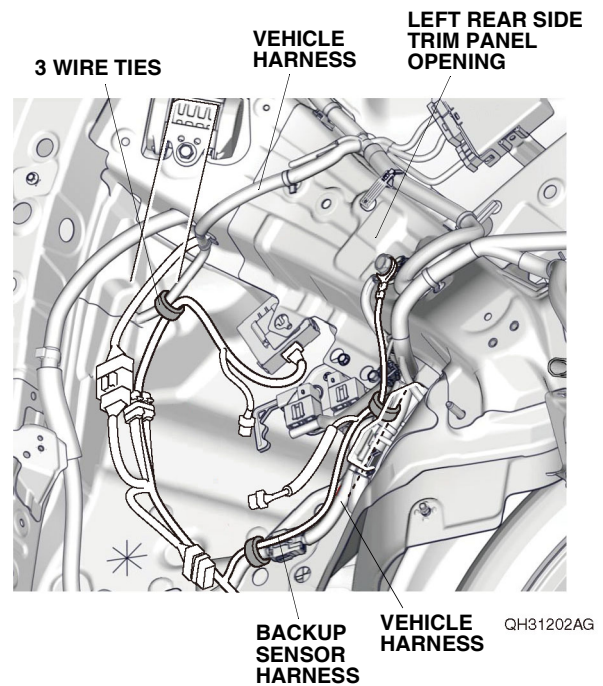


29. Install the 14-pin connectors to the other accessory harness 14-pin connectors as shown.

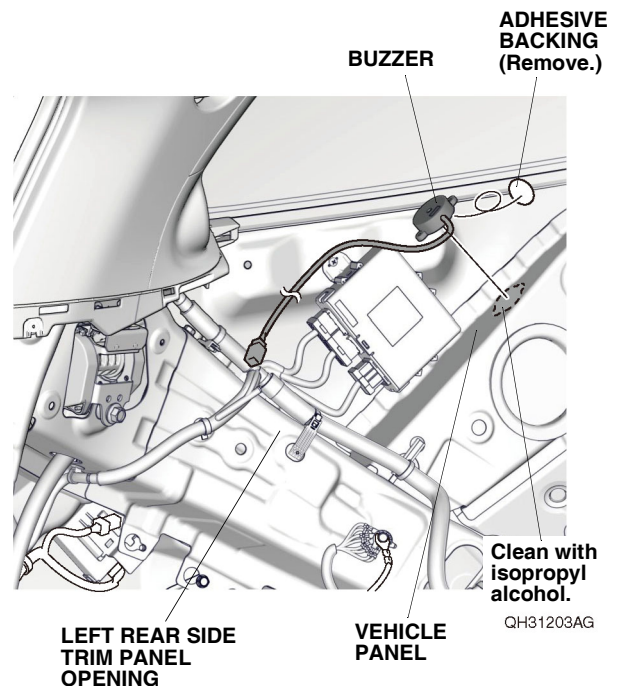
30. Route the backup sensor harness up along the vehicle harness. Remove the vehicle ground bolt, and secure the backup sensor harness ground terminal to the vehicle ground terminals with the vehicle ground bolt just removed.
NOTE: Do not put the ground terminal calkings on top of one another.



31. Secure the backup sensor harness to the vehicle harness with three wire ties.

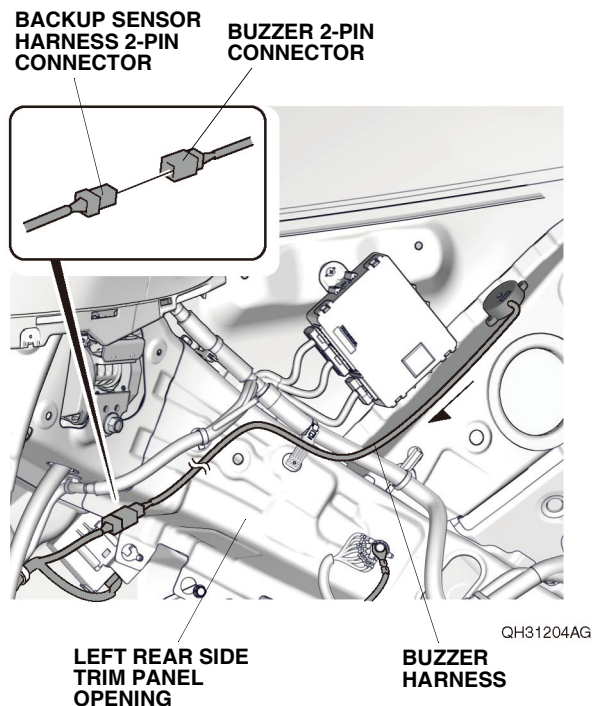


32. Using isopropyl alcohol on a shop towel, thoroughly clean the vehicle panel where the buzzer will attach.

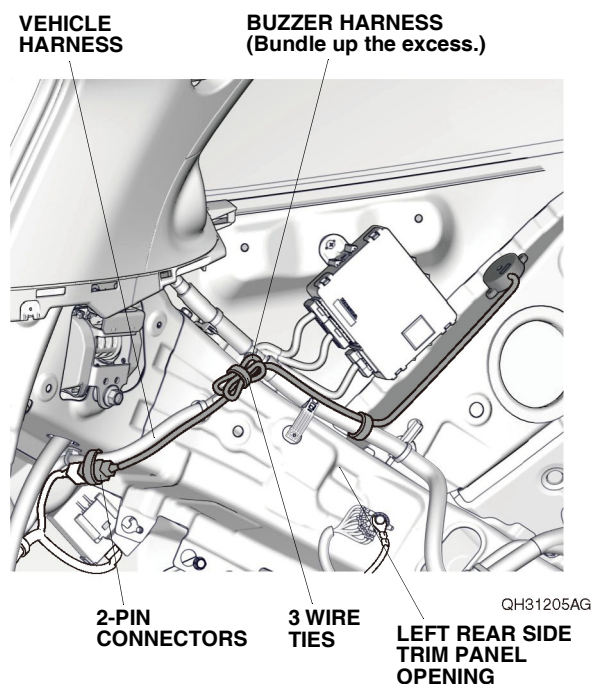


33. Remove the adhesive backing from the buzzer and attach the buzzer to the vehicle panel as shown.

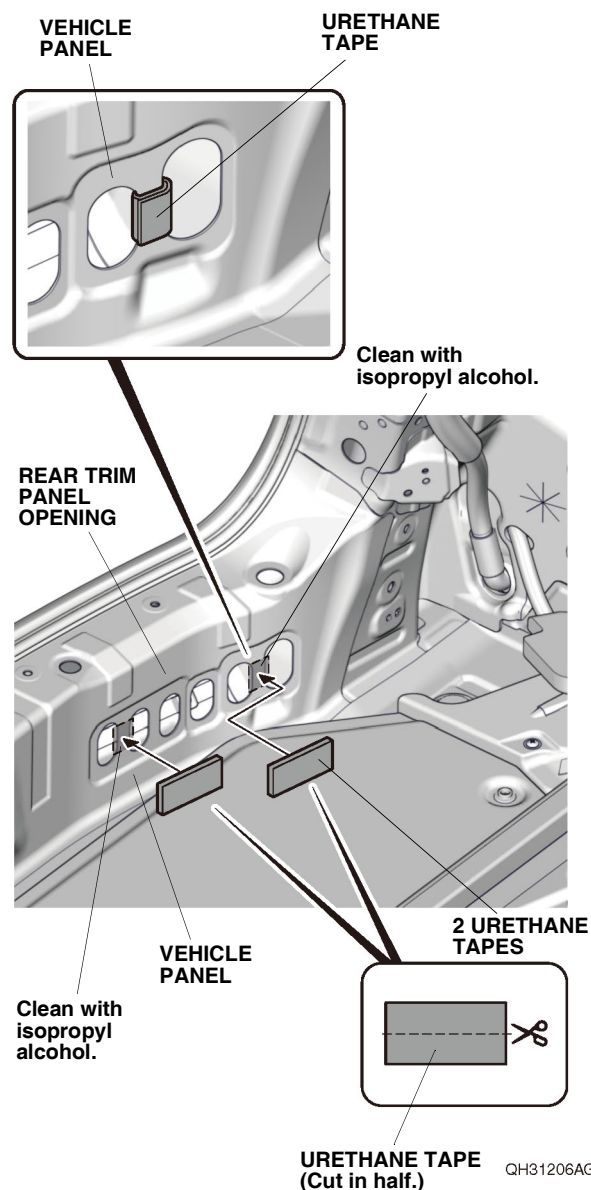
34. Route the buzzer harness, and plug the backup sensor harness 2-pin connector into the buzzer 2-pin connector.



35. Bundle up the excess buzzer harness, and secure it and the 2-pin connectors to the vehicle harness with three wire ties as shown.

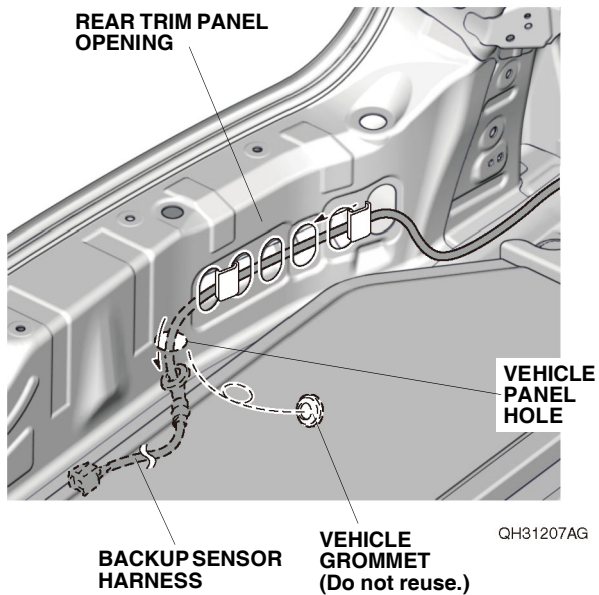


36. Using isopropyl alcohol on a shop towel, thoroughly clean the vehicle panel where the urethane tape will attach.



37. Using scissors, cut one urethane tape in half, and attach the two pieces to the vehicle panel as shown.

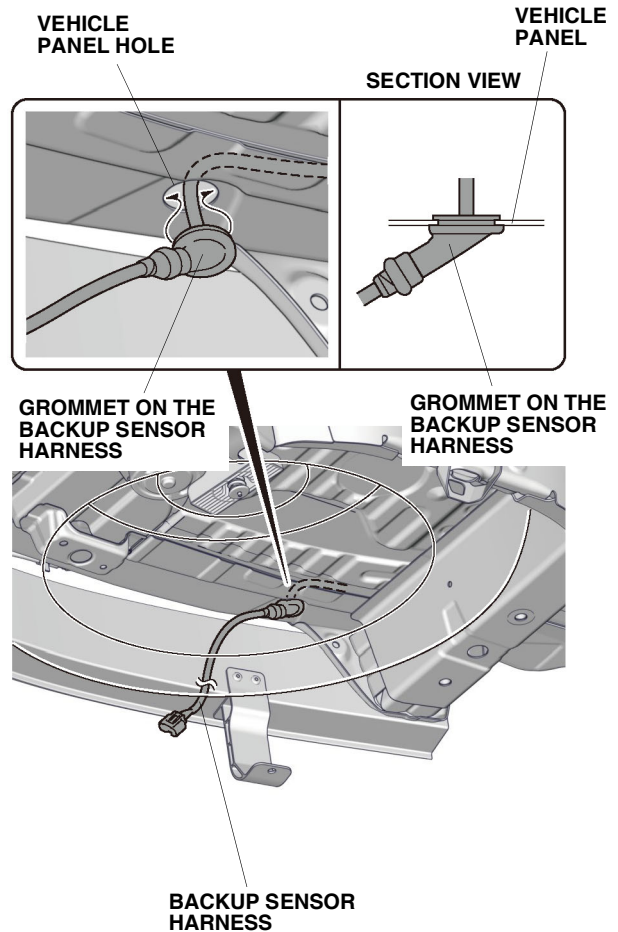
38. Remove the vehicle grommet. Route the backup sensor harness through the vehicle panel hole as shown.



39. Secure the grommet on the backup sensor harness to the vehicle panel hole.

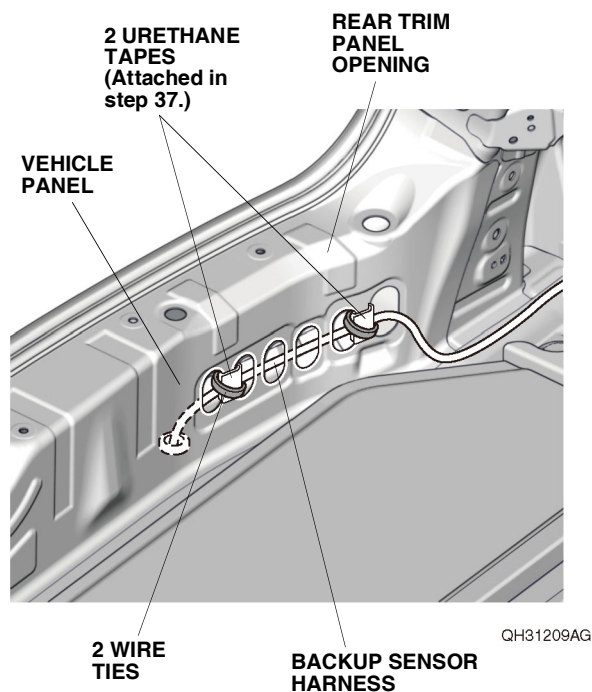
NOTE:

- Install the backup sensor harness by holding the grommet.
- Make sure the grommet is seated properly.

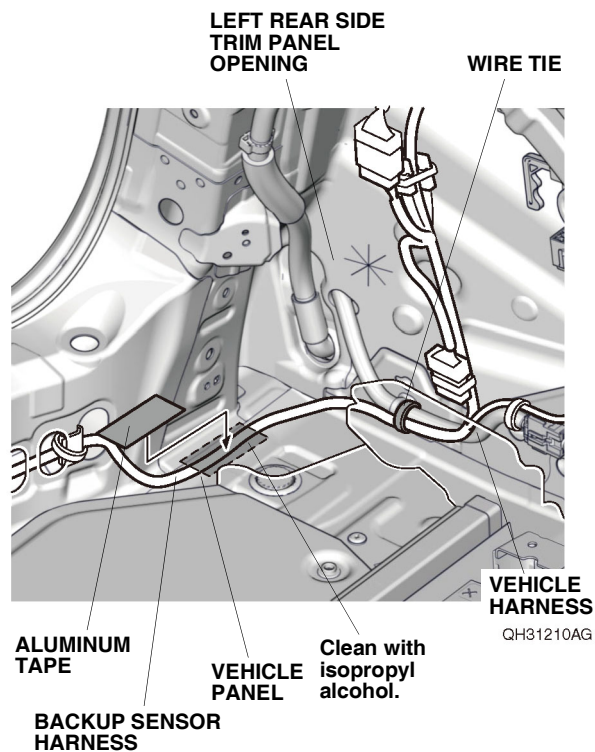


QH31208AG

40. Secure the backup sensor harness to the vehicle panel with two wire ties as shown.

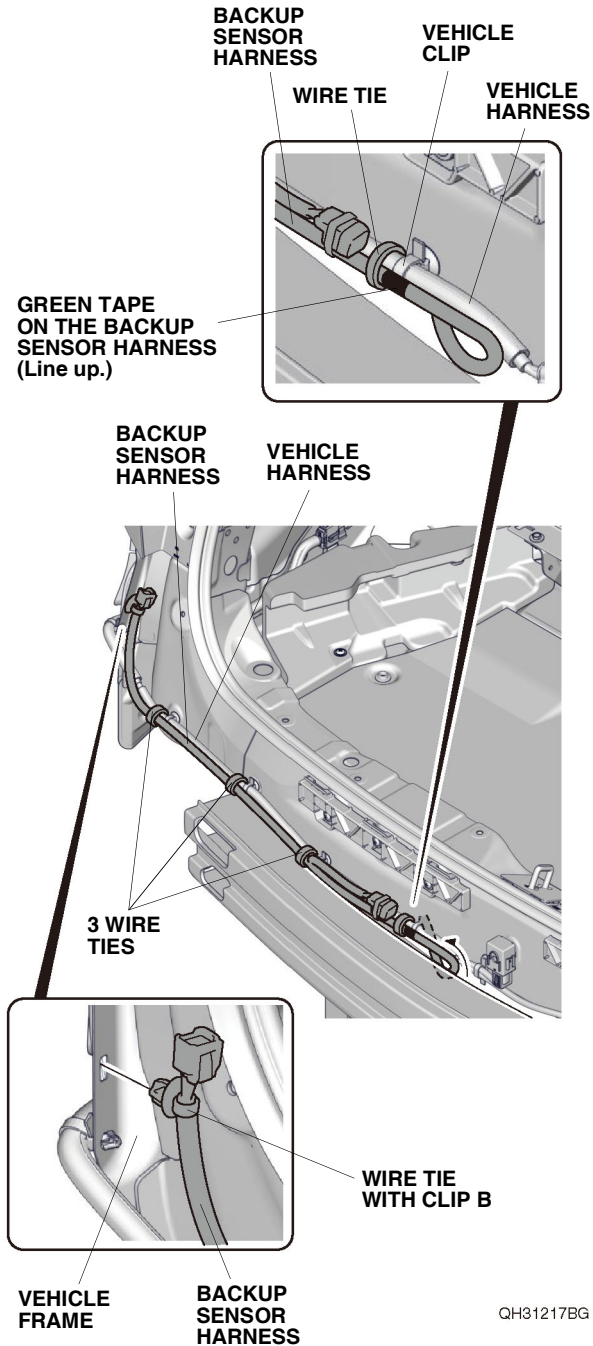


41. Using isopropyl alcohol on a shop towel, thoroughly clean the vehicle panel where the aluminum tape will attach.

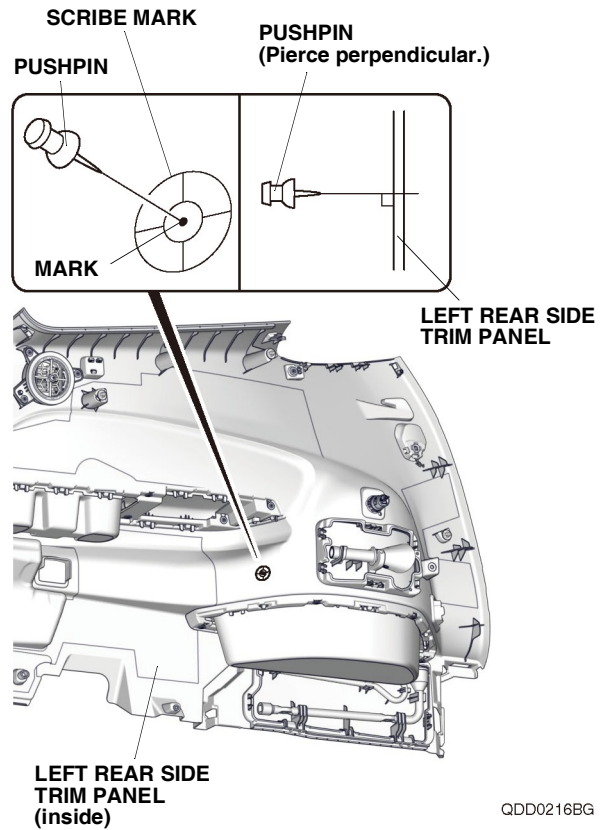


42. Secure the backup sensor harness to the vehicle panel with one piece of aluminum tape as shown.
43. Secure the backup sensor harness to the vehicle harness with one wire tie.

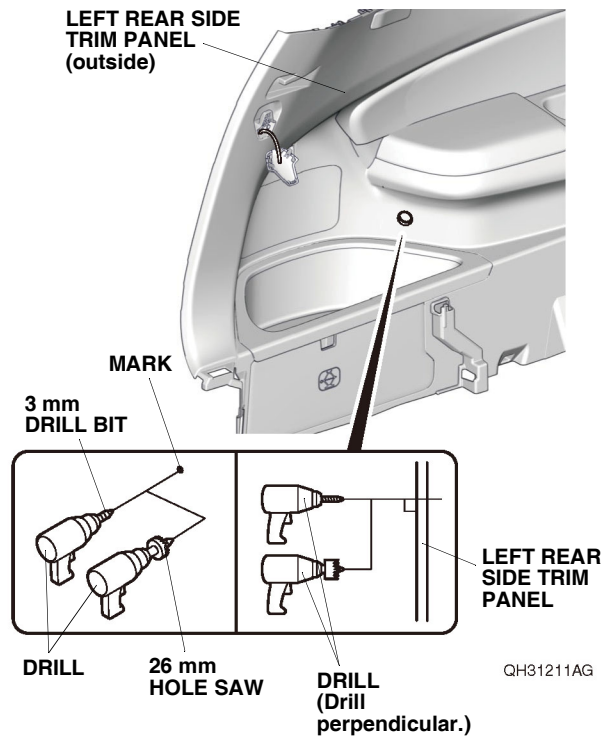
44. Route the backup sensor harness along the vehicle harness. Line up the green tape on the backup sensor harness with the vehicle clip, and secure the backup sensor harness to the vehicle harness and vehicle frame with four wire ties and one wire tie with clip B as shown.



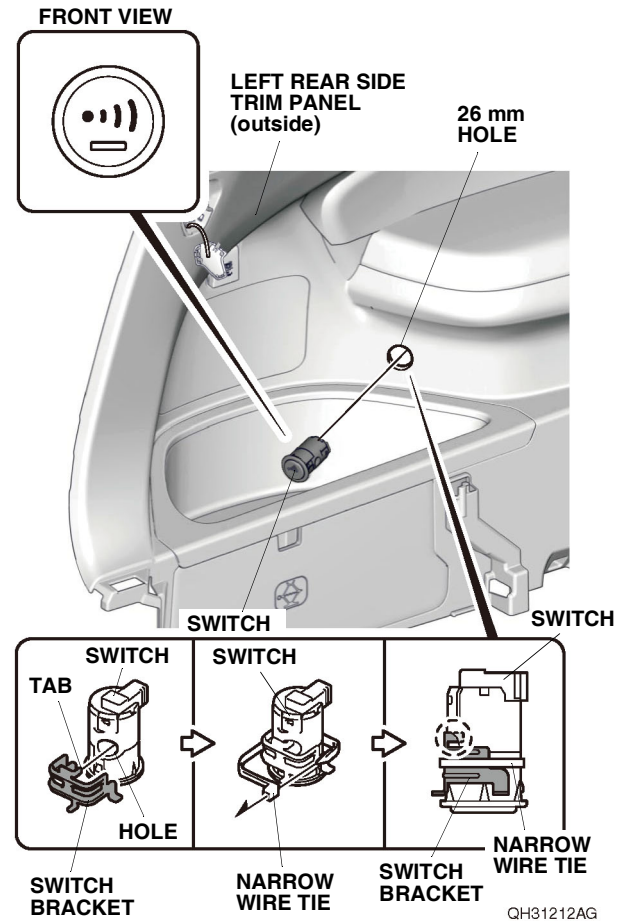
45. Using a pushpin, pierce the left rear side trim panel as shown.
NOTE: Make sure to pierce perpendicular to the left rear side trim panel.



46. While wearing eye protection, drill the pierced mark on the left rear side trim panel using a 3 mm drill bit. Enlarge the 3 mm hole to 26 mm using a 26 mm hole saw, and remove any burrs.
NOTE: Make sure to drill perpendicular to the left rear side trim panel.

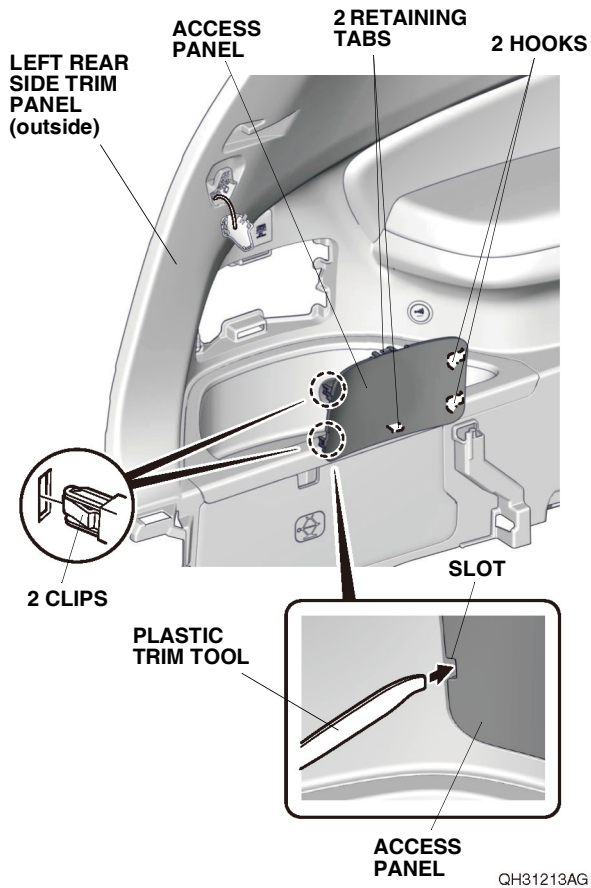


47. Install the switch into the 26 mm hole.
NOTE: Make sure to install the switch in the correct orientation.



48. Line up the tab on the switch bracket with the hole on the switch and secure the switch bracket to the switch with one narrow wire tie.
NOTE: Firmly press the switch bracket against the left rear side trim panel, and make sure that there is no clearance between the switch and left rear side trim panel.

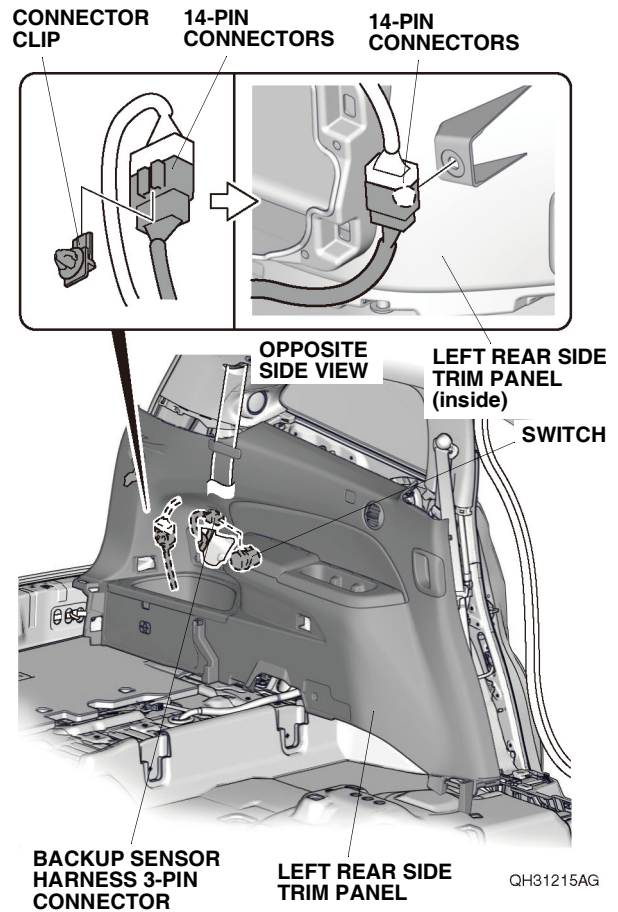
49. Using a plastic trim tool, and remove the access panel.



If the vehicle is equipped with another accessory harness, go to step 53; otherwise, continue with step 50.

Without other accessory harness

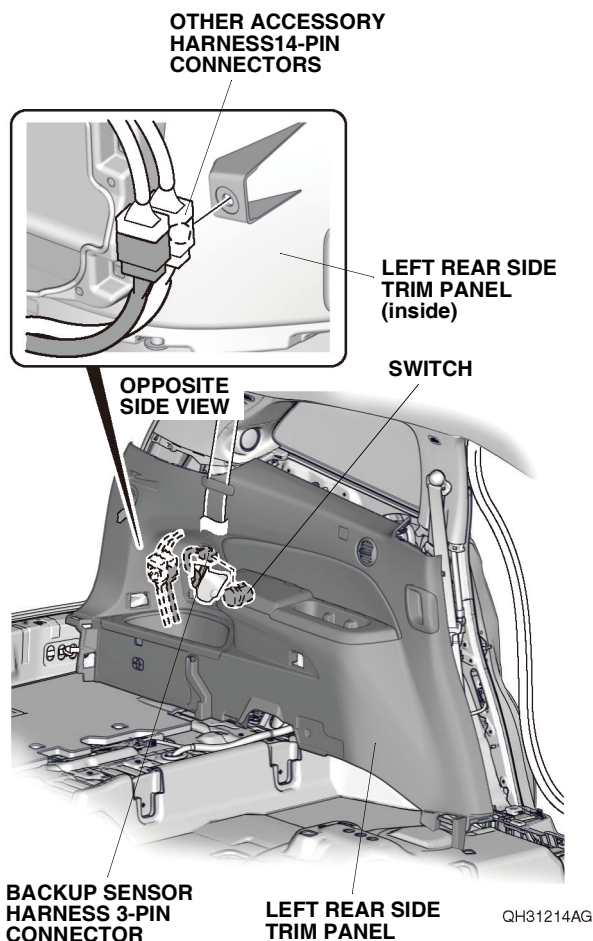
50. Install the jack. Bring the left rear side trim panel into position. Plug the backup sensor harness 3-pin connector into the switch.



51. Install the connector clip to the 14-pin connectors. Secure the 14-pin connectors to the left rear side trim panel with one connector clip as shown.
52. Install the left rear side trim panel. Go to step 56.

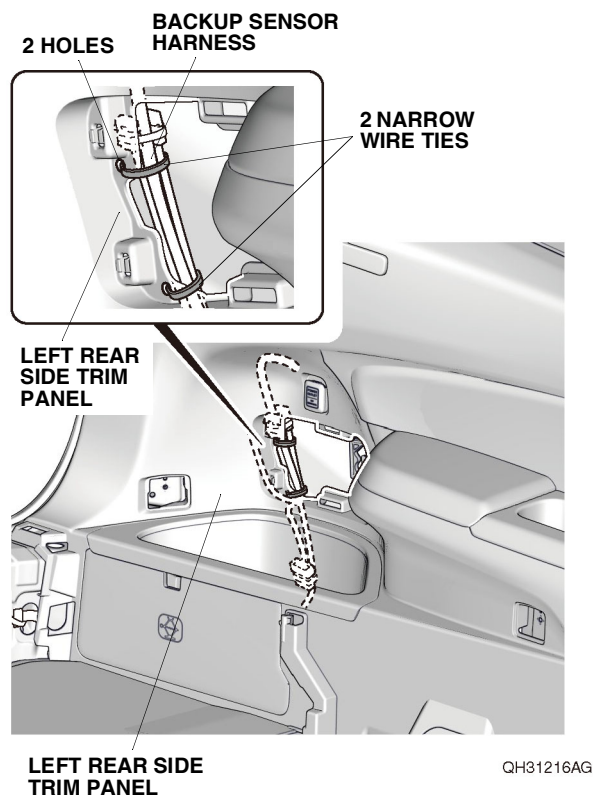
With another accessory harness

53. Install the jack. Bring the left rear side trim panel into position. Plug the backup sensor harness 3-pin connector into the switch.

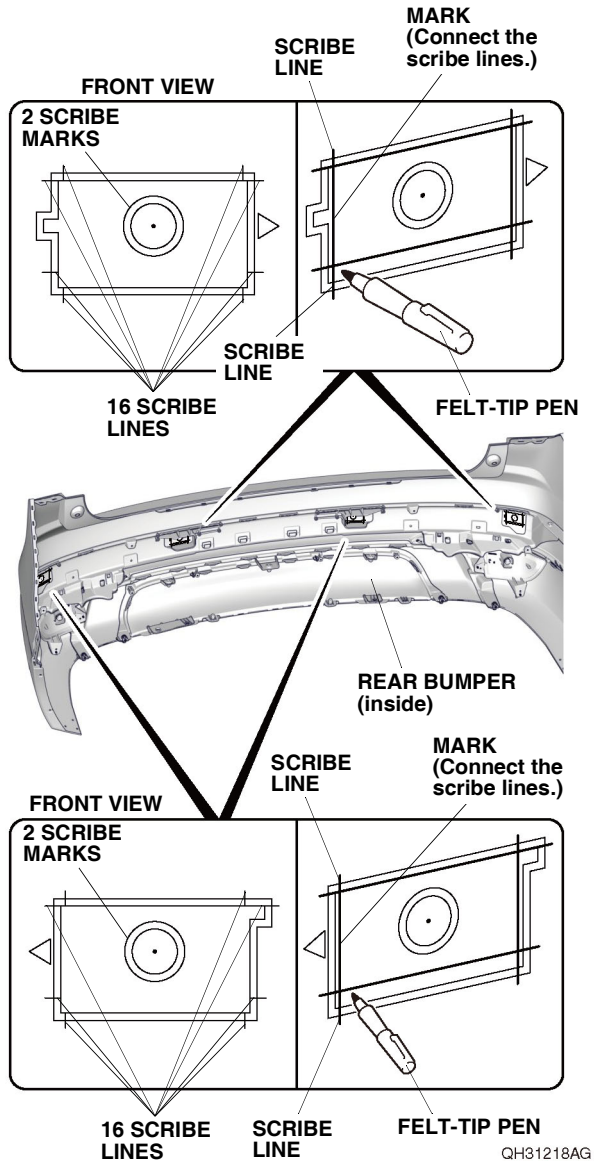


54. Secure the other accessory harness 14-pin connectors to the left rear side trim panel as shown.
55. Install the left rear side trim panel.

56. Secure the backup sensor harness to the left rear side trim panel with two narrow wire ties as shown.

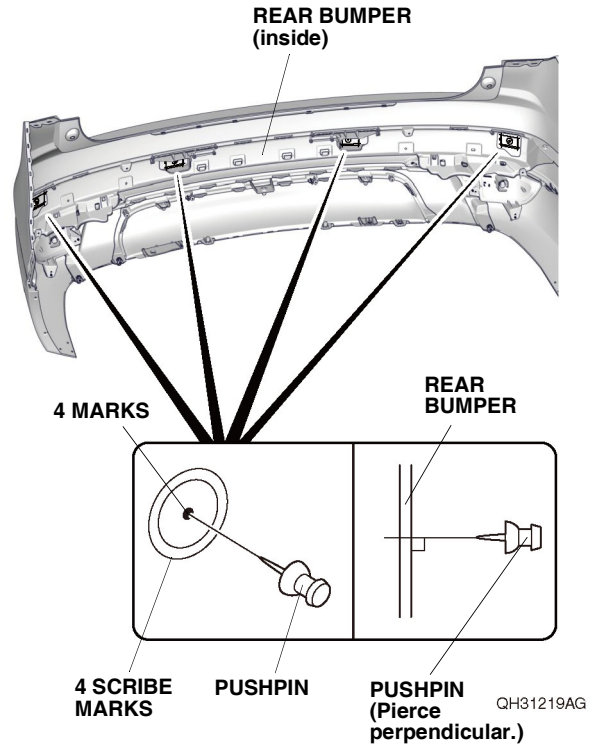


57. Using a felt-tip pen, mark the rear bumper as shown.

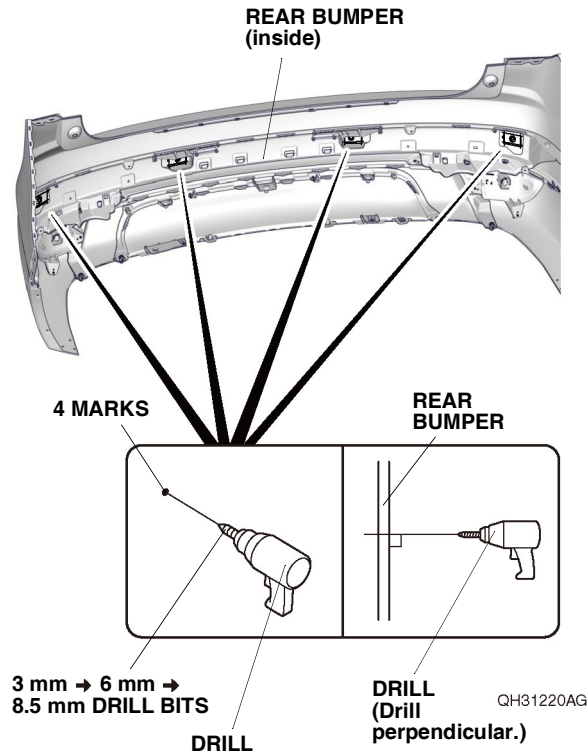


58. Mark the inside of the rear bumper:

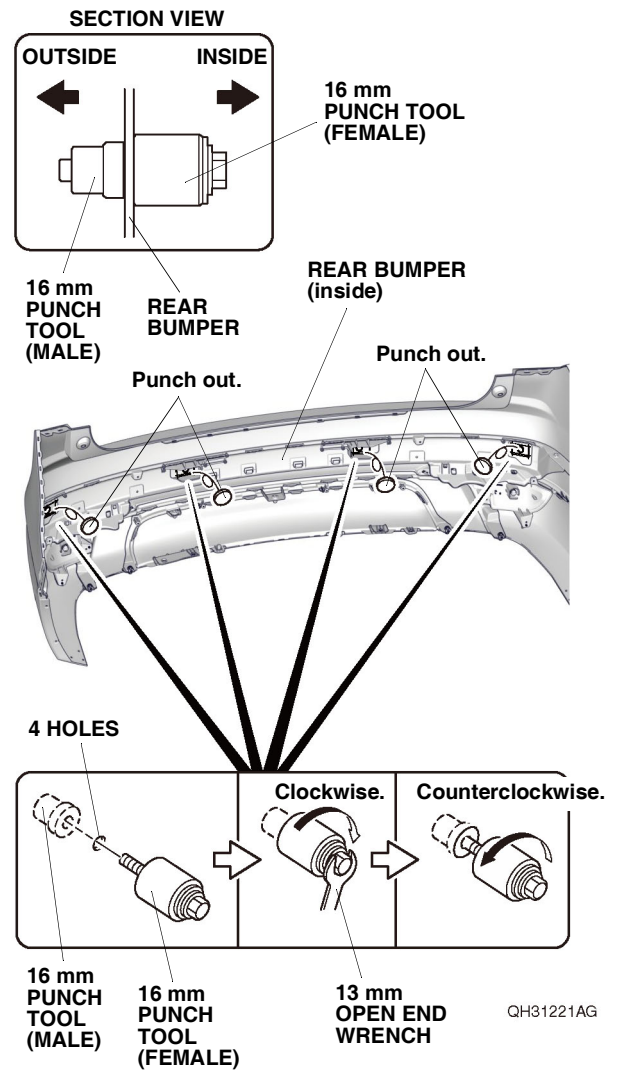
- Locate the four scribe marks on the inside of the rear bumper.
- Using a pushpin, pierce the rear bumper at the center of the four scribe marks.
NOTE: Make sure to pierce the scribe marks perpendicular to the rear bumper.



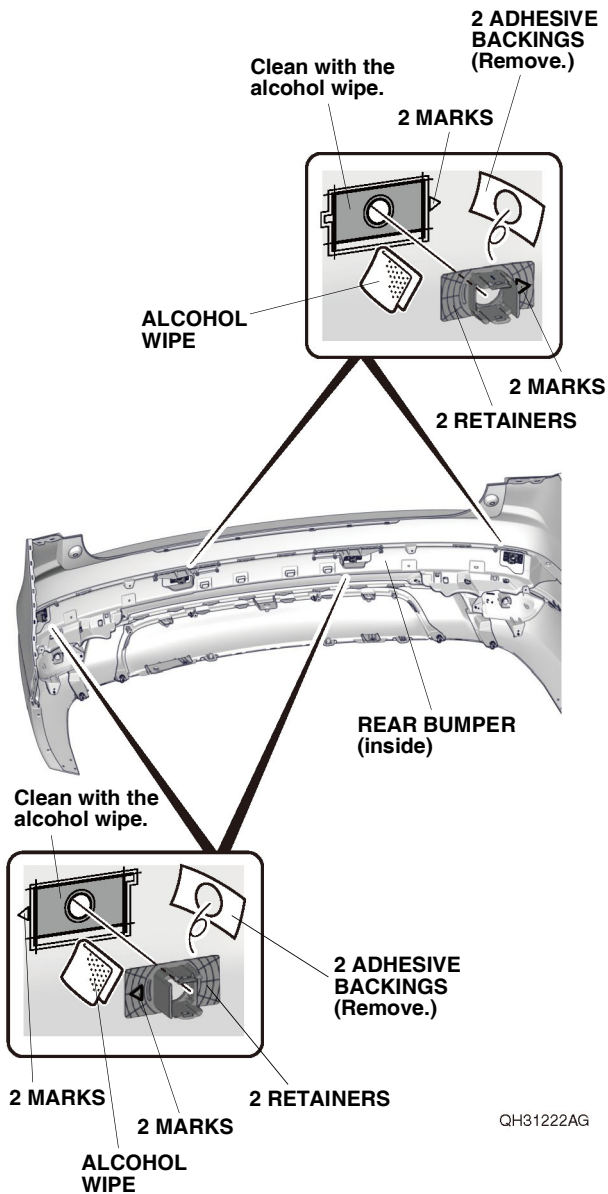
59. While wearing eye protection, drill the four pierced marks to 8.5 mm from the inside of the rear bumper. First, drill with a 3 mm drill bit, then follow with a 6 mm drill bit, and finish with an 8.5 mm drill bit.
NOTE: Make sure to drill perpendicular to the rear bumper.



60. Using a 16 mm punch tool, punch out the four rear bumper holes as shown.
NOTE: Make sure to hold the punch perpendicular to the rear bumper. Remove any burrs.

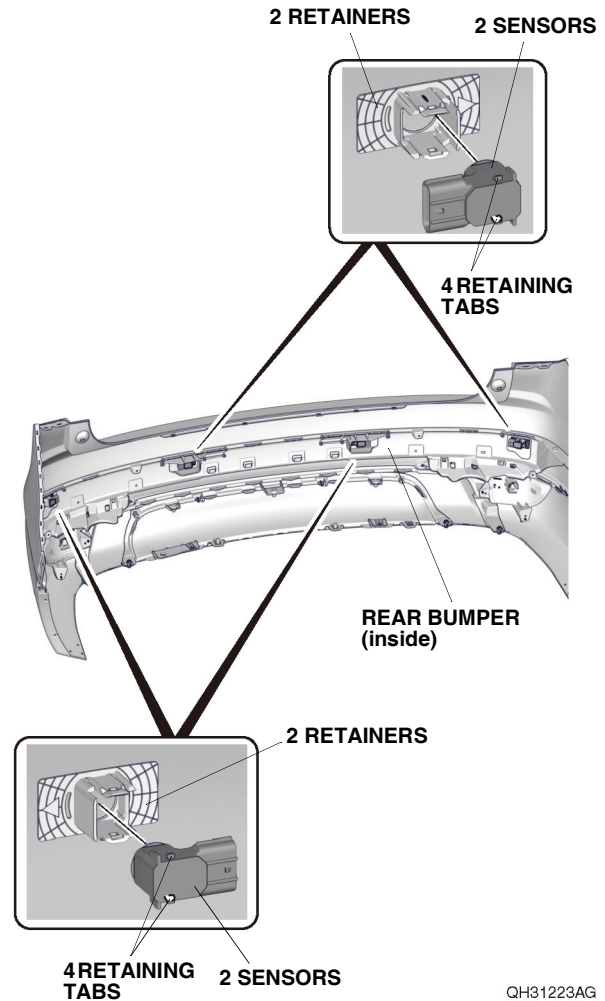


61. Using the two alcohol wipes, thoroughly clean the rear bumper where the four retainers will attach.

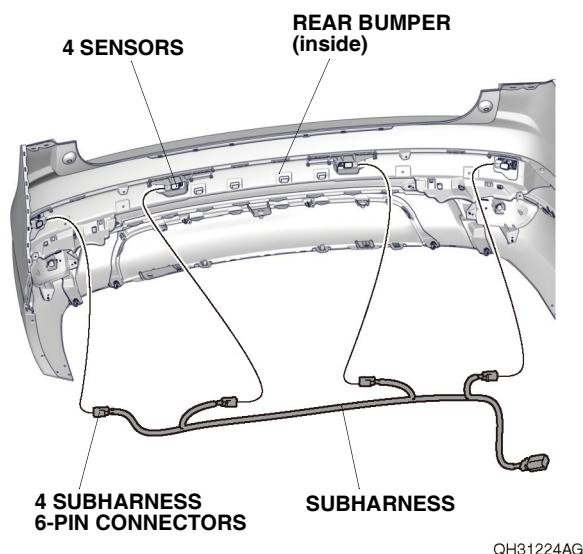


62. Remove the four adhesive backings from the four retainers, and attach the four retainers to the rear bumper as shown.
NOTE: Make sure the retainers are attached in the proper orientation.

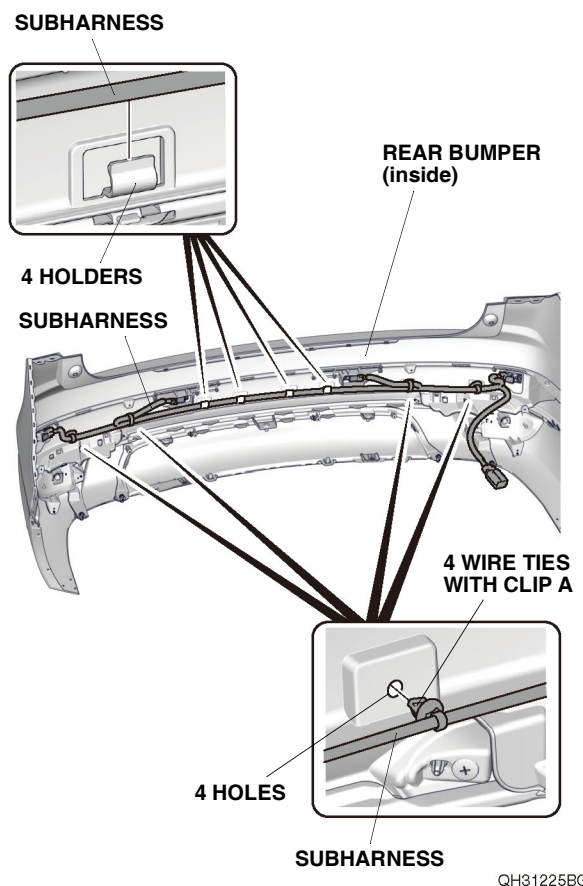
63. Install the four sensors to the four retainers.



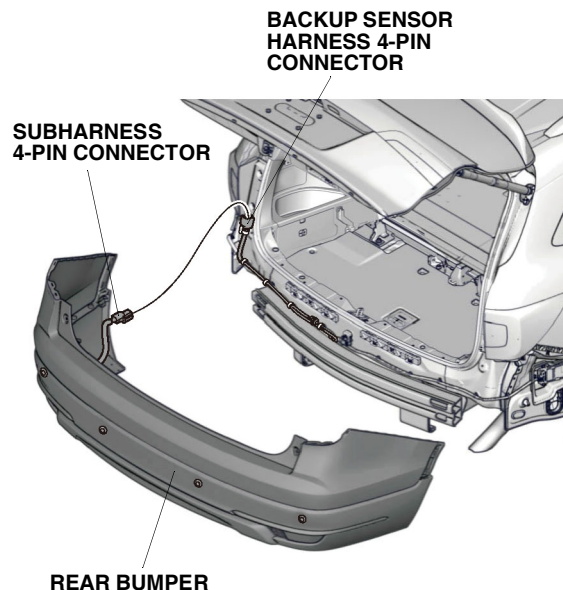
64. Plug the four subharness 6-pin connectors into the four sensors.



65. Secure the subharness to the rear bumper with four wire ties with clip A and four holders as shown.



66. With the help of an assistant, bring the rear bumper close to the vehicle, and plug the subharness 4-pin connector into the backup sensor harness 4-pin connector. Install the rear bumper.



67. Check that all wire harnesses are routed properly and that all connectors are plugged in.
68. Install all removed parts except for the front bulkhead cover and the intake air tube.
69. Connect the negative cable to the battery.
70. Install the front bulkhead cover and the intake air tube.
71. Press and hold the audio unit power button for 2 seconds to restore the audio and navi (if equipped) system functions.
72. Set the clock on vehicles without navigation.
73. If necessary, restore the systems back to normal operation as described in the service information.

Check the Operation of the Backup Sensors

74. Make sure that the backup sensors work properly as described in the accessory user's information manual in this kit.