



HONDA INSTALLATION INSTRUCTIONS

Accessory
ROOF RAILS
P/N 08L02-TG7-103

Application
2018 PILOT

Publications No.
VERSION 2
Issue Date
DEC 2017

PARTS LIST

Left roof rail base



Right roof rail base



Left roof rail cover



Right roof rail cover



8 TORX nuts, 8 mm



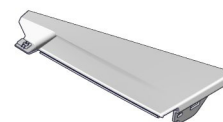
6 TORX nuts, 6 mm



2 TORX screws



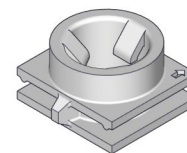
Left tailgate hinge cover



Right tailgate hinge cover



2 Clips
(May not be used)



TOOLS AND SUPPLIES REQUIRED

Ratchet

12 mm Socket

Torque wrench

Ruler

T-15, T-30, and T-40 TORX bits

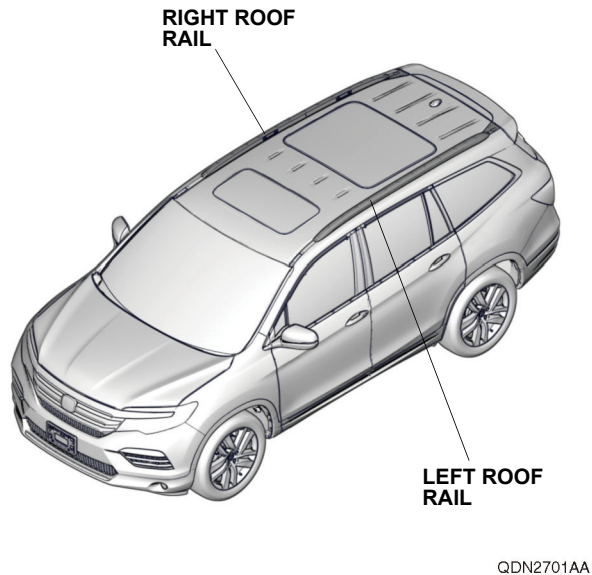
Eye protection (face shield, safety goggles, etc.)

Reciprocating saw (air saw) with 32 tpi blade

The following tool is available through the Honda Tool and Equipment Program. On the iN, click on: Service > Service Bay > Tool and Equipment Program, then enter the number under "Search". Or, call 888-424-6857.

- Plastic trim tool (T/N SILTRIMTL10)

Illustration of the Roof Rails on the Vehicle

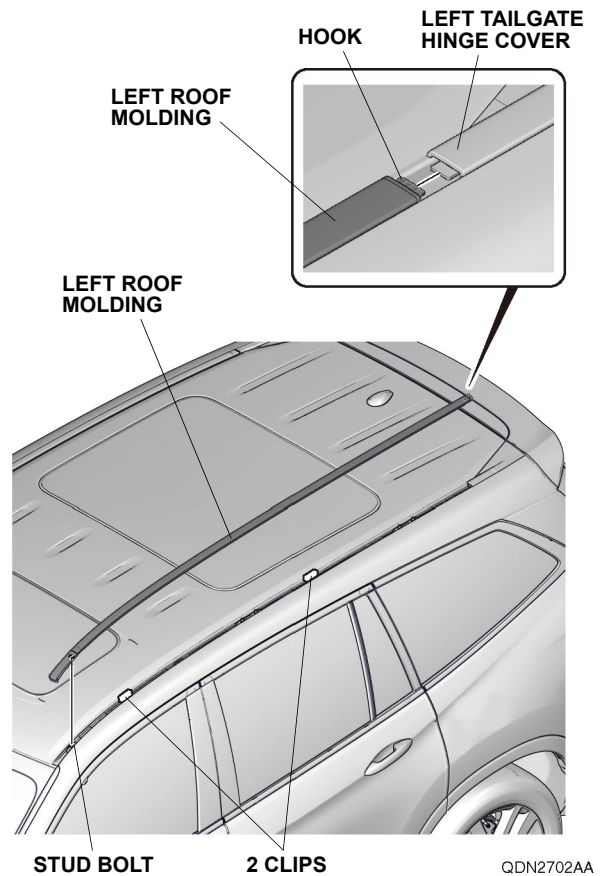


INSTALLATION

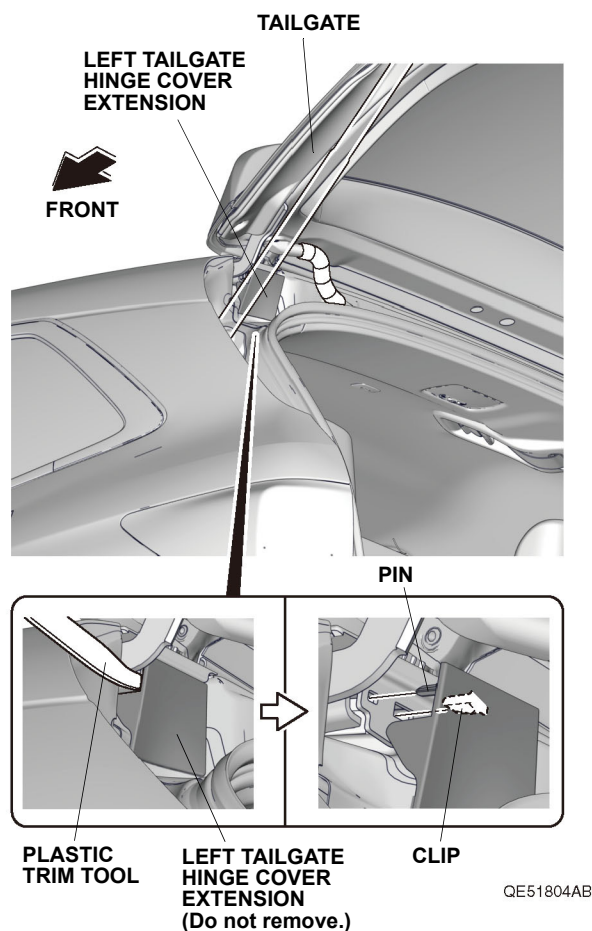
Customer Information: The information in this installation instruction is intended for use only by skilled technicians who have the proper tools, equipment, and training to correctly and safely add equipment to your vehicle. These procedures should not be attempted by "do-it-yourselfers."

NOTE: Be extremely careful not to damage the roof and other finished surfaces of the body when installing the roof rails.

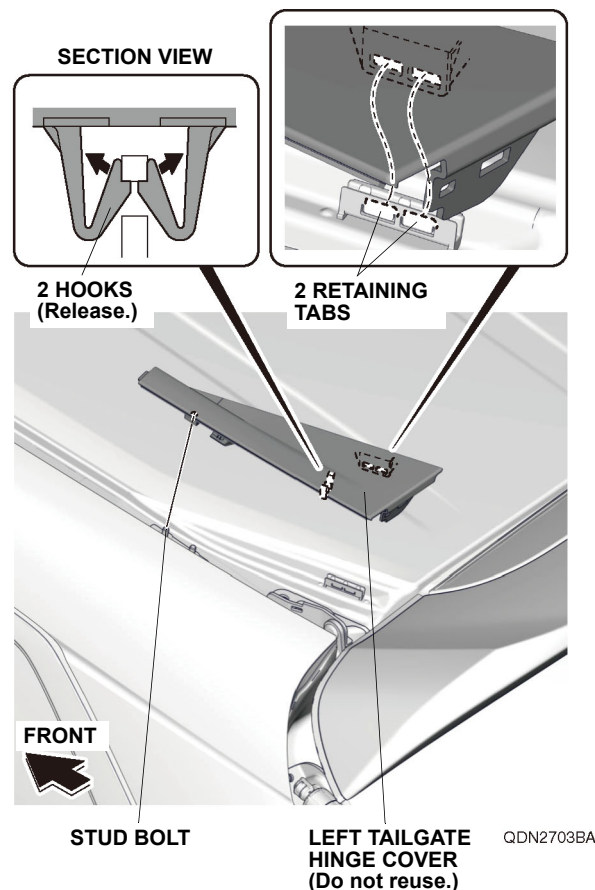
1. Remove the left roof molding (one hook and two clips).



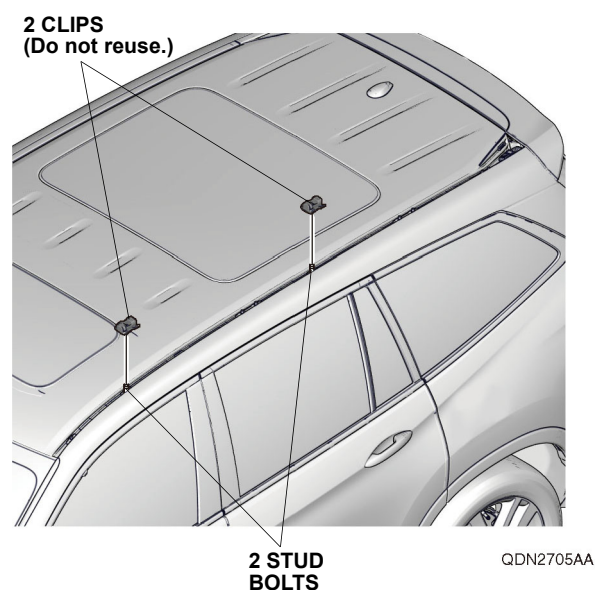
2. Open the tailgate. Using a plastic trim tool, release the left tailgate hinge cover extension (one clip and one pin).
NOTE: Do not remove the tailgate hinge cover extension.



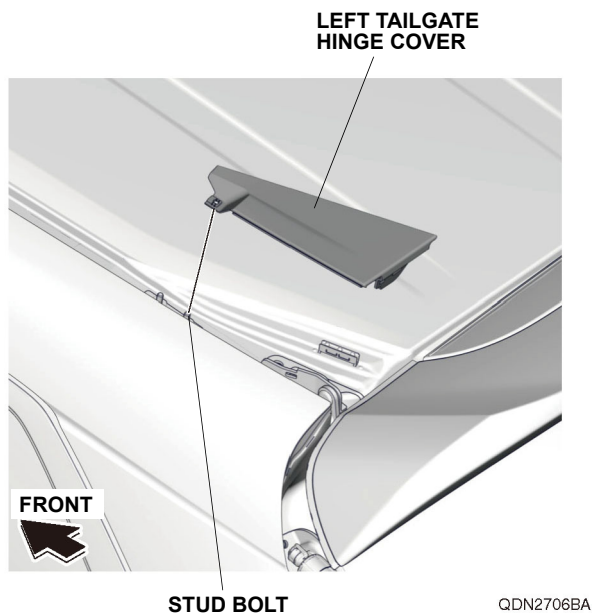
3. Close the tailgate halfway. Gently pry up on the rear edge of the left tailgate hinge cover (two retaining tabs and release the two hooks). Do not reuse the left tailgate hinge cover.



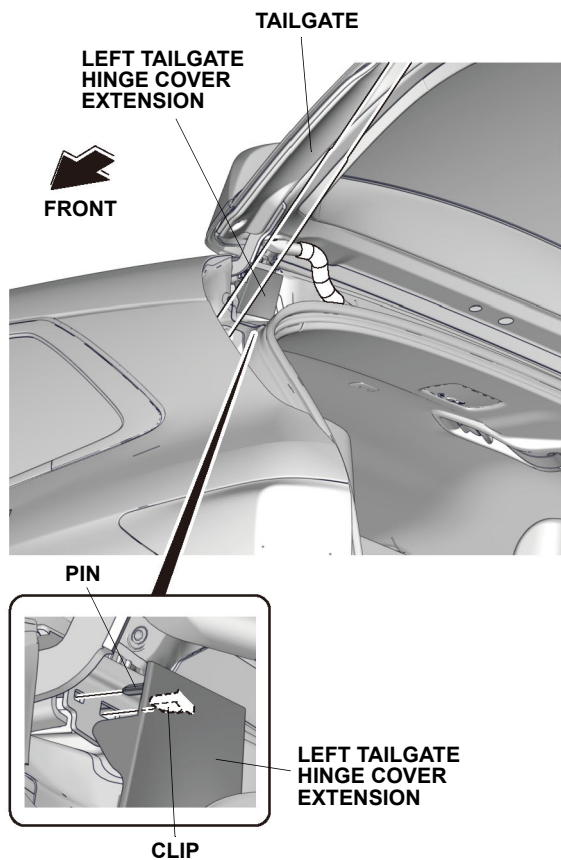
4. Remove the two clips from the two stud bolts on the roof.



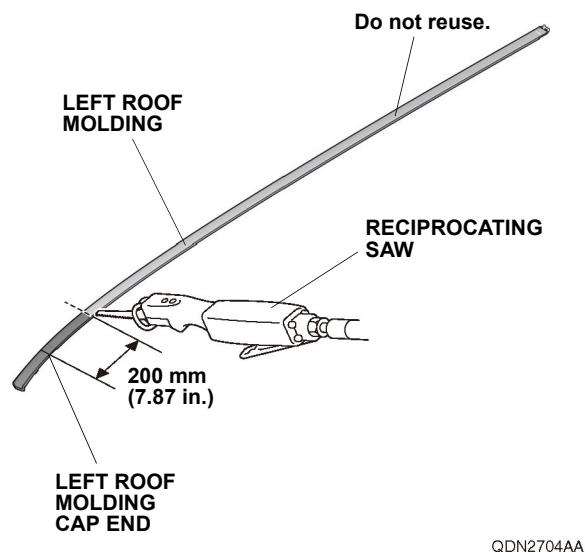
5. Install the left tailgate hinge cover onto the stud bolt.



6. Open the tailgate. Reinstall the left tailgate hinge cover extension to the left tailgate hinge cover with one clip and one pin.



7. While wearing eye protection, use a reciprocating saw to cut the left roof molding at the measurement shown.

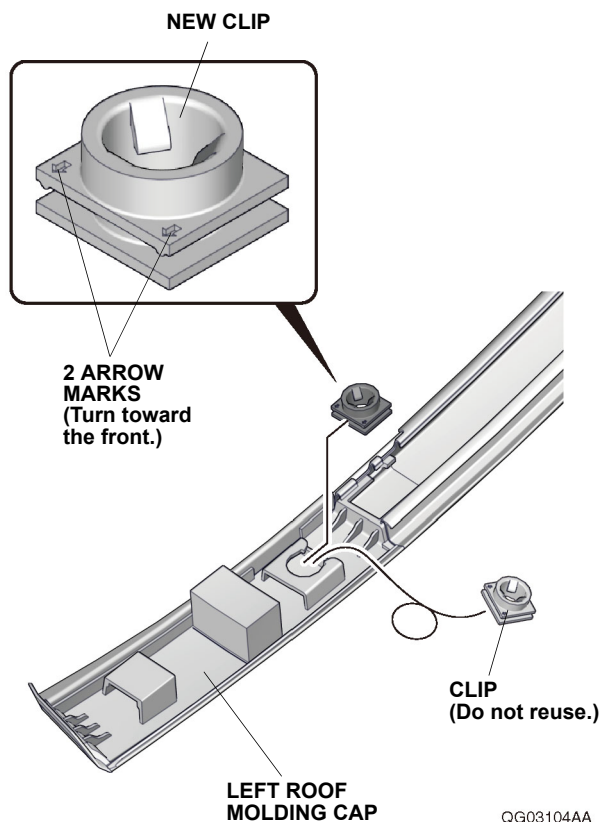


If the vehicle is equipped with the roof molding cap that has a removable clip, continue with step 8; if not, go to step 9.

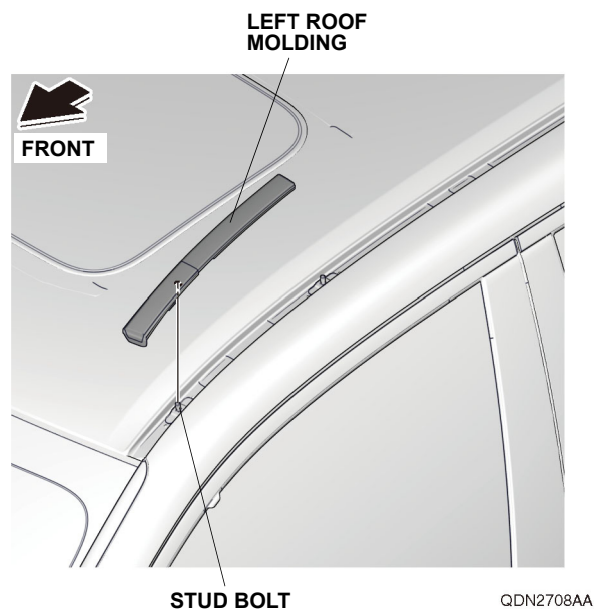
With removable clip

8. Remove the clip and install the new clip into the left roof molding cap as shown.

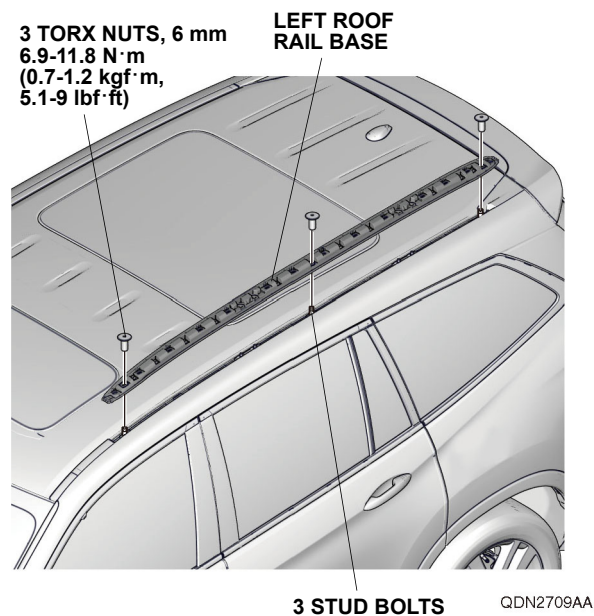
NOTE: Make sure to install the new clip in the correct orientation.



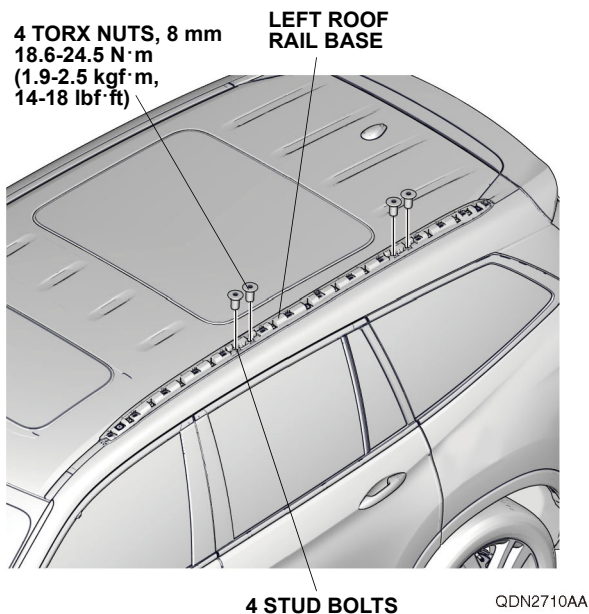
9. Reinstall the left roof molding onto the stud bolt.



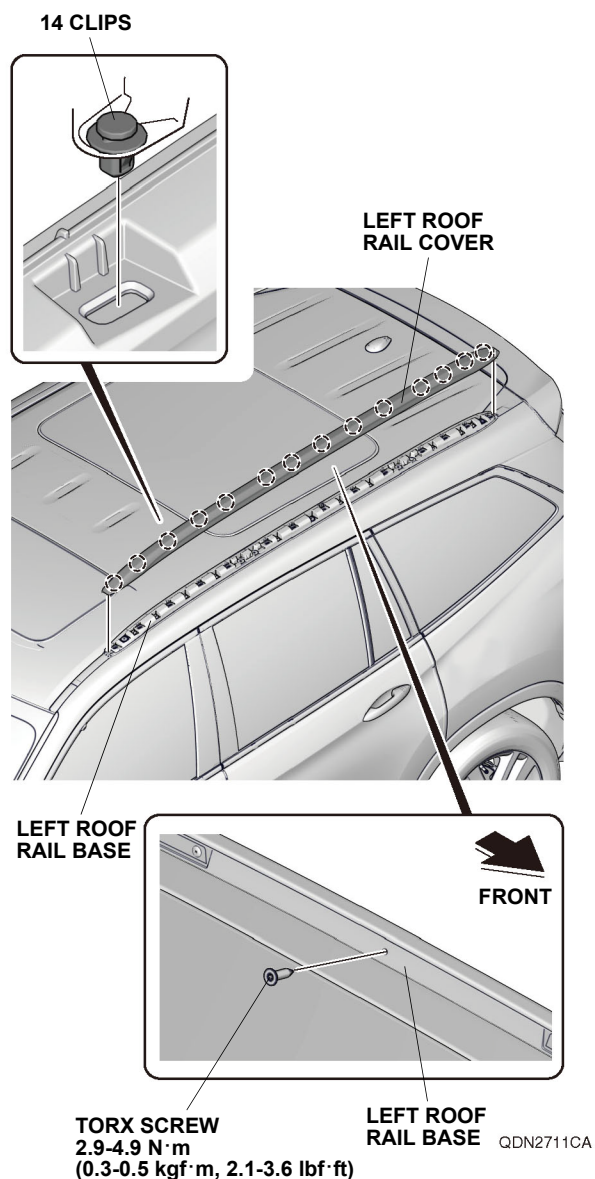
10. Install the left roof rail base to the three stud bolts with three 6 mm TORX nuts. Make sure the roof rail base is installed in the correct position. Torque the 6 mm TORX nuts to 6.9 - 11.8 N·m (0.7 - 1.2 kgf·m, 5.1 - 9 lbf·ft).



11. Secure the left roof rail base to the four stud bolts with four 8 mm TORX nuts.
Torque the 8 mm TORX nuts to 18.6 - 24.5 N·m
(1.9 - 2.5 kgf·m, 14 - 18 lbf·ft).



12. Install the left roof rail cover to the left roof rail base with fourteen clips from the left roof rail cover.



13. Secure the left roof rail cover to the left roof rail base with one TORX screw.
Torque the TORX screw to 2.9 - 4.9 N·m
(0.3 - 0.5 kgf·m, 2.1 - 3.6 lbf·ft).
14. Repeat steps 1 through 13 to install the right roof rail on the right side of the vehicle.