



Accessory Trailer Hitch

When installing the trailer hitch to a Passport with an accessory or factory-equipped hands-free access power tailgate, you must install the hands-free access power tailgate sensor trailer hitch adaptor.

To ensure proper trailer hitch installation with hands-free access, use the chart below to help determine what parts you need.

Description	Part Number	Trim Level and Application		
		EX-L		TOURING/ELITE
		Accessory Hands-Free Access w/o Accessory Trailer Hitch	Accessory Hands-Free Access with Accessory Trailer Hitch	Factory equipped Hands-Free Access with Accessory Trailer Hitch
Hands-Free Access Power Tailgate Sensor (Long Sensor)	08U59-TGS-100	•	•	
Hands-Free Access Power Tailgate Sensor Attachment (Long Sensor)	08U59-TGS-100A	•	•	
Hands-Free Access Power Tailgate Sensor Trailer Hitch Adaptor (Short Sensor)	08L91-TGS-100A		•	•
Trailer Hitch	08L92-TGS-100		•	•

For instructions on how to work the hands-free access system, see the online owner's manual.



HONDA INSTALLATION INSTRUCTIONS

Accessory
TRAILER HITCH

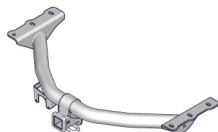
Application
2021 PASSPORT

Publications No.
VERSION 1
Issue Date
SEP 2020

PARTS LIST

Trailer Hitch Kit
P/N 08L92-TGS-100

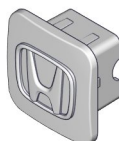
Trailer hitch



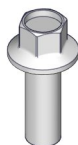
Trailer hitch cover



Receiver cover



6 Flange bolts

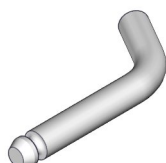


Ball Mount Kit
P/N 08L92-TGS-100A

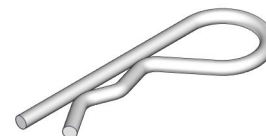
Ball mount



Hitch pin



Hitch pin clip



TOOLS AND SUPPLIES REQUIRED

Shop towel
10 mm Open end wrench
Ratchet
Torque wrench
10 mm and 18 mm Sockets
Phillips screwdriver
File
5 mm Hex wrench

The following tools are available through the Honda Tool and Equipment Program. On the iN, click on Service > Service Bay > Tool and Equipment Program, then enter the number under "Search." Or, call 888-424-6857.

- Trim Tool Set (T/N SOJATP2014)
- Plastic Trim Tool (T/N SILTRIMTL10)
- Air saw (T/N AT192A)

Illustration of the Trailer Hitch on the Vehicle



TRAILER HITCH

QH52301AX

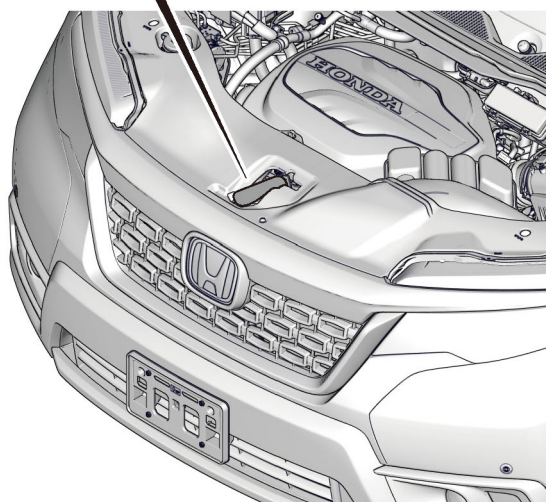
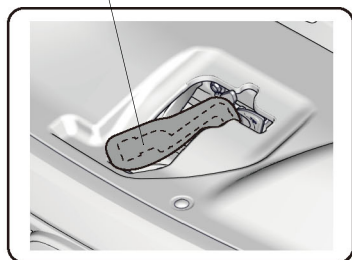
INSTALLATION

Customer Information: The information in this installation instruction is intended for use only by skilled technicians who have the proper tools, equipment, and training to correctly and safely add equipment to your vehicle. These procedures should not be attempted by “do-it-yourselfers.”

NOTE: If you are also installing the trailer hitch harness, install it before you install the trailer hitch.

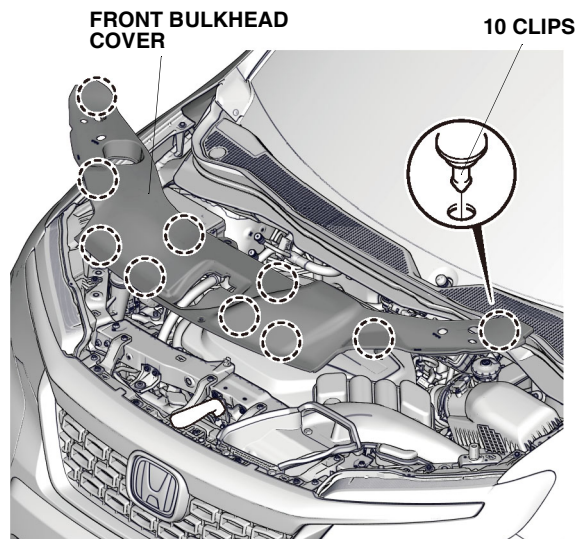
1. Open the tailgate.
2. Disconnect the negative cable from the battery:
 - Wrap a shop towel around the hood latch.

HOOD LATCH
(Wrap with a shop towel.)



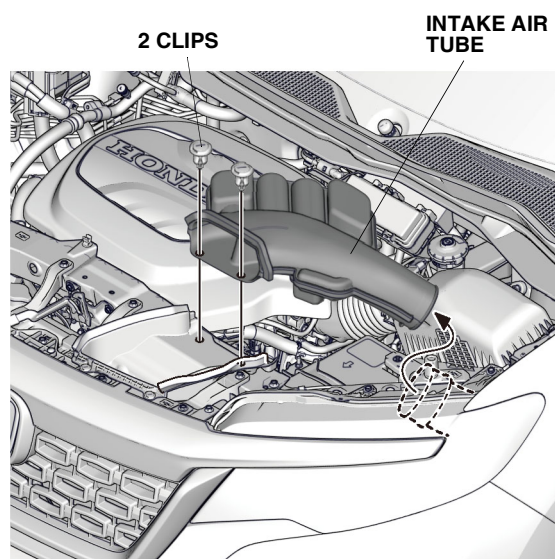
QH50702AB

- Remove the front bulkhead cover.



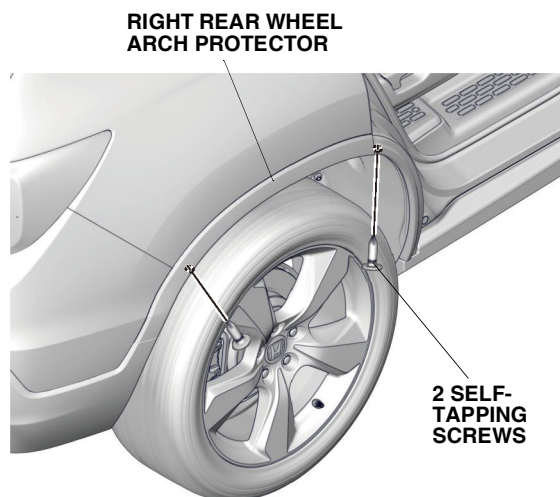
QH50703AB

- Remove the intake air tube.
- Disconnect the negative cable from the battery.



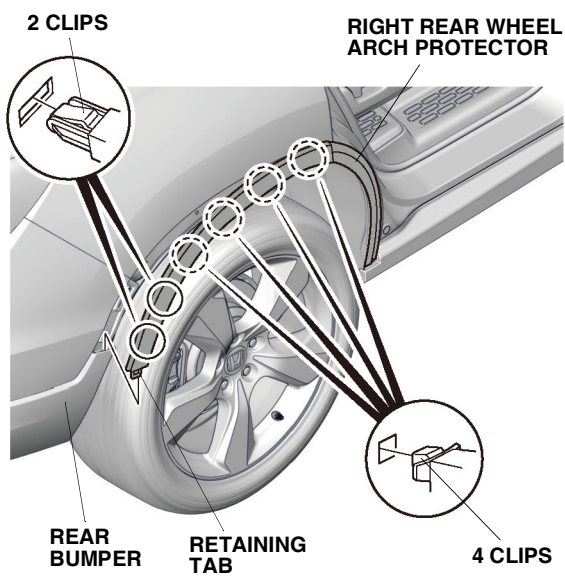
QH50704AB

3. Open the right rear door.



QH51502AC

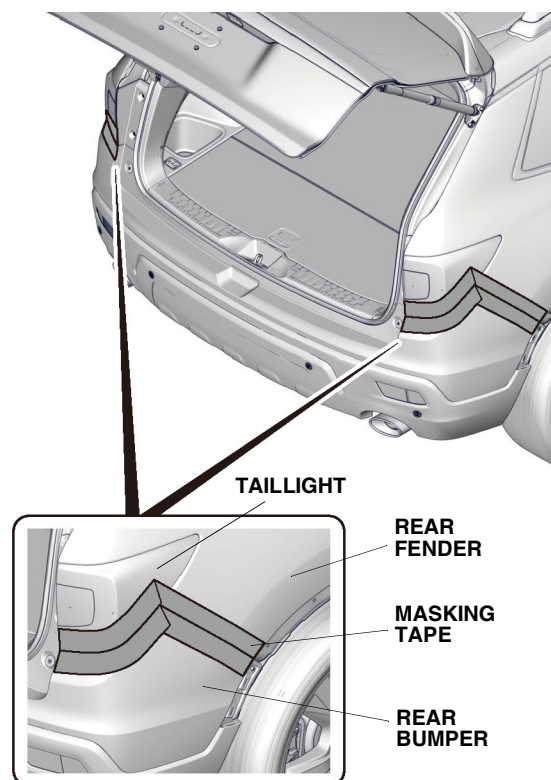
4. Remove the two self-tapping screws.
5. Release the right rear wheel arch protector.



QH51503AC

6. Repeat steps 3 through 5 on the left side of the vehicle.

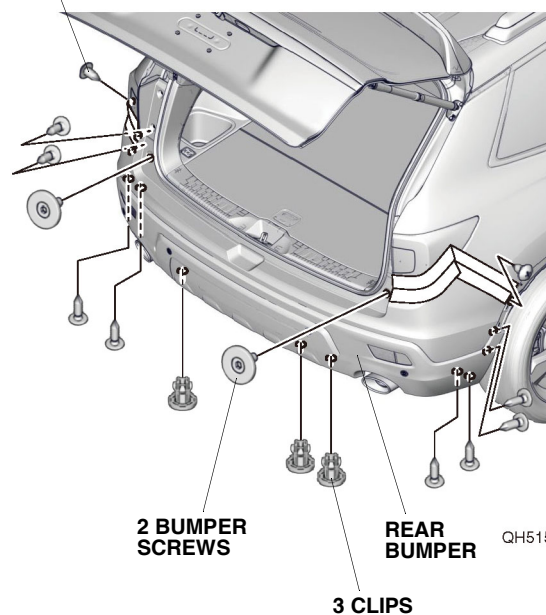
7. Remove the rear bumper:
 - Apply masking tape as shown.



QH51504AC

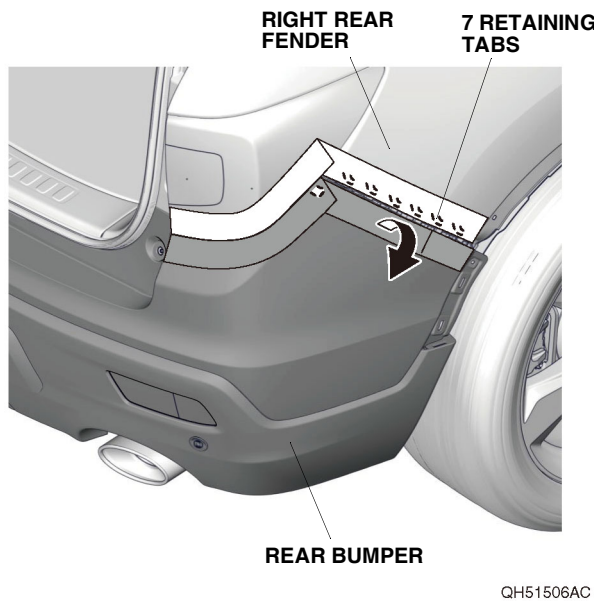
- Remove the two bumper screws, 10 self-tapping screws, and three clips.

10 SELF-TAPPING SCREWS

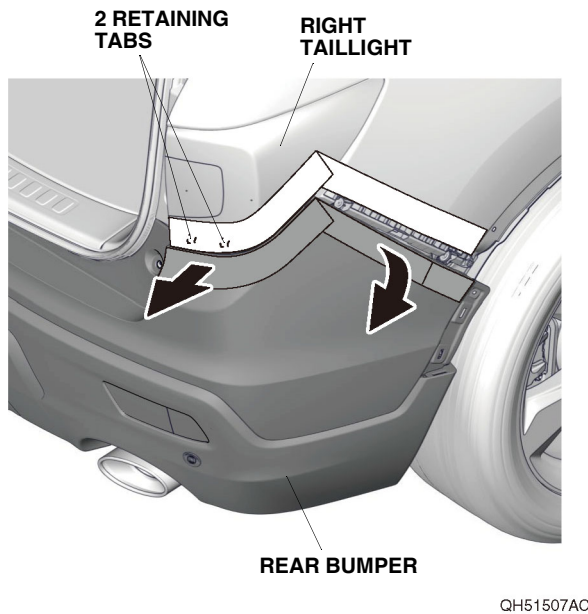


QH51505AC

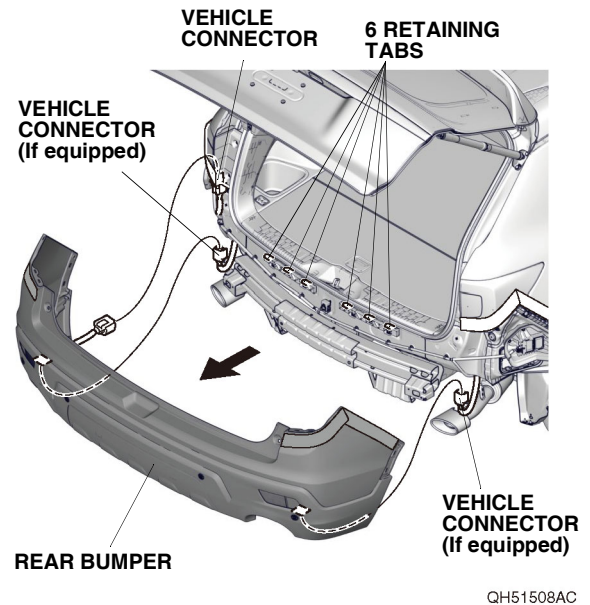
- With the help of an assistant, release the seven retaining tabs along the fenderwell on each side.



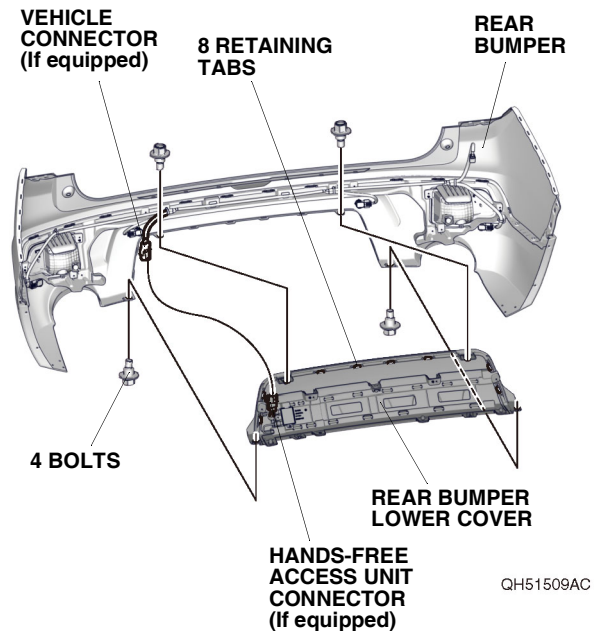
- With the help of an assistant, release the two retaining tabs on each side.



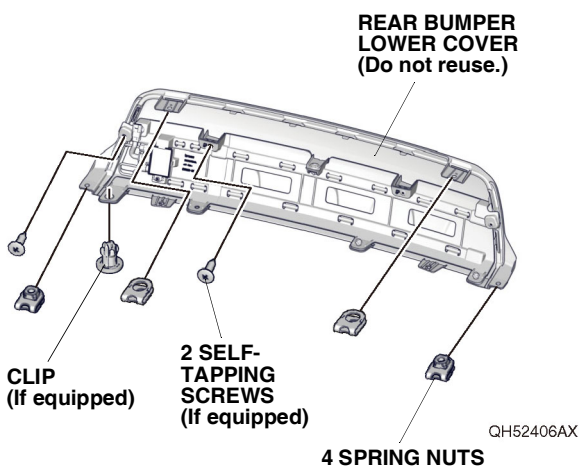
- With the help of an assistant, remove the rear bumper, and unplug the vehicle connectors.
- Place the rear bumper on a blanket.



- Unplug the vehicle connector (if equipped). Then, remove the rear bumper lower cover from the rear bumper.



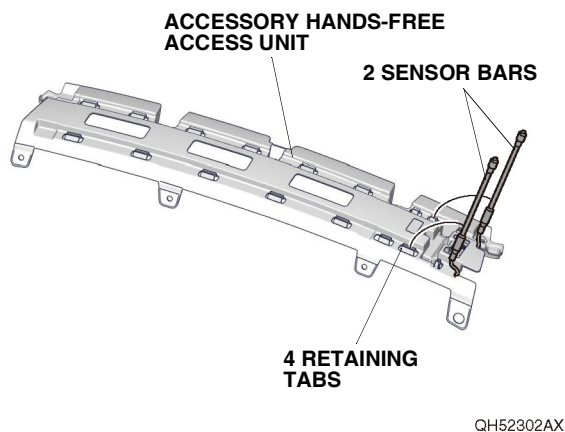
9. Remove the four spring nuts from the rear bumper lower cover. If the vehicle is equipped with the standard hands-free access power tailgate, also remove the two self-tapping screws and one clip as shown.



If you are also installing the Hands-Free Access Power Tailgate Kit, continue with step 10; otherwise, go to step 14.

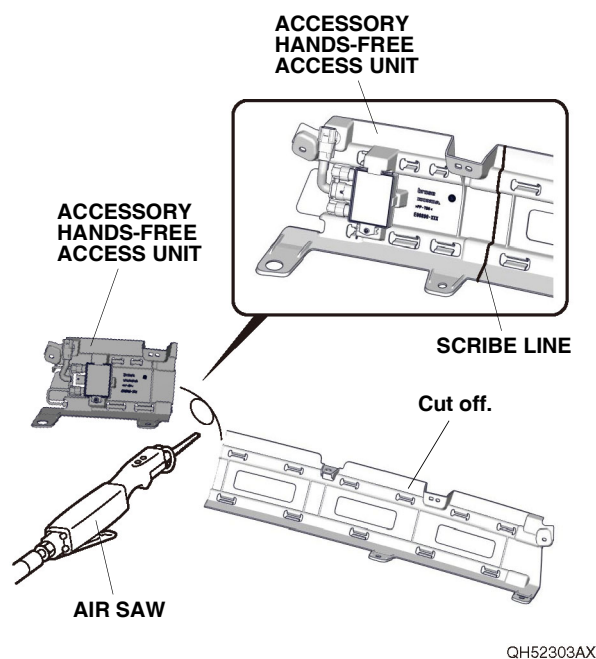
With accessory Hands-Free Access Power Tailgate Kit

10. Release the two sensor bars on the accessory hands-free access unit.

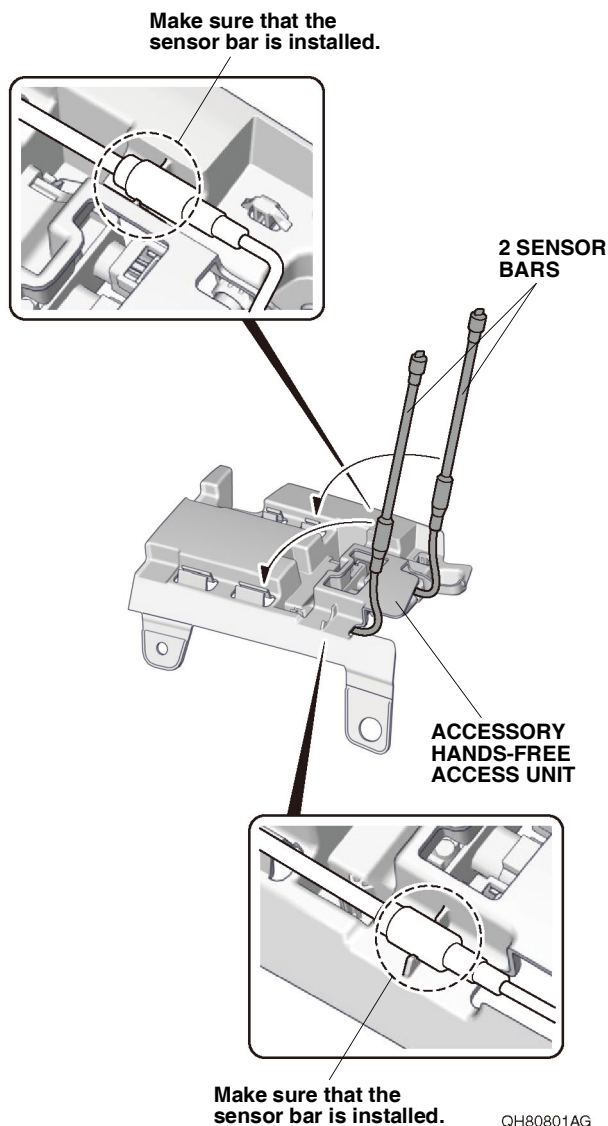


11. While wearing eye protection, use an air saw to cut off the accessory hands-free access unit along the scribe line. Remove any burrs.

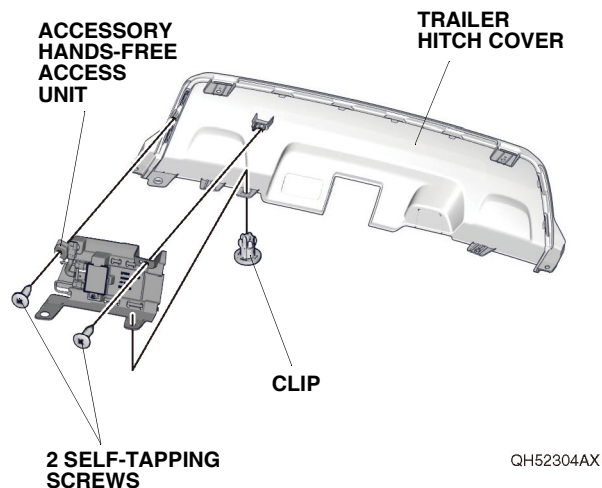
NOTE: Be careful not to cut the sensor bars. If sensor bars are damaged, they must be replaced.



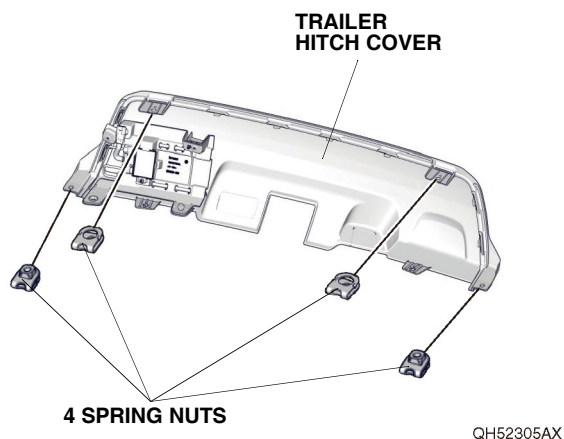
12. Install the two sensor bars to the accessory hands-free access unit. Make sure the sensor bars are positioned properly.



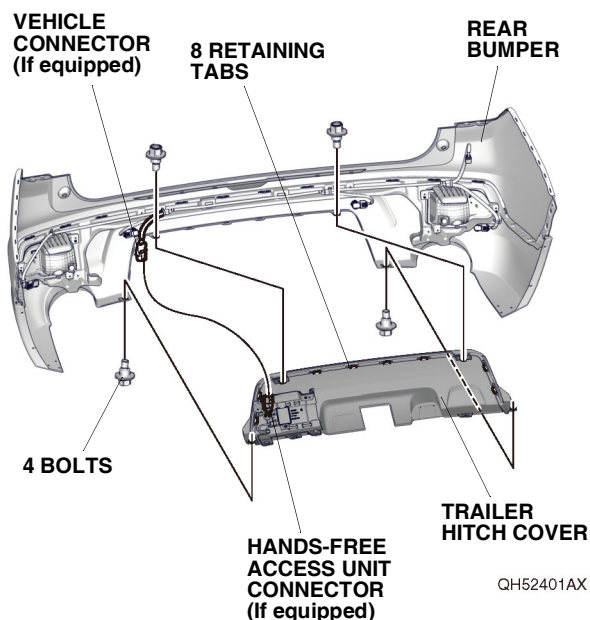
13. Install the accessory hands-free access unit to the trailer hitch cover. If the vehicle is equipped with the standard hands-free access power tailgate, use the two self-tapping screws and one clip removed in step 9; if not, use the two new self-tapping screws and clip in the kit.



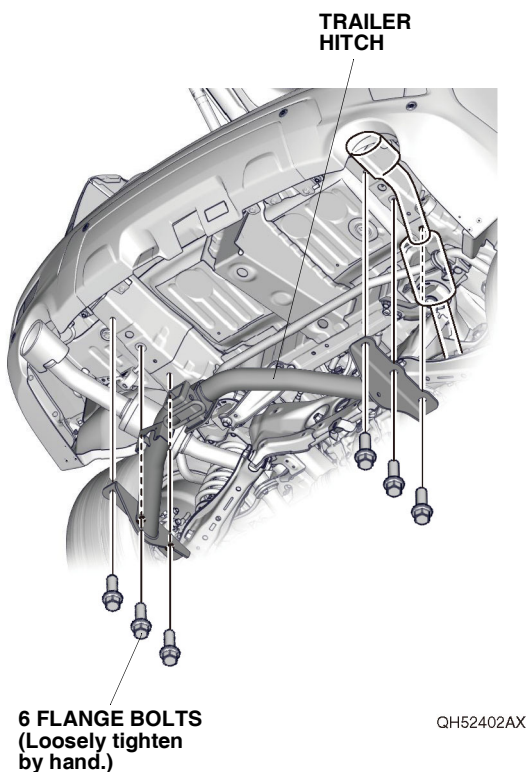
14. Install the four spring nuts removed in step 9 to the trailer hitch cover. NOTE: Make sure to install the spring nuts as shown.



15. Install the trailer hitch cover to the rear bumper with the eight retaining tabs and four bolts removed in step 8. Then, plug the vehicle connector to the hands-free access unit connector (if equipped).

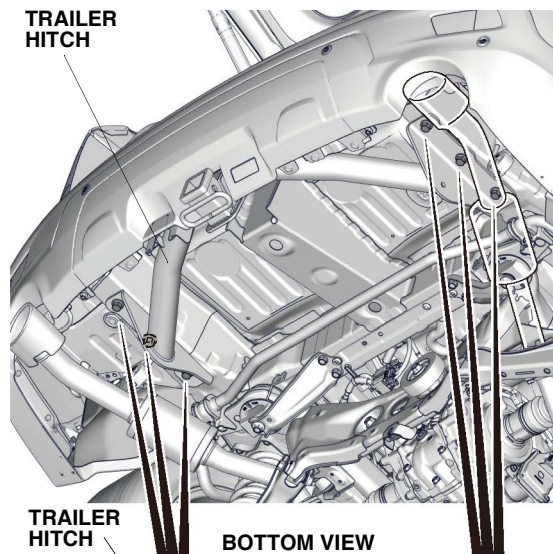


16. With the help of an assistant, install the rear bumper.
17. With the help of an assistant, loosely secure the trailer hitch to the vehicle with the six flange bolts.



18. Tighten the six flange bolts to an initial torque of 32 lb-ft (43 N·m) in the order shown. Then, tighten the bolts to a final torque of 63 lb-ft (85 N·m) in the same order.

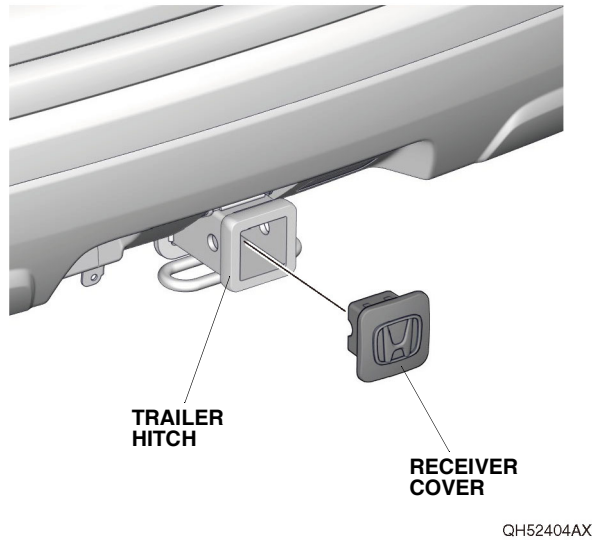
NOTE: After tightening all the bolts, torque the bolts again in the same order.



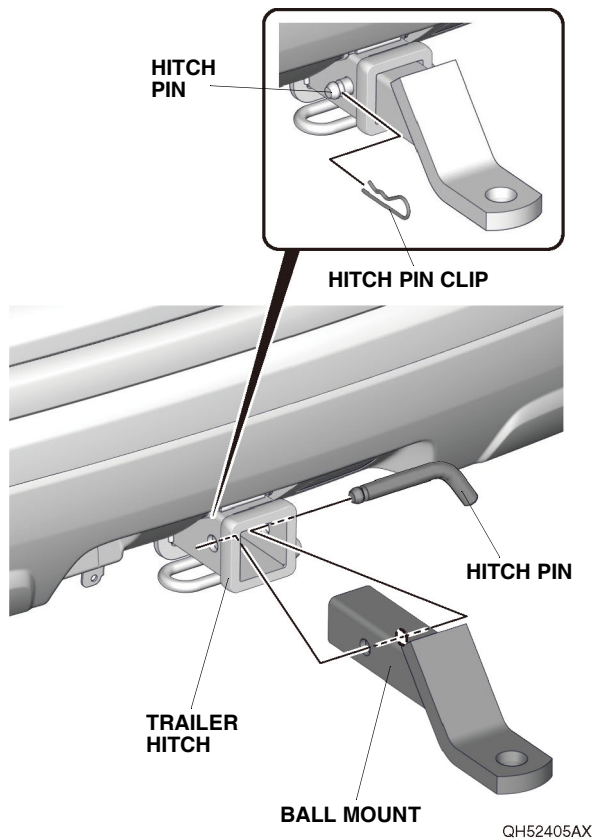
19. Check that all wire harnesses are routed properly and all connectors are plugged in.
20. Install all removed parts except for the front bulkhead cover and the intake air tube.
21. Connect the negative cable to the battery.
22. Install the front bulkhead cover and the intake air tube.
23. Press and hold the audio unit power button for 2 seconds to restore the audio and navi (if equipped) system functions.
24. Set the clock on vehicles without navigation.
25. If necessary, restore the systems back to normal operation as described in the service information.

Put a copy of this page in the glove box for your customer.

Whenever you remove the hitch pin clip, the hitch pin, and the ball mount, store them securely in the cargo area. Install the receiver cover into the opening at the end of the trailer hitch. When you install the ball mount, store the receiver cover in the cargo area.



Install the ball mount into the trailer hitch using a hitch pin clip and hitch pin.



After the first 600 miles (1,000 km) of towing, have your Honda Dealer check the tightness of the trailer hitch bolts.