



HONDA INSTALLATION INSTRUCTIONS

Accessory
AUTOMATIC DAY/NIGHT
MIRROR

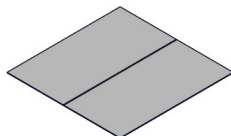
Application
2021 PASSPORT

Publications No.
VERSION 1
Issue Date
SEP 2020

PARTS LIST

Attachment Kit
P/N 08V03-THR-100

Aluminum tape



Automatic Day/Night Mirror Kit
P/N 08V03-THR-100A

Automatic Day/Night mirror



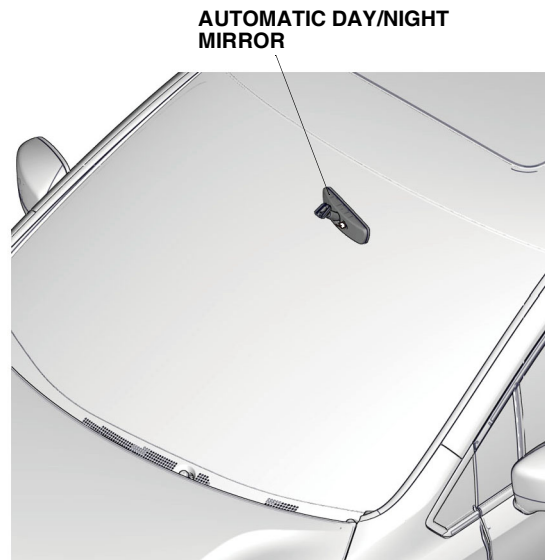
TOOLS AND SUPPLIES REQUIRED

Phillips screwdriver
10 mm Open end wrench
T-20 TORX bit
Ratchet
Small flat-tip screwdriver
Isopropyl alcohol
Shop towel
Scissors
Masking tape
Ruler

The following tools are available through the Honda Tool and Equipment Program. On the iN, click on Service > Service Bay > Tool and Equipment Program, then enter the number under "Search." Or, call 888-424-6857.

- Trim Tool Set (T/N SOJATP2014)
- Plastic Trim Tool (T/N SILTRIMTL10)

Illustration of the Automatic Day/Night Mirror on the Vehicle



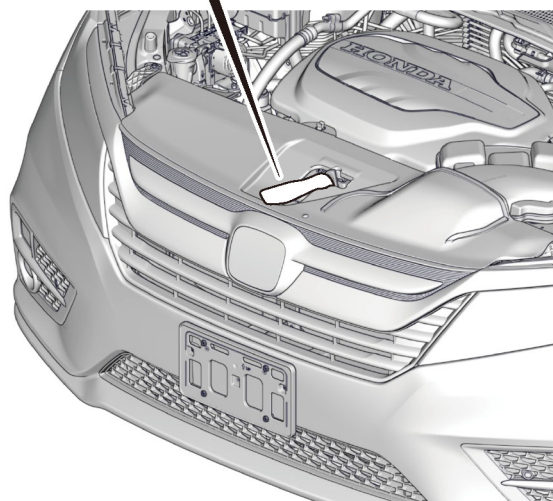
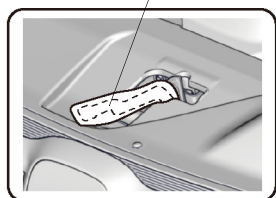
QF52401AA

INSTALLATION

Customer Information: The information in this installation instruction is intended for use only by skilled technicians who have the proper tools, equipment, and training to correctly and safely add equipment to your vehicle. These procedures should not be attempted by “do-it-yourselfers.”

1. Disconnect the negative cable from the battery:
 - Wrap a shop towel around the hood latch.

HOOD LATCH
(Wrap with a shop towel.)

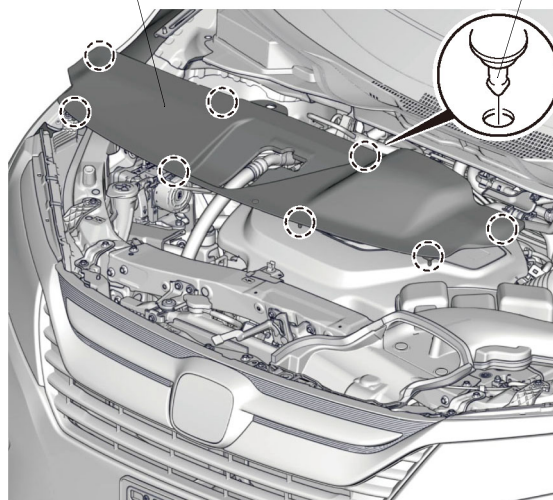


QF52702AG

- Remove the front bulkhead cover.

FRONT BULKHEAD COVER

8 CLIPS

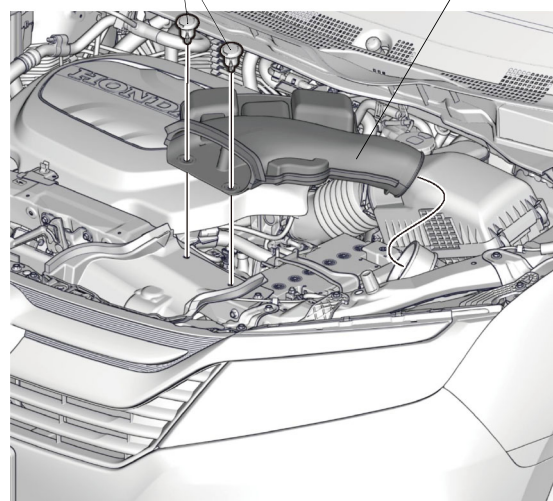


QF52703AG

- Remove the intake air tube.
- Disconnect the negative cable from the battery.

2 CLIPS

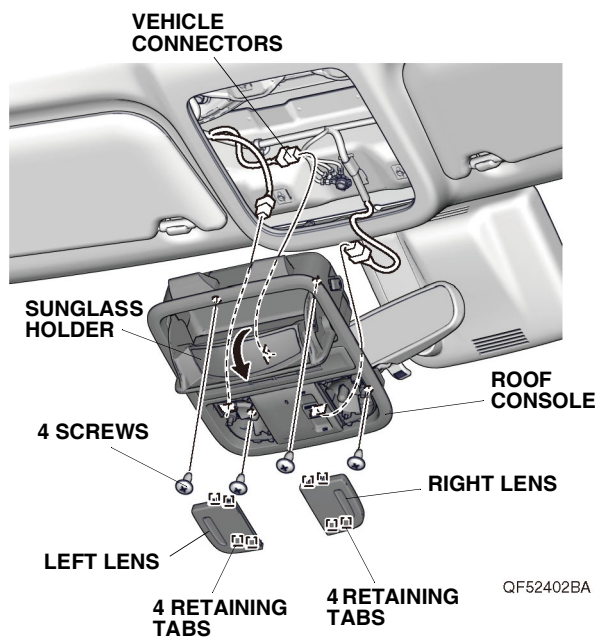
INTAKE AIR TUBE



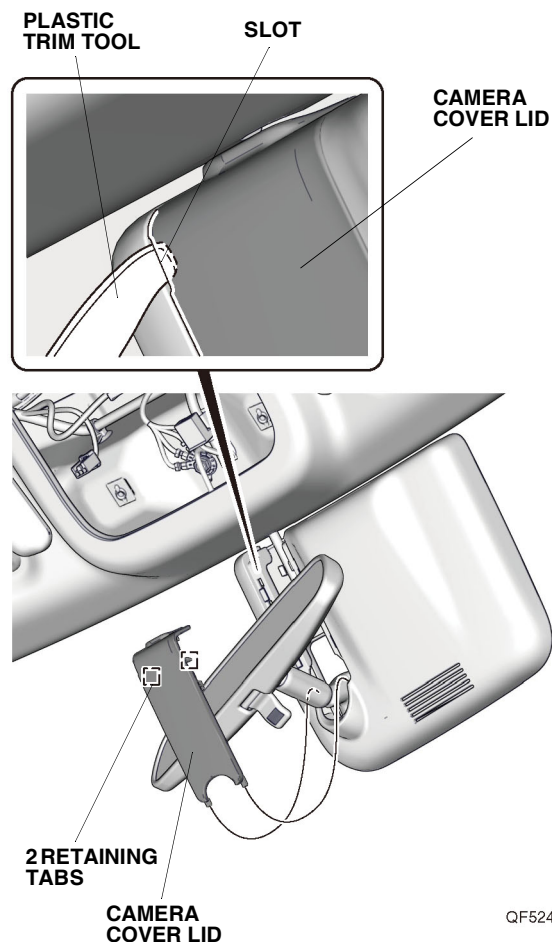
QF52704AG

2. Remove the roof console:

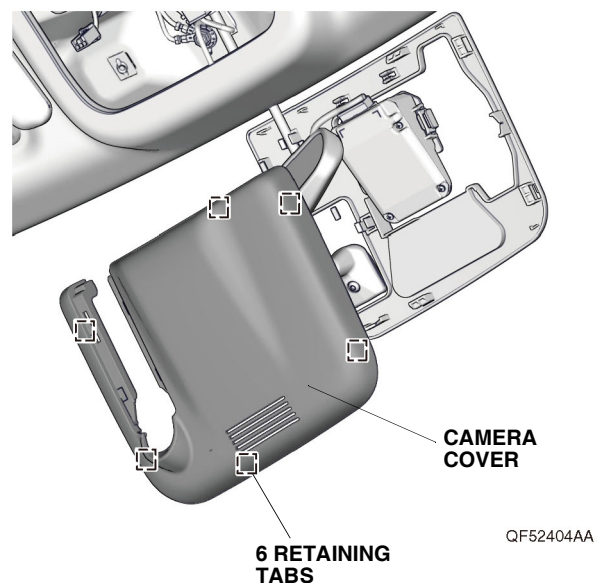
- Using a small flat-tip screwdriver wrapped with a shop towel, pry out and remove the left and right lenses.
- Open the sunglass holder and remove the four screws.
- Remove the roof console and unplug the vehicle connectors.



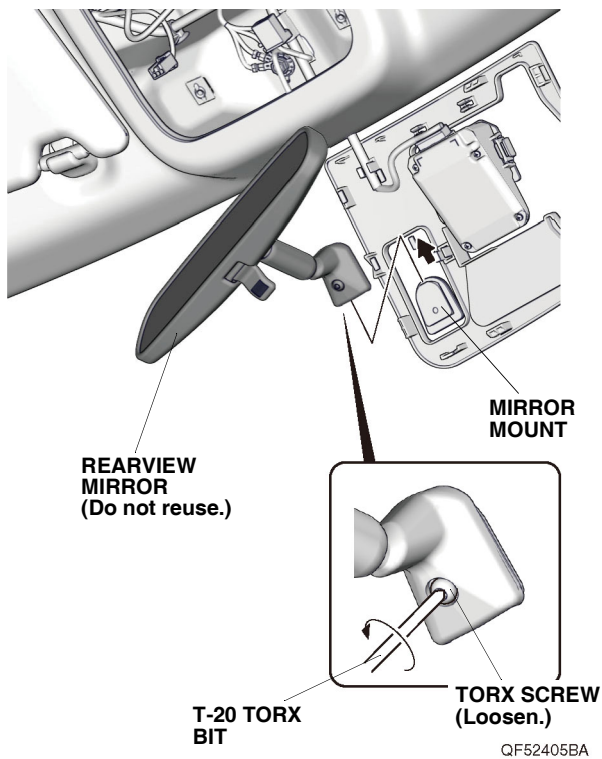
3. Using a plastic trim tool, remove the camera cover lid.



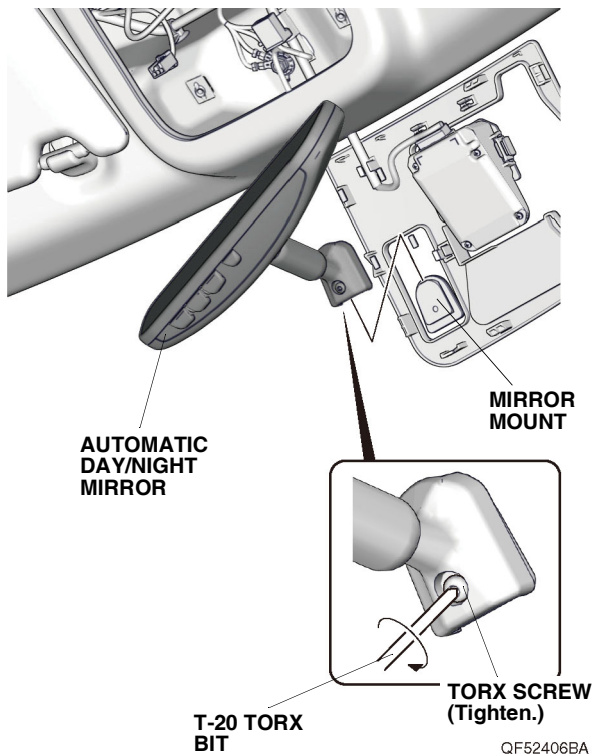
4. Remove the camera cover.



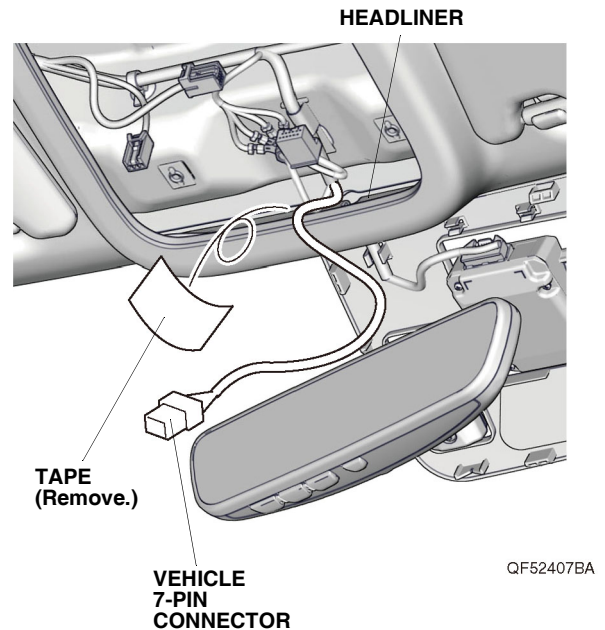
- Loosen the TORX screw, and remove the rearview mirror.



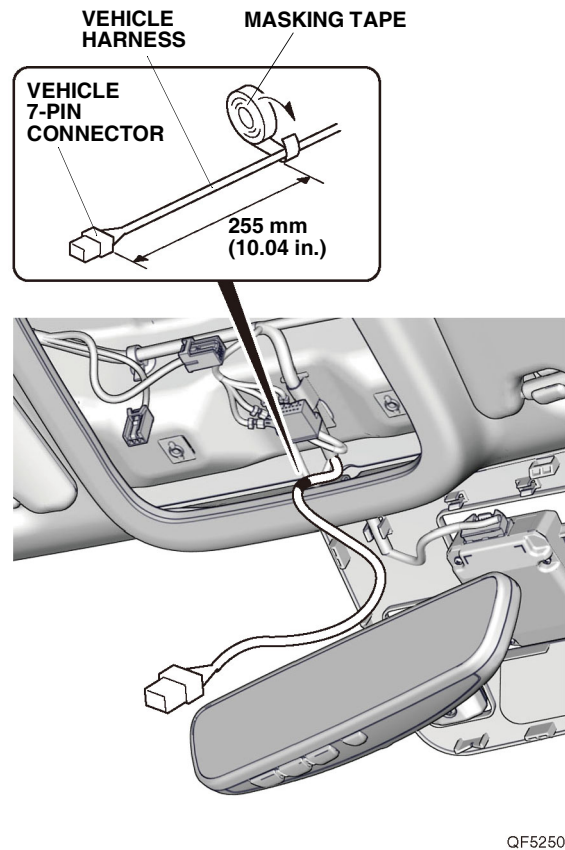
- Install the automatic day/night mirror on the mirror mount as shown, and tighten the TORX screw.



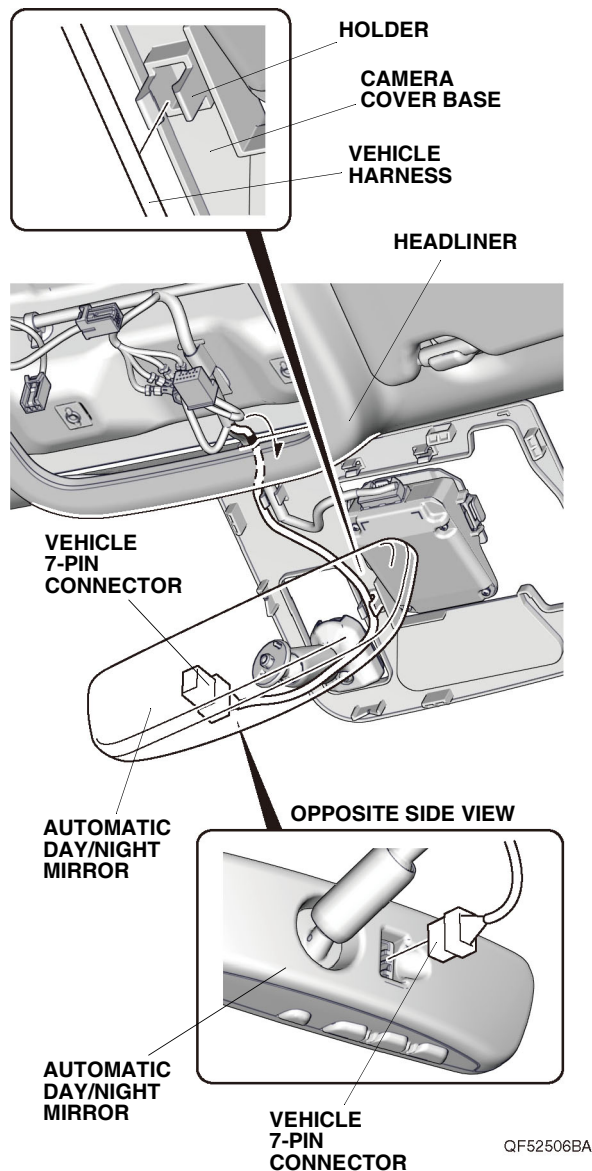
- Remove the tape to free the vehicle 7-pin connector.



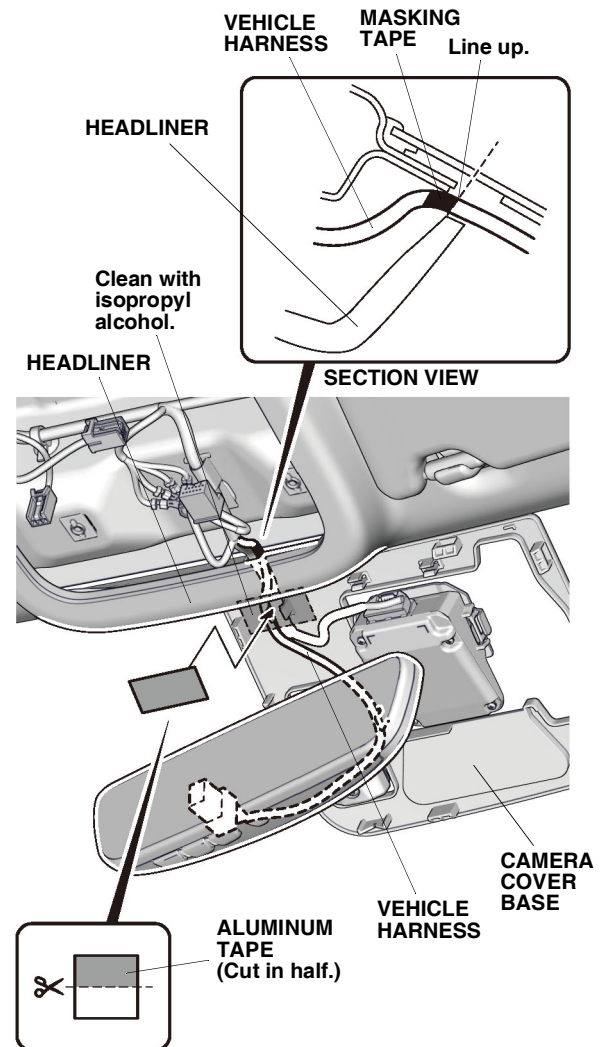
- Attach masking tape to the vehicle harness at the measurement shown.



9. Route the vehicle harness as shown. Be careful not to crease the headliner. Secure the vehicle harness to the holder on the camera cover base, and plug the vehicle 7-pin connector into the automatic day/night mirror.

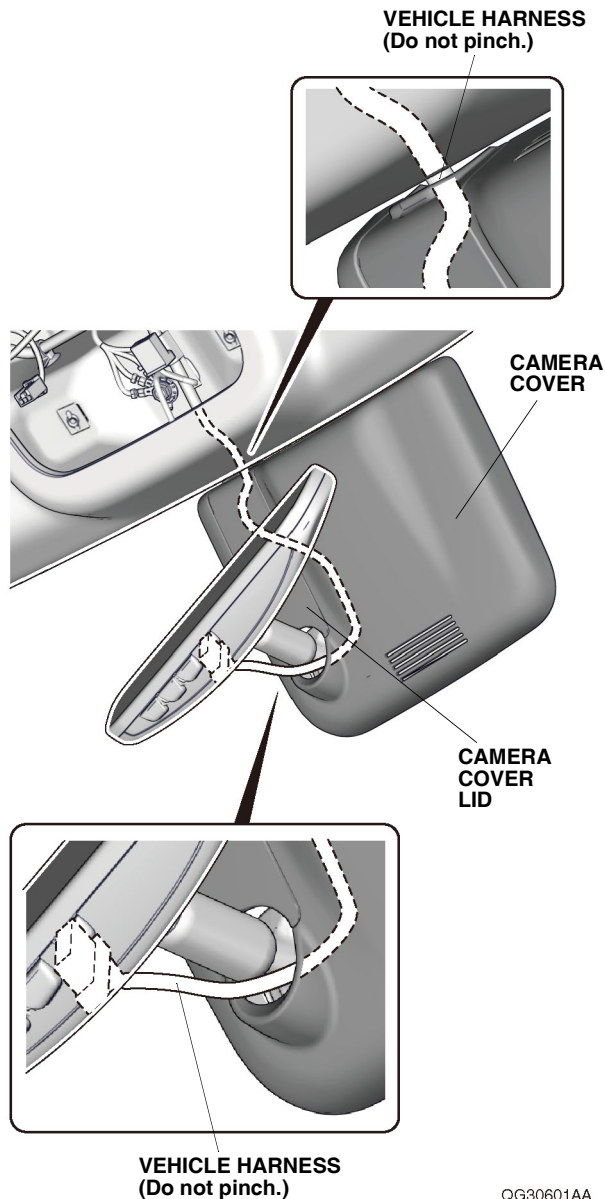


10. Using isopropyl alcohol on a shop towel, thoroughly clean the camera cover base where the aluminum tape will attach.



11. Using scissors, cut one aluminum tape in half. Line up the masking tape on the vehicle harness with the edge of the headliner, and secure the vehicle harness to the camera cover base with one half of aluminum tape.

12. Install the camera cover and camera cover lid.
NOTE: Make sure that the vehicle harness are not pinched.



13. Check that all wire harnesses are routed properly and all connectors are plugged in.
14. Install all removed parts except for the front bulkhead cover and the intake air tube.
15. Connect the negative cable to the battery.
16. Install the front bulkhead cover and the intake air tube.
17. Press and hold the audio unit power button for 2 seconds to restore the audio and navi (if equipped) system functions.
18. Set the clock on vehicles without navigation.
19. If necessary, restore the systems back to normal operation as described in the service information.

Check the Operation of the Automatic Day/Night Mirror

20. Check that the automatic day/night mirror work properly as described in the owner's manual of the vehicle.