



HONDA INSTALLATION INSTRUCTIONS

Accessory
BACKUP SENSORS

Application
2021 PASSPORT

Publications No.
VERSION 1
Issue Date
SEP 2020

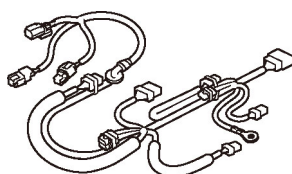
PARTS LIST

Backup Sensors Attachment Kit
P/N 08V67-TGS-100B

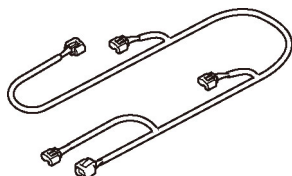
Control unit bracket



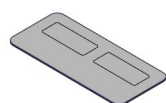
Backup sensor harness



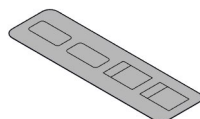
Subharness



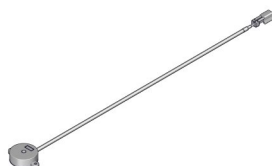
Fuse label A



Fuse label B



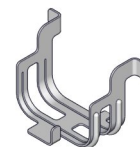
Buzzer



Switch



Switch bracket



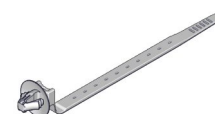
Narrow wire tie



10 Wire ties



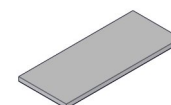
5 Wire ties with clip A



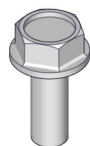
Wire tie with clip B



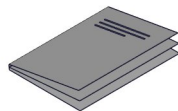
Urethane tape



Flange bolt

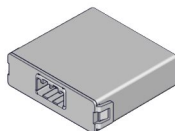


Accessory user's information manual

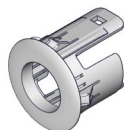


**Backup Sensors Kit
P/N 08V67-TGS-100J**

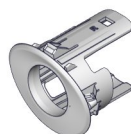
Control unit



2 Center retainers



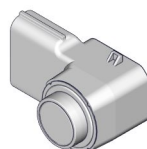
Right retainer
(Identification mark: R)



Left retainer
(Identification mark: L)



4 Sensors



TOOLS AND SUPPLIES REQUIRED

Phillips screwdriver

Ruler

Scissors

10 mm Open end wrench

10 mm and 12 mm Sockets

Pushpin

Ratchet

3 mm Drill bit

Eye protection (face shield, safety goggles, etc.)

File

5 mm Hex wrench

Blanket

Isopropyl alcohol

Shop towel

25 mm, 26 mm, and 27 mm Hole saws

Drill

Masking tape

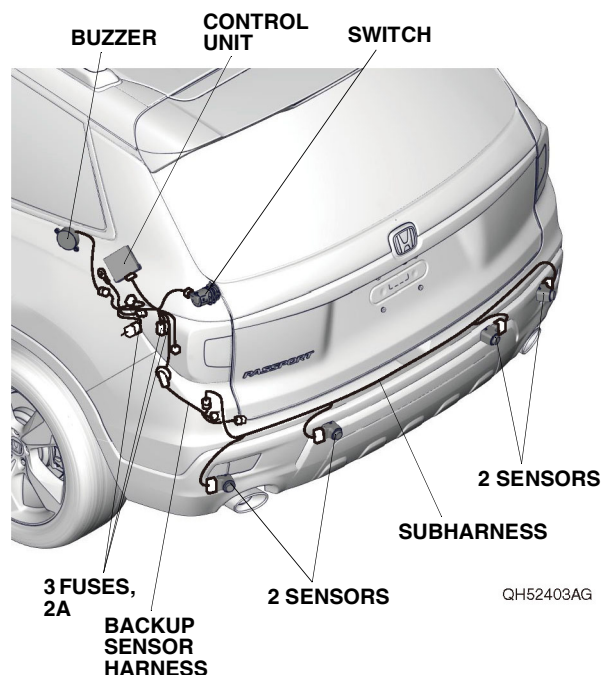
Diagonal cutters

Utility knife

The following tools are available through the Honda Tool and Equipment Program. On the iN, click on Service > Service Bay > Tool and Equipment Program, then enter the number under "Search." Or, call 888-424-6857.

- Trim Tool Set (T/N SOJATP2014)
- Plastic Trim Tool (T/N SILTRIMTL10)

Illustration of the Backup Sensors on the Vehicle



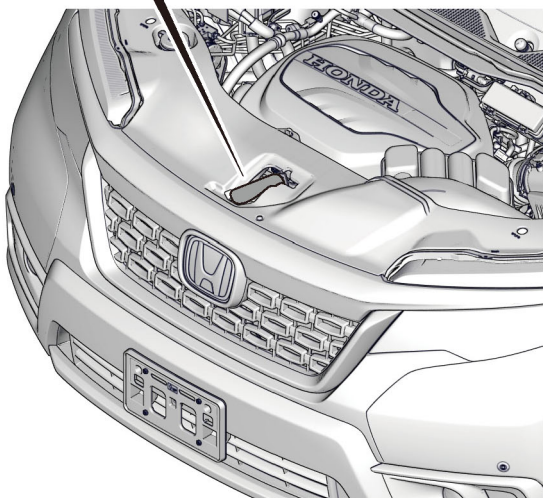
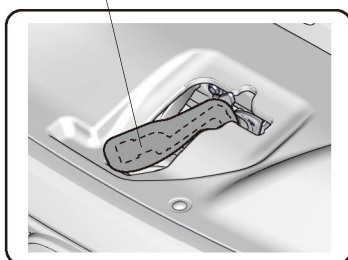
INSTALLATION

Customer Information: The information in this installation instruction is intended for use only by skilled technicians who have the proper tools, equipment, and training to correctly and safely add equipment to your vehicle. These procedures should not be attempted by “do-it-yourselfers.”

NOTE:

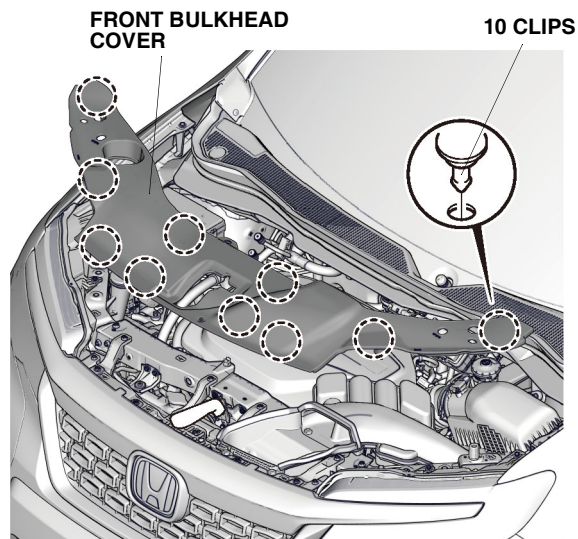
- If you are also installing the rear welcome lights or hands-free access power tailgate, install them after you install the backup sensors.
 - Refer to Parts Information Bulletin (PIB) for the proper color sensors.
1. Open the tailgate.
 2. Disconnect the negative cable from the battery:
 - Wrap a shop towel around the hood latch.

HOOD LATCH
(Wrap with a shop towel.)



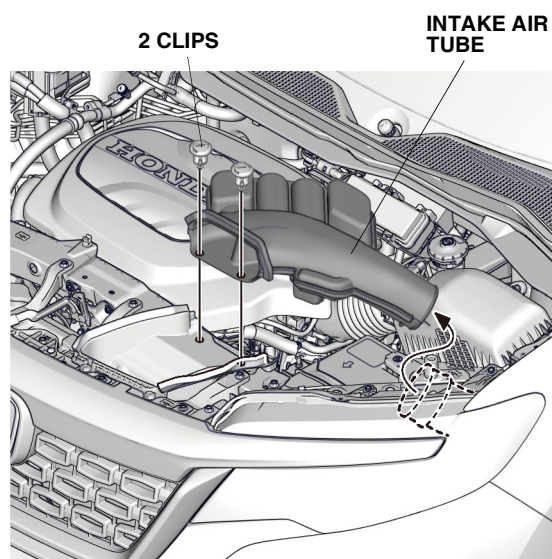
QH50702AB

- Remove the front bulkhead cover.



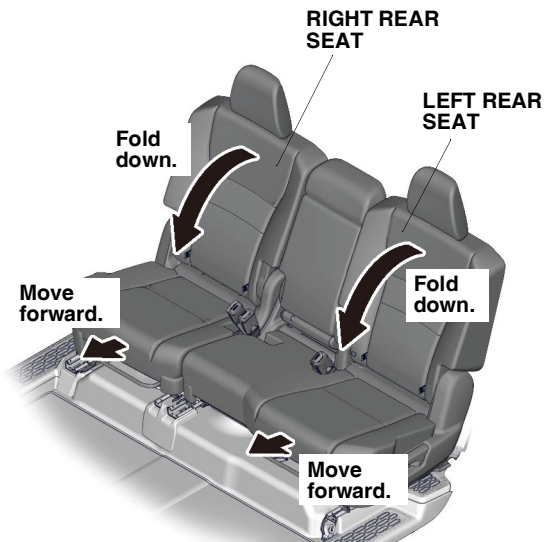
QH50703AB

- Remove the intake air tube.
- Disconnect the negative cable from the battery.



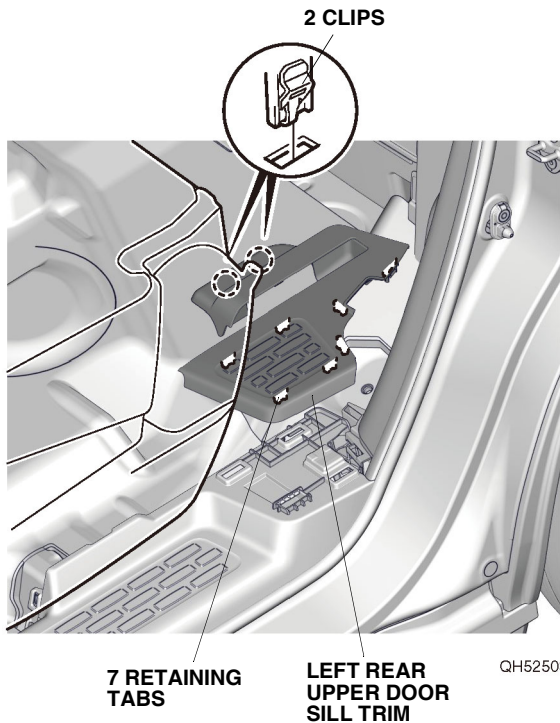
QH50704AB

3. Fold down the left and right rear seats, and move them forward.



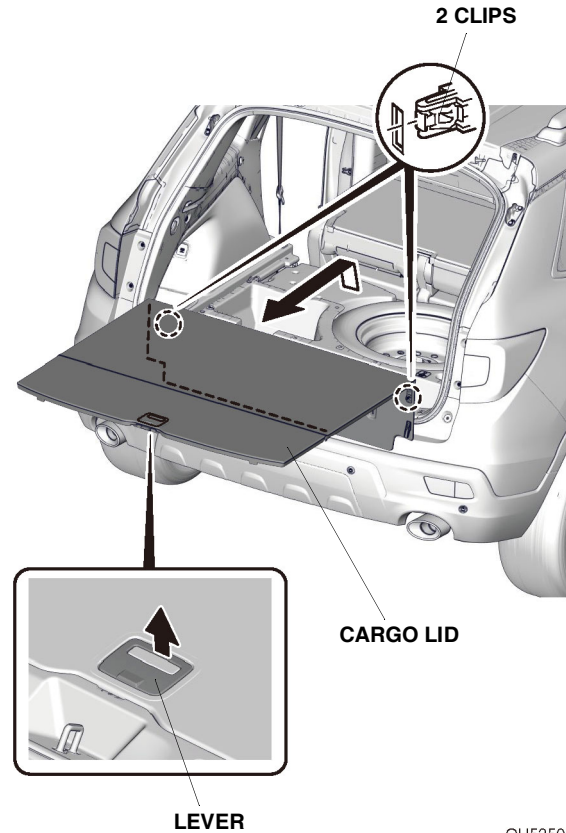
QH52502AX

4. Remove the left rear upper door sill trim.



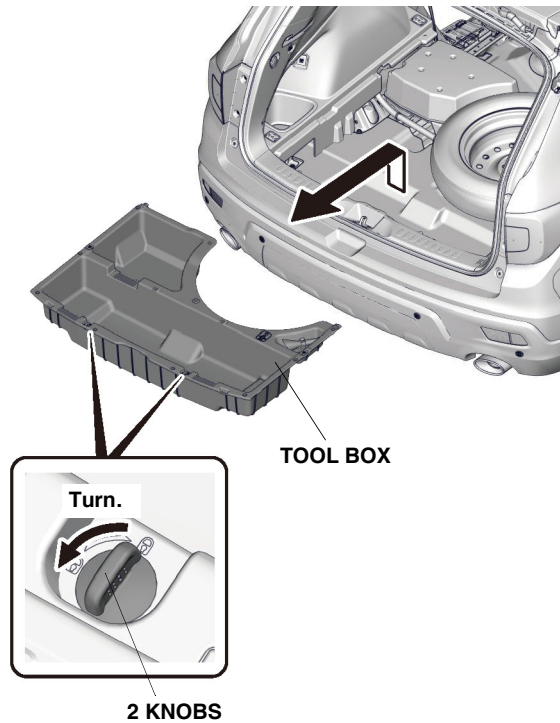
QH52503AX

5. Remove the cargo lid.

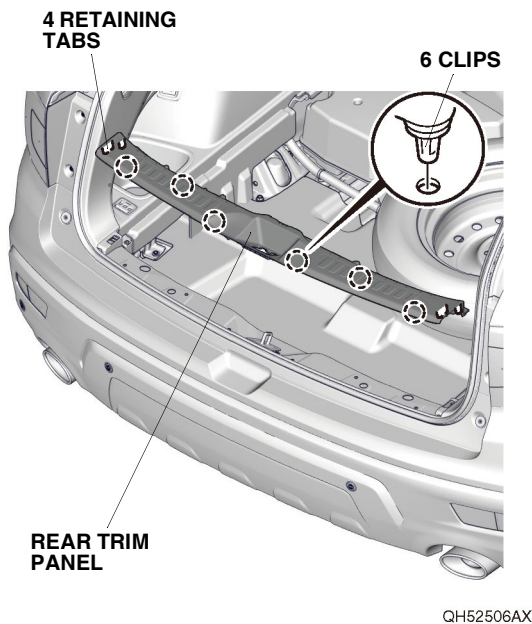


QH52504AX

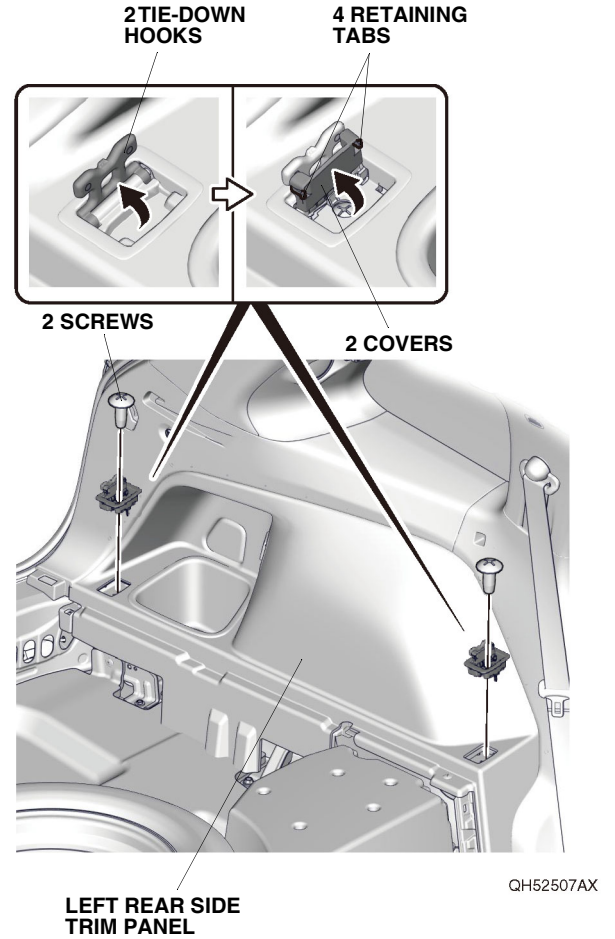
6. Remove the tool box.



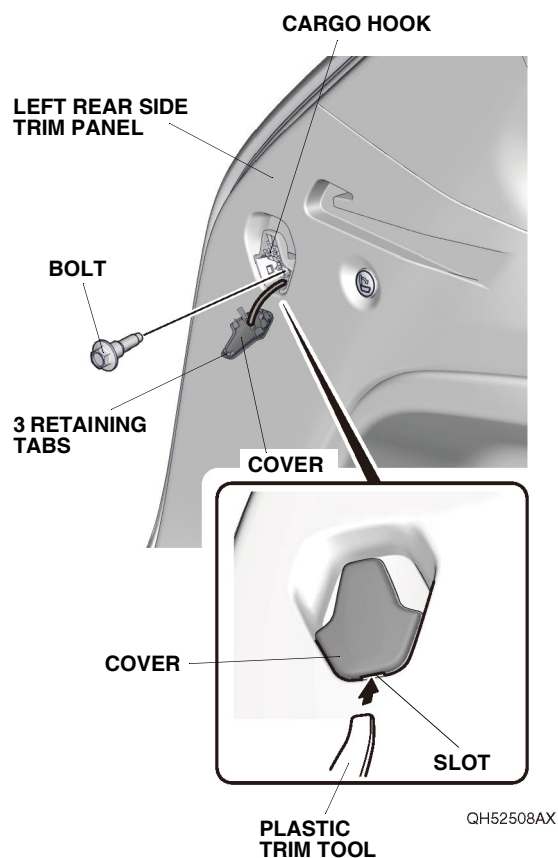
7. Remove the rear trim panel.



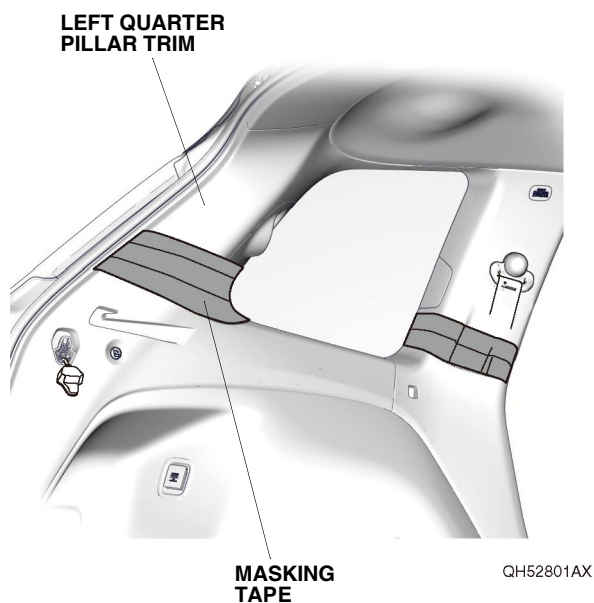
8. Remove the two tie-down hooks.



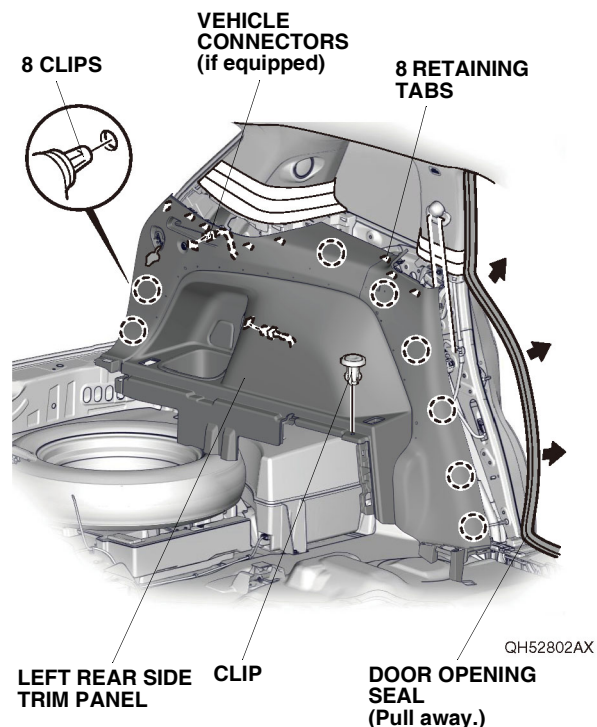
9. Using a plastic trim tool, pull the cover, and remove the cargo hook.



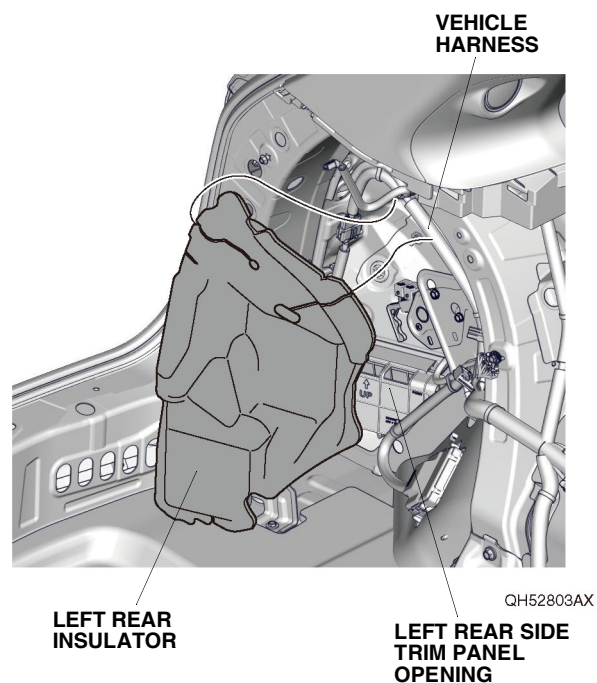
10. Apply masking tape to the left quarter pillar trim as shown.



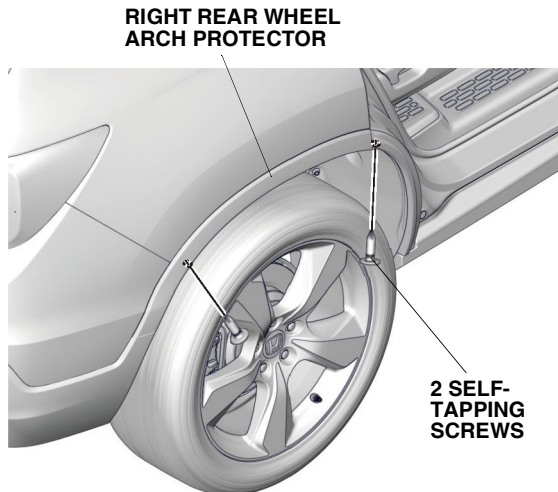
11. Pull away the door opening seal from around the left rear side trim panel. Remove the left rear side trim panel, and unplug the vehicle connectors (if equipped).



12. Release the vehicle harness to remove the left rear insulator.

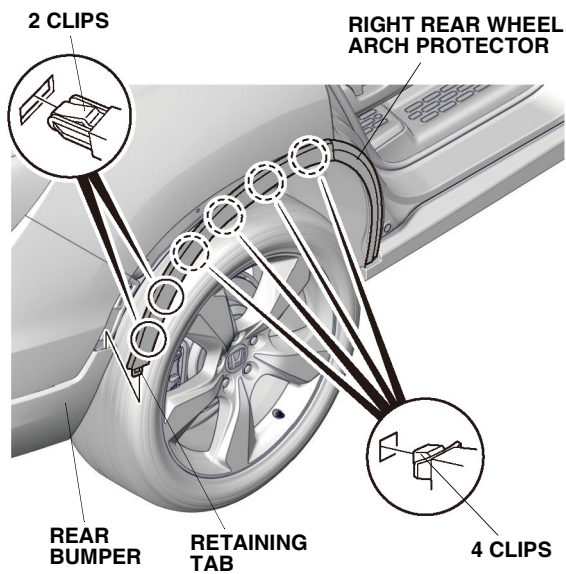


13. Open the right rear door.



QH51502AC

14. Remove the two self-tapping screws.
15. Release the right rear wheel arch protector.

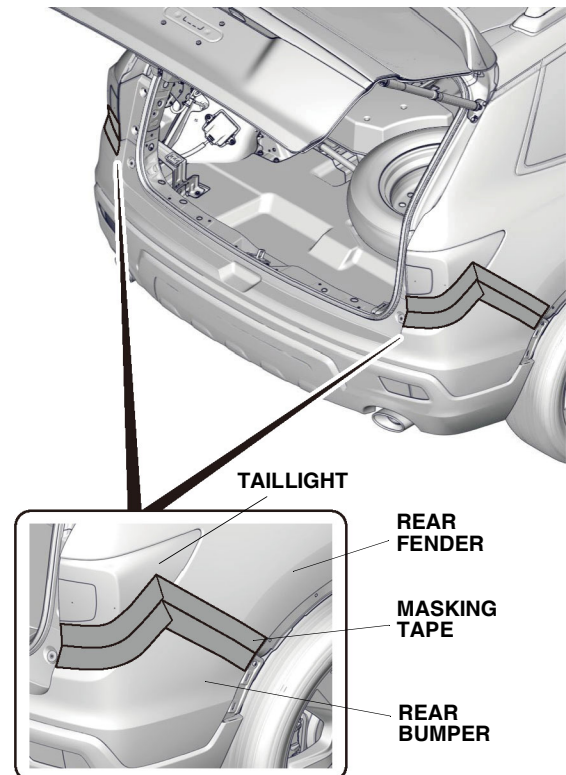


QH51503AC

16. Repeat steps 13 through 15 on the left side of the vehicle.

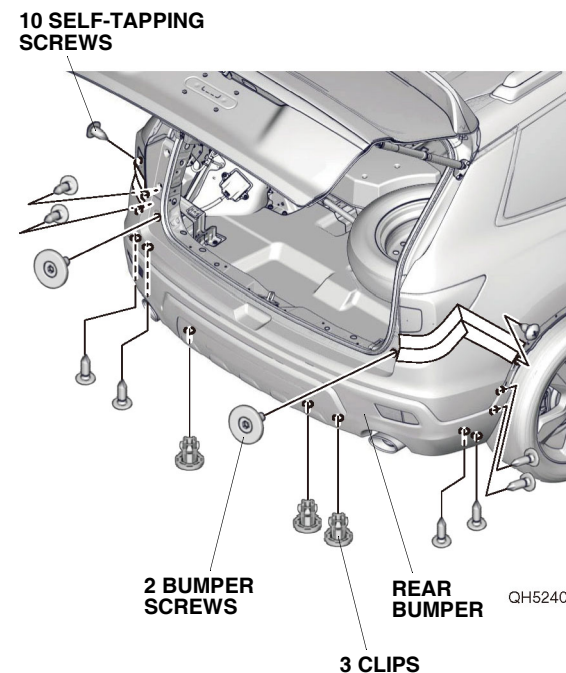
17. Remove the rear bumper:

- Apply masking tape as shown.



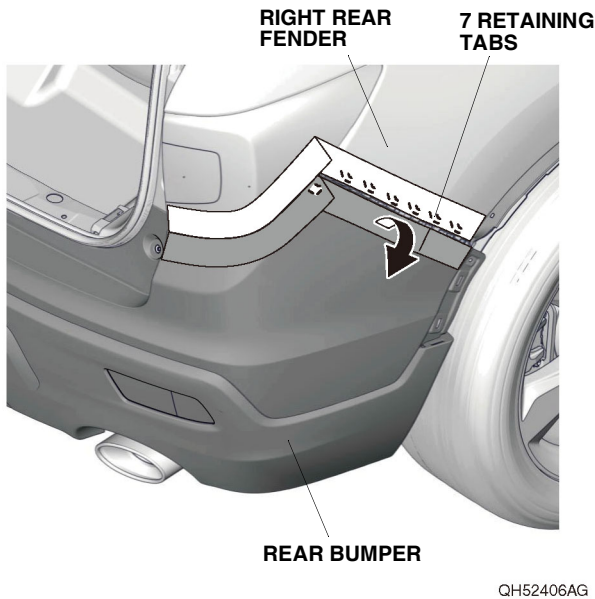
QH52404AG

- Remove the two bumper screws, 10 self-tapping screws, and three clips.

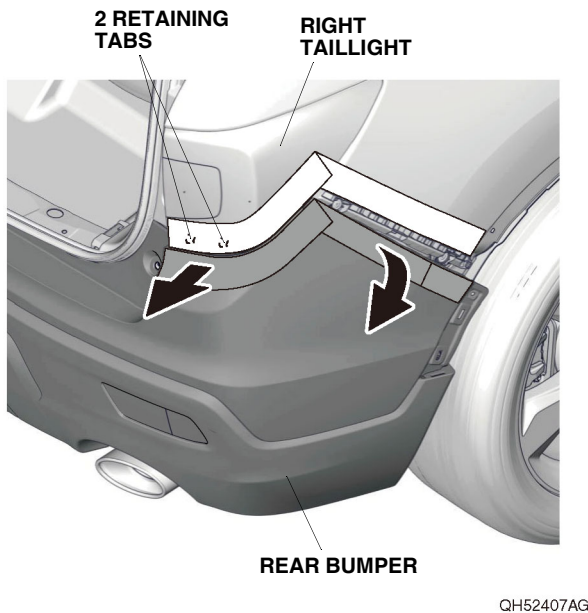


QH52405AG

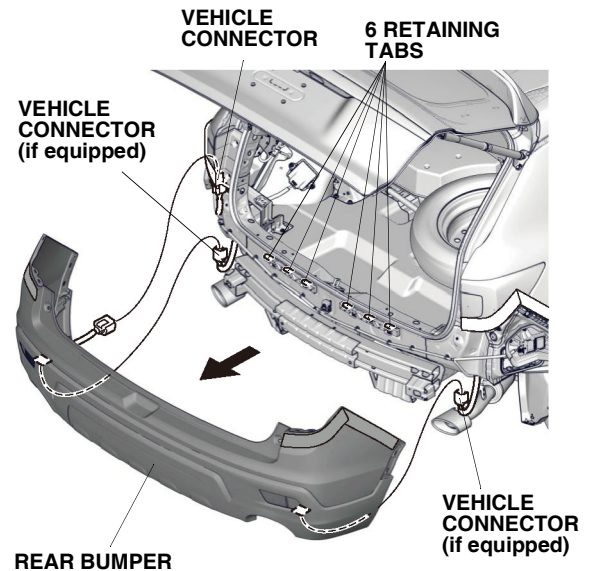
- With the help of an assistant, release the seven retaining tabs along the fenderwell on each side.



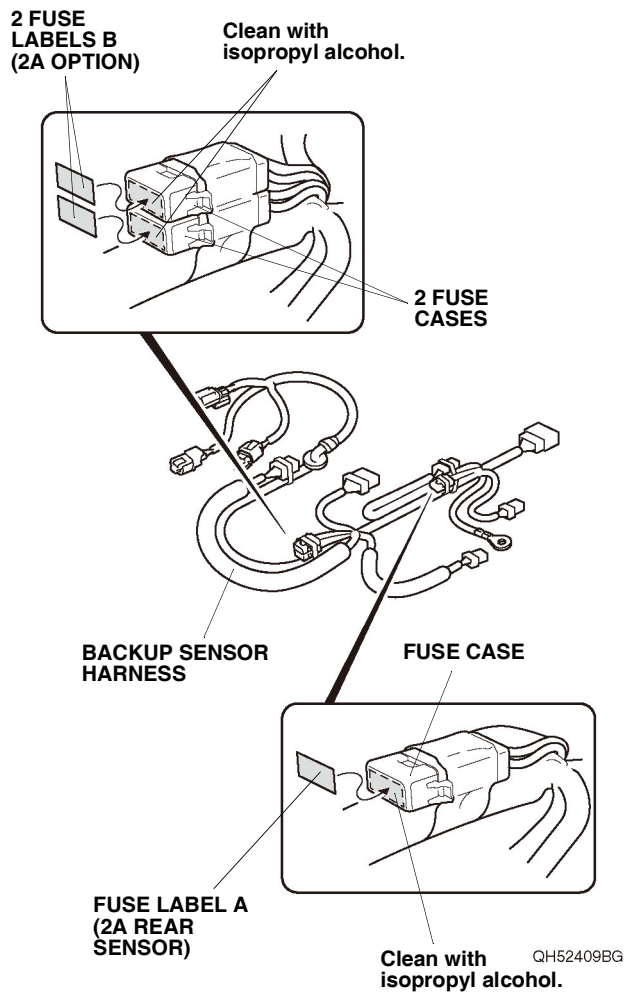
- With the help of an assistant, release the two retaining tabs on each side.



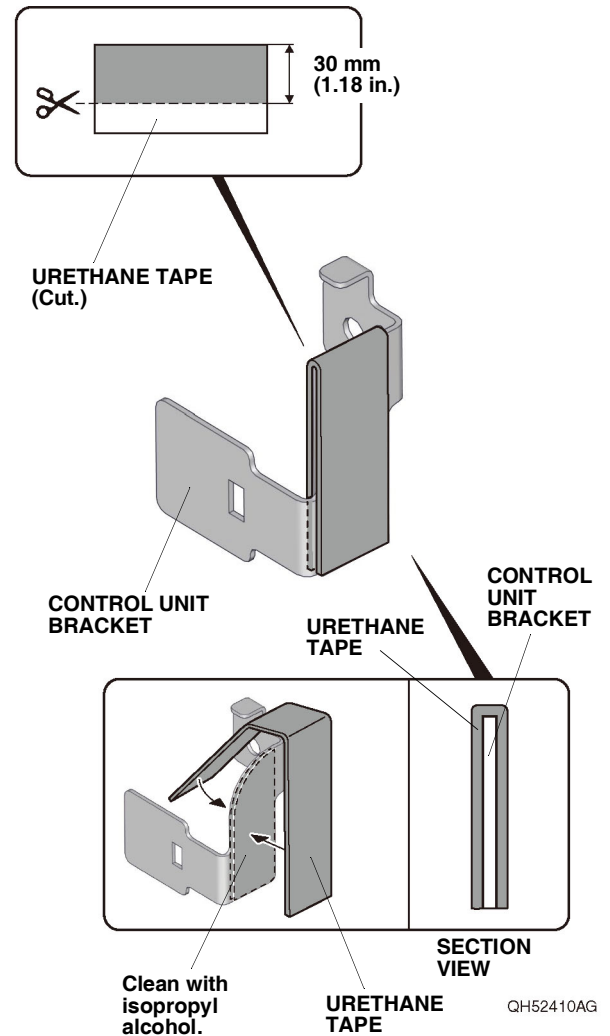
- With the help of an assistant, remove the rear bumper, and unplug the vehicle connectors.
- Place the rear bumper on a blanket.



18. Using isopropyl alcohol on a shop towel, thoroughly clean the fuse cases where the fuse labels will attach. Attach the fuse label A (2A REAR SENSOR) and two fuse labels B (2A OPTION) to the three fuse cases on the backup sensor harness as shown.

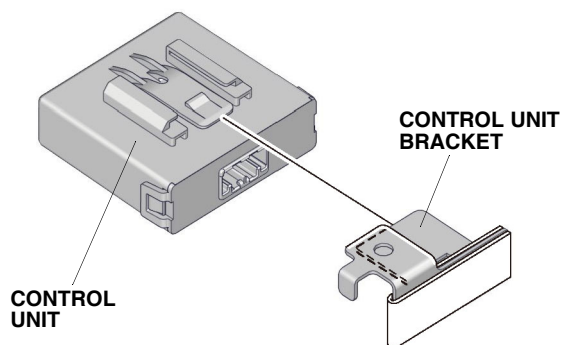


19. Using isopropyl alcohol on a shop towel, thoroughly clean the control unit bracket where the urethane tape will attach.



20. Using scissors, cut the urethane tape as shown, and attach a 30 mm (1.18 in.) piece of urethane tape to the control unit bracket as shown.

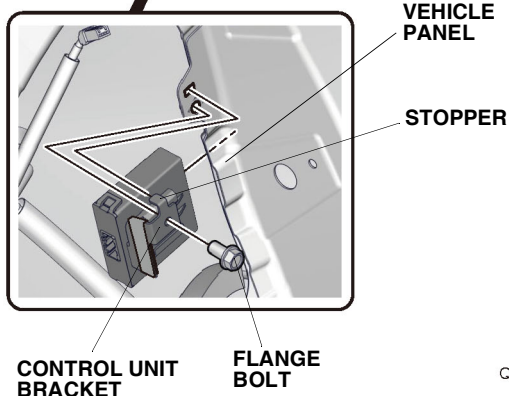
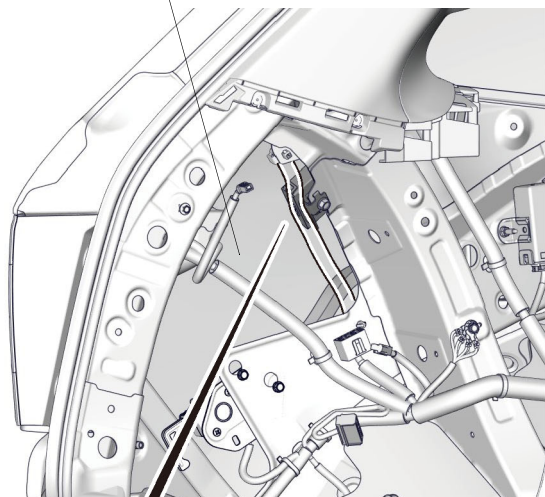
21. Install the control unit bracket to the control unit.



QH52410AG

22. Install the control unit to the vehicle panel with one flange bolt as shown.

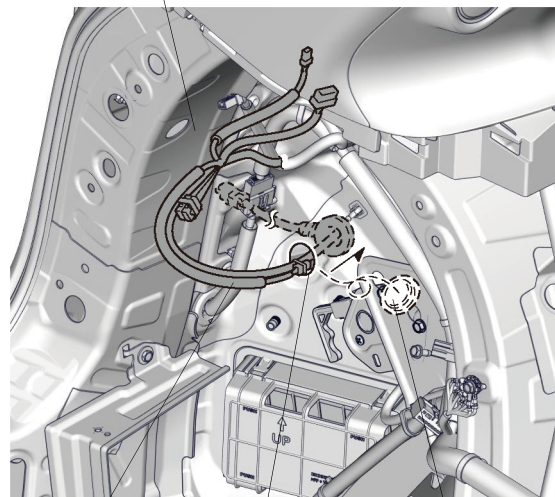
LEFT REAR SIDE TRIM PANEL OPENING



QH52412AG

23. Remove the vehicle grommet. Route the backup sensor harness through the vehicle panel hole as shown.

LEFT REAR SIDE TRIM PANEL OPENING



BACKUP SENSOR HARNESS

VEHICLE PANEL HOLE

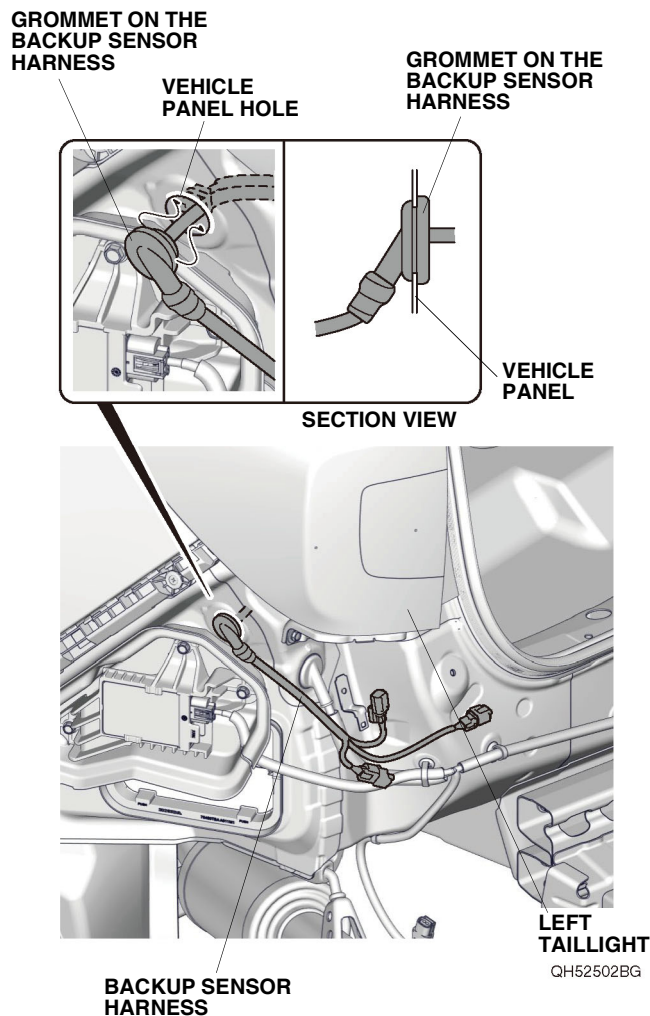
VEHICLE GROMMET (Do not reuse.)

QH52501BG

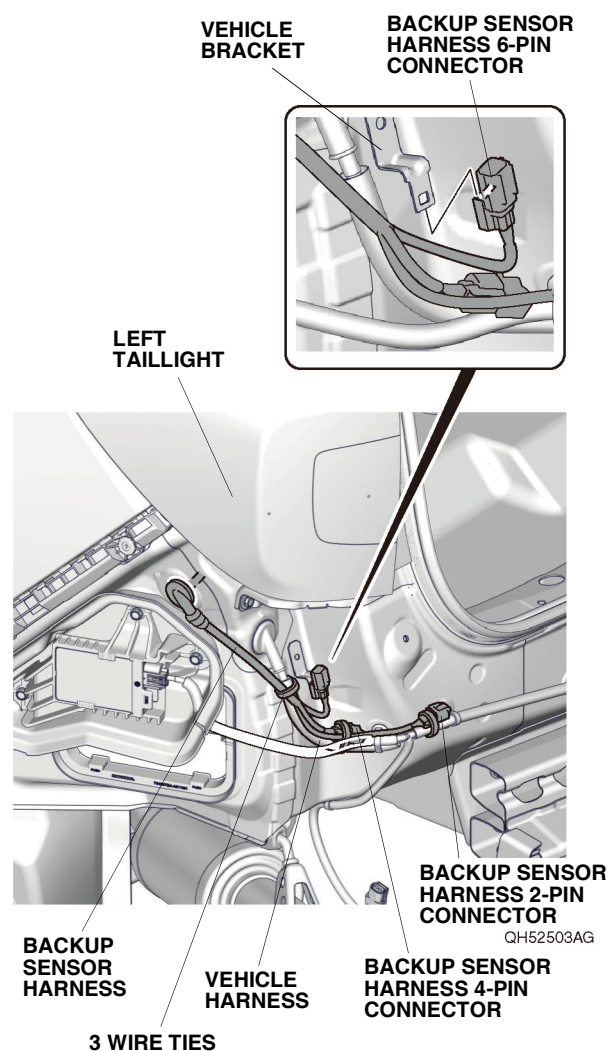
24. Secure the grommet on the backup sensor harness to the vehicle panel hole.

NOTE:

- Install the backup sensor harness by holding the grommet.
- Make sure the grommet is seated properly.

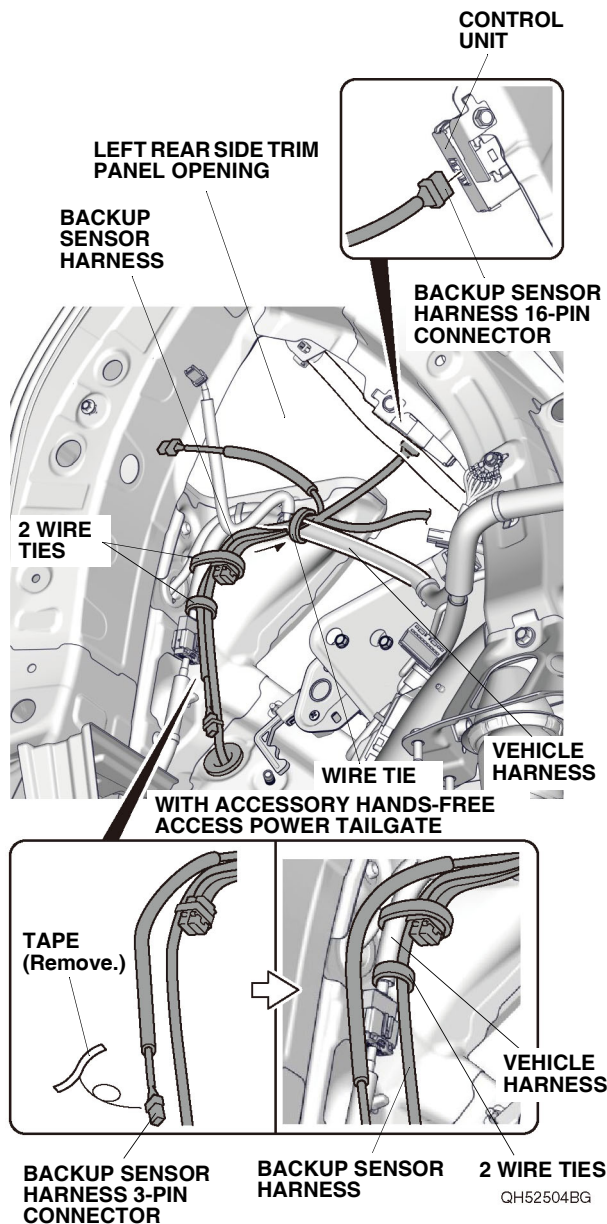


25. Secure the backup sensor harness 6-pin connector to the vehicle bracket as shown.



26. Secure the backup sensor harness and backup sensor harness 2-pin and 4-pin connectors to the vehicle harness with three wire ties as shown.

27. Route the backup sensor harness, and plug the backup sensor harness 16-pin connector into the control unit.

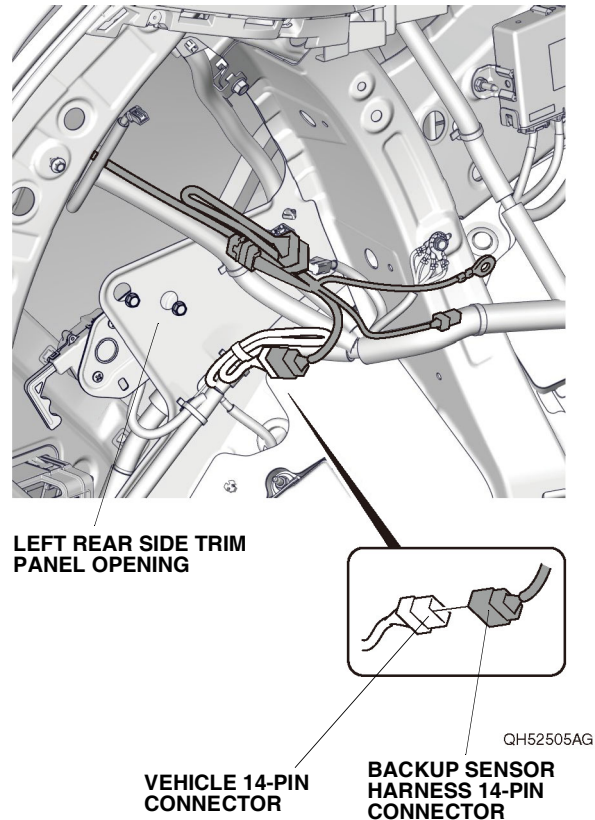


28. Secure the backup sensor harness to the vehicle harness with three wire ties as shown. If the vehicle is equipped with the accessory hands-free access power tailgate, remove the tape to free the backup sensor harness 3-pin connector. Secure the backup sensor harness to the vehicle harness with two wire ties as shown.

If the vehicle is equipped with the accessory trailer harness, go to step 30; otherwise, continue with step 29.

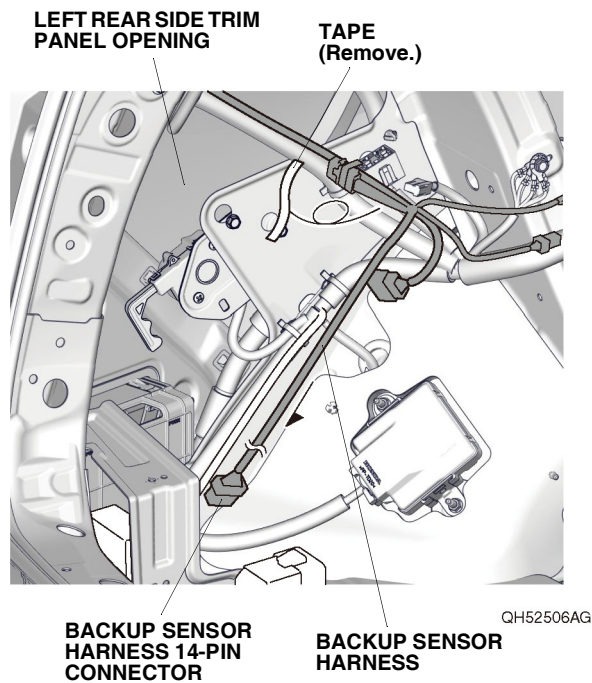
Without accessory trailer harness

29. Plug the vehicle 14-pin connector into the backup sensor harness 14-pin connector. Go to step 33.

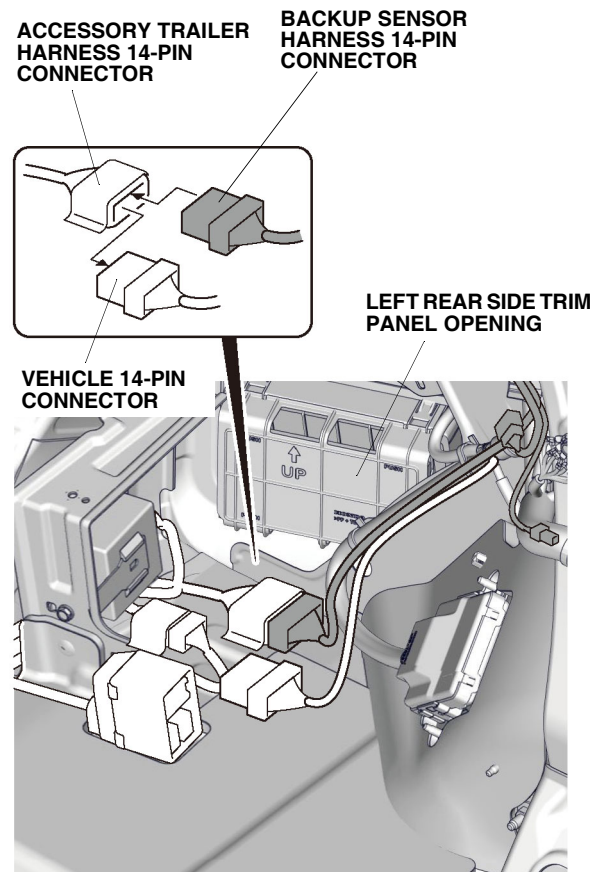


With accessory trailer harness

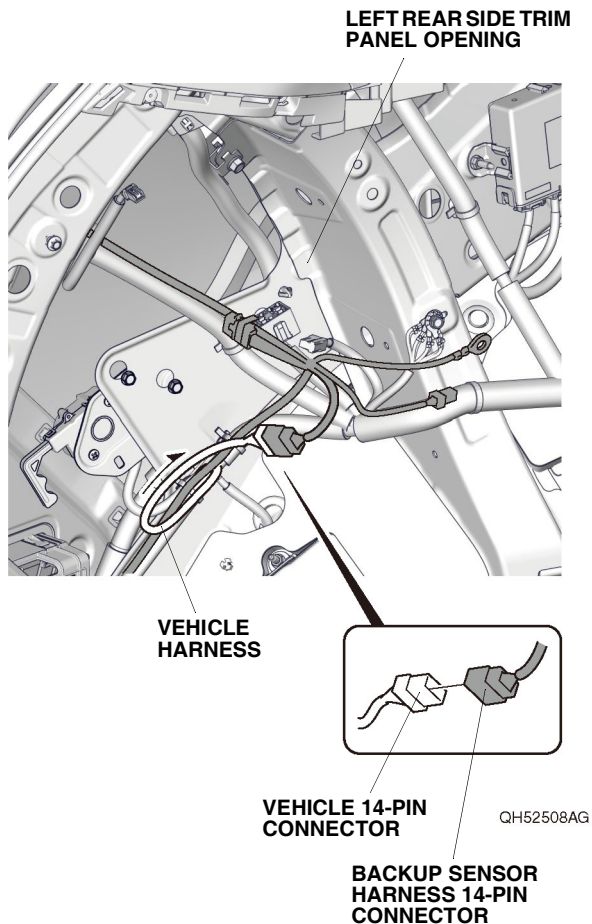
30. Remove the tape to free the backup sensor harness 14-pin connector, and route the backup sensor harness as shown.



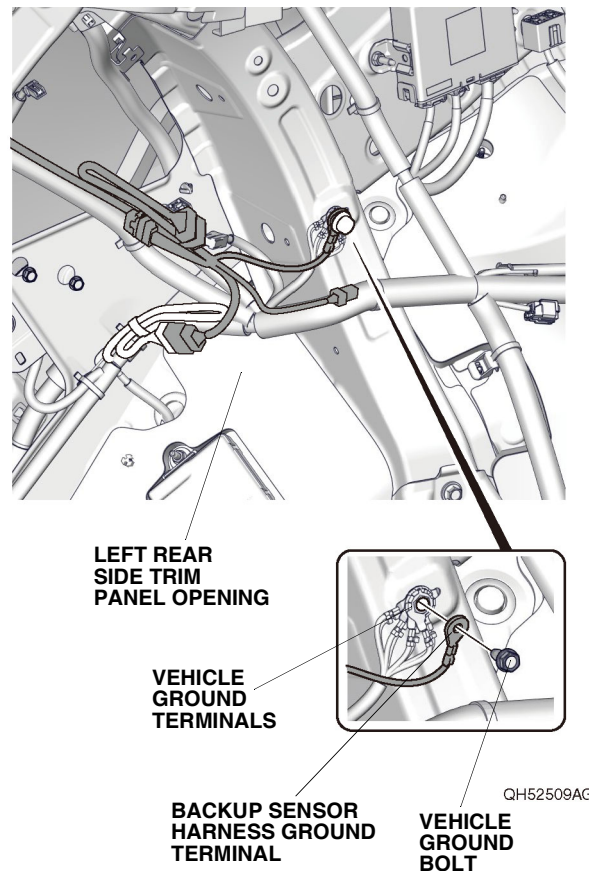
31. Unplug the vehicle 14-pin connector, and plug the backup sensor harness 14-pin connector into the accessory trailer harness 14-pin connector.



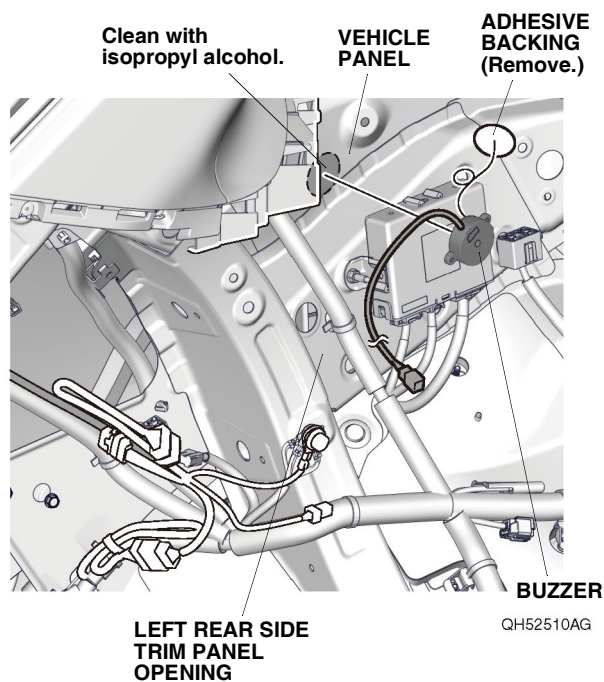
32. Route the vehicle harness, and plug the vehicle 14-pin connector into the backup sensor harness 14-pin connector.



33. Remove the vehicle ground bolt, and secure the backup sensor harness ground terminal to the vehicle ground terminals using that bolt. **NOTE:** Do not put the ground terminal calkings on top of one another.

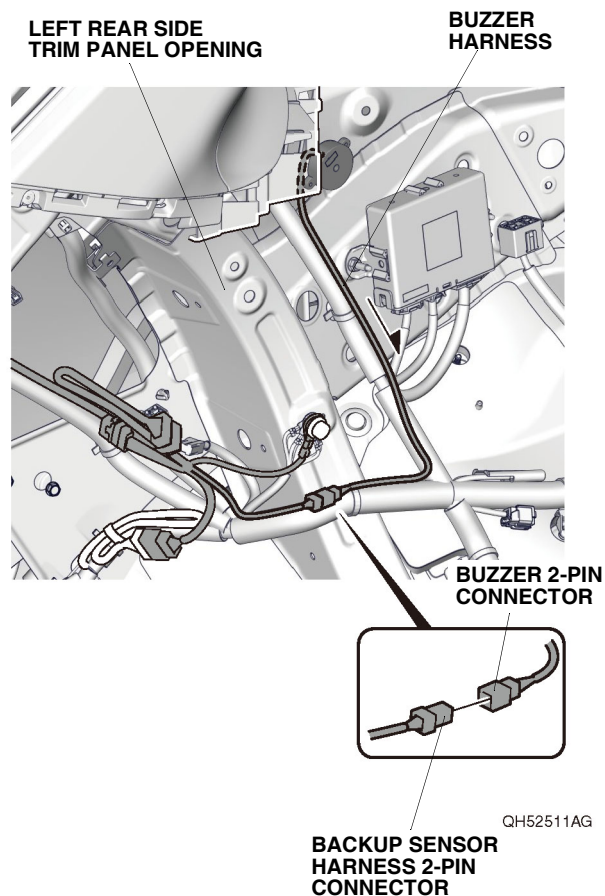


34. Using isopropyl alcohol on a shop towel, thoroughly clean the vehicle panel where the buzzer will attach.

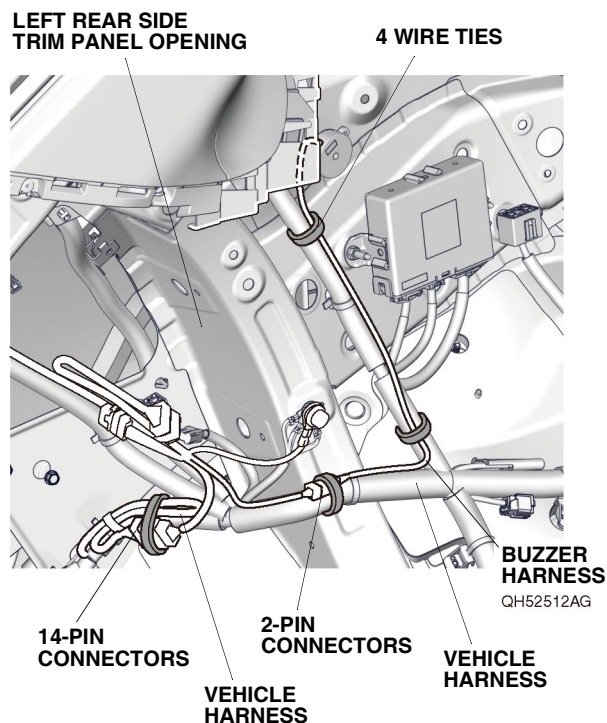


35. Remove the adhesive backing from the buzzer and attach the buzzer to the vehicle panel as shown.

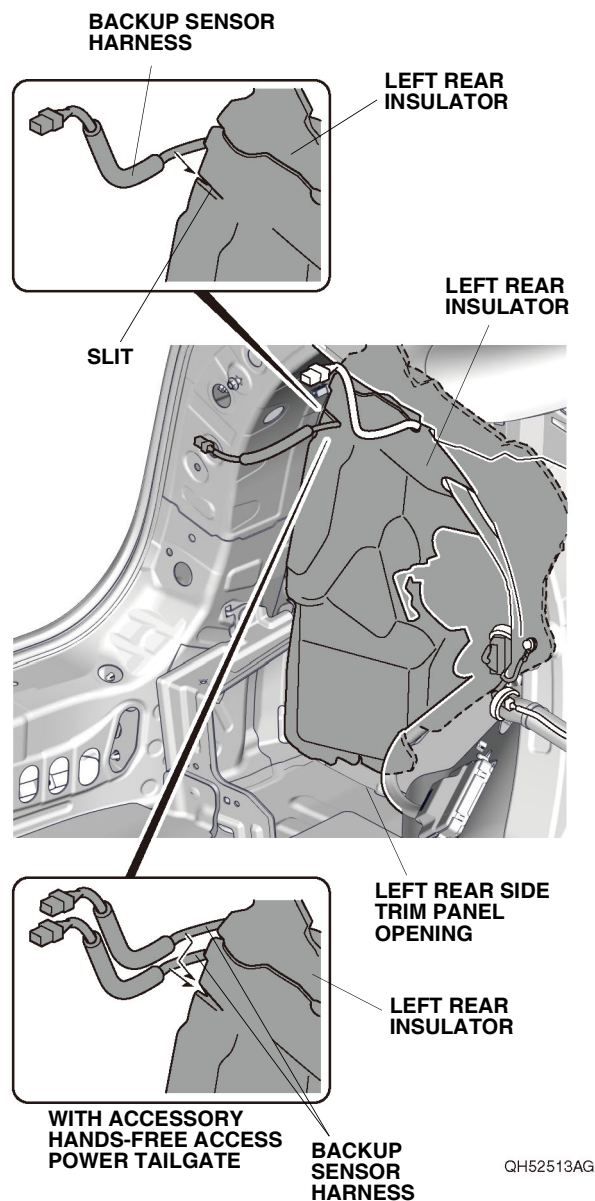
36. Route the buzzer harness, and plug the backup sensor harness 2-pin connector into the buzzer 2-pin connector.



37. Secure the buzzer harness, vehicle harness, 2-pin connectors, and 14-pin connectors to the vehicle harness with four wire ties as shown.



38. Insert the backup sensor harness to the slit on the left rear insulator as shown. Install the left rear insulator.



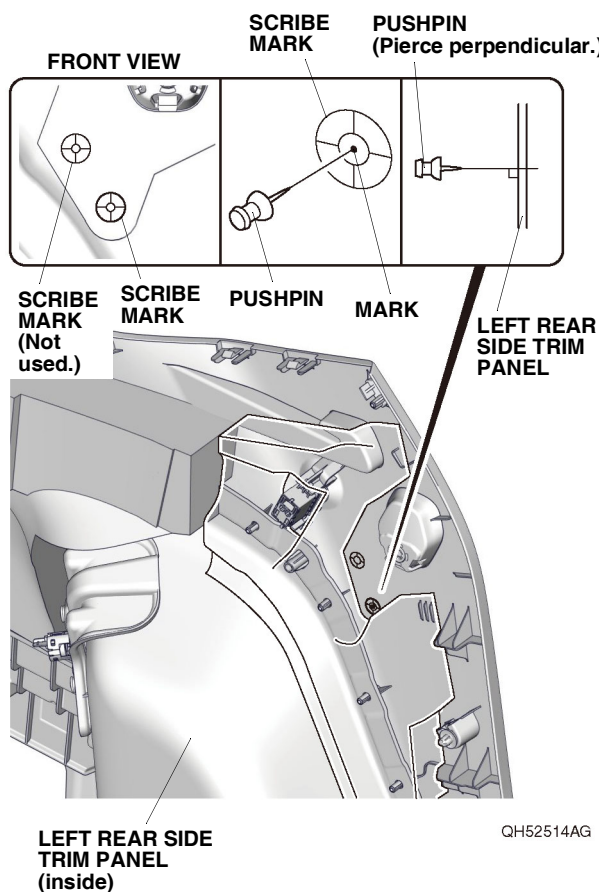
If the vehicle is equipped with the accessory rear side lining protectors, go to step 40; otherwise, continue with step 39.

Without accessory rear side lining protectors

39. Using a pushpin, pierce the left rear side trim panel as shown. Go to step 42.

NOTE:

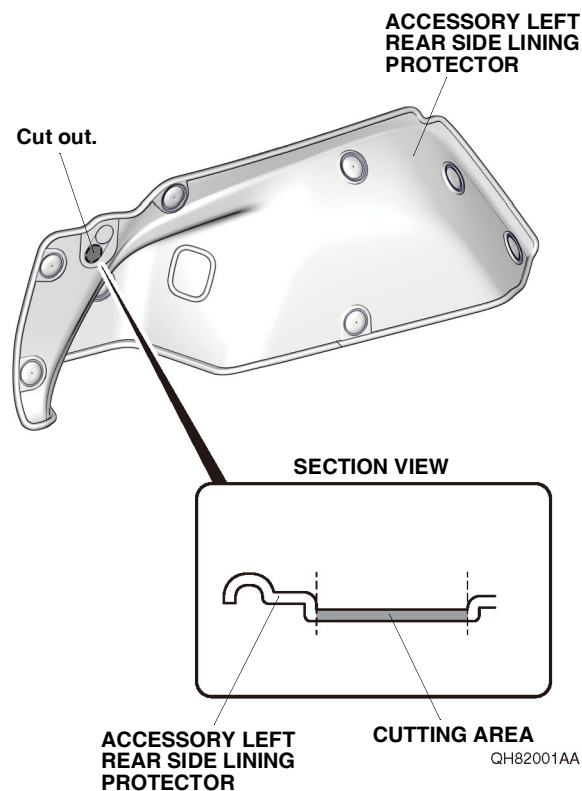
- Make sure to locate the correct scribe mark.
- Make sure to pierce perpendicular to the left rear side trim panel.



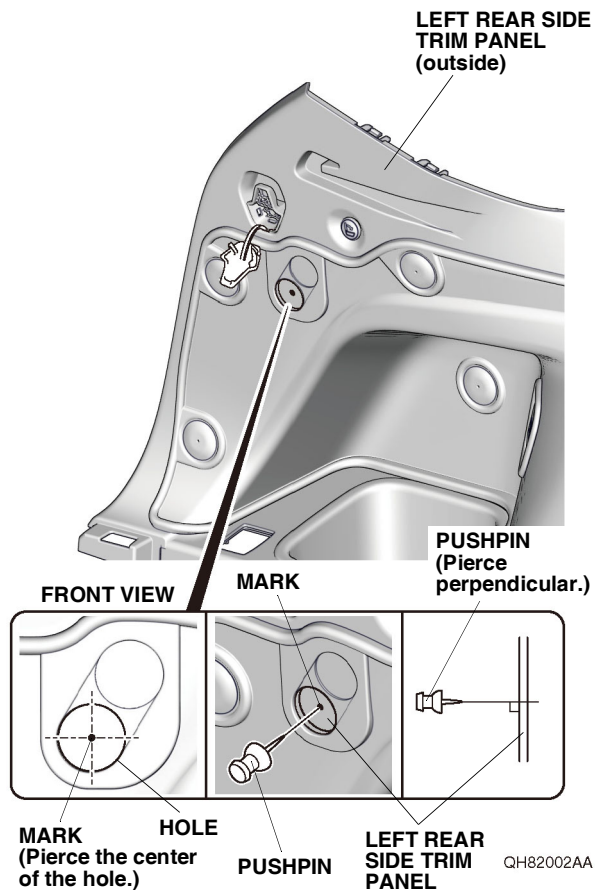
With accessory rear side lining protectors

40. Remove the accessory left rear side lining protector. Cut out the accessory left rear side lining protector as shown.

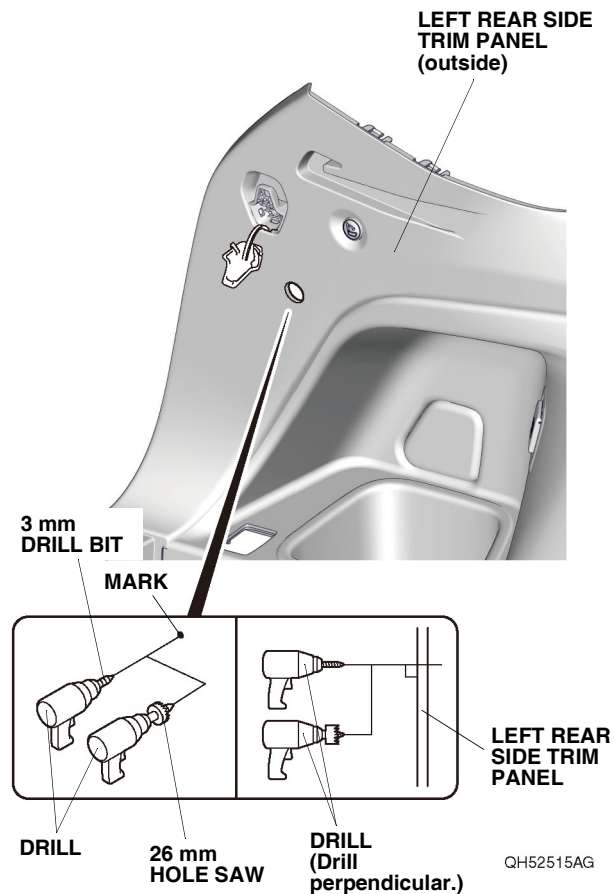
NOTE: Make sure that the accessory left rear side lining protector is correctly cut.



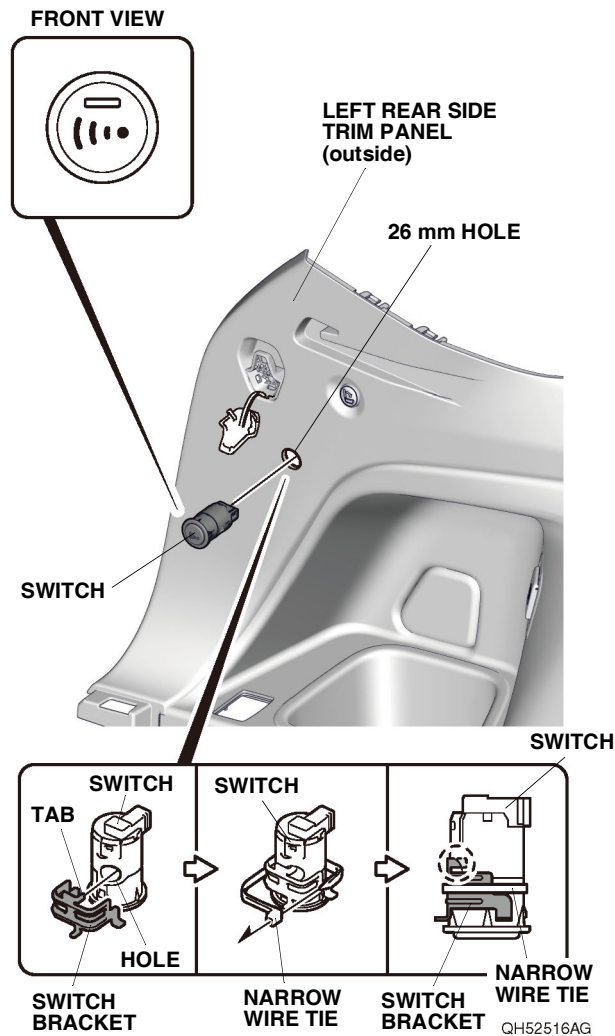
41. Install the accessory left rear side lining protector. Using a pushpin, pierce the left rear side trim panel as shown. Remove the accessory left rear side lining protector.
- NOTE: Make sure to pierce perpendicular to the left rear side trim panel.



42. While wearing eye protection, drill the pierced mark on the left rear side trim panel with a 3 mm drill bit. Enlarge a 3 mm hole to 26 mm using a 26 mm hole saw. Remove any burrs.
- NOTE: Make sure to drill perpendicular to the left rear side trim panel.

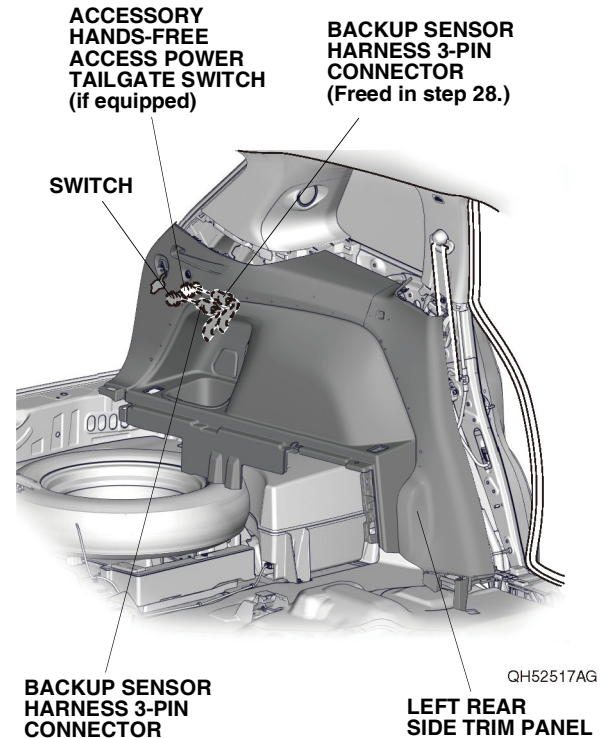


43. Install the switch into the 26 mm hole in the left rear side trim panel.
- NOTE:** Make sure to install the switch in the correct orientation.



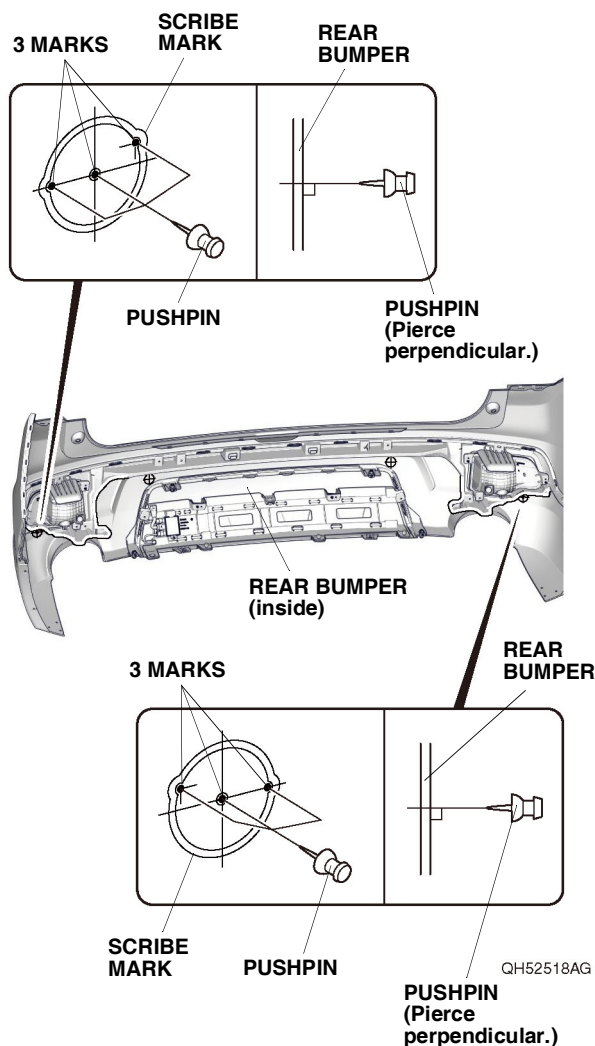
44. Line up the tab on the switch bracket with the hole on the switch and secure the switch bracket to the switch with one narrow wire tie.
- NOTE:** Firmly press the switch bracket against the left rear side trim panel, and make sure that there is no clearance between the switch and left rear side trim panel.

45. Bring the left rear side trim panel into position. Plug the backup sensor harness 3-pin connector into the switch. If the vehicle is equipped with the accessory hands-free access power tailgate, plug the backup sensor harness 3-pin connector into the accessory hands-free access power tailgate switch.



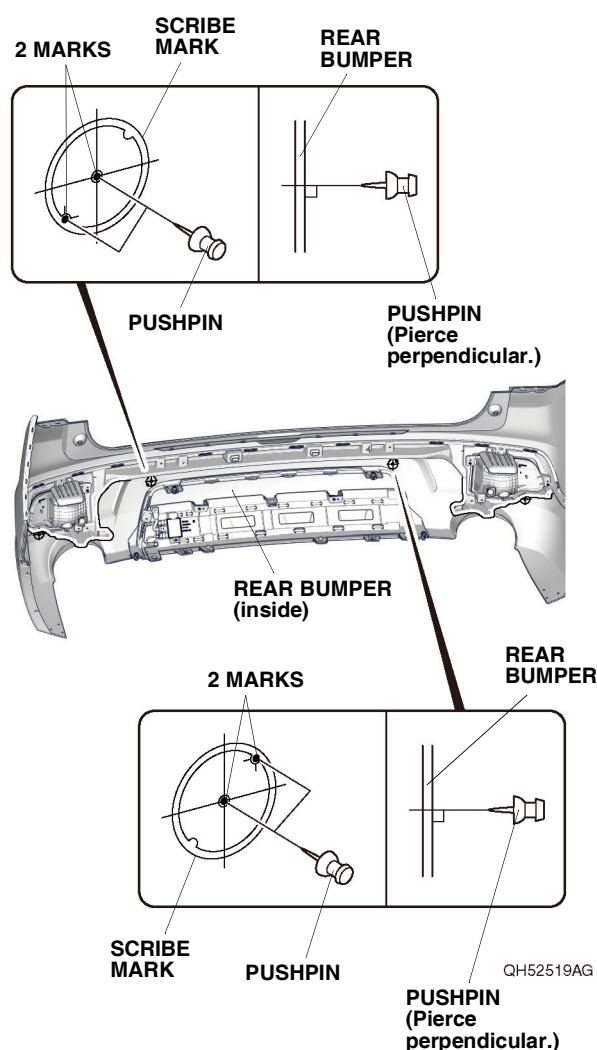
46. Mark the inside of the rear bumper:

- Locate the two scribe marks on the inside of the rear bumper.
 - Using a pushpin, pierce the rear bumper at the two scribe marks.
- NOTE: Make sure to pierce the scribe marks perpendicular to the rear bumper.

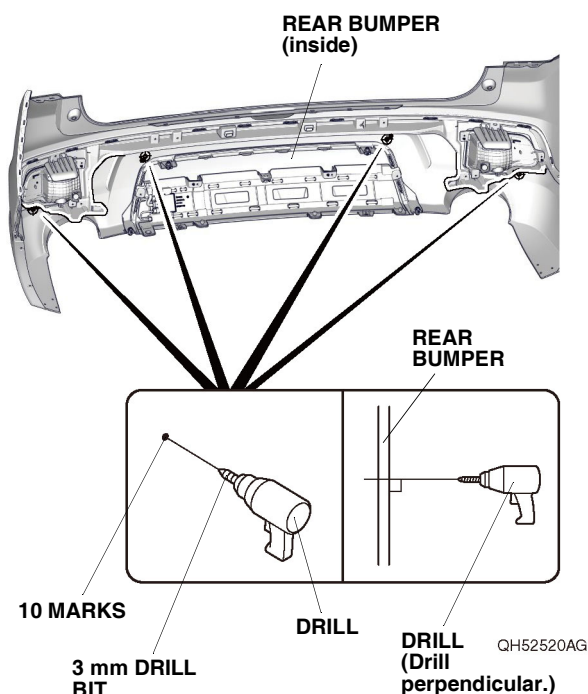


47. Mark the inside of the rear bumper:

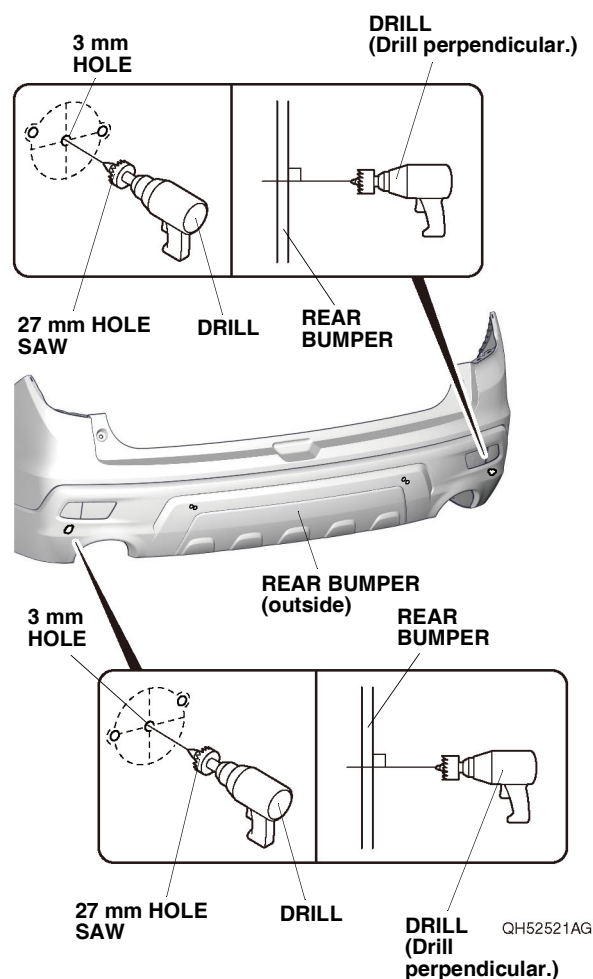
- Locate the two scribe marks on the inside of the rear bumper.
 - Using a pushpin, pierce the rear bumper at the two scribe marks.
- NOTE: Make sure to pierce the scribe marks perpendicular to the rear bumper.



48. While wearing eye protection, drill the 10 pierced marks with a 3 mm drill bit from the inside of the rear bumper.
- NOTE:** Make sure to drill perpendicular to the rear bumper.

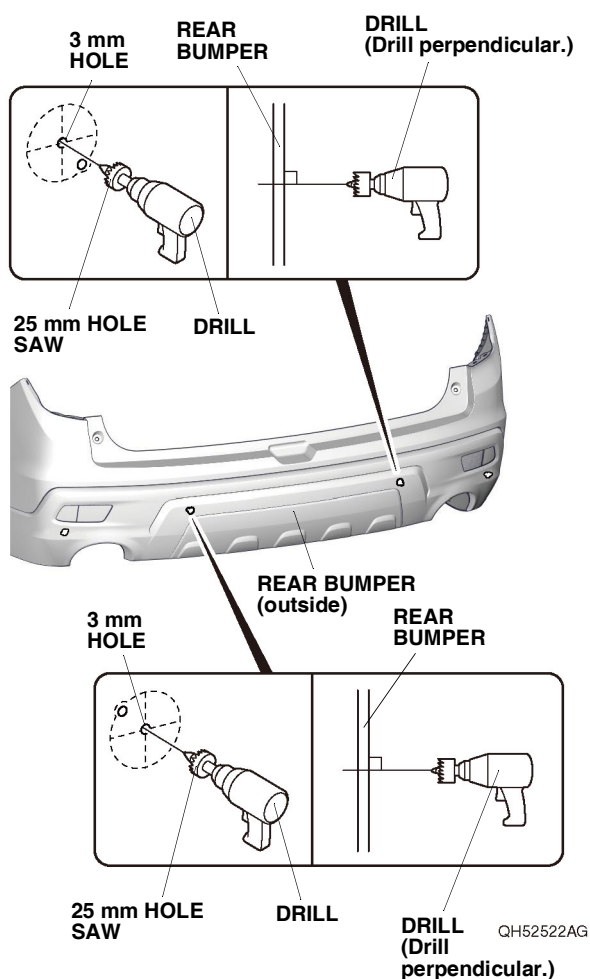


49. While wearing eye protection, and drilling from the painted side of the rear bumper, enlarge the two 3 mm holes to 27 mm using a 27 mm hole saw.
- Make sure to locate the correct hole.
 - Make sure to drill perpendicular to the rear bumper.

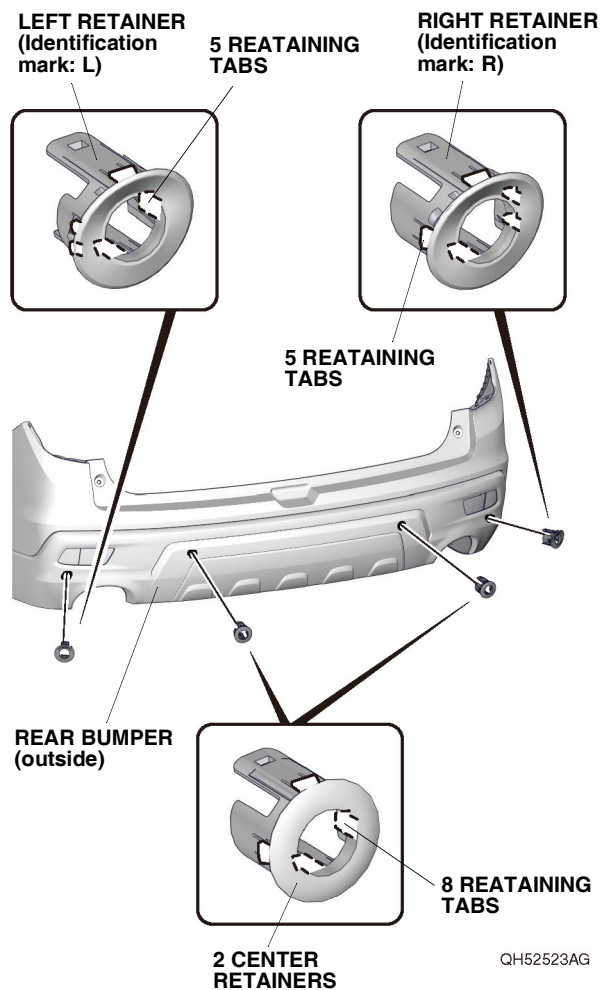


50. While wearing eye protection, and drilling from the painted side of the rear bumper, enlarge the two 3 mm holes to 25 mm using a 25 mm hole saw. Remove any burrs.

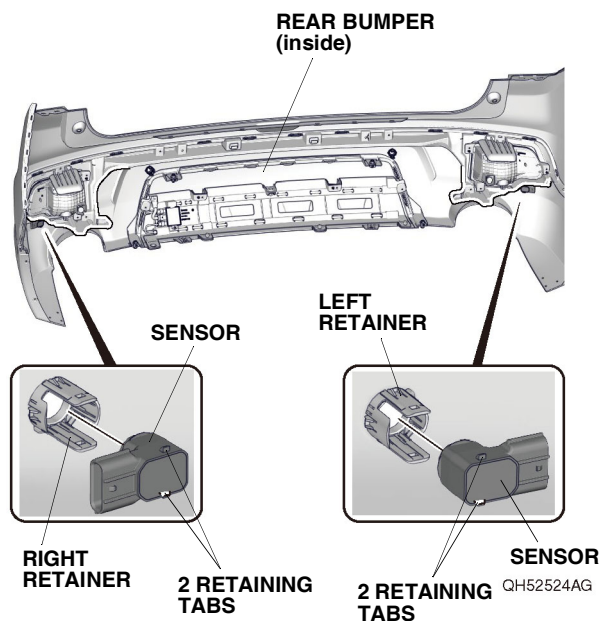
- Make sure to locate the correct hole.
- Make sure to drill perpendicular to the rear bumper.



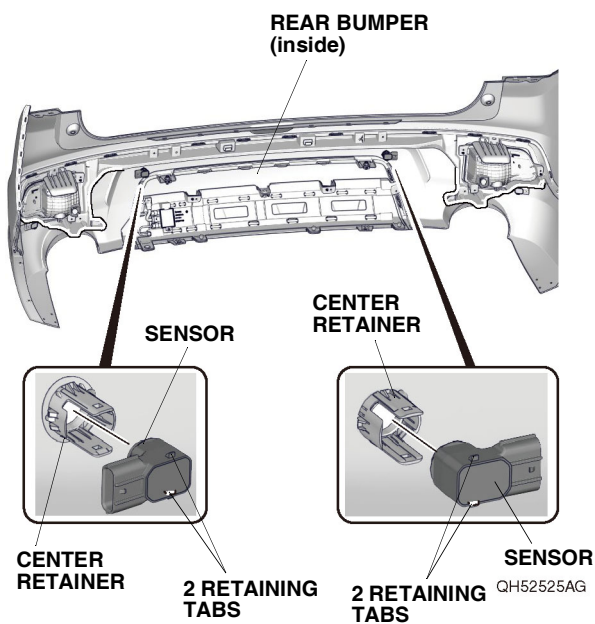
51. Install the left retainer (identification mark: L), right retainer (identification mark: R), and two center retainers as shown.



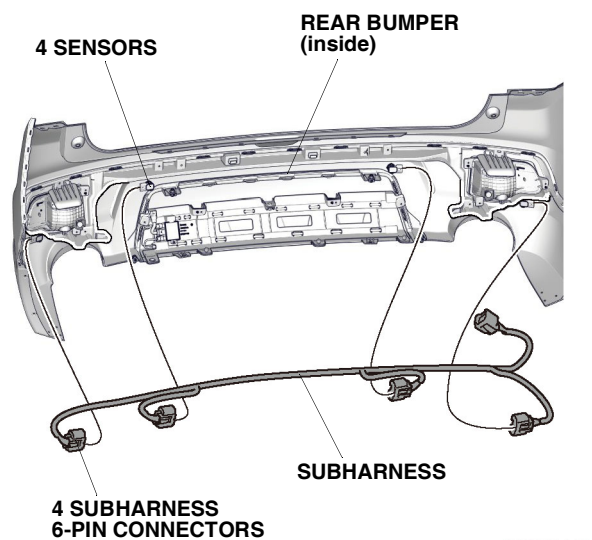
52. Install the two sensors to the left retainer and right retainer.



53. Install the two sensors to the two center retainers.



54. Plug the four subharness 6-pin connectors into the four sensors.

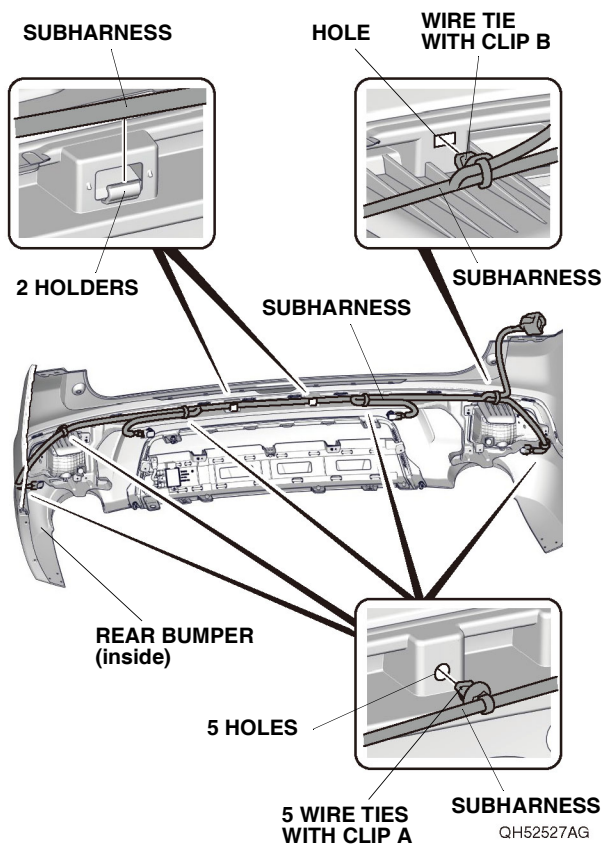


QH52526AG

If the vehicle is equipped with the another harness, go to step 56; otherwise, continue with step 55.

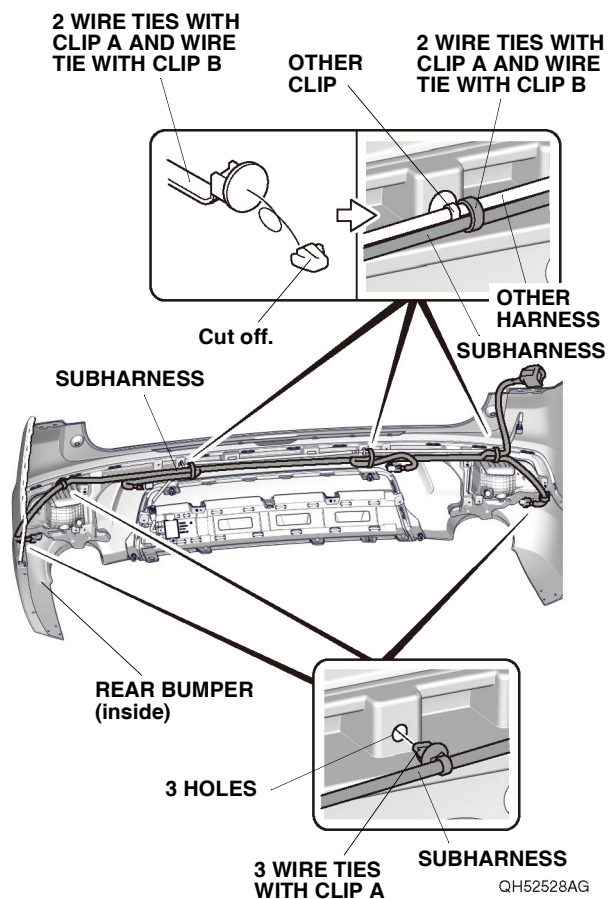
Without other harness

55. Secure the subharness to the rear bumper with five wire ties with clip A, one wire tie with clip B, and two holders as shown. Go to step 58.



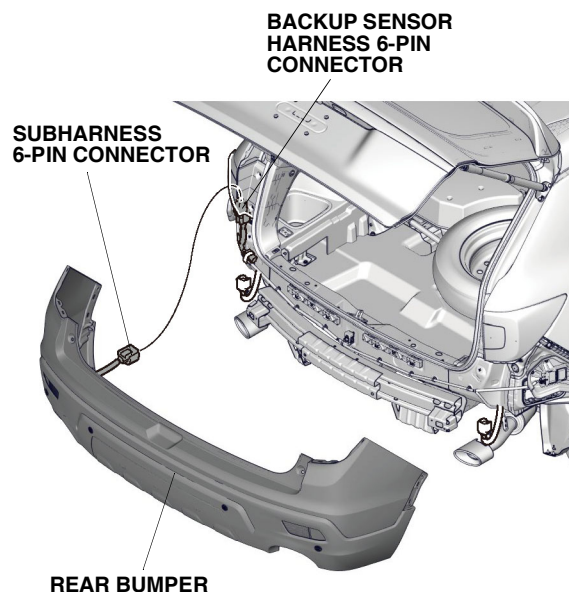
With other harness

56. Cut off the clip portion of two wire ties with clip A and one wire tie with clip B. Secure the subharness to the other harness with two wire ties with clip A and one wire tie with clip B as shown.



57. Secure the subharness to the rear bumper with three wire ties with clip A as shown.

58. With the help of an assistant, bring the rear bumper close to the vehicle, and plug the subharness 6-pin connector into the backup sensor harness 6-pin connector. Install the rear bumper.



QH52529AG

59. Check that all wire harnesses are routed properly and that all connectors are plugged in.
60. Install all removed parts except for the front bulkhead cover and the intake air tube.
61. Connect the negative cable to the battery.
62. Install the front bulkhead cover and the intake air tube.
63. Press and hold the audio unit power button for 2 seconds to restore the audio and navi (if equipped) system functions.
64. Set the clock on vehicles without navigation.
65. If necessary, restore the systems back to normal operation as described in the service information.

Check the Operation of the Backup Sensors

66. Make sure that the backup sensors work properly as described in the accessory user's information manual with this kit.