

Germain Honda of College Hills



INSTALLATION INSTRUCTIONS

Accessory
ALL-SEASON FLOOR MATS
P/N 08P17-THR-100A

Application
2023 ODYSSEY

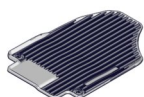
Publications No.
VERSION 1
Issue Date
MAR 2022

PARTS LIST

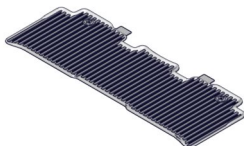
Driver's all-season floor mat



Passenger's all-season floor mat



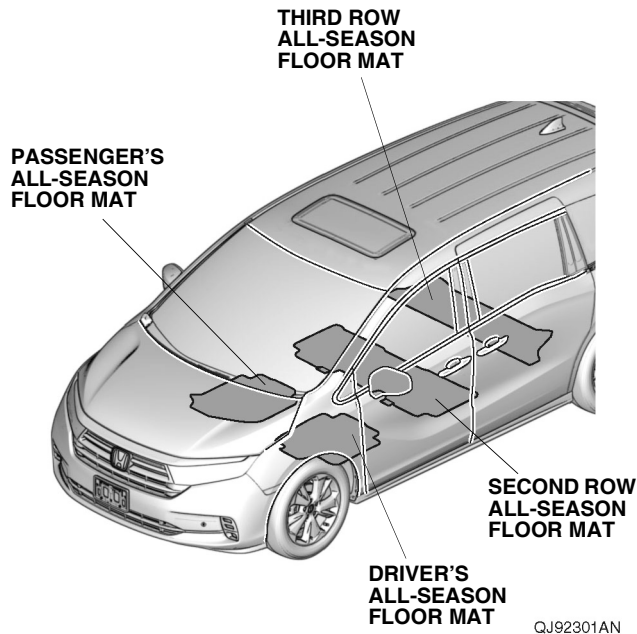
Second row all-season floor mat



Third row all-season floor mat



Illustration of the All-Season Floor Mats in the Vehicle



INSTALLATION

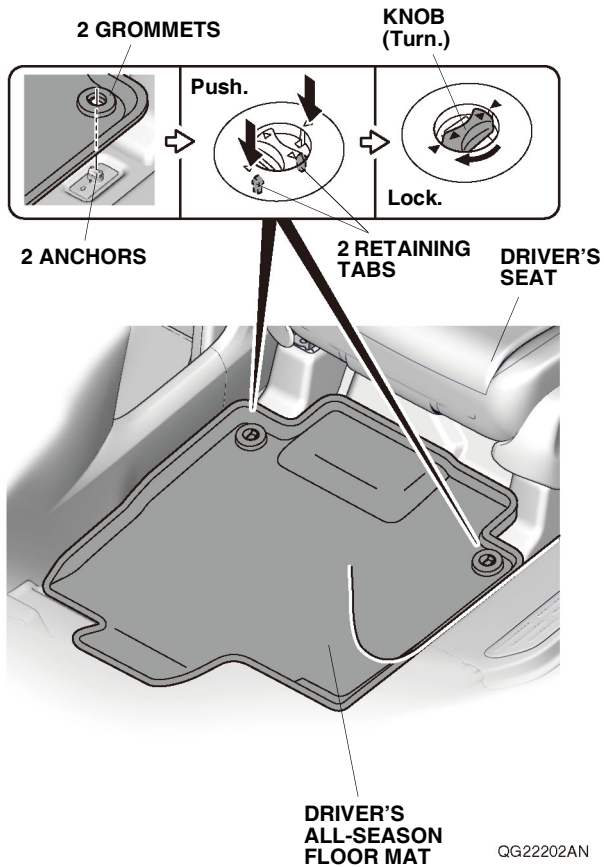
NOTE:

- Before installing the mats, identify their installation positions.
- Connect the mats to the anchors to prevent the mats from sliding forward and possibly interfering with the pedals.
- If you remove a mat, make sure you re-anchor it when you put it back in your vehicle.
- If you replace a mat, use a factory mat designed to be used with the anchors.
- If you use a non-factory mat in the driver's footwell, make sure it fits properly and that it can be used with the anchors.
- Do not put an additional mat on top of the anchored mat. It may slide forward and possibly interfere with the pedals.
- Position the rear seat floor mat properly. If they are not properly positioned, the floor mat can interfere with the front seat functions.

Germain Honda of College Hills

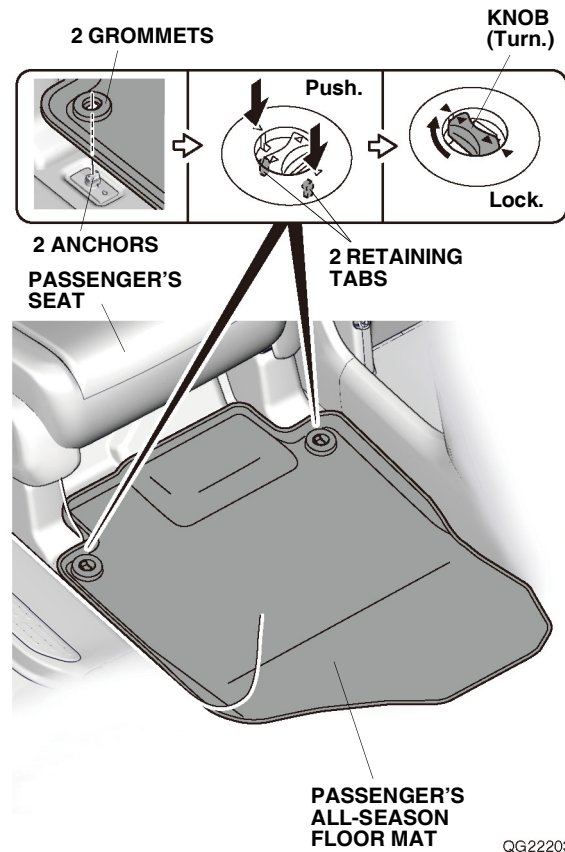
Installing the All-Season Floor Mats

1. Remove the standard floor mats.



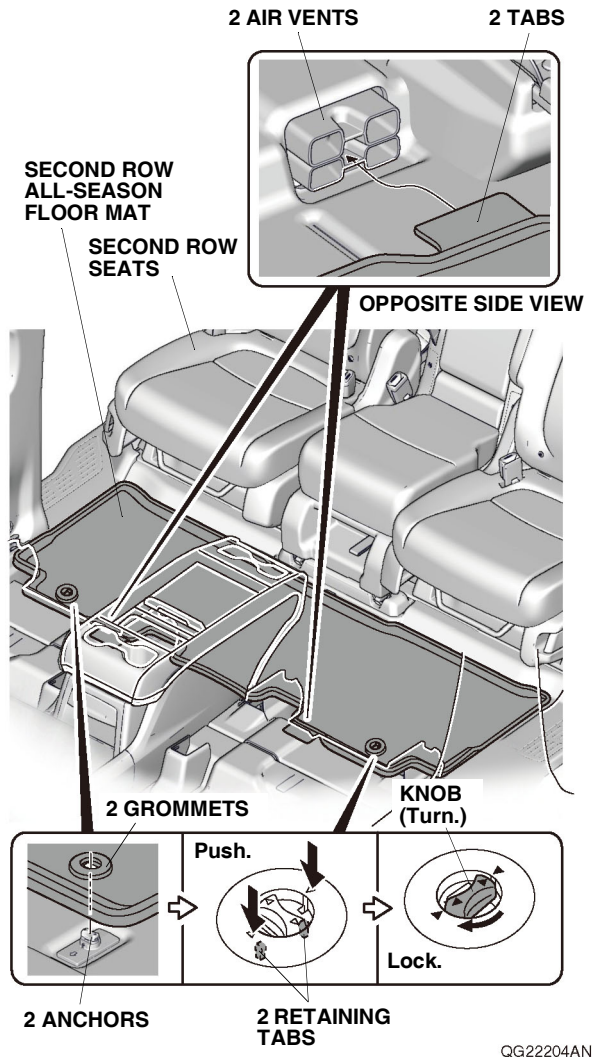
2. Place the grommets in the driver's all-season floor mat over the anchors. Push the grommets into the anchors to secure the retaining tabs, then turn the knobs 90° to secure the driver's all-season floor mat.

3. Place the grommets in the passenger's all-season floor mat over the anchors. Push the grommets into the anchors to secure the retaining tabs, then turn the knobs 90° to secure the passenger's all-season floor mat.



Germain Honda of College Hills

4. Insert the two tabs on the second row all-season floor mat under the two air vents. Place the grommets in the second row all-season floor mat over the anchors. Push the grommets into the anchors to secure the retaining tabs, then turn the knobs 90° to secure the second row all-season floor mat.



5. Place the third row all-season floor mat as shown.

