



INSTALLATION INSTRUCTIONS

Accessory

FENDER EMBLEMS
P/N 08F59-THR-100A

Application

2022 ODYSSEY

Publications No.

VERSION 1

Issue Date

JAN 2021

PARTS LIST

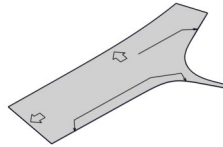
Left front fender emblem
(Identification mark: FR-L)



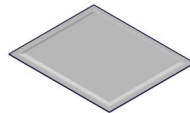
Right front fender emblem
(Identification mark: FR-R)



Template



2 Alcohol wipes



TOOLS AND SUPPLIES REQUIRED

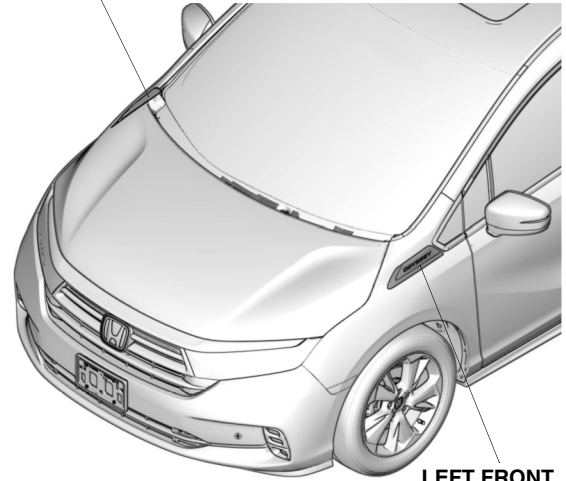
Masking tape

The following tool is available through the Honda Tool and Equipment Program. On the iN, click on Service > Service Bay > Tool and Equipment Program, then enter the number under "Search." Or, call 888-424-6857.

Rubber Roller (T/N MHLE54D)

Illustration of the Fender Emblems on the Vehicle

RIGHT FRONT
FENDER EMBLEM



LEFT FRONT
FENDER EMBLEM

QJ92302AN

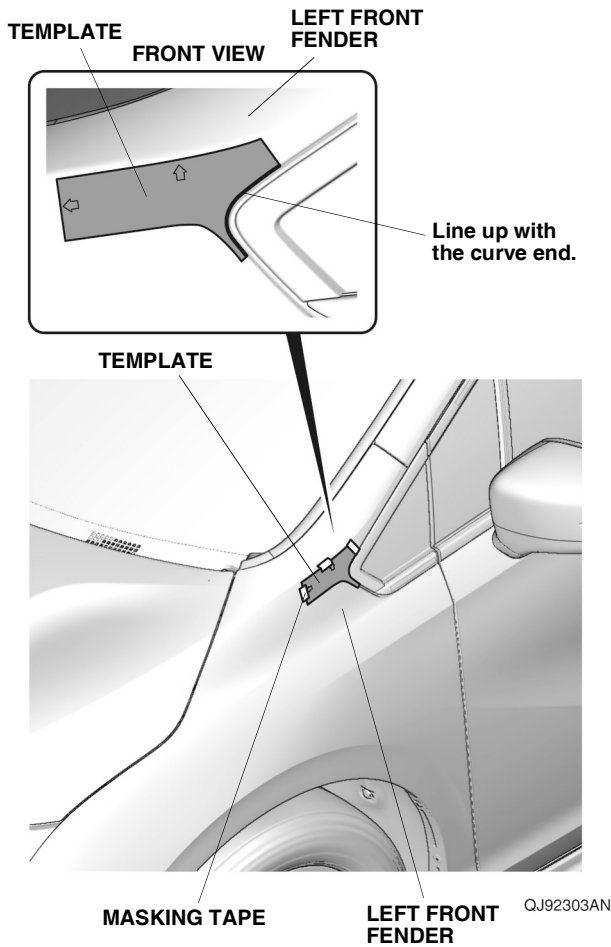
INSTALLATION

Customer Information: The information in this installation instruction is intended for use only by skilled technicians who have the proper tools, equipment, and training to correctly and safely add equipment to your vehicle. These procedures should not be attempted by "do-it-yourselfers."

NOTE:

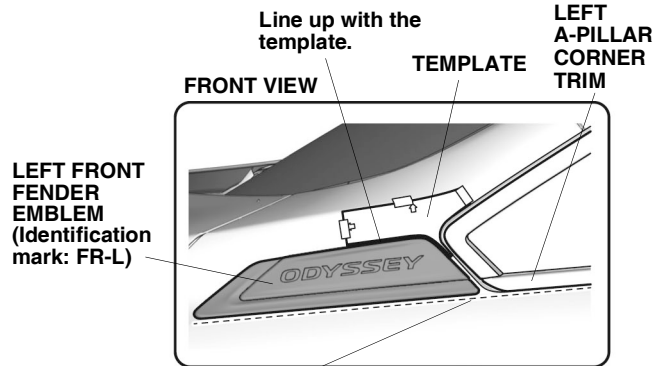
- Be careful not to damage the body paint finish.
- This kit should be installed only if the ambient air temperature is 60°F (15°C) or above.
- To allow the adhesive to cure, do not wash the vehicle for 24 hours. Make sure the customer is aware of this.

1. Line up the template with the curve end, and attach it to the left front fender with masking tape as shown.

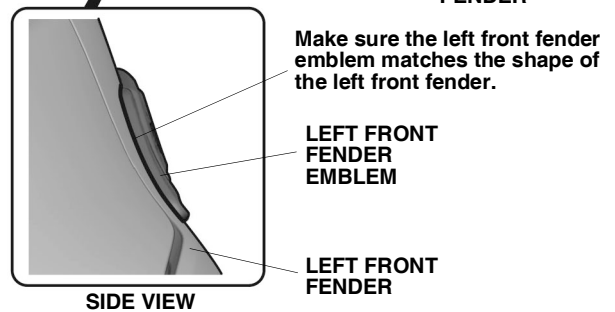
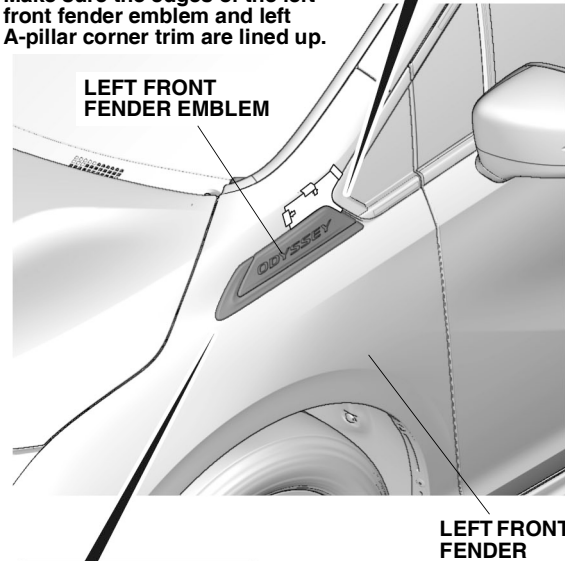


2. Line up the left front fender emblem with the template. Make sure the edges of the left front fender emblem and left A-pillar corner trim are lined up, and the left front fender emblem matches the shape of the left front fender.

NOTE: Check the identification mark and the installation position of the left front fender emblem.

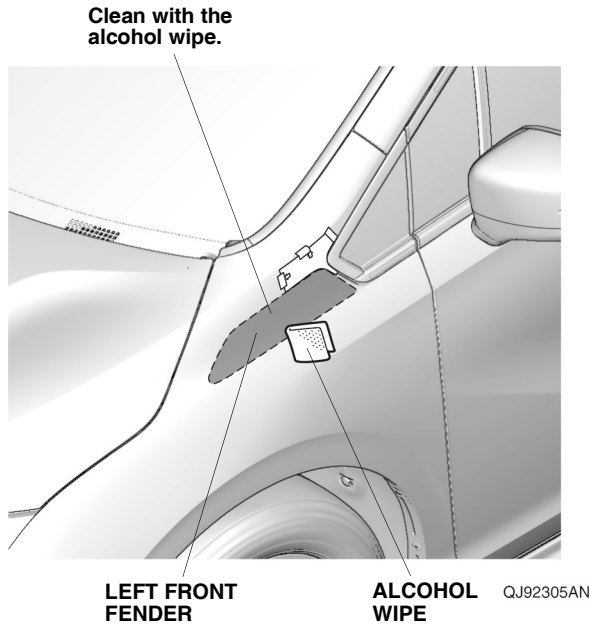


Make sure the edges of the left front fender emblem and left A-pillar corner trim are lined up.

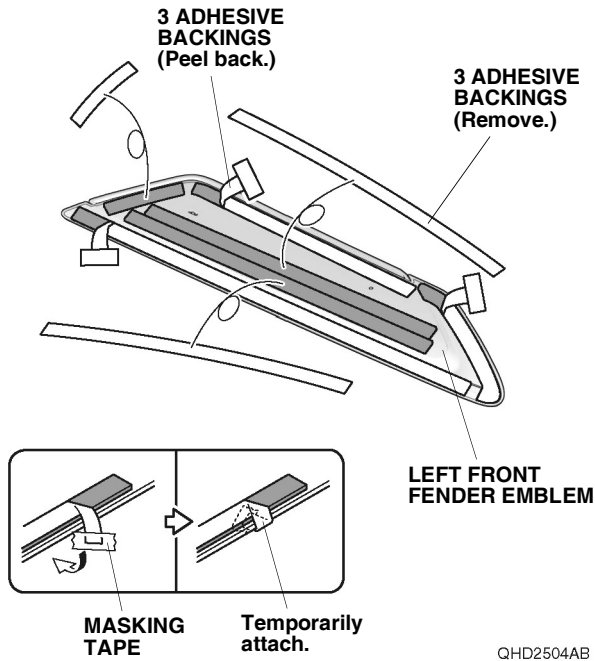


QJ92304AN

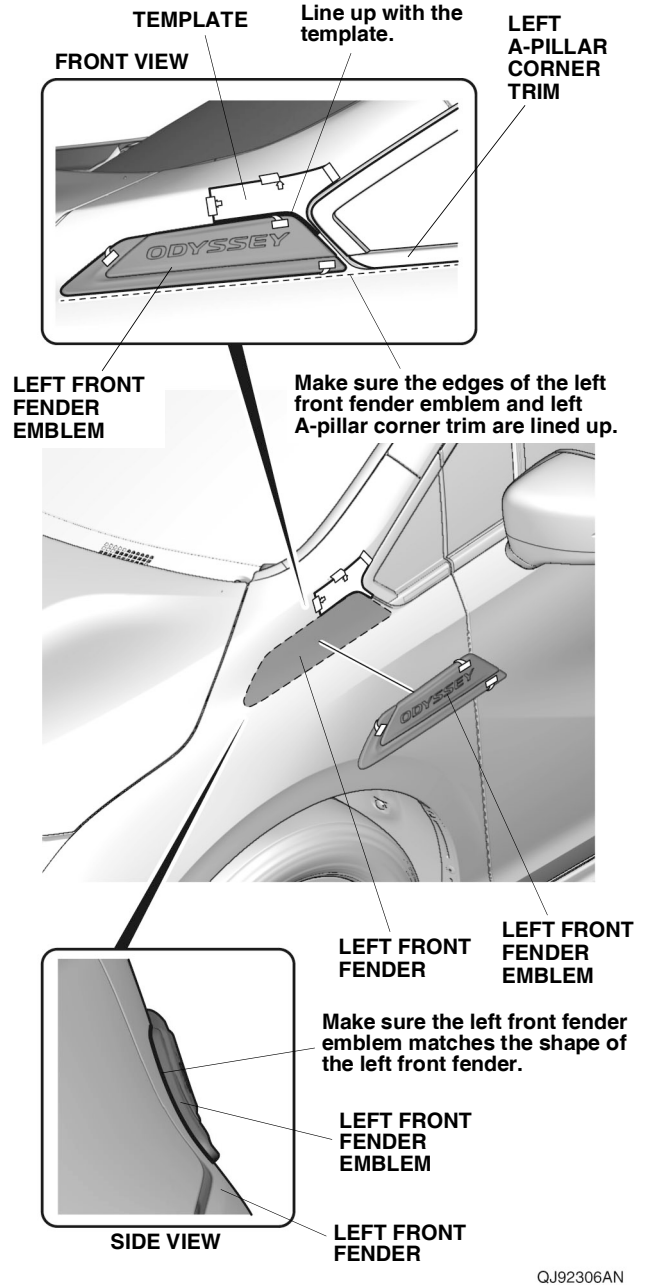
- Using the alcohol wipe, thoroughly clean the left front fender where the left front fender emblem will attach.



- Peel back the adhesive backings, and tape them to the front surface of the left front fender emblem with masking tape. Remove the remaining adhesive backings.



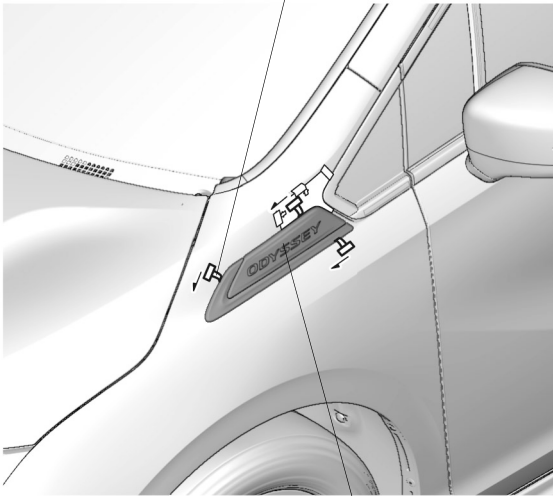
- Line up the left front fender emblem with the template, and attach it to the left front fender as shown.



- Make sure the edges of the left front fender emblem and left A-pillar corner trim are lined up, and the left front fender emblem matches the shape of the left front fender.

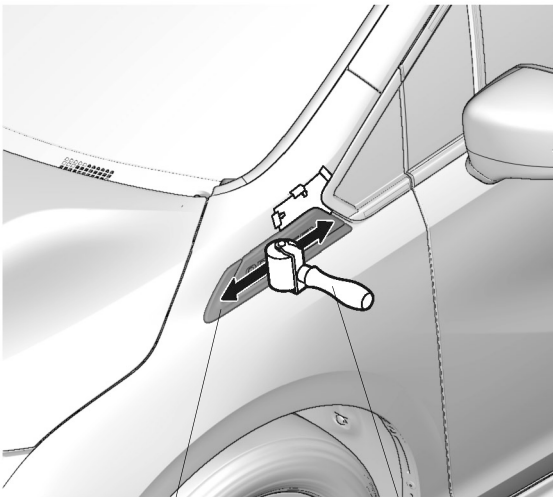
7. While applying light pressure against the left front fender emblem, carefully remove the taped adhesive backings.

**3 ADHESIVE BACKINGS
(Remove.)**



**LEFT FRONT
FENDER EMBLEM** QJ92307AN

8. Using a rubber roller, apply firm pressure against the left front fender emblem and roll from one end to the other. Remove the template.
NOTE: Apply firm pressure, especially at the ends.



**LEFT FRONT
FENDER EMBLEM** **RUBBER
ROLLER** QJ92308AN

9. Turn the template over, and repeat steps 1 through 8 on the right side of the vehicle.