



## HONDA INSTALLATION INSTRUCTIONS

Accessory  
BACKUP SENSORS

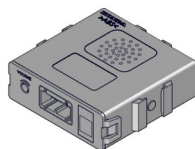
Application  
2022 ODYSSEY

Publications No.  
**VERSION 1**  
Issue Date  
**JAN 2021**

### PARTS LIST

**Backup Sensors Attachment Kit**  
**P/N 08V67-THR-100A**

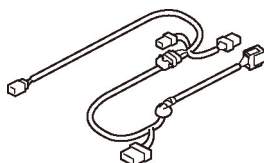
Control unit



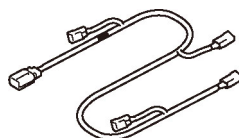
Control unit bracket



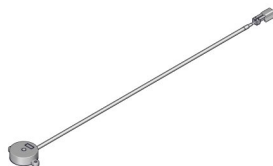
Backup sensor harness



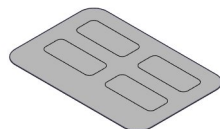
Subharness



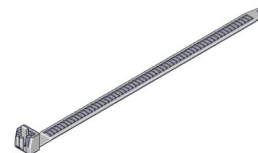
Buzzer



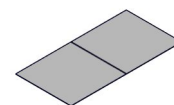
Fuse label



11 Wire ties



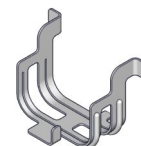
2 Aluminum tapes



Switch



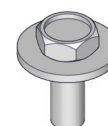
Switch bracket



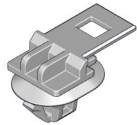
Narrow wire tie



Washer-bolt



Connector clip



Wire tie with clip A



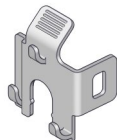
2 Wire ties with clip B



2 Center sensor clips  
(yellow)



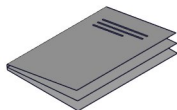
Left corner sensor clip  
(black)



Right corner sensor clip  
(white)

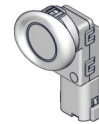


Accessory user's information manual

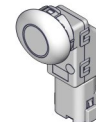


## Backup Sensors Kit P/N 08V67-THR-100K

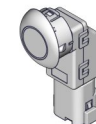
2 Center sensors  
(blue) (yellow dot label)



Right corner sensor  
(white) (yellow dot label)



Left corner sensor  
(white)



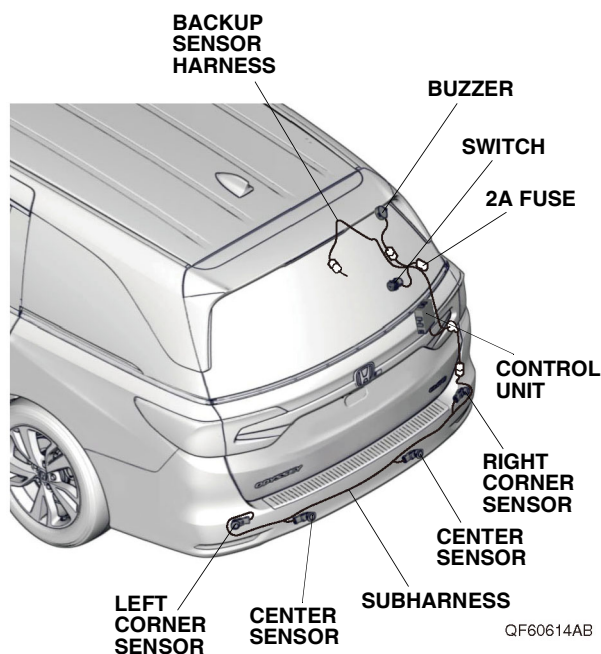
## TOOLS AND SUPPLIES REQUIRED

Phillips screwdriver  
Small flat-tip screwdriver  
10 mm Open end wrench  
10 mm Socket  
Pushpin  
Ratchet  
3 mm Drill bit  
Eye protection (face shield, safety goggles, etc.)  
File  
Masking tape  
5 mm Hex wrench  
Blanket  
Isopropyl alcohol  
Shop towel  
24 mm and 26 mm Hole saws  
Drill  
Stubby Phillips screwdriver  
Diagonal cutters  
Scissors

*The following tools are available through the Honda Tool and Equipment Program. On the iN, click on Service > Service Bay > Tool and Equipment Program, then enter the number under "Search." Or, call 888-424-6857.*

- Trim Tool Set (T/N SOJATP2014)
- Plastic Trim Tool (T/N SILTRIMTL10)

### ***Illustration of the Backup Sensors on the Vehicle***



## INSTALLATION

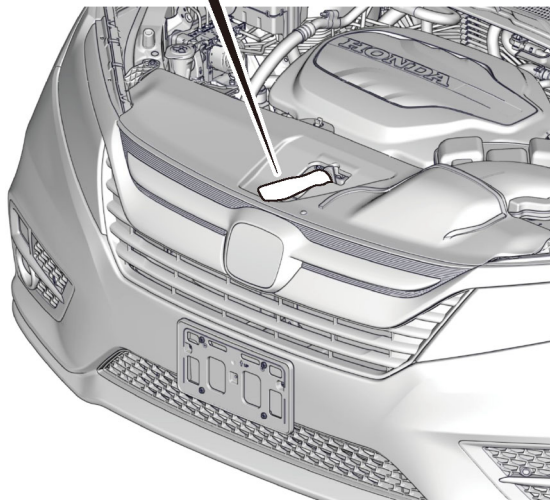
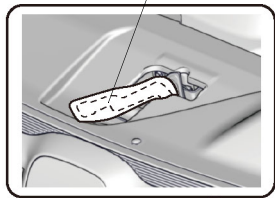
**Customer Information:** The information in this installation instruction is intended for use only by skilled technicians who have the proper tools, equipment, and training to correctly and safely add equipment to your vehicle. These procedures should not be attempted by "do-it-yourselfers."

### NOTE:

- This accessory cannot be installed with Hands-Free Access Power Tailgate.
- Refer to Parts Information Bulletin (PIB) for the proper color sensors.

1. Disconnect the negative cable from the battery:
  - Wrap a shop towel around the hood latch.

**HOOD LATCH**  
(Wrap with a shop towel.)

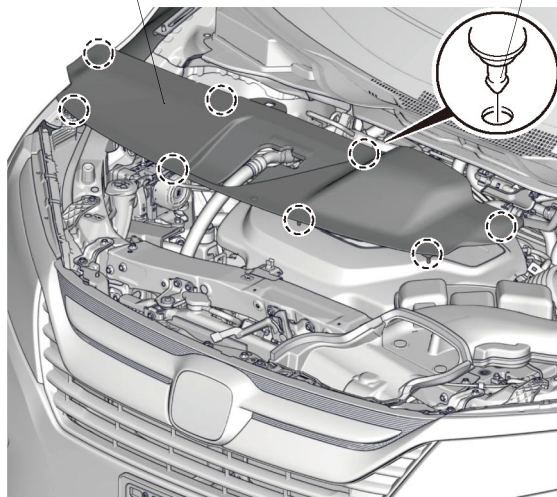


QF52702AG

- Remove the front bulkhead cover.

**FRONT BULKHEAD COVER**

**8 CLIPS**

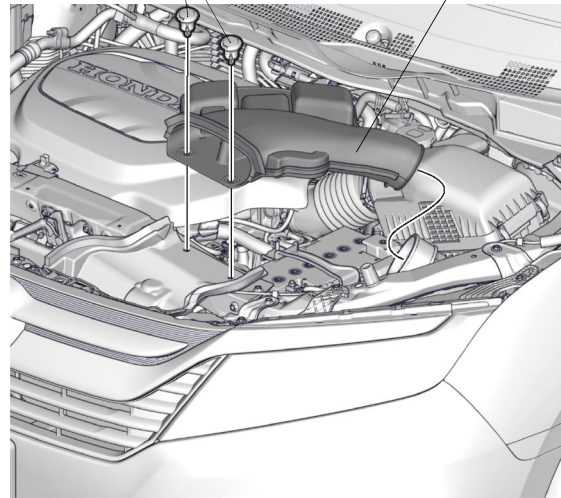


QF52703AG

- Remove the intake air tube.
- Disconnect the negative cable from the battery.

**2 CLIPS**

**INTAKE AIR TUBE**

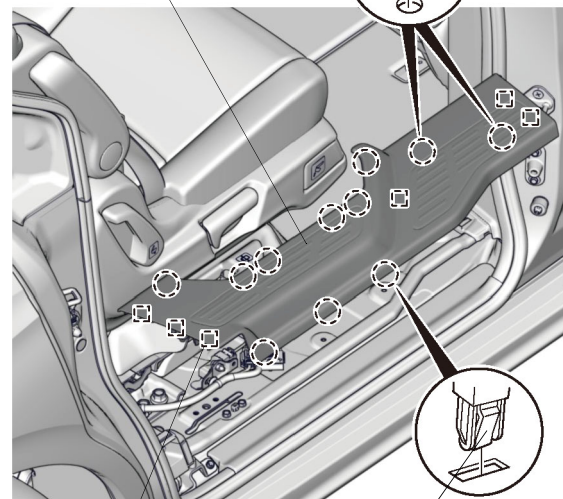


QF52704AG

2. Remove the right rear door sill trim.

**RIGHT REAR DOOR SILL TRIM**

**2 CLIPS**



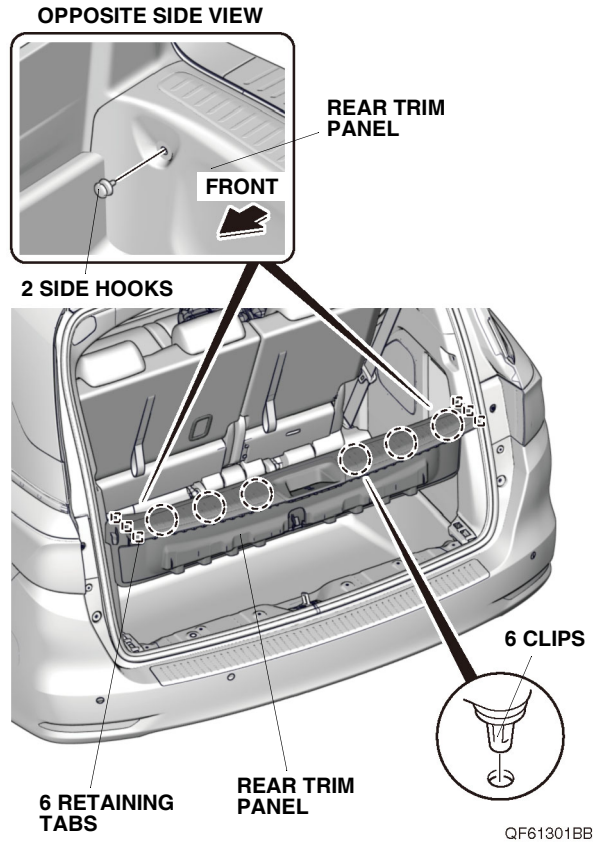
**6 RETAINING TABS**

**9 CLIPS**

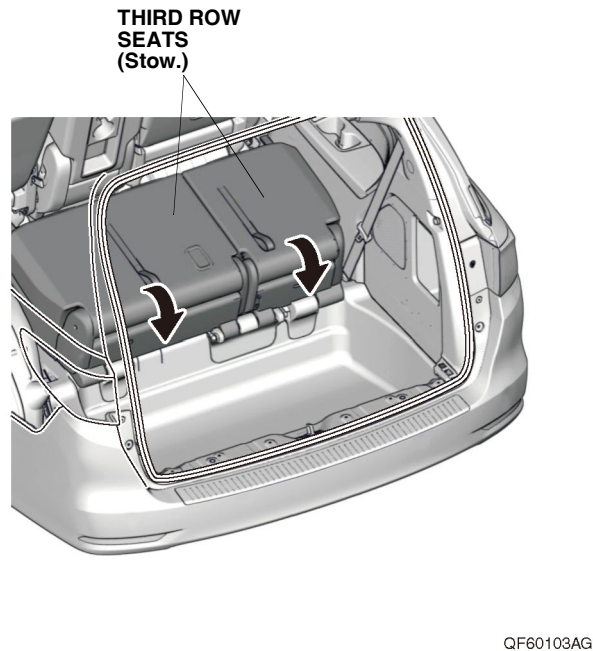
QF53004AG



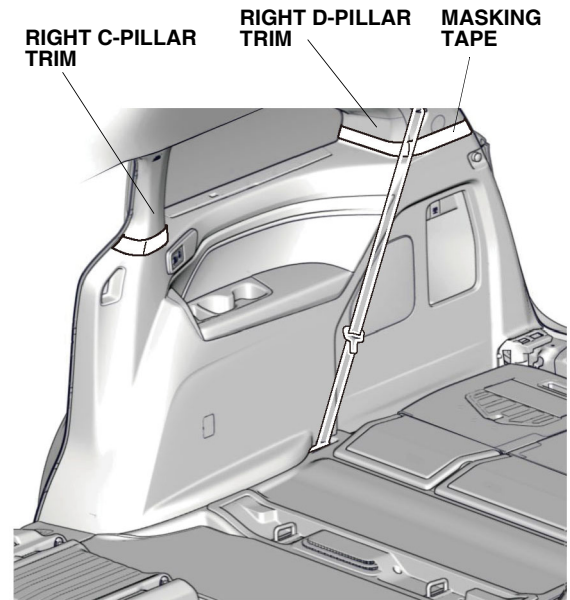
3. Remove the rear trim panel.



4. Stow the third row seats.

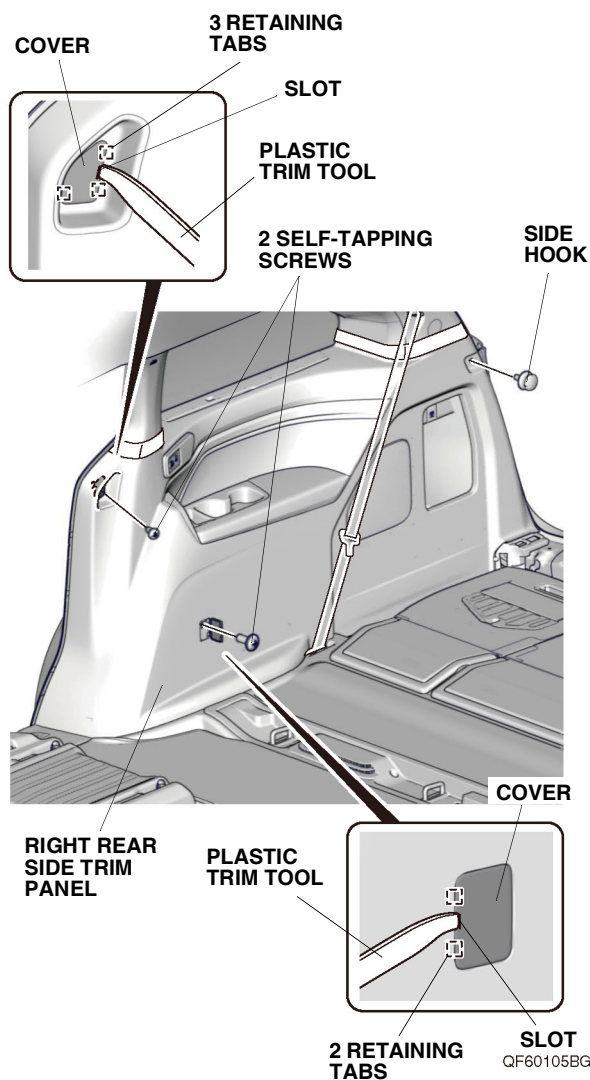


5. Apply masking tape to the right C-pillar trim and right D-pillar trim as shown.



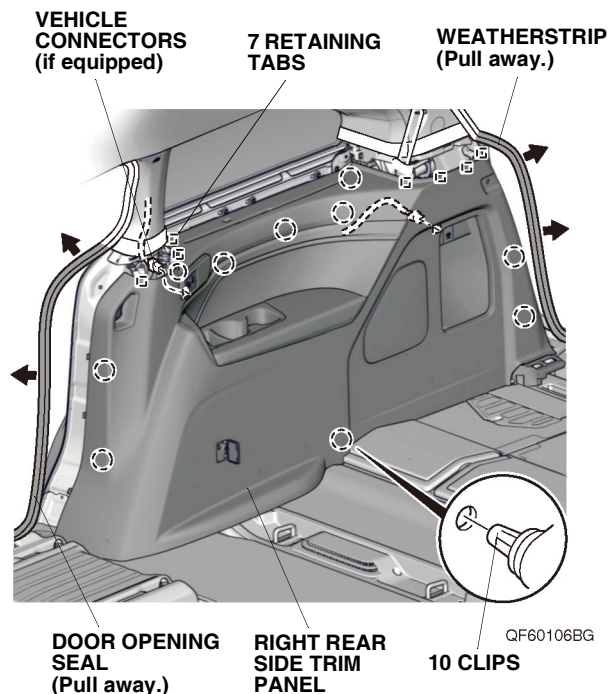
QF60104BG

6. Using the plastic trim tool, open the two covers and remove the two self-tapping screws.

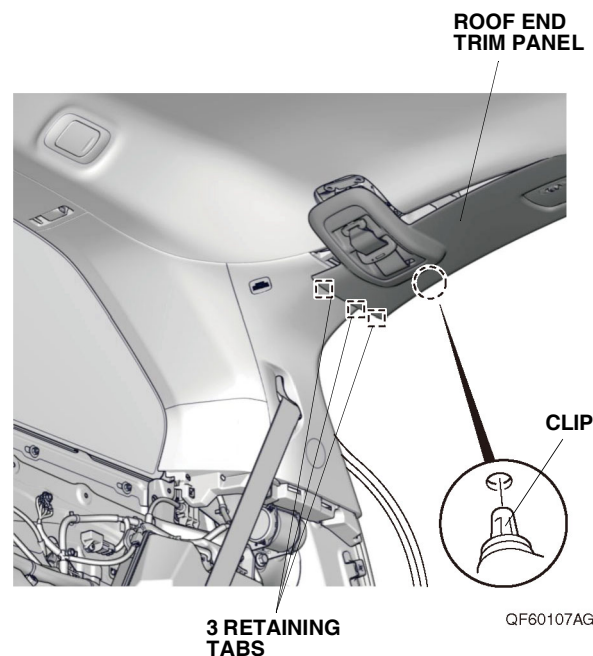


7. Remove the side hook from the right rear side trim panel.

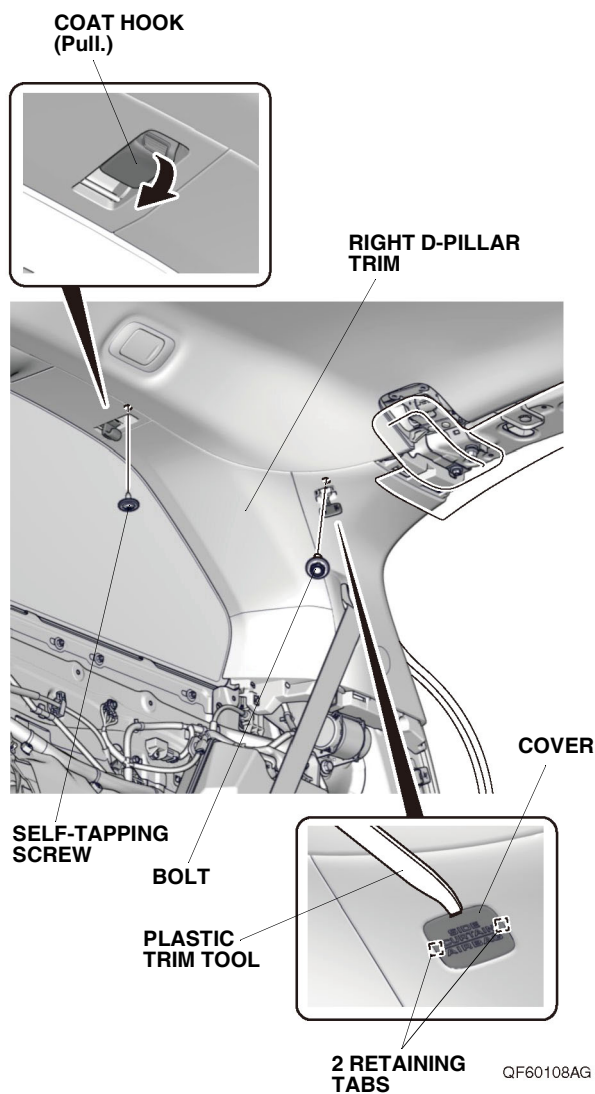
8. Pull away the door opening seal and weatherstrip from around the right rear side trim panel. Remove the right rear side trim panel, and unplug the vehicle connectors (if equipped).



9. Release the roof end trim panel.  
NOTE: Do not damage the roof end trim panel.

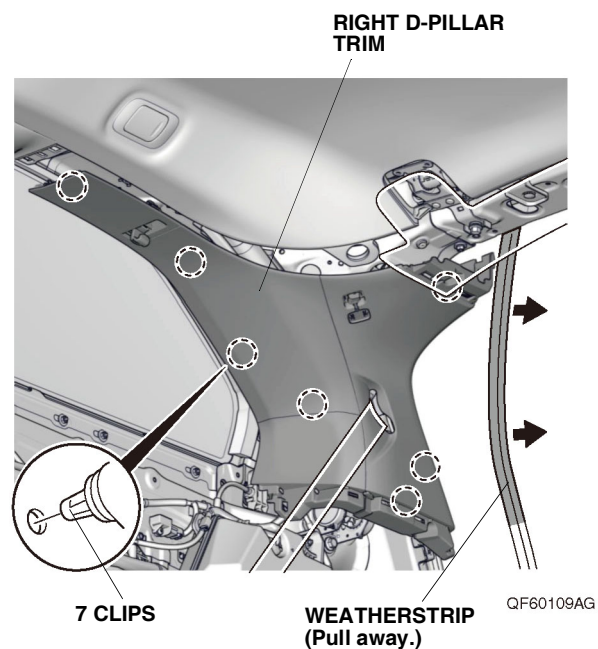


10. Pull the coat hook, and remove the self-tapping screw.

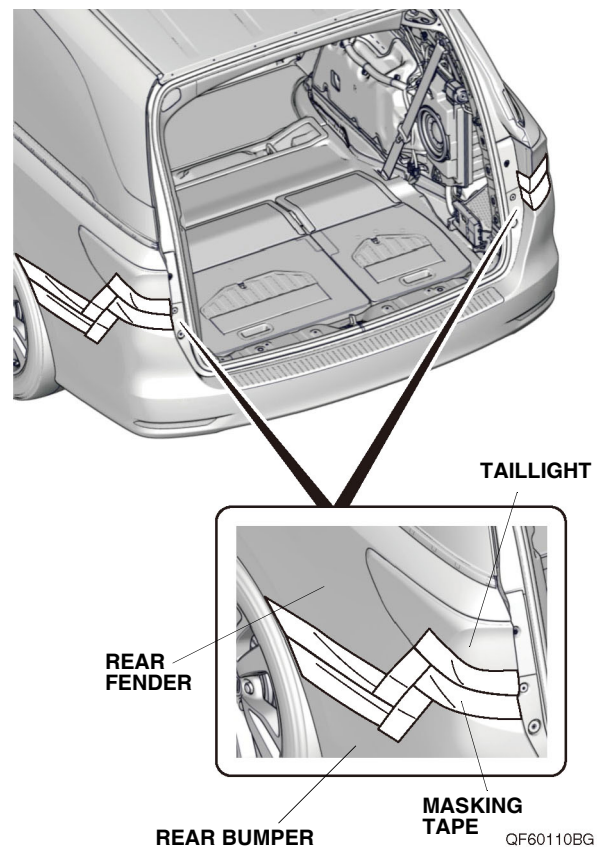


11. Using the plastic trim tool, open the cover and remove the bolt.

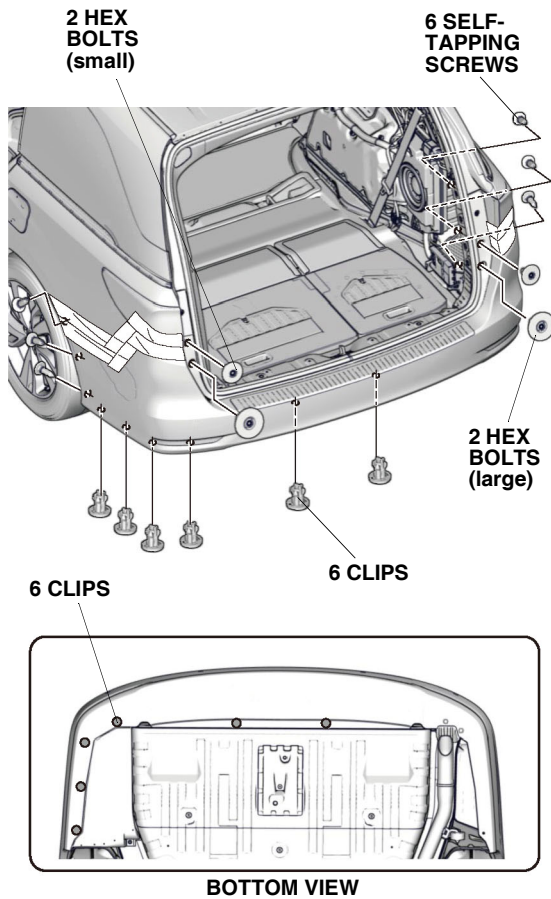
12. Pull away the weatherstrip from around the right D-pillar trim. Remove the right D-pillar trim.



13. Remove the rear bumper:
- Apply masking tape as shown.

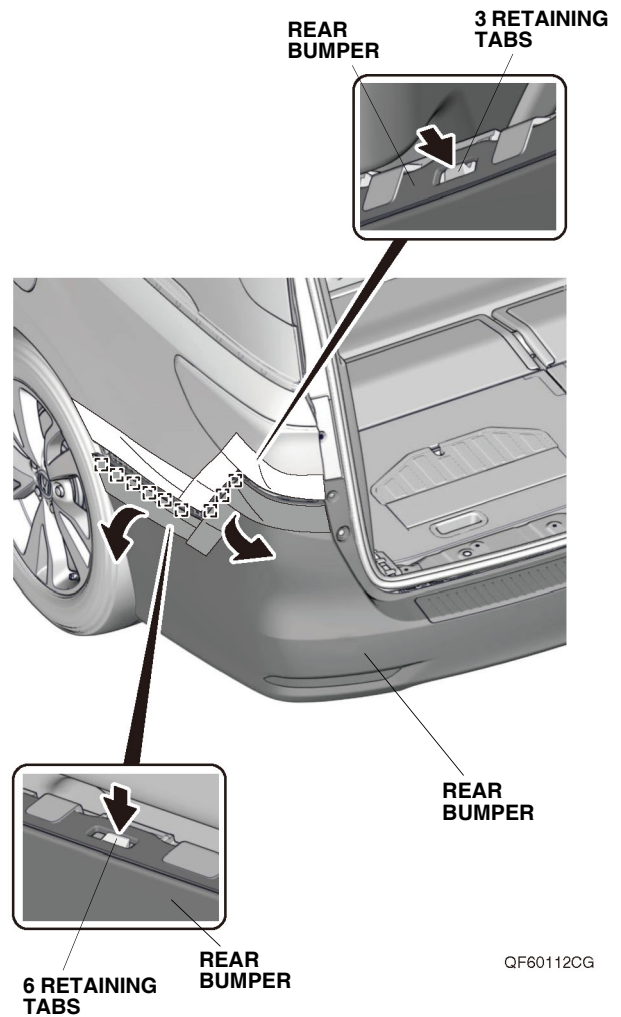


- Remove the six self-tapping screws, six clips, two large hex bolts, and two small hex bolts as shown.



QF60111BG

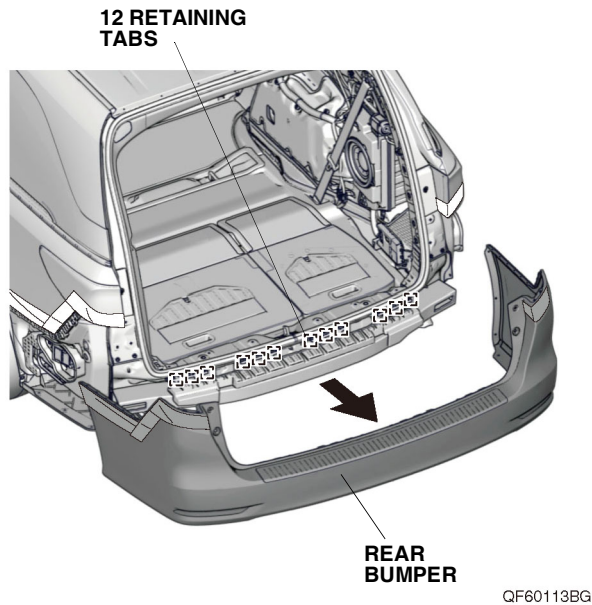
- With the help of an assistant, release the nine retaining tabs on each side.



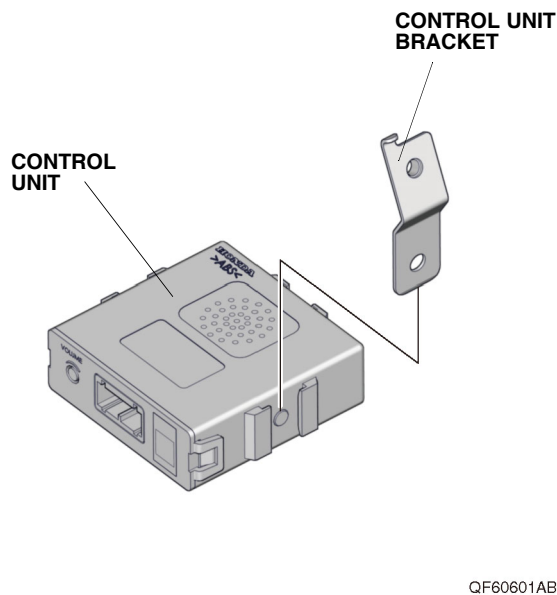
QF60112CG



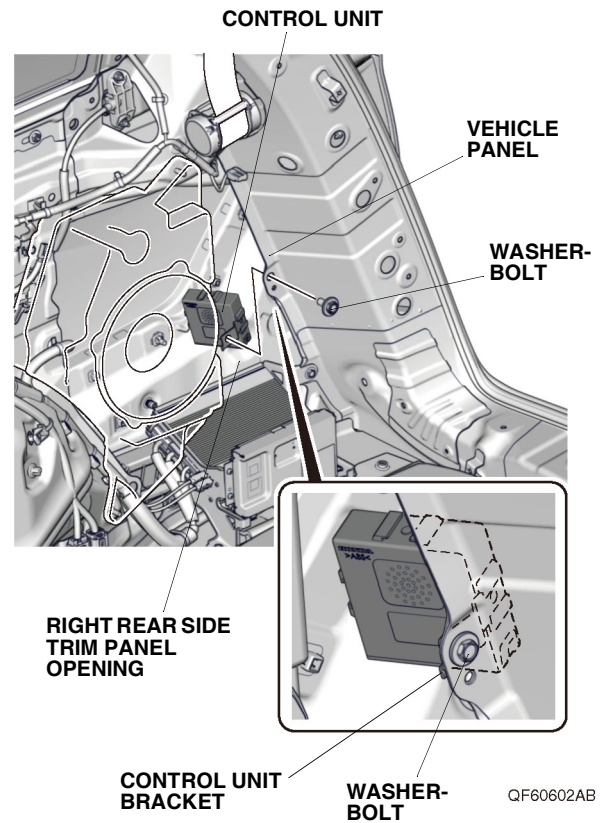
- With the help of an assistant, remove the rear bumper.
- Place the rear bumper on a blanket.



14. Install the control unit bracket on the control unit.

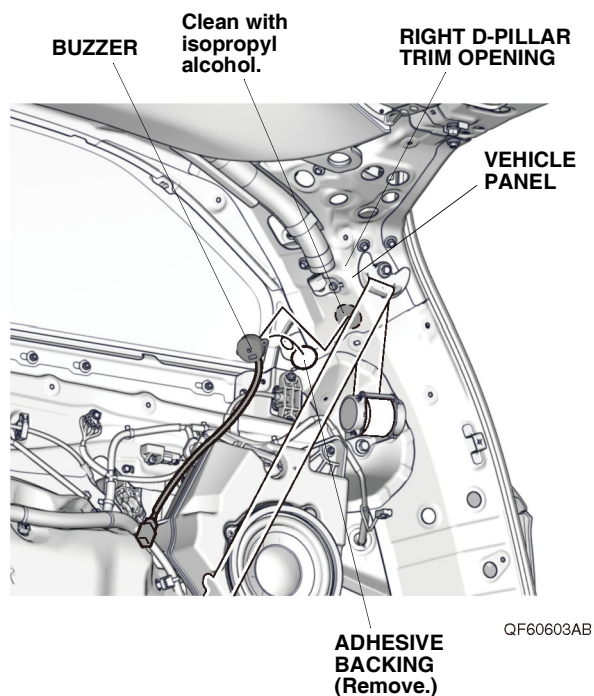


15. Install the control unit to the vehicle panel with one washer-bolt.





16. Using isopropyl alcohol on a shop towel, thoroughly clean the vehicle panel where the buzzer will attach.

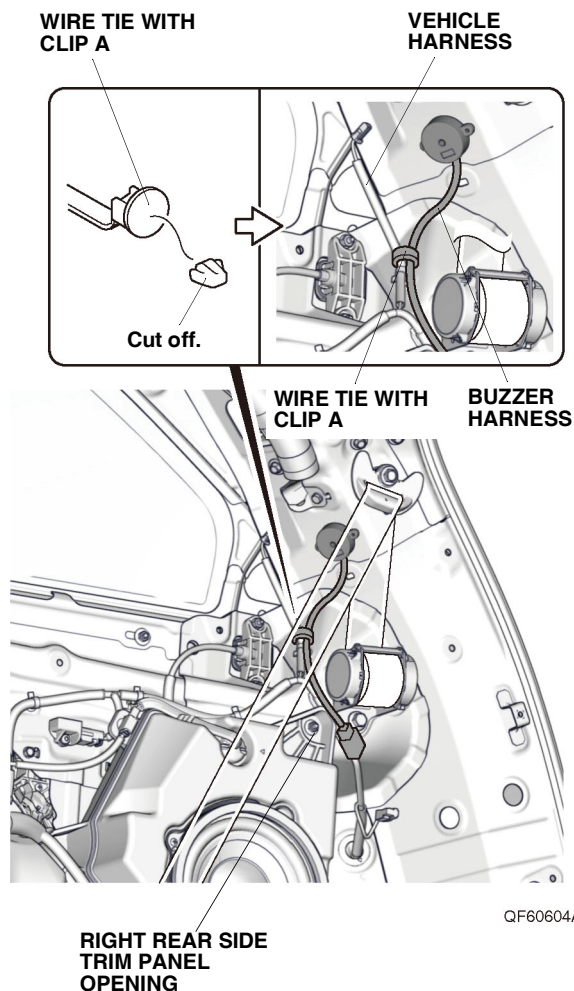


17. Remove the adhesive backing from the buzzer, and attach the buzzer to the vehicle panel as shown.

If the vehicle harness is installed in the area shown, continue with step 18; otherwise, go to step 20.

## With vehicle harness

18. Using diagonal cutters, cut the clip portion off of one wire tie with clip A.

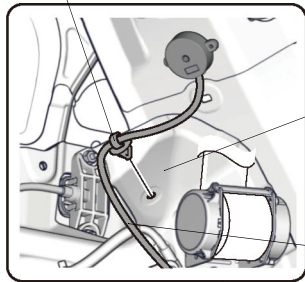


19. Secure the buzzer harness to the vehicle harness with that wire tie. Go to step 21.

## Without vehicle harness

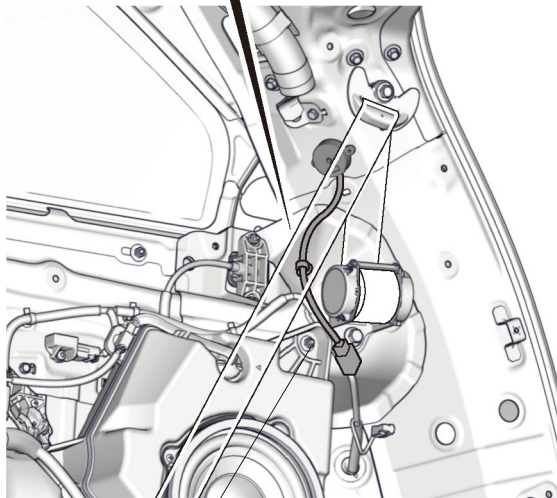
20. Secure the buzzer harness to the vehicle panel with one wire tie with clip A.

WIRE TIE WITH  
CLIP A



VEHICLE  
PANEL

BUZZER  
HARNESS

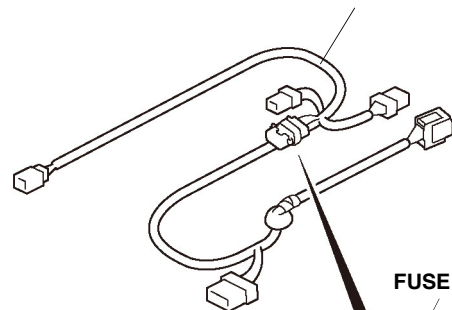


RIGHT REAR SIDE  
TRIM PANEL  
OPENING

QF60605AB

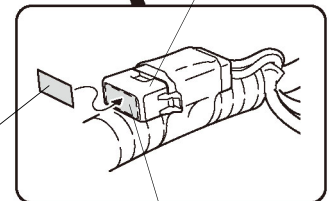
21. Using isopropyl alcohol on a shop towel, thoroughly clean the fuse case where the fuse label will attach. Attach the fuse label (2A REAR SENSOR) to the fuse case on the backup sensor harness.

BACKUP SENSOR  
HARNESS



FUSE CASE

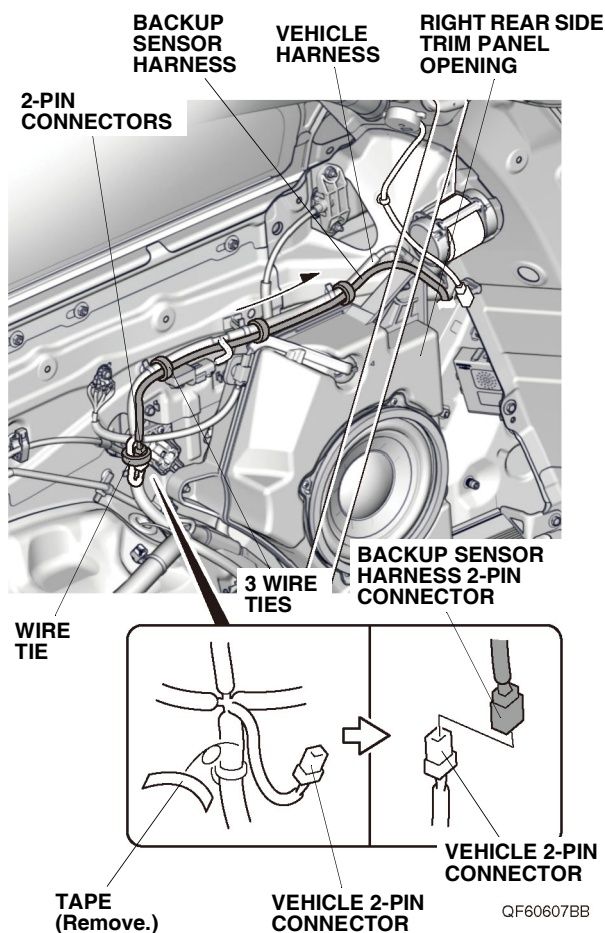
FUSE LABEL  
(2A REAR  
SENSOR)



QG22120AB

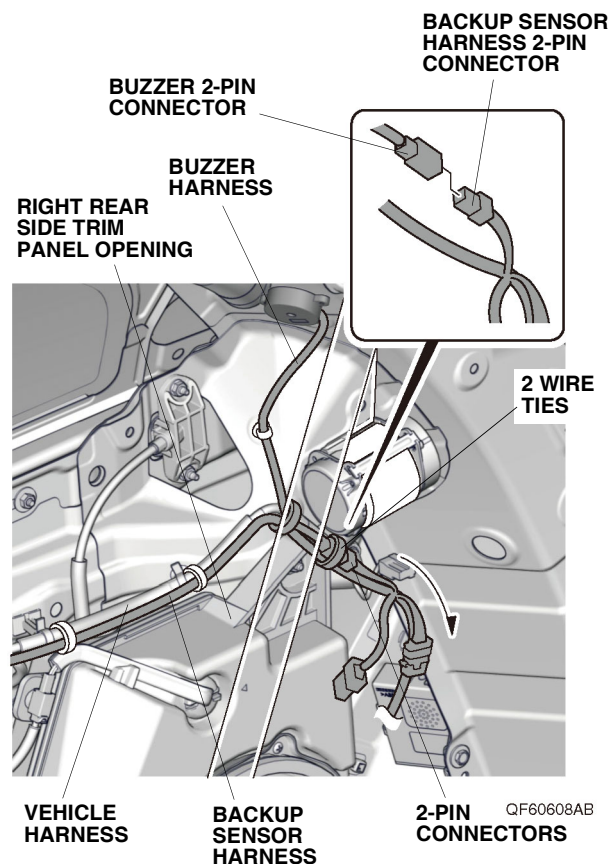
Clean with  
isopropyl alcohol.

22. Remove the tape to free the vehicle 2-pin connector. Plug the vehicle 2-pin connector into the backup sensor harness 2-pin connector, and secure the 2-pin connectors to the vehicle harness with one wire tie.



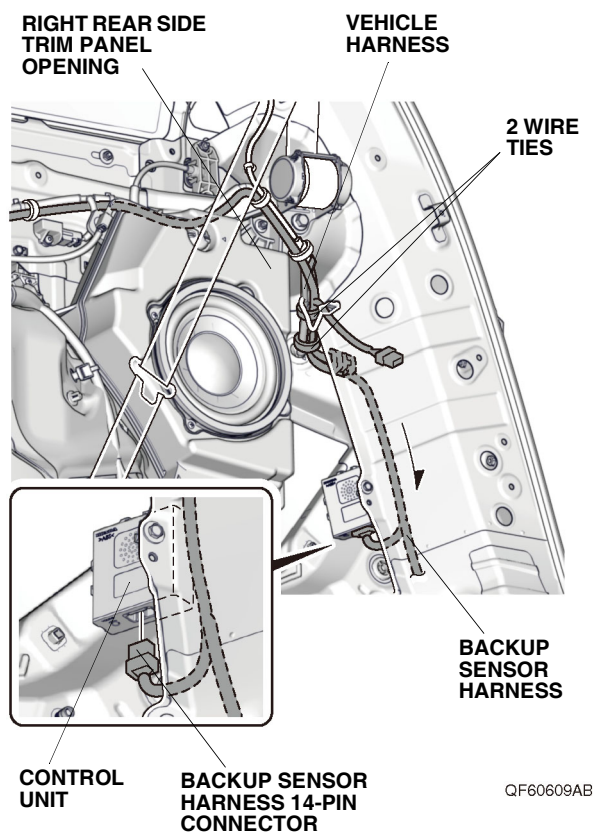
23. Route the backup sensor harness along the vehicle harness, and secure it to the vehicle harness with three wire ties.

24. Plug the backup sensor harness 2-pin connector into the buzzer 2-pin connector.



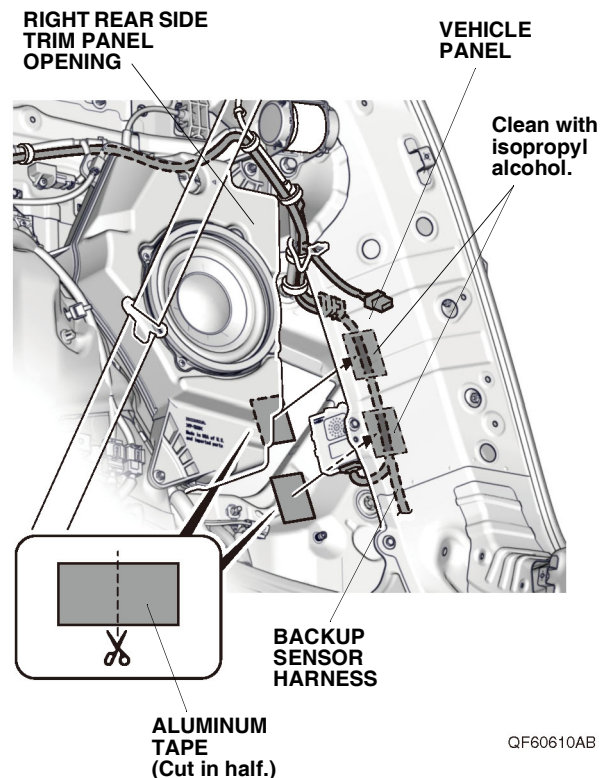
25. Secure the 2-pin connectors, backup sensor harness, and buzzer harness to the vehicle harness with two wire ties.

26. Route the backup sensor harness as shown. Plug the backup sensor harness 14-pin connector into the control unit.



27. Secure the backup sensor harness to the vehicle harness with two wire ties.

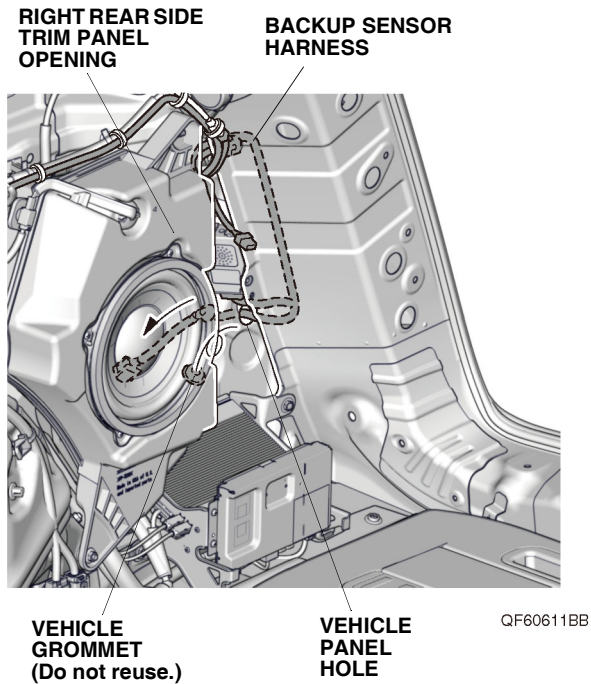
28. Using isopropyl alcohol on a shop towel, thoroughly clean the vehicle panel where the two pieces of aluminum tape will attach.



29. Using scissors, cut one piece of aluminum tape in half, and secure the backup sensor harness to the vehicle panel with two halves of aluminum tape as shown.



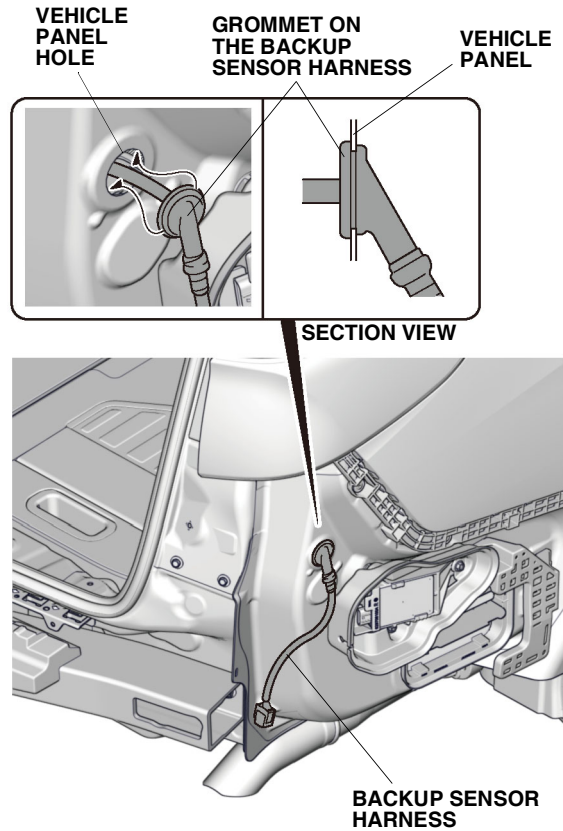
30. Remove the vehicle grommet. Route the backup sensor harness through the vehicle panel hole as shown.



31. Secure the grommet on the backup sensor harness into the vehicle panel hole.

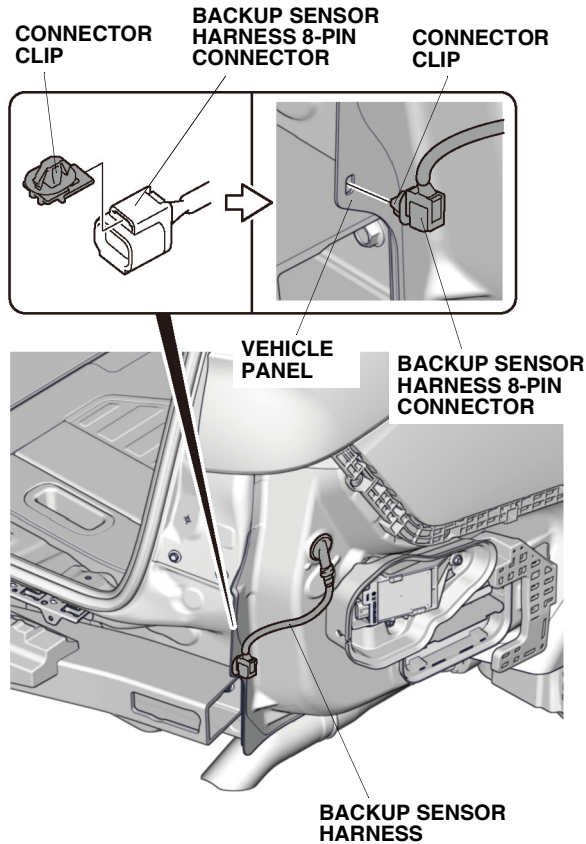
NOTE:

- Install the backup sensor harness by holding the grommet.
- Make sure to check that the grommet is secured properly.





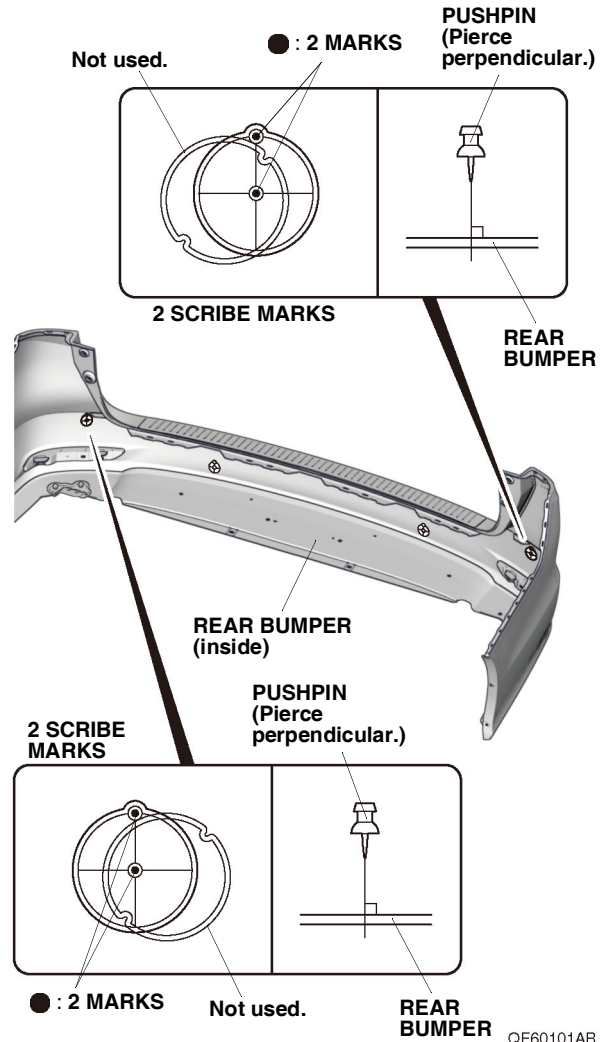
32. Install the connector clip on the backup sensor harness 8-pin connector, and secure the backup sensor harness 8-pin connector to the vehicle panel.



QF60613AB

33. Mark the inside of the rear bumper:

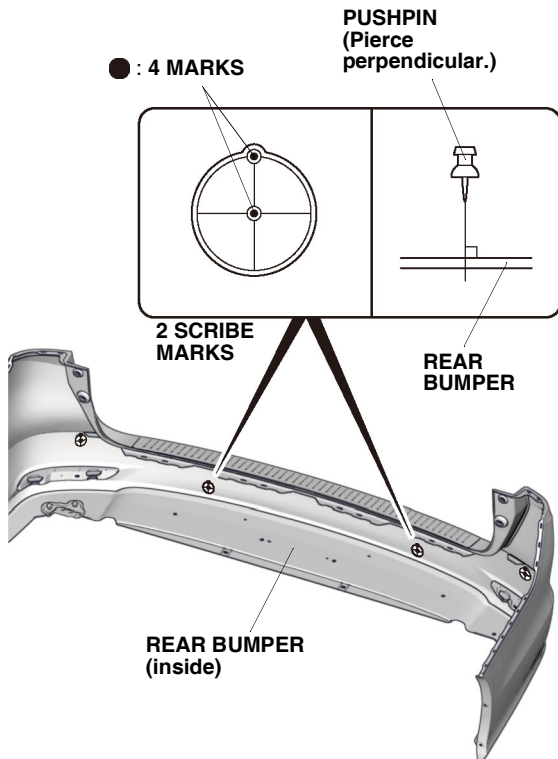
- Locate the four scribe marks on the inside of the rear bumper at the left corner and right corner.
  - Using a pushpin, pierce the rear bumper at the top and center of the two scribe marks.
- NOTE: There are several markings on the inside of the rear bumper. Before piercing the rear bumper, verify you have the correct locations. Make sure to pierce the scribe marks perpendicular to the rear bumper.



QF60101AB

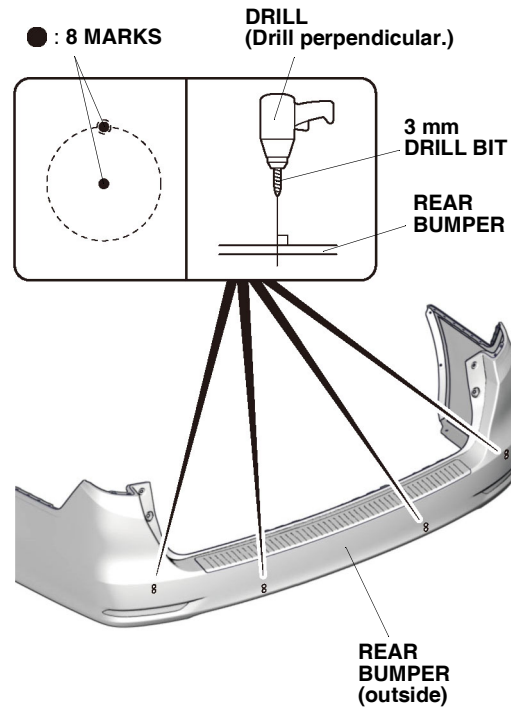
34. Mark the inside of the rear bumper:

- Locate the two scribe marks on the inside of the rear bumper at the left center and right center.
- Using a pushpin, pierce the rear bumper at the top and center of the two scribe marks.  
NOTE: Make sure to pierce the scribe marks perpendicular to the rear bumper.



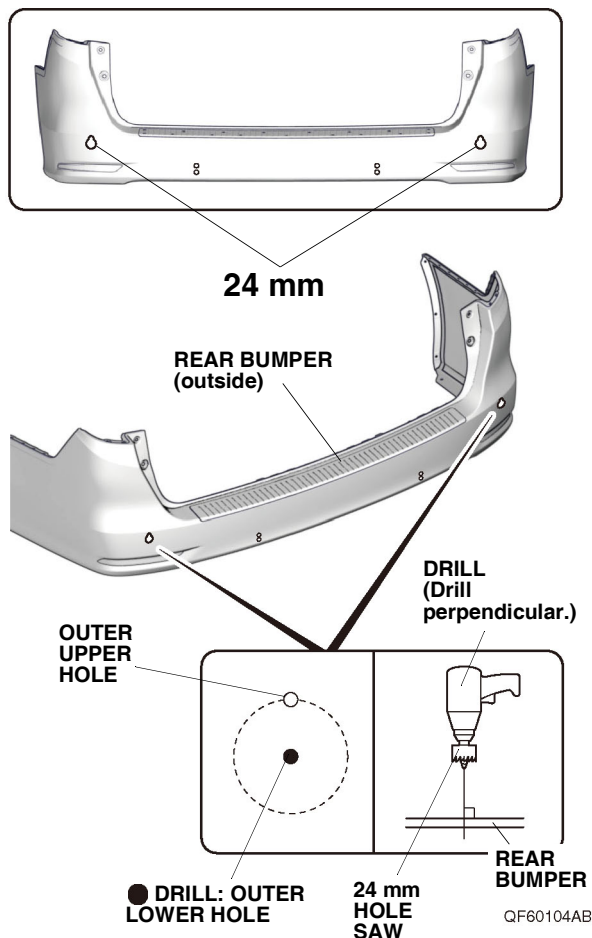
QF60102AB

35. While wearing eye protection, drill the eight pierced marks with a 3 mm drill bit from the painted side of the rear bumper.  
NOTE: Make sure to drill perpendicular to the rear bumper.

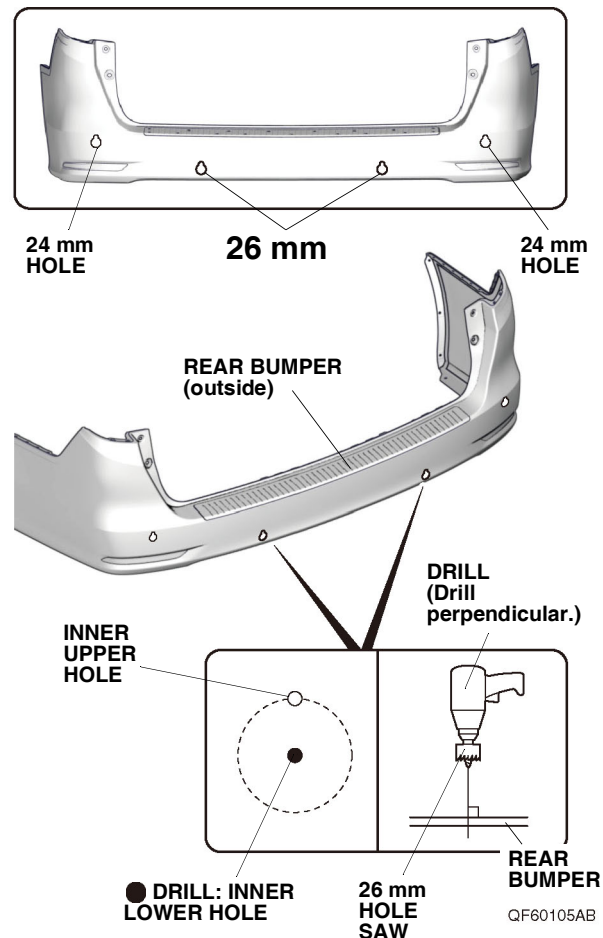


QF60103AB

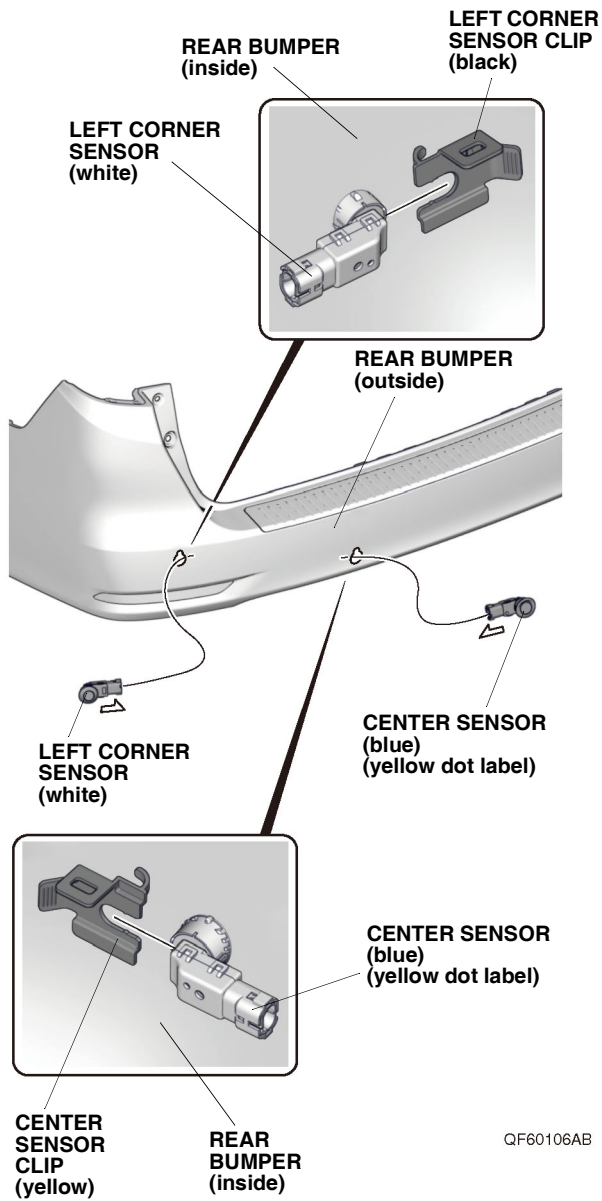
36. While wearing eye protection and drilling from painted side of the rear bumper, enlarge the left outer lower 3 mm hole and right outer lower 3 mm hole to 24 mm using a 24 mm hole saw.  
NOTE: Make sure to drill perpendicular to the rear bumper. Remove any burrs.



37. While wearing eye protection and drilling from painted side of the rear bumper, enlarge the two inner lower 3 mm holes to 26 mm using a 26 mm hole saw.  
NOTE: Make sure to drill perpendicular to the rear bumper. Remove any burrs.

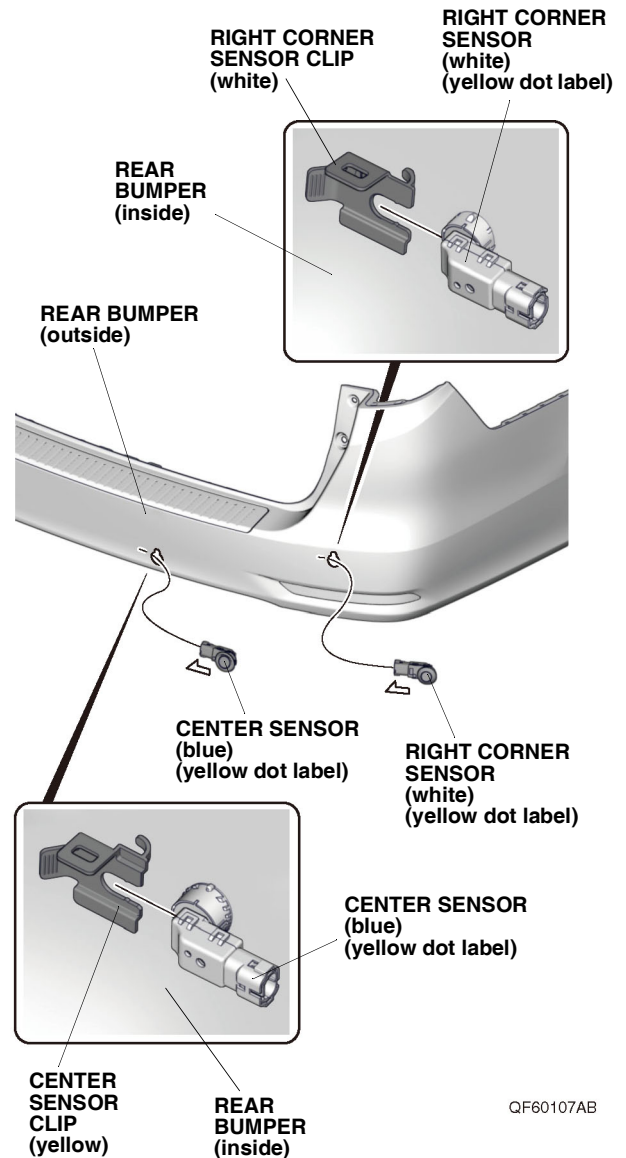


38. Insert the left corner sensor (white) and center sensor (blue) to the rear bumper.



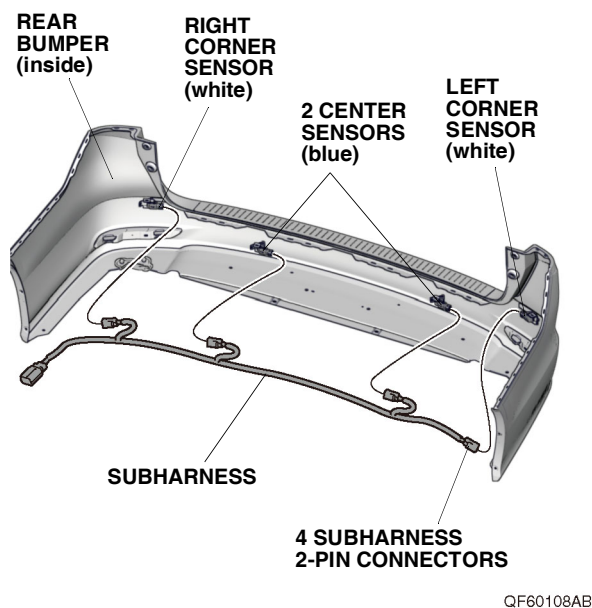
39. Secure the left corner sensor (white) and center sensor (blue) with the left corner sensor clip (black) and center sensor clip (yellow) as shown.

40. Insert the right corner sensor (white) and center sensor (blue) to the rear bumper.

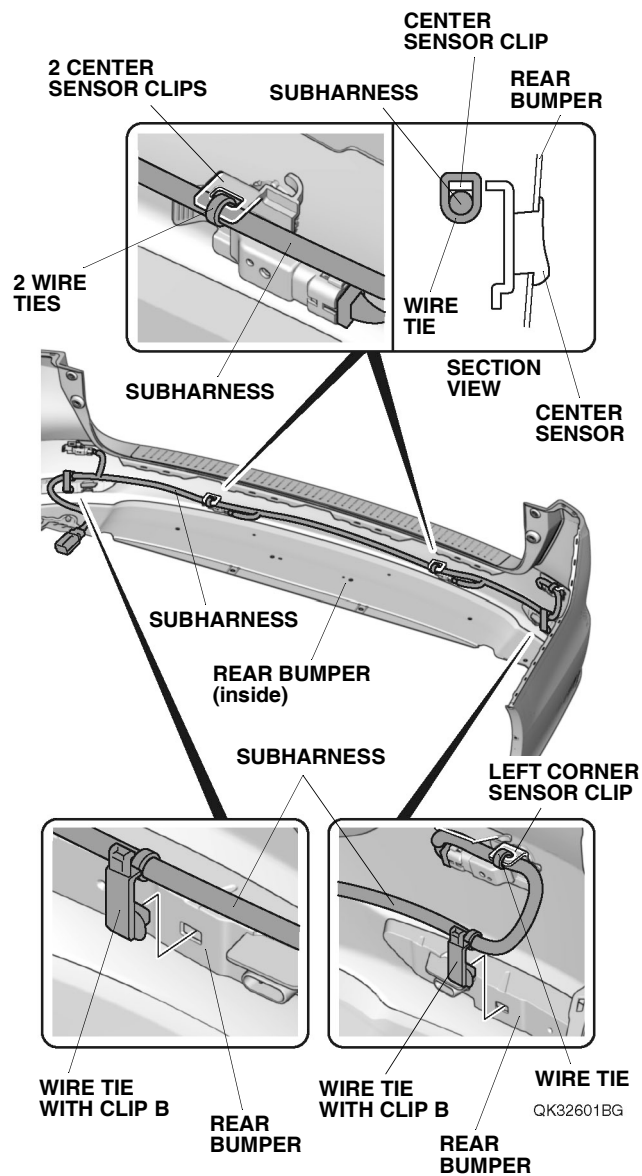


41. Secure the right corner sensor (white) and center sensor (blue) with the right corner sensor clip (white) and center sensor clip (yellow) as shown.

42. Plug four subharness 2-pin connectors to the center sensors (blue) and corner sensors (white).

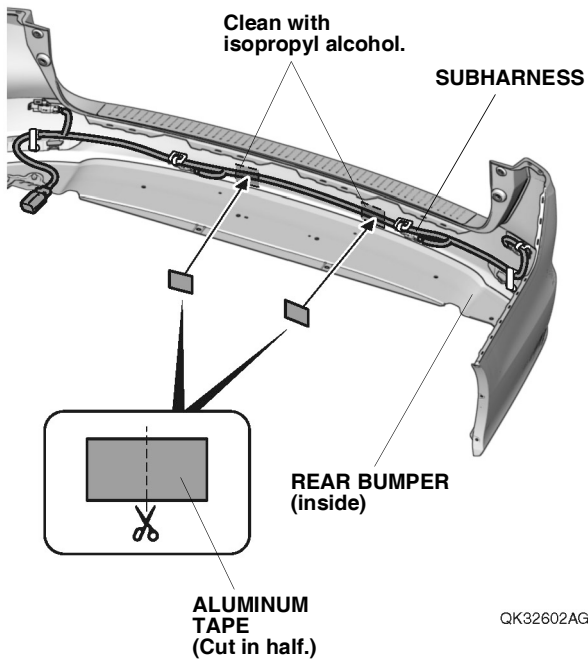


43. Secure the subharness to the rear bumper, left corner sensor clip, and two center sensor clips with three wire ties and two wire ties clip B as shown.



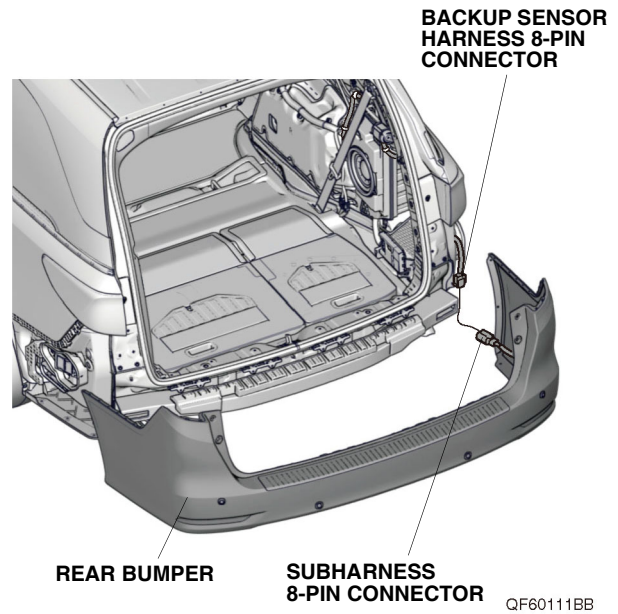


44. Using isopropyl alcohol on a shop towel, thoroughly clean the rear bumper where the aluminum tape will attach.

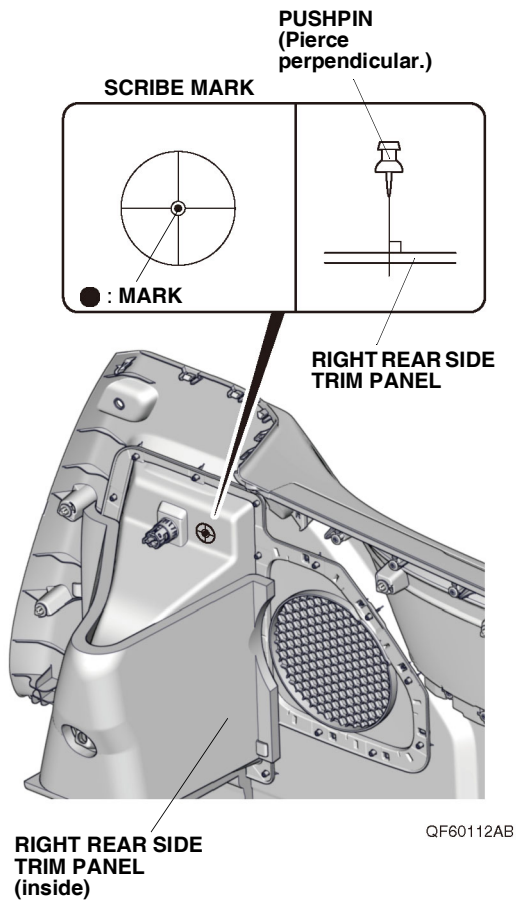


45. Using scissors, cut one piece of aluminum tape in half, and secure the subharness to the rear bumper with two halves of aluminum tape as shown.

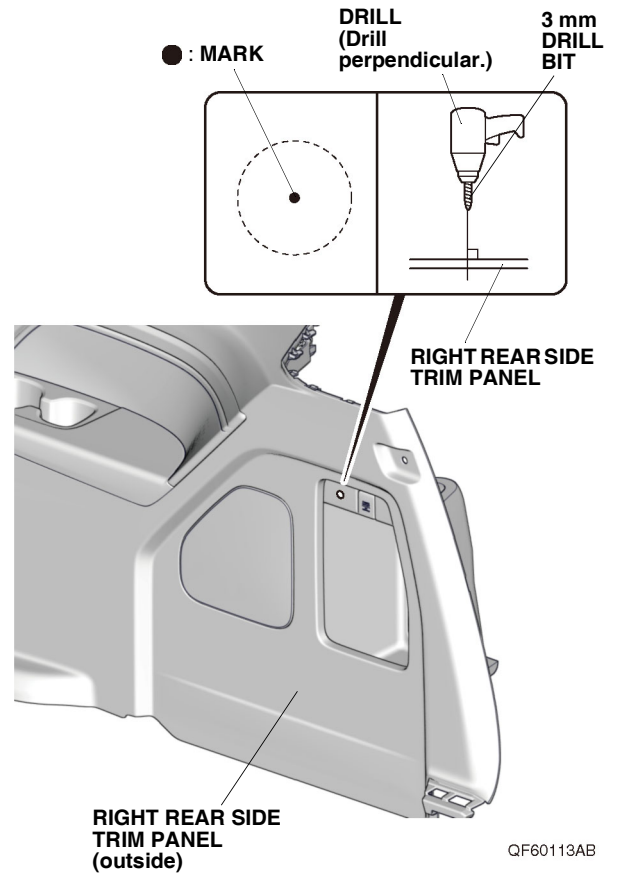
46. With the help of an assistant, bring the rear bumper close to the vehicle, and plug the subharness 8-pin connector into the backup sensor harness 8-pin connector. Install the rear bumper.



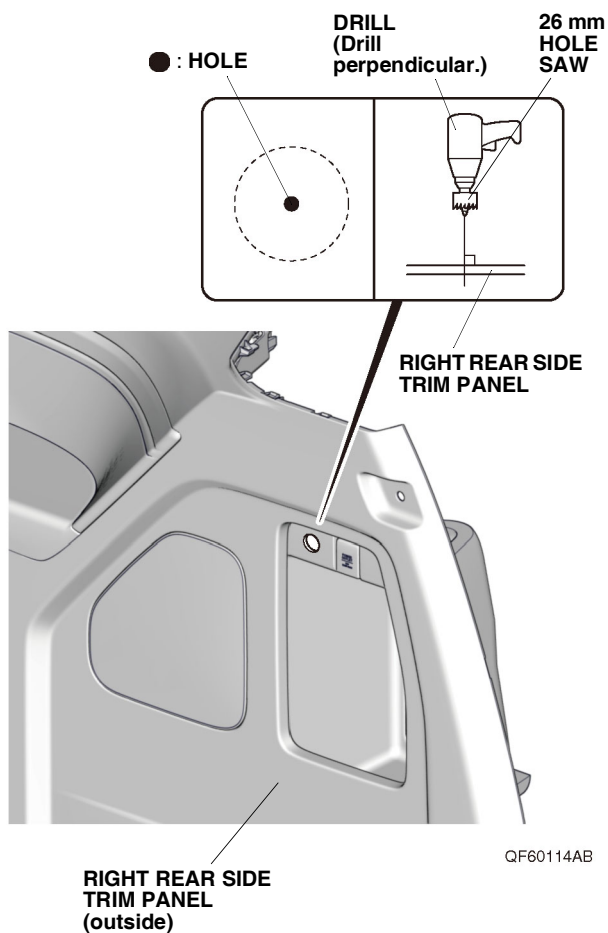
47. Using a pushpin, pierce the center of the scribe mark on the right rear side trim panel.  
NOTE: Make sure to pierce the mark perpendicular to the right rear side trim panel.



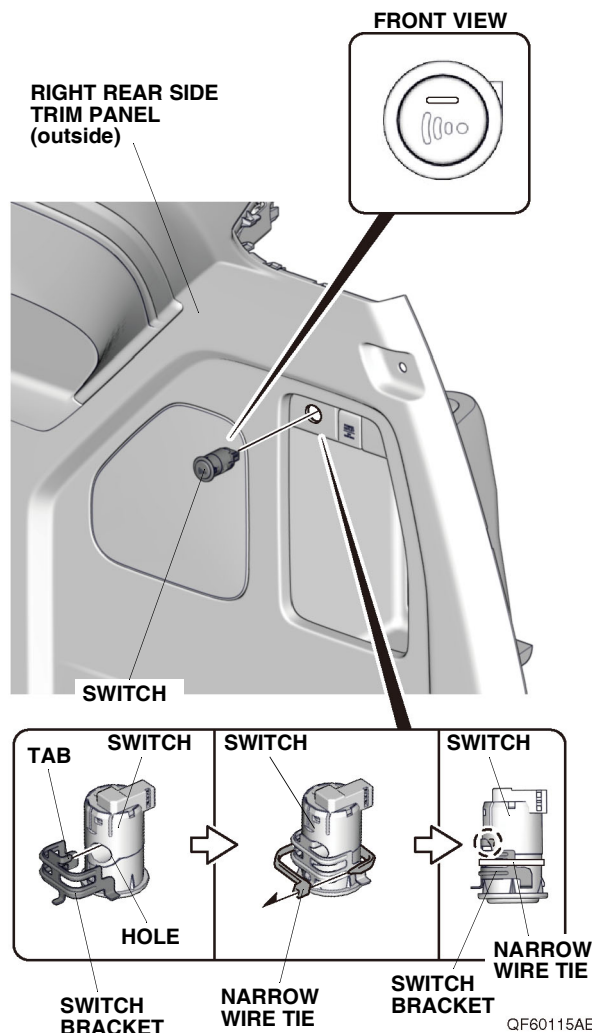
48. While wearing eye protection, drill the pierced mark on the right rear side trim panel with a 3 mm drill bit.  
NOTE: Make sure to drill perpendicular to the right rear side trim panel.



49. While wearing eye protection, enlarge the 3 mm hole to 26 mm using a 26 mm hole saw. Remove any burrs.  
NOTE: Make sure to drill perpendicular to the right rear side trim panel.

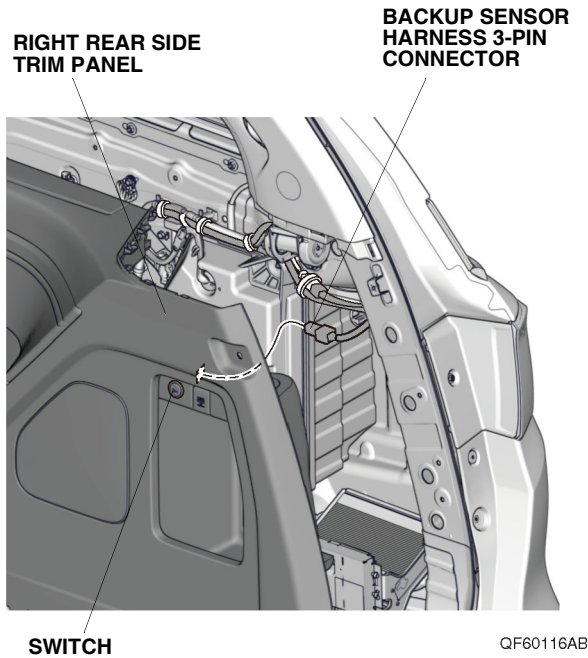


50. Install the switch into the 26 mm hole in the right rear side trim panel.  
NOTE: Make sure to install the switch in the correct orientation.



51. Line up the tab on the switch bracket with the hole on the switch and secure the switch bracket to the switch with one narrow wire tie.  
NOTE: Firmly press the switch bracket against the right rear side trim panel, and make sure that there is no clearance between the switch and right rear side trim panel.

52. Install the right D-pillar trim and roof end trim panel.



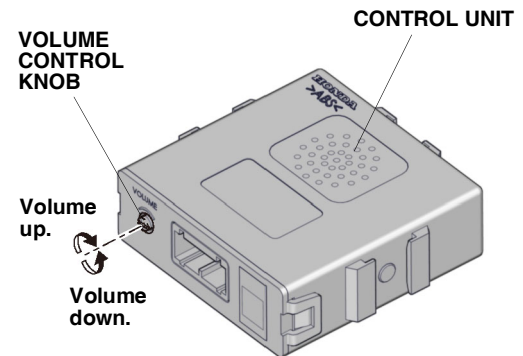
53. Bring the right rear side trim panel into position. Plug the backup sensor harness 3-pin connector into the switch.
54. Install the right rear side trim panel.
55. Check that all wire harnesses are routed properly and that all connectors are plugged in.
56. Install all removed parts except for the front bulkhead cover and the intake air tube.
57. Connect the negative cable to the battery.
58. Install the front bulkhead cover and the intake air tube.
59. Press and hold the audio unit power button for 2 seconds to restore the audio and navi (if equipped) system functions.
60. Set the clock on vehicles without navigation.
61. If necessary, restore the systems back to normal operation as described in the service information.

## Check the Operation of the Backup Sensors

62. Check that the backup sensors work properly as described in the accessory user's information manual with this kit.

## Adjust the Volume Control

The factory setting is maximum volume. After confirming the operation, turn the volume control knob to the appropriate level, using a small flat-tip screwdriver. NOTE: Do not force the adjuster as it could damage the unit.



QF60117AB