



HONDA INSTALLATION INSTRUCTIONS

Accessory

REAR BUMPER APPLIQUE
P/N 08P48-TXM-100

Application

2020 INSIGHT

Publications No.

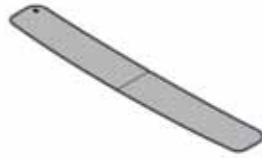
VERSION 1

Issue Date

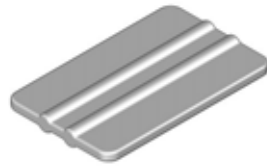
JULY 2019

PARTS LIST

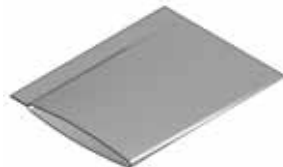
Rear bumper applique



Applicator



Felt sleeve



Alcohol wipe



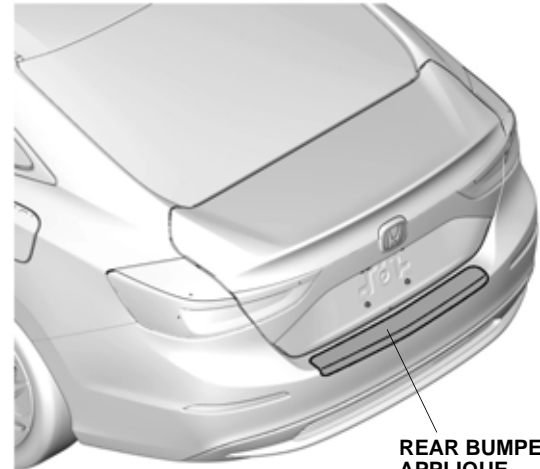
TOOLS AND SUPPLIES REQUIRED

Shop towel

Spray bottle

3M Protective tape application solution (P/N 08712-0008)

Illustration of the Rear Bumper Applique Installed on the Vehicle



REAR BUMPER
APPLIQUE

QG00401AR

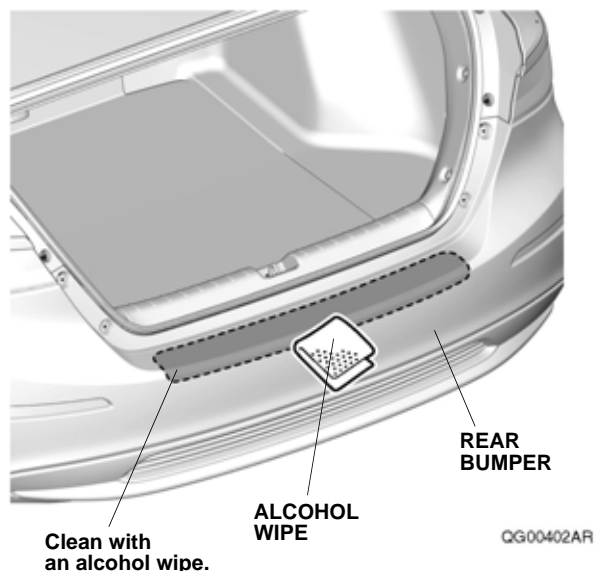
INSTALLATION

Customer Information: The information in this installation instruction is intended for use only by skilled technicians who have the proper tools, equipment, and training to correctly and safely add equipment to your vehicle. These procedures should not be attempted by "do-it-yourselfers."

NOTE:

- Be careful not to damage the body paint finish.
- This rear bumper applique kit should be installed only if the ambient air temperature is 15°C (60°F) or above.
- To allow the adhesive to cure, do not wash the vehicle for 24 hours. Make sure the customer is aware of this.

1. Open the trunk lid. Using the alcohol wipe, thoroughly clean the area where the rear bumper applique will attach.

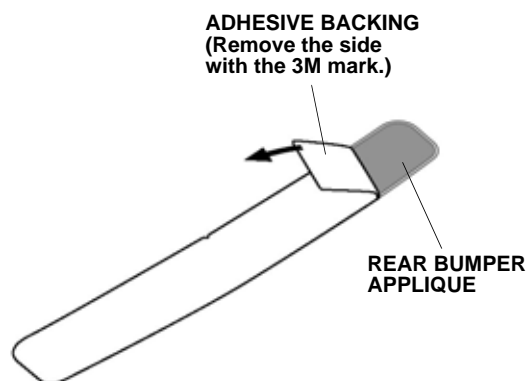


2. Using a spray bottle with 3M protective tape application solution, spray the area where the rear bumper applique will attach. Spray some solution on your hands.

Spray with the 3M protective tape application solution.

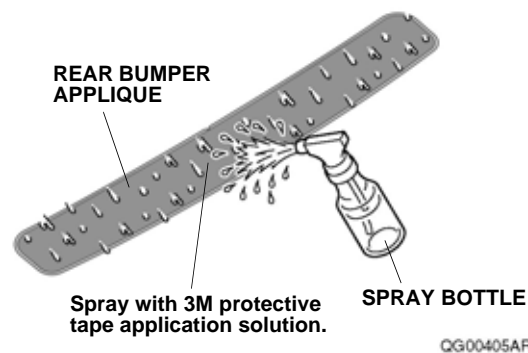


3. Remove the adhesive backing from the side of the rear bumper applique with the 3M mark.

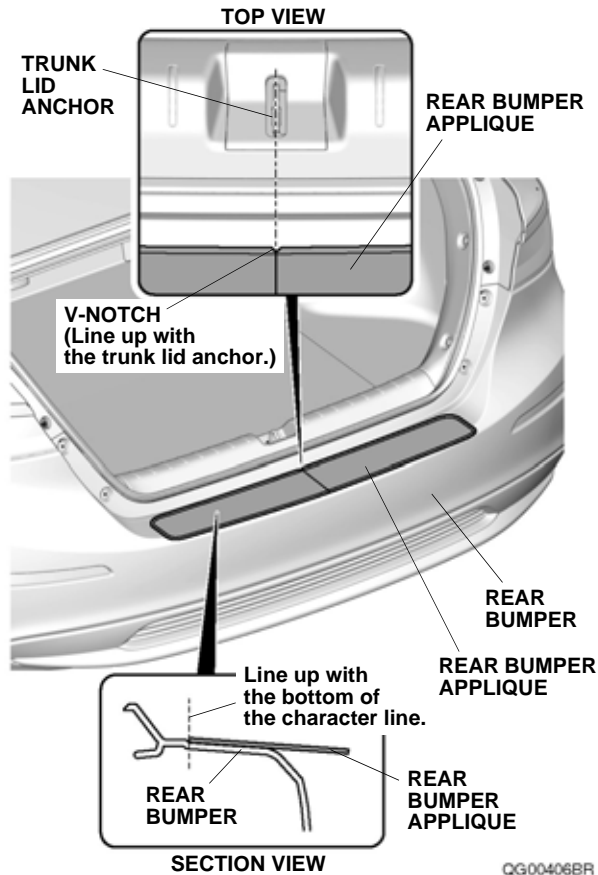


QG00404AR

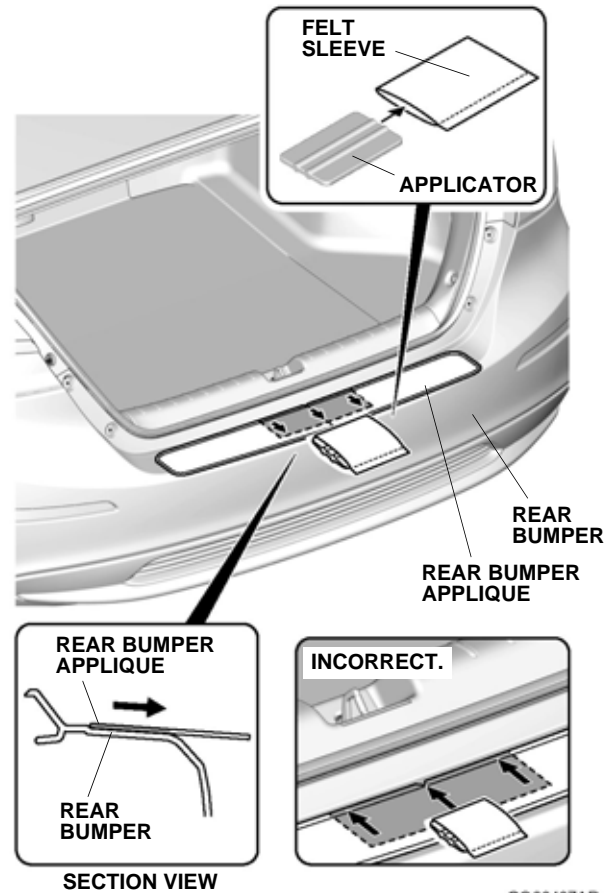
4. Spray the rear bumper applique with 3M protective tape application solution.



- Line up the V-notch on the rear bumper applique with the trunk lid anchor. Line up the edge of the rear bumper applique with the bottom of the character line. Smooth the rear bumper applique against the rear bumper. Do not touch the adhesive side of the rear bumper applique with your hands.

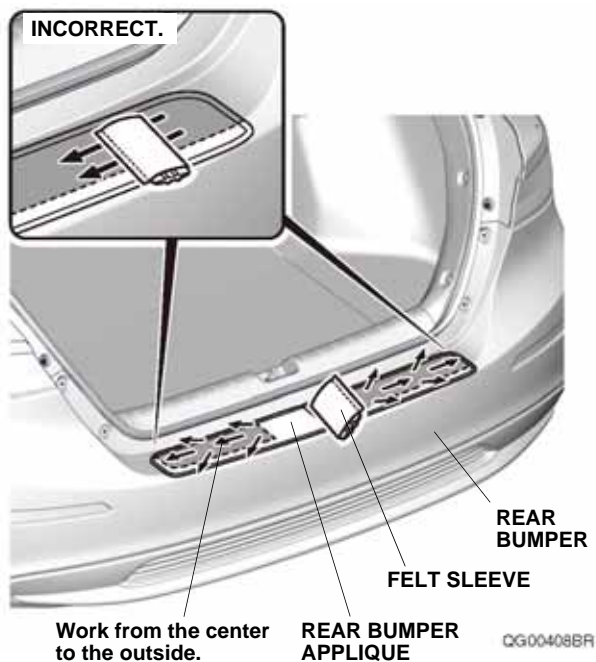


- Insert the applicator into the felt sleeve.

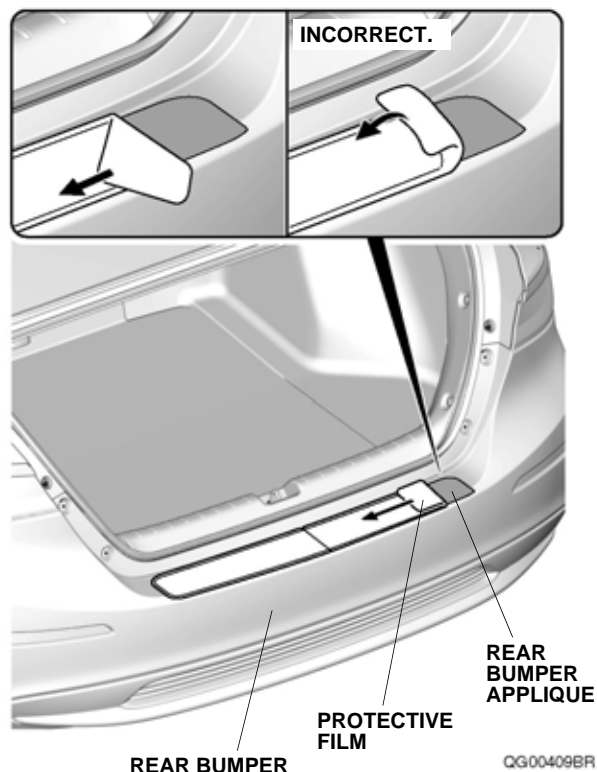


- Starting from the front and working rearward, use the felt sleeve to smooth out the center of the upper section on the rear bumper applique. Move the felt sleeve in one direction only. If you see an air bubble, stop and gently peel up that section to work out the bubble. Work slowly, and keep pressure against the rear bumper applique.

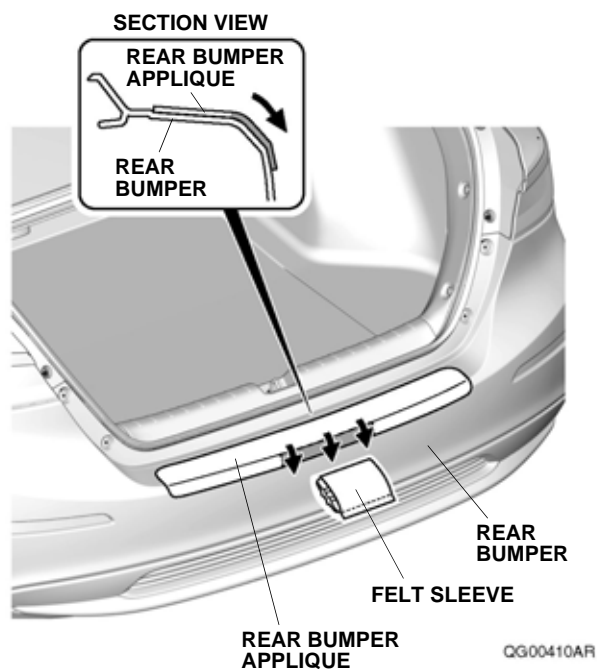
8. Starting from the center and working outward, use the felt sleeve to smooth out the left and right sides of the upper section on the rear bumper applique. Use short, firm, overlapping strokes from the center. If you see any air bubbles, stop and gently peel up that section to work out the bubble. Work slowly, and keep pressure against the rear bumper applique.



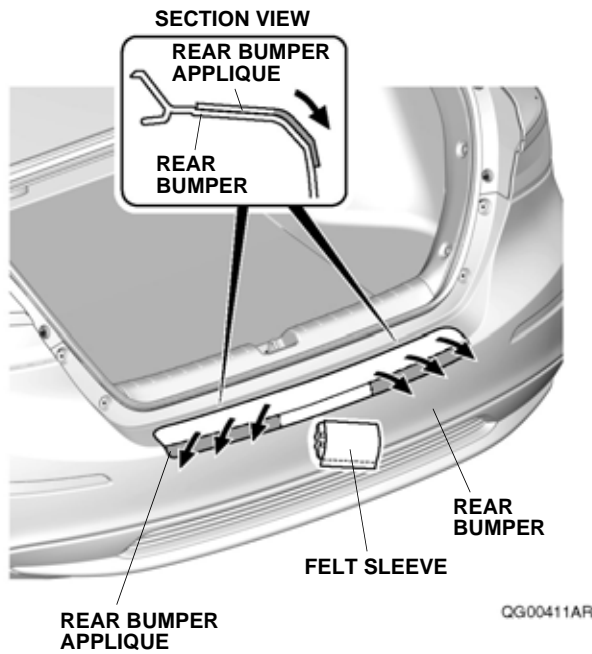
9. Slowly remove the protective film from the rear bumper applique.
NOTE: Do not pull up on the protective film.



10. Repeat step 7 at the center of the lower section on the rear bumper applique.



11. Repeat step 8 at the left and right sides of the lower section on the rear bumper applique.



12. Using a shop towel, wipe up the 3M protective tape application solution. Allow the rear bumper applique to dry thoroughly.

