



INSTALLATION INSTRUCTIONS

Accessory
REAR LOWER TRIM
 P/N 08F24-T7S-100A

Application
 2022 HR-V

Publications No.
VERSION 1
 Issue Date
JUL 2021

PARTS LIST

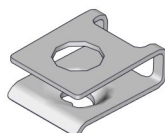
Rear lower trim



3 Clips



10 Spring nuts



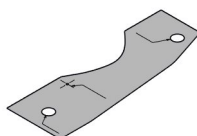
10 Self-tapping screws



Template A
 (Not used)



Template B
 (Not used)



TOOLS AND SUPPLIES REQUIRED

- Phillips screwdriver
- Stubby Phillips screwdriver
- Ratchet
- 5 mm Hex wrench
- Blanket
- Drill
- 3 mm, 6 mm, 8 mm, and 10 mm Drill bits
- Pushpin
- File
- Eye protection (face shield, safety goggles, etc.)
- Masking tape

The following tools are available through the Honda Tool and Equipment Program. On the iN, click on Service > Service Bay > Tool and Equipment Program, then enter the number under "Search." Or, call 888-424-6857.

- Trim Tool Set (T/N SOJATP2014)
- Plastic Trim Tool (T/N SILTRIMTL10)

Illustration of the Rear Lower Trim on the Vehicle



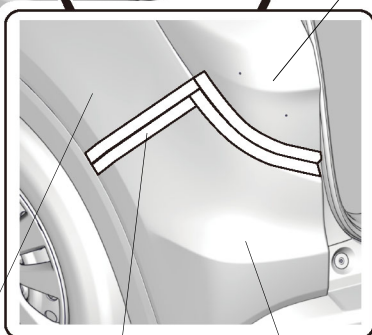
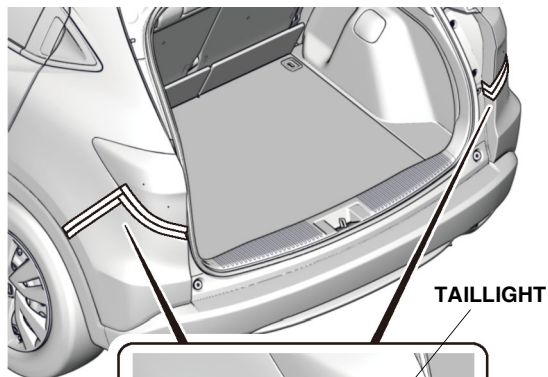
REAR LOWER TRIM

QH21602AA

INSTALLATION

Customer Information: The information in this installation instruction is intended for use only by skilled technicians who have the proper tools, equipment, and training to correctly and safely add equipment to your vehicle. These procedures should not be attempted by “do-it-yourselfers.”

1. Remove the rear bumper.
 - Apply masking tape as shown.



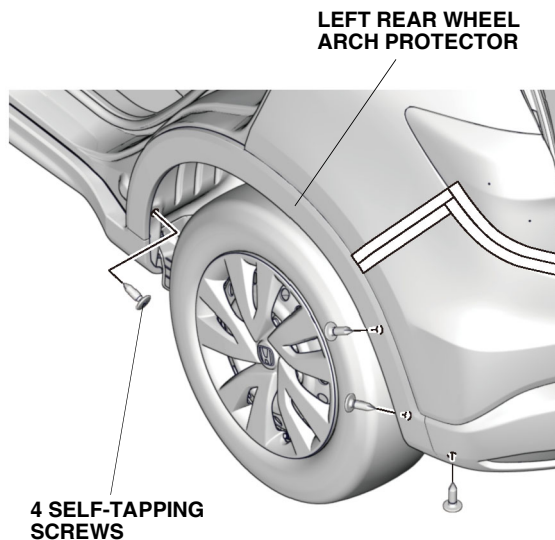
REAR FENDER

MASKING TAPE

REAR BUMPER

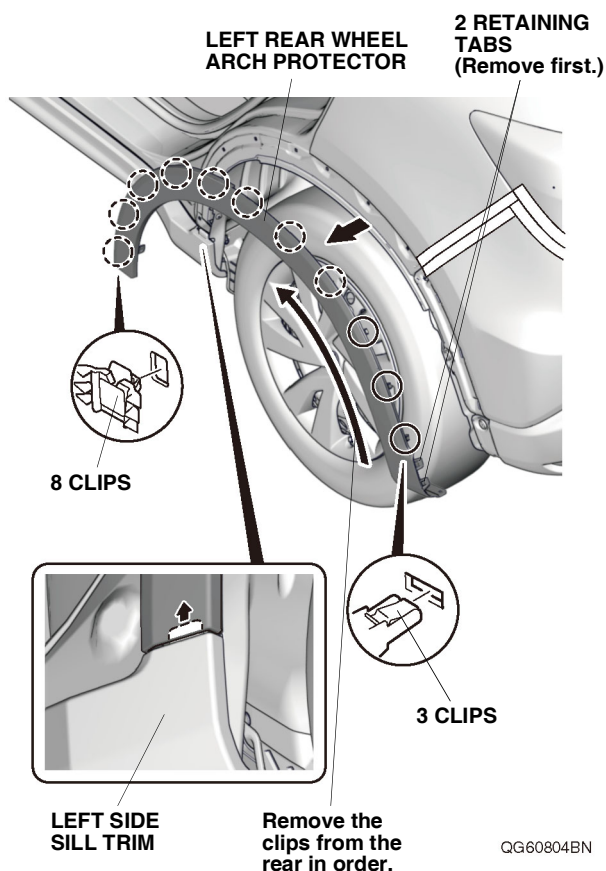
QG60802AN

- Remove the four self-tapping screws on each side.



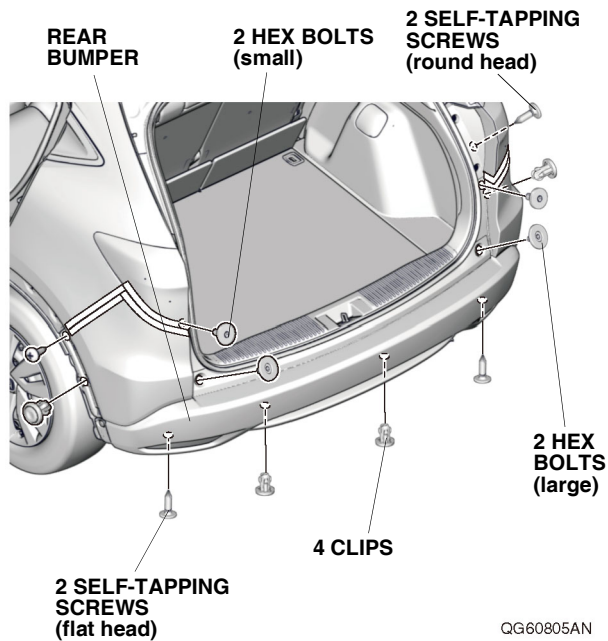
QG60803AN

- Remove the rear wheel arch protector on each side.

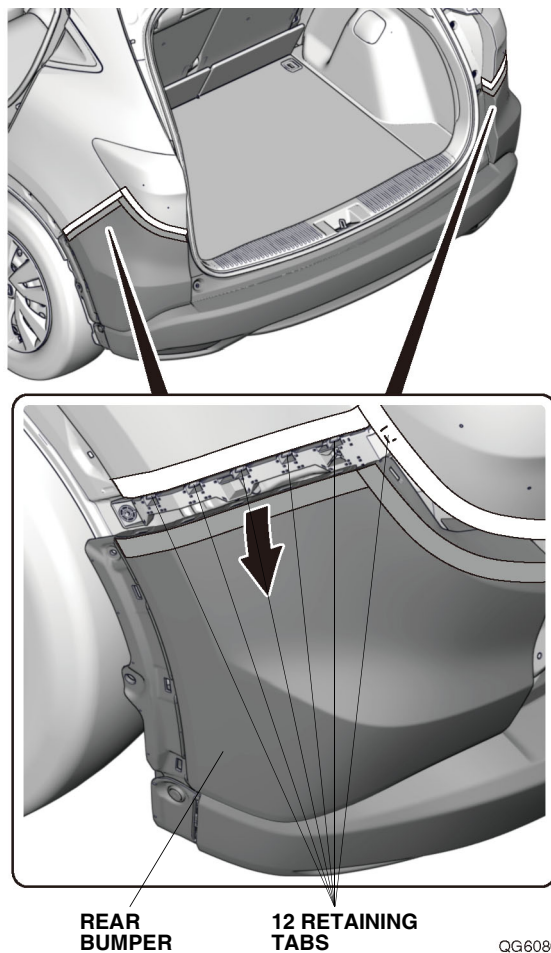


QG60804BN

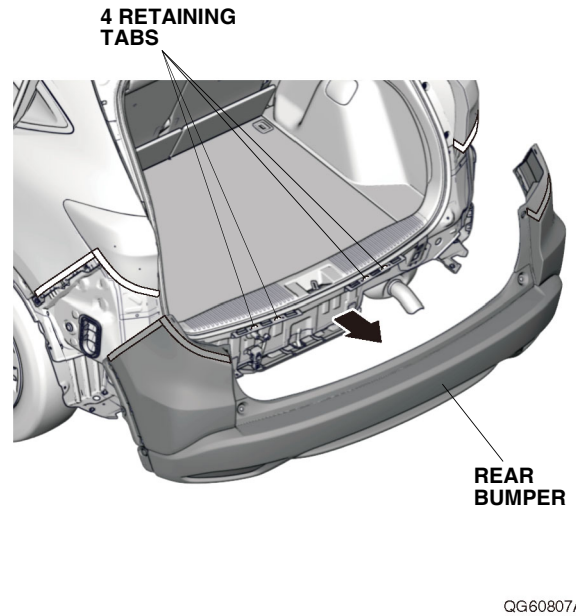
- Remove the four hex bolts, four self-tapping screws, and four clips.



- Release the 12 retaining tabs.



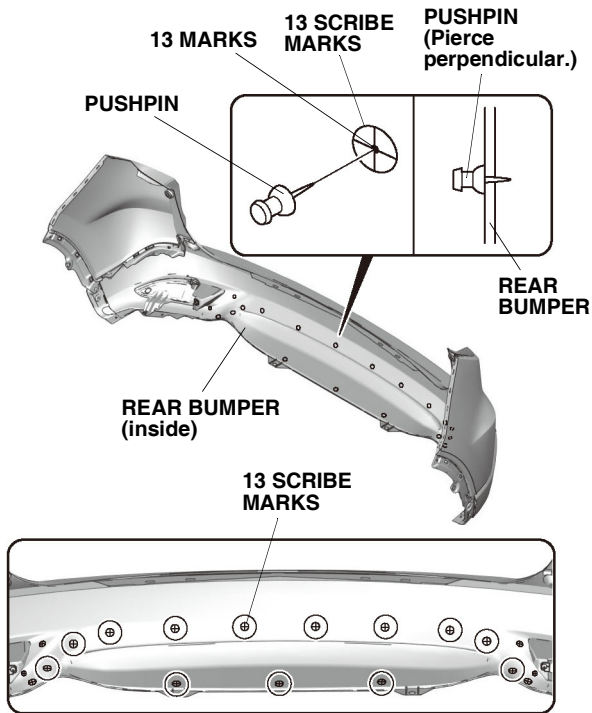
- With the help of an assistant, remove the rear bumper.
- Place the rear bumper on a blanket.



2. Mark the inside of the rear bumper:

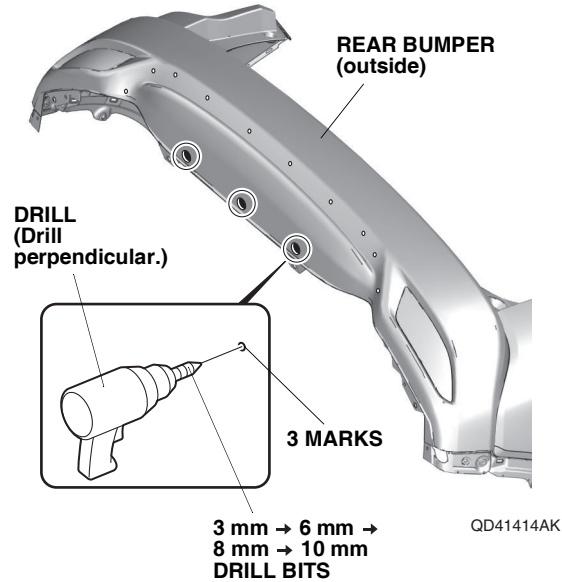
- Locate the 13 scribe marks on the inside of the rear bumper.
- Using a pushpin, pierce the rear bumper at the 13 scribe marks.

NOTE: There are several scribe marks on the inside of the rear bumper. Before piercing the rear bumper, verify you have the correct locations. Make sure to pierce the scribe marks perpendicular to the rear bumper.

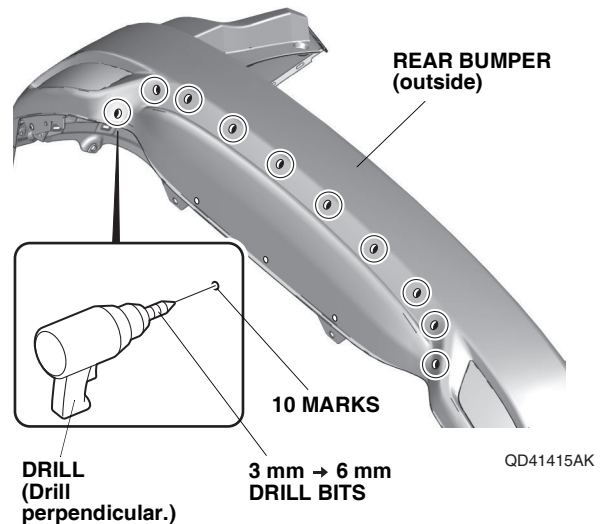


QH21603AA

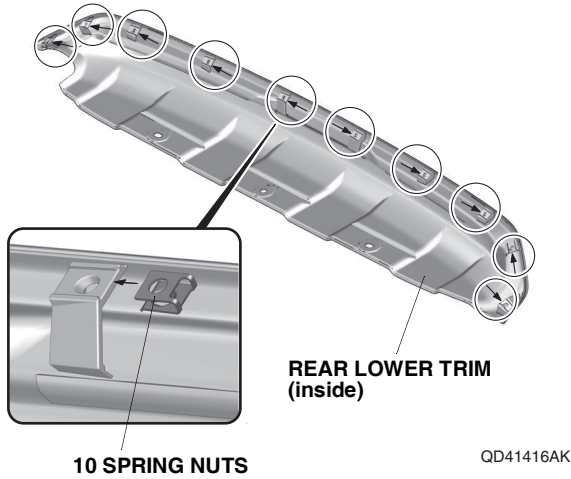
3. While wearing eye protection, drill these three pierced marks to 10 mm. First, drill with a 3 mm drill bit, then follow with a 6 mm drill bit and 8 mm drill bit, and finish with a 10 mm drill bit. Remove any burrs. NOTE: Make sure to drill perpendicular to the rear bumper.



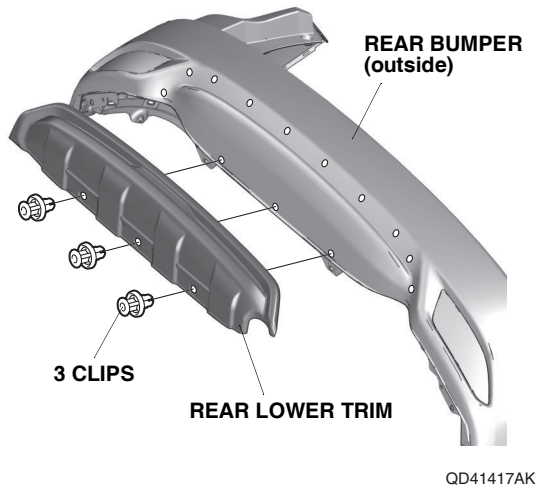
4. While wearing eye protection, drill the 10 pierced marks to 6 mm. First, drill with a 3 mm drill bit, and finish with a 6 mm drill bit. Remove all burrs. NOTE: Make sure to drill perpendicular to the rear bumper.



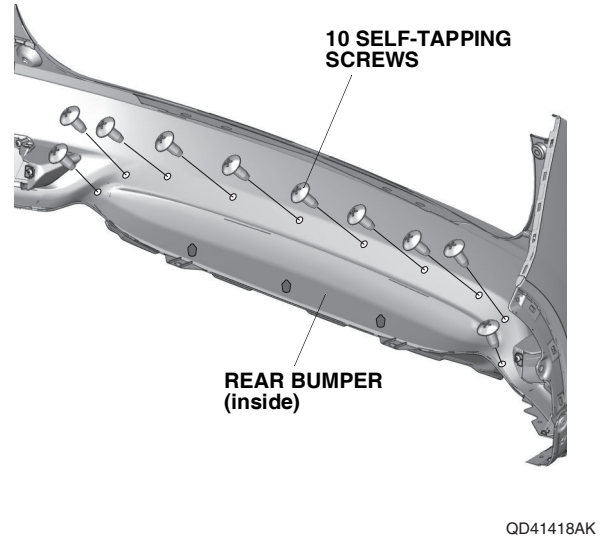
5. Install the 10 spring nuts to the rear lower trim.
NOTE: Make sure to install the spring nuts with the large hole facing away from the rear lower trim.



6. Install the rear lower trim to the rear bumper with three clips.



7. Secure the rear lower trim to the rear bumper with 10 self-tapping screws.



8. Install all removed parts.