



HONDA INSTALLATION INSTRUCTIONS

Accessory

FOG LIGHTS
P/N 08V31-T7A-100

Application

2022 HR-V

Publications No.

VERSION 1

Issue Date

JUL 2021

PARTS LIST

Right fog light
(Identification mark: RH)



Left fog light
(Identification mark: LH)



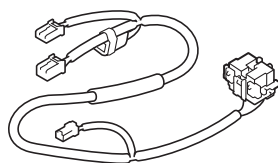
Right fog light trim



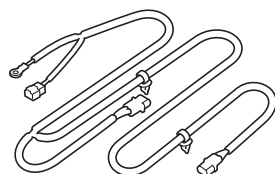
Left fog light trim



Switch harness



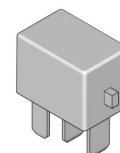
Fog light harness



Combination light switch



Relay



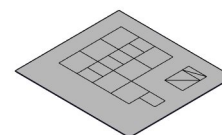
13 Wire ties



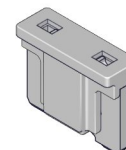
4 Self-tapping screws



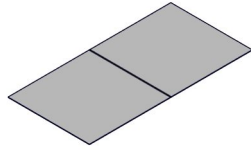
Fuse label



15A Fuse



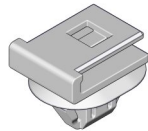
2 Aluminum tapes



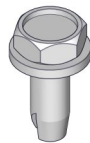
4 Long wire ties



Clip
(May not be used)



Ground bolt



TOOLS AND SUPPLIES REQUIRED

Phillips screwdriver

Ratchet

10 mm Socket

Diagonal cutters

Blanket

Masking tape

Isopropyl alcohol

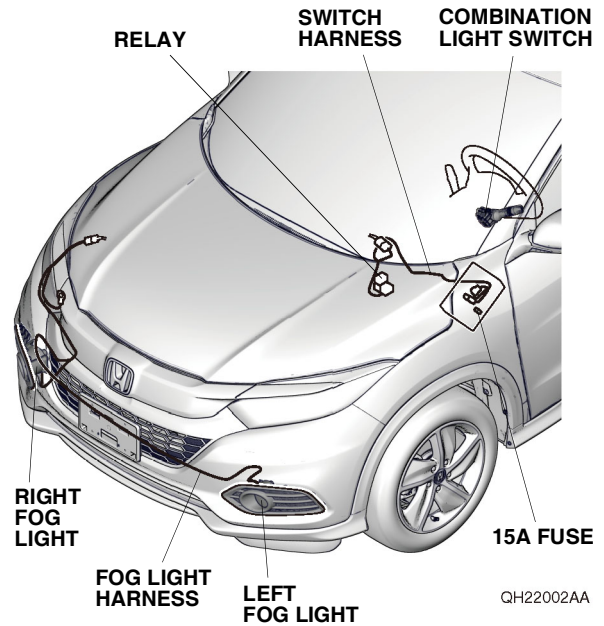
Shop towel

Tape measure

The following tools are available through the Honda Tool and Equipment Program. On the iN, click on: Service > Service Bay > Tool and Equipment Program, then enter the number under "Search". Or, call 888-424-6857.

- Plastic Trim Tool (T/N SILTRIMTL10)
- Trim Tool Set (T/N SOJATP2014)

Illustration of the Fog Lights Installed on the Vehicle

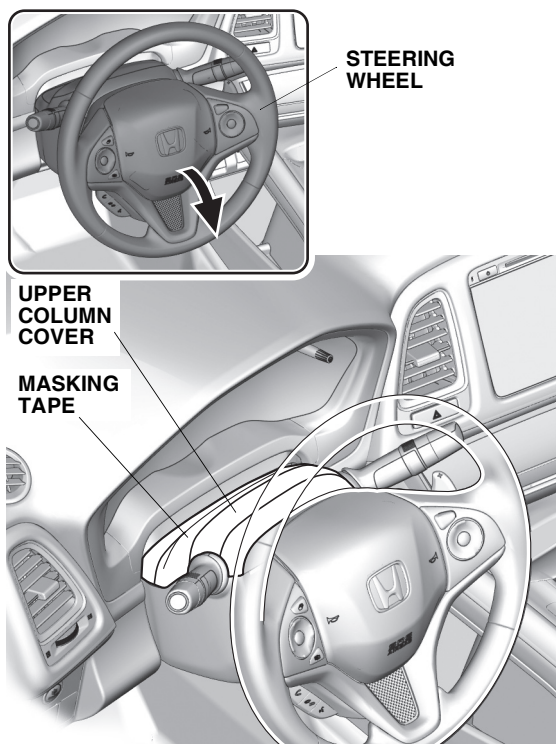


INSTALLATION

Customer Information: The information in this installation instruction is intended for use only by skilled technicians who have the proper tools, equipment, and training to correctly and safely add equipment to your vehicle. These procedures should not be attempted by "do-it-yourselfers."

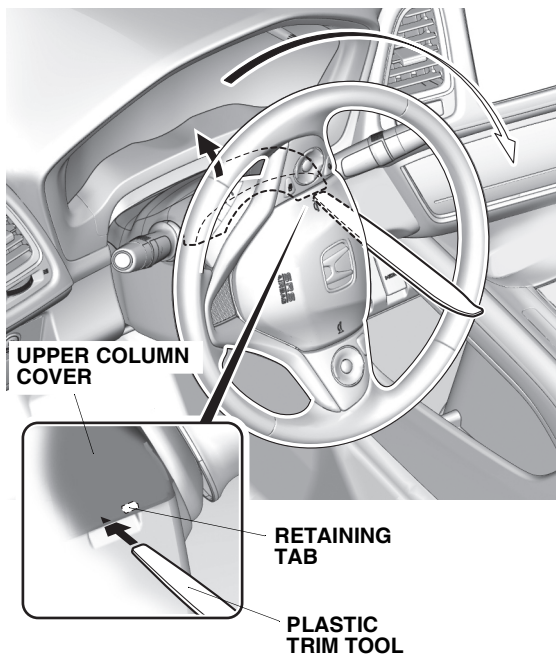
1. Disconnect the negative cable from the battery.

2. Lower the steering wheel. Apply masking tape to the upper column cover as shown.



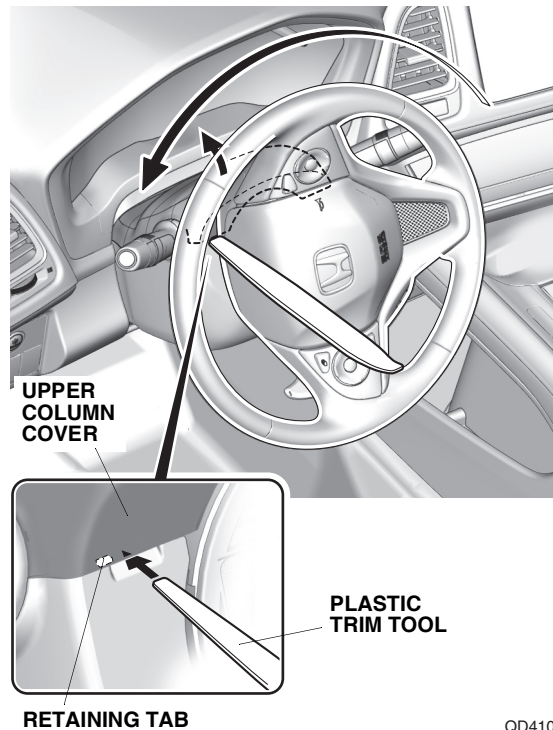
QD41002AJ

3. Turn the steering wheel 90° clockwise. Using a plastic trim tool, release the upper column cover.



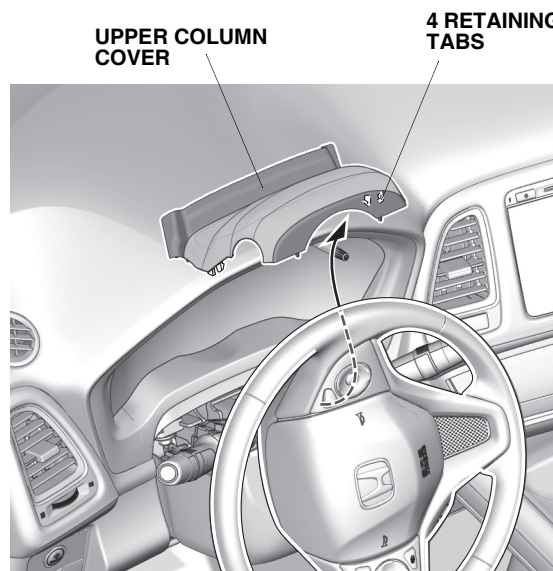
QD41003AJ

4. Turn the steering wheel 180° counterclockwise. Using a plastic trim tool, release the upper column cover.



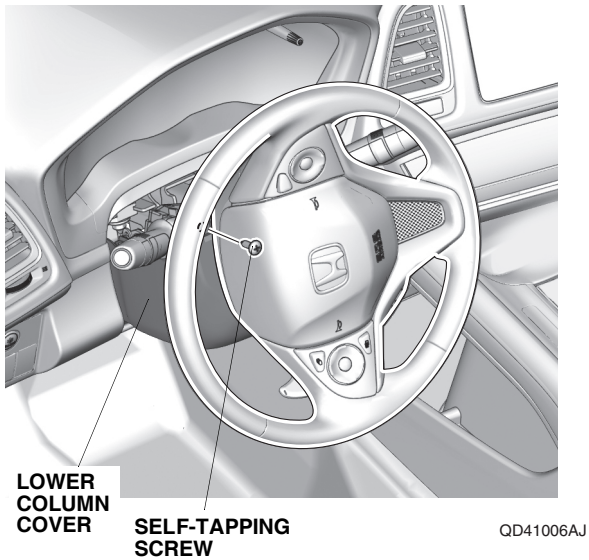
QD41004AJ

5. Remove the upper column cover.

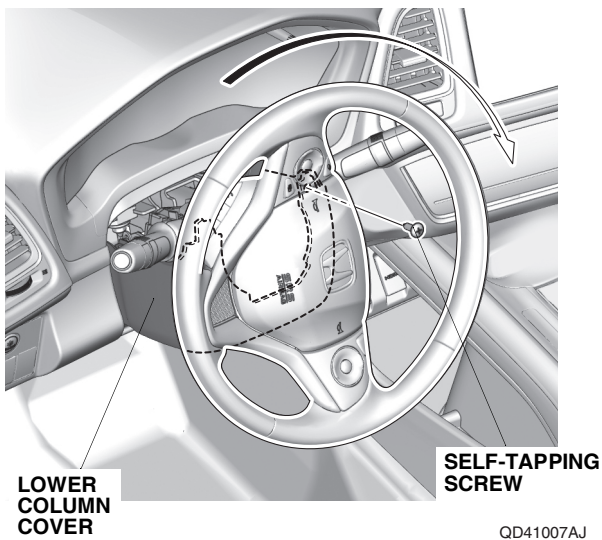


QD41005AJ

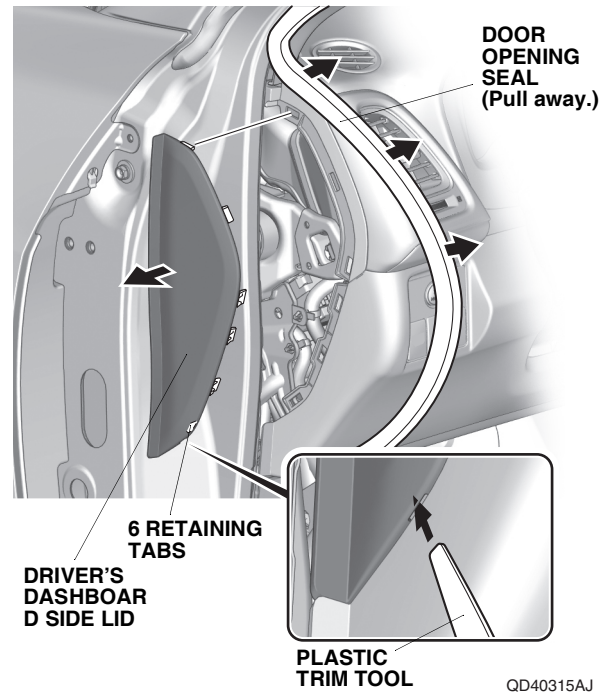
- Remove the self-tapping screw from the lower column cover.



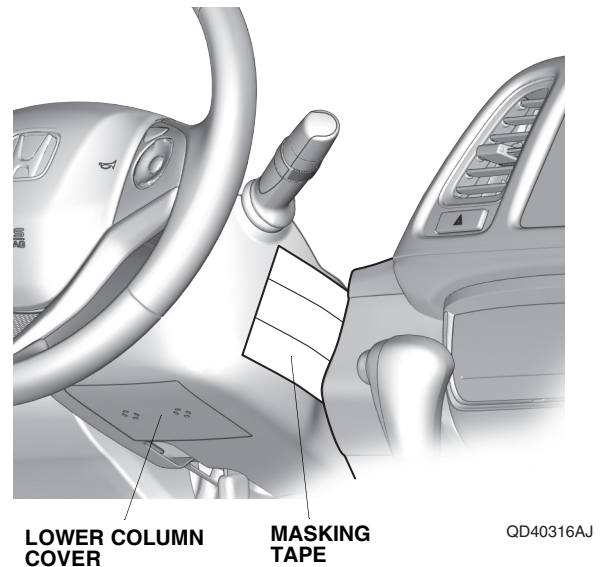
- Turn the steering wheel 180° clockwise, and remove the self-tapping screw from the lower column cover.



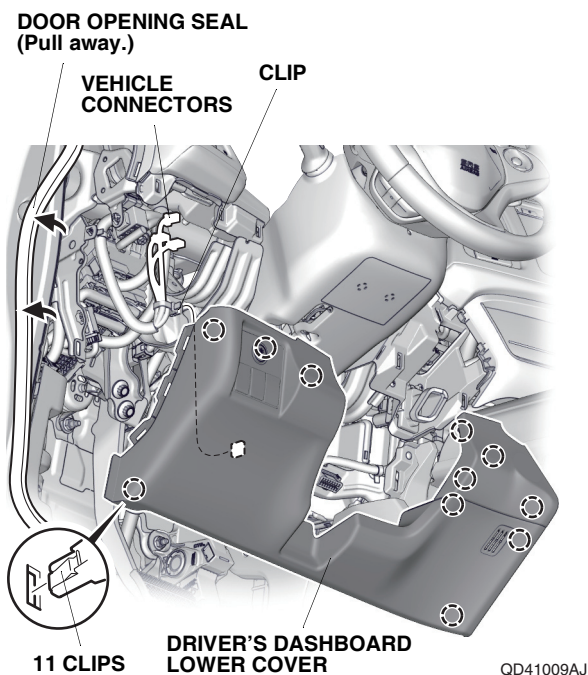
- Pull away the door opening seal, and remove the driver's dashboard side lid.



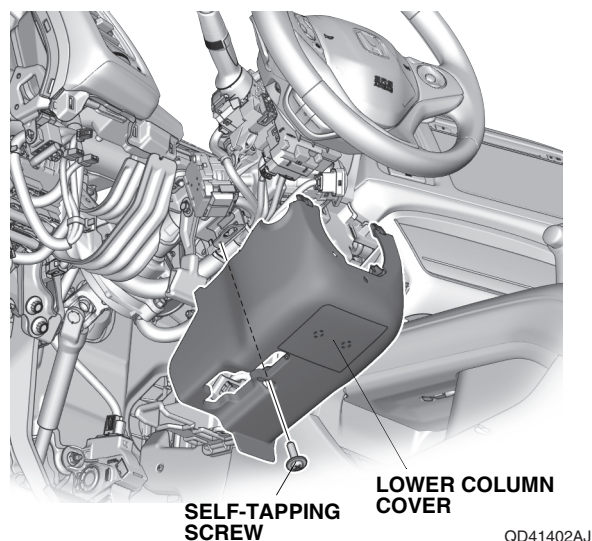
- Apply masking tape to the lower column cover.



10. Pull away the door opening seal. Remove the driver's dashboard lower cover, and unplug the vehicle connectors.

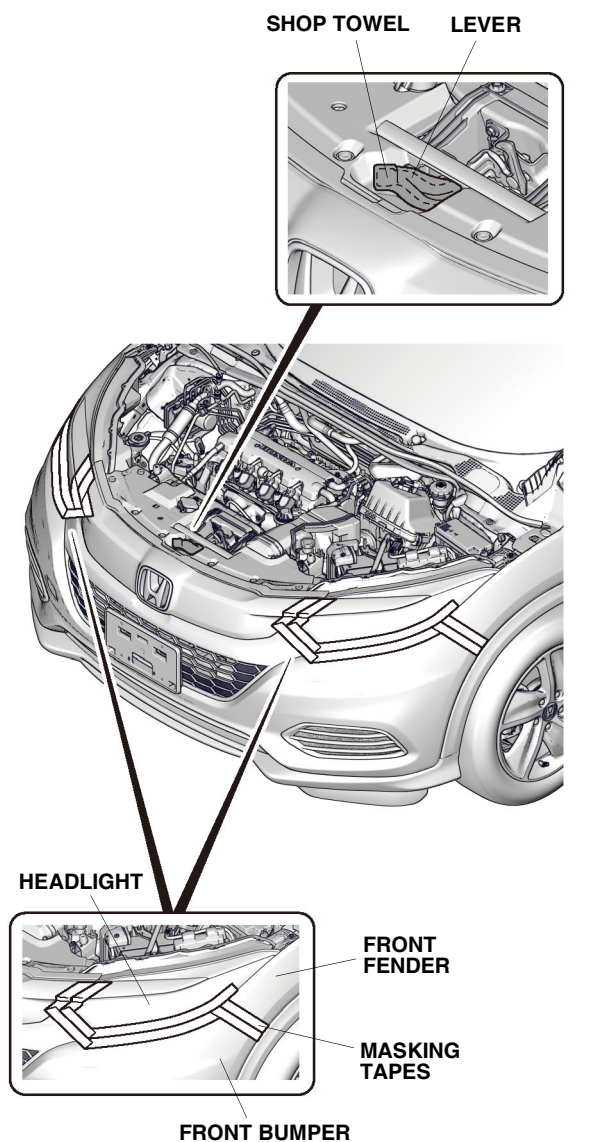


11. Remove the lower column cover.

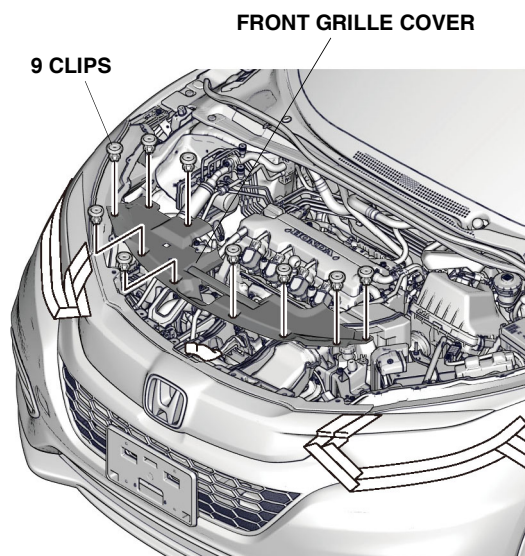


12. Remove the front bumper:

- Wrap a shop towel around the lever.
- Apply masking tape as shown.

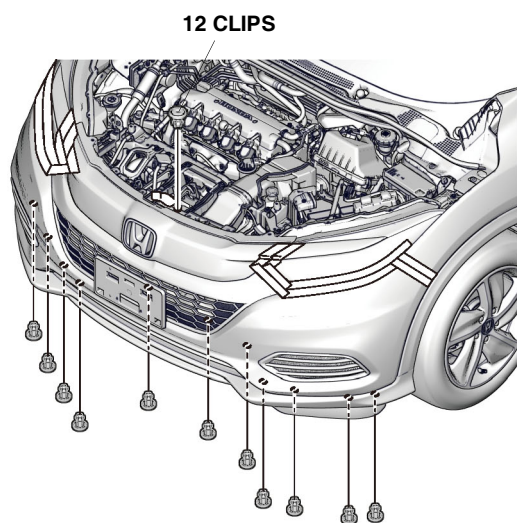


- Remove the front grille cover.

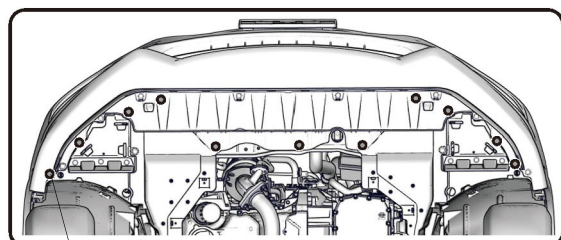


QH22004AA

- Remove the 12 clips.

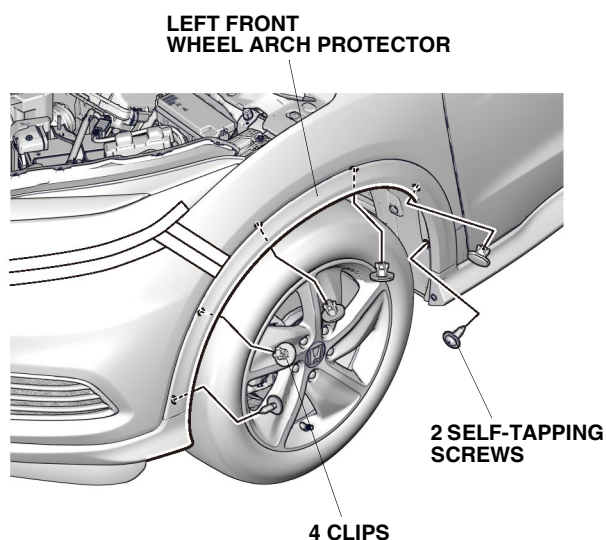


BOTTOM VIEW



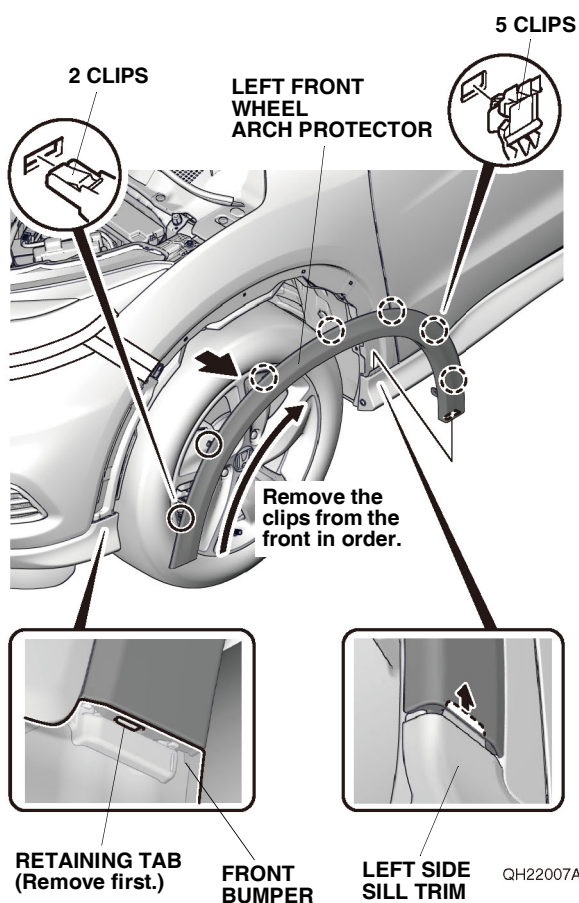
QH22005AA

- Remove the two self-tapping screws and four clips on each side.



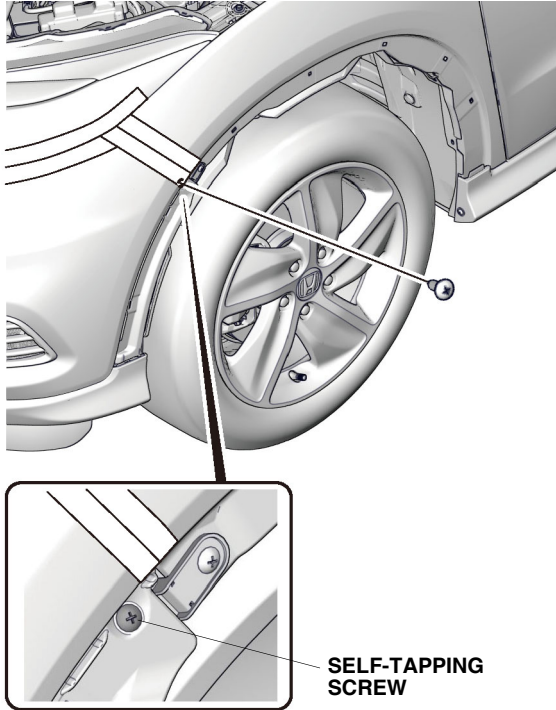
QH22006AA

- Remove the front wheel arch protector on each side.



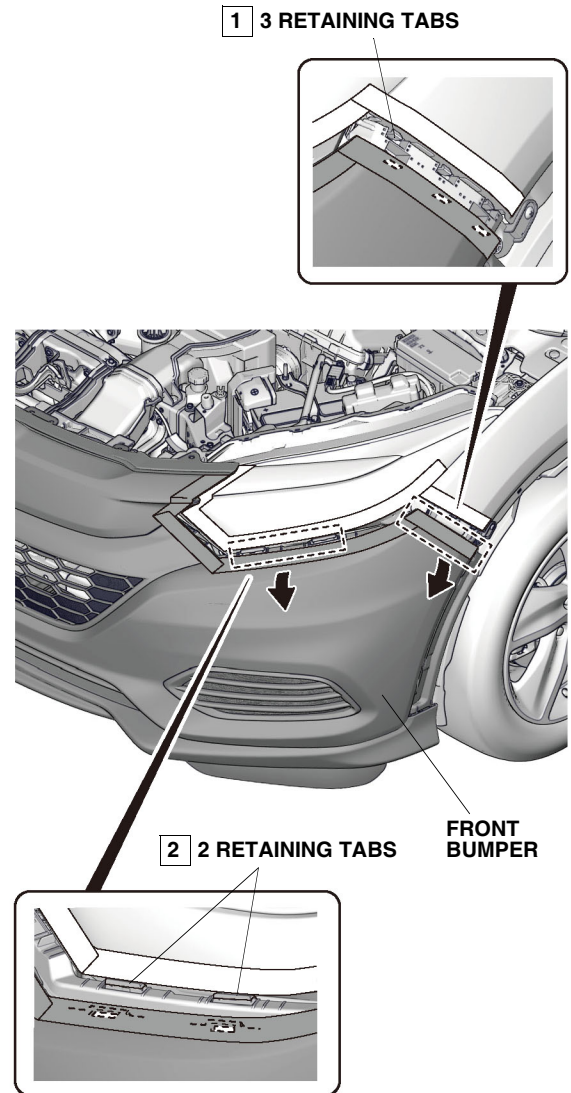
QH22007AA

- Remove the self-tapping screw on each side.



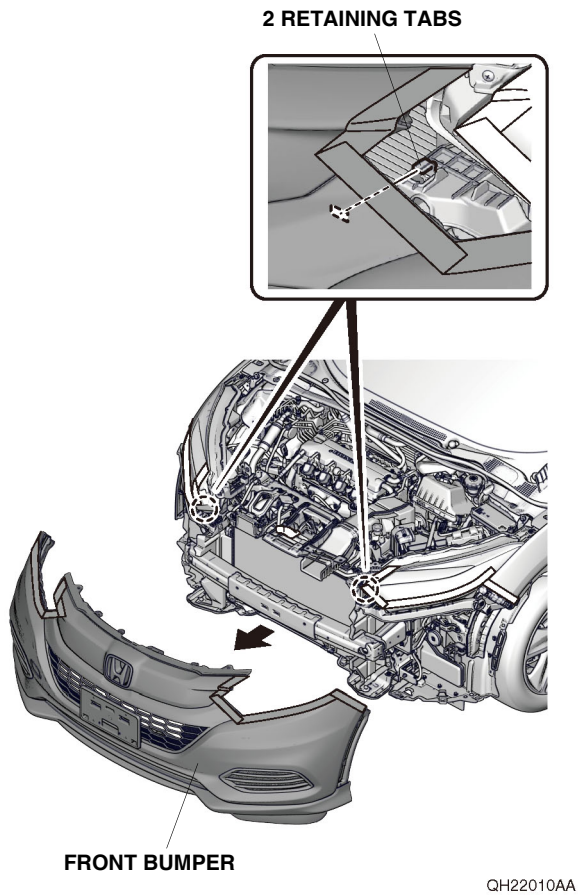
QH22008AA

- Release the five retaining tabs on each side, in the order shown.



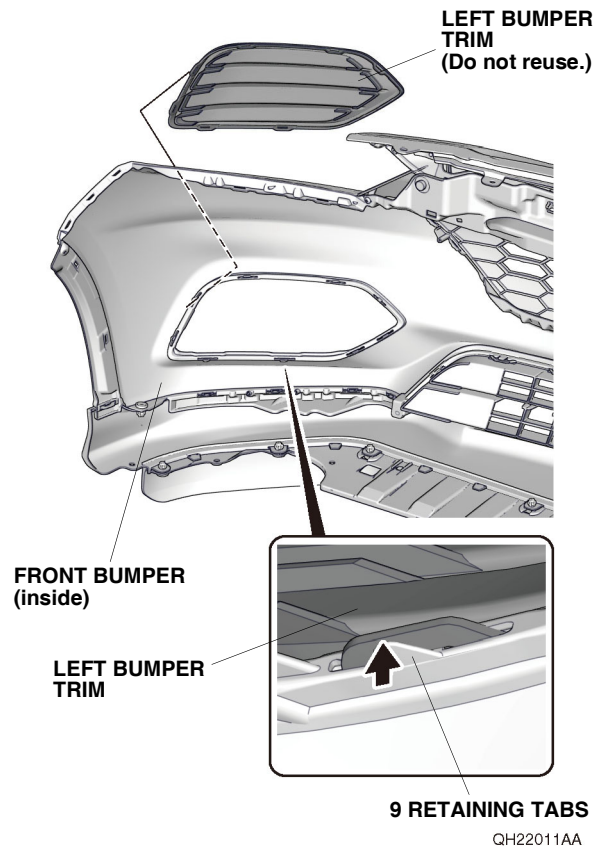
QH22009AA

- With the help of an assistant, remove the front bumper.
- Place the front bumper on a blanket.



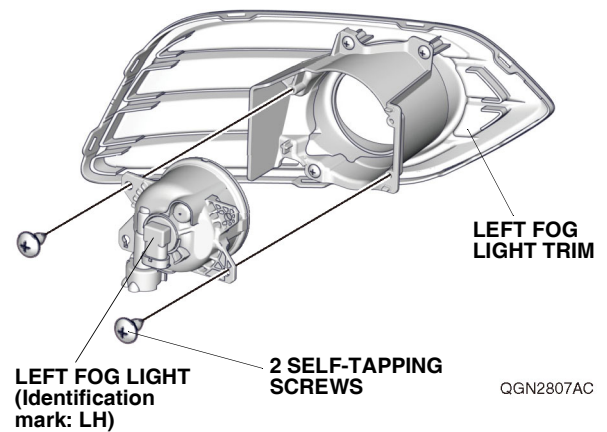
Installing the Fog Lights

13. Remove the left bumper trim.

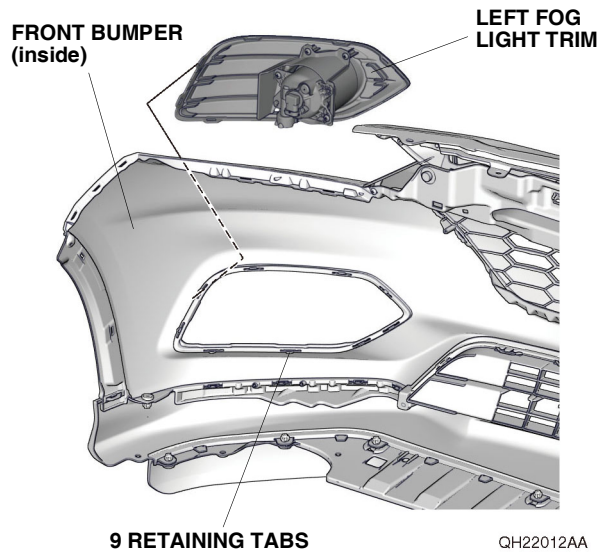


14. Install the left fog light to the left fog light trim with two self-tapping screws.

NOTE: Check that the back of the fog light has the correct identification mark before installation.



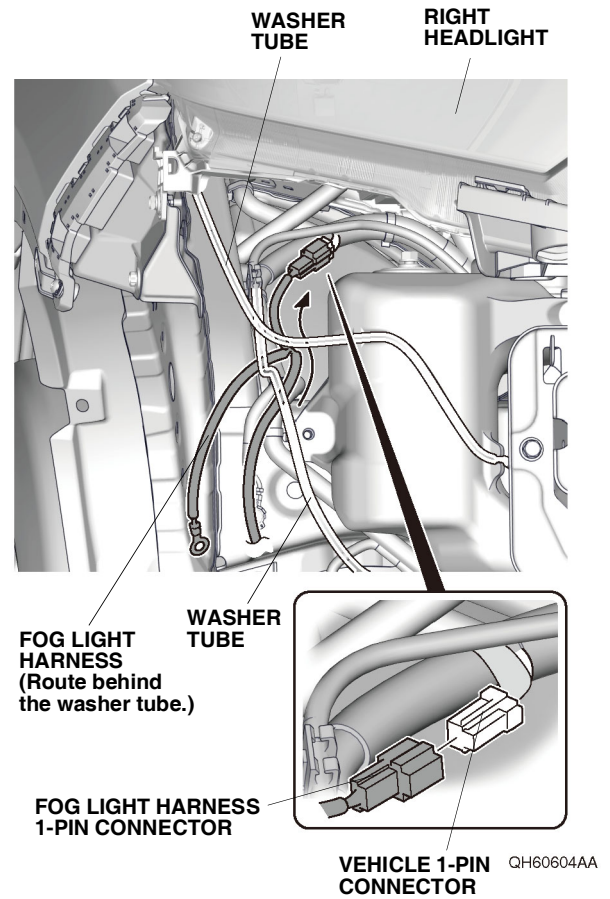
15. Install the left fog light trim to the front bumper with nine retaining tabs.



16. Repeat steps 13 thru 15 for the other side.

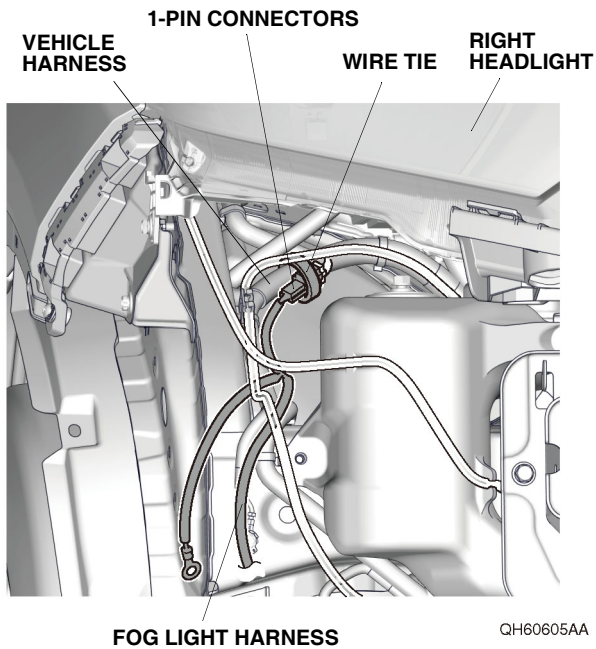
Routing the Fog Light Harness

17. Route the fog light harness as shown.

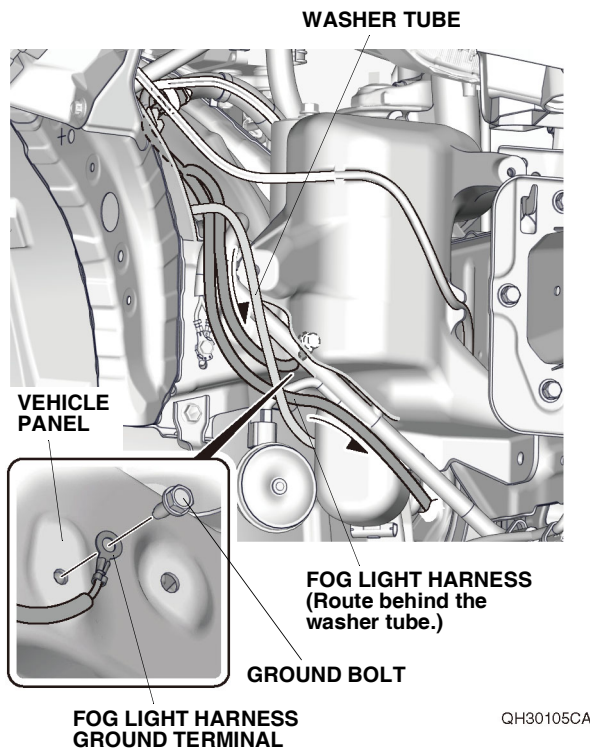


18. Plug the vehicle 1-pin connector into the fog light harness 1-pin connector.

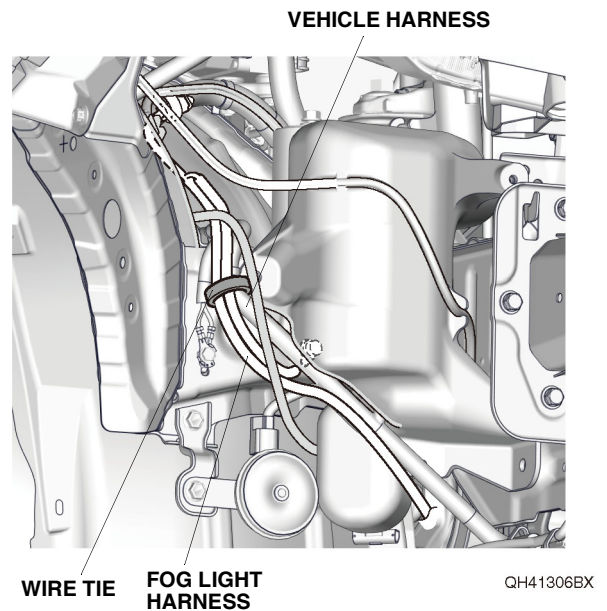
19. Secure the 1-pin connectors to the vehicle harness with one wire tie.



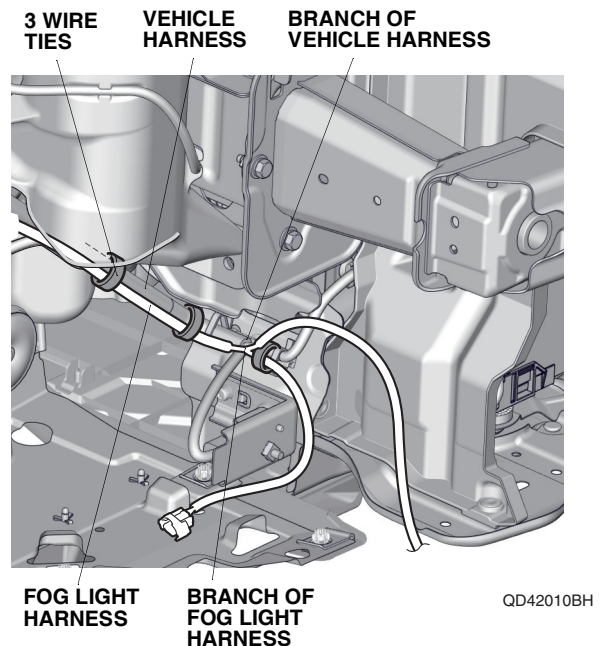
20. Route the fog light harness as shown. Install the fog light harness ground terminal to the vehicle panel with one ground bolt.



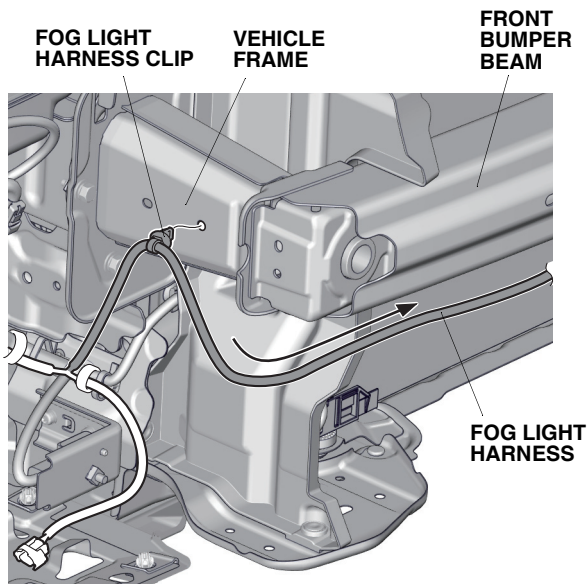
21. Secure the fog light harness to the vehicle harness with one wire tie.



22. Line up the branch of fog light harness with the branch of vehicle harness, and secure the fog light harness to the vehicle harness with three wire ties.



23. Secure the fog light harness clip to the hole in the vehicle frame as shown.

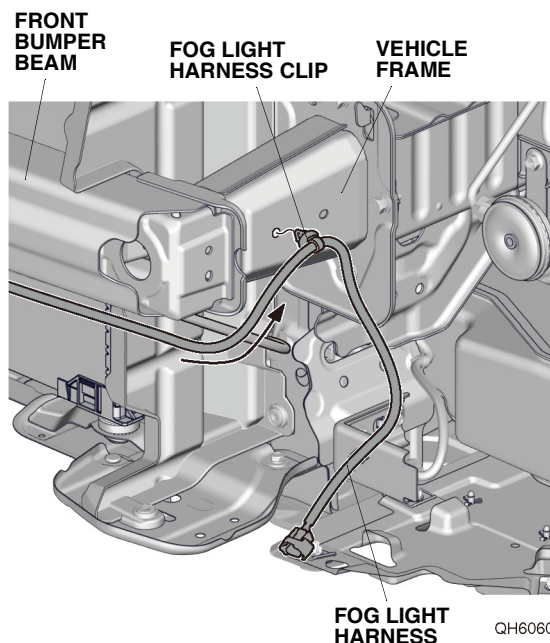


QD42011AH

If the vehicle is equipped with another accessory harness, go to step 27; otherwise, continue with step 24.

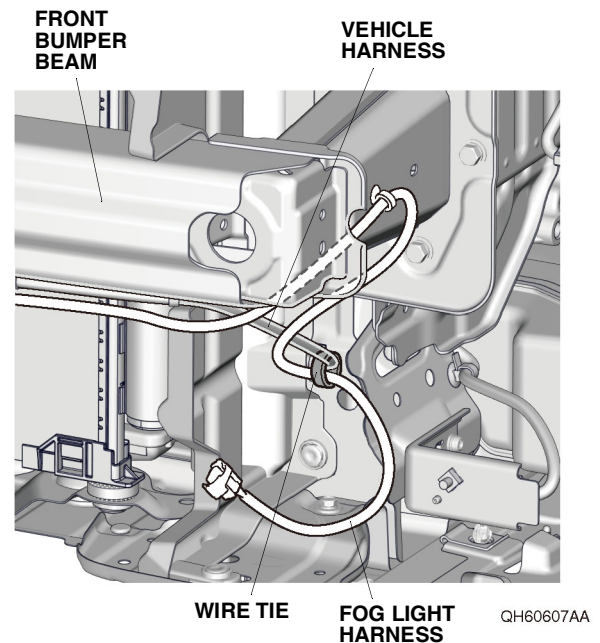
Without Another Accessory Harness

24. Route the fog light harness as shown. Secure the fog light harness clip to the hole in the vehicle frame as shown.



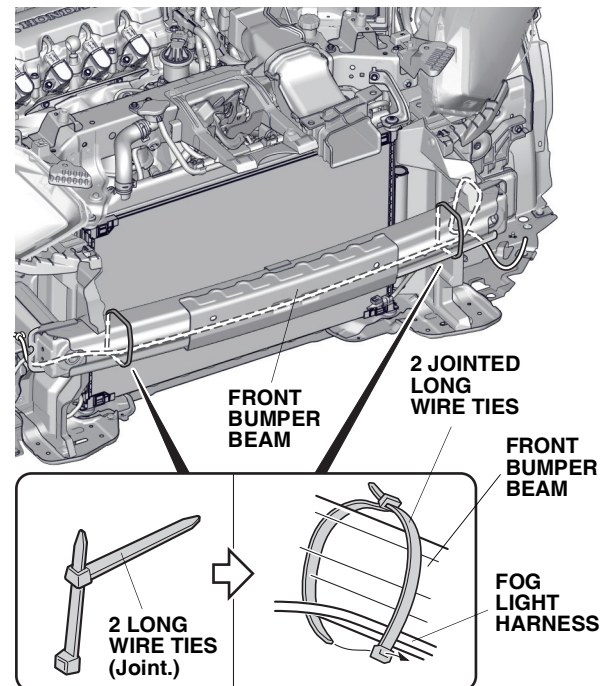
QH60606AA

25. Secure the fog light harness to the vehicle harness with one wire tie.



QH60607AA

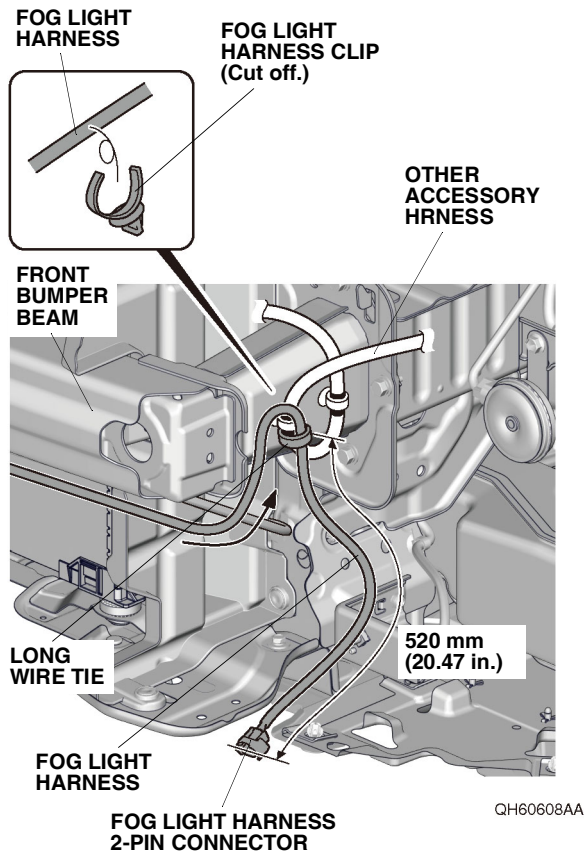
26. Connect two long wire ties together, and secure the fog light harness to the front bumper beam with them. Go to step 32.



QD42014AH

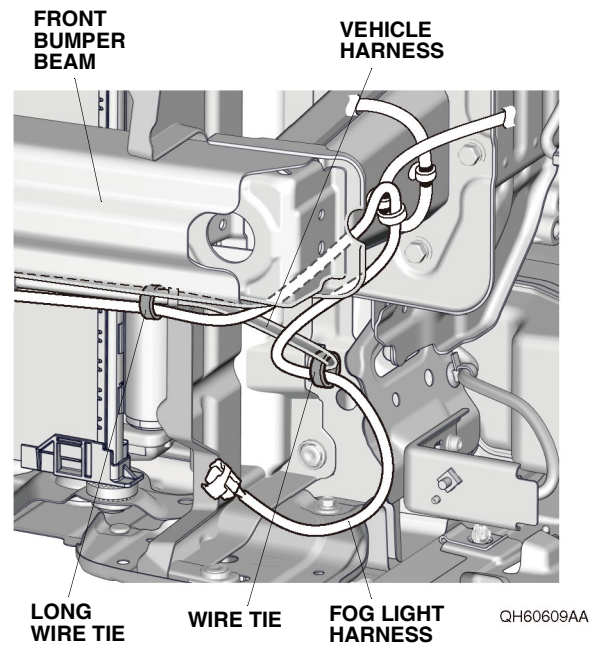
With Another Accessory Harness

27. Route the fog light harness as shown.

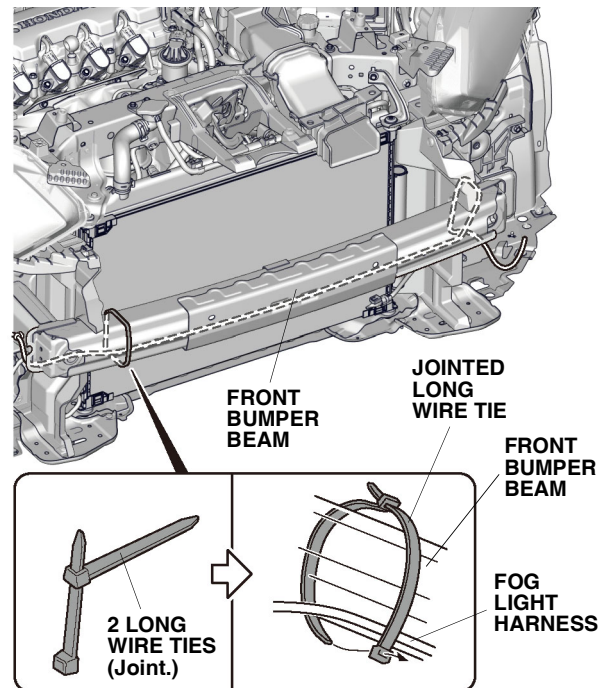


28. Using diagonal cutters, cut off the fog light harness clip.
NOTE: Be careful not to damage the fog light harness.
29. Secure the fog light harness to the other accessory harness with one long wire tie as shown.

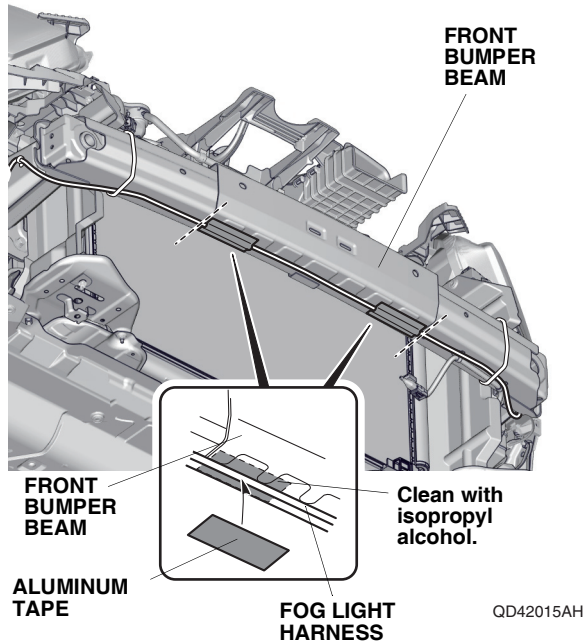
30. Secure the fog light harness to the vehicle harness with one wire tie and one long wire tie as shown.



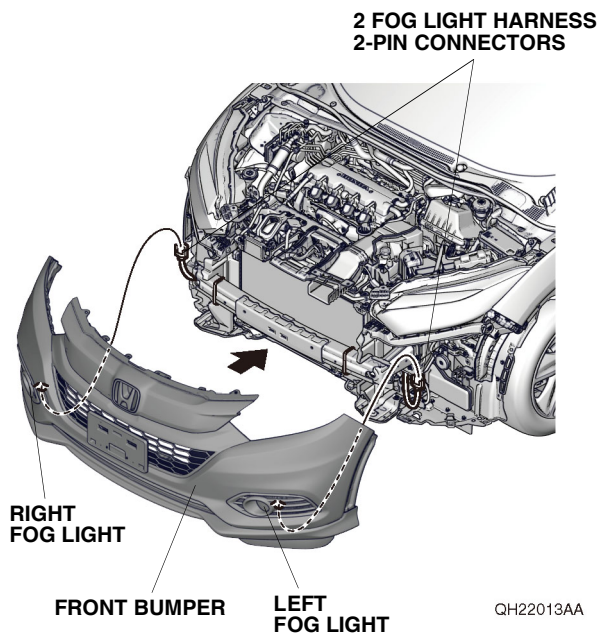
31. Connect two long wire ties together, and secure the fog light harness to the front bumper beam with them.



32. Using isopropyl alcohol on a shop towel, thoroughly clean the front bumper beam where the aluminum tape will attach.

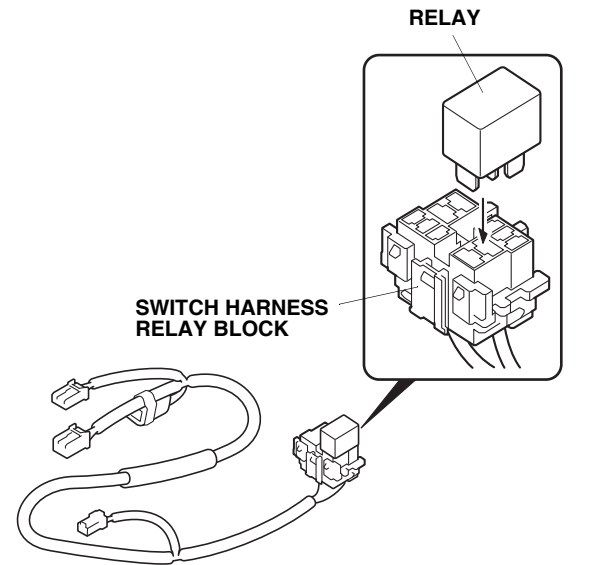


33. Secure the fog light harness to the front bumper beam with two pieces of aluminum tape as shown.
34. With the help of an assistant, bring the front bumper close to the vehicle, and plug the two fog light harness 2-pin connectors into the right and left fog light. Install the front bumper.

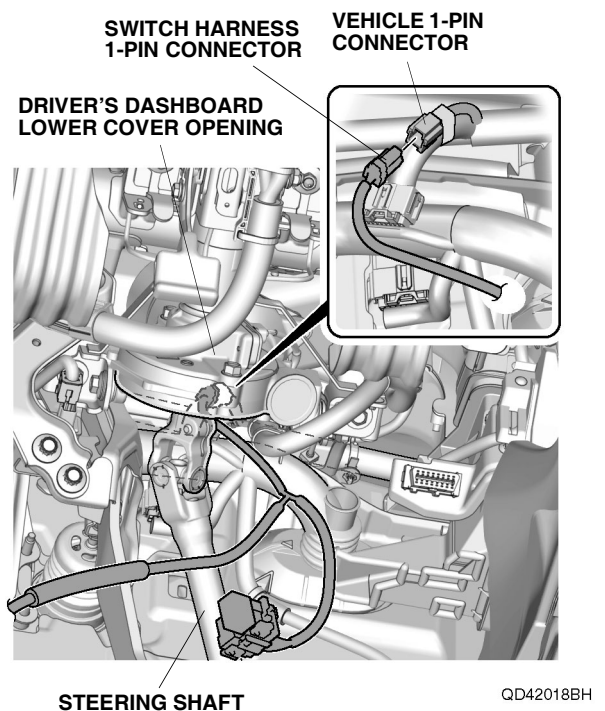


Routing the Switch Harness

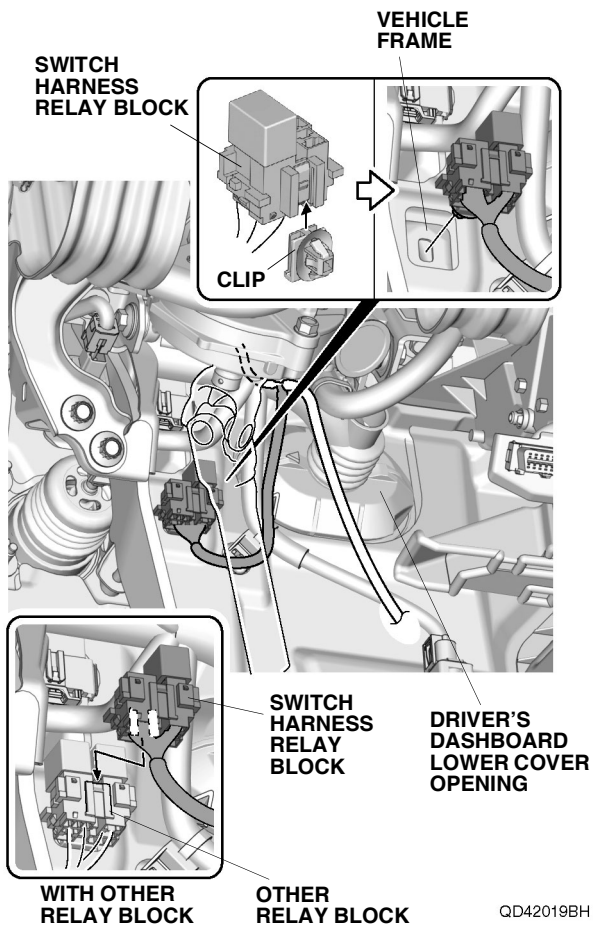
35. Install the relay to the switch harness relay block.



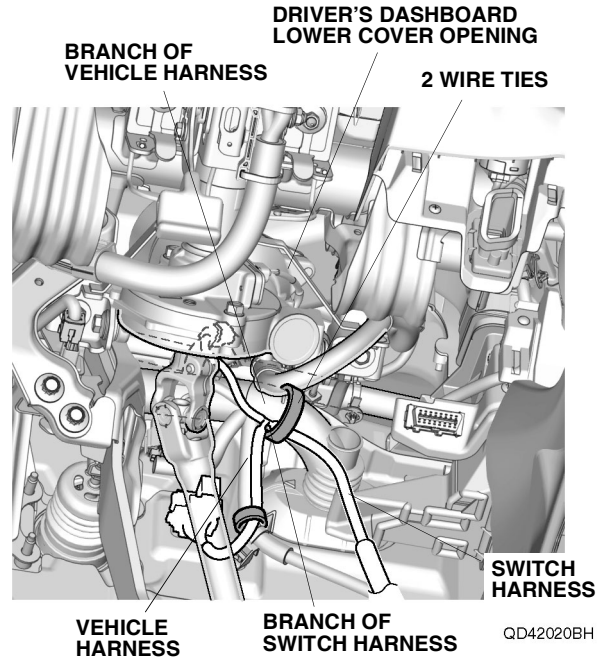
36. Plug the switch harness 1-pin connector into the vehicle 1-pin connector.



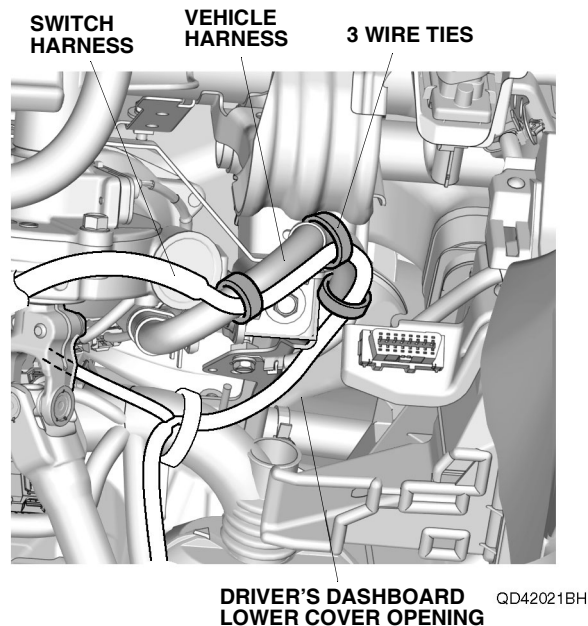
37. Install the clip to the switch harness relay block. Secure the switch harness relay block to the hole in the vehicle frame. If another relay block is already secured to the hole in the vehicle frame, secure the switch harness relay block to that relay block.



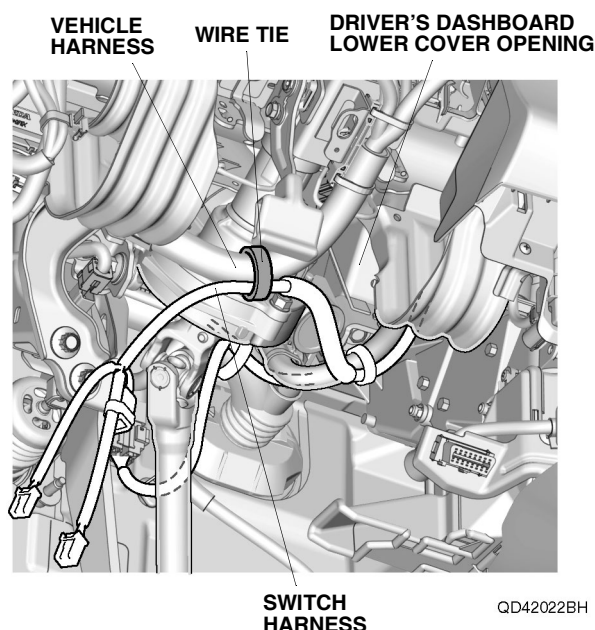
38. Line up the branch of the switch harness with the branch of the vehicle harness, and secure the switch harness to the vehicle harness with two wire ties.



39. Secure the switch harness to the vehicle harness with three wire ties.



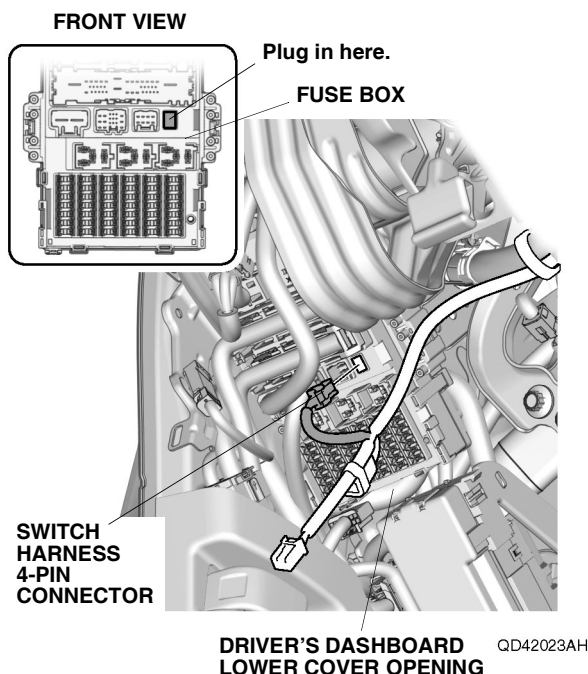
40. Secure the switch harness to the vehicle harness with one wire tie.



If the vehicle is equipped with another accessory harness 4-pin connector, go to step 42; otherwise, continue with step 41.

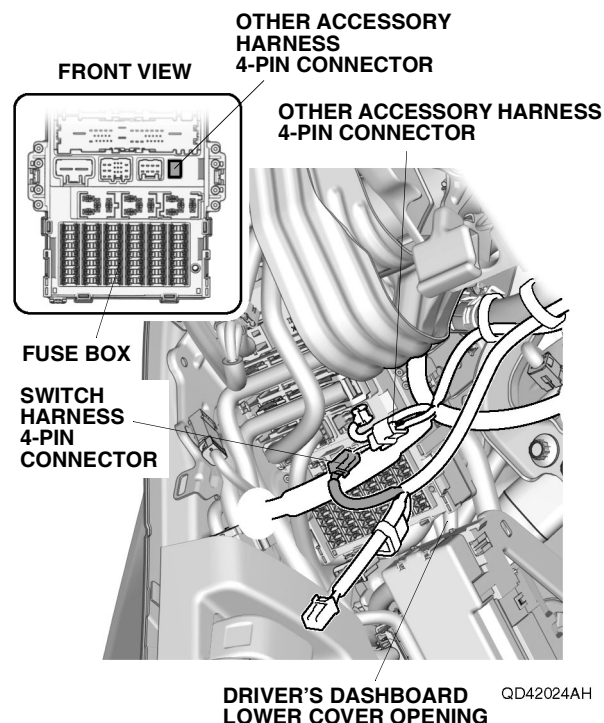
Without Another Accessory Harness 4-pin Connector

41. Plug the switch harness 4-pin connector into the fuse box. Go to step 43.



With Another Accessory Harness 4-pin Connector

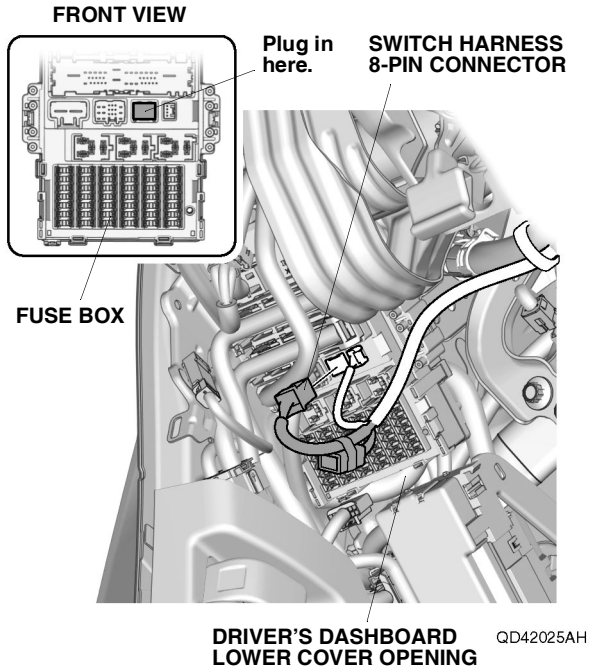
42. If another accessory harness 4-pin connector is plugged into the fuse box, plug the switch harness 4-pin connector into that accessory harness 4-pin connector.



If the vehicle is equipped with another accessory harness 8-pin connector, go to step 44; otherwise, continue with step 43.

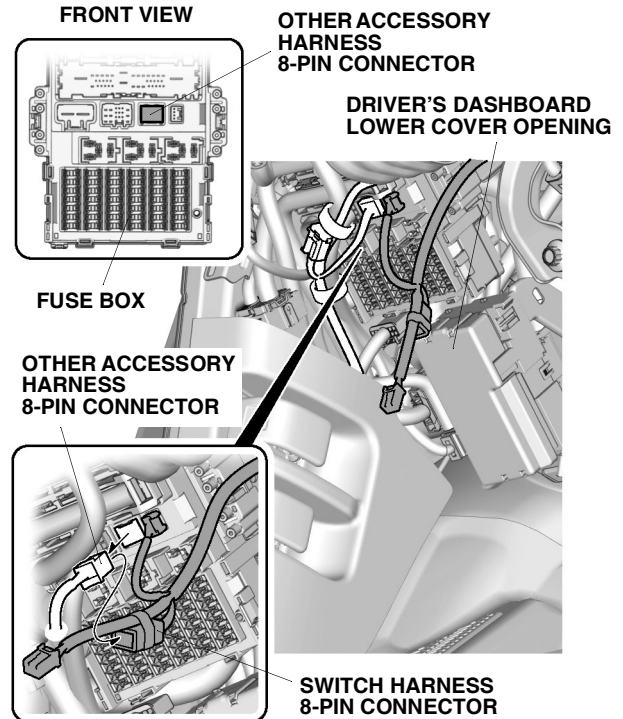
Without Another Accessory Harness 8-pin Connector

43. Plug the switch harness 8-pin connector into the fuse box. Go to step 46.

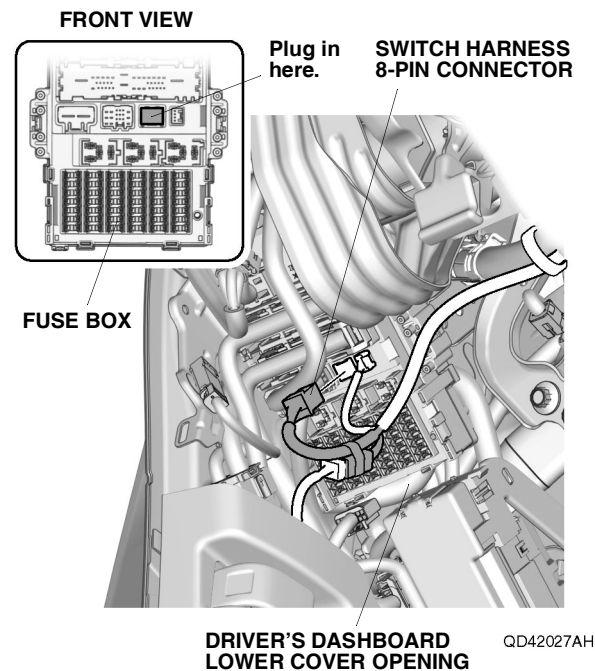


With Another Accessory Harness 8-pin Connector

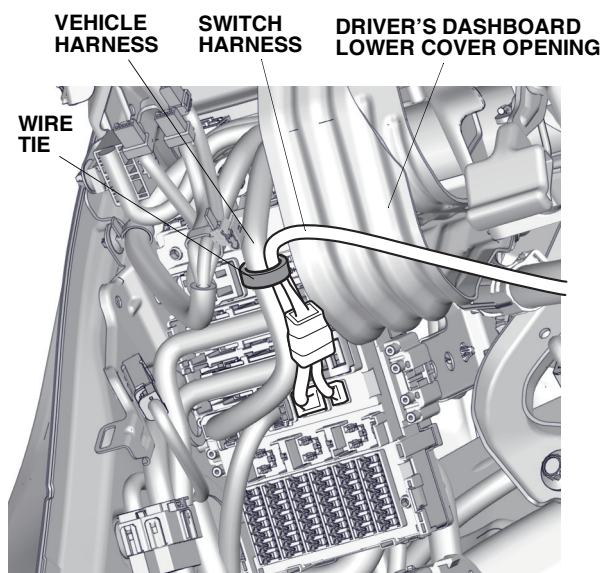
44. If another accessory harness 8-pin connector is plugged into the fuse box, unplug it from fuse box. Plug the other accessory harness 8-pin connector into the switch harness 8-pin connector.



45. Plug the switch harness 8-pin connector into the fuse box.

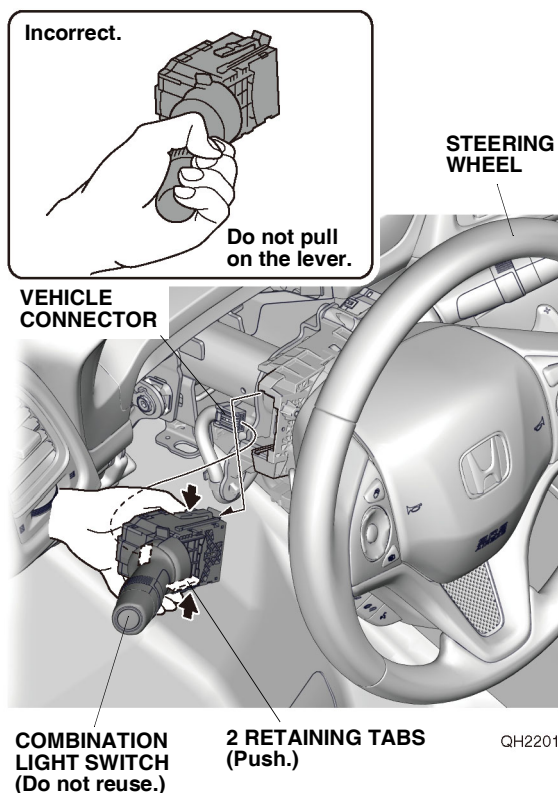


46. Secure the switch harness to the vehicle harness with one wire tie.



QD42028AH

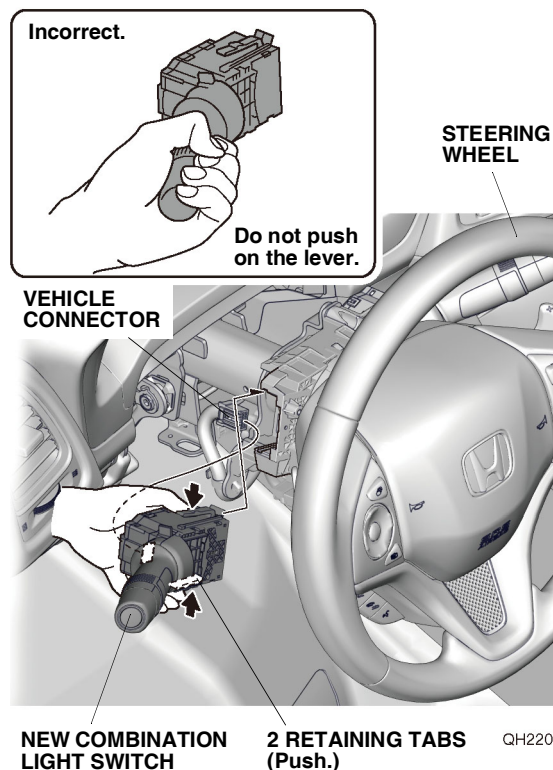
47. Unplug the vehicle connector from the combination light switch.



QH22014AA

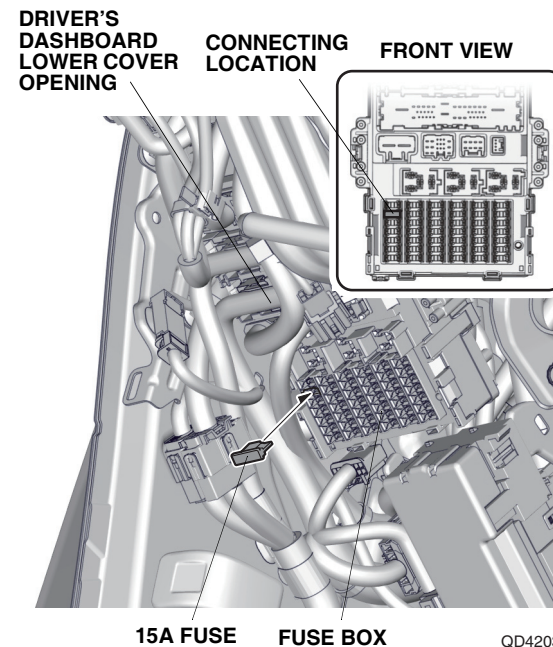
48. While pushing the two retaining tabs, slide the combination light switch out and remove it from the steering column.
NOTE: Do not pull on the lever when removing the switch.

49. Install the new combination light switch to the steering column.
NOTE: Do not push on the lever when installing the switch.



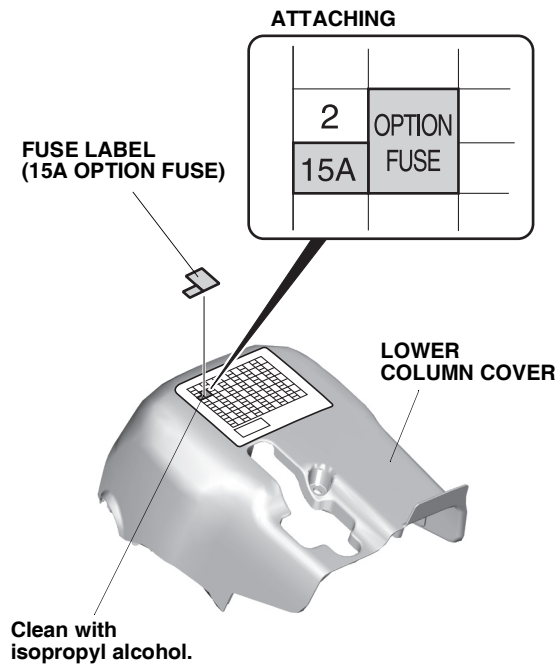
QH22015AA

50. Plug the vehicle connector into the new combination light switch.
51. Plug the 15A fuse into the fuse box.

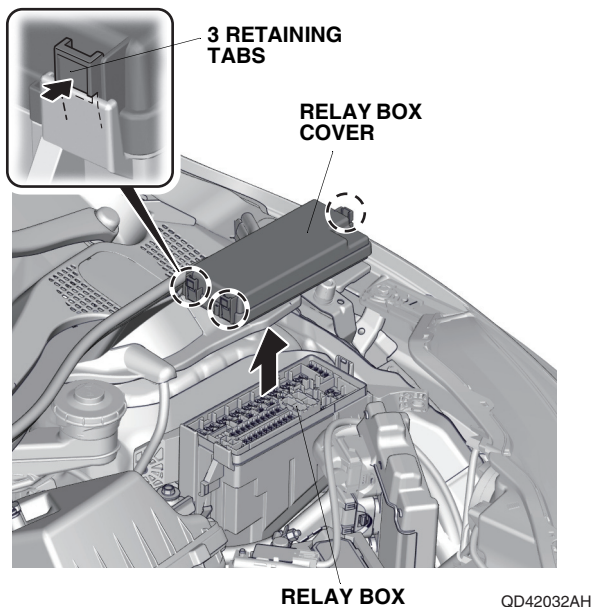


QD42031AH

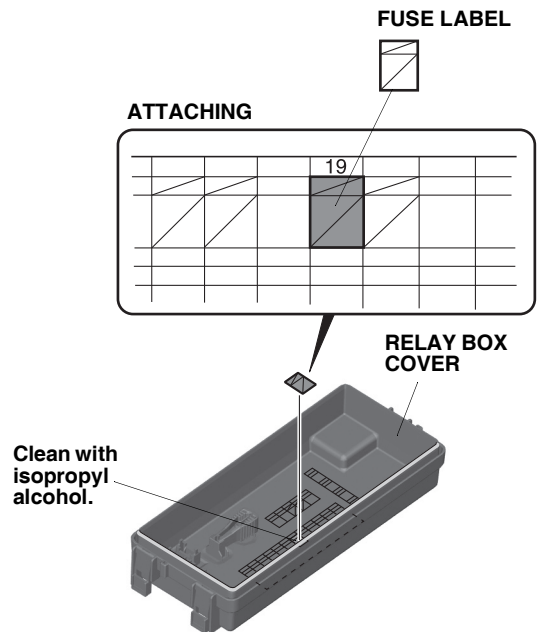
52. Using isopropyl alcohol on a shop towel, clean the lower column cover where the fuse label will attach.



53. Attach the fuse label to the lower column cover.
54. Remove the relay box cover.



55. Using isopropyl alcohol on a shop towel, clean the relay box cover.



56. Attach the fuse label to the relay box cover.
57. Check that all wire harnesses are routed properly and all connectors are plugged in.
58. Install all removed parts.
59. Connect the negative cable to the battery.
60. Press and hold the audio unit power button for 2 seconds to restore radio and navi (if equipped) system functions.
61. Set the clock on vehicles without navigation.
62. If necessary, restore the systems back to normal operation as described in the service information.

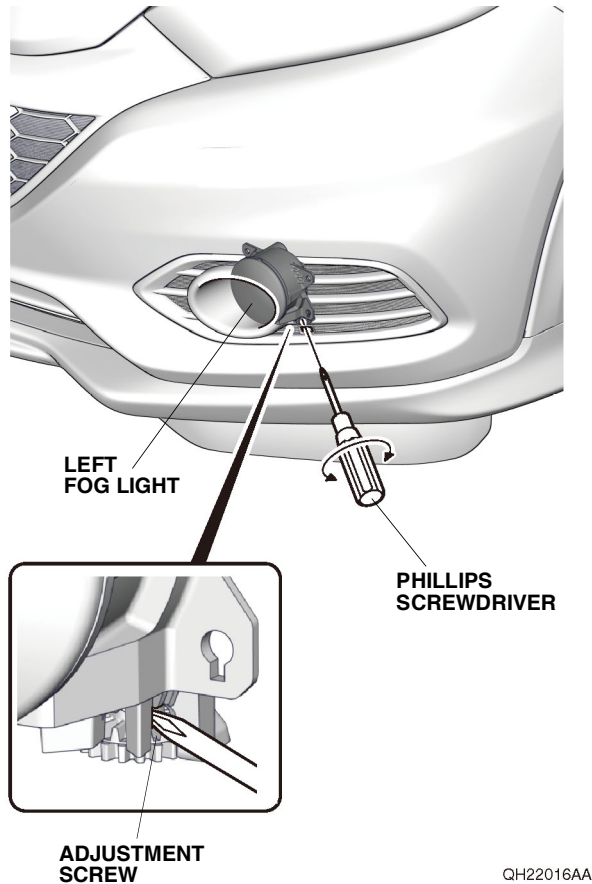
Check the Operation of the Fog Lights

63. Make sure the fog lights operate as described in the vehicle owner's manual.

How to Aim the Fog Lights

64. Adjust the fog light aim by turning the adjustment screw in or out until the correct aim is obtained. Adjust the aim according to local laws and regulations.

NOTE: The fog light lenses may cloud when the outside temperature is cold; this is normal and should go away in warm weather.



BULB REPLACEMENT

NOTE: Perform bulb replacement by referring to the vehicle owner's manual.