



## HONDA INSTALLATION INSTRUCTIONS

### Accessory

**SPLASH GUARDS**  
P/N 08P00-T7S-100A

### Application

2021 HR-V

### Publications No.

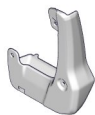
**VERSION 1**

### Issue Date

**SEP 2020**

## PARTS LIST

Left front splash guard



Right front splash guard



Left rear splash guard



Right rear splash guard



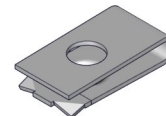
4 Self-tapping screws, 5 x 25 mm



2 Self-tapping screws, 5 x 18 mm



2 Spring nuts

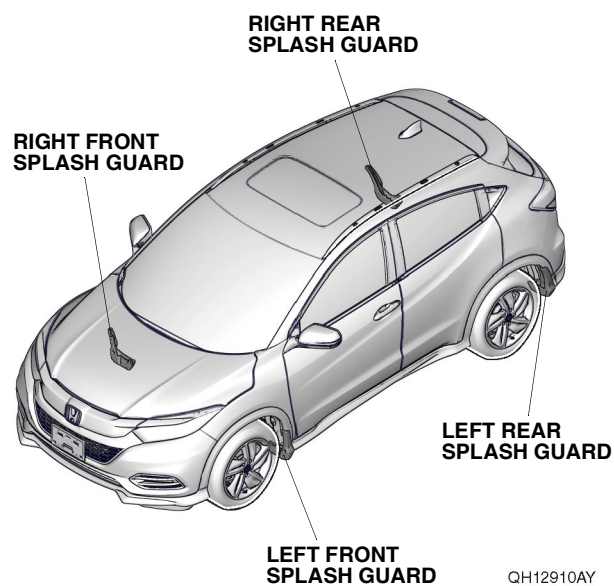


## TOOLS AND SUPPLIES REQUIRED

Phillips screwdriver

Stubby Phillips screwdriver

## Illustration of the Splash Guards on the Vehicle



## INSTALLATION

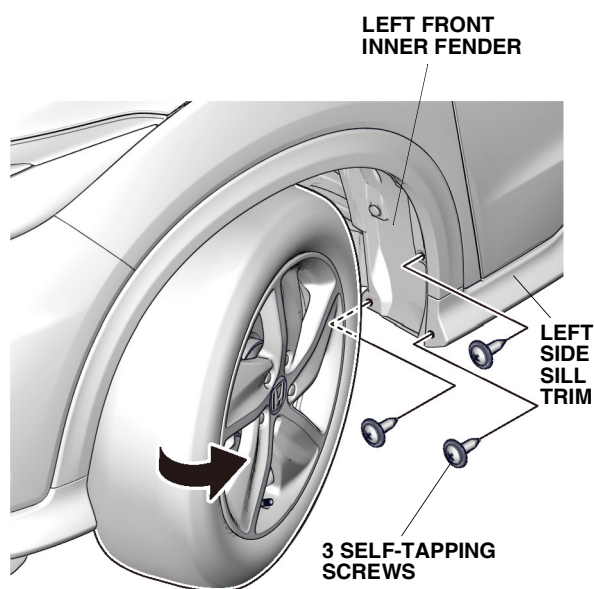
**Customer Information:** The information in this installation instruction is intended for use only by skilled technicians who have the proper tools, equipment, and training to correctly and safely add equipment to your vehicle. These procedures should not be attempted by “do-it-yourselfers.”

### NOTE:

- Be careful not to damage the body paint finish.
- Clean the areas to be covered.

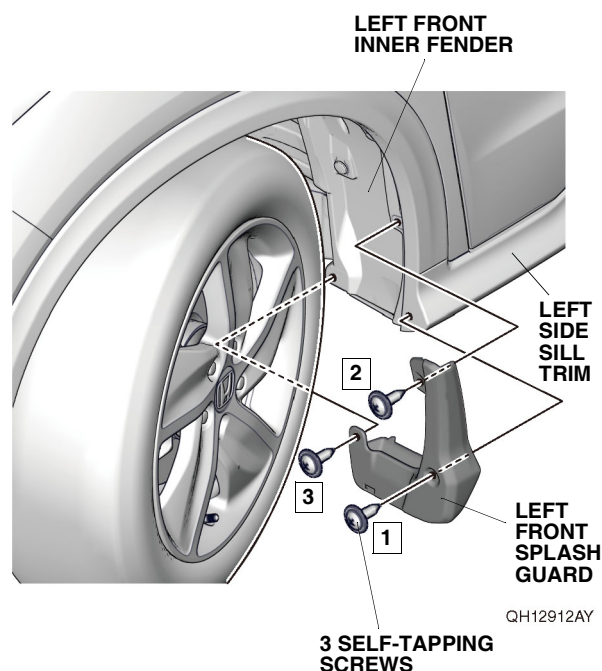
### Installing the Splash Guards

1. Turn the steering wheel fully counterclockwise.

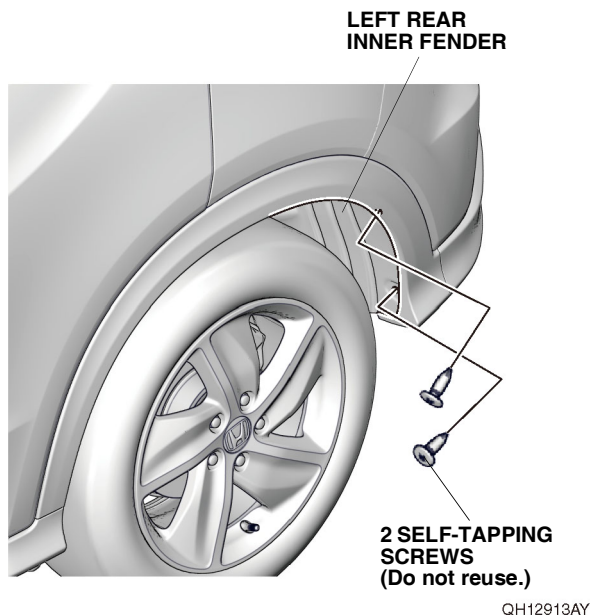


2. Remove the three self-tapping screws.

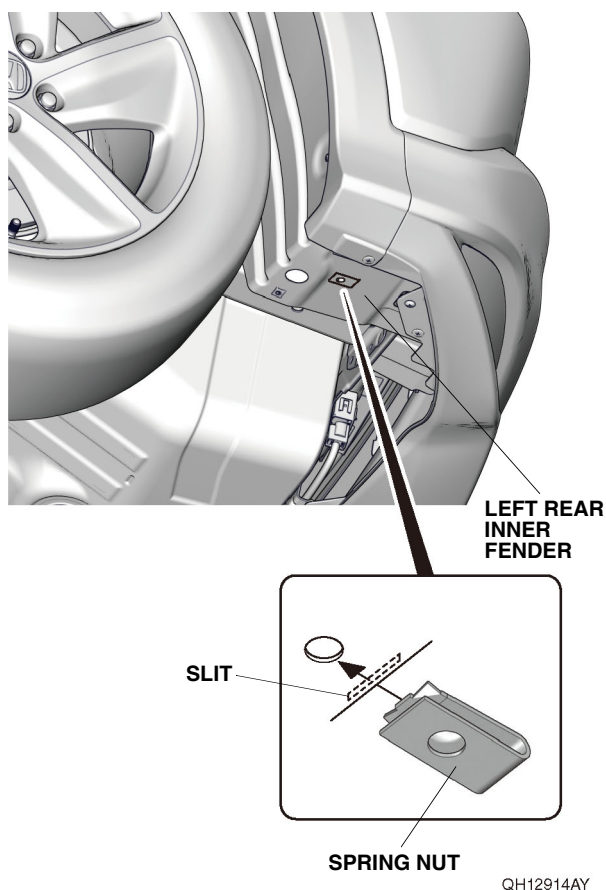
3. Secure the left front splash guard with three self-tapping screws in the order shown below.  
NOTE: Make sure there is no gap between the left front splash guard and the vehicle body. If there is a gap, loosen the self-tapping screws, hold the splash guard against the body, and retighten the screws.



4. Remove the two self-tapping screws.

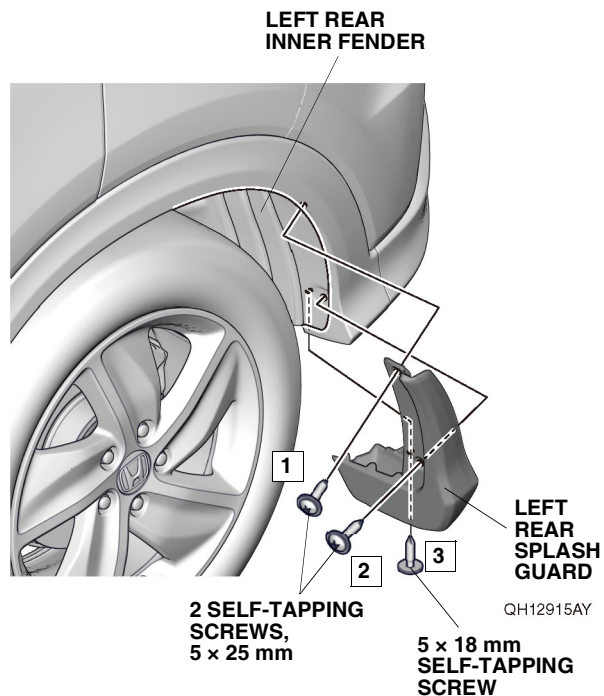


5. Install one spring nut on the left rear inner fender. **NOTE:** Make sure to install the spring nut in the correct position and orientation.



6. Secure the left rear splash guard with two 5 x 25 mm self-tapping screws and one 5 x 18 mm self-tapping screw in the order shown below.

**NOTE:** Make sure there is no gap between the left rear splash guard and the vehicle body. If there is a gap, loosen the self-tapping screws, hold the splash guard against the body, and retighten the screws.



7. Turn the steering wheel fully clockwise, and repeat steps 2 through 6 on the right side of the vehicle.