



HONDA INSTALLATION INSTRUCTIONS

Accessory
AUTOMATIC DAY/NIGHT
MIRROR

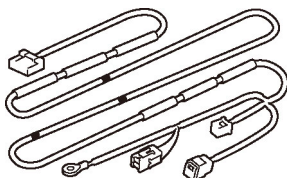
Application
2021 HR-V

Publications No.
VERSION 1
Issue Date
SEP 2020

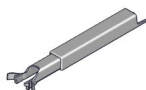
PARTS LIST

Attachment Kit
P/N 08V03-T7A-100A
P/N 08V03-T7A-100B

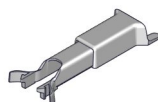
*: The part differs depending on the kit.
Automatic day/night mirror harness



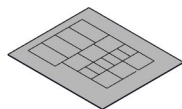
* Harness cover
(P/N 08V03-T7A-100A)



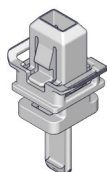
* Harness cover
(P/N 08V03-T7A-100B)



Fuse label



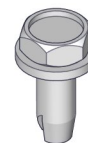
Clip



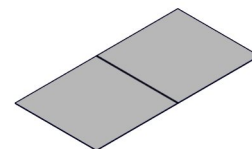
8 Wire ties



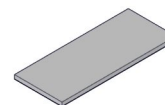
Ground bolt



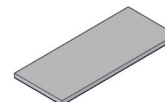
Aluminum tape



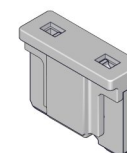
* Urethane tape
(P/N 08V03-T7A-100A)



* 2 Urethane tapes
(P/N 08V03-T7A-100B)
(Some may not be used)



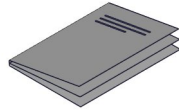
15A Fuse
(May not be used)



* Harness clip
(P/N 08V03-T7A-100B)



Accessory User's Information Manual



Service Parts

Automatic day/night mirror



TOOLS AND SUPPLIES REQUIRED

Flat-tip screwdriver

Ratchet

10 mm Socket

Isopropyl alcohol

Shop towel

Diagonal cutters

Torque wrench

T-20 TORX bit

Masking tape

10 mm Open end wrench

White marker

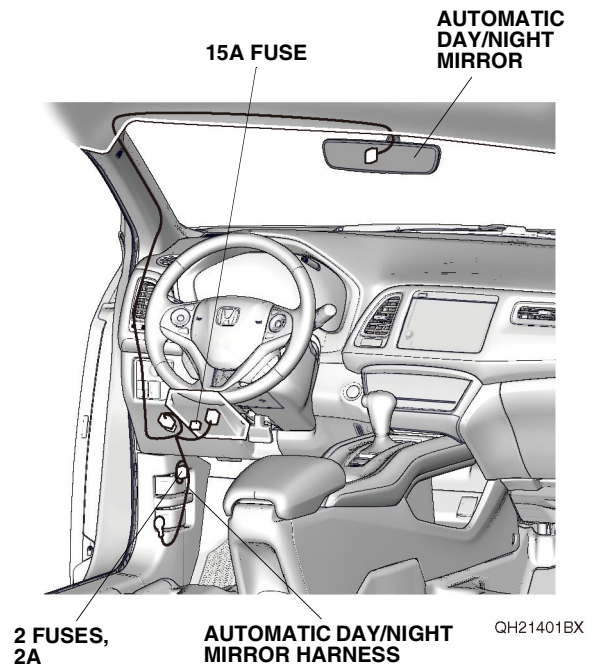
Ruler

Scissors

The following tools are available through the Honda Tool and Equipment Program. On the iN, click on Service > Service Bay > Tool and Equipment Program, then enter the number under "Search." Or, call 888-424-6857.

- Trim Tool Set (T/N SOJATP2014)
- Plastic Trim Tool (T/N SILTRIMTL10)

Illustration of the Automatic Day/Night Mirror in the Vehicle



INSTALLATION

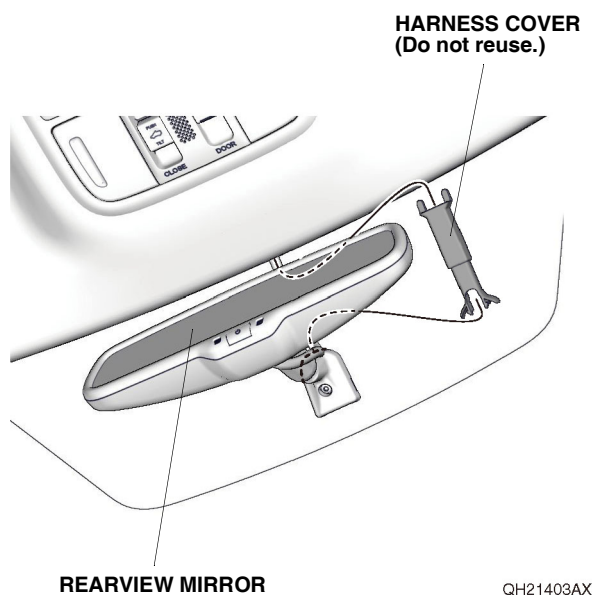
Customer Information: The information in this installation instruction is intended for use only by skilled technicians who have the proper tools, equipment, and training to correctly and safely add equipment to your vehicle. These procedures should not be attempted by "do-it-yourselfers."

1. Disconnect the negative cable from the battery.

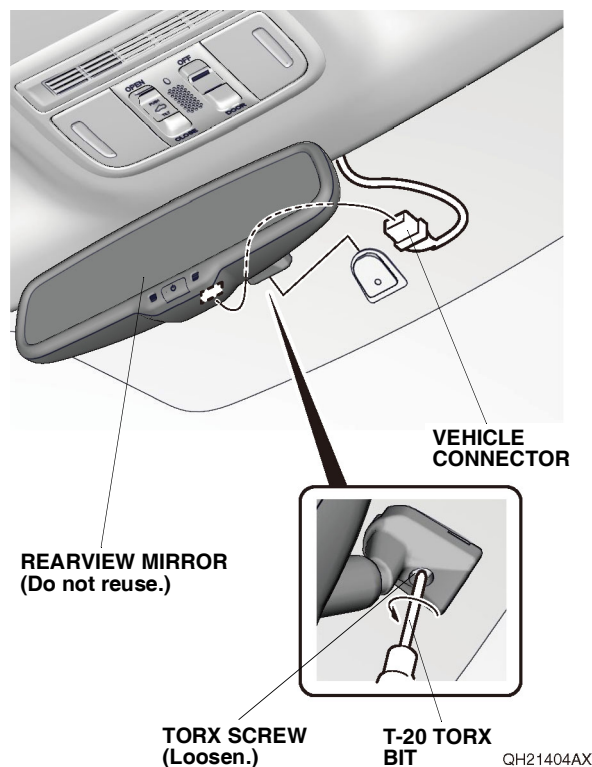
If the vehicle is equipped with the automatic day/night mirror, continue with step 2; otherwise, go to step 4.

With automatic day/night mirror

2. Remove the harness cover.

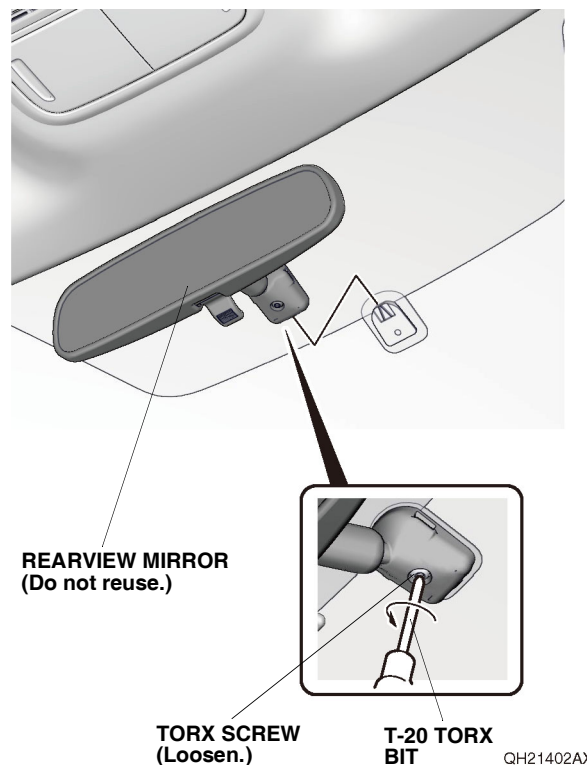


3. Loosen the TORX screw. Remove the rearview mirror, and unplug the vehicle connector. Go to step 5.



Without automatic day/night mirror

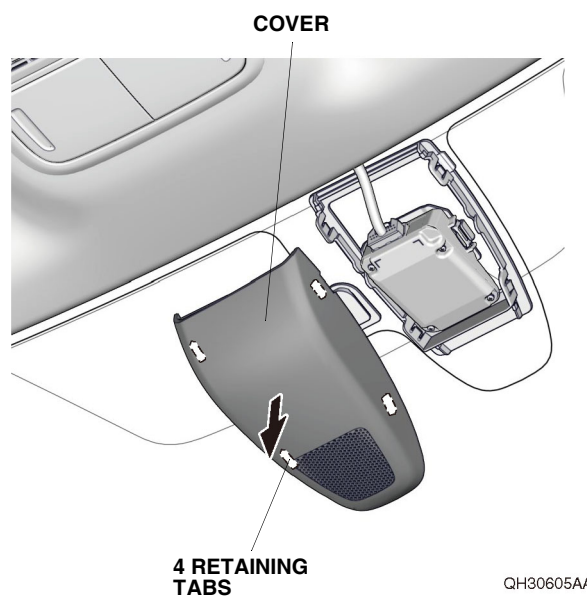
4. Loosen the TORX screw, and remove the rearview mirror.



If the vehicle is equipped with the Honda Sensing®, continue with step 5; otherwise, go to step 6.

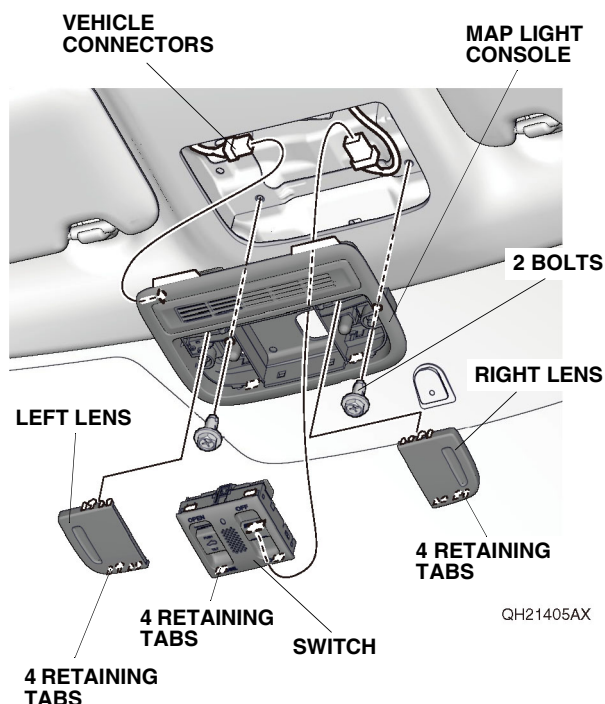
With Honda Sensing®

5. Remove the cover.

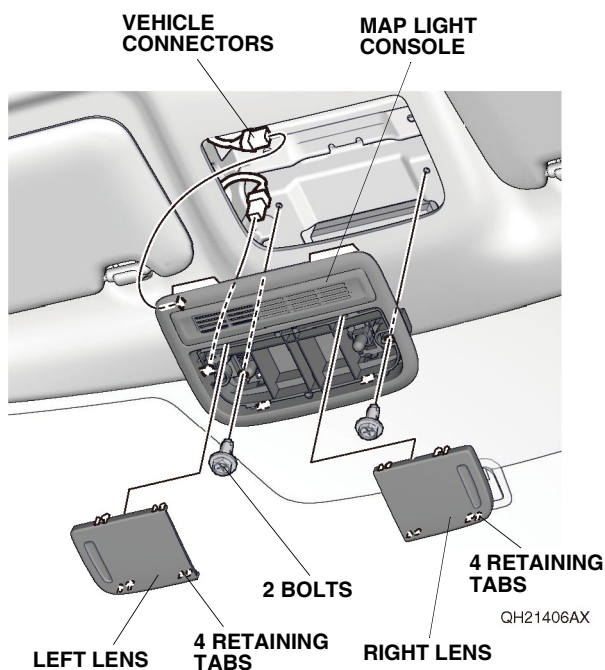


6. Remove the left and right lenses, and remove the two bolts.

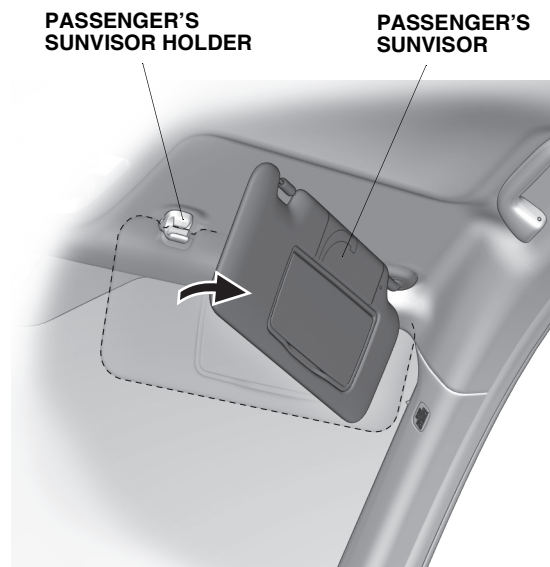
With moonroof: Remove the map light console. Then, unplug the vehicle connectors, and remove the switch.



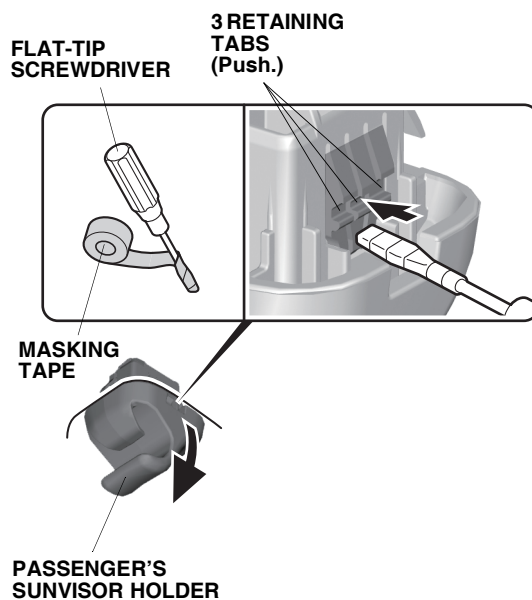
Without moonroof: Remove the map light console, and unplug the vehicle connectors.



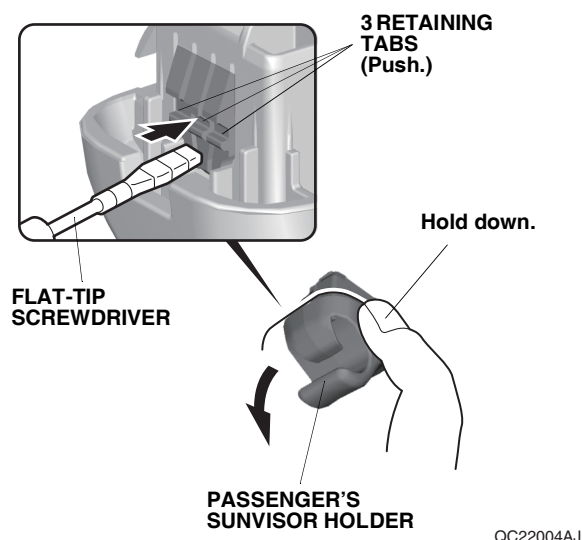
7. Release the passenger's sunvisor.



8. Remove the passenger's sunvisor holder:
- Wrap masking tape around the tip of a flat-tip screwdriver.
 - Release three retaining tabs on the passenger's sunvisor holder.

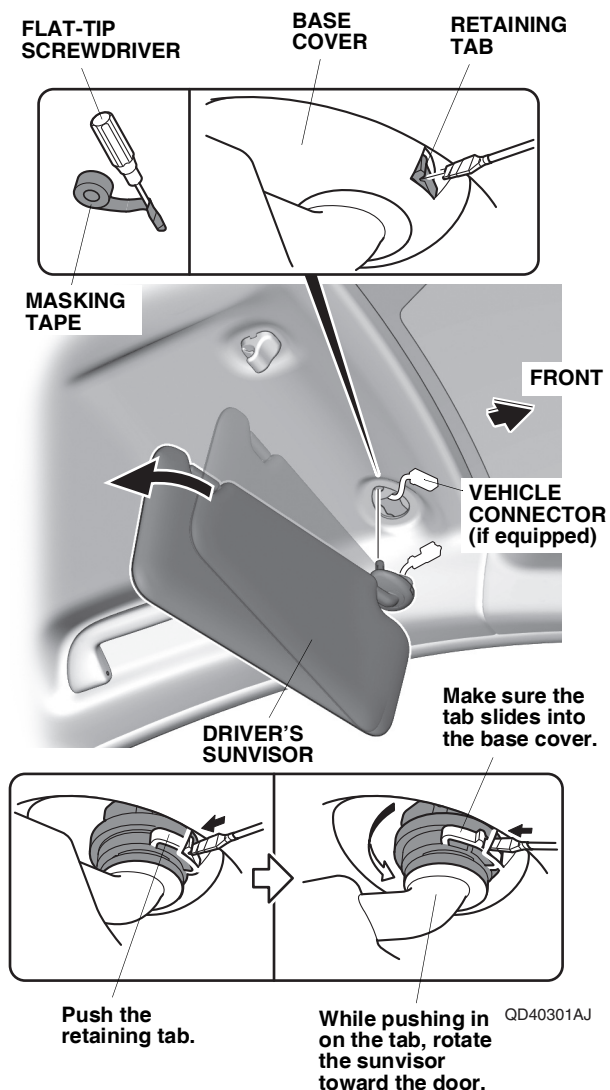


- While holding down the passenger's sunvisor holder as shown, use a flat-tip screwdriver wrapped with masking tape to remove the passenger's sunvisor holder.



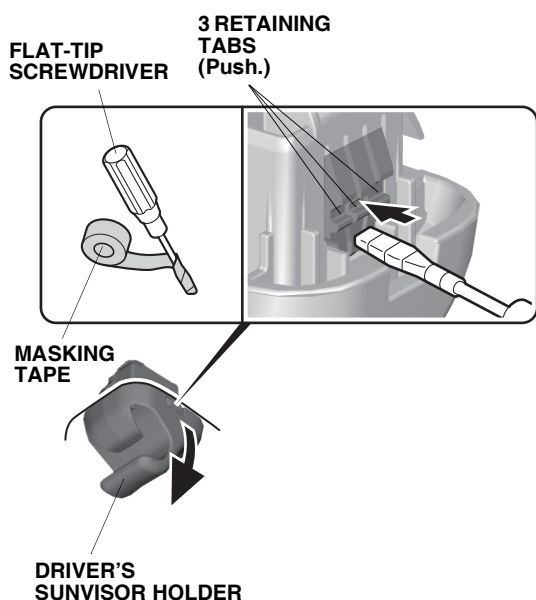
9. Remove the driver's sunvisor:

- Pivot the driver's sunvisor downward, and release it from the driver's sunvisor holder.
 - Wrap masking tape around the tip of a flat-tip screwdriver.
 - Locate the slot in the base cover, and insert the flat-tip screwdriver into the slot. Push in and hold the retaining tab.
 - While holding the retaining tab, push up on the sunvisor and rotate it toward the door.
- NOTE: If the retaining tab does not stay pushed in, return the sunvisor to its original position and repeat this step.



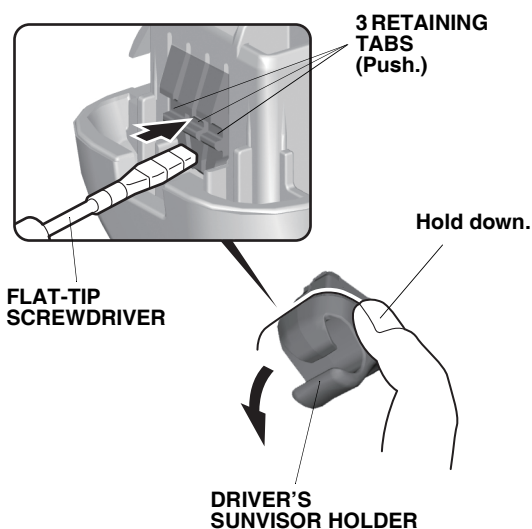
10. Remove the driver's sunvisor holder:

- Wrap masking tape around the tip of a flat-tip screwdriver.
- Release three retaining tabs on the driver's sunvisor holder.



QC22003BJ

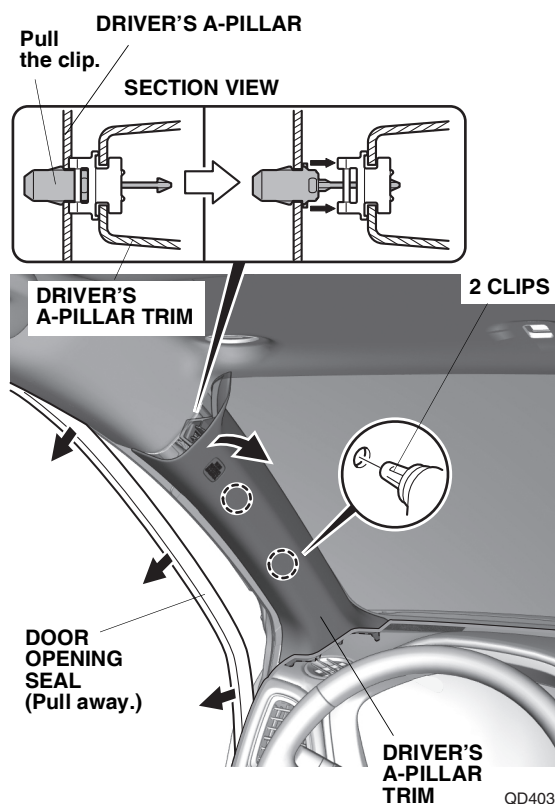
- While holding down the driver's sunvisor holder as shown, use a flat-tip screwdriver wrapped with masking tape to remove the driver's sunvisor holder.



QC22004AJ

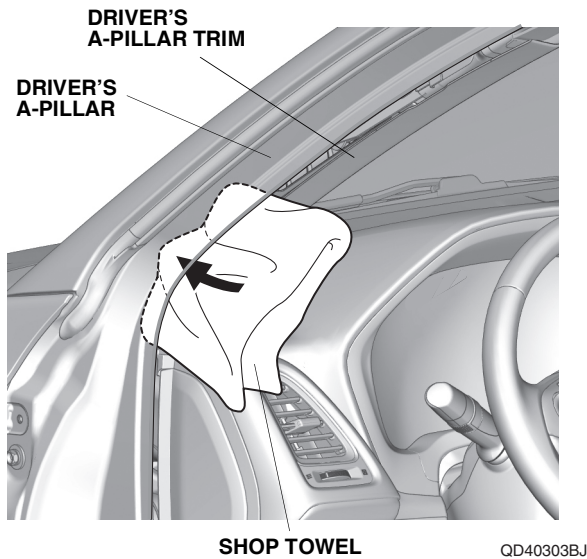
11. Remove the driver's A-pillar trim:

- Pull away the door opening seal from the driver's A-pillar trim.
- Pull out on the driver's A-pillar trim to release three clips.

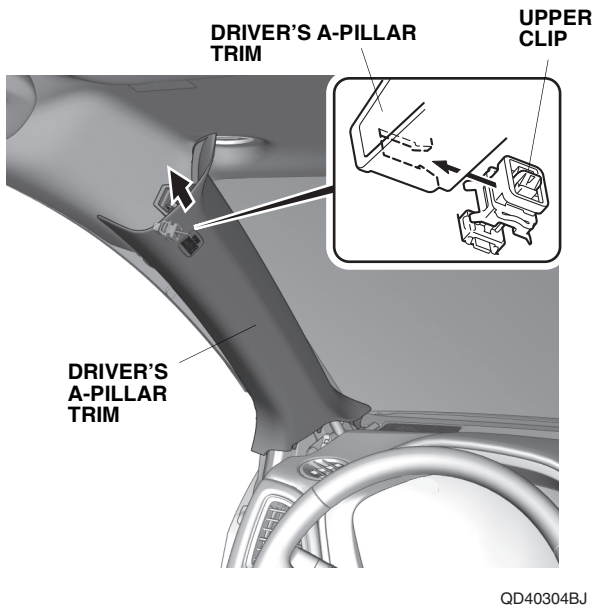


QD40302BJ

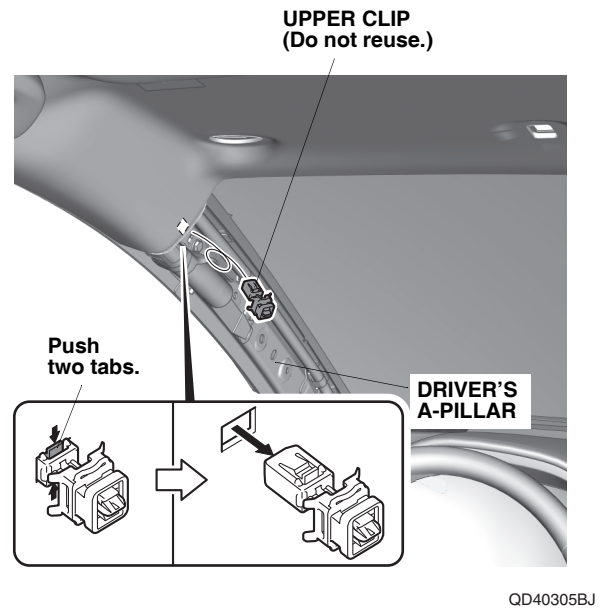
- To prevent clips from falling into the body panel area, carefully insert a shop towel between the driver's A-pillar and the driver's A-pillar trim.



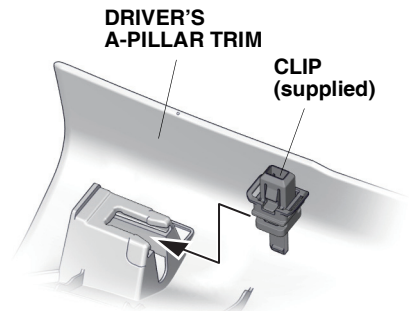
- Slide the driver's A-pillar trim upward, and remove the driver's A-pillar trim.
- Remove the shop towel and any clips.



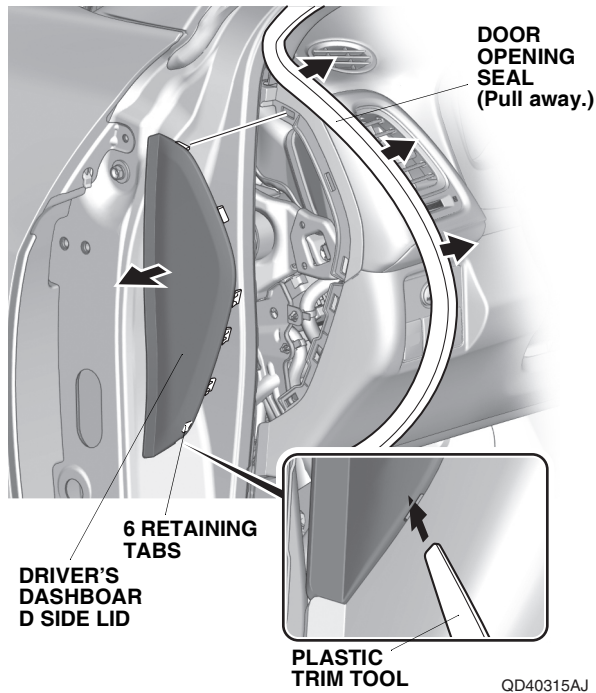
- Remove the remaining upper clip from the driver's A-pillar.



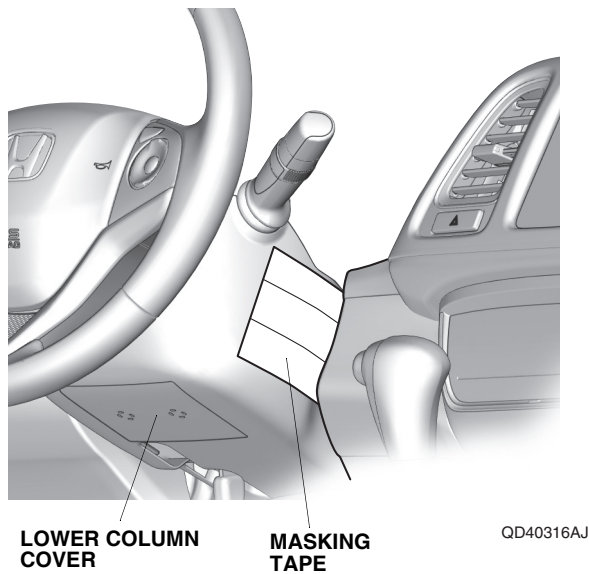
- Install the new clip to the driver's A-pillar trim.



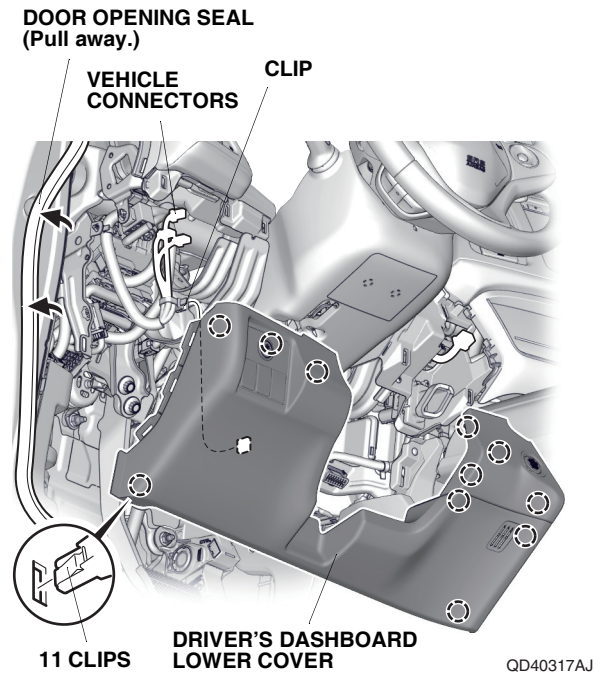
14. Pull away the door opening seal, and remove the driver's dashboard side lid.



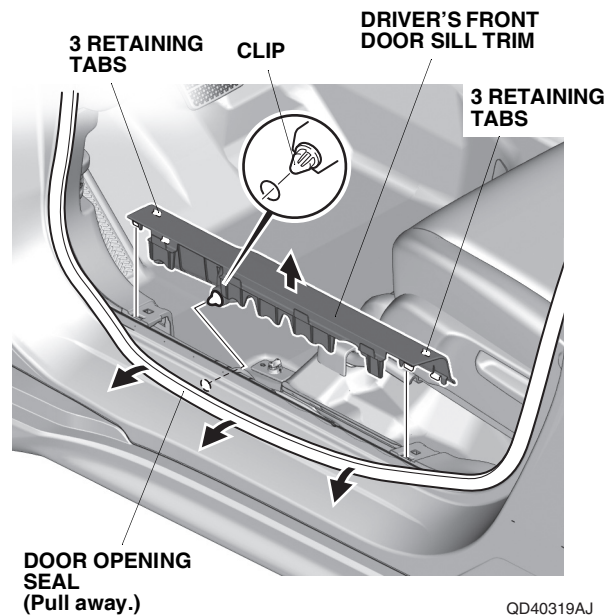
15. Apply masking tape to the lower column cover.



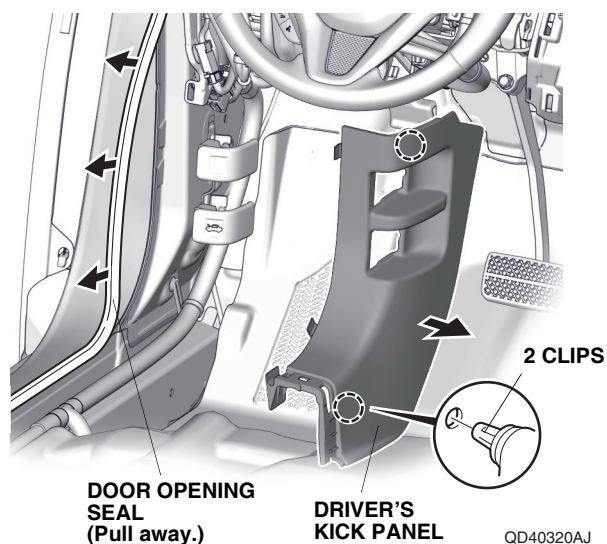
16. Pull away the door opening seal. Remove the driver's dashboard lower cover, and unplug the vehicle connectors.



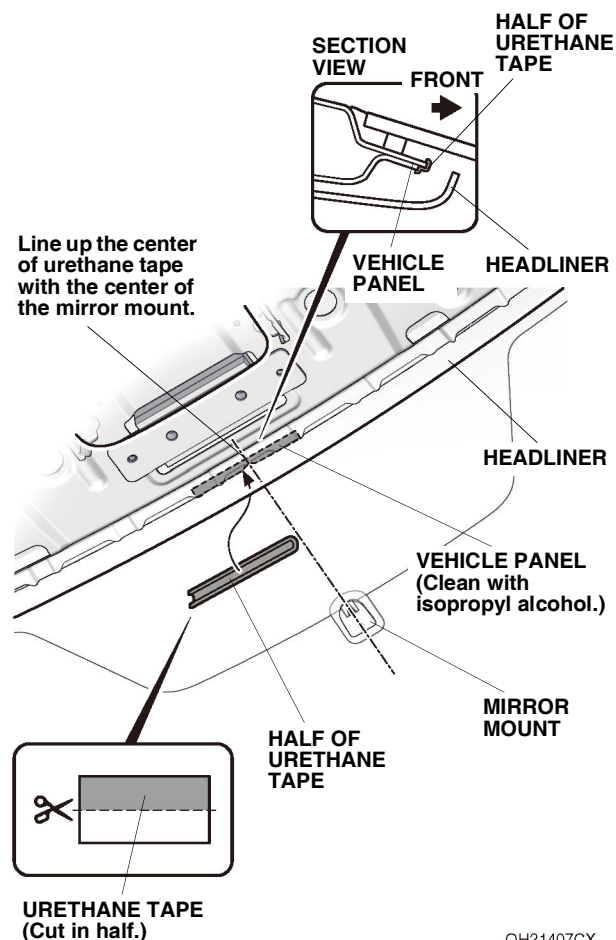
17. Pull away the door opening seal, and remove the driver's front door sill trim.



18. Pull away the door opening seal, and remove the driver's kick panel.

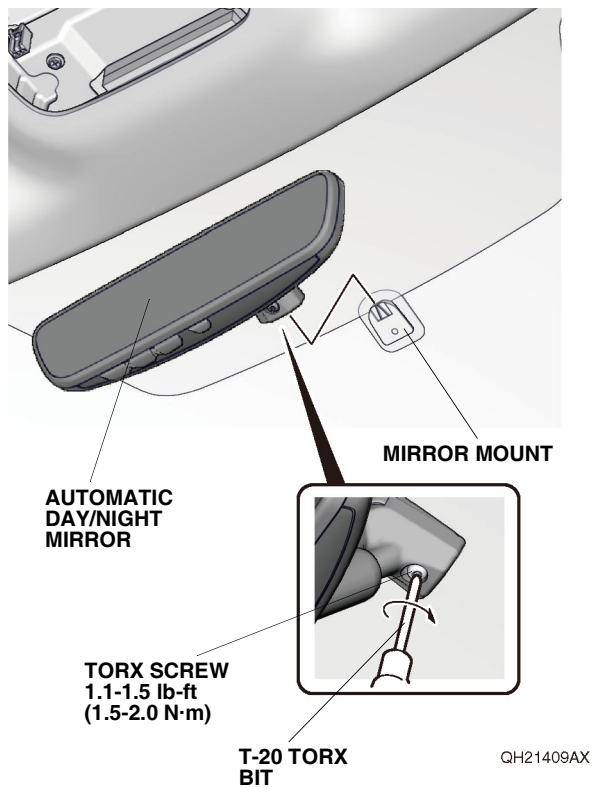


19. Using isopropyl alcohol on a shop towel, thoroughly clean the vehicle panel where the urethane tape will attach.

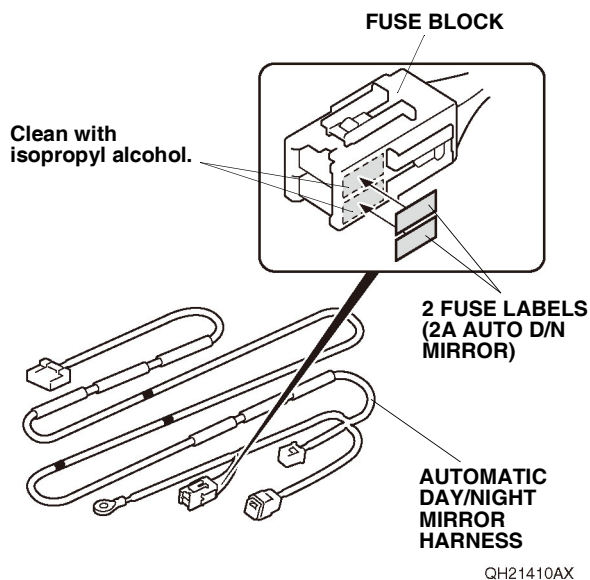


20. Using scissors, cut one piece of urethane tape in half. Attach the one piece to the vehicle panel as shown.
- NOTE:** Be careful not to crease the headliner.

21. Install the automatic day/night mirror to the mirror mount as shown, and tighten the TORX screw. Torque the TORX screw to 1.1-1.5 lb-ft (1.5-2.0 N·m).

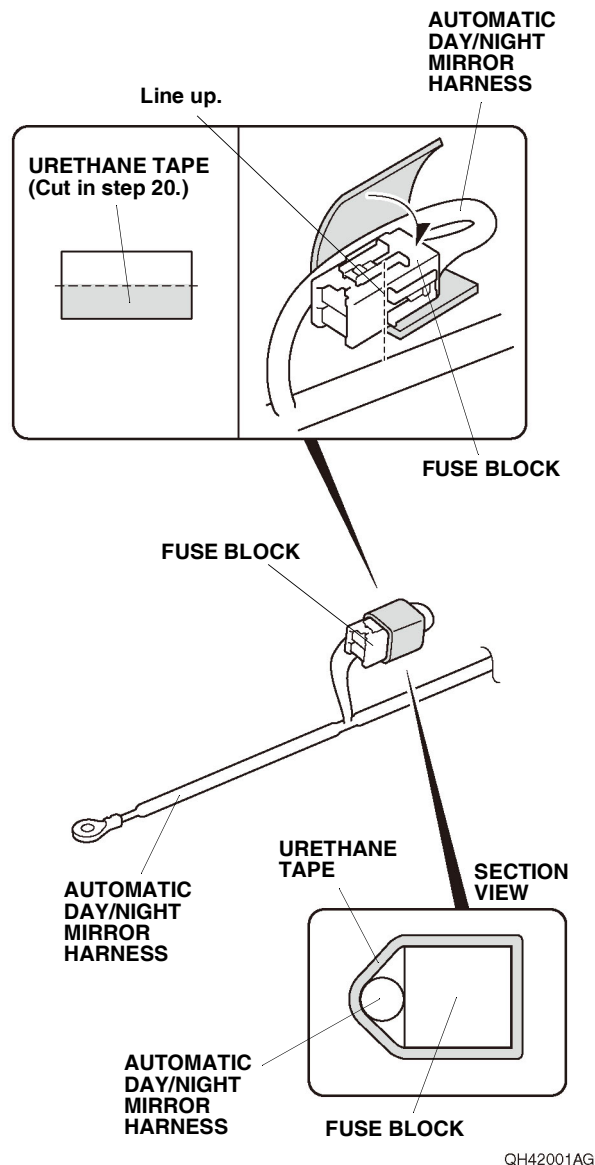


22. Using isopropyl alcohol on a shop towel, thoroughly clean the fuse block where the fuse labels will attach.

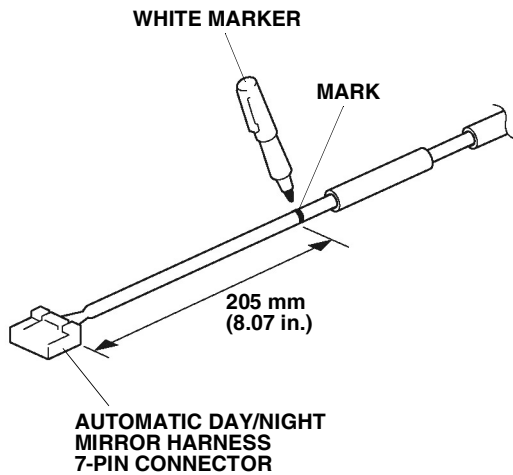


23. Attach the two fuse labels (2A AUTO D/N MIRROR) to the fuse block on the automatic day/night mirror harness.

24. Attach the urethane tape cut in step 20 to the fuse block on the automatic day/night mirror harness and automatic day/night mirror harness as shown.



25. Using a white marker, mark the automatic day/night mirror harness as shown.

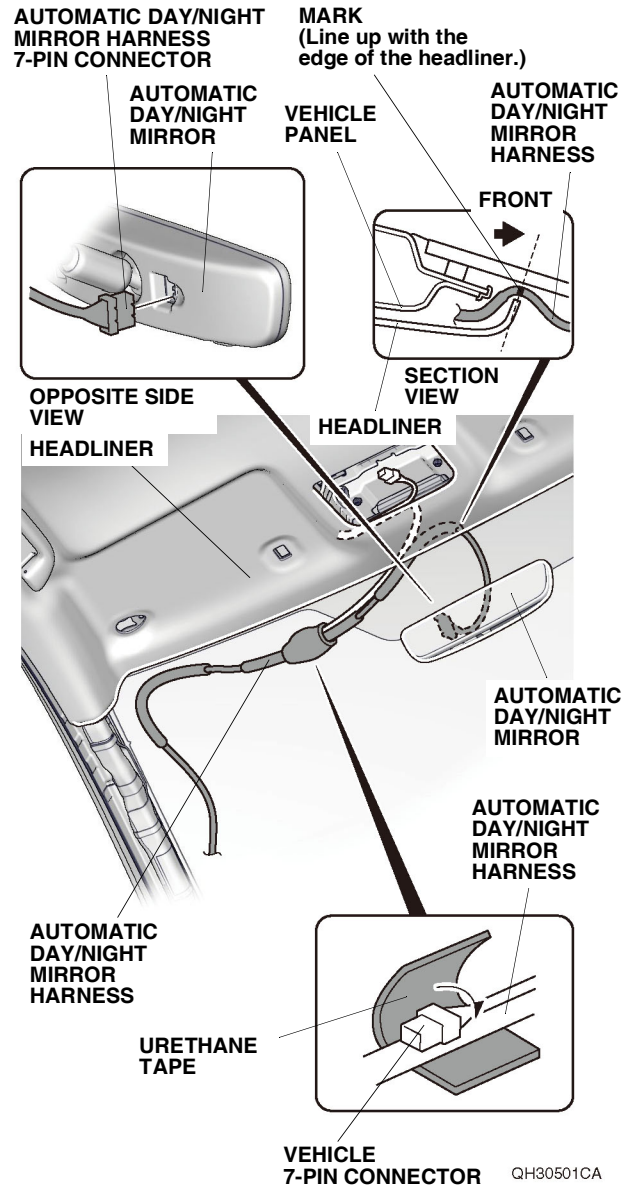


QDD0506AJ

If the vehicle is equipped with the automatic day/night mirror, continue with step 26; otherwise, go to step 30.

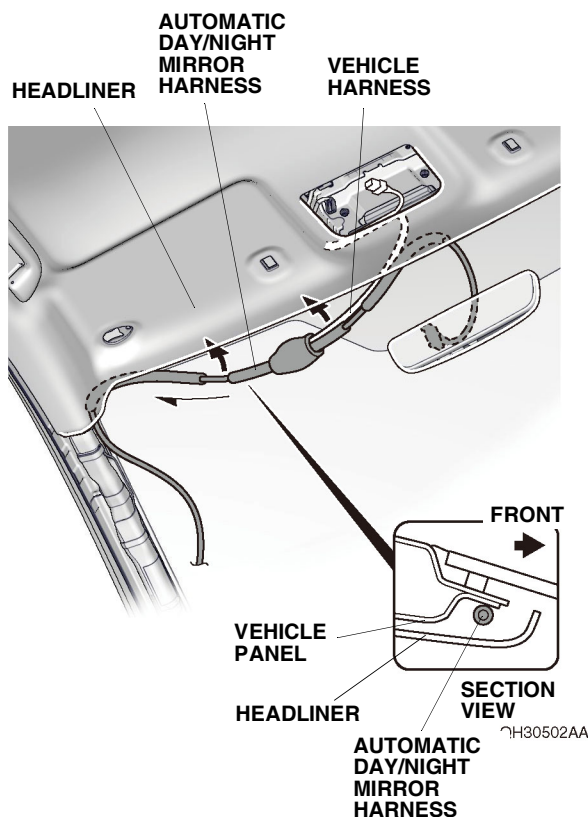
With automatic day/night mirror

26. Plug the automatic day/night mirror harness 7-pin connector into the automatic day/night mirror.



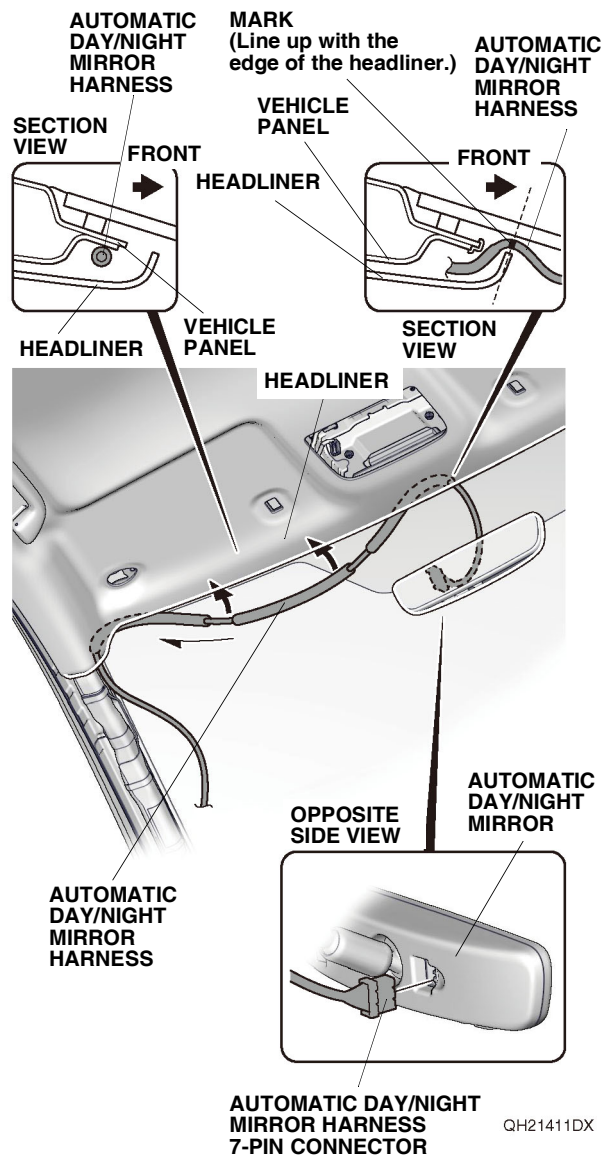
27. Line up the mark on the automatic day/night mirror harness with the edge of the headliner.
28. Secure the vehicle 7-pin connector to the automatic day/night mirror harness with one piece of urethane tape as shown.

29. Gently pull back the headliner, and tuck the automatic day/night mirror harness and vehicle harness behind the headliner. Go to step 32.
NOTE: Be careful not to crease the headliner.



Without automatic day/night mirror

30. Plug the automatic day/night mirror harness 7-pin connector into the automatic day/night mirror.

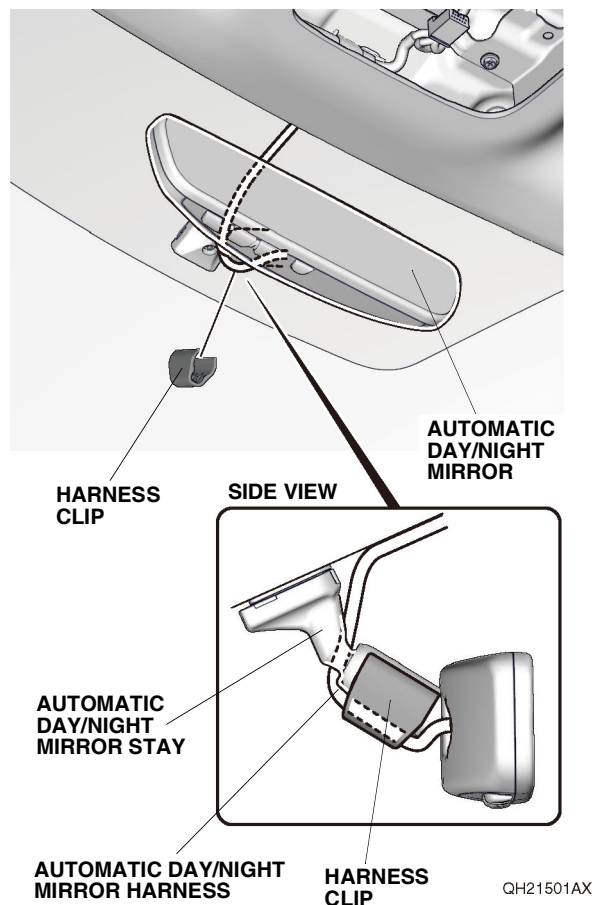


31. Gently pull back the headliner, and tuck the automatic day/night mirror harness behind the headliner. Line up the mark on the automatic day/night mirror harness with the edge of the headliner.
NOTE: Be careful not to crease the headliner.

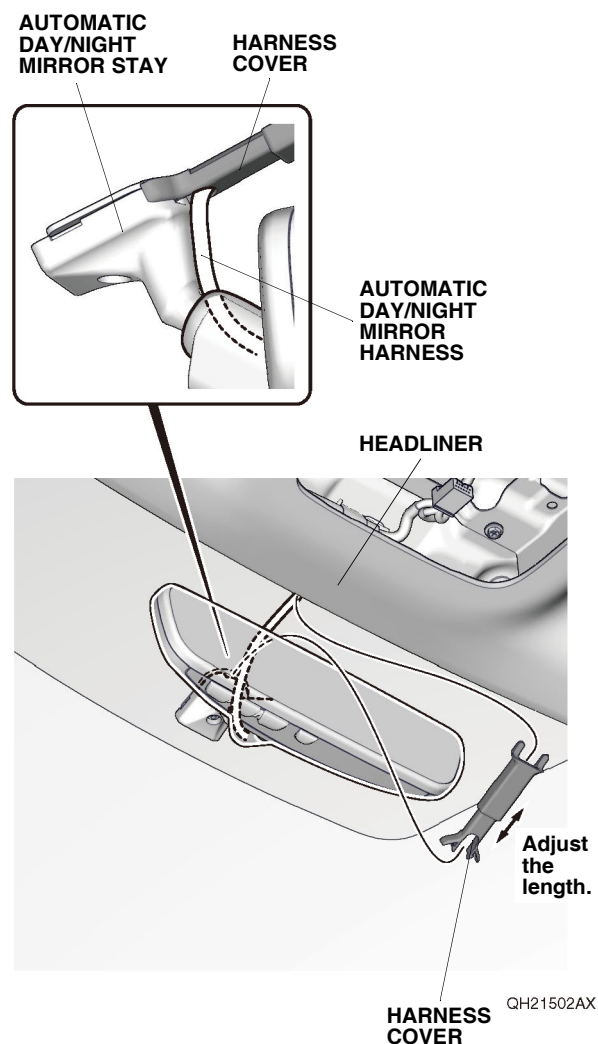
If the vehicle is equipped with the moonroof, continue with step 32; otherwise, go to step 34.

With moonroof

32. Secure the automatic day/night mirror harness to the automatic day/night mirror stay with the harness clip.

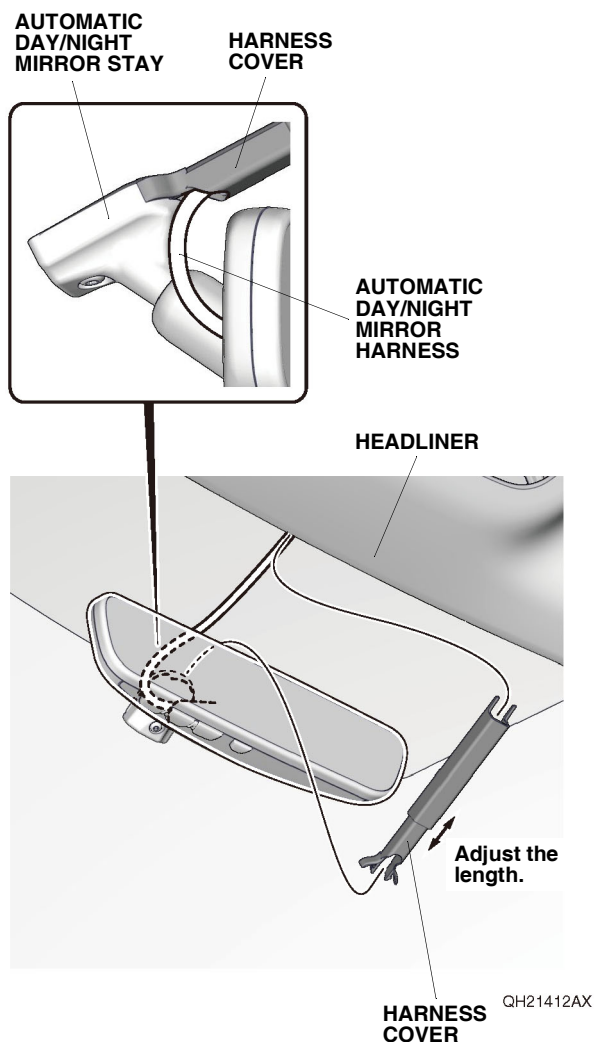


33. Route the automatic day/night mirror harness through the groove in the harness cover. Secure the harness cover to the automatic day/night mirror stay. Slide the harness cover behind the headliner. Go to step 35.

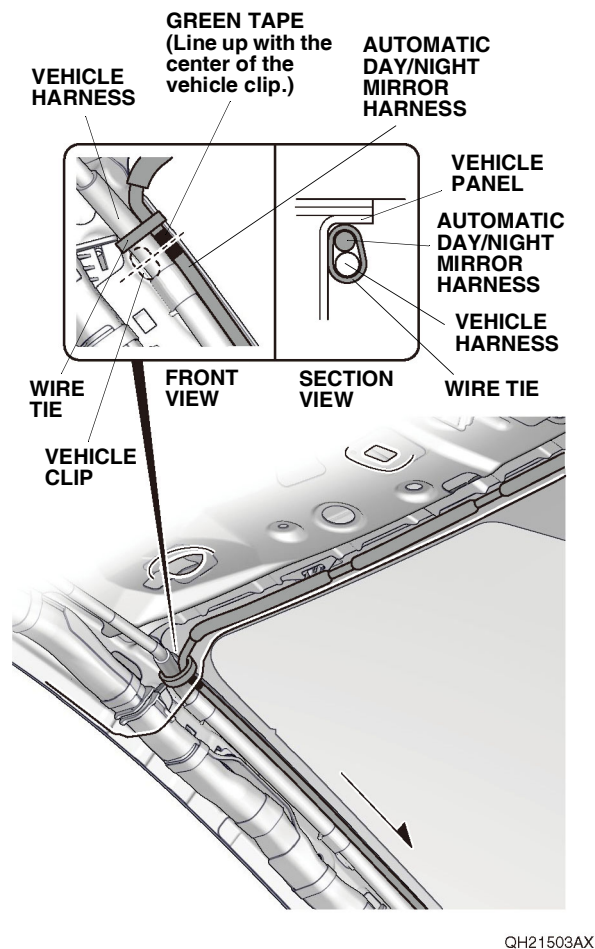


Without Moonroof

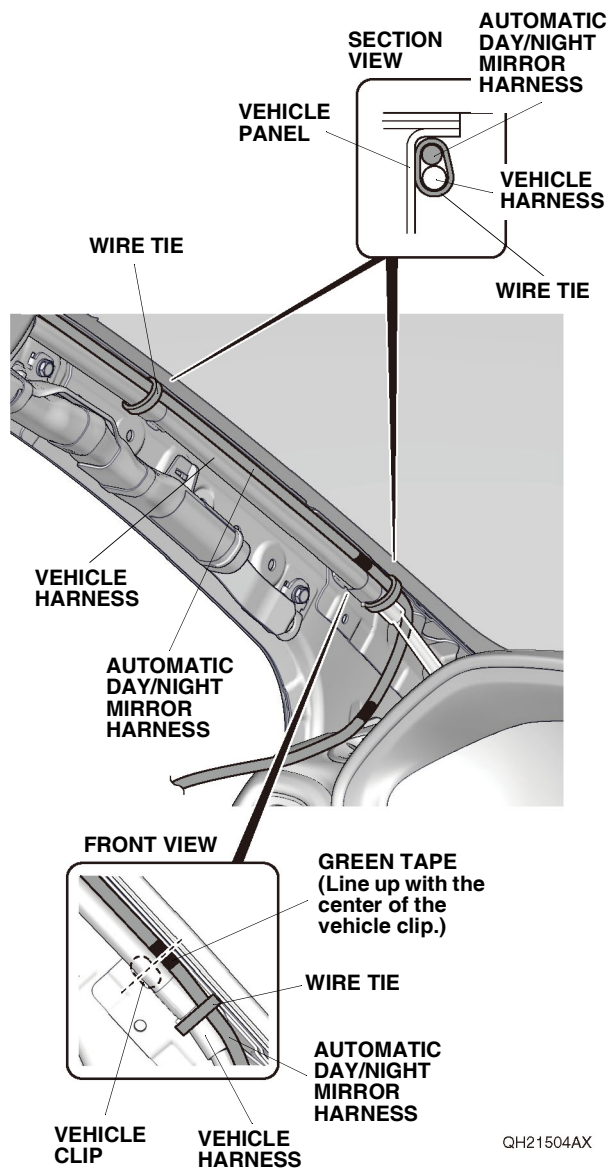
34. Route the automatic day/night mirror harness through the groove in the harness cover. Secure the harness cover to the automatic day/night mirror stay. Slide the harness cover behind the headliner.



35. Route the automatic day/night mirror harness down the A-pillar as shown. Line up the green tape on the automatic day/night mirror harness with the vehicle clip, and secure the automatic day/night mirror harness to the vehicle harness with one wire tie. **NOTE:** Do not cover the installation holes of the driver's A-pillar trim.

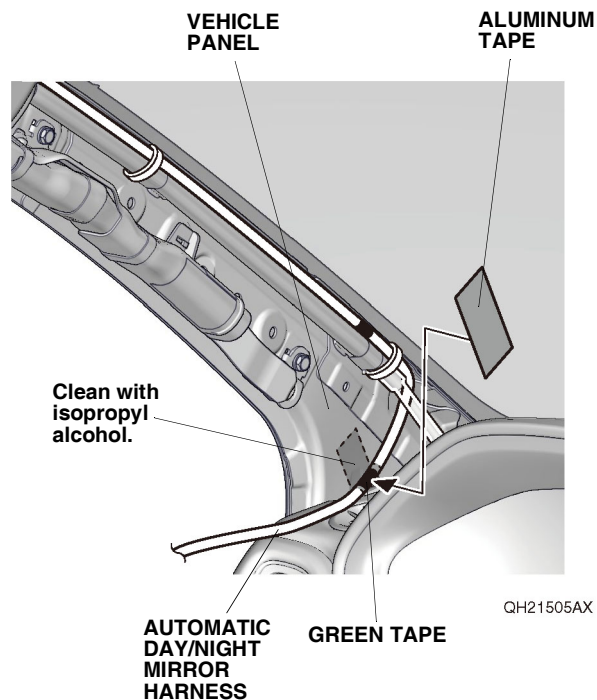


36. Line up the green tape on the automatic day/night mirror harness with the vehicle clip, and secure the automatic day/night mirror harness to the vehicle harness with one wire tie.

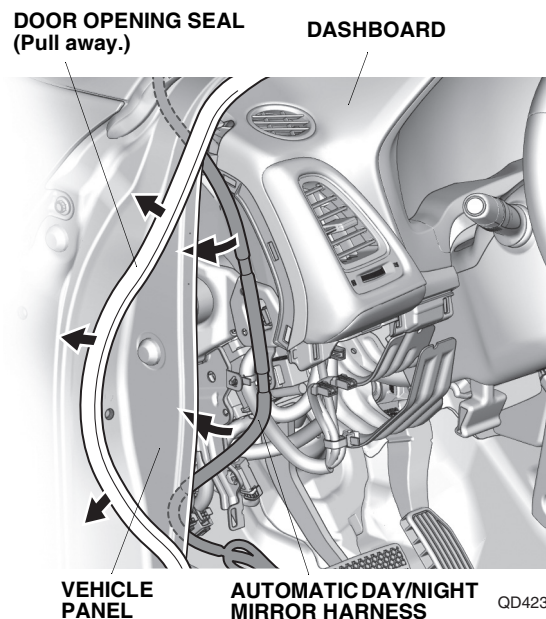


37. Secure the automatic day/night mirror harness to the vehicle harness with one wire tie.

38. Using isopropyl alcohol on a shop towel, thoroughly clean the vehicle panel where the aluminum tape will attach.



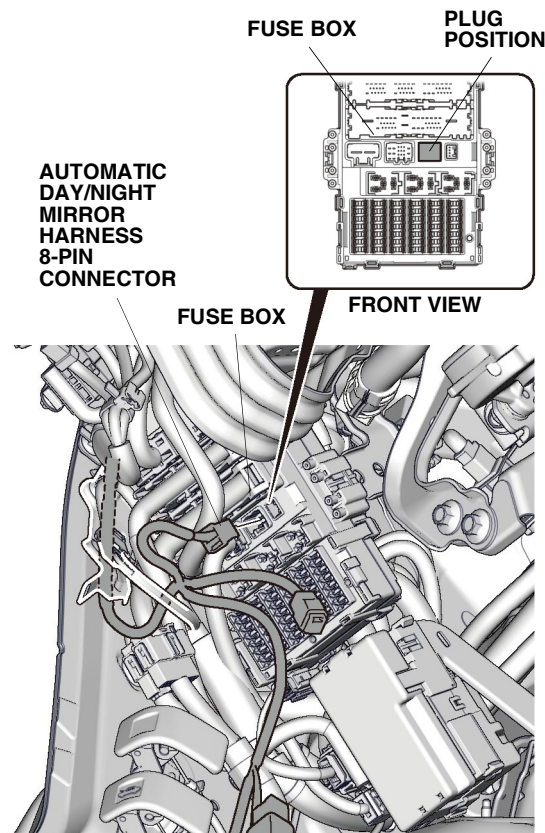
39. Secure the automatic day/night mirror harness to the vehicle panel with one piece of aluminum tape at the green tape.
40. Pull away the door opening seal. Route the automatic day/night mirror harness down next to the dashboard, and tuck the automatic day/night mirror harness between the vehicle panel and the dashboard.



If the vehicle is equipped with the another accessory harness 8-pin connector, go to step 42; otherwise, continue with step 41.

Without another accessory harness 8-pin connector

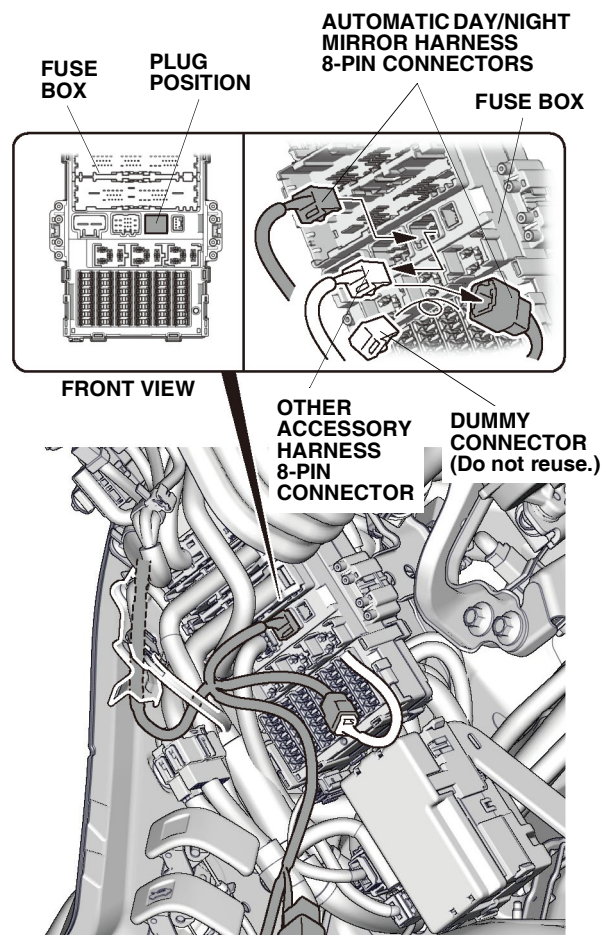
41. Plug the automatic day/night mirror harness 8-pin connector into the fuse box. Go to step 43.



QH21506BX

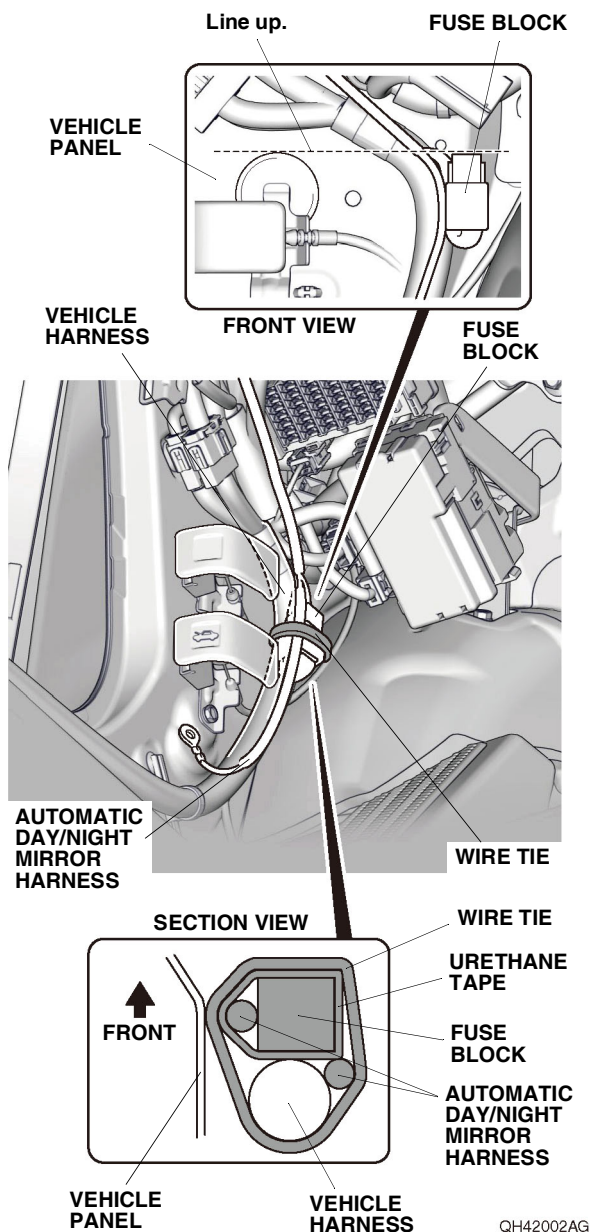
With another accessory harness 8-pin connector

42. Unplug the other accessory harness 8-pin connector from the fuse box, then plug the automatic day/night mirror harness 8-pin connector into the fuse box. Remove the dummy connector from the automatic day/night mirror harness 8-pin connector, and plug the other accessory harness 8-pin connector into it.

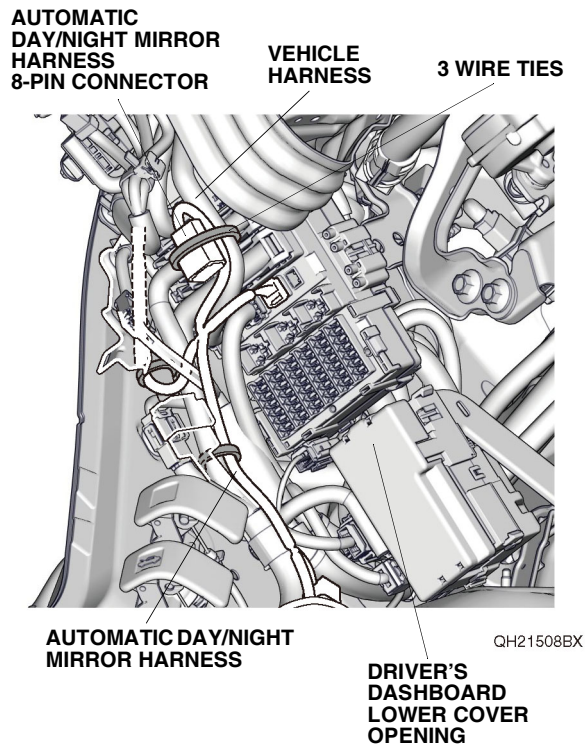


QH21507BX

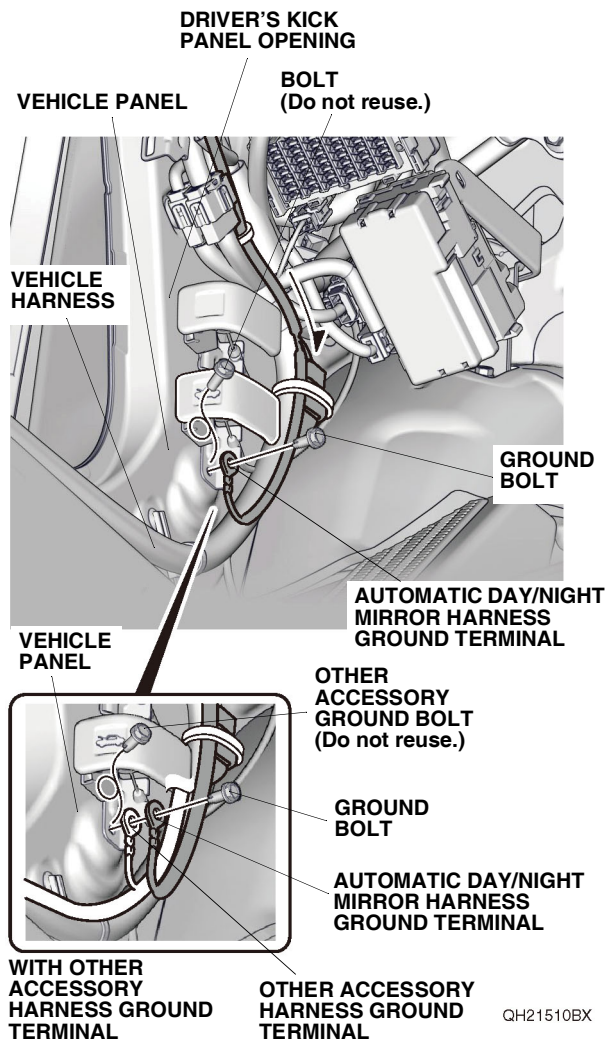
43. Secure the fuse block on the automatic day/night mirror harness and automatic day/night mirror harness to the vehicle harness with one wire tie.



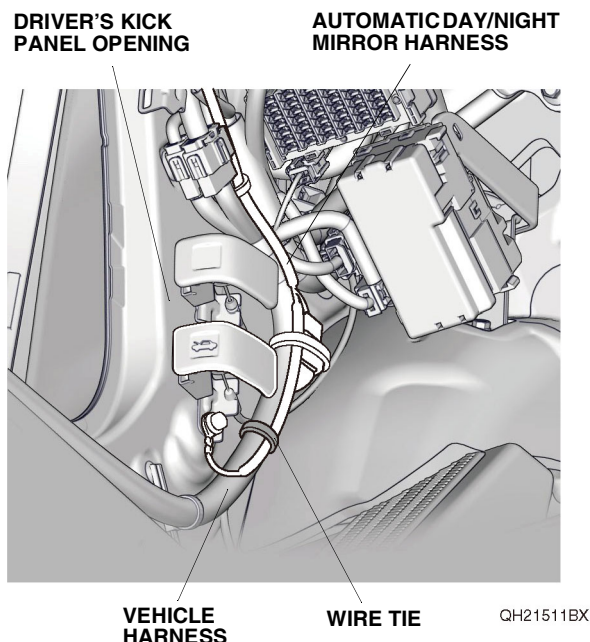
44. Secure the automatic day/night mirror harness 8-pin connector and automatic day/night mirror harness to the vehicle harness with three wire ties.



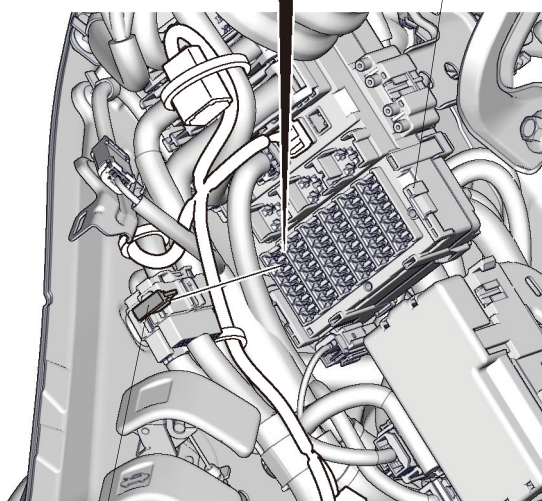
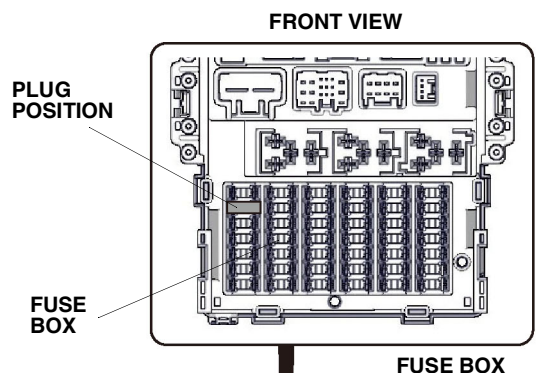
45. Route the automatic day/night mirror harness along the vehicle harness. Remove the bolt, and secure the automatic day/night mirror harness ground terminal to the vehicle panel with one ground bolt. If the vehicle is equipped with another accessory harness ground terminal, remove the other accessory harness ground bolt, and secure the other accessory harness ground terminal and automatic day/night mirror harness ground terminal to the vehicle panel with one ground bolt.
- NOTE:** Do not put the ground terminal caulking on top of one another.



46. Secure the automatic day/night mirror harness to the vehicle harness with one wire tie.

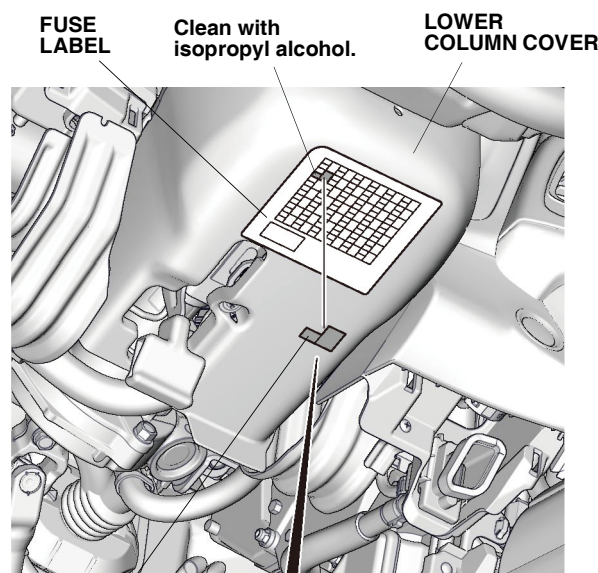


47. Plug the 15A fuse into the fuse box.
NOTE: If a 15A fuse is already installed in the fuse box, go to step 50; otherwise, plug the 15A fuse into the fuse box.



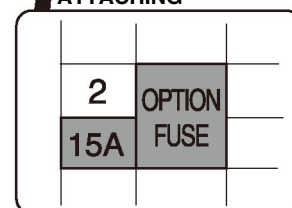
QH21512BX

48. Using isopropyl alcohol on a shop towel, thoroughly clean the fuse label where the fuse label will attach.



FUSE LABEL
(15A OPTION FUSE)

ATTACHING



QH21513AX

49. Attach the fuse label (15A OPTION FUSE) to the fuse label on the lower column cover as shown.

50. Check that all wire harnesses are routed properly and all connectors are plugged in.
51. Check the overlap between the headliner and the driver's A-pillar trim. Refer to the service information. If necessary, adjust the overlap.
52. Install all removed parts.
53. Connect the negative cable to the battery.
54. Press and hold the audio unit power button for 2 seconds to restore the audio and navi (if equipped) system functions.
55. Set the clock on the vehicles without navigation.
56. If necessary, restore the systems back to normal operation as described in the service information.

Check the Operation of the Automatic Day/ Night Mirror

57. Check that the automatic day/night mirror works as described in the Accessory User's Information Manual supplied with the automatic day/night mirror kit.