



INSTALLATION INSTRUCTIONS

Accessory
CROSSBARS
 P/N 08L04-T7S-100A

Application
 2021 HR-V

Publications No.
VERSION 1
 Issue Date
SEP 2020

PARTS LIST

Front crossbar
 (long)



Rear crossbar
 (short)



Left front cover
 (Identification mark: FR-L)



Right front cover
 (Identification mark: FR-R)



Left rear cover
 (Identification mark: RR-L)



Right rear cover
 (Identification mark: RR-R)



Left front skirt
 (Identification mark: FR-L)



Right front skirt
 (Identification mark: FR-R)



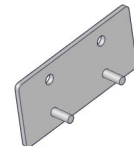
Left rear skirt
 (Identification mark: RR-L)



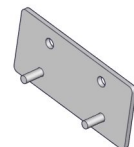
Right rear skirt
 (Identification mark: RR-R)



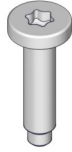
2 Left brackets
 (Identification mark: L)



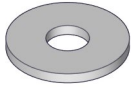
2 Right brackets
 (Identification mark: R)



8 TORX bolts



8 Washers



TOOLS AND SUPPLIES REQUIRED

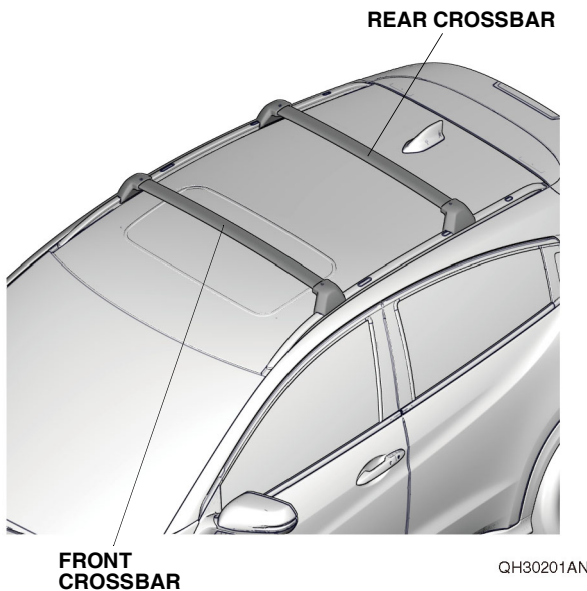
Torque wrench

T-30 TORX bit

The following tools are available through the Honda Tool and Equipment Program. On the iN, click on Service > Service Bay > Tool and Equipment Program, then enter the number under "Search." Or, call 888-424-6857.

- Trim Tool Set (T/N SOJATP2014)
- Plastic Trim Tool (T/N SILTRIMTL10)

Illustration of the Crossbars Installed on the Vehicle



INSTALLATION

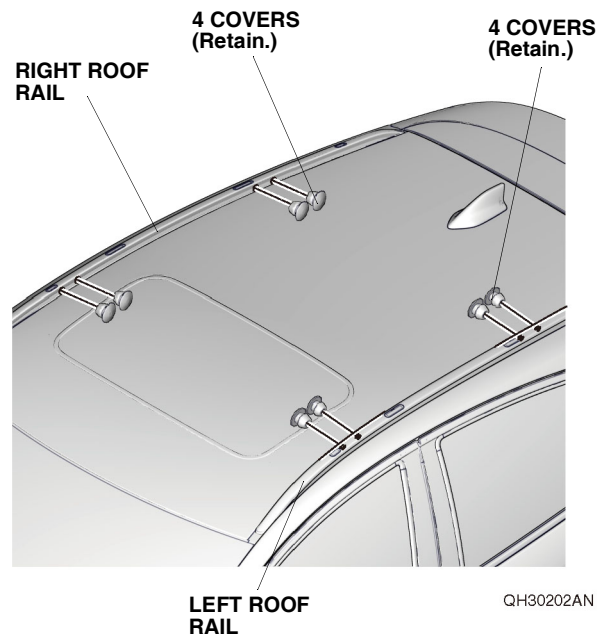
Customer Information: The information in this Installation Instruction is intended for use only by skilled technicians who have the proper tools, equipment, and training to correctly and safely add equipment to your vehicle. These procedures should not be attempted by "do-it-yourselfers."

NOTE:

- The weight of the cargo must not exceed the maximum weight capacity of 165 lbs (75 kg).
- Be careful not to damage the roof and other finished surfaces of the body when installing the crossbars.

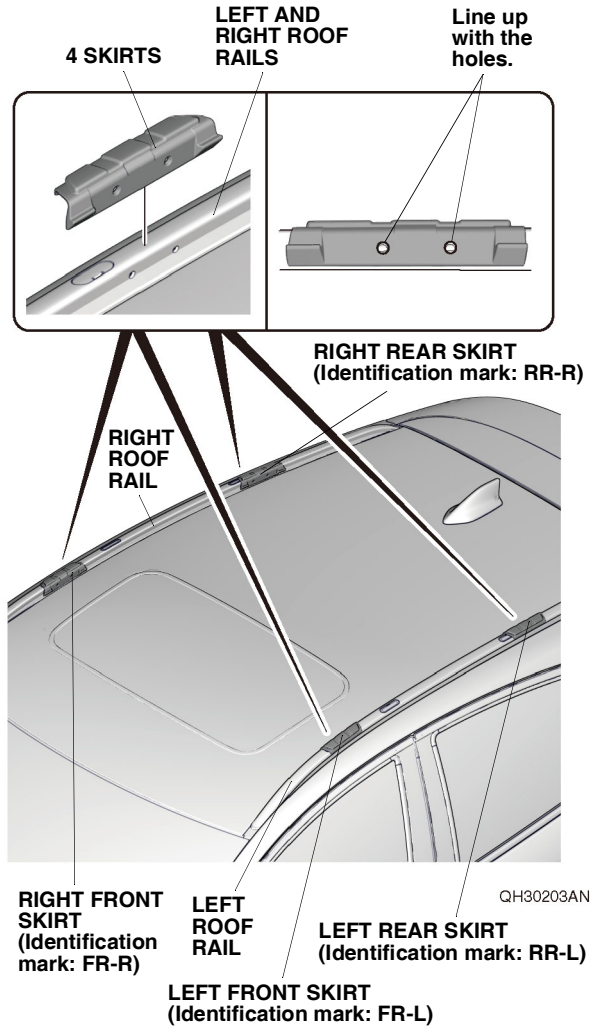
Installing the Crossbars

1. Remove the four covers on each roof rail. (Retain the covers in case the crossbars are removed.)

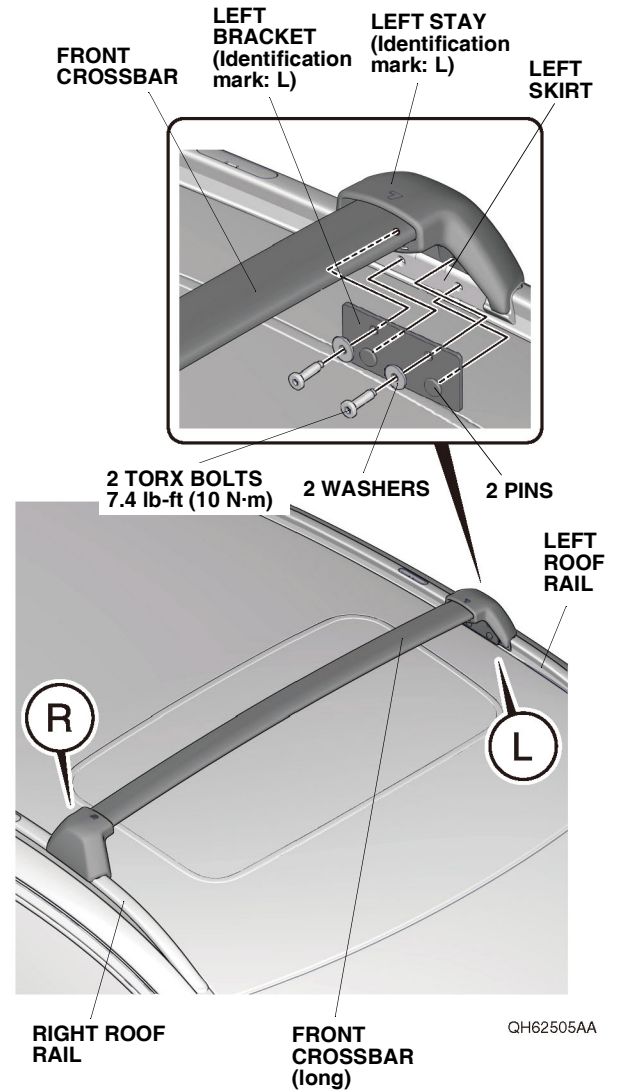


- Position each skirt to the left and right roof rails as shown.

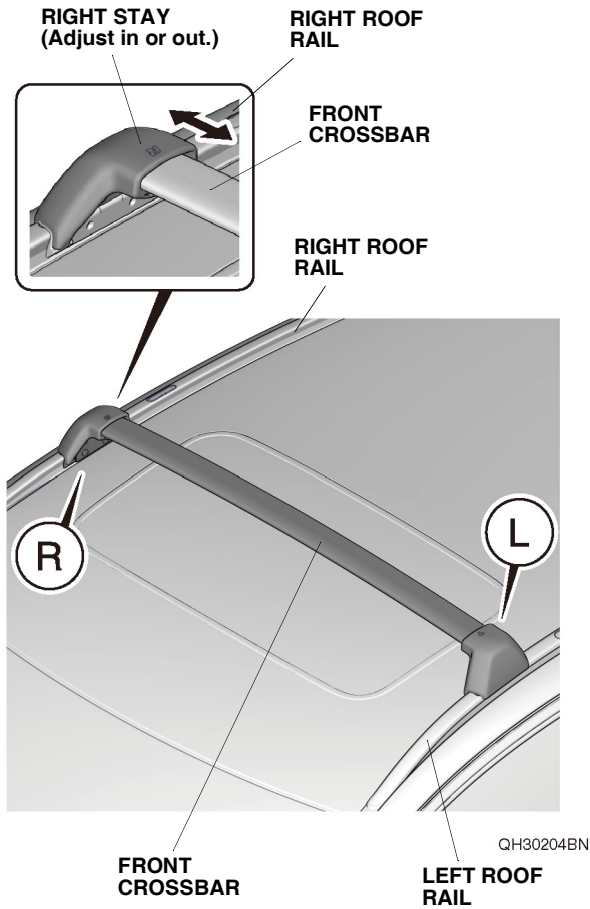
NOTE: Check the identification mark and the installation position of the skirt.



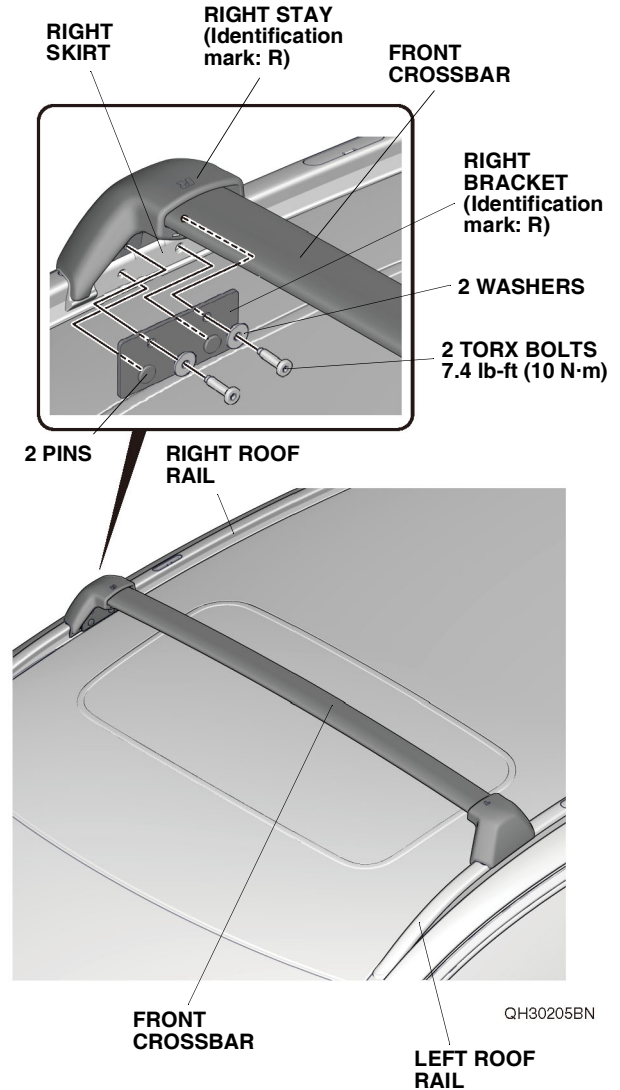
- Install the left stay to the left roof rail as shown. Secure the left stay to the left rail with two washers and two TORX bolts. Torque the TORX bolts to 7.4 lb-ft (10 N·m). NOTE: Check the identification mark and installation position of the bracket.



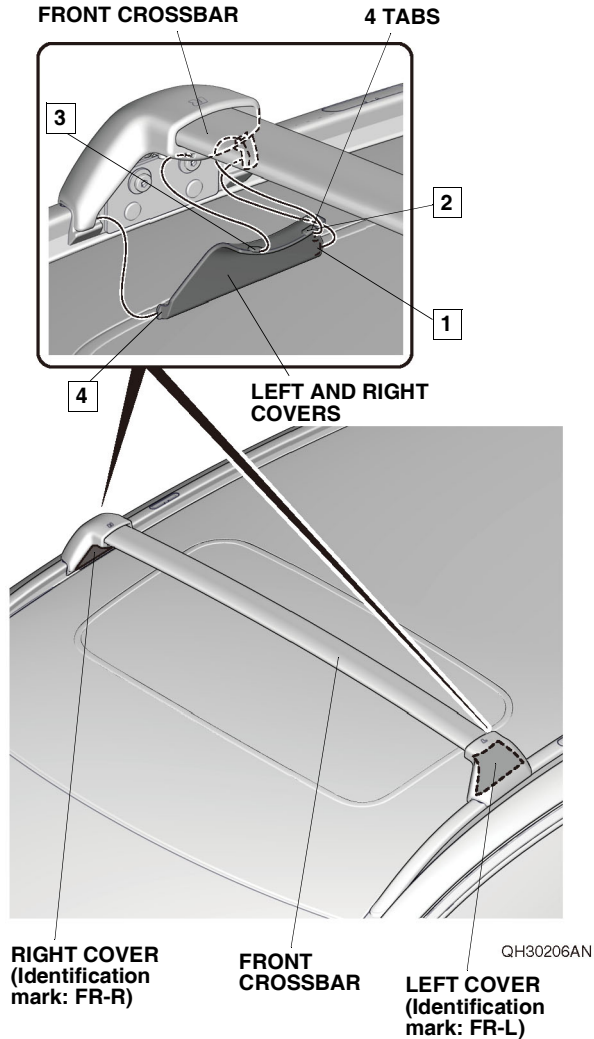
4. Adjust the right stay in or out until it fits securely into position.



5. Install the right stay to the right roof rail as shown. Secure the right stay to the right rail with two washers and two TORX bolts. Torque the TORX bolts to 7.4 lb-ft (10 N·m). NOTE: Check the identification mark and installation position of the bracket.



6. Starting with the rear lower tab, install the left and right covers as shown.
NOTE: Check the identification mark and the installation position of the cover. If you are removing the cover, release the tabs in the reverse order of the installation.



7. Repeat steps 3 through 6 on the rear crossbar.

Put a copy of these instructions in the glove box for your customer.

USE AND CARE

- Check the crossbar mounting bolts frequently, and re-tighten if necessary.
- Distribute the weight of the cargo evenly, and do not exceed the maximum weight capacity of 165 lbs (75 kg).