



INSTALLATION INSTRUCTIONS

Accessory

KEYLESS ENTRY
P/N 08E60-TK6-100

Application

2010 FIT
(BASE MODEL)

Publications No.

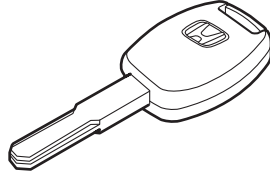
All 42188

Issue Date

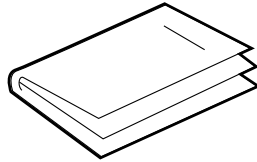
AUG 2009

PARTS LIST

Key



Accessory User's Information Manual



TOOLS REQUIRED

HDS (Honda Diagnostic System)

Key Cutter (ILCMK1COMP)

INSTALLATION

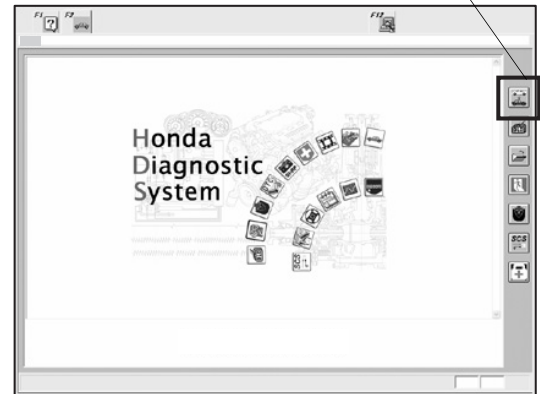
Customer Information: The information in this installation instruction is intended for use only by skilled technicians who have the proper tools, equipment, and training to correctly and safely add equipment to your vehicle. These procedures should not be attempted by "do-it-yourselfers."

1. Using the key cutter, cut this key to match the original ignition key.
2. Using the HDS, program this key to the vehicle. Verify that the key works properly.
3. Check the operation of the keyless entry using the accessory user's information manual supplied.
4. Give the key to your customer.

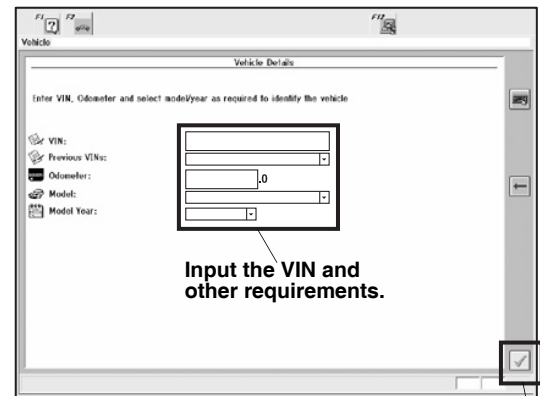
NEW KEY REGISTRATION

1. Acquire the PCM code from ISIS.

Click the car icon.



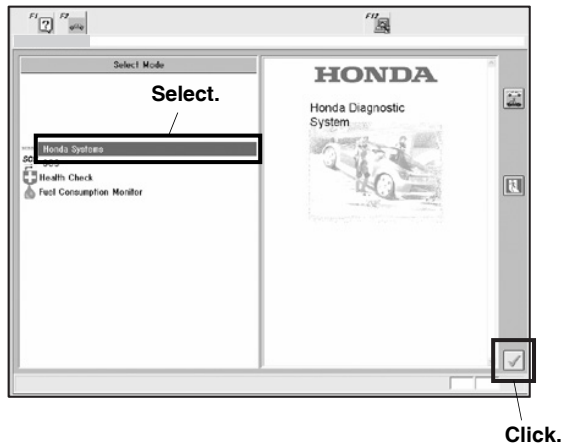
2. Connect the HDS tester to the OBD II data link connector, then turn the ignition switch to the ON (II) position.
3. Start the HDS, and click the car icon.
4. Input the VIN and other required information, then click the check button.



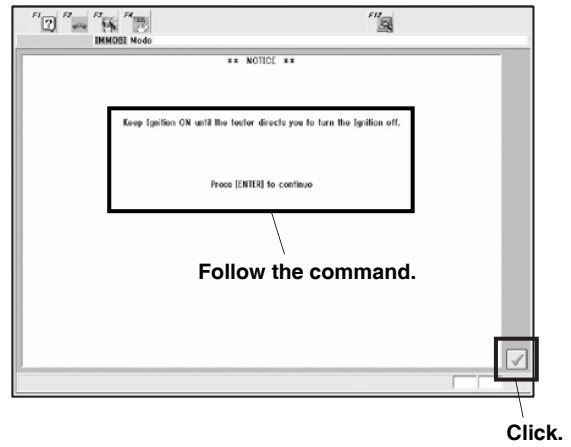
Input the VIN and other requirements.

Click.

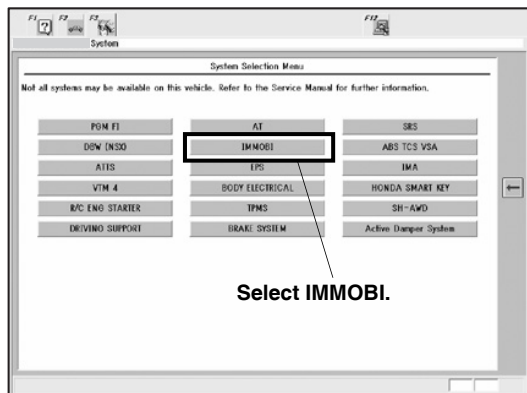
5. Select **Honda Systems**, then click the check button.



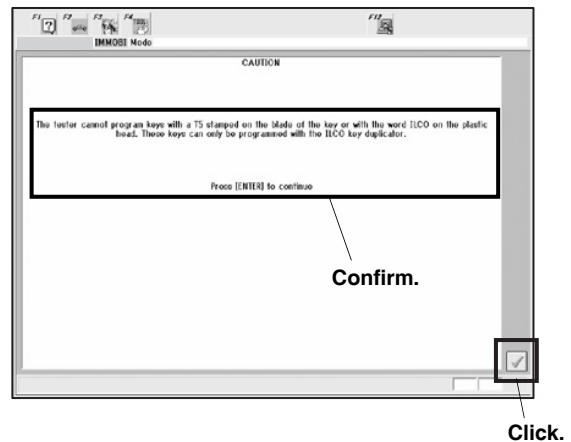
7. Follow the command, then click the check button.



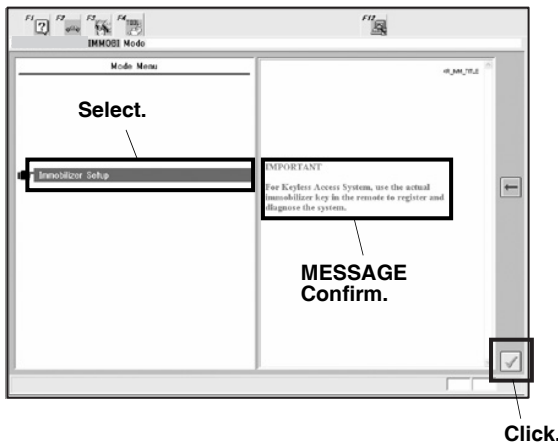
6. Select **IMMOBI**.



8. Confirm the description, then click the check button.

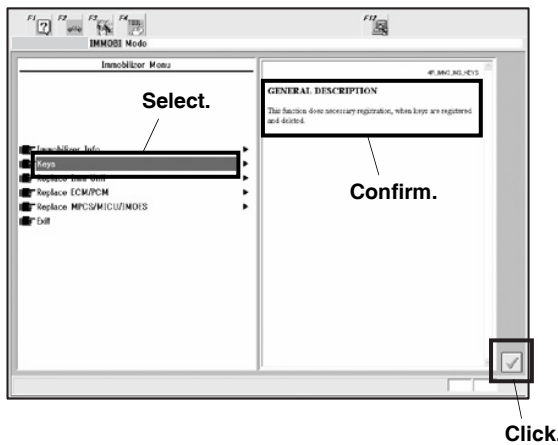


9. Select **Immobilizer Setup**, and confirm the message in red.



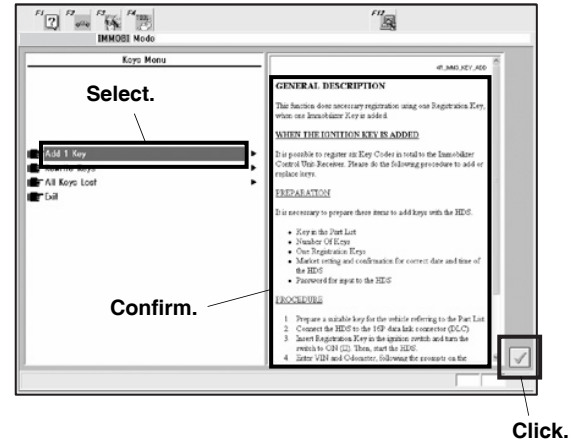
10. Click the check button.

11. Select **Keys**, and confirm the description.



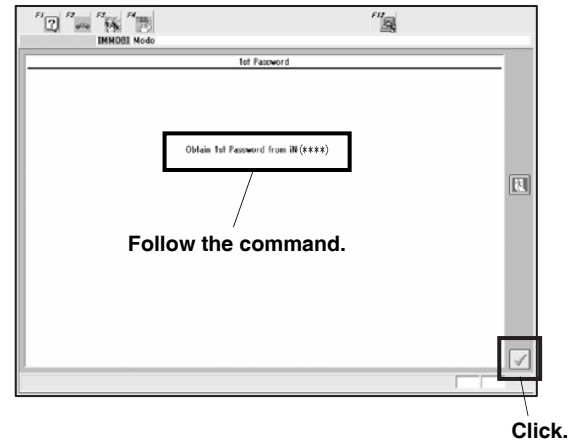
12. Click the check button.

13. Select **Add 1 Key**, and confirm the description.



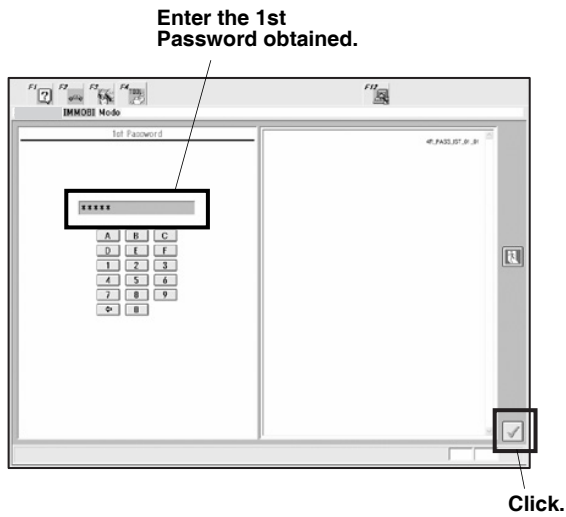
14. Click the check button.

15. Follow the command.



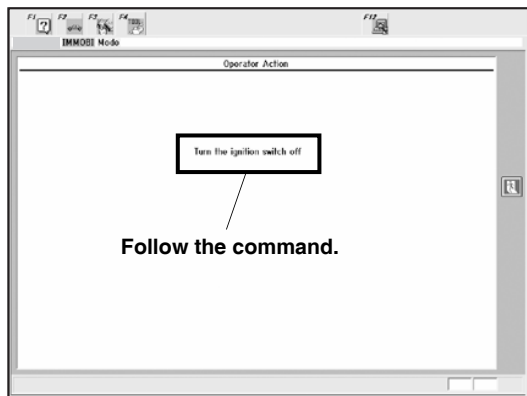
16. Click the check button.

17. Enter the 1st Password obtained.

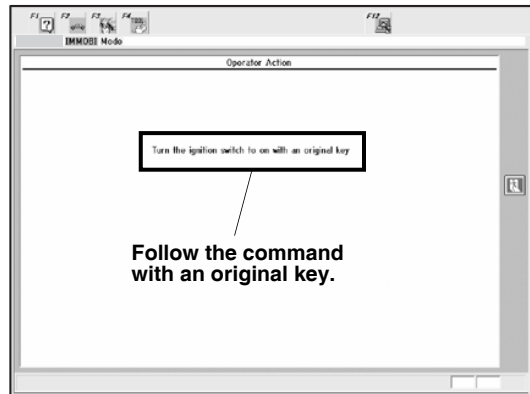


18. Click the check button.

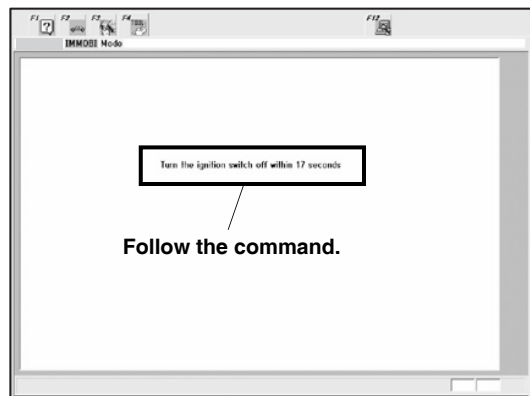
19. Follow the command.



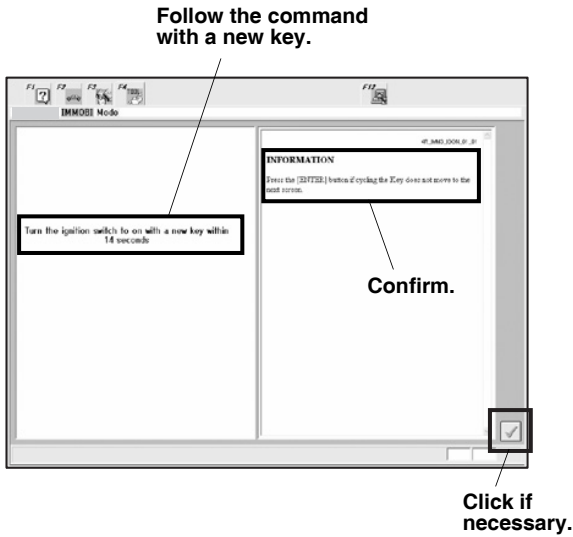
20. Follow the command with an original key.



21. Follow the command.

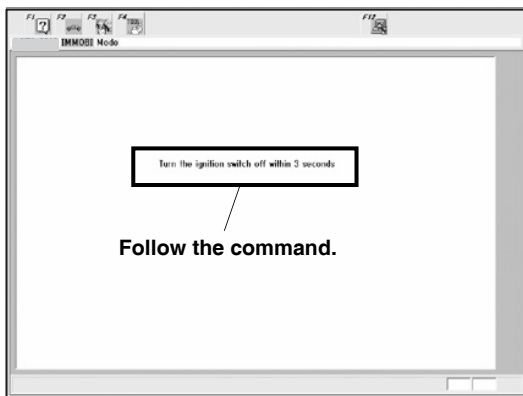


22. Follow the command with a new key.

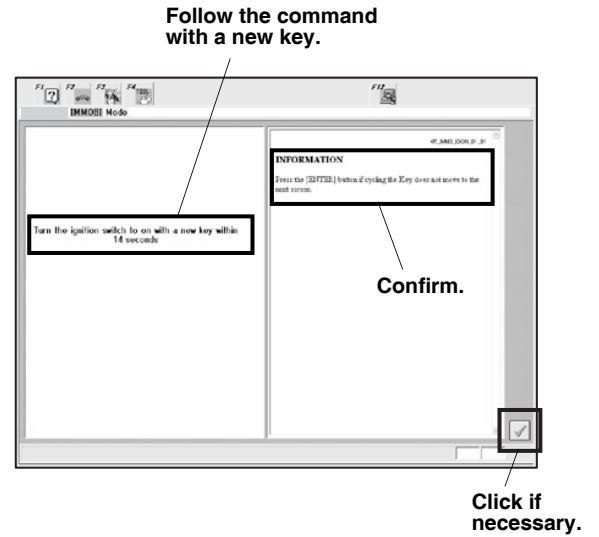


23. Confirm the description. (Click the check button if necessary.)

24. Follow the command.

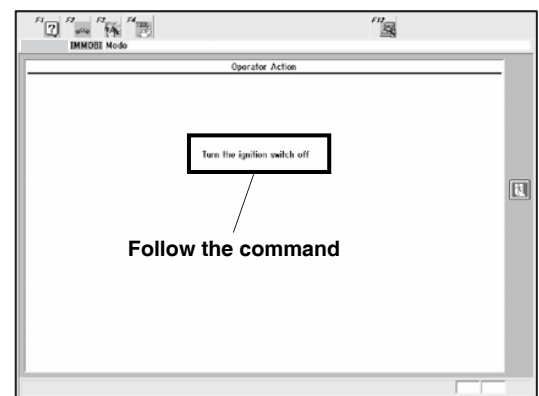


25. Follow the command with a new key.

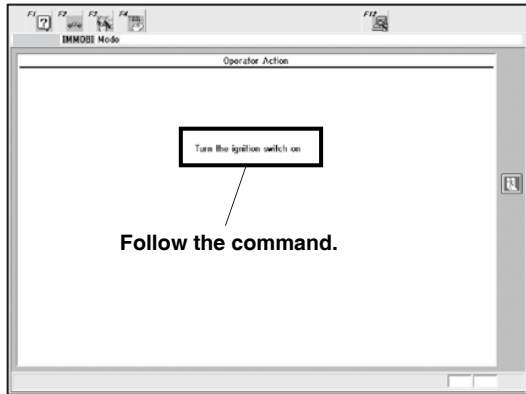


26. Confirm the command. (Click the check button if necessary.)

27. Follow the command.

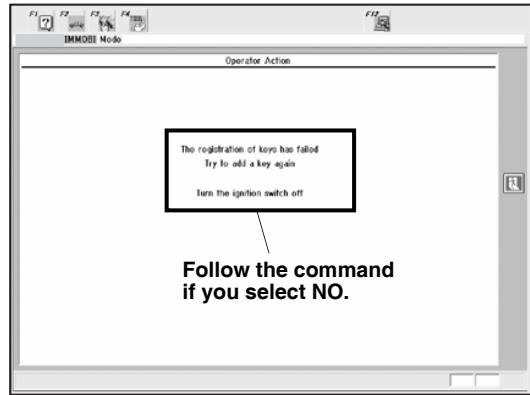


28. Follow the command.

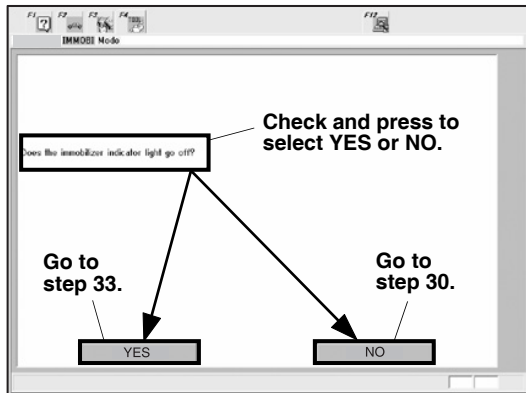


If you select NO:

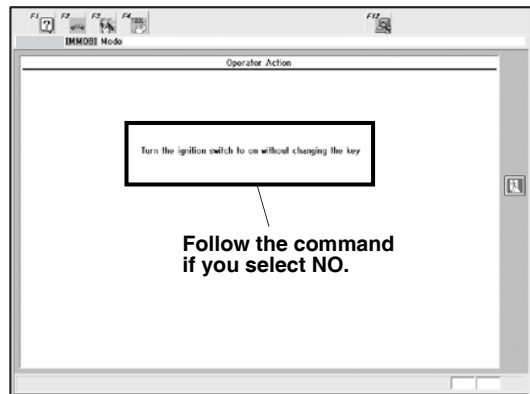
30. Follow the command.



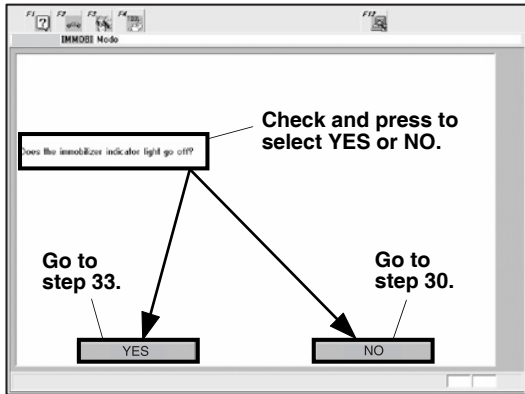
29. Check and press to select YES or NO.



31. Follow the command.

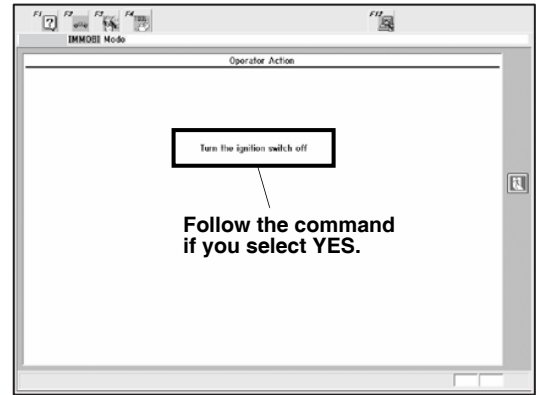


32. Check and press to select YES or NO.

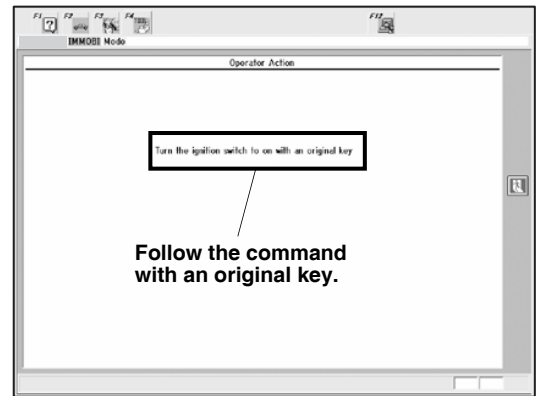


If you select YES:

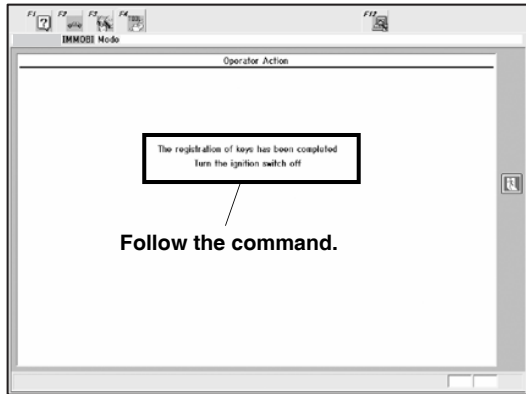
33. Follow the command.



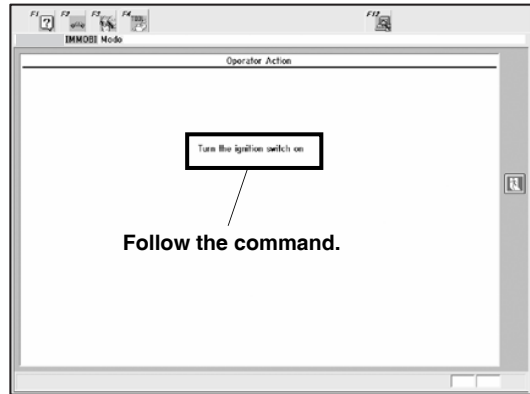
34. Follow the command with an original key.



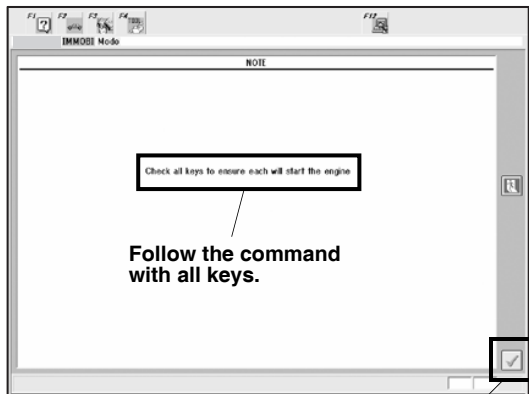
35. Follow the command.



38. Follow the command.



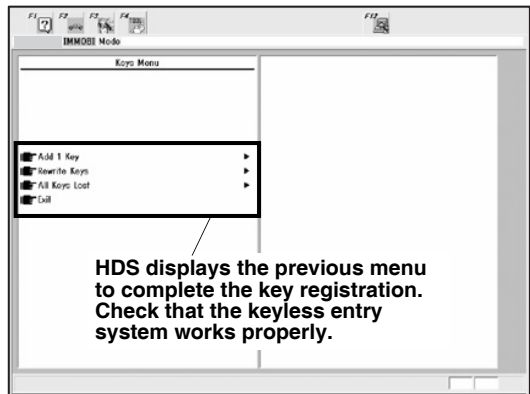
36. Follow the command with all keys.



Click if all keys start the engine.

37. Click the check button if all keys start the engine.

39. HDS displays the previous menu to complete the key registration.



40. Check that the keyless entry system works properly, then remove the HDS.