



## HONDA INSTALLATION INSTRUCTIONS

Accessory  
TRAILER HITCH

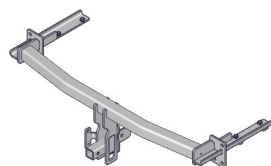
Application  
2022 CR-V

Publications No.  
**VERSION 1**  
Issue Date  
**AUG 2021**

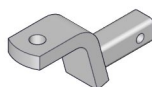
### PARTS LIST

Trailer Hitch Kit  
P/N 08L92-TLA-101

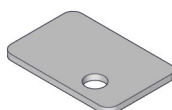
Trailer hitch



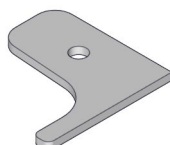
Ball mount



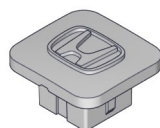
4 Plates



Center plate



Receiver cover



Hitch pin



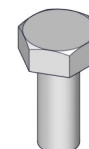
Hitch pin clip



12 x 50 mm Hex bolt



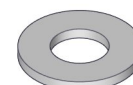
4 Hex bolts, 10 x 35 mm



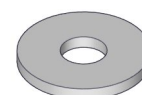
6 Hex bolts, 8 x 30 mm



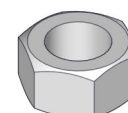
2 Plain washers, 12 mm



6 Plain washers, 8 mm



12 mm Hex nut



12 mm Spring washer



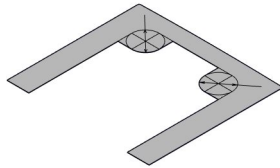
4 Spring washers, 10 mm



6 Spring washers, 8 mm



Template  
(Not used)

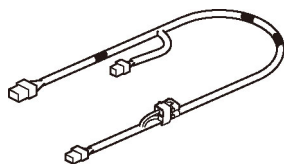


**Trailer Hitch Harness Kit  
P/N 08L91-TLA-100**

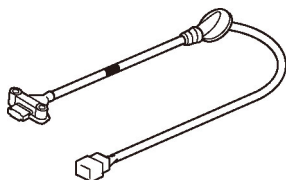
Control unit bracket



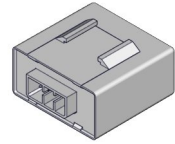
Trailer hitch harness



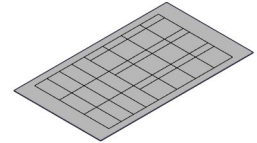
Socket harness



Control unit



Fuse label



Wire tie with clip A



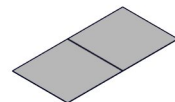
3 Wire ties with clip B



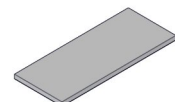
2 Wire ties



3 Aluminium tapes



Urethane tape



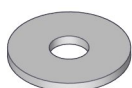
2 Flange bolts, 6 x 40 mm



3 Flange nuts, 6 mm



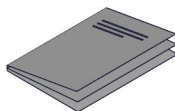
6 mm Plain washer



Clip



Accessory User's Information Manual



**Hands-Free Access Power Tailgate Unit Kit  
(With standard Hands-Free Access Power Tailgate)  
P/N 08U59-TLA-1B0A**

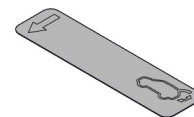
Hands-free access unit



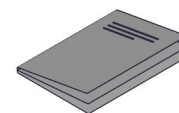
Bumper clip



Label



Accessory User's Information Manual



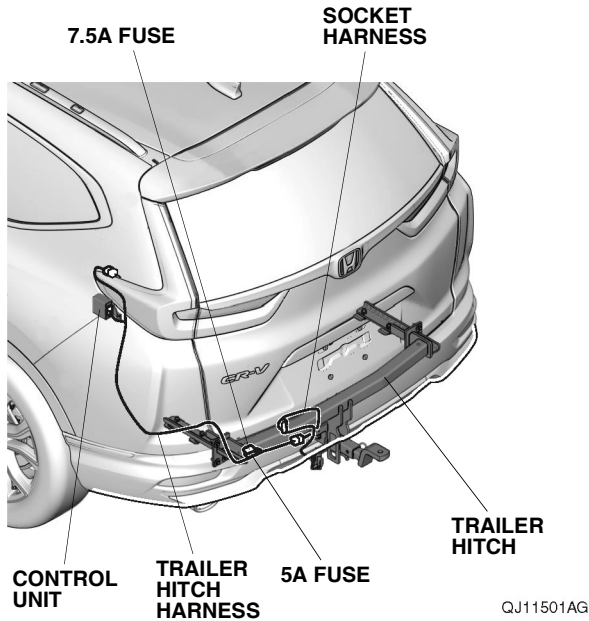
## TOOLS AND SUPPLIES REQUIRED

Stubby Phillips screwdriver  
Phillips screwdriver  
Small flat-tip screwdriver  
10 mm Open end wrench  
10 mm, 12 mm, 14 mm, 17 mm, and 19 mm Sockets  
Pushpin  
Ratchet  
3 mm Drill bit  
Eye protection (face shield, safety goggles, etc.)  
File  
Ruler  
Blanket  
Isopropyl alcohol  
Shop towel  
14 mm and 20 mm Hole saws  
Drill  
Masking tape  
5 mm Hex wrench  
Touch-up paint  
Torque wrench  
Diagonal cutters  
18 mm Step drill

*The following tools are available through the Honda Tool and Equipment Program. On the iN, click on Service > Service Bay > Tool and Equipment Program, then enter the number under "Search." Or, call 888-424-6857.*

- Trim Tool Set (T/N SOJATP2014)
- Plastic Trim Tool (T/N SILTRIMTL10)
- Air Saw (T/N AT192A)
- Rotabroach Hole Cutting Kit (T/N BLR11201SO)

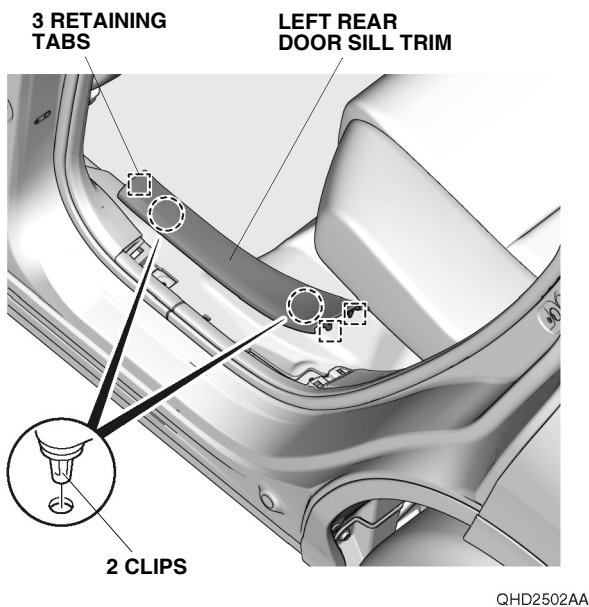
## Illustration of the Trailer Hitch on the Vehicle



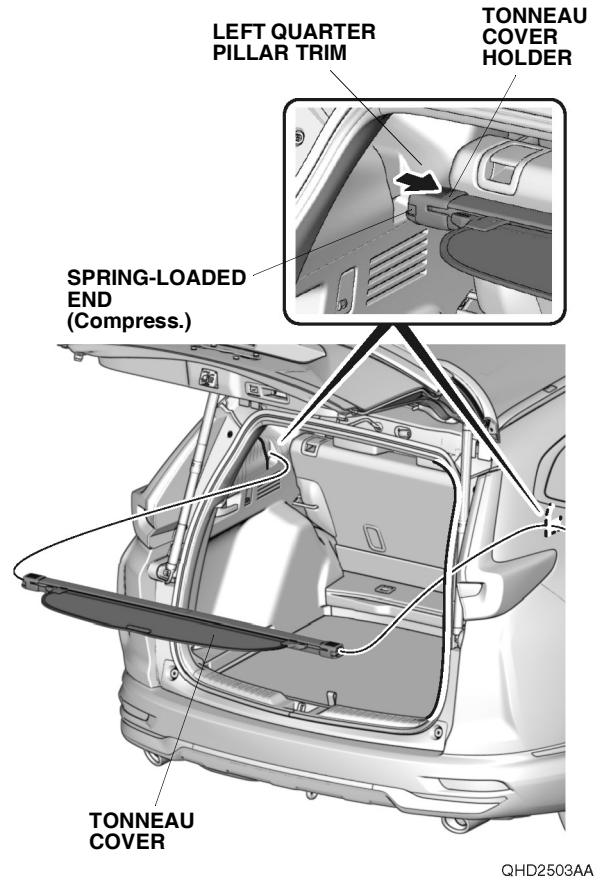
## INSTALLATION

**Customer Information:** The information in this installation instruction is intended for use only by skilled technicians who have the proper tools, equipment, and training to correctly and safely add equipment to your vehicle. These procedures should not be attempted by "do-it-yourselfers."

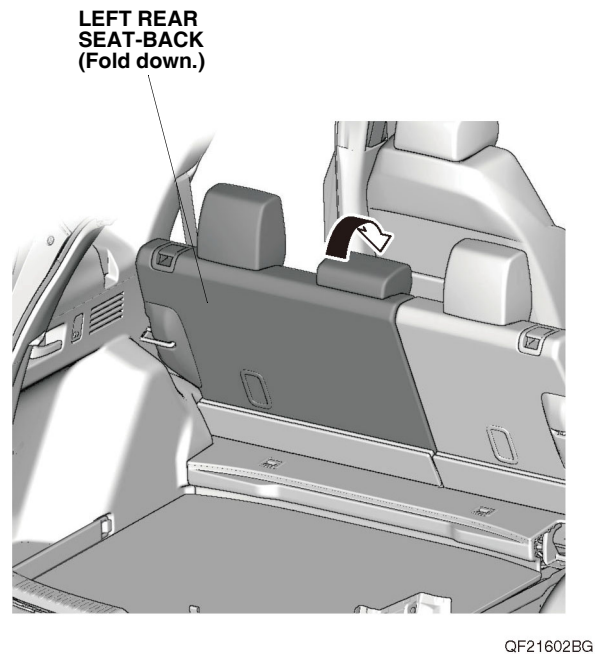
1. Disconnect the negative cable from the battery.
2. Remove the left rear door sill trim.



3. If equipped, remove the tonneau cover.

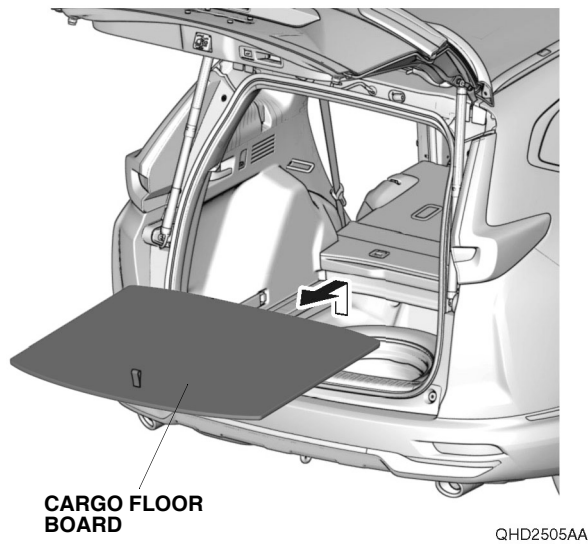


4. Fold down the left rear seat-back.

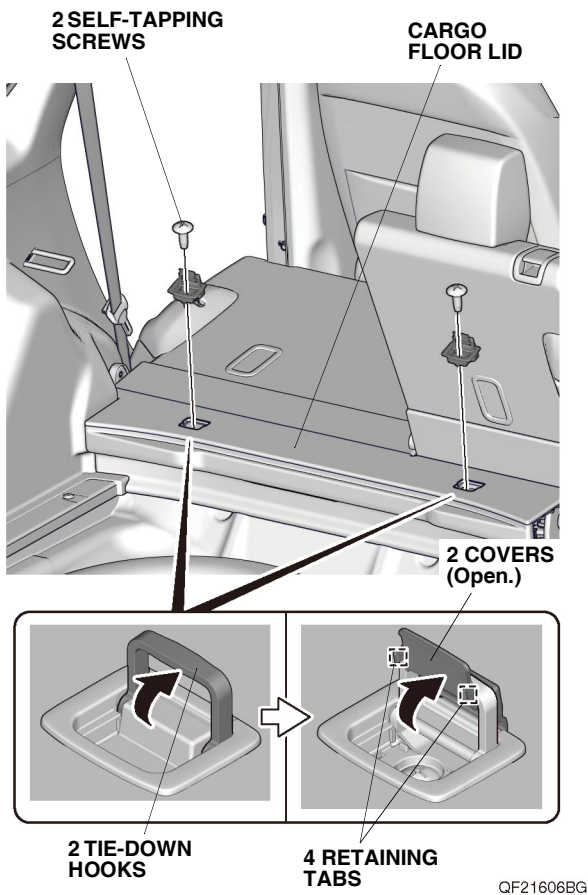




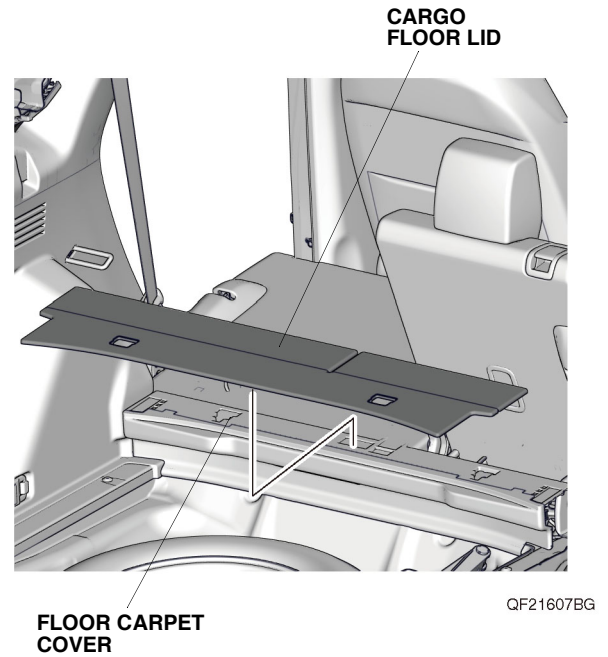
5. Remove the cargo floor board.



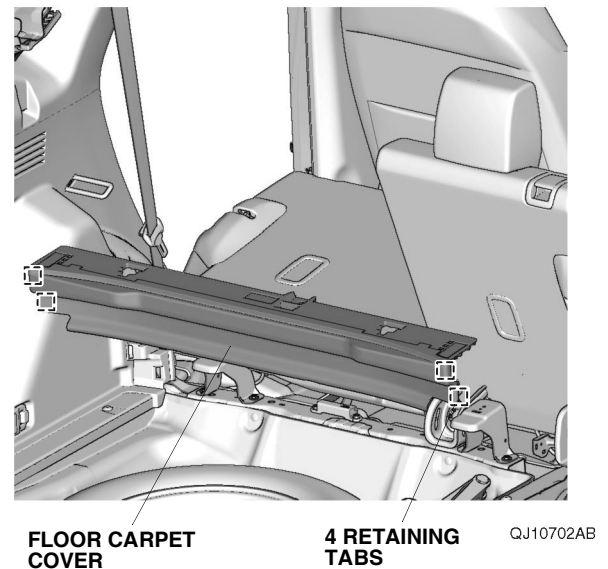
6. Remove the two tie-down hooks.



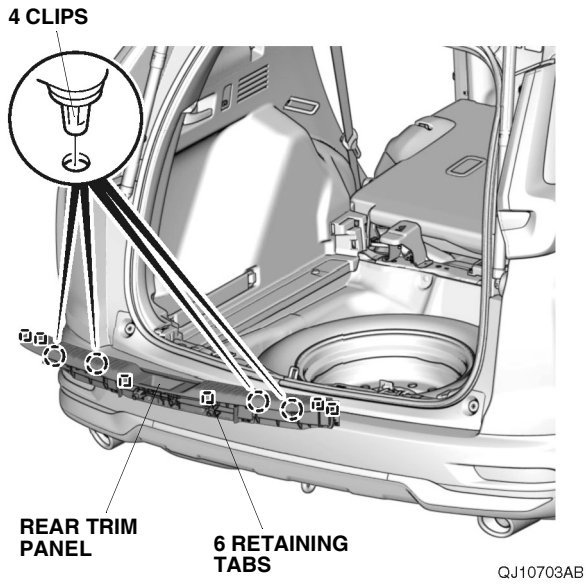
7. Remove the cargo floor lid.



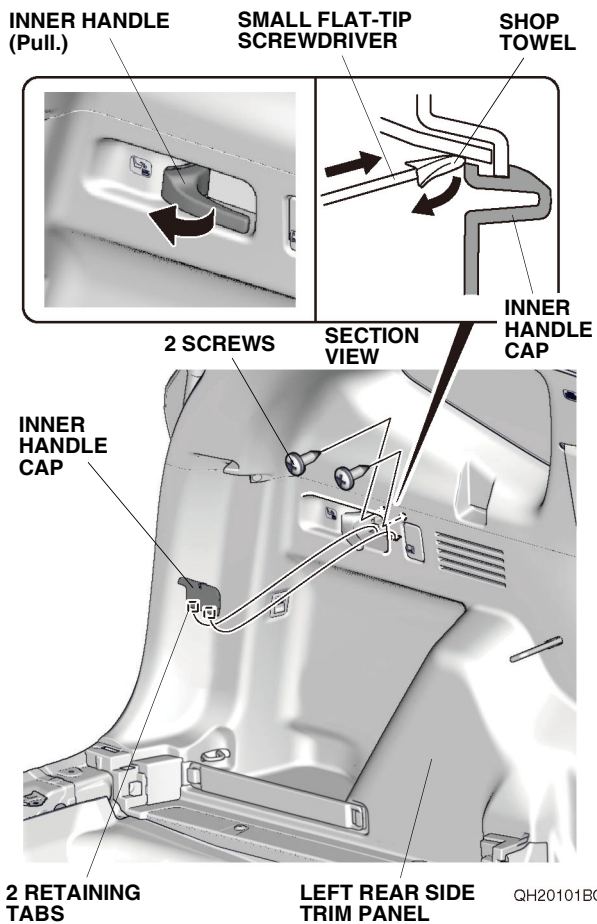
8. Remove the floor carpet cover.



9. Remove the rear trim panel.

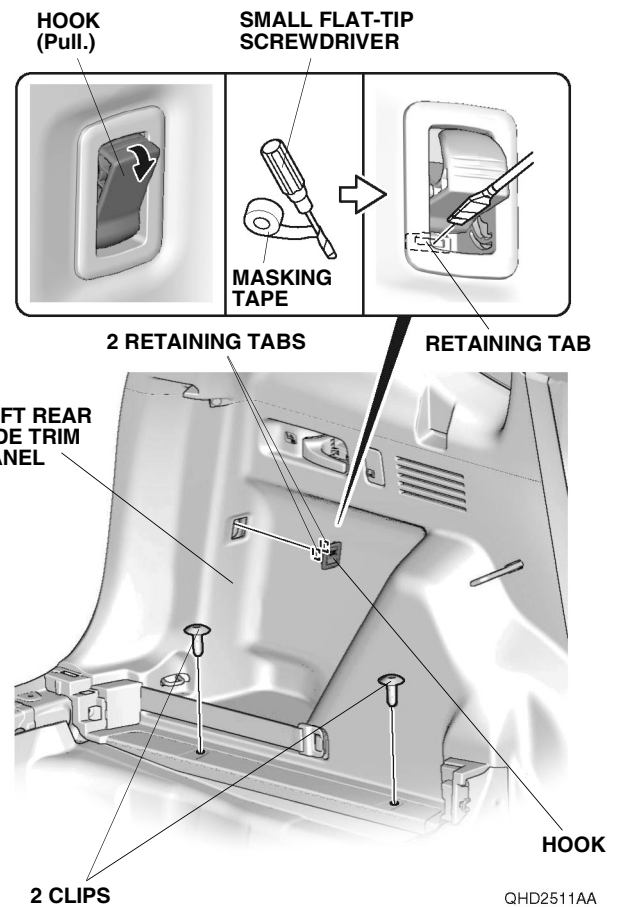


10. Gently pull the inner handle on the left rear side trim panel, and use a small flat-tip screwdriver wrapped with a shop towel to remove the inner handle cap.

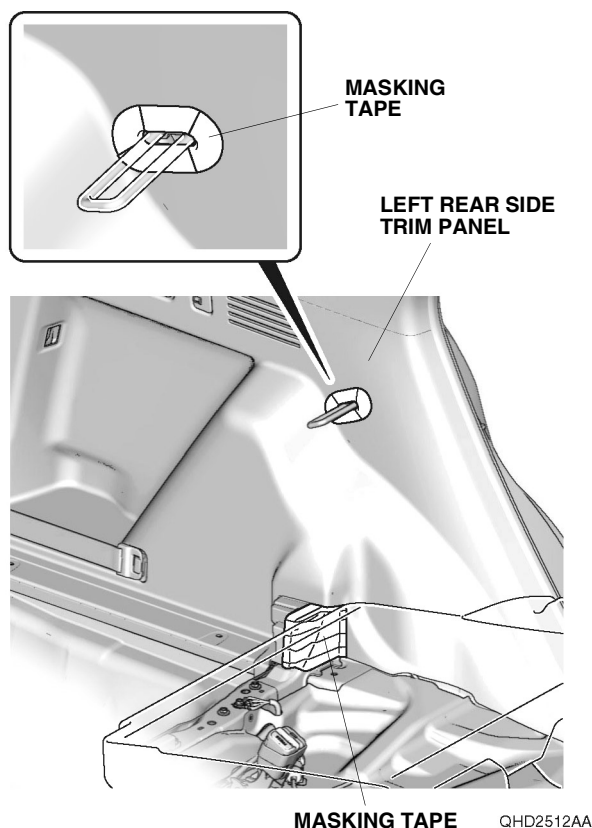


11. Remove the two screws from the left rear side trim panel.

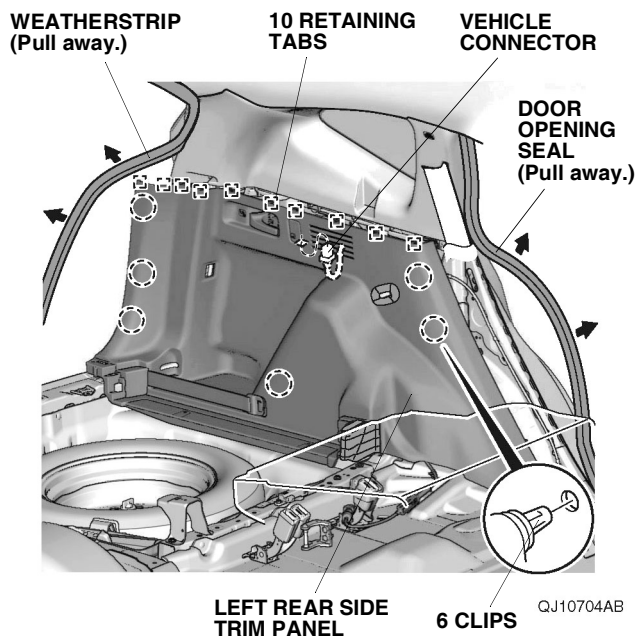
12. Gently pull the hook on the left rear side trim panel, and use a small flat-tip screwdriver wrapped with masking tape to remove the hook as shown. Then, remove the two clips from the left rear side trim panel.



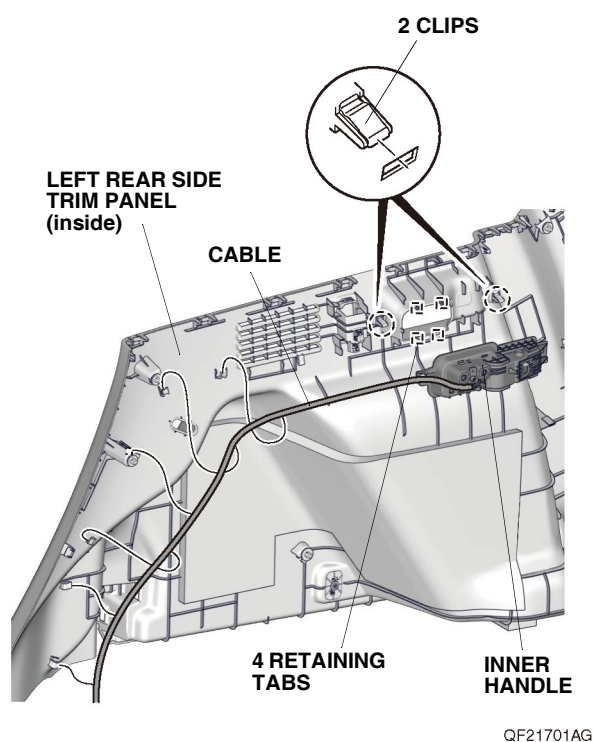
13. Apply masking tape to the left rear side trim panel as shown.



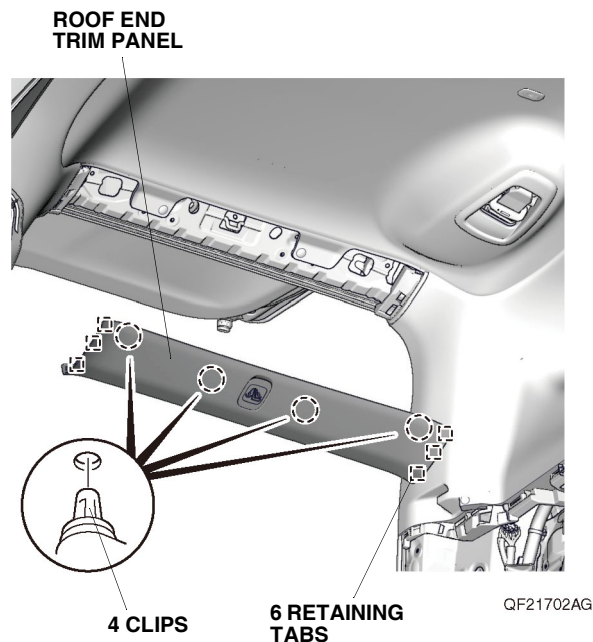
14. Pull away the door opening seal and weatherstrip from around the left rear side trim panel. Remove the left rear side trim panel, and unplug the vehicle connector.



15. Release the cable from the left rear side trim panel, then remove the inner handle.

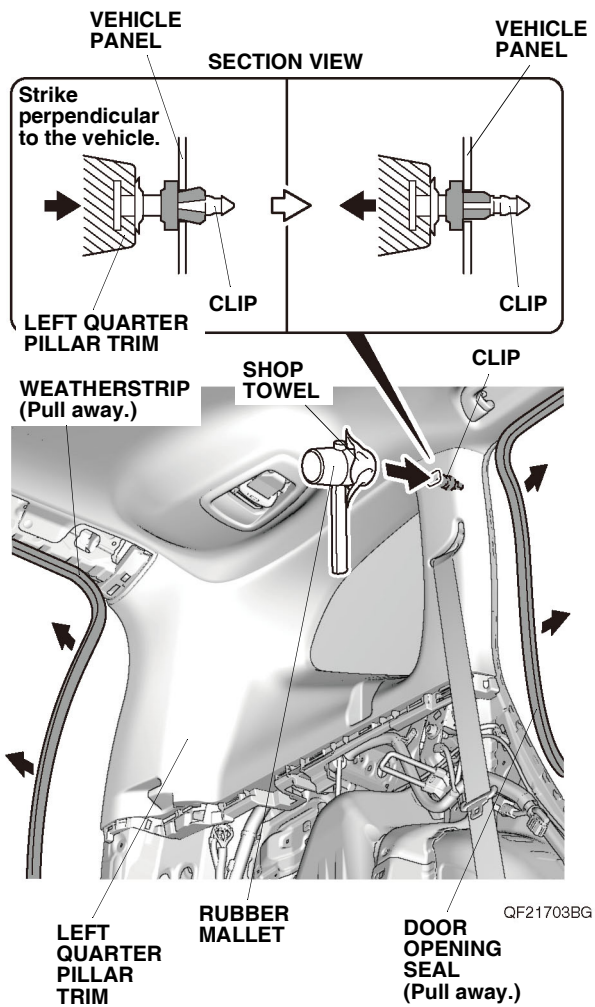


16. Remove the roof end trim panel.

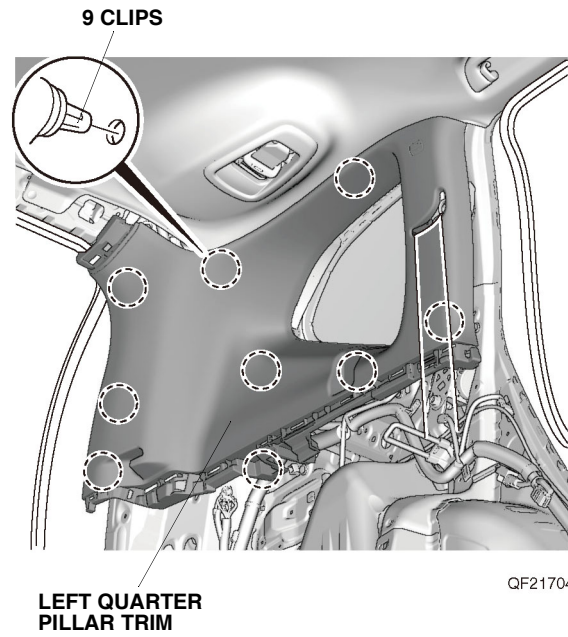




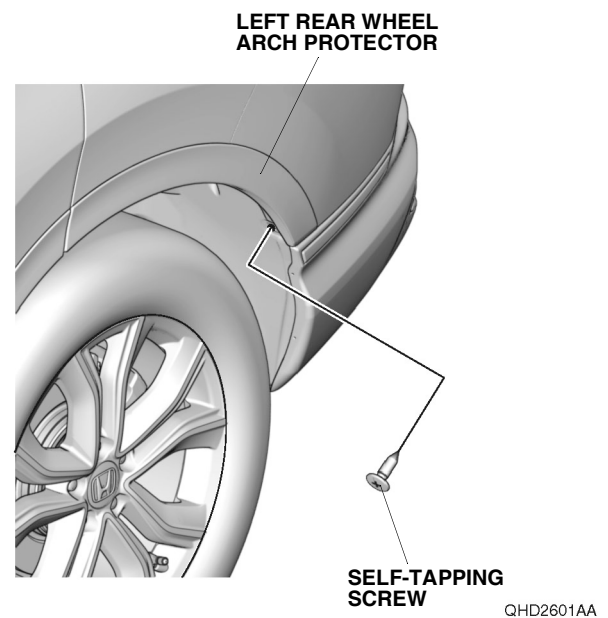
17. Pull away the door opening seal and weatherstrip from around the left quarter pillar trim.



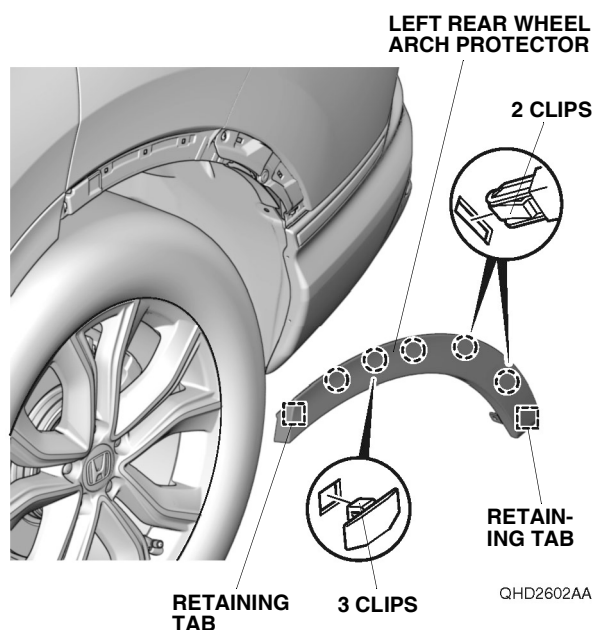
18. Using a rubber mallet wrapped with a shop towel, lightly tap the area marked **SIDE CURTAIN AIRBAG** on the left quarter pillar trim to push in the clip. Make sure to strike the area perpendicular to the vehicle.
19. Remove the left quarter pillar trim.



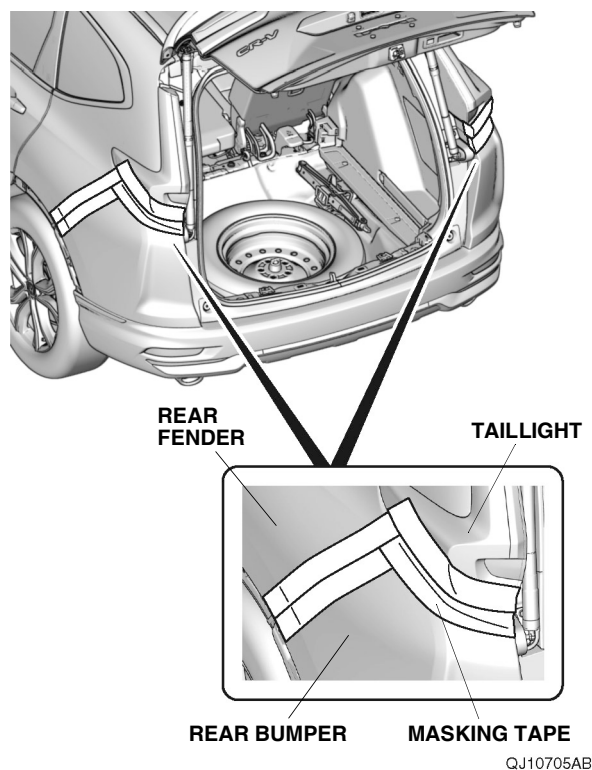
20. Remove the self-tapping screw from the left rear wheel arch protector.



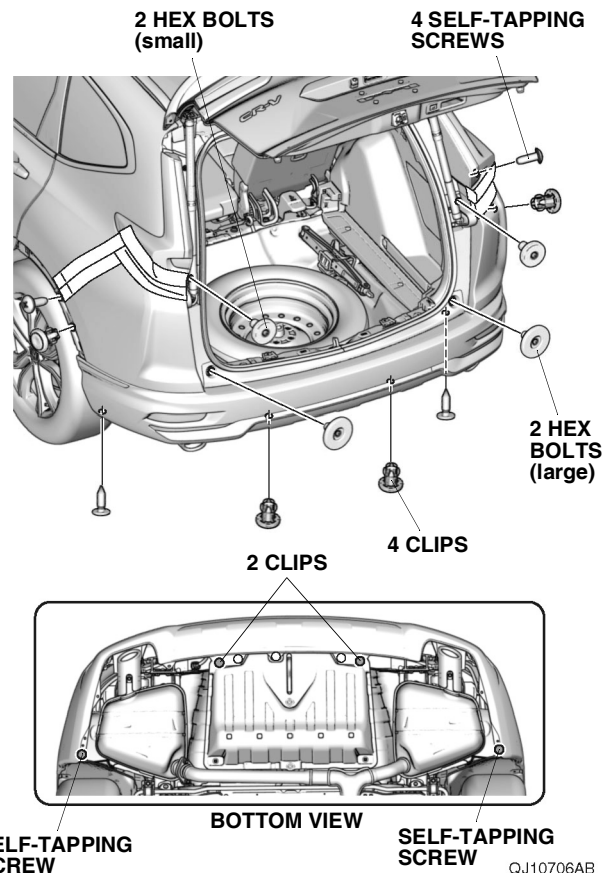
21. Remove the left rear wheel arch protector.



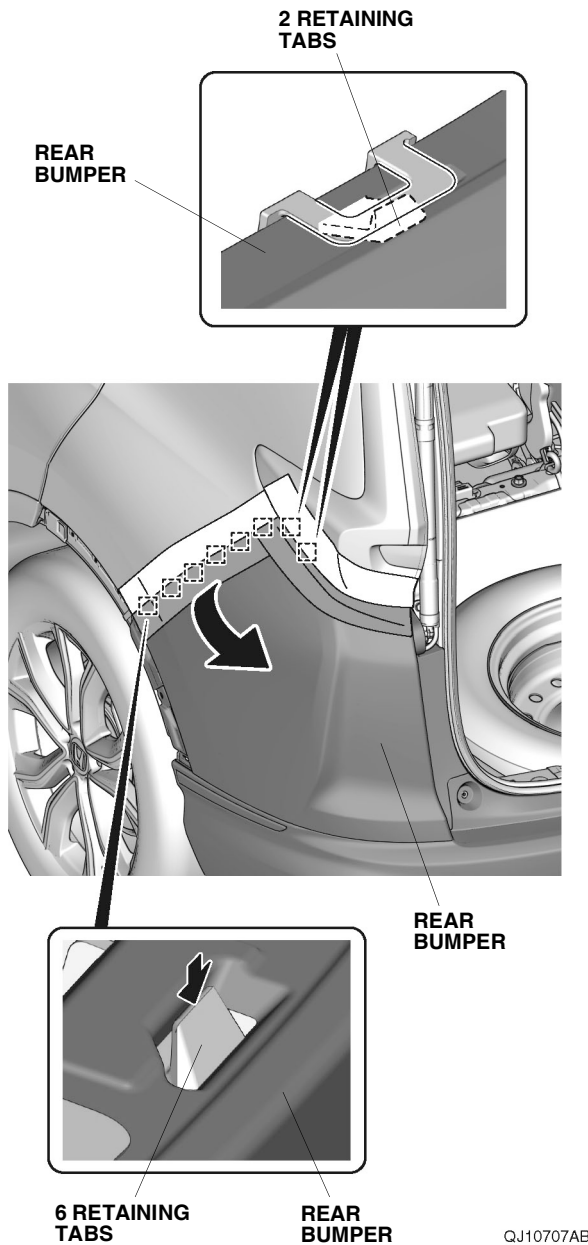
22. Repeat steps 20 and 21 on the right side of the vehicle.
23. Remove the rear bumper:
  - Apply masking tape on each side as shown.



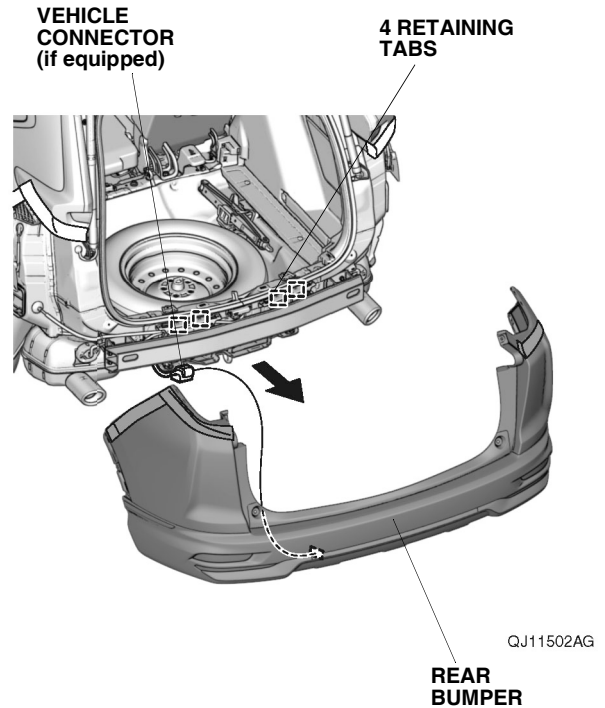
- Remove the four self-tapping screws, four clips, two hex bolts (large), and two hex bolts (small) as shown.



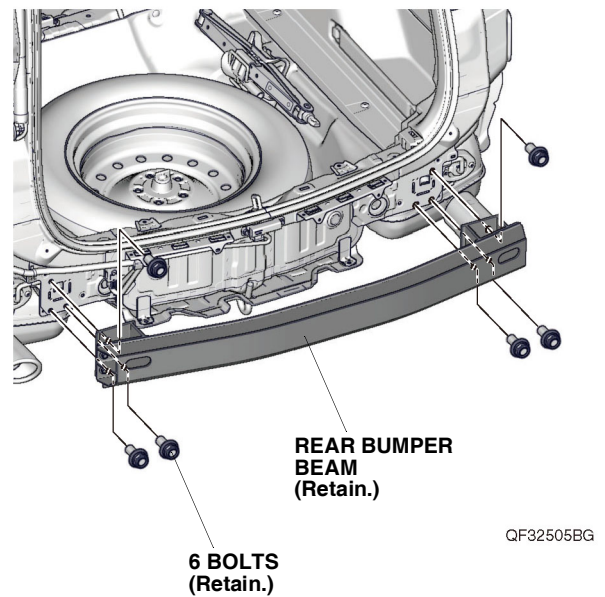
- With the help of an assistant, release the eight retaining tabs on each side.



- With the help of an assistant, remove the rear bumper, and unplug the vehicle connector (if equipped).
- Place the rear bumper on a blanket.

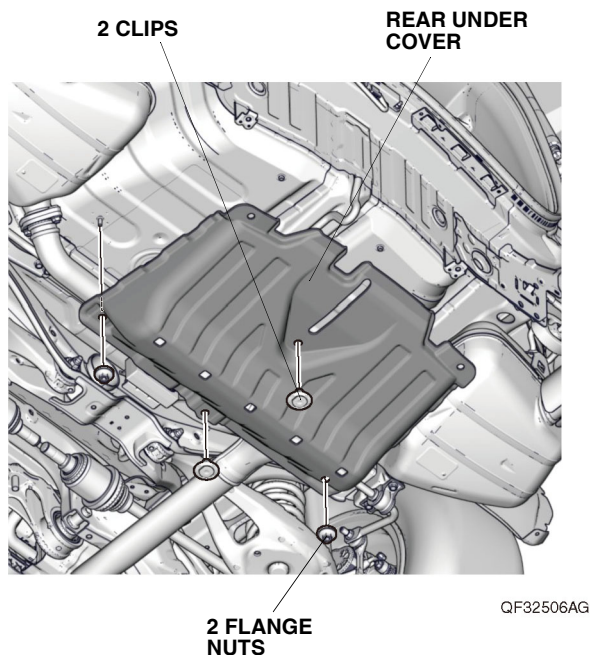


## 24. Remove the rear bumper beam.

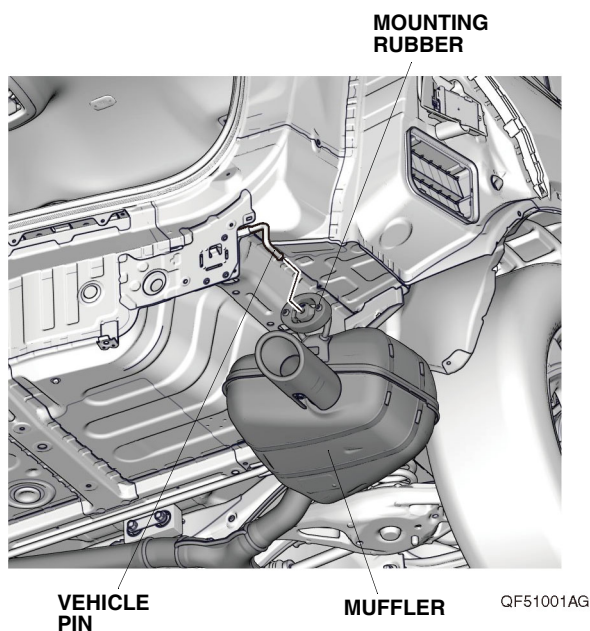




25. Remove the rear under cover.



26. Remove the mounting rubber from the vehicle pin.  
NOTE: Be careful not to damage the muffler.



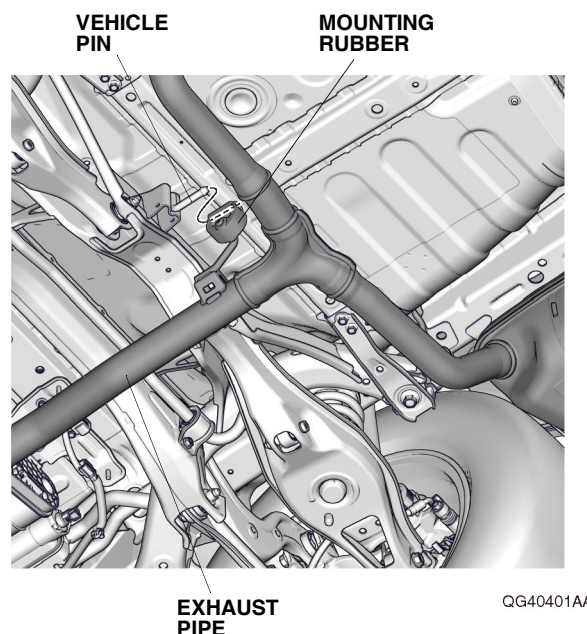
27. Remove the mounting rubber from the left side of the vehicle the same way, if equipped.

If the vehicle is 2WD models, continue with step 28; if the vehicle is 4WD models, go to step 29.

## 2WD models

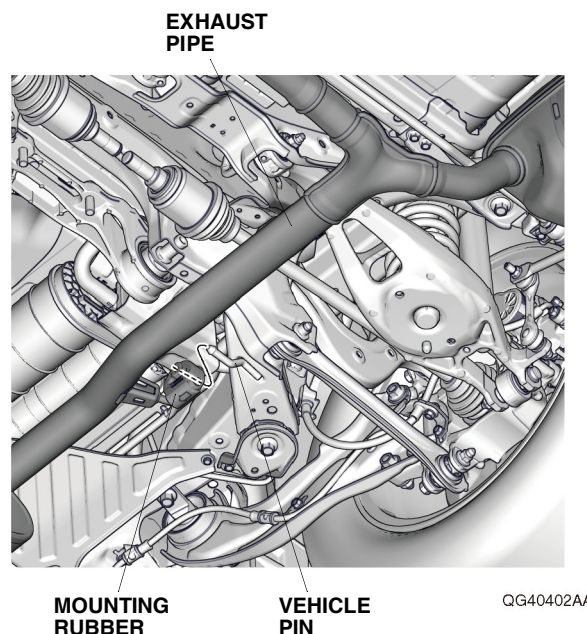
28. Remove the mounting rubber from the vehicle pin.  
Go to step 30.

NOTE: Be careful not to damage the exhaust pipe.



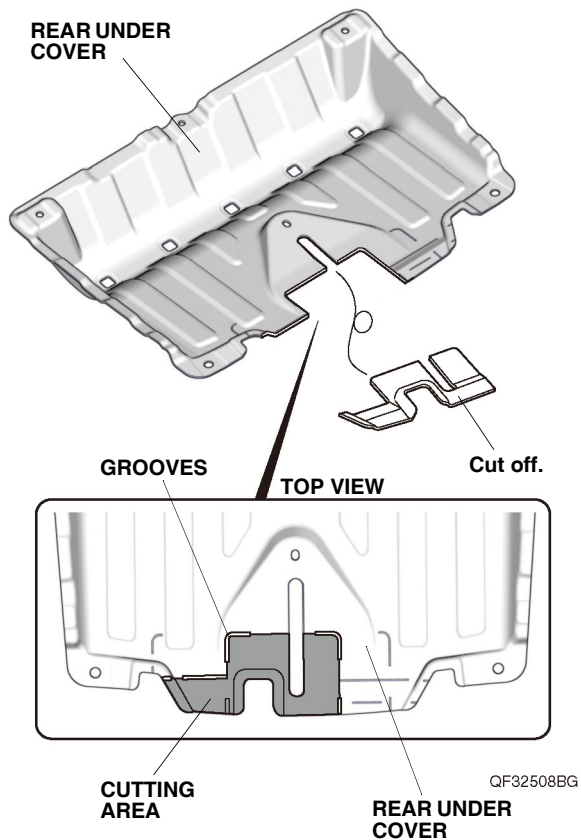
## 4WD models

29. Remove the mounting rubber from the vehicle pin.  
NOTE: Be careful not to damage the exhaust pipe.





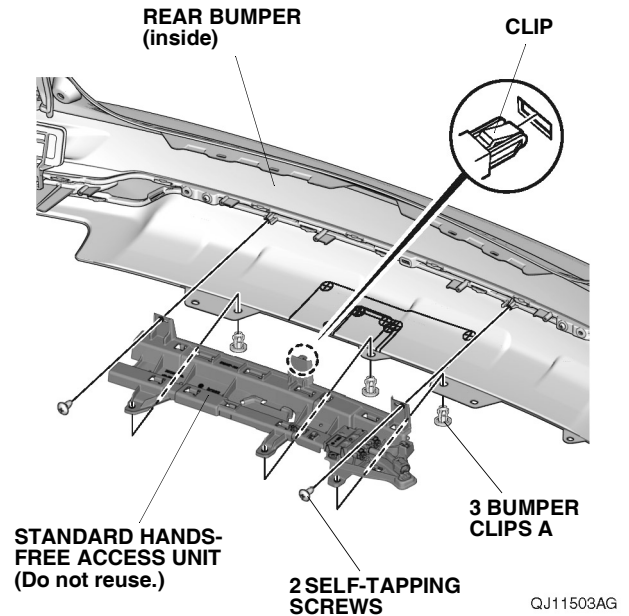
30. Using a utility knife, cut off the rear under cover as shown. Remove any burrs and sharp edges from the corners.



If the vehicle is equipped with the standard Hands-Free Access Power Tailgate, continue with step 31; otherwise, go to step 32.

## With standard Hands-Free Access Power Tailgate

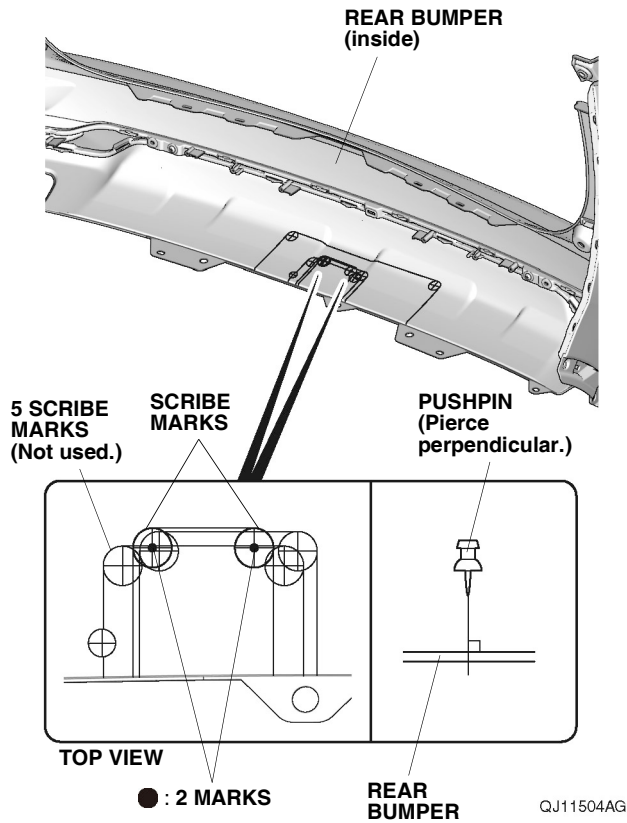
31. Remove the standard hands-free access unit from the rear bumper.



32. Using a pushpin, pierce the scribe marks on the rear bumper as shown.

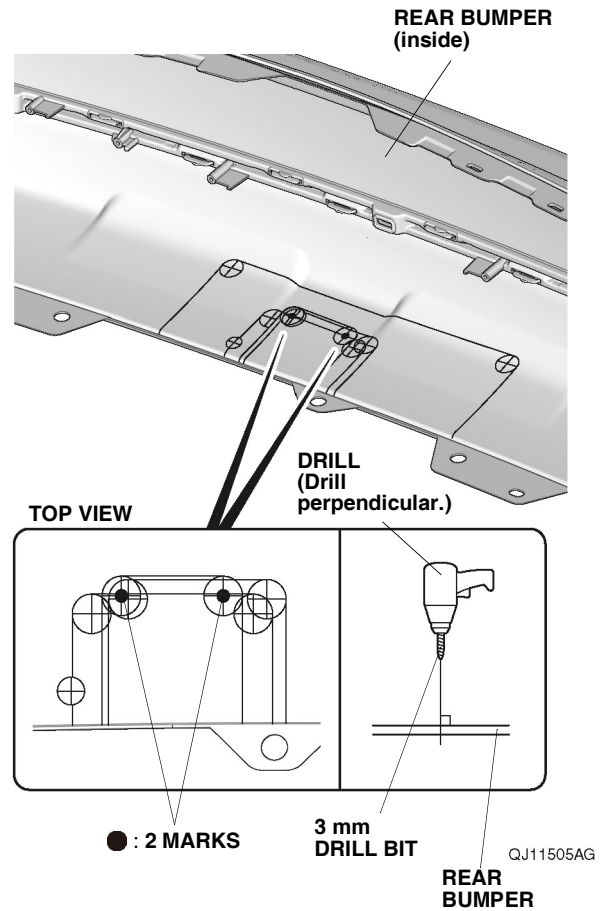
NOTE: Make sure to pierce the scribe mark perpendicular to the rear bumper.

- Make sure to pierce the scribe mark perpendicular to the rear bumper.
- Make sure to locate the correct scribe mark.

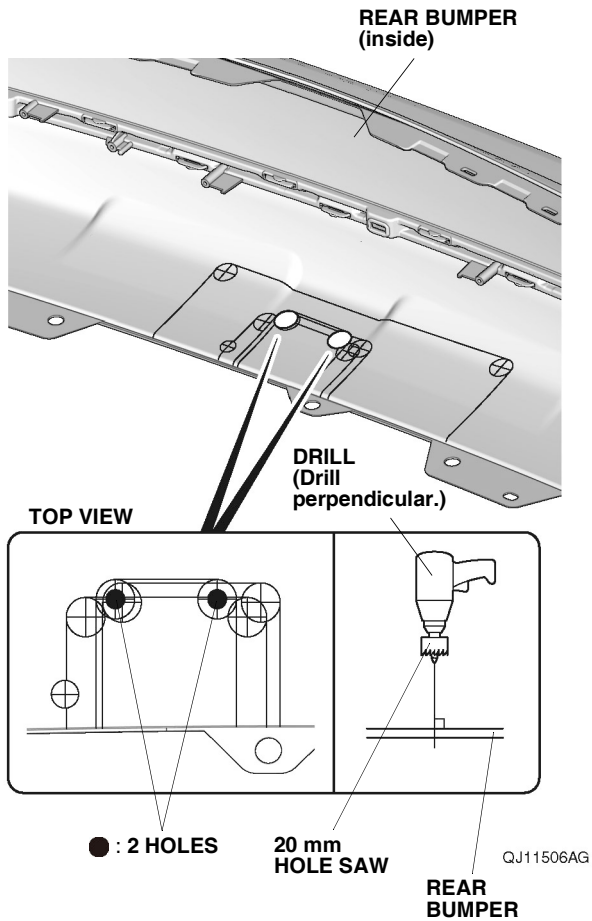


33. While wearing eye protection, drill the two pierced marks on the rear bumper with a 3 mm drill bit.

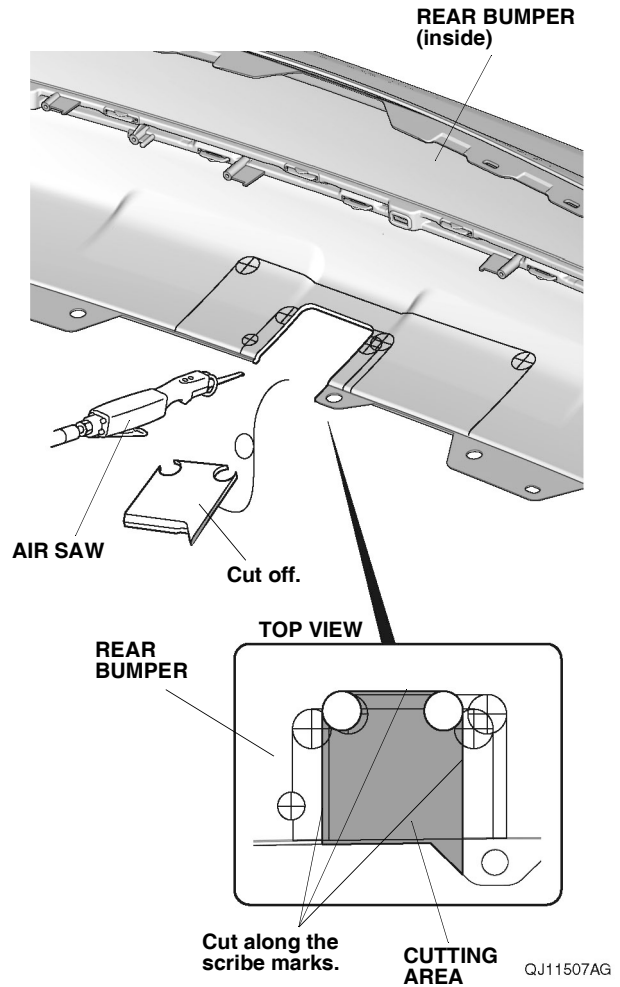
NOTE: Make sure to drill perpendicular to the rear bumper.



34. While wearing eye protection, enlarge the 3 mm holes to 20 mm using a 20 mm hole saw.  
NOTE: Make sure to drill perpendicular to the rear bumper.



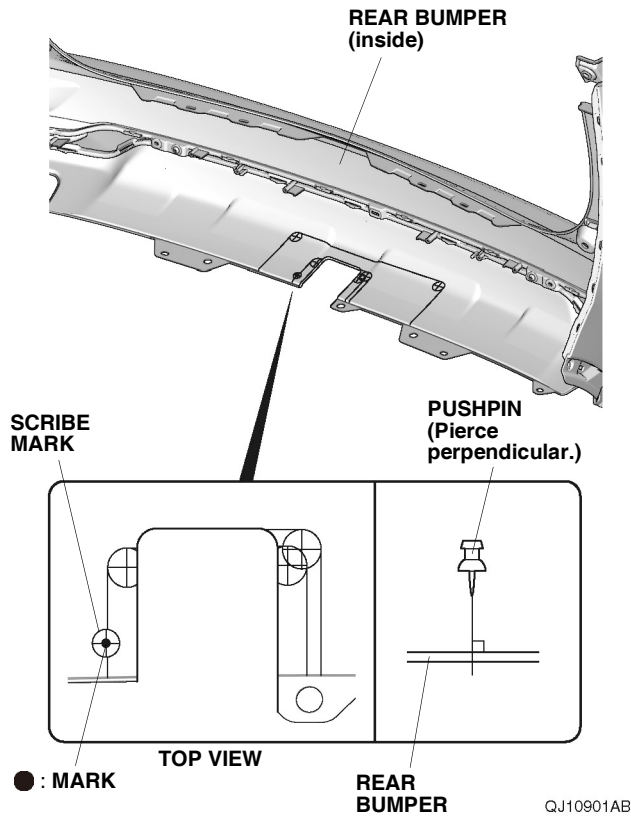
35. While wearing eye protection, use an air saw to cut off the rear bumper along the scribe marks on the rear bumper as shown. Remove any burrs and sharp edges from the corner.



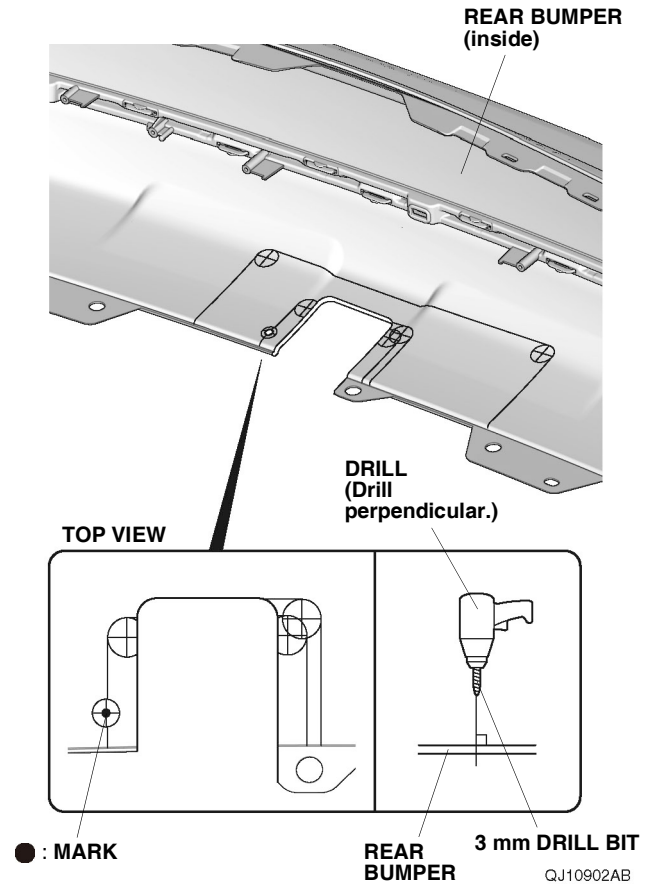
If the vehicle is equipped with the standard Hands-Free Access Power Tailgate, continue with step 36; otherwise, go to step 41.

## With standard Hands-Free Access Power Tailgate

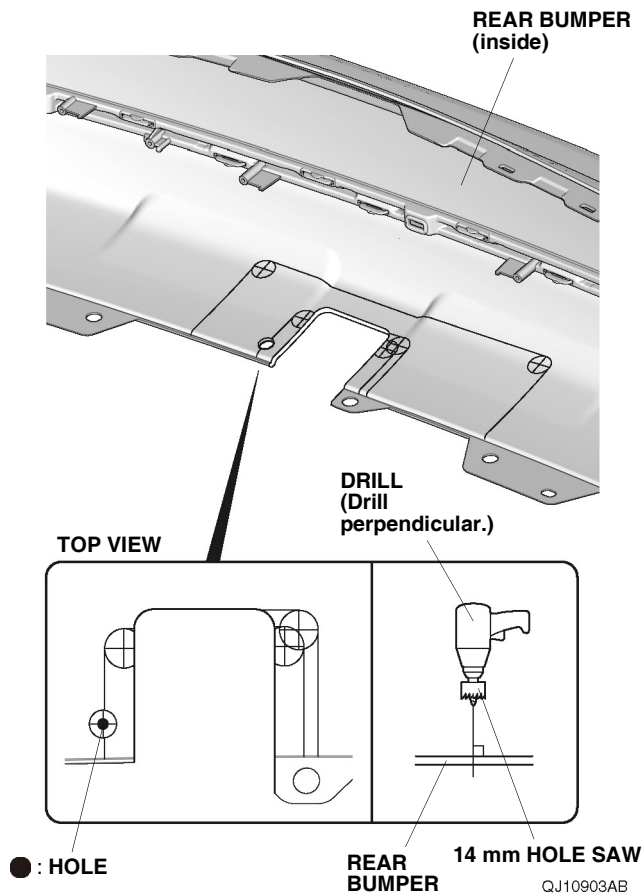
36. Using a pushpin, pierce the scribe mark on the rear bumper.
- Make sure to pierce the scribe mark perpendicular to the rear bumper.
  - Make sure to locate the correct scribe mark.



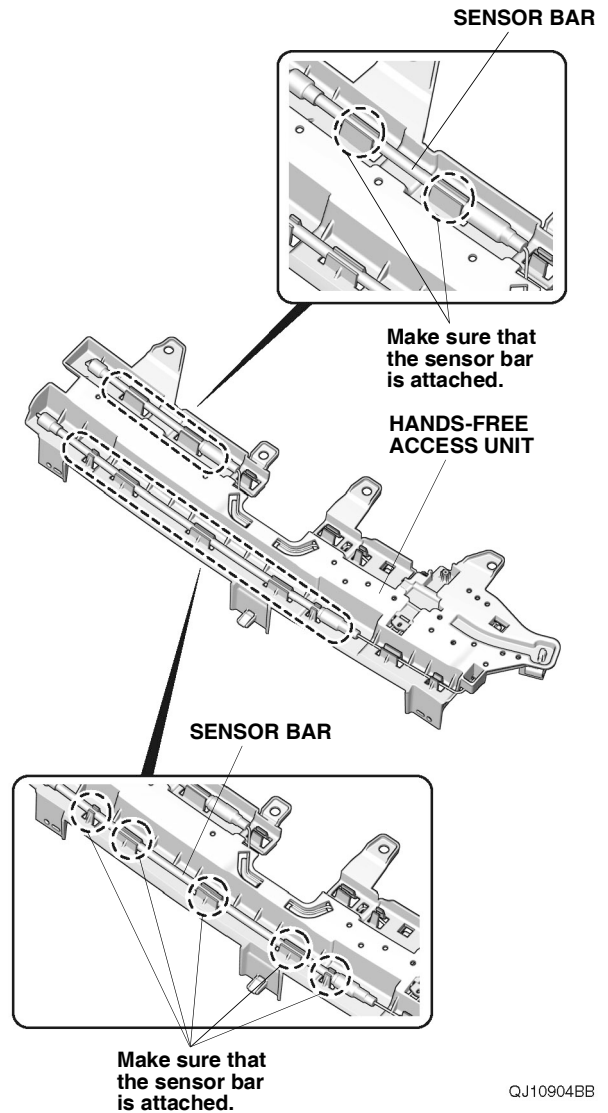
37. While wearing eye protection, drill the pierced mark on the rear bumper with a 3 mm drill bit.
- NOTE: Make sure to drill perpendicular to the rear bumper.



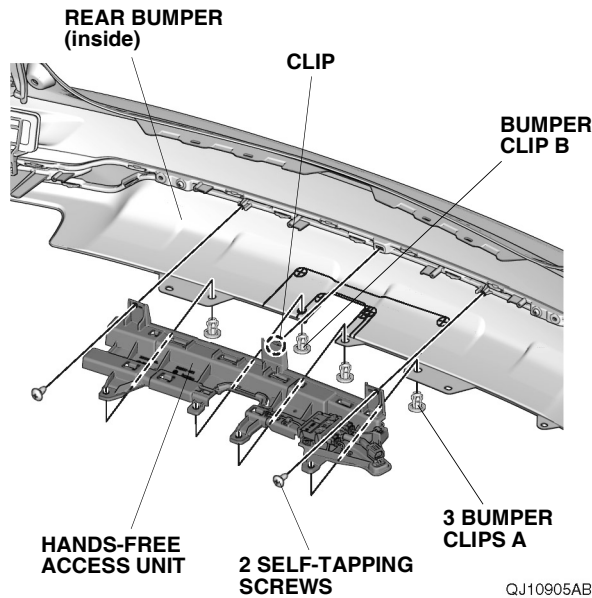
38. While wearing eye protection, enlarge the 3 mm hole to 14 mm using a 14 mm hole saw. Remove any burrs.  
NOTE: Make sure to drill perpendicular to the rear bumper.



39. Check the installation condition of the sensor bars in the hands-free access unit.

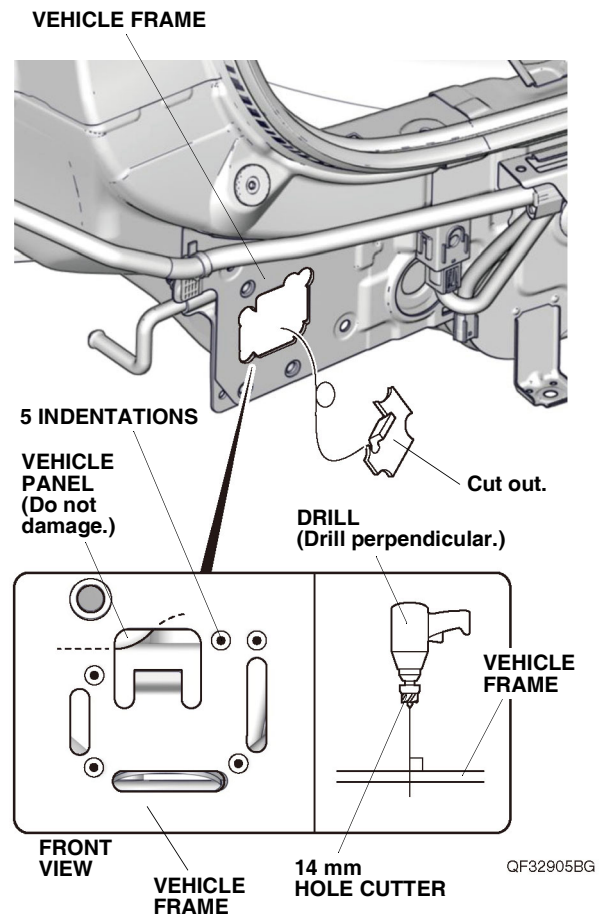


40. Install the hands-free access unit to the rear bumper with two self-tapping screws, three clips A removed in step 31, one bumper clip B, and one clip.



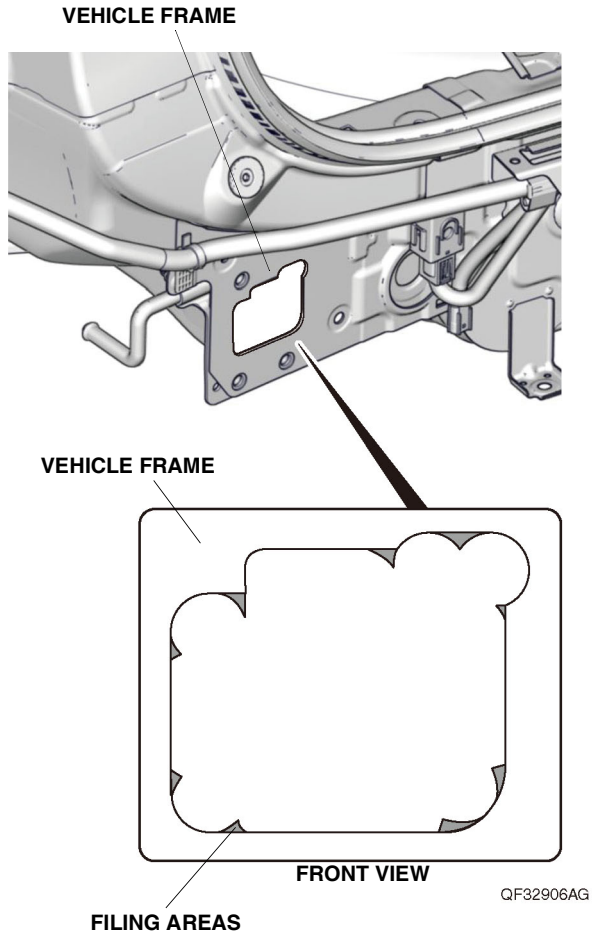
41. While wearing eye protection, drill the center of the five indentations on the vehicle frame with a 14 mm hole cutter.

NOTE: Make sure to drill perpendicular to the vehicle frame.



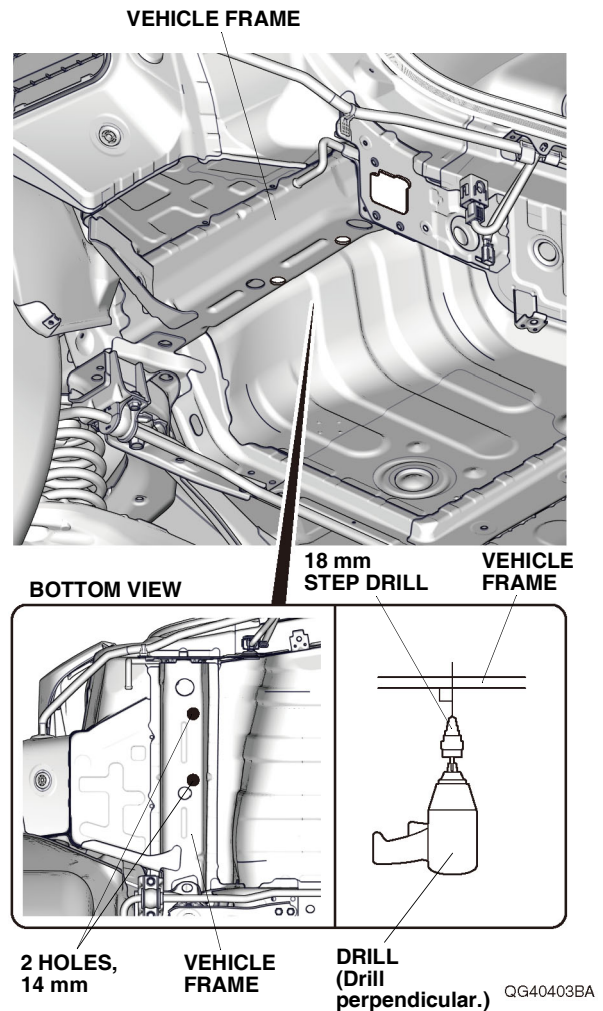


42. Using a file, file the vehicle frame as shown.



43. Apply touch-up paint to the edge of the hole. Allow the touch-up paint to dry thoroughly.

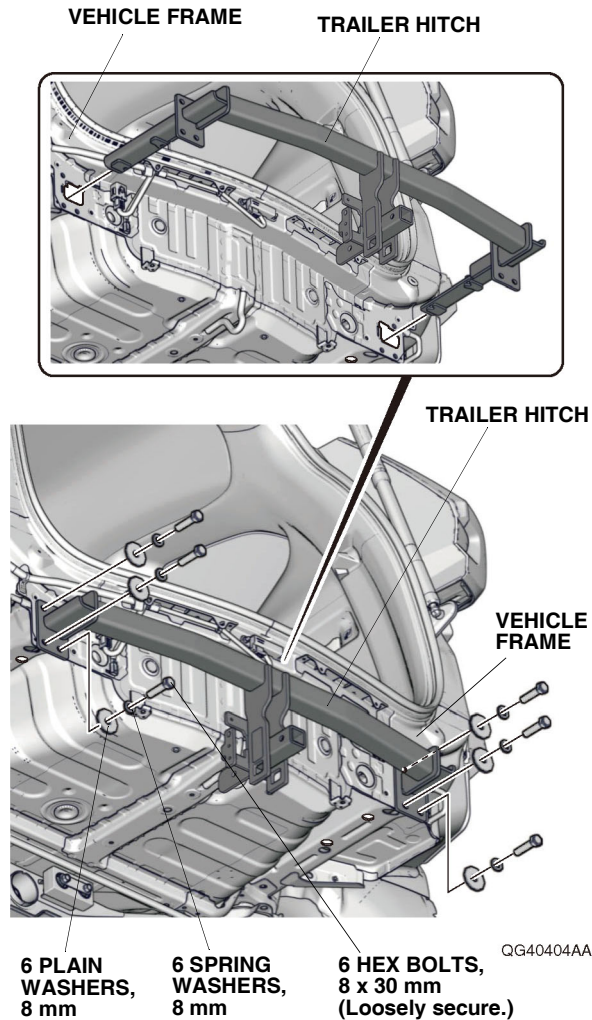
44. While wearing eye protection, enlarge the two 14 mm holes on the vehicle frame to 18 mm using an 18 mm step drill. Remove any burrs.  
NOTE: Make sure to drill perpendicular to the vehicle frame.



45. Apply touch-up paint to the edges of the two holes. Allow the touch-up paint to dry thoroughly.
46. Repeat steps 41 through 45 on the right side of the vehicle.



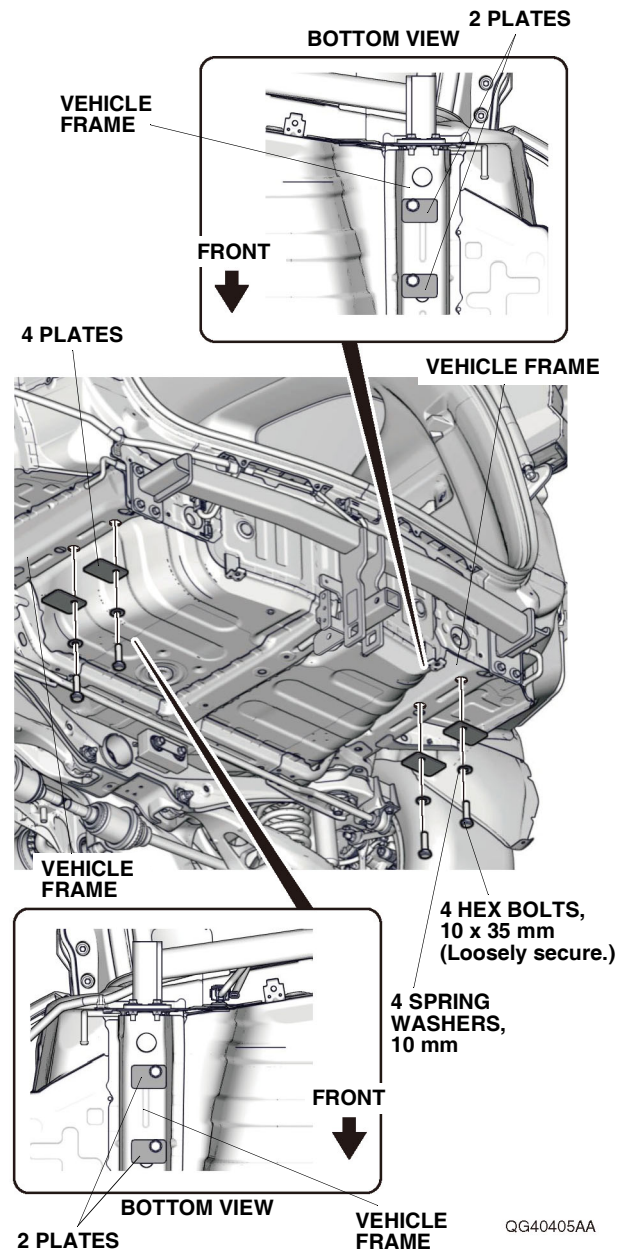
47. Install the trailer hitch to the vehicle frame.



48. Loosely secure the trailer hitch to the vehicle frame with six 8 mm plain washers, six 8 mm spring washers, and six 8 x 30 mm hex bolts.

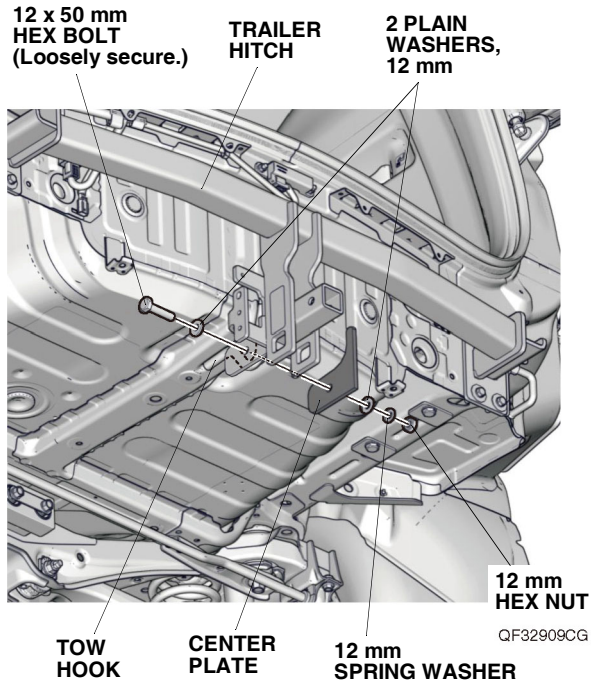
49. Loosely secure the trailer hitch to the vehicle frame with four plates, four 10 mm spring washers, and four 10 x 35 mm hex bolts.

NOTE: Make sure to install the plates in the correct orientations.

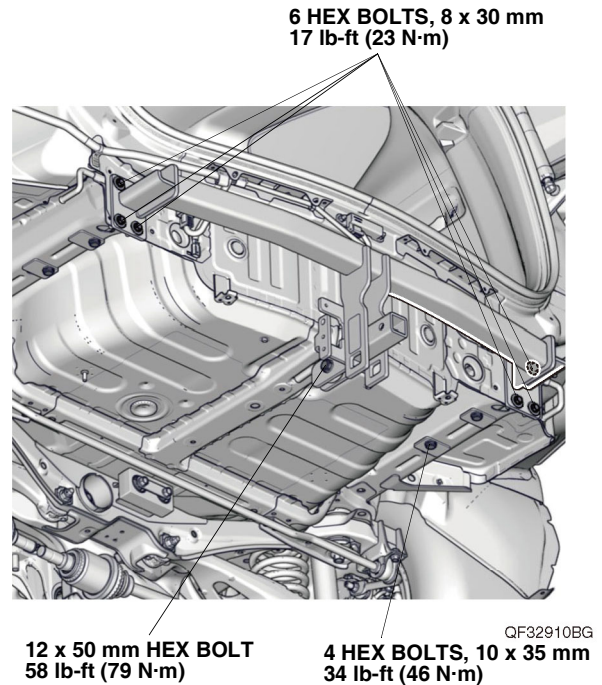


50. Loosely secure the center plate to the trailer hitch with two 12 mm plain washers, one 12 mm spring washer, one 12 mm hex nut, and one 12 x 50 mm hex bolt through the tow hook.

NOTE: Make sure to install the center plate in the correct orientation.

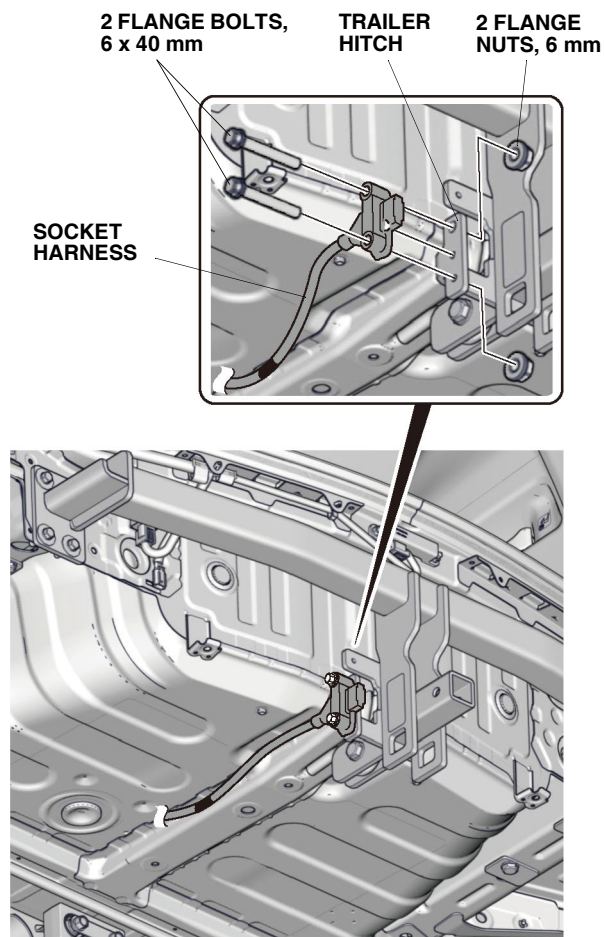


51. Tighten the six 8 x 30 mm hex bolts loosely secured in step 48. Torque the six 8 x 30 mm hex bolts to 17 lb-ft (23 N·m).



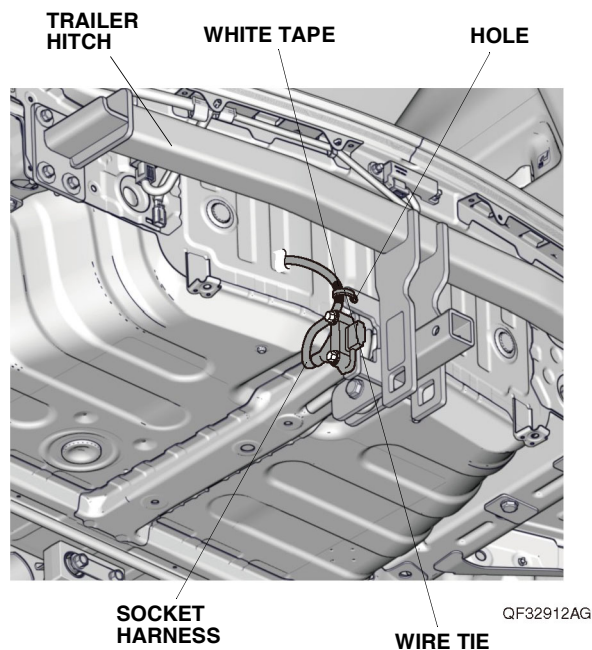
52. Tighten the four 10 x 35 mm hex bolts loosely secured in step 49. Torque the four 10 x 35 mm hex bolts to 34 lb-ft (46 N·m).
53. Tighten one 12 x 50 mm hex bolt loosely secured in step 50. Torque one 12 x 50 mm hex bolt to 58 lb-ft (79 N·m).

54. Secure the socket harness to the trailer hitch with two 6 x 40 mm flange bolts and two 6 mm flange nuts.



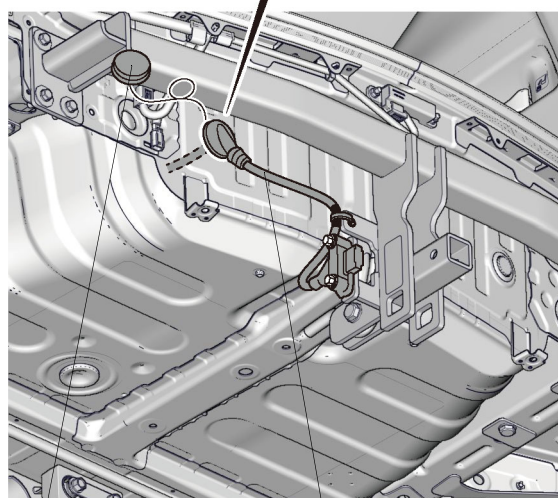
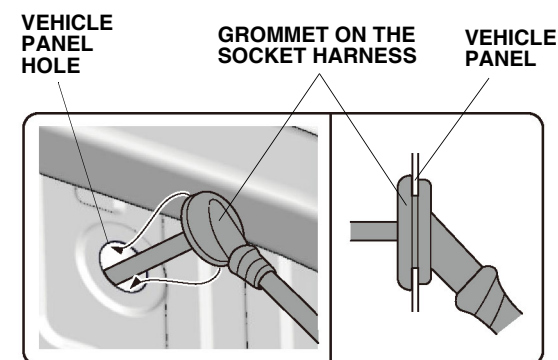
QF32911BG

55. Line up the white tape on the socket harness with the hole on the trailer hitch, and secure the socket harness to the trailer hitch with one wire tie at the white tape on the socket harness.





56. Remove the vehicle grommet. Route the socket harness through the vehicle panel hole.

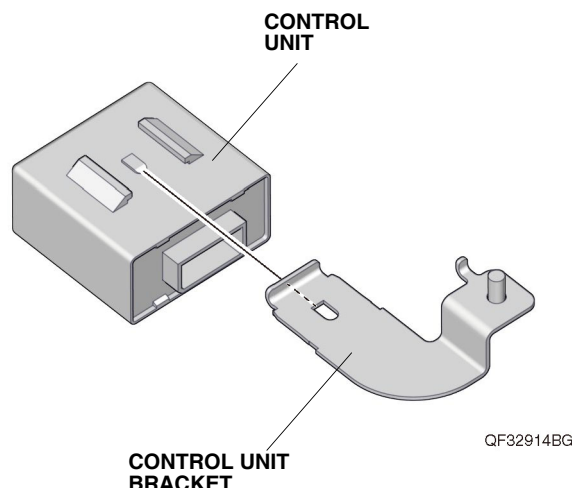


QF32913AG

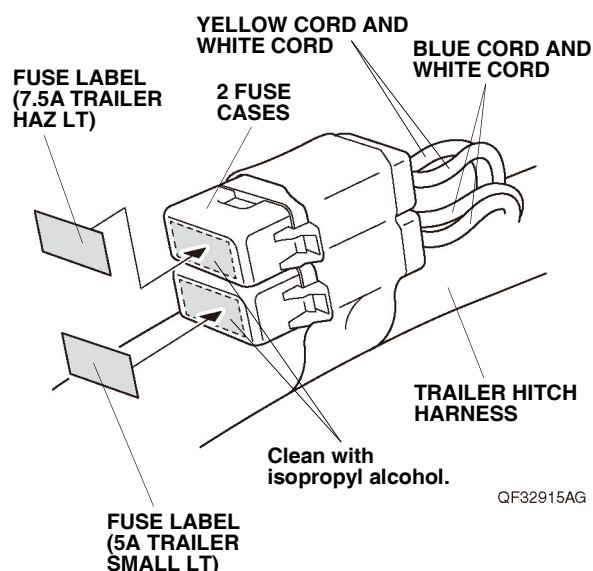
57. Install the grommet on the socket harness into the vehicle panel hole.  
NOTE:

- Install the socket harness by holding the grommet.
- Make sure the grommet is seated properly.

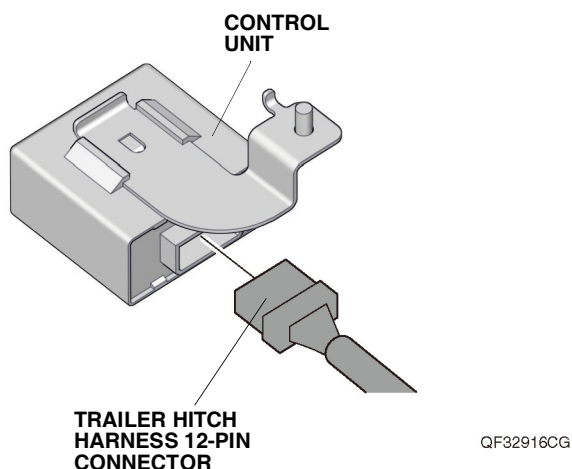
58. Install the control unit bracket to the control unit.



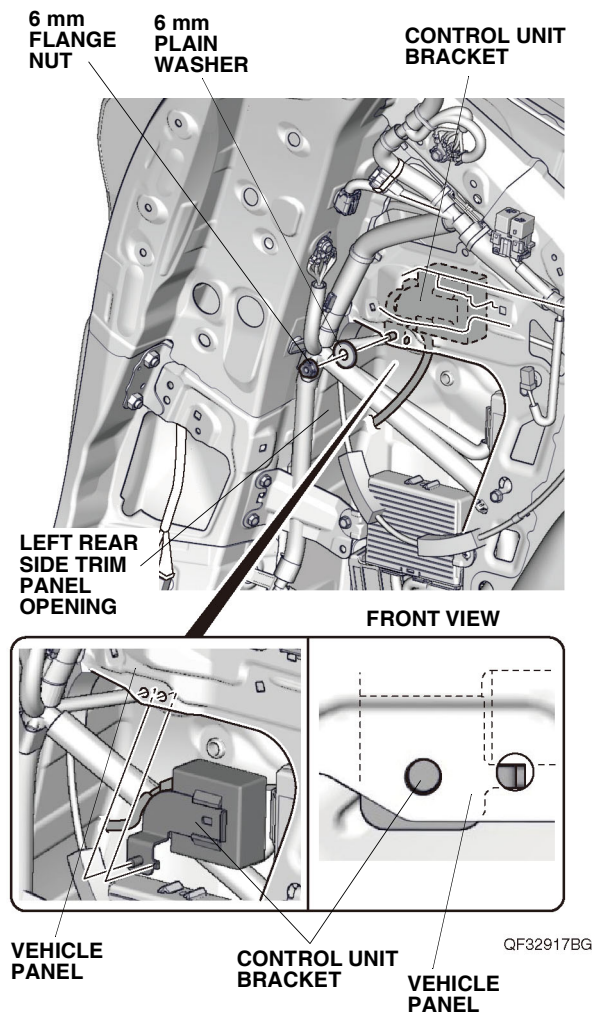
59. Using isopropyl alcohol on a shop towel, thoroughly clean the fuse cases where the fuse labels will attach. Attach the fuse labels (7.5A TRAILER HAZ LT and 5A TRAILER SMALL LT) to the fuse cases on the trailer hitch harness.



60. Plug the trailer hitch harness 12-pin connector into the control unit.



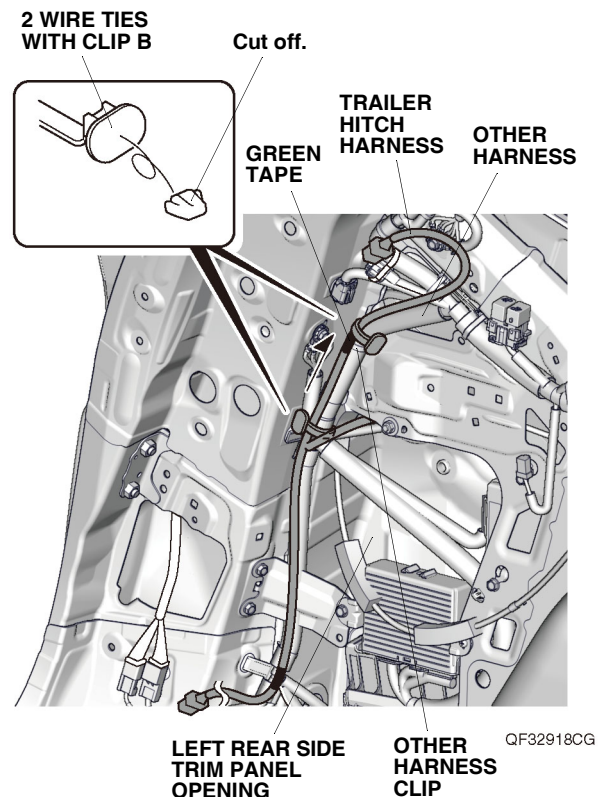
61. Install the control unit bracket to the vehicle panel with one 6 mm flange nut and one 6 mm plain washer.



If the other harness is installed in the area shown, continue with step 62; otherwise, go to step 66.

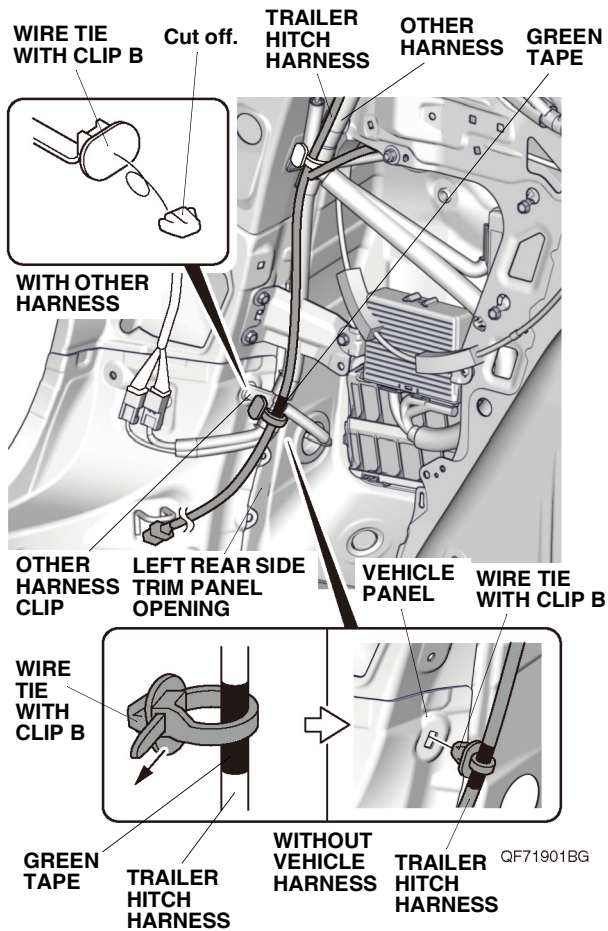
## With other harness

62. Route the trailer hitch harness up along the other harness.



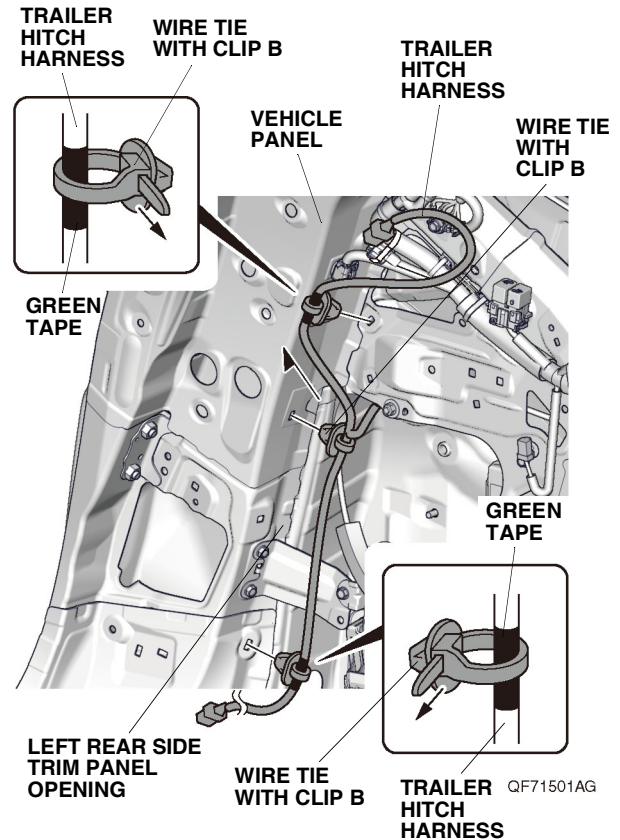
63. Using diagonal cutters, cut off the clip portion off of two wire ties with clip B.
64. Line up the green tape on the trailer hitch harness to the other harness clip, and secure the trailer hitch harness with two wire ties with clip B.

65. Using diagonal cutters, cut off the clip portion off of one wire tie with clip B. Line up the green tape on the trailer hitch harness with the other harness clip, and secure the trailer hitch harness to the other harness with one wire tie with clip B. If the vehicle is not equipped with the vehicle harness, attach one wire tie with clip B around the green tape on the trailer hitch harness. Secure the trailer hitch harness to the vehicle panel with one wire tie with clip B. Go to step 68.



## Without other harness

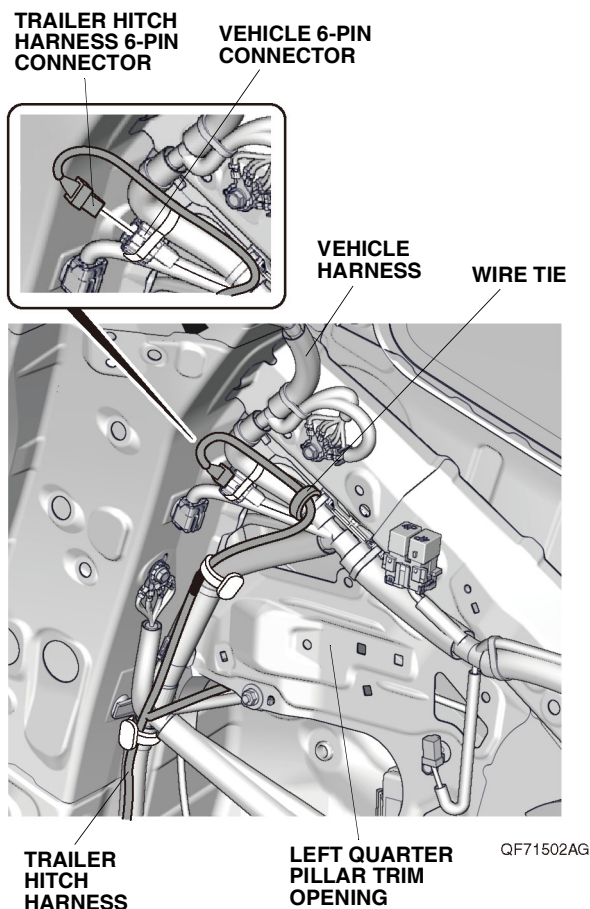
66. Attach two wire ties with clip B around the green tape on the trailer hitch harness, then secure the trailer hitch harness to the vehicle panel with two wire ties with clip B.



67. Secure the trailer hitch harness to the vehicle panel with one wire tie with clip B.



68. Plug the trailer hitch harness 6-pin connector into the vehicle 6-pin connector.

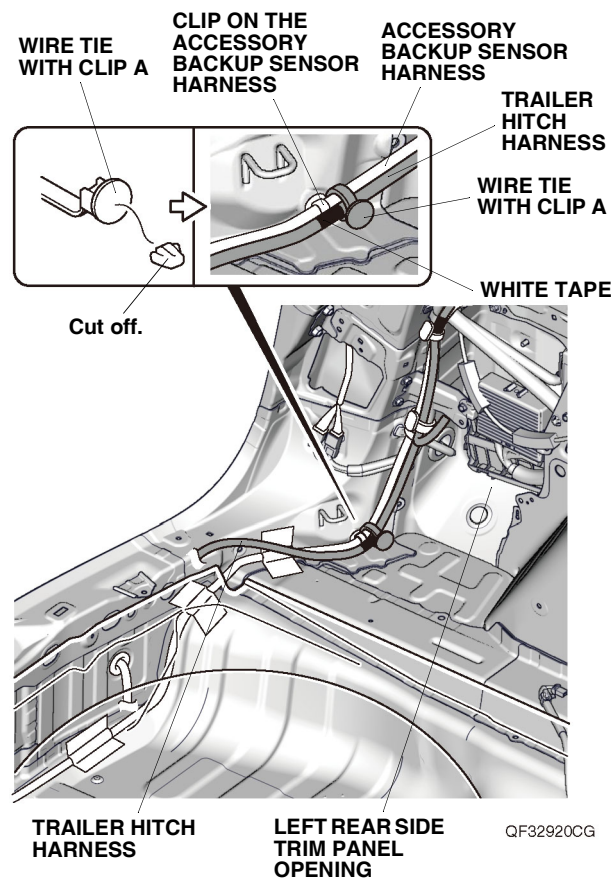


69. Secure the trailer hitch harness to the vehicle harness with one wire tie.

If the vehicle is equipped with the accessory backup sensors, continue with step 70; otherwise, go to step 72.

## With accessory backup sensors

70. Using diagonal cutters, cut off the clip portion from one wire tie with clip A.

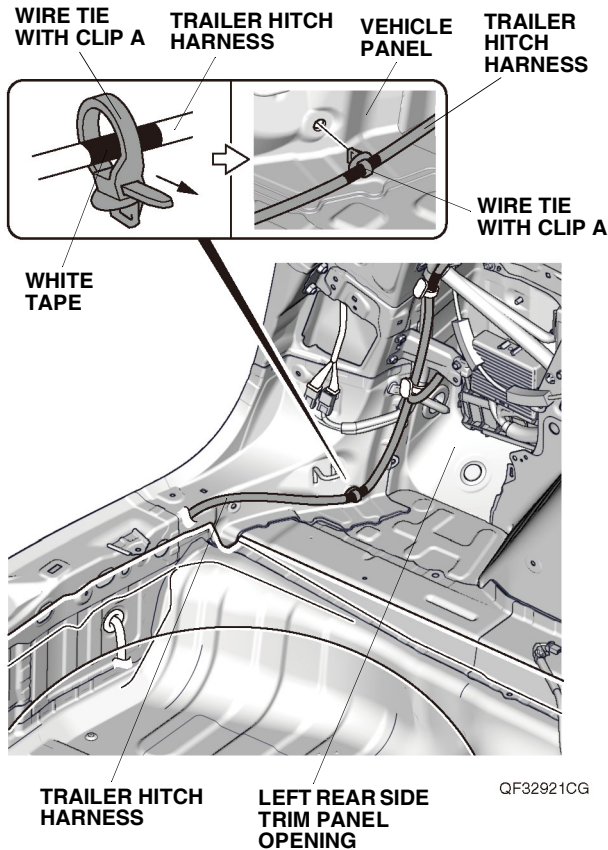


71. Line up the white tape on the trailer hitch harness with the clip on the accessory backup sensor harness, and secure the trailer hitch harness to the accessory backup sensor harness with one wire tie with clip A. Go to step 73.

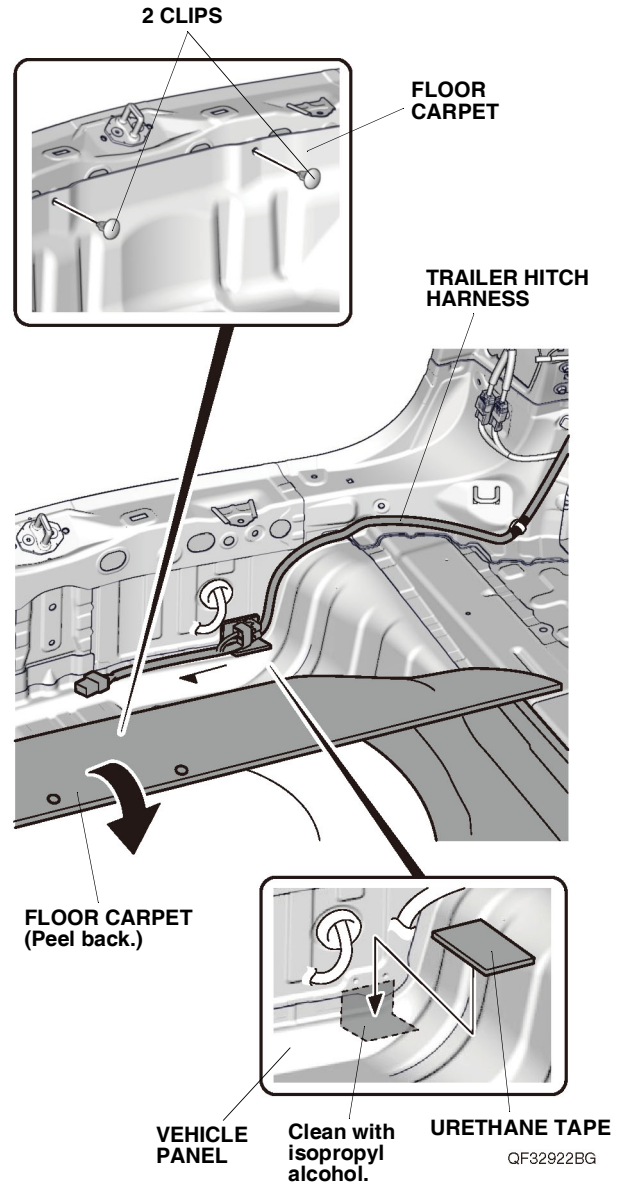


## Without accessory backup sensors

72. Attach one wire tie with clip A around the white tape on the trailer hitch harness, then secure the trailer hitch harness to the vehicle panel with one wire tie with clip A.

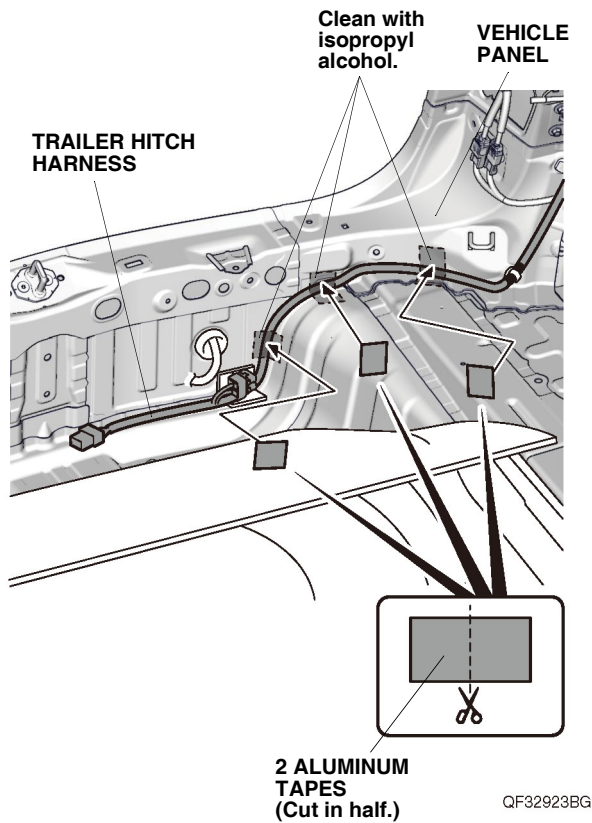


73. Peel back the floor carpet, then route the trailer hitch harness as shown.



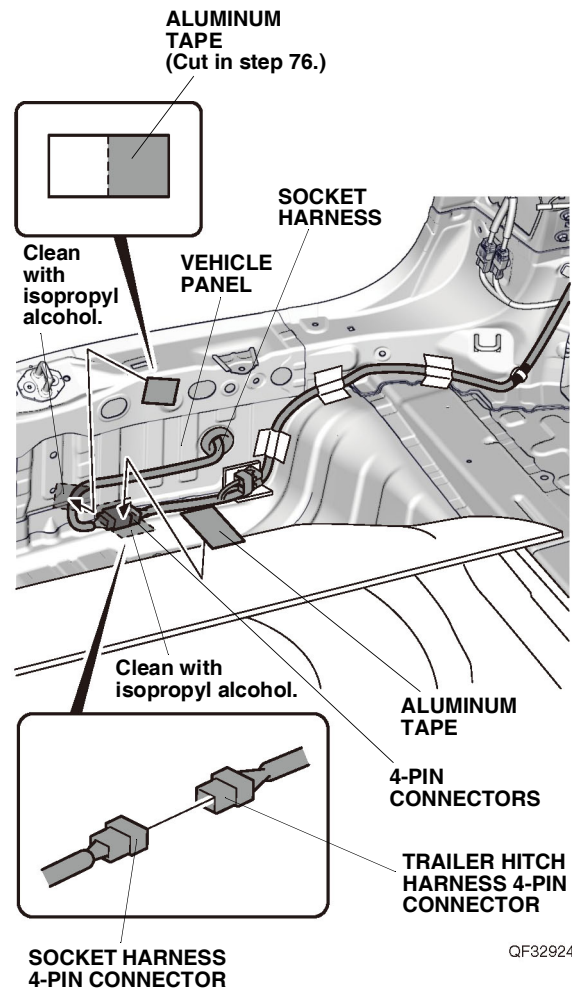
74. Using isopropyl alcohol on a shop towel, thoroughly clean the vehicle panel where the urethane tape will attach. Attach the urethane tape to the vehicle panel as shown.

75. Using isopropyl alcohol on a shop towel, thoroughly clean the vehicle panel where the aluminum tape will attach.



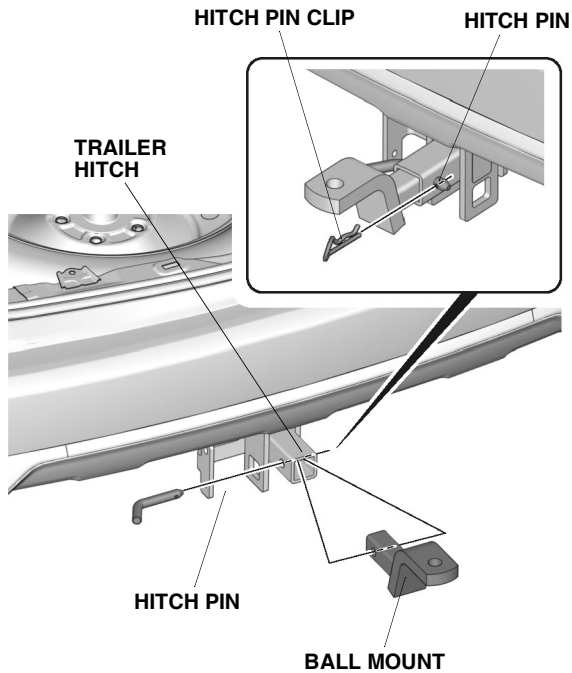
76. Using scissors, cut the two pieces of aluminum tape in half, and secure the trailer hitch harness to the vehicle panel with three halves of aluminum tape as shown.

77. Plug the trailer hitch harness 4-pin connector into the socket harness 4-pin connector.



78. Using isopropyl alcohol on a shop towel, thoroughly clean the vehicle panel where the aluminum tape will attach.
79. Secure the socket harness and 4-pin connectors to the vehicle panel with one half of aluminum tape cut in step 76 and one aluminum tape as shown.

80. Install the rear under cover. With the help of an assistant, install the rear bumper.



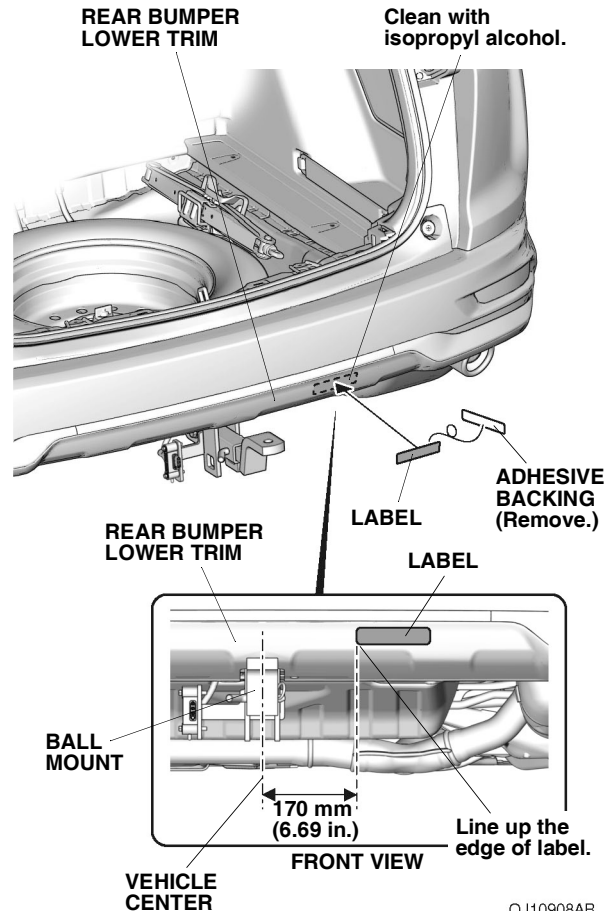
QJ11508AG

81. Secure the ball mount to the trailer hitch with the hitch pin and hitch pin clip.

If the vehicle is equipped with the standard Hands-Free Access Power Tailgate, continue with step 82; otherwise, go to step 84.

## With standard Hands-Free Access Power Tailgate

82. Using isopropyl alcohol on a shop towel, thoroughly clean the rear bumper lower trim where the label will attach.

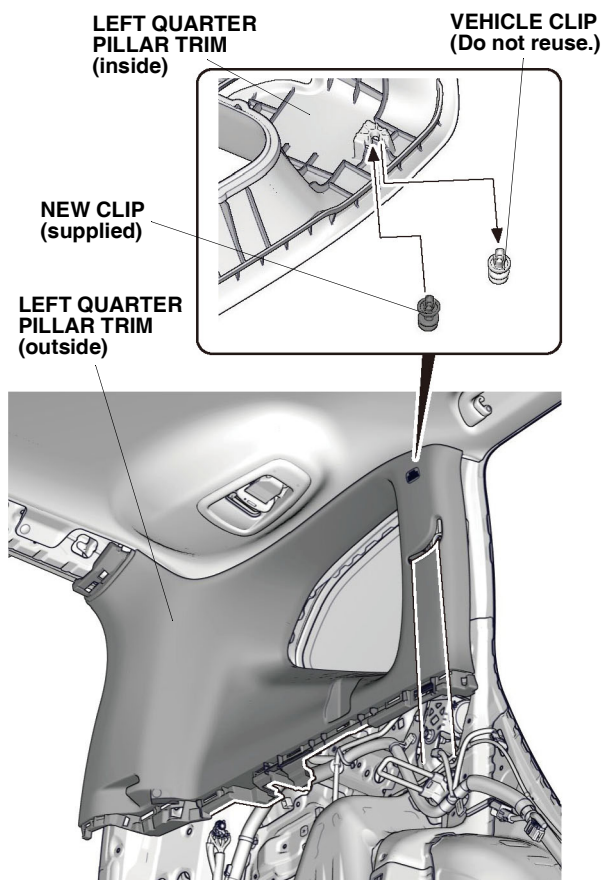


QJ10908AB

83. Remove the adhesive backing from the label, and attach the label to the rear bumper lower trim as shown.

**NOTE:** Remove the label after confirm. Please advice the customer.

84. Remove the vehicle clip, and install the new clip to the left quarter pillar trim.



QF92702AG

85. Check the overlap between the headliner and the left quarter pillar trim.  
**NOTE:** Check and adjust the overlap as described in the service information.
86. Install the left quarter pillar trim.  
**NOTE:** Make sure the side curtain airbag is not tucked under the clip. Do not push the left quarter pillar trim excessively.
87. Check that all wire harnesses are routed properly and all connectors are plugged in.
88. Install all removed parts.
89. Connect the negative cable to the battery.
90. Press and hold the audio unit power button for 2 seconds to restore the audio and navi (if equipped) system functions.
91. Set the clock on vehicles without navigation.
92. Provide rear bumper beam and six bolts (removed in step 24) to customer.

## Check the Operation of the Trailer Hitch

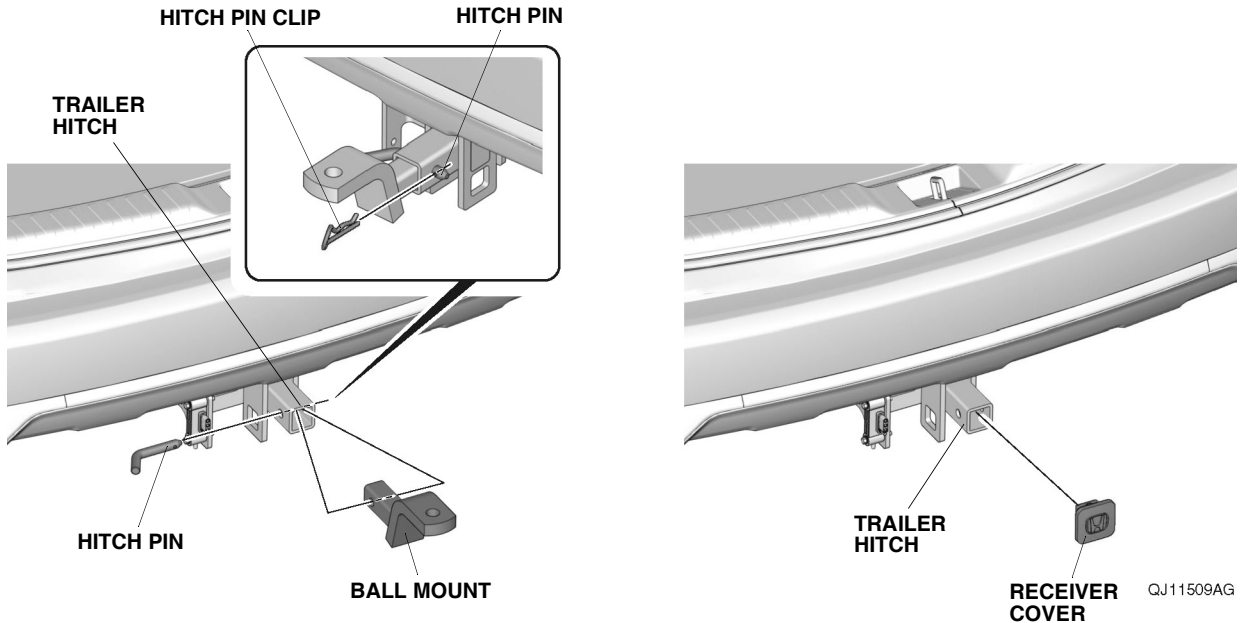
93. Refer to the "TRAILER HARNESS TESTER", and do the "Trailer Harness Circuit Check".

Put a copy of this page in the glove box for your customer.

Install the ball mount to the trailer hitch using a hitch pin clip and hitch pin.

Whenever you remove the hitch pin clip, the hitch pin, and the ball mount, store them securely in the cargo area. Install the receiver cover into the opening at the end of the trailer hitch.

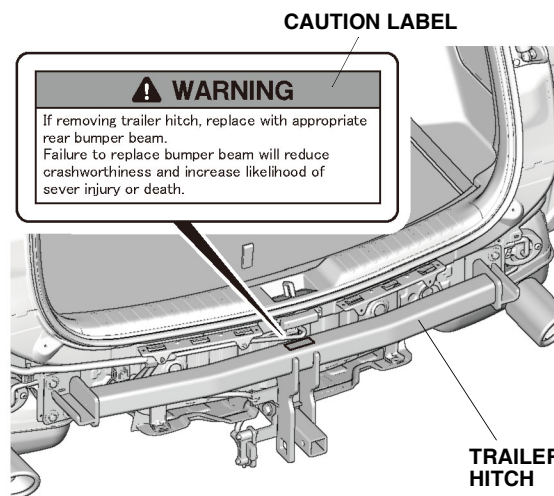
When you reinstall the ball mount, store the receiver cover in the cargo area.



After the first 600 miles (1,000 km) of towing, have your Honda dealer check the tightness of the trailer hitch bolts.

## **⚠ WARNING**

If you remove the trailer hitch, replace with the appropriate rear bumper beam. Failure to replace the rear bumper beam will reduce crashworthiness and increase the likelihood of severe injury or death in a collision.



QF80302AN