



## HONDA INSTALLATION INSTRUCTIONS

### Accessory

HANDS-FREE ACCESS  
POWER TAILGATE

### Application

2022 CR-V  
2022 CR-V HYBRID

### Publications No.

VERSION 1

### Issue Date

AUG 2021

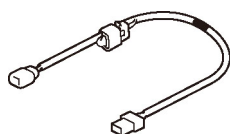
### PARTS LIST

Hands-Free Access Power Tailgate Attachment Kit  
P/N 08U59-TLA-101C

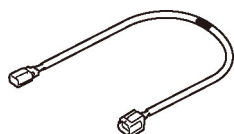
Switch



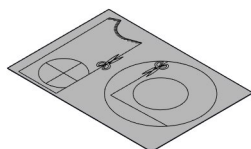
Hands-free access harness



Subharness



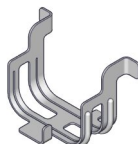
Template  
(Not used)



Shim  
(Not used)



Switch bracket



Narrow wire tie



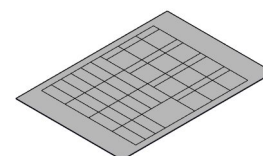
Clip



3 Wire ties



Fuse label



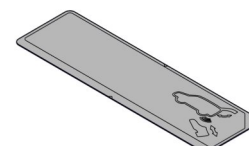
4 Bumper clips A  
(1 Not used)



2 Self-tapping screws



Label A

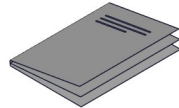


## Hands-Free Access Power Tailgate Unit Kit (Without accessory trailer hitch) P/N 08U59-TLA-1B0B

Hands-free access unit



Accessory user's information manual



## Hands-Free Access Power Tailgate Unit Kit (With accessory trailer hitch) P/N 08U59-TLA-1B0A

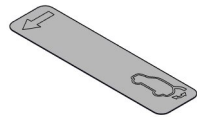
Hands-free access unit



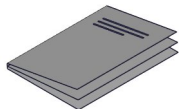
Bumper clip B



Label B



Accessory user's information manual



## TOOLS AND SUPPLIES REQUIRED

Phillips screwdriver

Small flat-tip screwdriver

10 mm Open end wrench

Stubby Phillips screwdriver

Pushpin

3 mm Drill bit

Eye protection (face shield, safety goggles, etc.)

File

Blanket

Isopropyl alcohol

Shop towel

14 mm and 26 mm Hole saws

Drill

Masking tape

5 mm Hex wrench

Utility knife

Rubber mallet

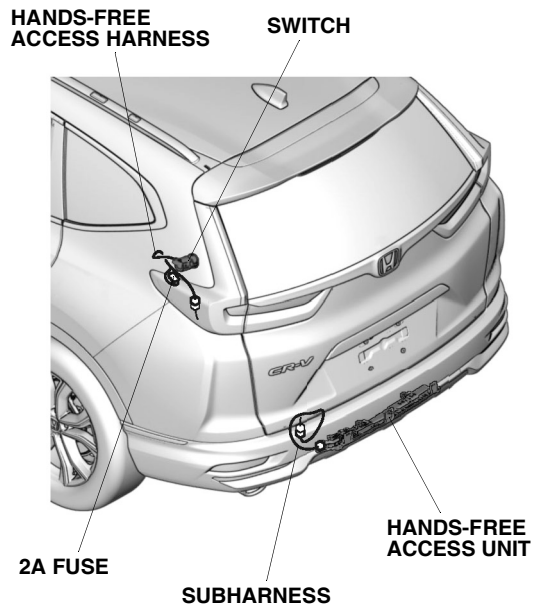
Diagonal cutters

Ruler

*The following tools are available through the Honda Tool and Equipment Program. On the iN, click on Service > Service Bay > Tool and Equipment Program, then enter the number under "Search." Or, call 888-424-6857.*

- Trim Tool Set (T/N SOJATP2014)
- Plastic Trim Tool (T/N SILTRIMTL10)

## Illustration of the Hands-Free Access Power Tailgate on the Vehicle

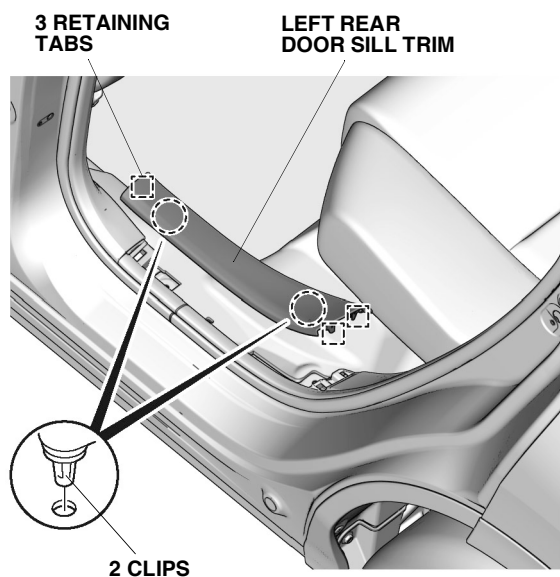


QJ10701AB

## INSTALLATION

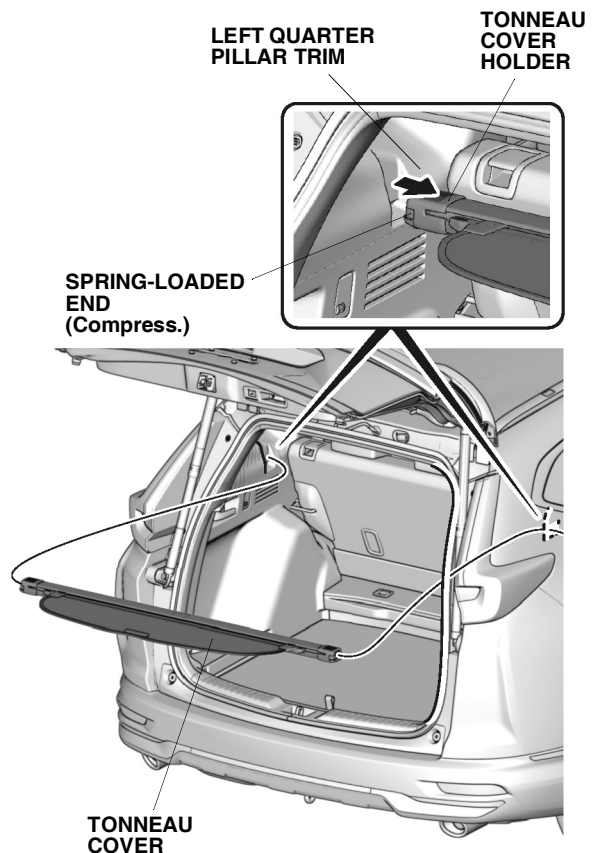
**Customer Information:** The information in this installation instruction is intended for use only by skilled technicians who have the proper tools, equipment, and training to correctly and safely add equipment to your vehicle. These procedures should not be attempted by “do-it-yourselfers.”

1. Disconnect the negative cable from the battery, then wait at least 3 minutes before starting work.
2. Remove the left rear door sill trim.



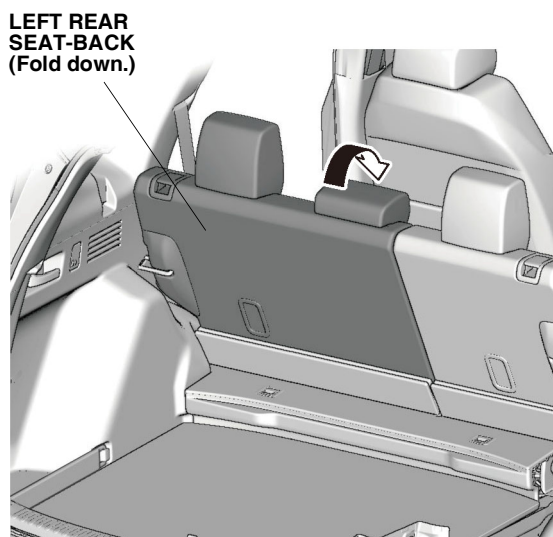
QHD2502AA

3. If equipped, remove the tonneau cover.



QHD2503AA

4. Fold down the left rear seat-back.

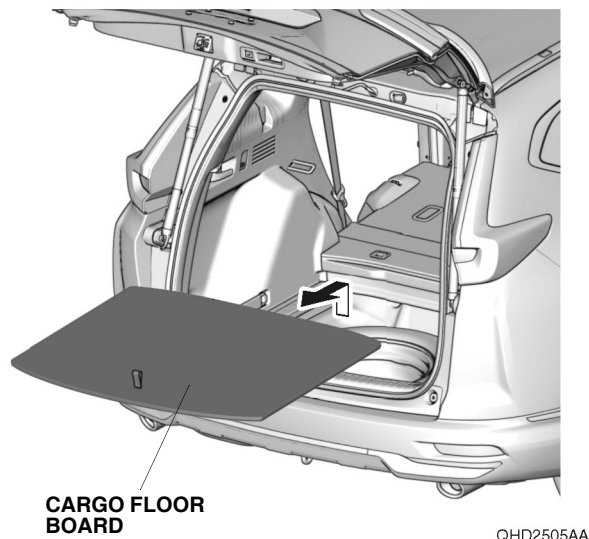


QF21602BG

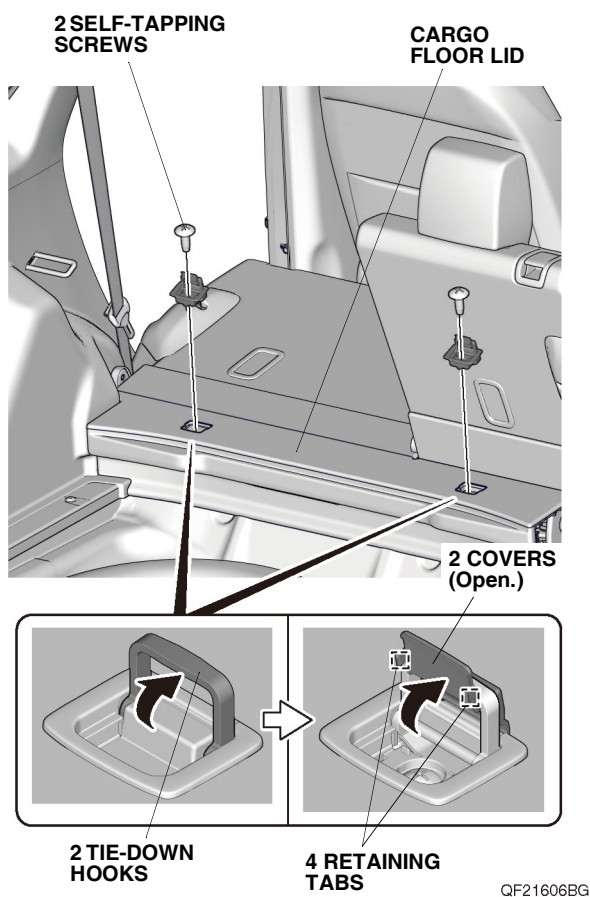
If the vehicle is petrol models, continue with step 5; if the vehicle is hybrid models, go to step 16.

## Petrol models

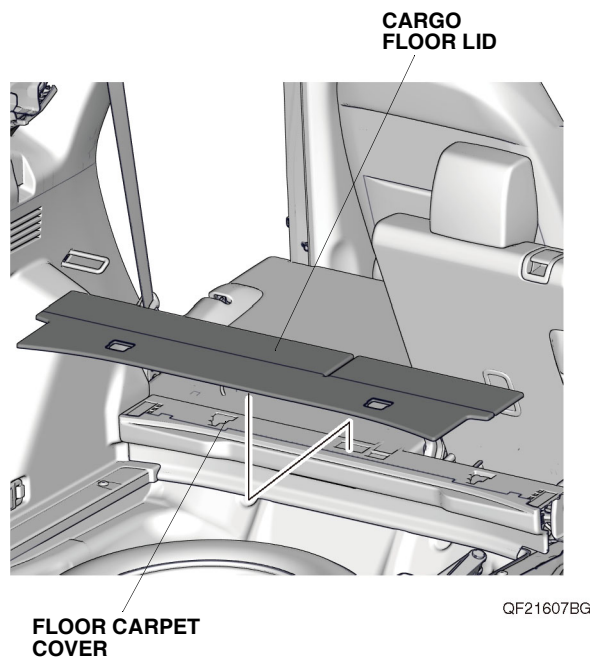
5. Remove the cargo floor board.



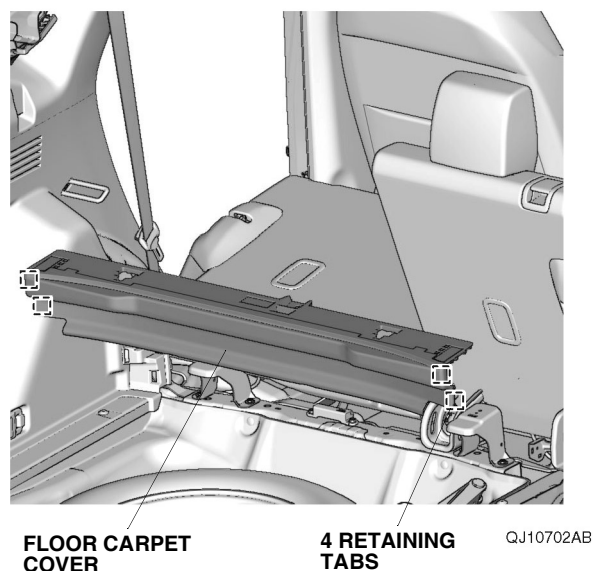
6. Remove the two tie-down hooks.



7. Remove the cargo floor lid.

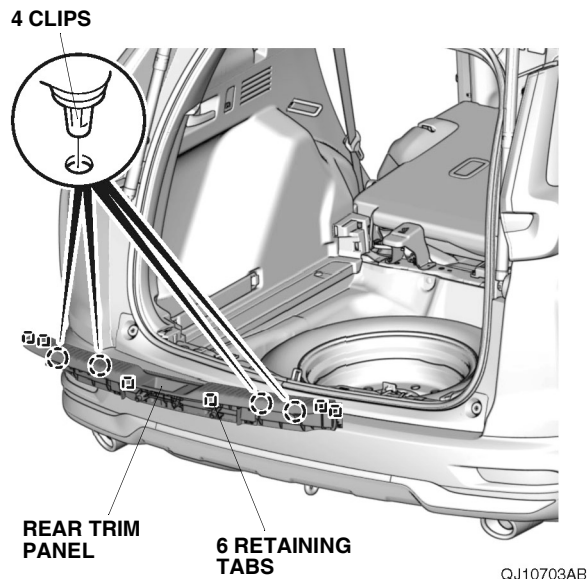


8. Remove the floor carpet cover.

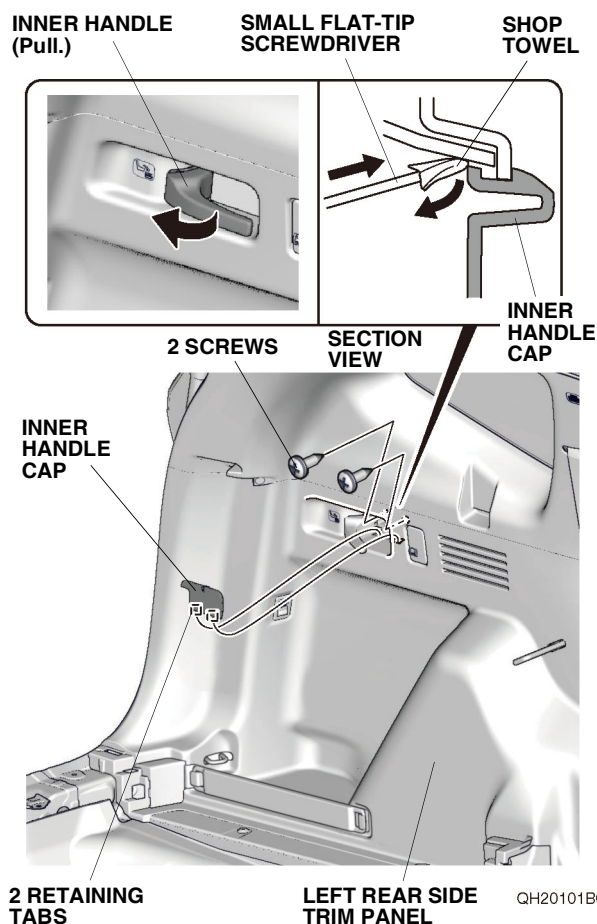




9. Remove the rear trim panel.

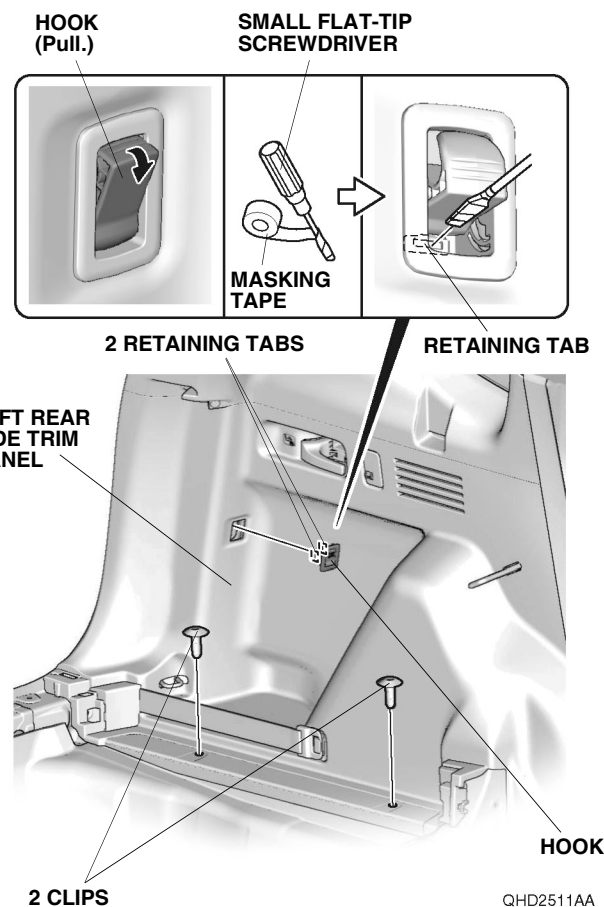


10. Gently pull the inner handle on the left rear side trim panel, and use a small flat-tip screwdriver wrapped with a shop towel to remove the inner handle cap as shown.

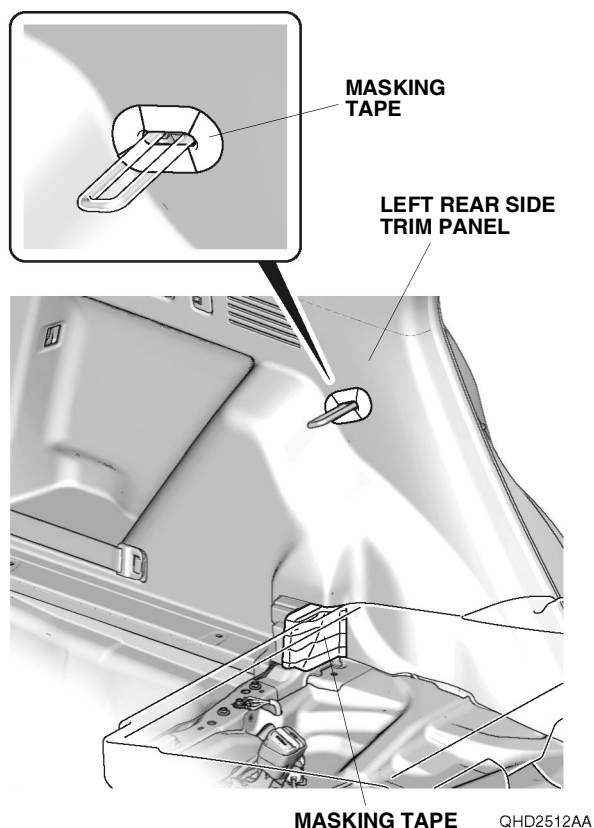


11. Remove the two screws from the left rear side trim panel.

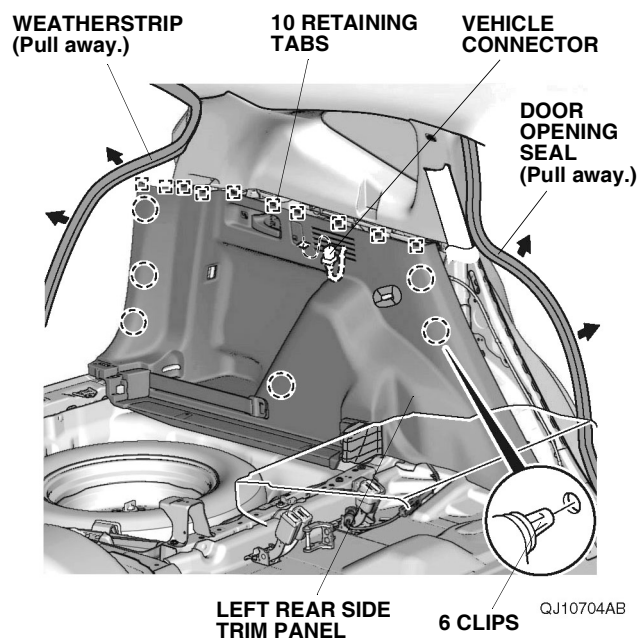
12. Gently pull the hook on the left rear side trim panel, and use a small flat-tip screwdriver wrapped with masking tape to remove the hook as shown. Then, remove the two clips from the left rear side trim panel.



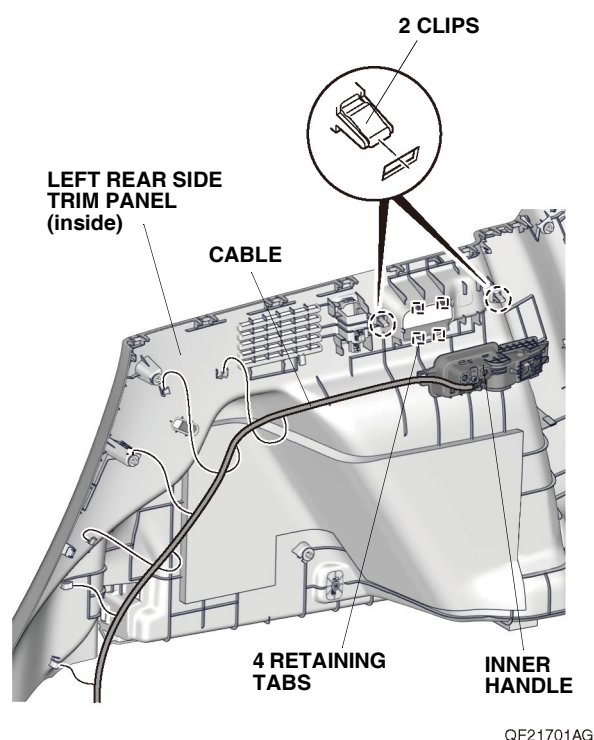
13. Apply masking tape to the left rear side trim panel as shown.



14. Pull away the door opening seal and weatherstrip from around the left rear side trim panel. Remove the left rear side trim panel, and unplug the vehicle connector.

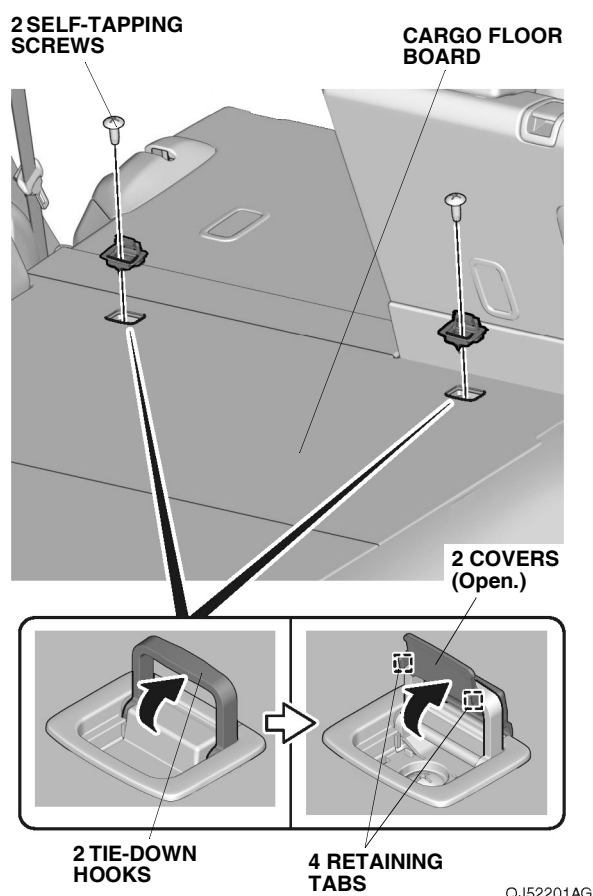


15. Release the cable from the left rear side trim panel, then remove the inner handle. Go to step 27.

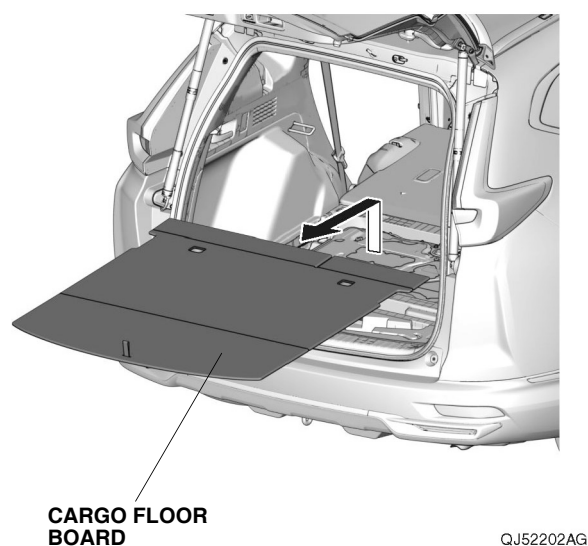


## Hybrid models

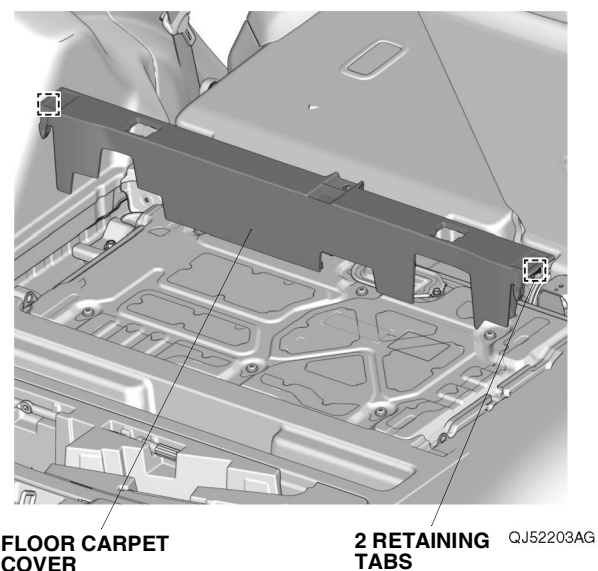
16. Remove the two tie-down hooks.



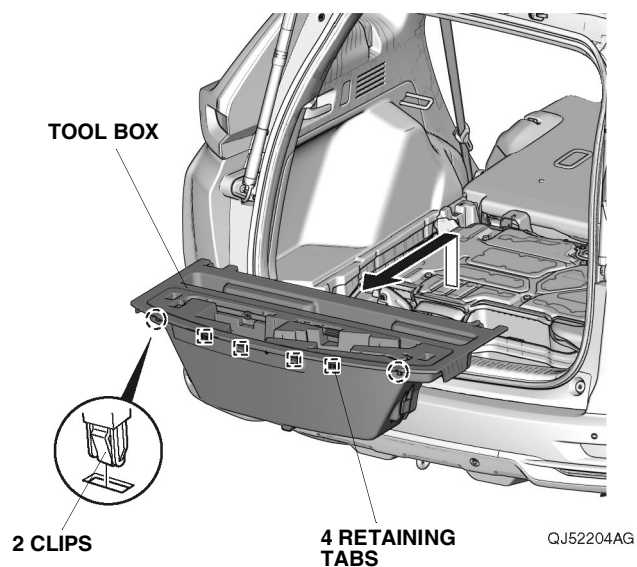
17. Remove the cargo floor board.



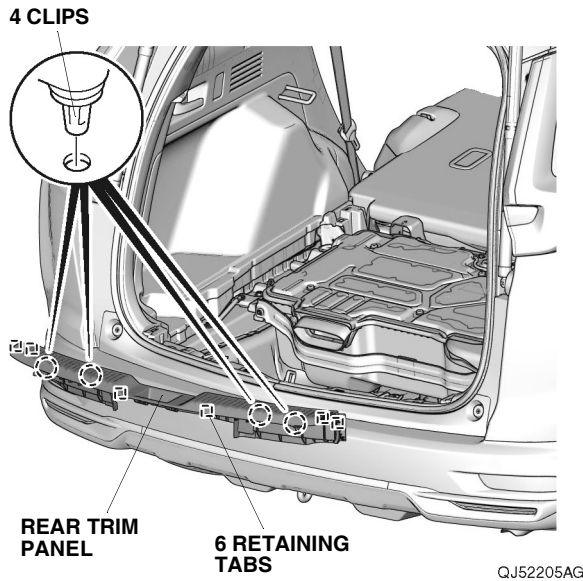
18. Remove the floor carpet cover.



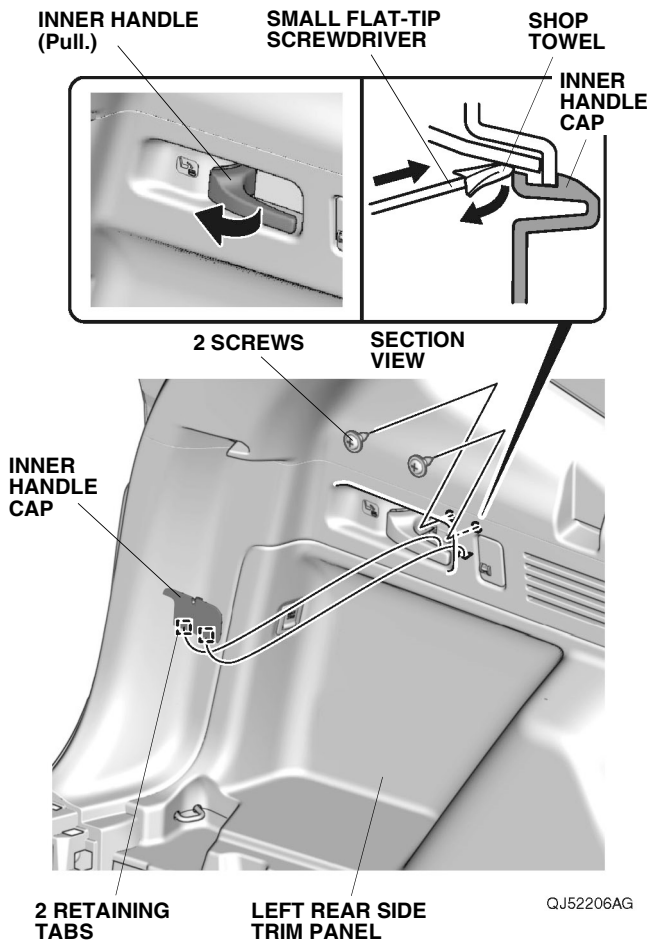
19. Remove the tool box.



20. Remove the rear trim panel.

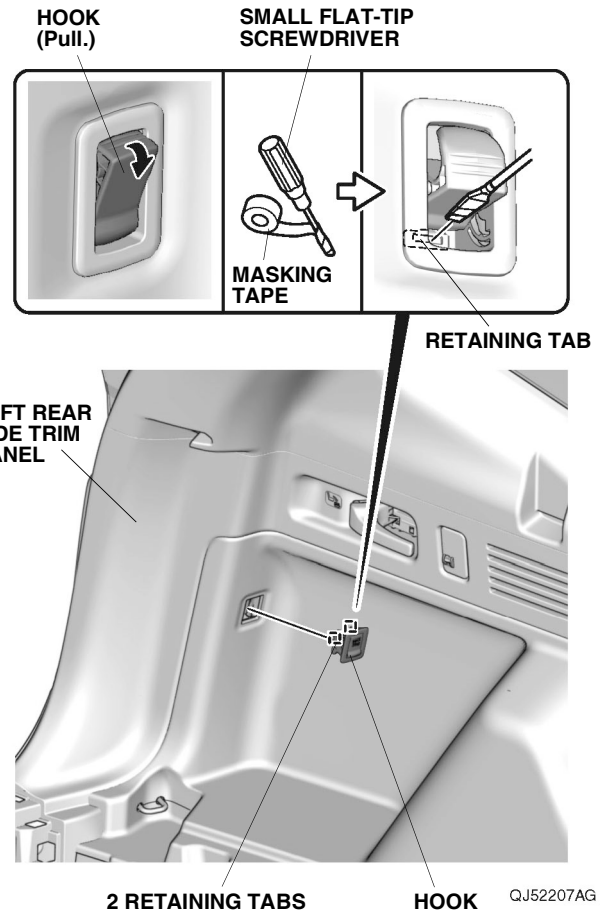


21. Gently pull the inner handle on the left rear side trim panel, and use a small flat-tip screwdriver wrapped with a shop towel to remove the inner handle cap as shown.



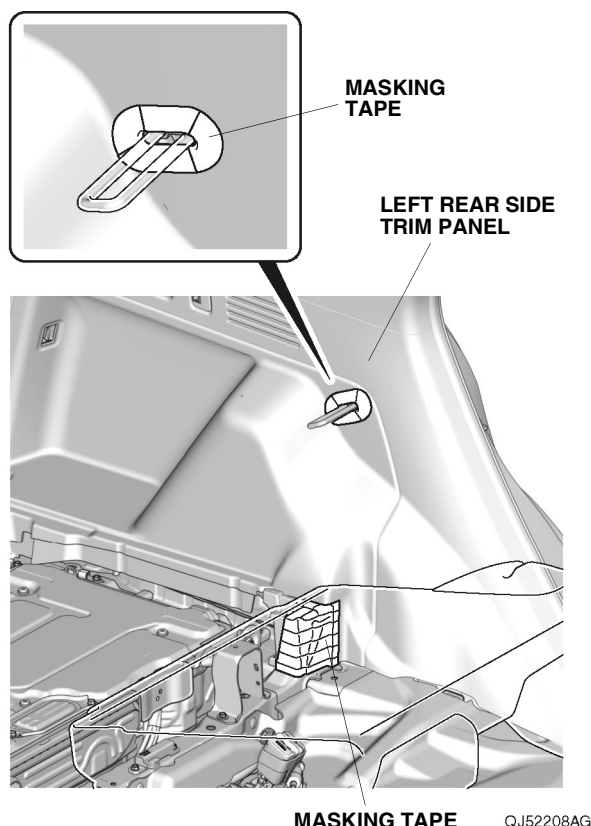
22. Remove the two screws from the left rear side trim panel.

23. Gently pull the hook on the left rear side trim panel, and use a small flat-tip screwdriver wrapped with masking tape to remove the hook as shown.

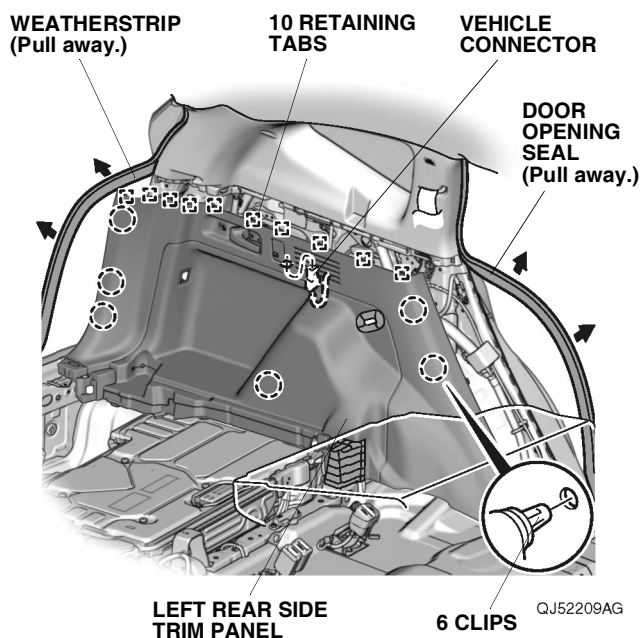




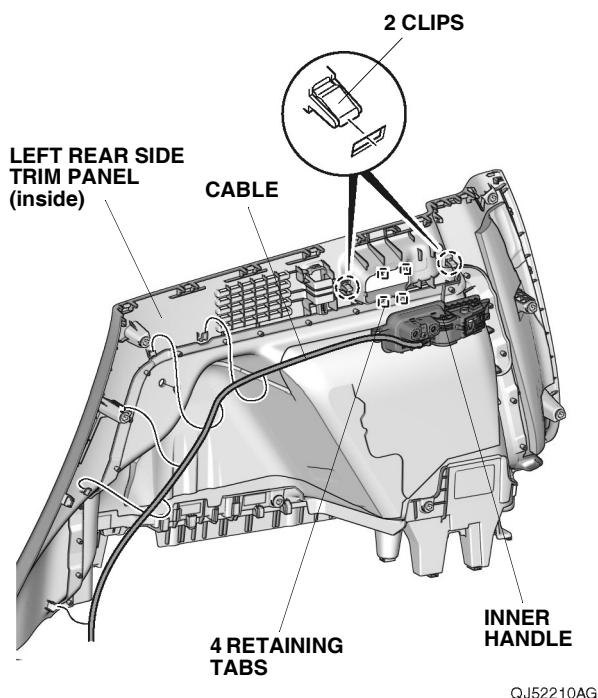
24. Apply masking tape to the left rear side trim panel as shown.



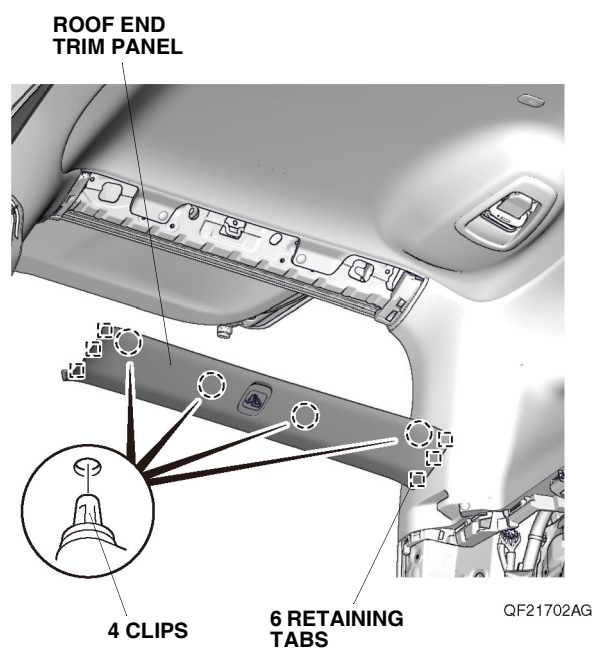
25. Pull away the door opening seal and weatherstrip from around the left rear side trim panel. Remove the left rear side trim panel, and unplug the vehicle connector.



26. Release the cable from the left rear side trim panel, then remove the inner handle.

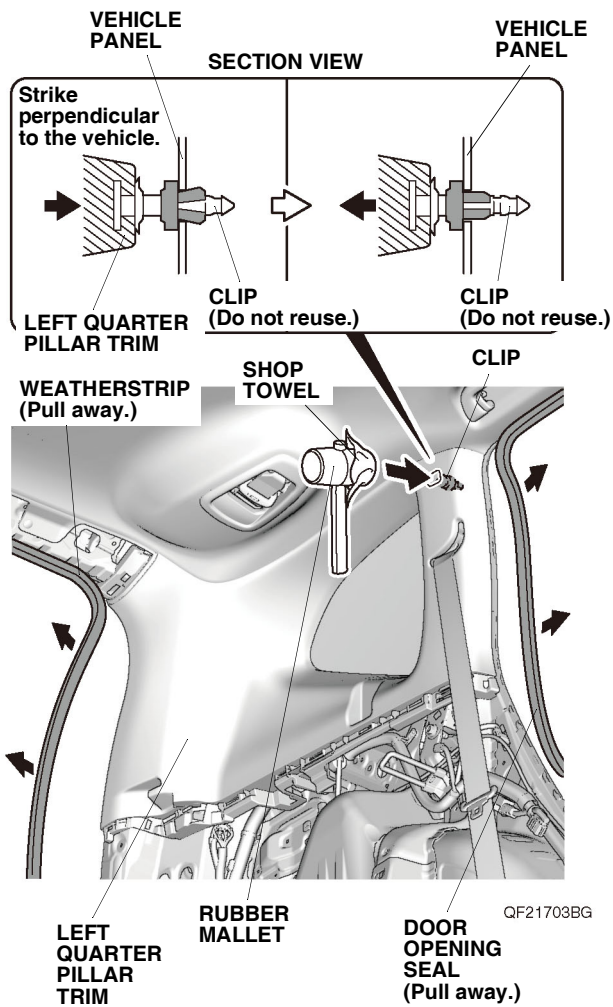


27. Remove the roof end trim panel.



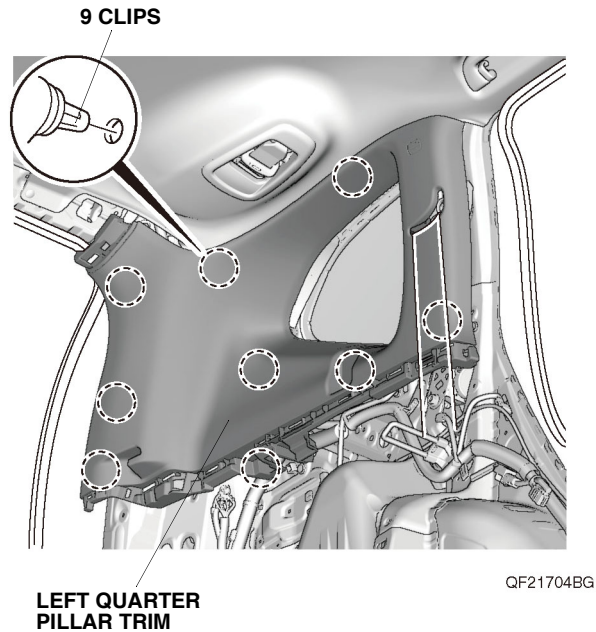


28. Pull away the door opening seal and weatherstrip from around the left quarter pillar trim.

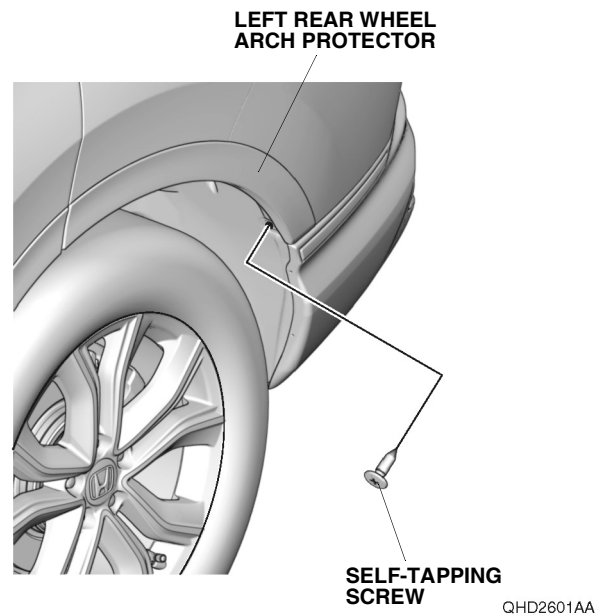


29. Using a rubber mallet wrapped with a shop towel, lightly tap the area marked **SIDE CURTAIN AIRBAG** on the left quarter pillar trim to push in the clip. Make sure to strike the area perpendicular to the vehicle.

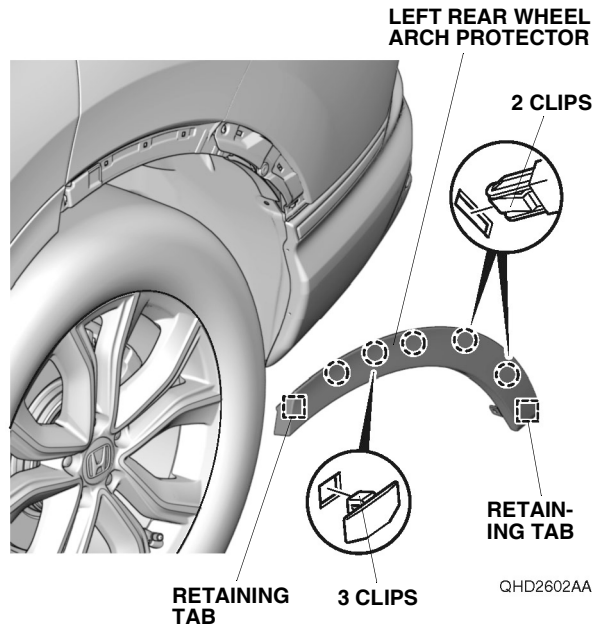
30. Remove the left quarter pillar trim.



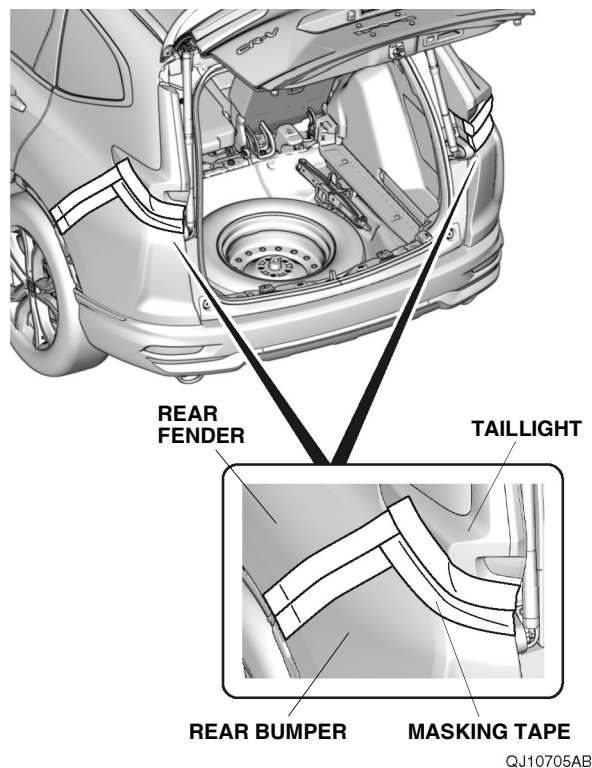
31. Remove the self-tapping screw from the left rear wheel arch protector.



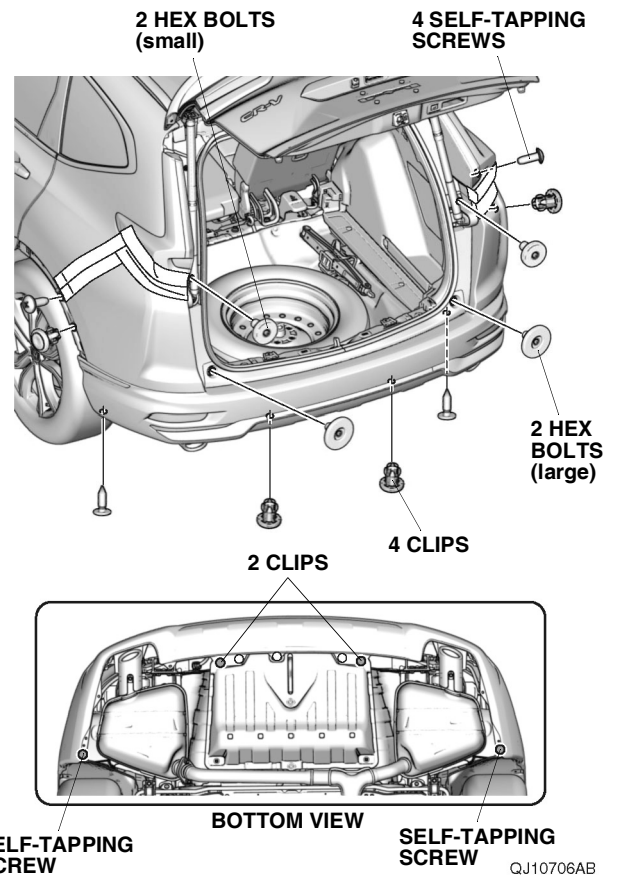
32. Remove the left rear wheel arch protector.



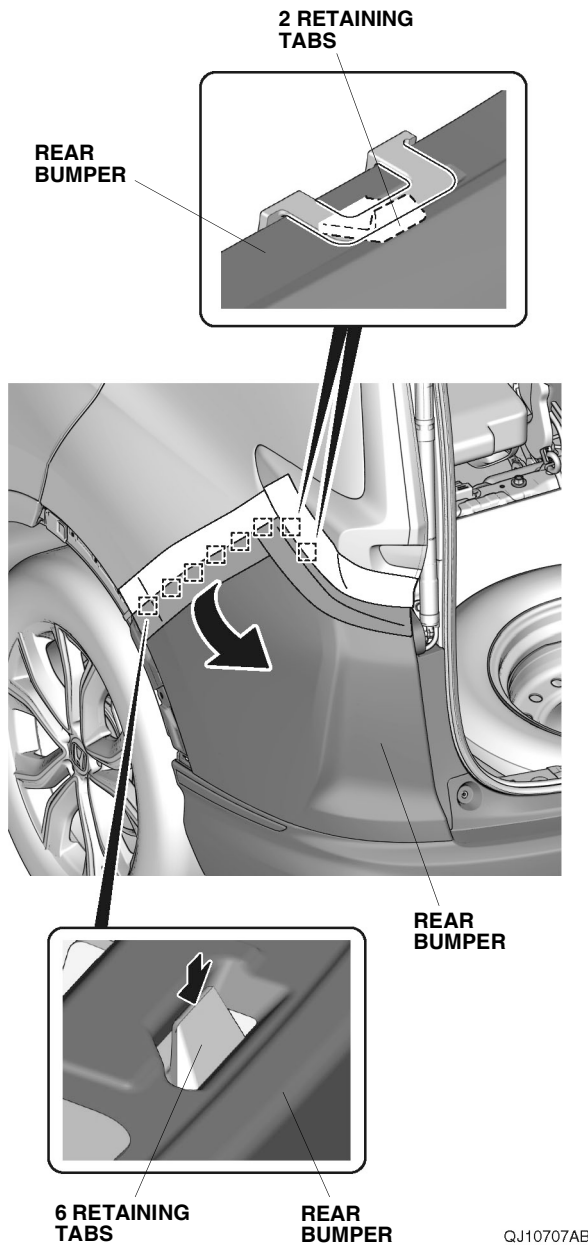
33. Repeat steps 31 and 32 on the right side of the vehicle.
34. Remove the rear bumper:
- Apply masking tape on each side as shown.



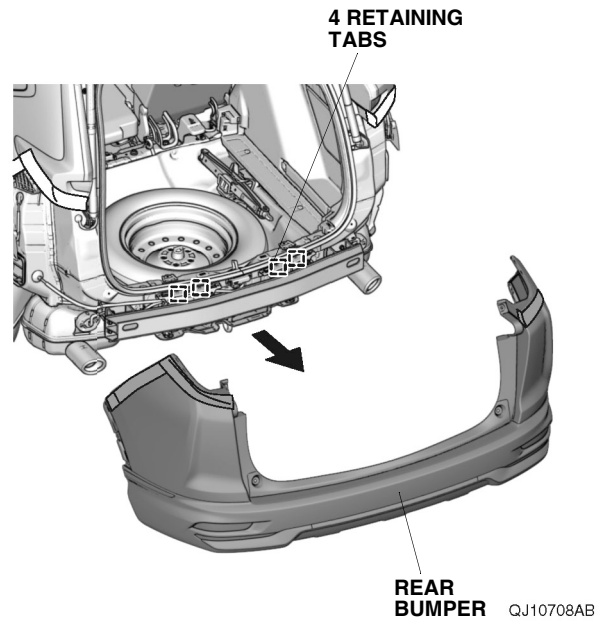
- Remove the four self-tapping screws, four clips, two hex bolts (large), and two hex bolts (small) as shown.



- With the help of an assistant, release the eight retaining tabs on each side.



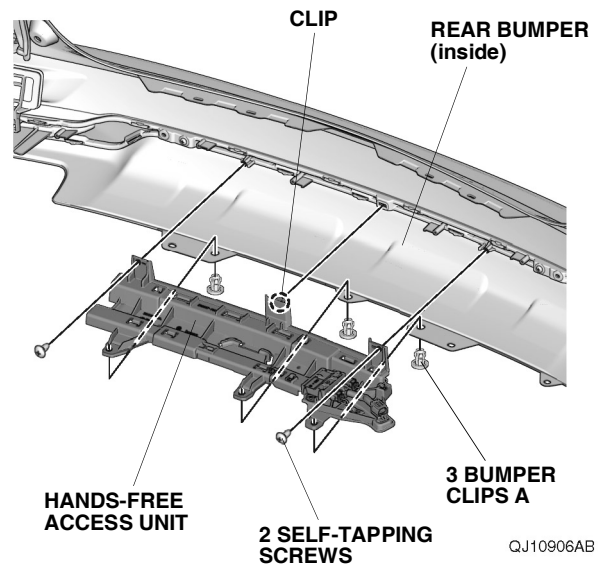
- With the help of an assistant, remove the rear bumper.
- Place the rear bumper on a blanket.



If the vehicle is equipped with the accessory trailer hitch, go to step 36; otherwise, continue with step 35.

## Without accessory trailer hitch

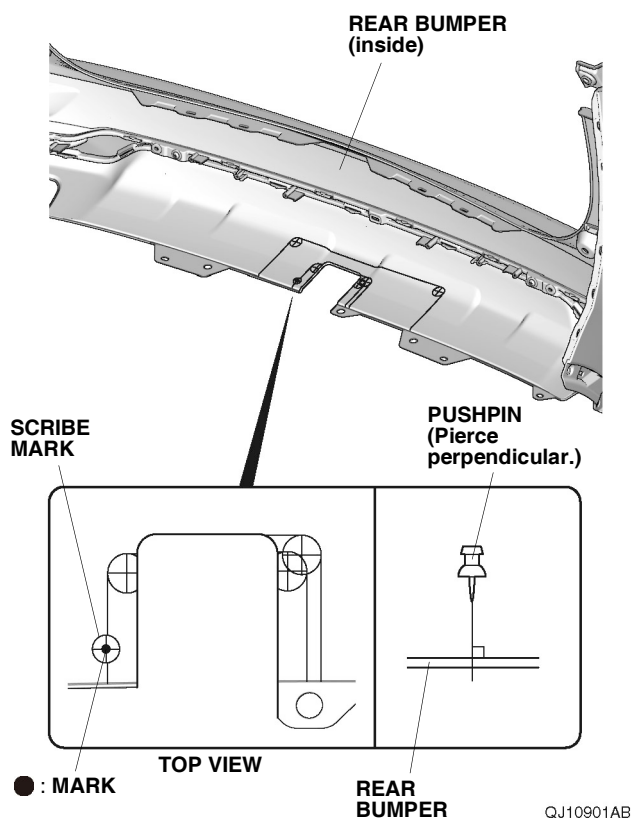
35. Install the hands-free access unit to the rear bumper with two self-tapping screws, three bumper clips A, and one clip. Go to step 41.



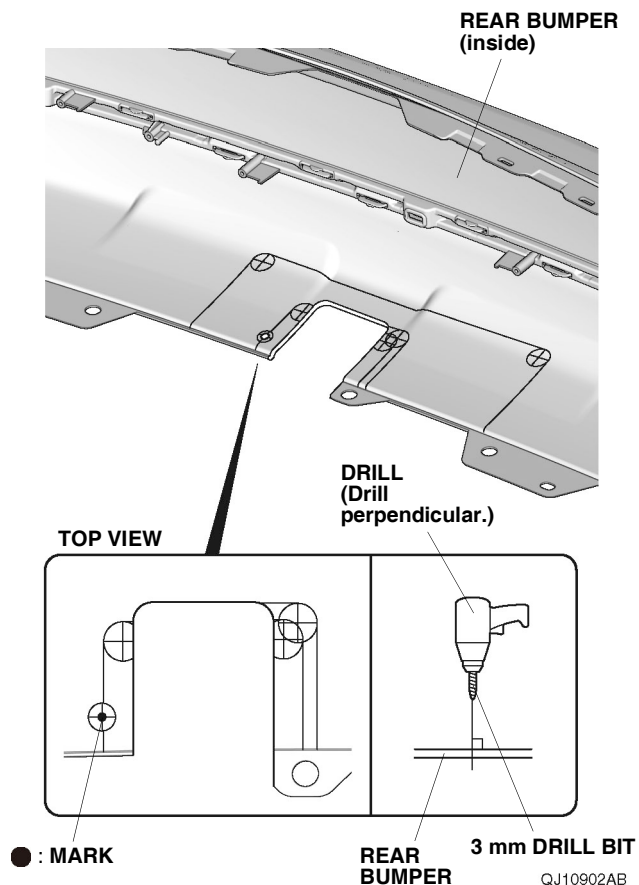
## With accessory trailer hitch

36. Using a pushpin, pierce the rear bumper as shown.  
NOTE:

- If you are also installing the accessory trailer hitch, cut off the rear bumper as described in the installation instructions of the accessory trailer hitch before this procedure.
- Make sure to pierce the scribe mark perpendicular to the rear bumper.

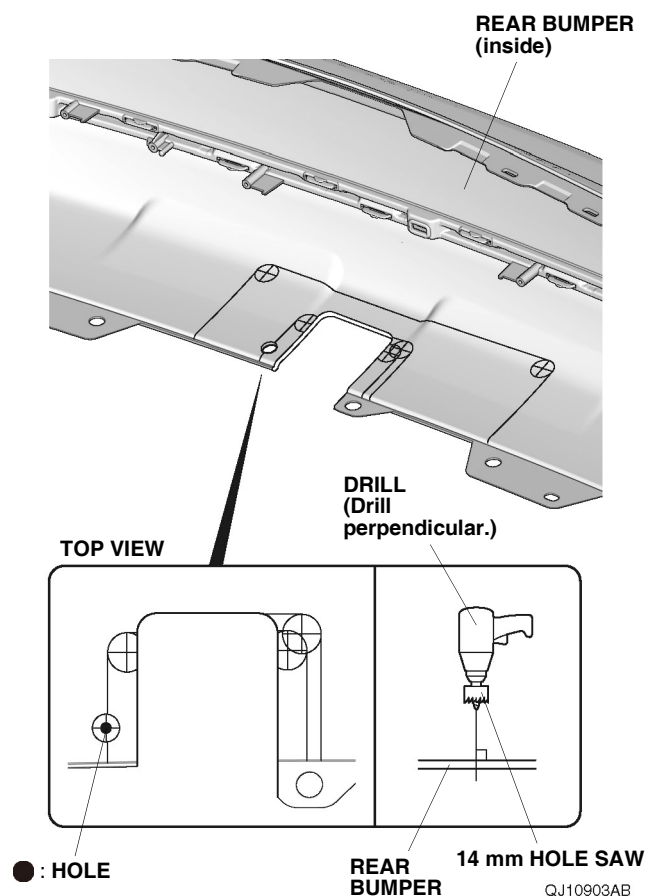


37. While wearing eye protection, drill the pierced mark on the rear bumper with a 3 mm drill bit.  
NOTE: Make sure to drill perpendicular to the rear bumper.

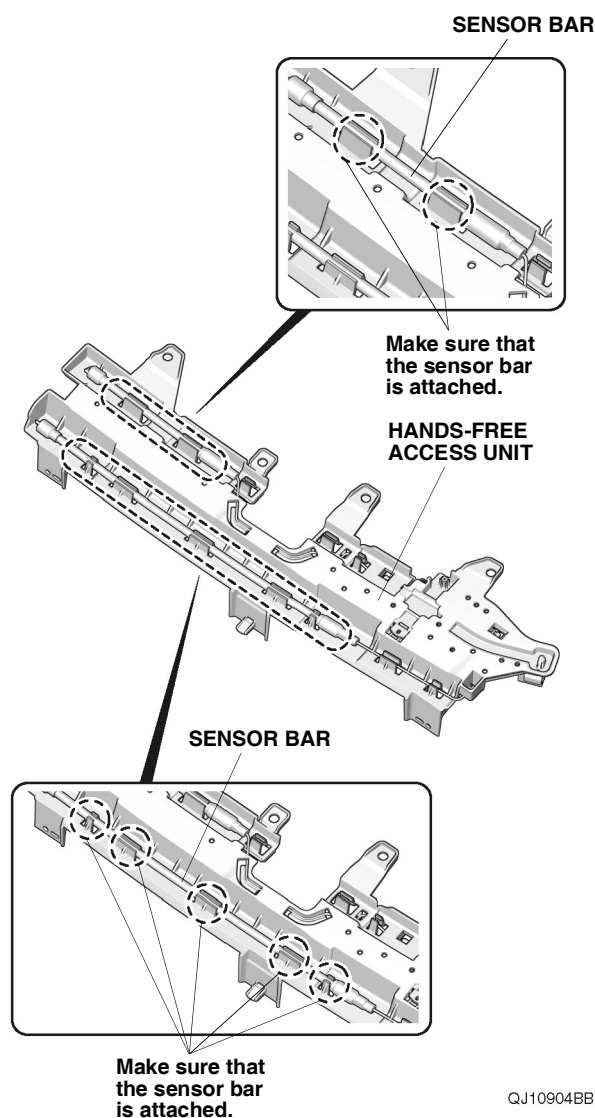


38. While wearing eye protection, enlarge the 3 mm hole to 14 mm using a 14 mm hole saw. Remove any burrs.

NOTE: Make sure to drill perpendicular to the rear bumper.

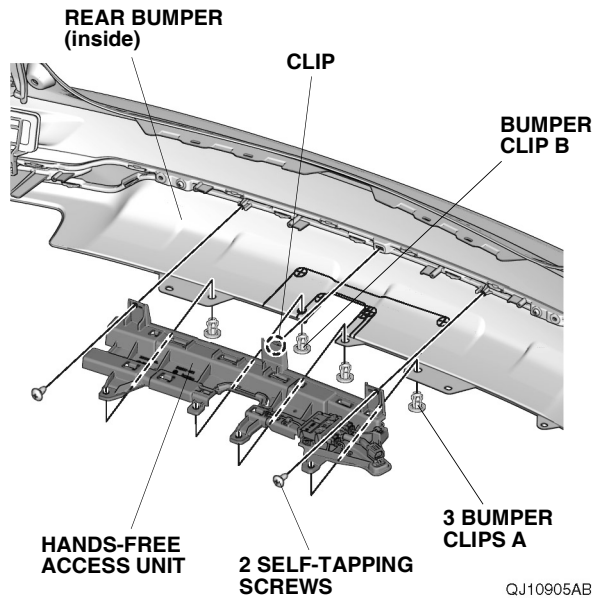


39. Check the installation condition of the sensor bars in the hands-free access unit.

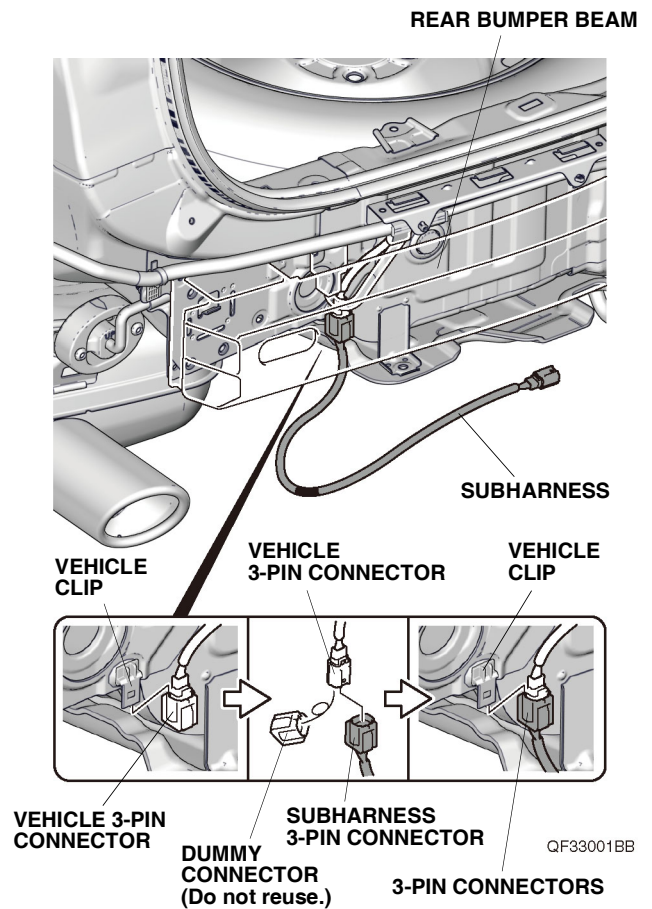




40. Install the hands-free access unit to the rear bumper with two self-tapping screws, three bumper clips A, one bumper clip B and one clip.

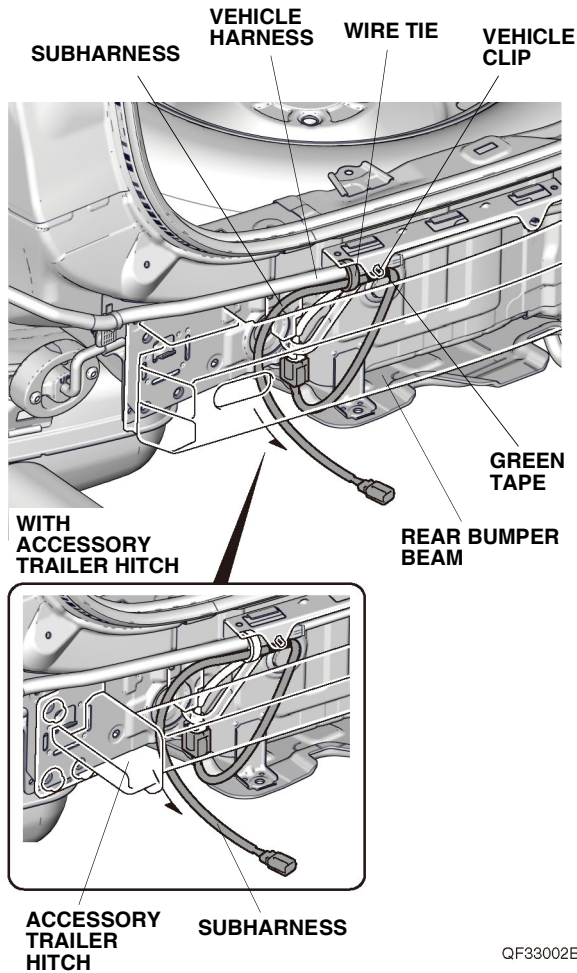


41. Release the vehicle connector from the vehicle clip, and remove the dummy connector from the vehicle 3-pin connector.



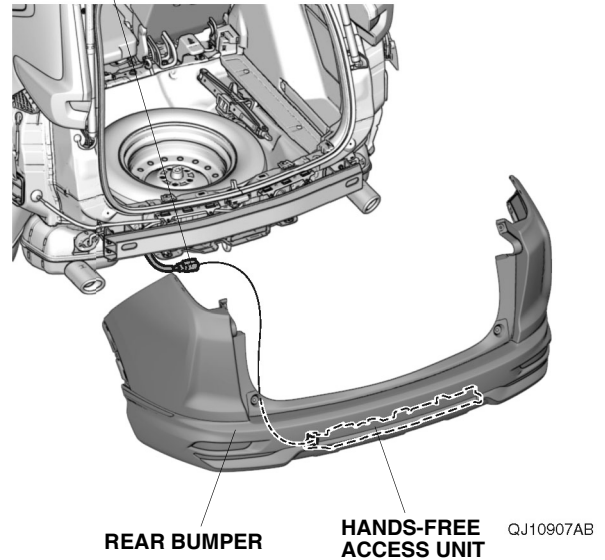
42. Plug the vehicle 3-pin connector into the subharness 3-pin connector, and secure the 3-pin connectors to the vehicle clip.

43. Route the subharness as shown. Line up the green tape on the subharness to the vehicle clip, and secure the subharness to the vehicle harness with one wire tie.



44. With the help of an assistant, bring the rear bumper close to the vehicle, and plug the subharness 3-pin connector into the hands-free access unit. Install the rear bumper.

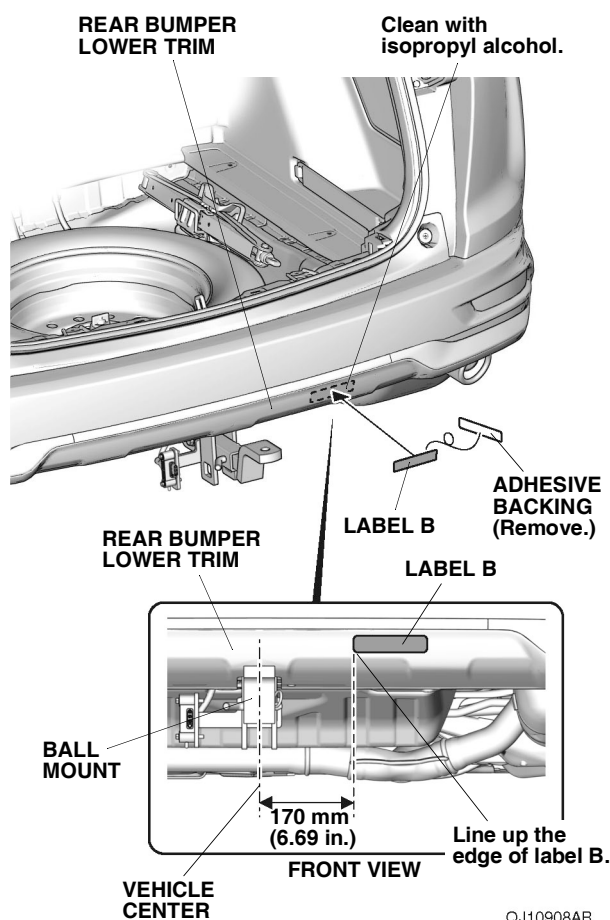
## SUBHARNESS 3-PIN CONNECTOR



If the vehicle is equipped with the accessory trailer hitch, continue with step 45; otherwise, go to step 47.

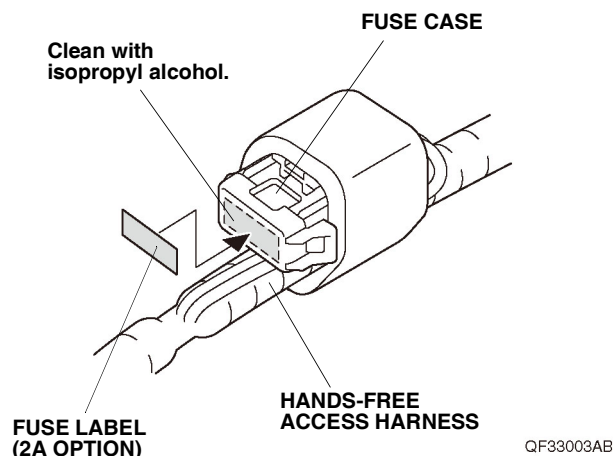
## With accessory trailer hitch

45. Using isopropyl alcohol on a shop towel, thoroughly clean the rear bumper lower trim where the label B will attach.

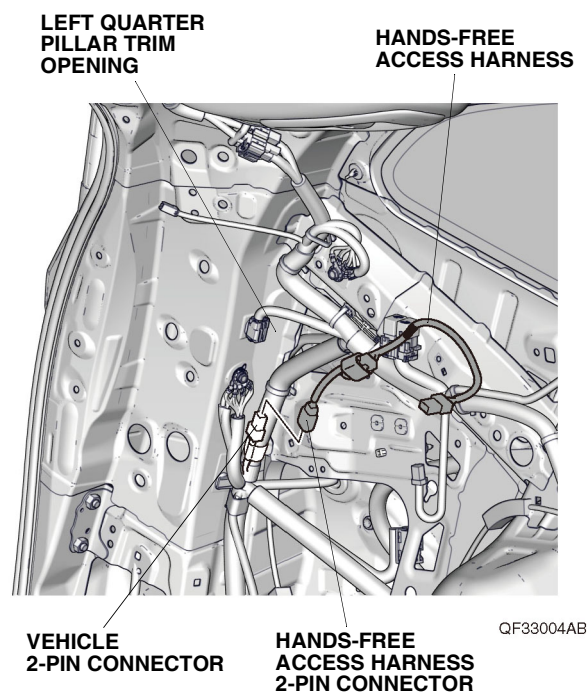


46. Remove the adhesive backing from the label B, and attach the label B to the rear bumper lower trim at the measurement shown.  
NOTE: Make sure the customer is aware the label B can be removed after reading.

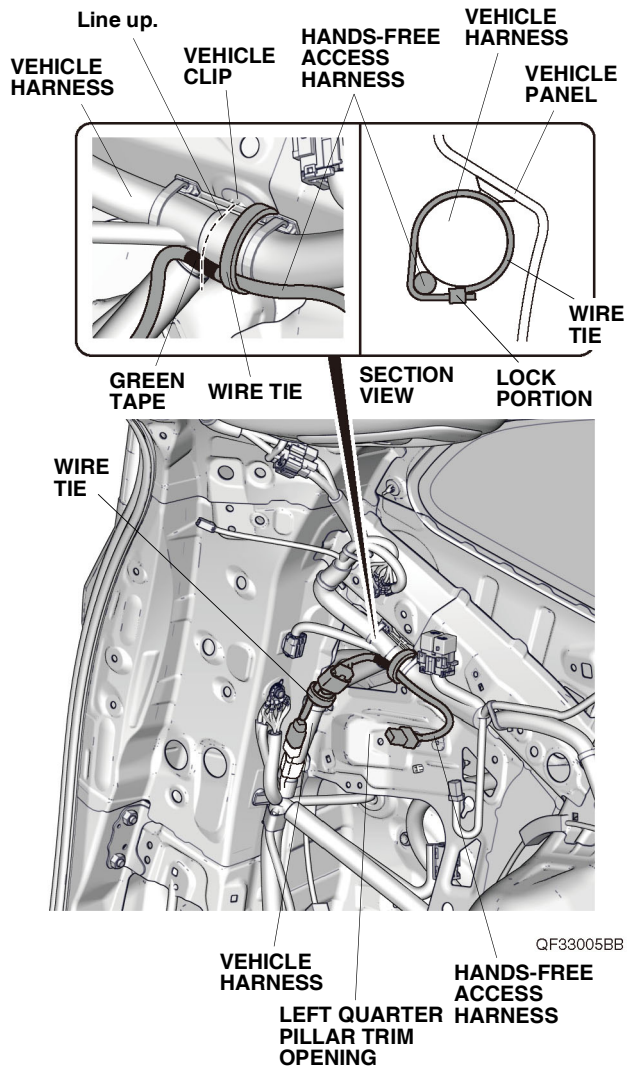
47. Using isopropyl alcohol on a shop towel, thoroughly clean the fuse case where the fuse label will attach. Attach the fuse label (2A OPTION) to the fuse case on the hands-free access harness.



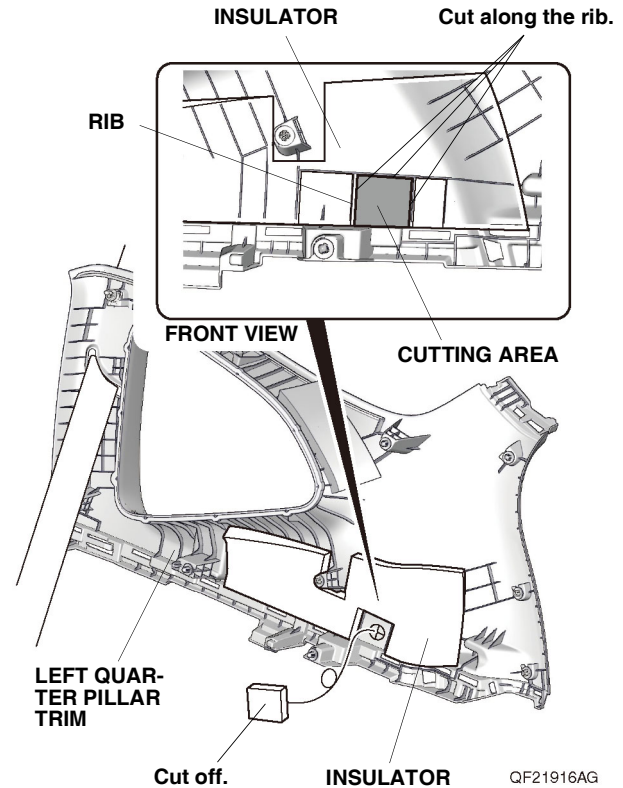
48. Plug the vehicle 2-pin connector into the hands-free access harness 2-pin connector.



49. Line up the green tape on the hands-free access harness to the vehicle clip, and secure the hands-free access harness to the vehicle harness with one wire tie.



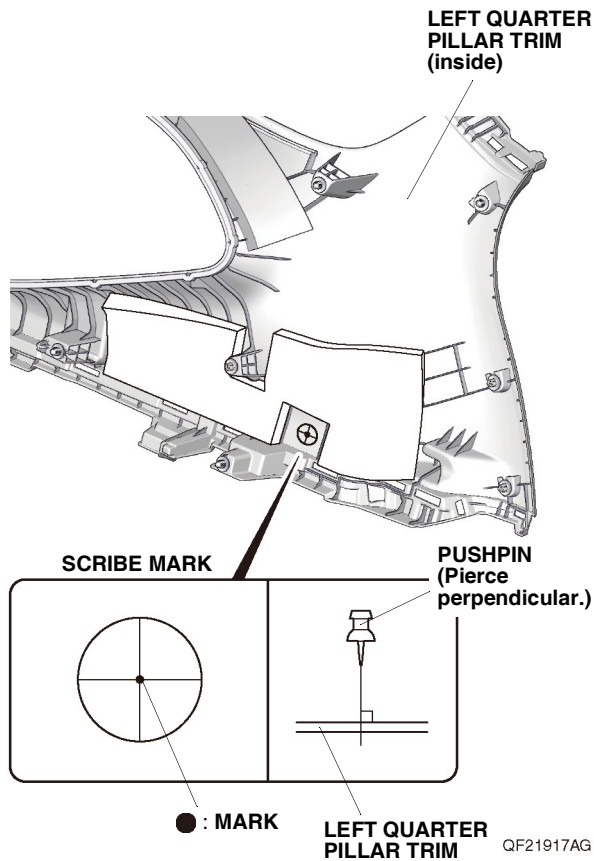
51. Using a utility knife, cut off the insulator as shown.



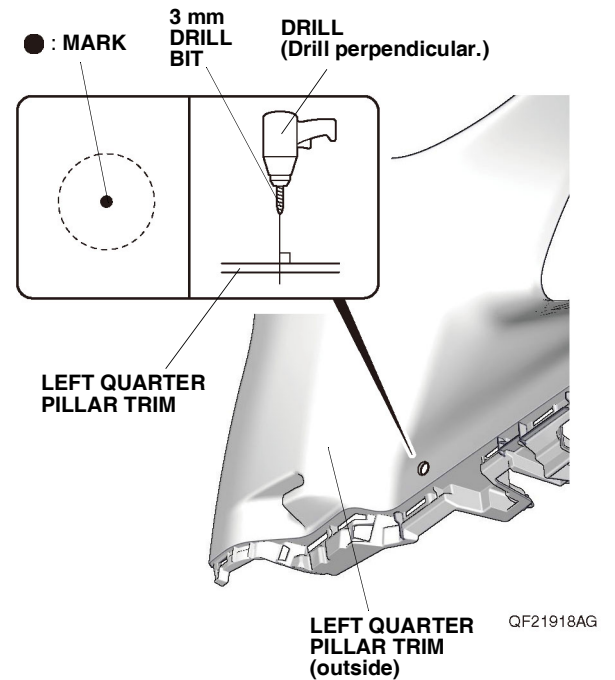
50. Secure the hands-free access harness to the vehicle harness with one wire tie.



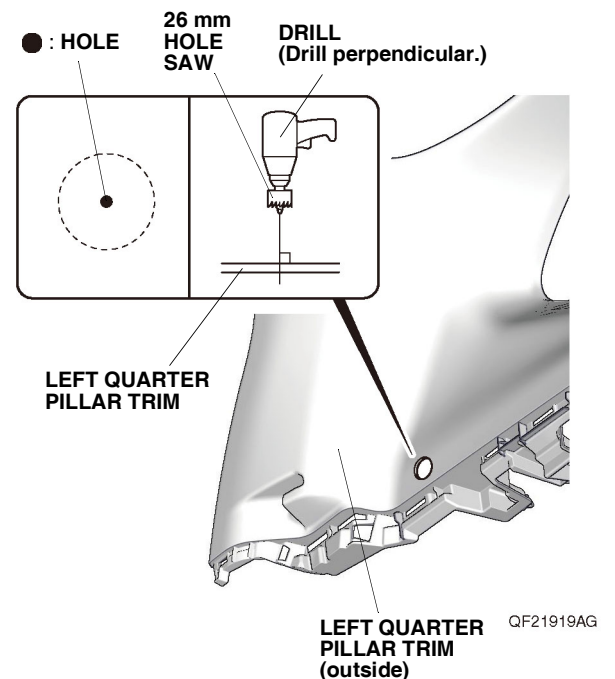
52. Using a pushpin, pierce the center of the scribe mark on the left quarter pillar trim.  
**NOTE:** Make sure to pierce the mark perpendicular to the left quarter pillar trim.



53. While wearing eye protection, drill the pierced mark on the left quarter pillar trim with a 3 mm drill bit.  
**NOTE:** Make sure to drill perpendicular to the left quarter pillar trim.

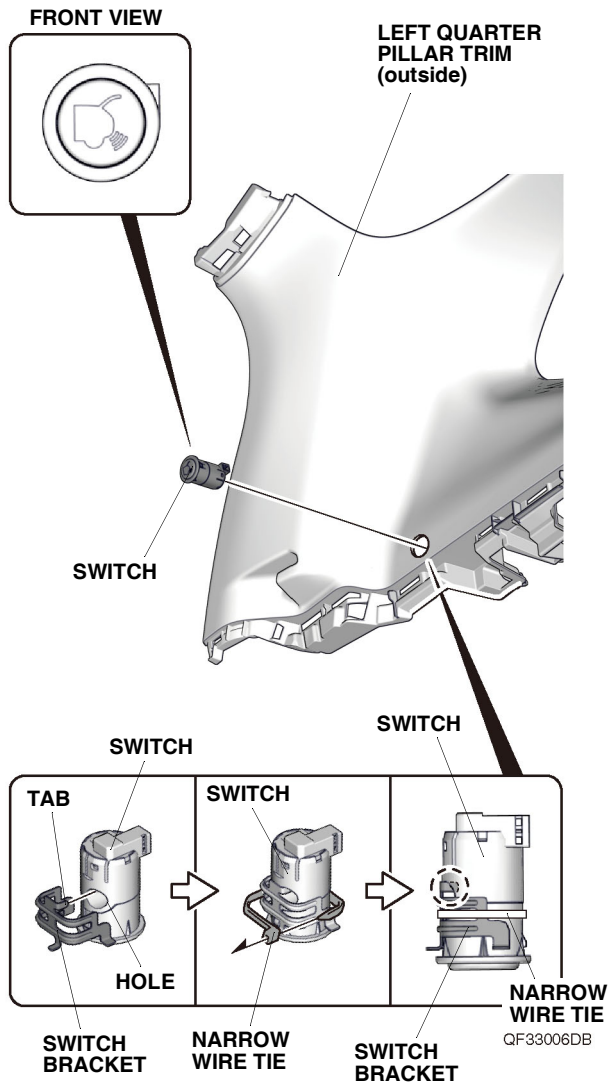


54. While wearing eye protection, enlarge the 3 mm hole to 26 mm using a 26 mm hole saw.  
**NOTE:** Make sure to drill perpendicular to the left quarter pillar trim.



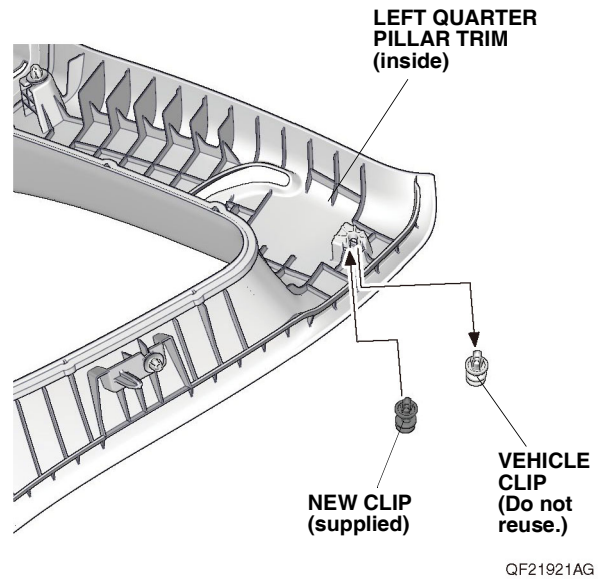


55. Install the switch into the 26 mm hole in the left quarter pillar trim.  
NOTE: Make sure to install the switch in the correct orientation.

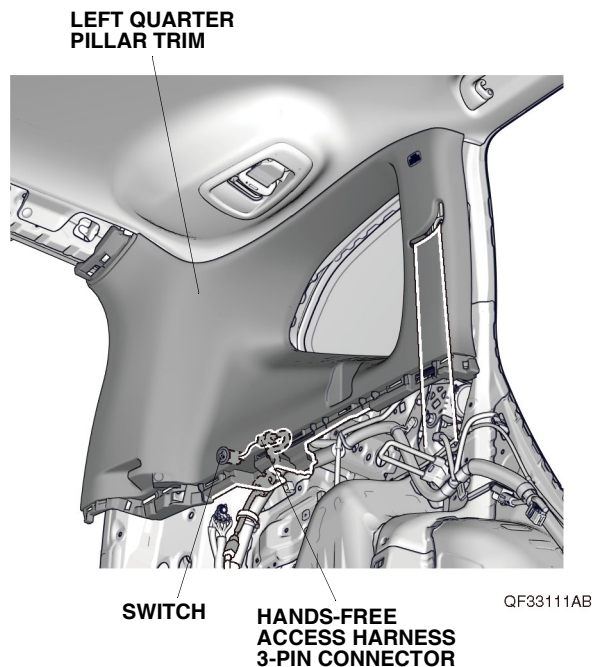


56. Line up the tab on the switch bracket with the hole on the switch, and secure the switch bracket to the switch with one narrow wire tie.  
NOTE: Firmly press the switch bracket against the left quarter pillar trim, and make sure that there is no clearance between the switch and left quarter pillar trim.

57. Remove the vehicle clip and install the new clip to the left quarter pillar trim.

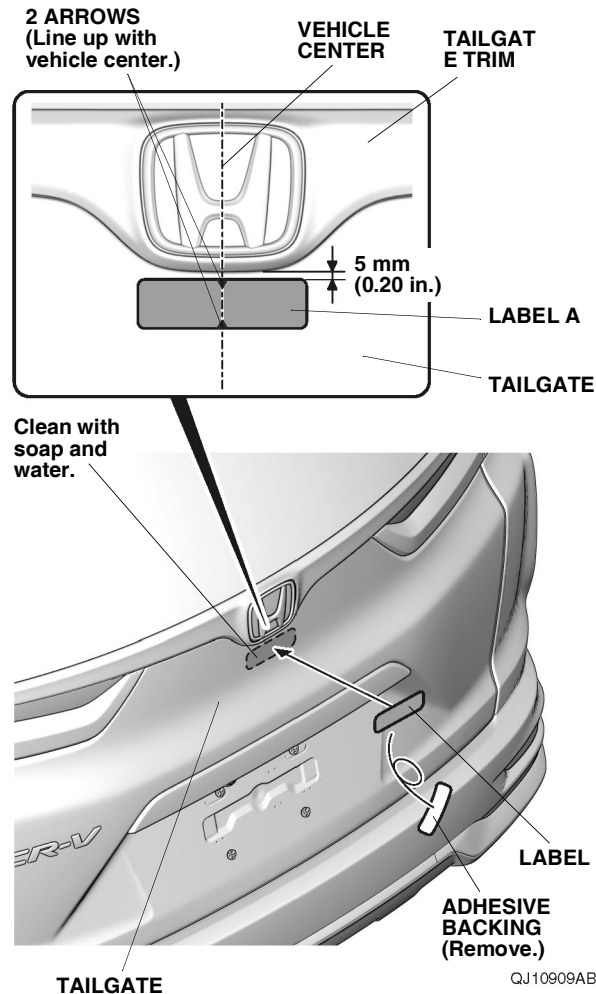


58. With the left quarter pillar trim in position, plug the hands-free access harness 3-pin connector into the switch.



59. Check the overlap between the headliner and the left quarter pillar trim.  
NOTE: Check and adjust the overlap as described in the service information.
60. Install the left quarter pillar trim.  
NOTE:
- Make sure the side curtain airbag is not tucked under the clip.
  - Do not push the left quarter pillar trim excessively.
61. Check that all wire harnesses are routed properly and all connectors are plugged in.
62. Install all removed parts.
63. Connect the negative cable to the battery.
64. Press and hold the audio unit power button for 2 seconds to restore the audio and navi (if equipped) system functions.
65. Set the clock on vehicles without navigation.
66. If necessary, restore the systems back to normal operation as described in the service information.

67. Using a clean shop towel with soap and water, thoroughly clean the tailgate where the label A will attach. Then, dry the area with a clean towel.



68. Remove the adhesive backing from the label A. Using the arrows on the label A, center it 5 mm (0.20 in.) below the tailgate trim and attach it to the tailgate.  
NOTE: Make sure the customer is aware the label A can be removed after reading.

## Check the Operation of the Hands-Free Access Power Tailgate

69. Make sure that the hands-free access power tailgate works as described in the Accessory User's Information Manual supplied with the hands-free access power tailgate unit kit.