



HONDA INSTALLATION INSTRUCTIONS

Accessory
PARKING SENSORS

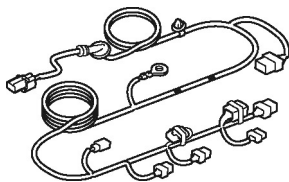
Application
**2021 CR-V
2021 CR-V HYBRID**

Publications No.
VERSION 1
Issue Date
OCT 2020

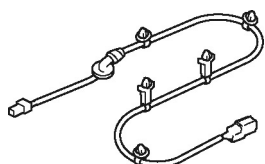
PARTS LIST

**Parking Sensors Attachment Kit
P/N 08V67-TLA-100B**

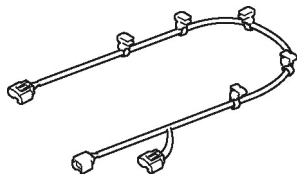
Parking sensor harness



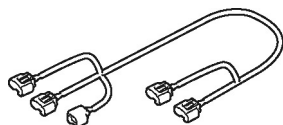
Subharness



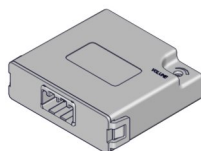
Front bumper harness



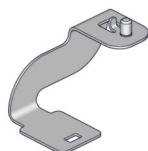
Rear bumper harness



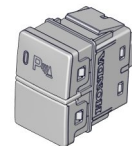
Control unit



Control unit bracket



Parking sensor switch



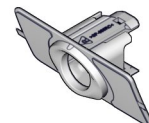
2 Retainers A
(Identification mark: 0DEG 0.8)



2 Retainers B
(Identification mark: 0DEG 0.4)



Retainer C
(Identification mark: R)



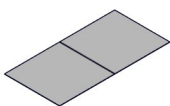
Retainer D
(Identification mark: L)



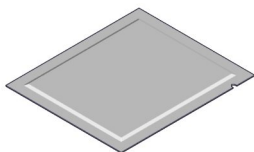
6 Rubber spacers



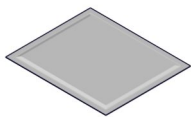
14 Aluminum tapes



3 Primers



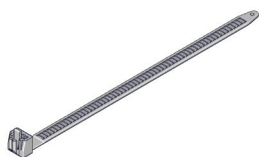
2 Alcohol wipes



Fuse label



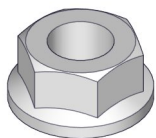
17 Wire ties



3 Wire ties with clip



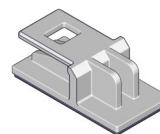
Flange nut



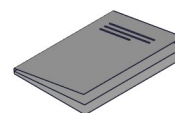
Clip



2 Connector holders

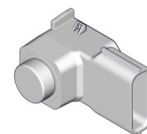


Accessory user's information manual



Sensors Kit
P/N 08V67-TVA-100K

6 Sensors



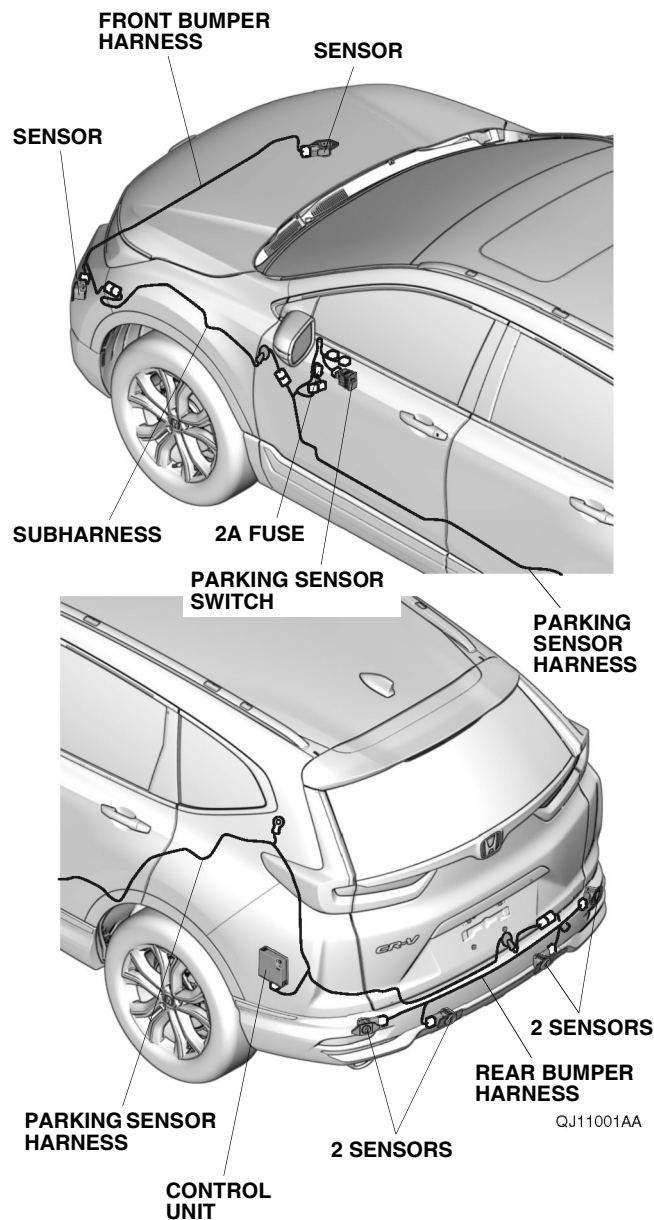
TOOLS AND SUPPLIES REQUIRED

Phillips screwdriver
Small flat-tip screwdriver
10 mm, 12 mm, 13 mm, and 17 mm Open end wrenches
10 mm Socket
Pushpin
Ratchet
3 mm, 6 mm, 8.5 mm, and 10 mm Drill bits
Eye protection (face shield, safety goggles, etc.)
File
Masking tape
5 mm Hex wrench
Blanket
Isopropyl alcohol
Shop towel
Felt-tip pen
Drill
Diagonal cutters
Utility knife
Rubber mallet
Scissors
Plate
Tape measure

The following tools are available through the Honda Tool and Equipment Program. On the iN, click on Service > Service Bay > Tool and Equipment Program, then enter the number under "Search." Or, call 888-424-6857.

- Trim Tool Set (T/N SOJATP2014)
- Plastic Trim Tool (T/N SILTRIMTL10)
- 16 mm Punch Tool (T/N 07AAH-TZ5A100)
- 28 mm Punch Tool (T/N 07AAH-TLAA100)

Illustration of the Parking Sensors on the Vehicle



INSTALLATION

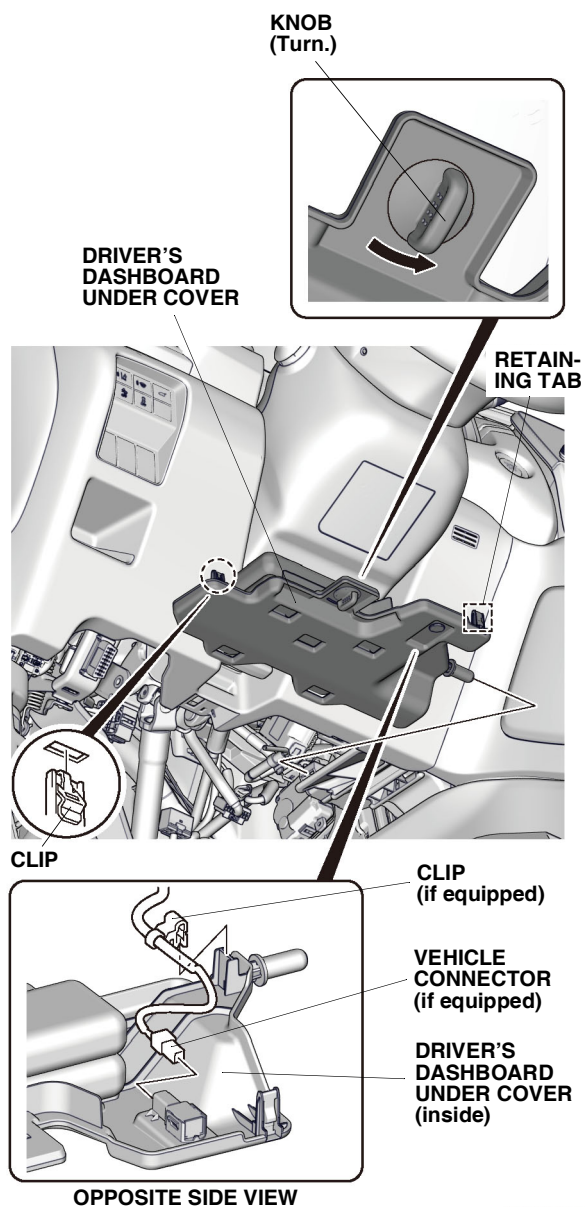
Customer Information: The information in this installation instruction is intended for use only by skilled technicians who have the proper tools, equipment, and training to correctly and safely add equipment to your vehicle. These procedures should not be attempted by "do-it-yourselfers."

1. Disconnect the negative cable from the battery, then wait at least 3 minutes before starting work.

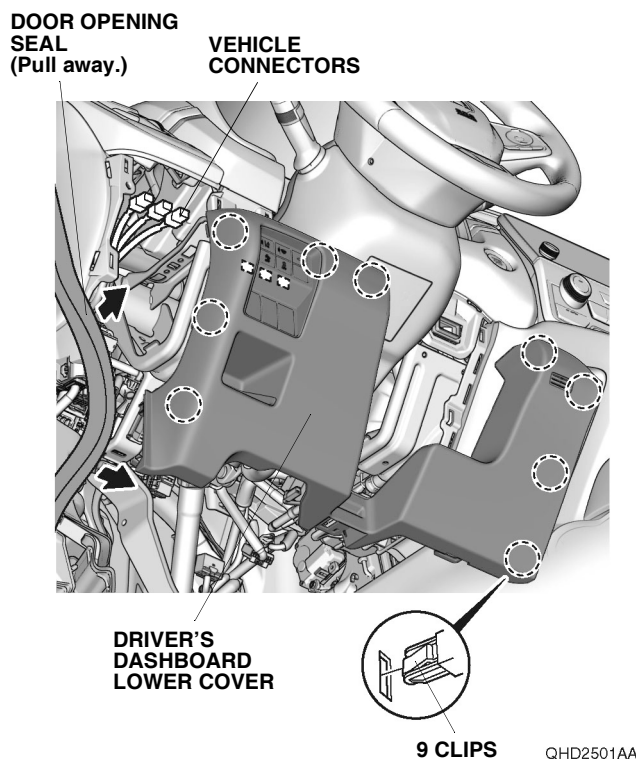
If the vehicle is equipped with driver's dashboard under cover, continue with step 2; otherwise, go to step 3.

With driver's dashboard under cover

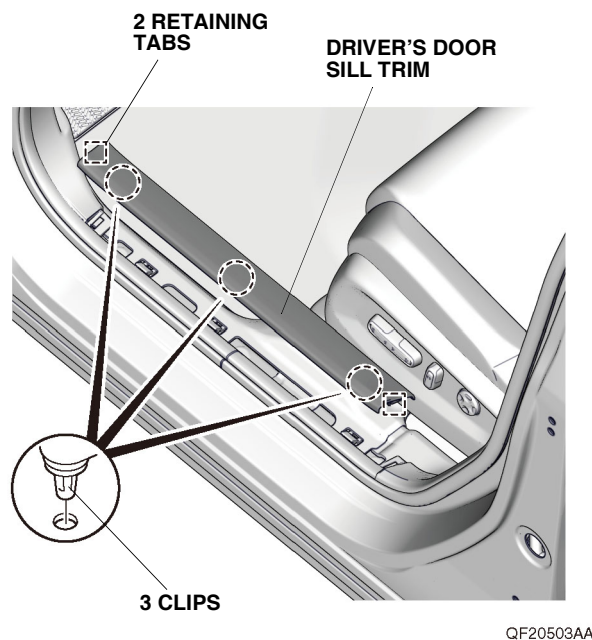
- Remove the driver's dashboard under cover, and unplug the vehicle connector (if equipped).



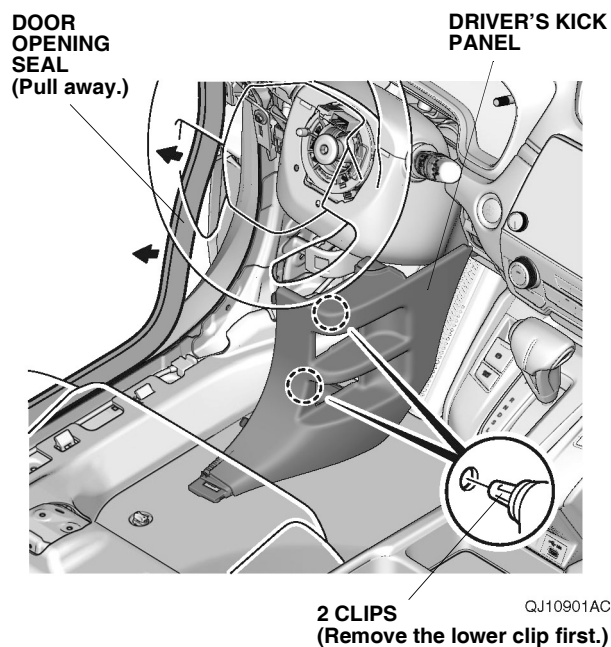
- Pull away the door opening seal. Remove the driver's dashboard lower cover, and unplug the vehicle connectors.



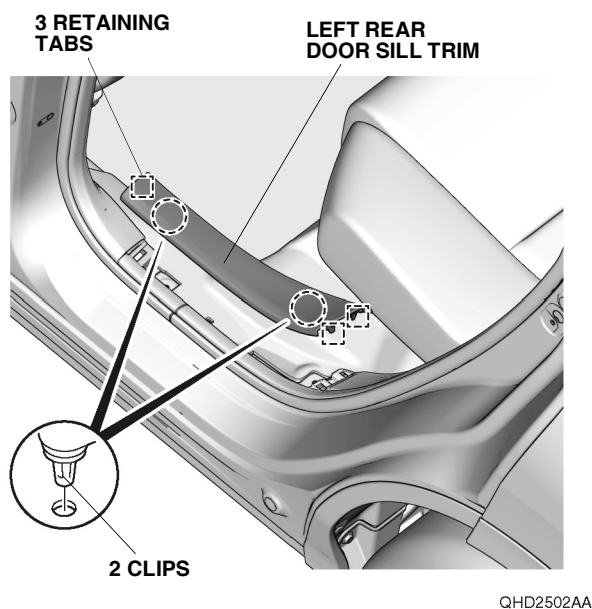
- Remove the driver's door sill trim.



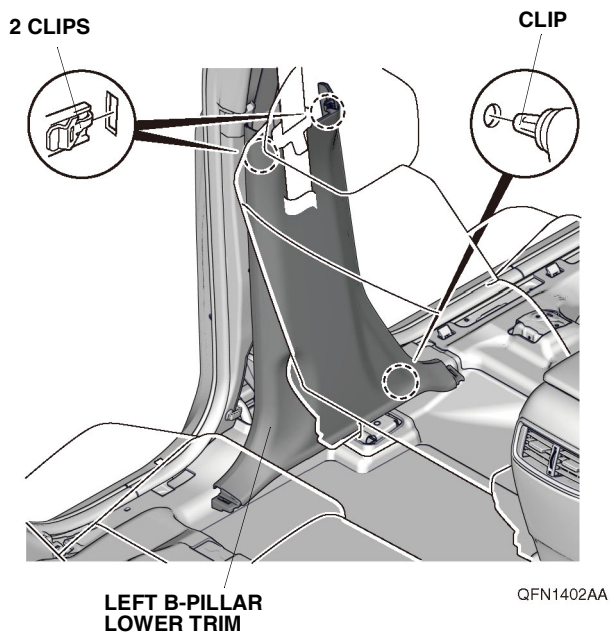
- Pull away the door opening seal, and remove the driver's kick panel.



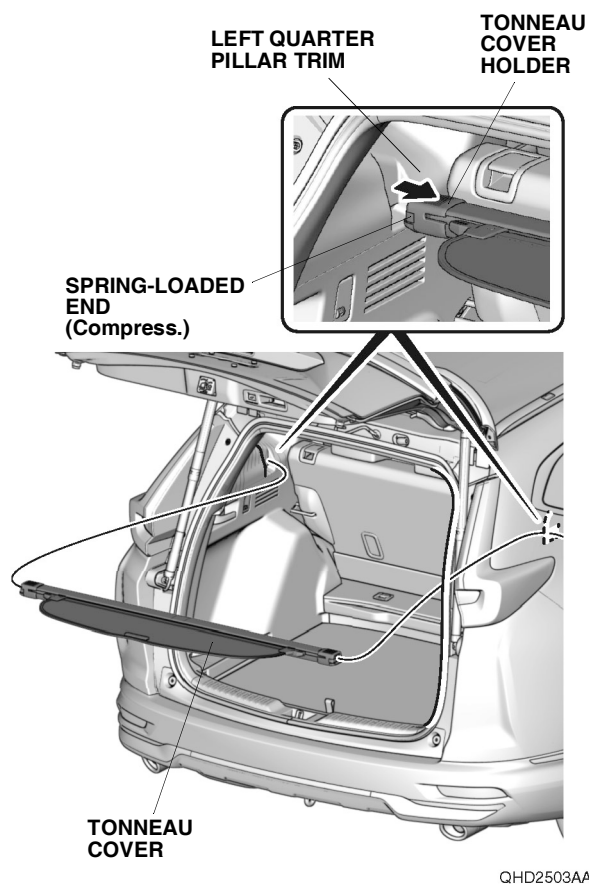
- Remove the left rear door sill trim.



- Remove the left B-pillar lower trim.

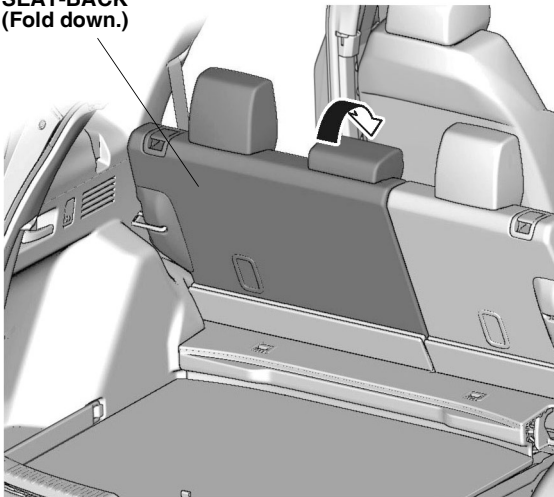


- If equipped, remove the tonneau cover.



9. Fold down the left rear seat-back.

LEFT REAR SEAT-BACK
(Fold down.)

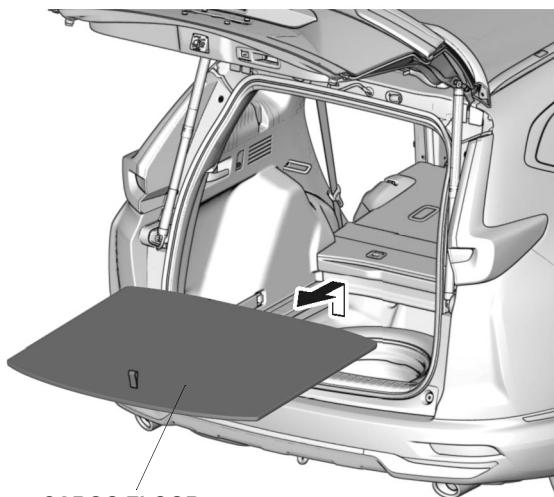


QHD2504AA

If the vehicle is petrol models, continue with step 10;
if the vehicle is hybrid models, go to step 22.

Petrol models

10. Remove the cargo floor board.



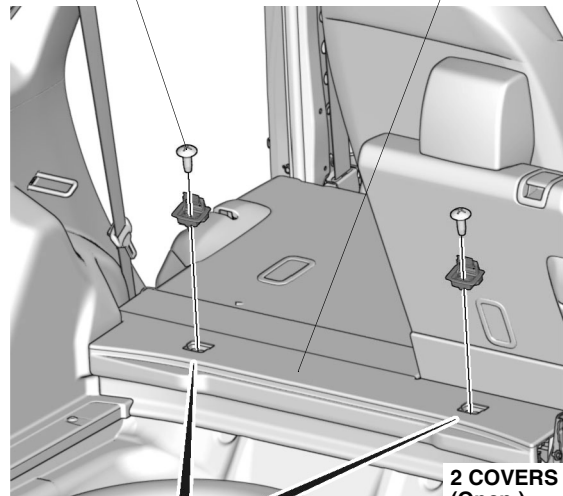
CARGO FLOOR BOARD

QHD2505AA

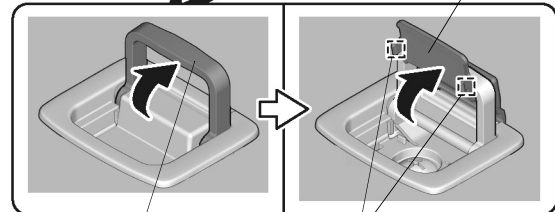
11. Remove the two tie-down hooks.

2 SELF-TAPPING SCREWS

CARGO FLOOR LID



2 COVERS
(Open.)



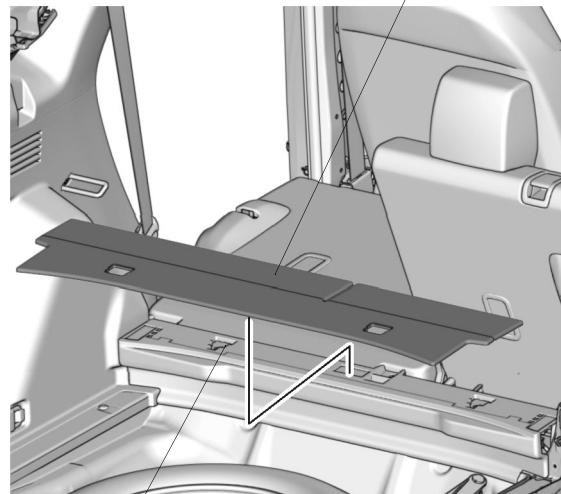
2 TIE-DOWN HOOKS

4 RETAINING TABS

QHD2506AA

12. Remove the cargo floor lid.

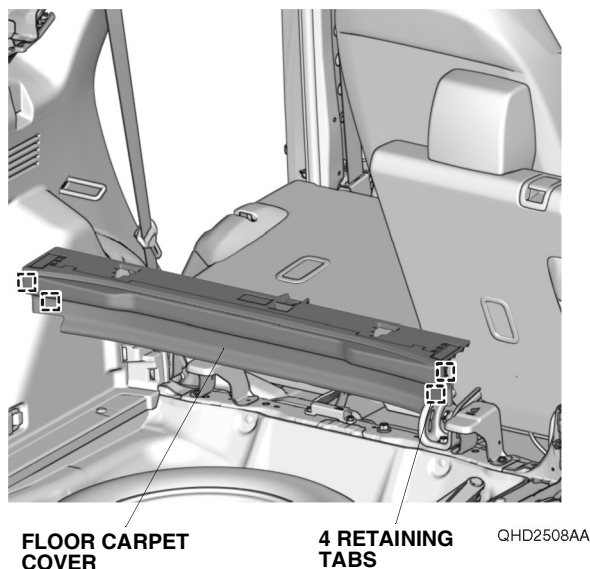
CARGO FLOOR LID



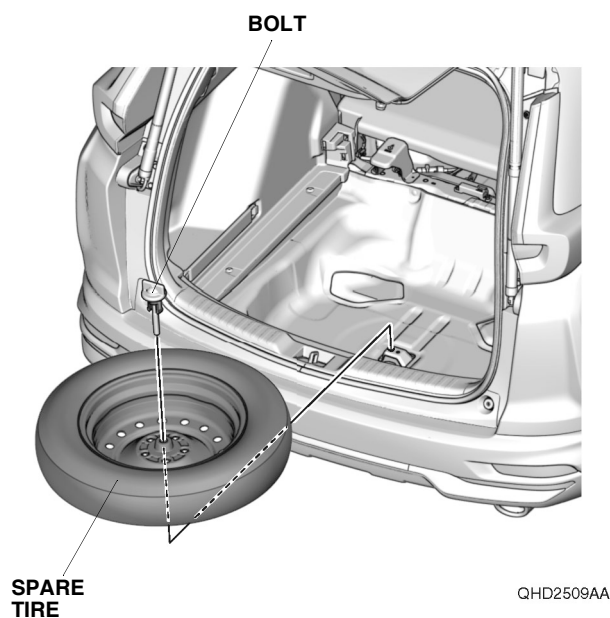
FLOOR CARPET COVER

QHD2507AA

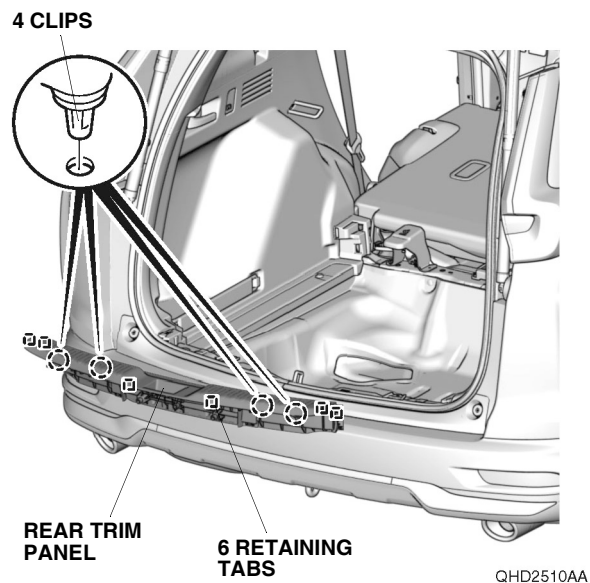
13. Remove the floor carpet cover.



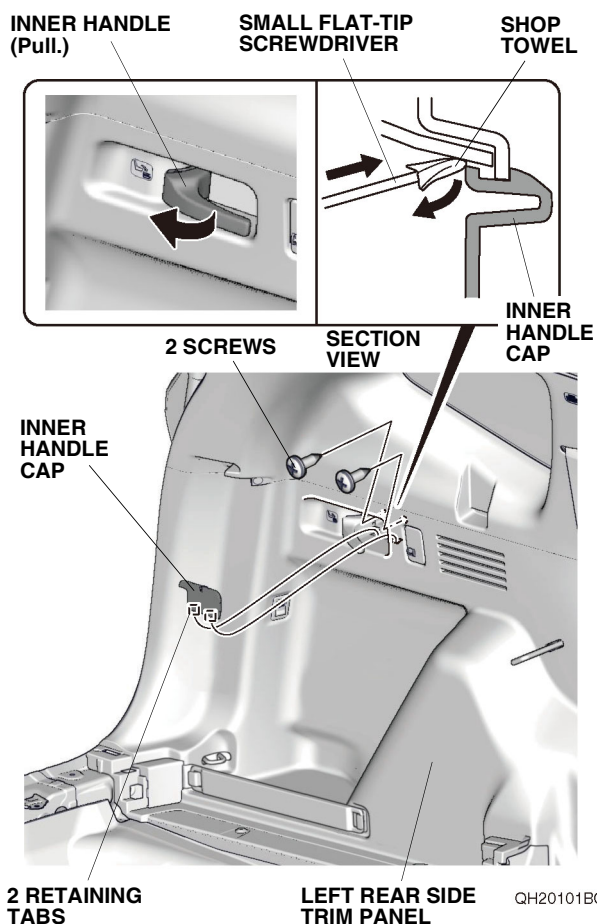
14. Remove the spare tire.



15. Remove the rear trim panel.

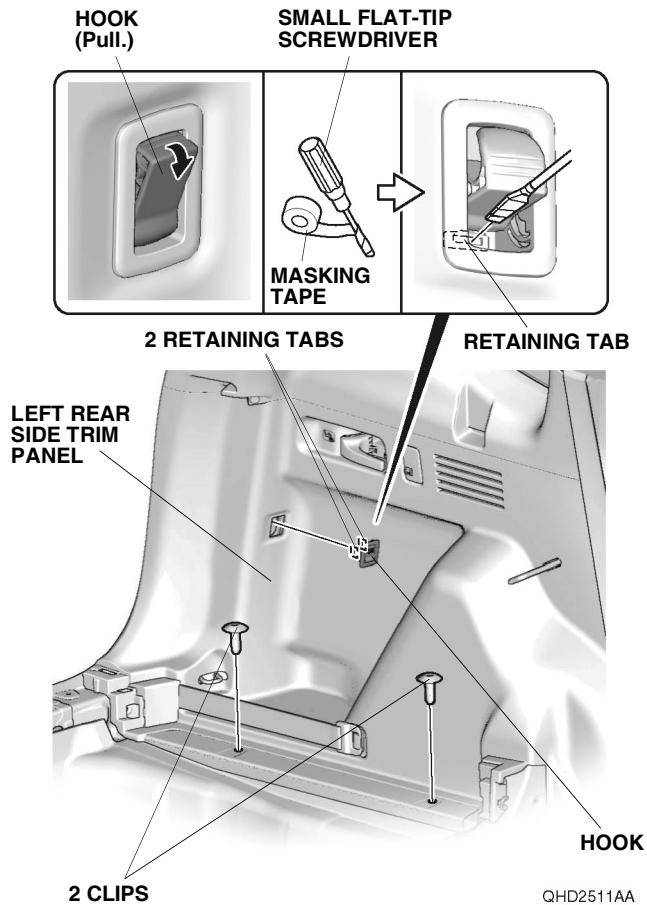


16. Gently pull the inner handle on the left rear side trim panel, and use a small flat-tip screwdriver wrapped with a shop towel to remove the inner handle cap as shown.

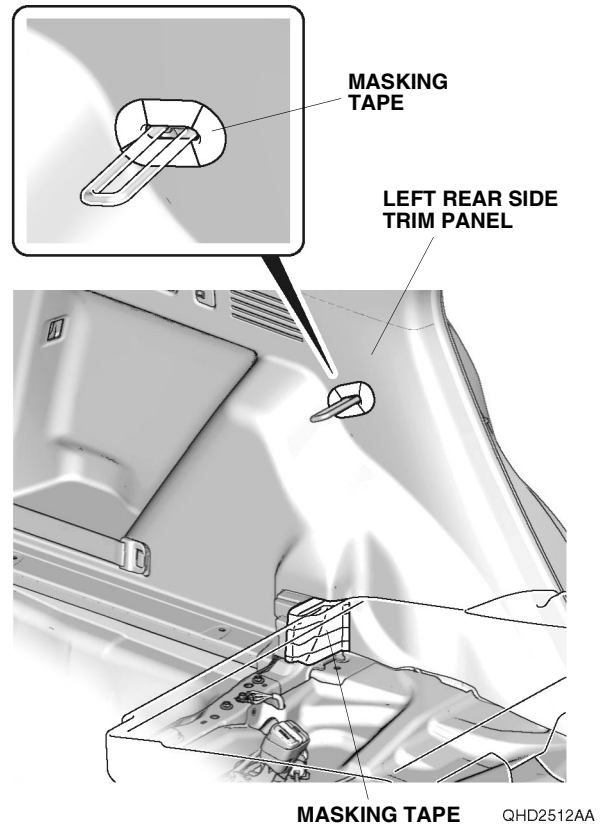


17. Remove the two screws from the left rear side trim panel.

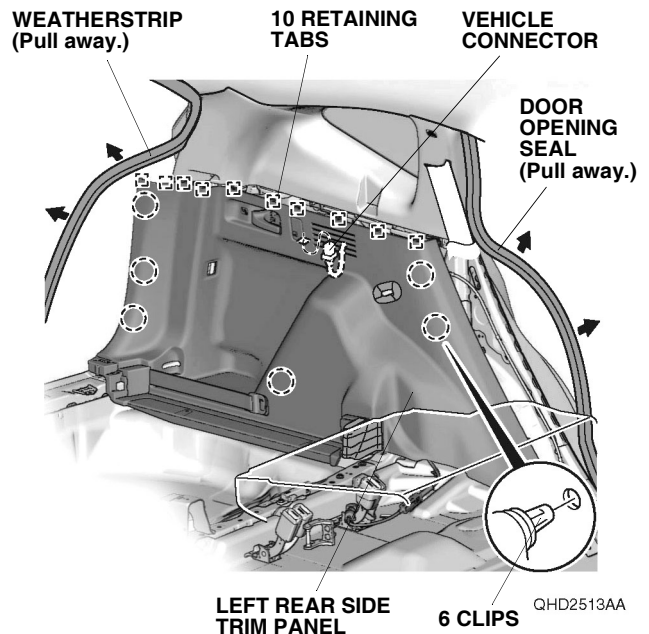
18. Gently pull the hook on the left rear side trim panel, and use a small flat-tip screwdriver wrapped with masking tape to remove the hook as shown. Then, remove the two clips from the left rear side trim panel.



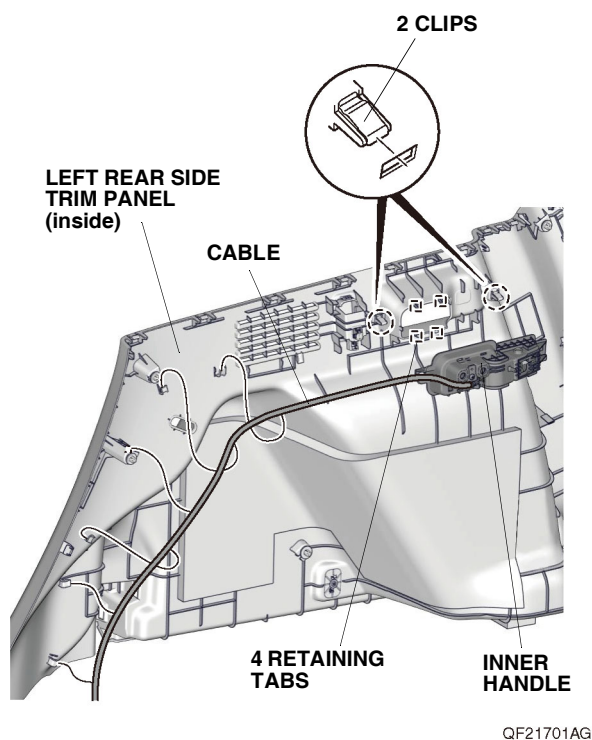
19. Apply masking tape to the left rear side trim panel as shown.



20. Pull away the door opening seal and weatherstrip from around the left rear side trim panel. Remove the left rear side trim panel, and unplug the vehicle connector.

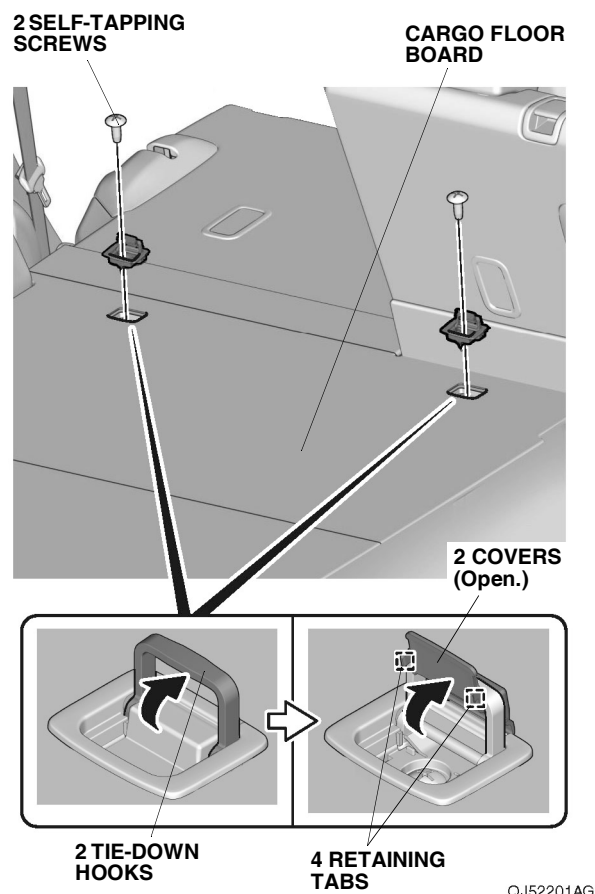


21. Release the cable from the left rear side trim panel, then remove the inner handle. Go to step 33.

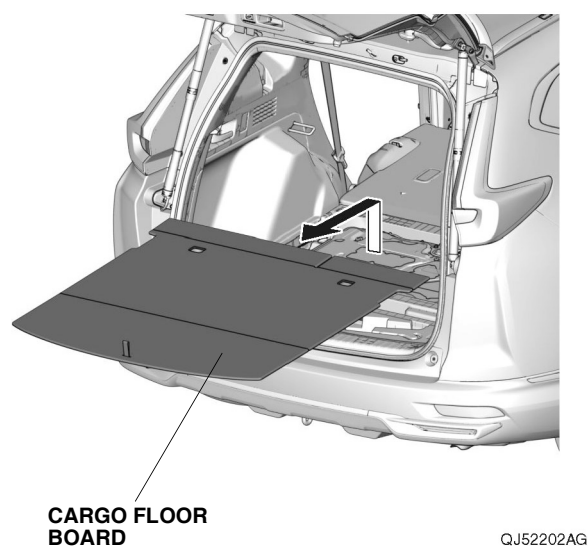


Hybrid models

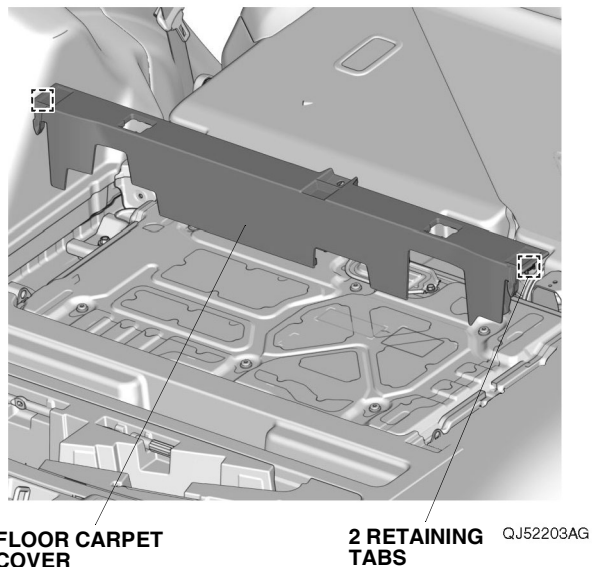
22. Remove the two tie-down hooks.



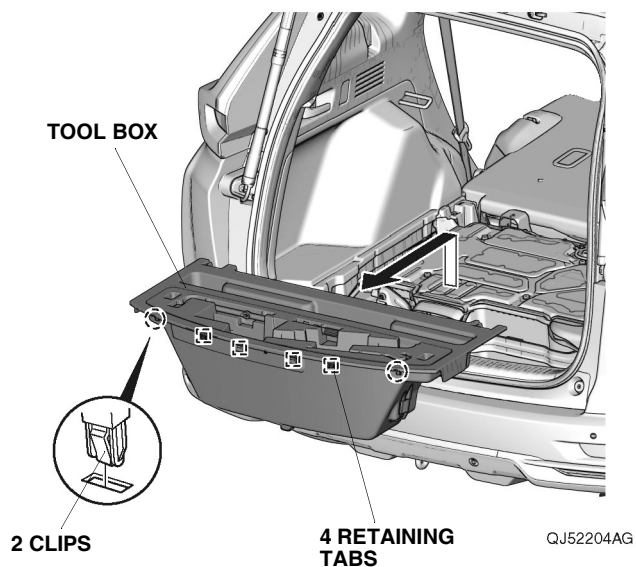
23. Remove the cargo floor board.



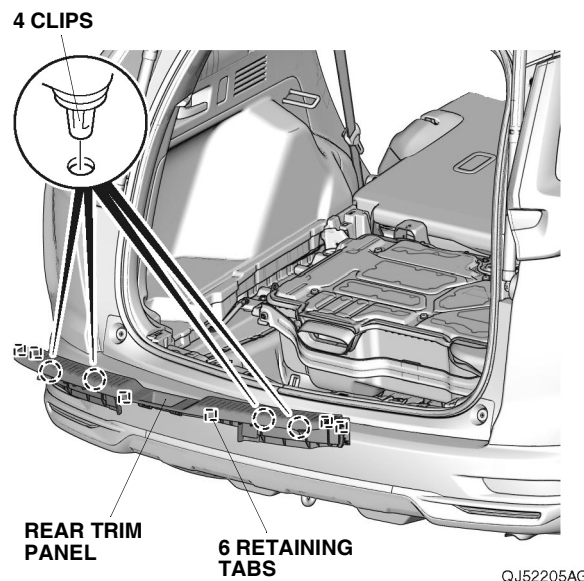
24. Remove the floor carpet cover.



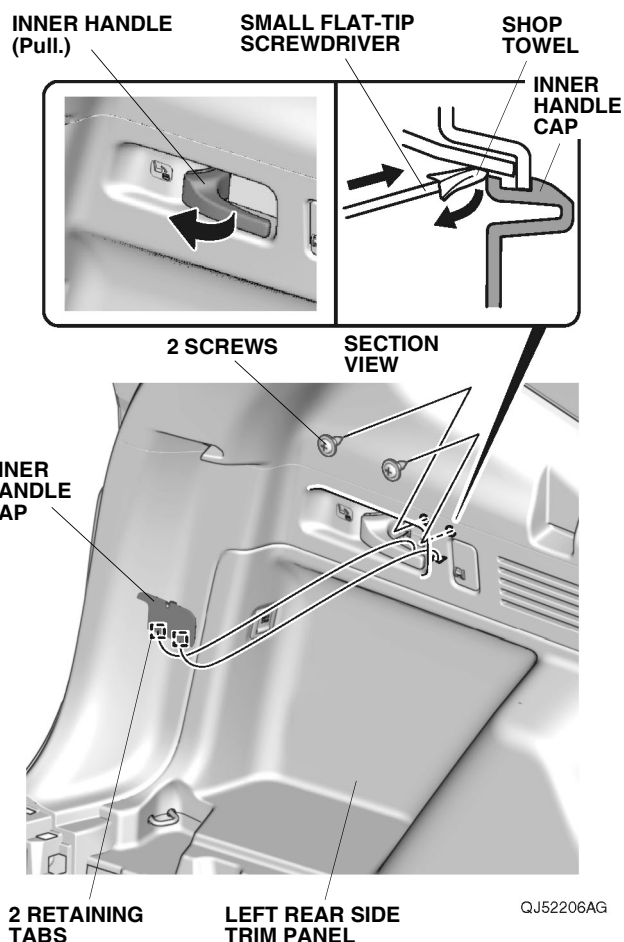
25. Remove the tool box.



26. Remove the rear trim panel.

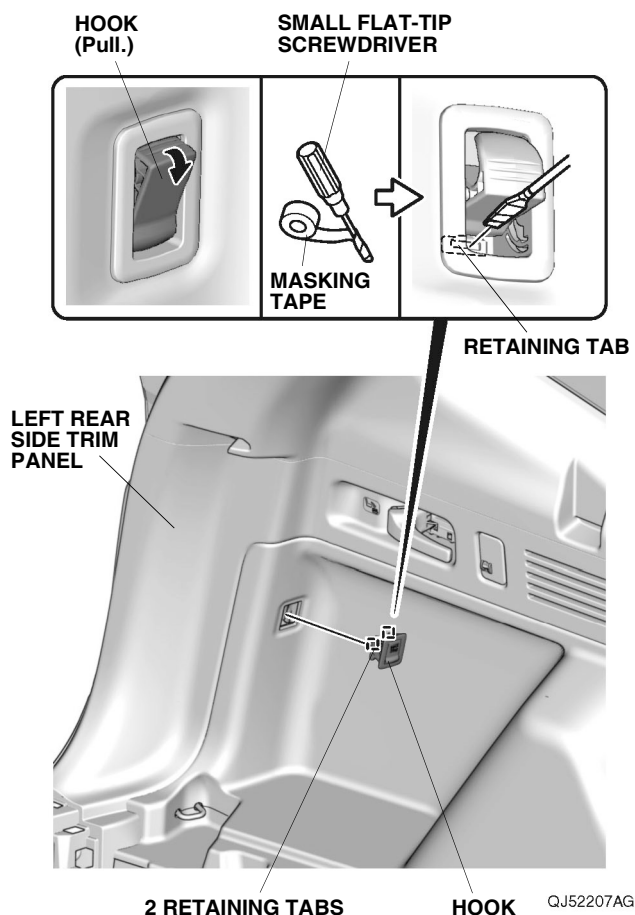


27. Gently pull the inner handle on the left rear side trim panel, and use a small flat-tip screwdriver wrapped with a shop towel to remove the inner handle cap as shown.

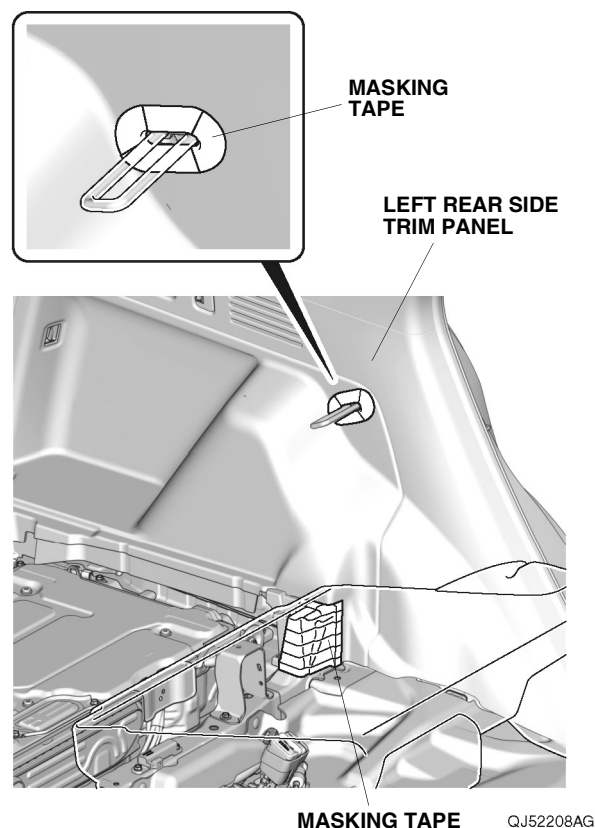


28. Remove the two screws from the left rear side trim panel.

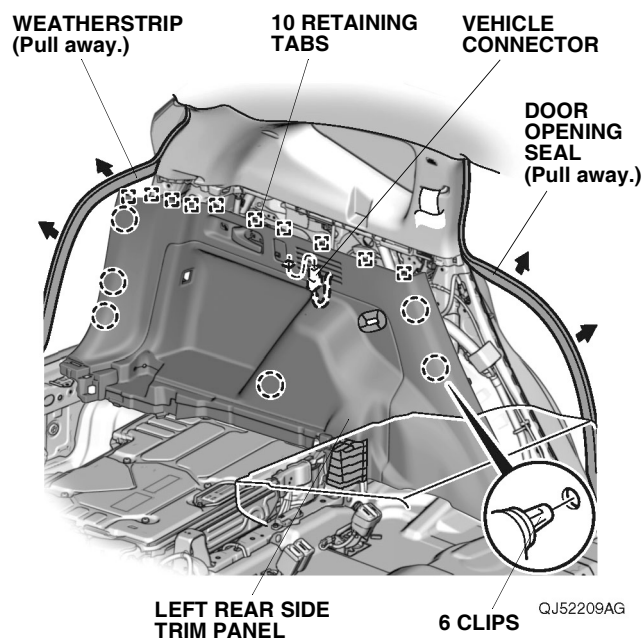
29. Gently pull the hook on the left rear side trim panel, and use a small flat-tip screwdriver wrapped with masking tape to remove the hook as shown.



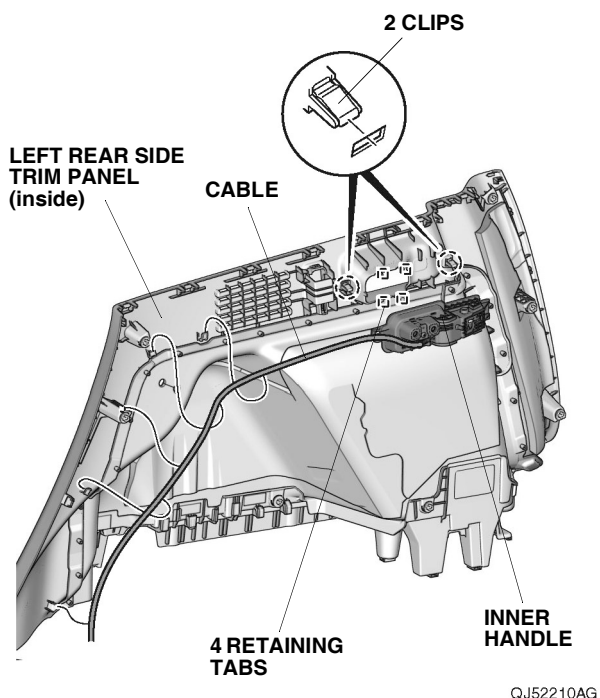
30. Apply masking tape to the left rear side trim panel as shown.



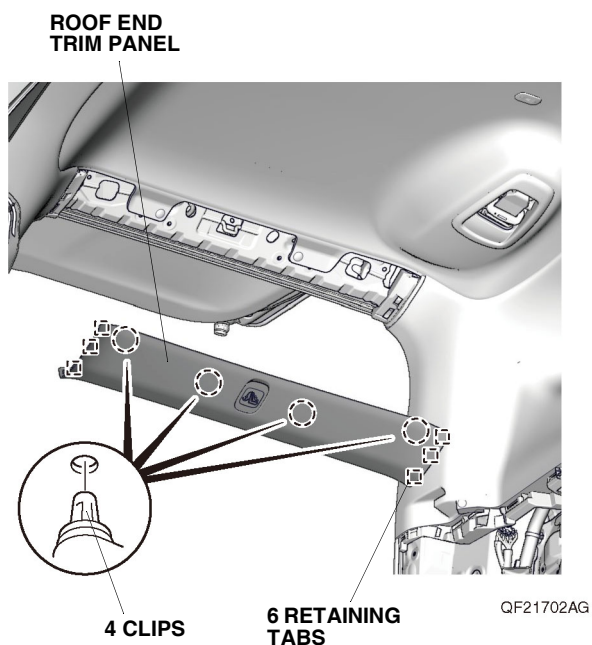
31. Pull away the door opening seal and weatherstrip from around the left rear side trim panel. Remove the left rear side trim panel, and unplug the vehicle connector.



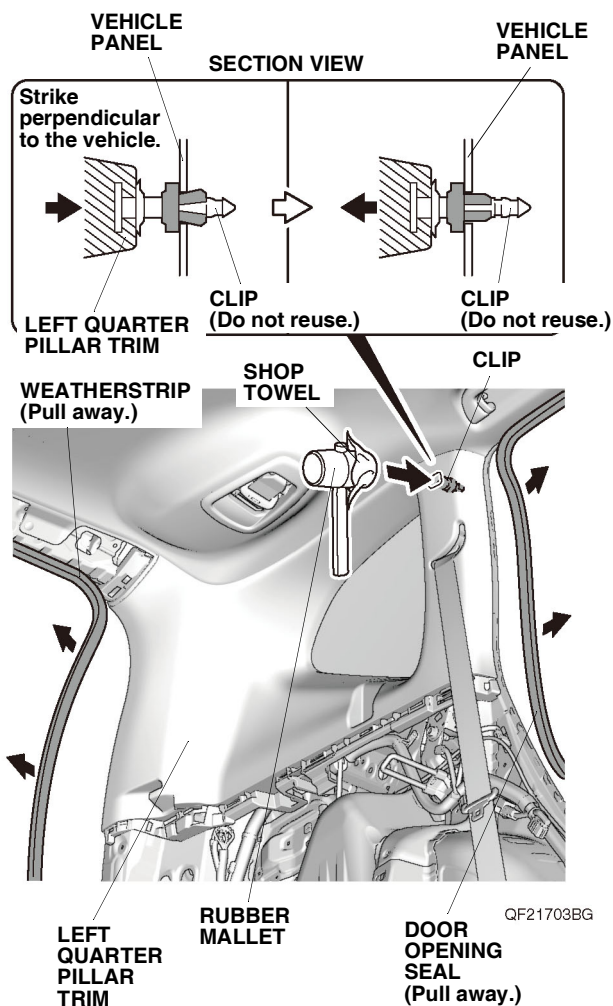
32. Release the cable from the left rear side trim panel, then remove the inner handle.



33. Remove the roof end trim panel.

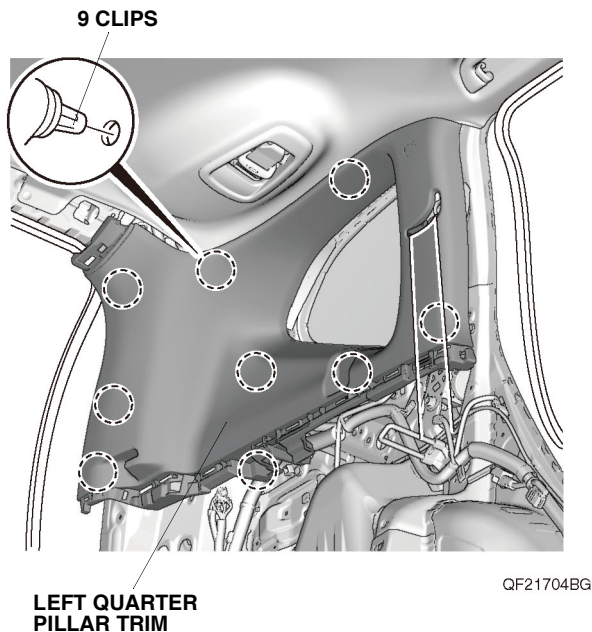


34. Pull away the door opening seal and weatherstrip from around the left quarter pillar trim.

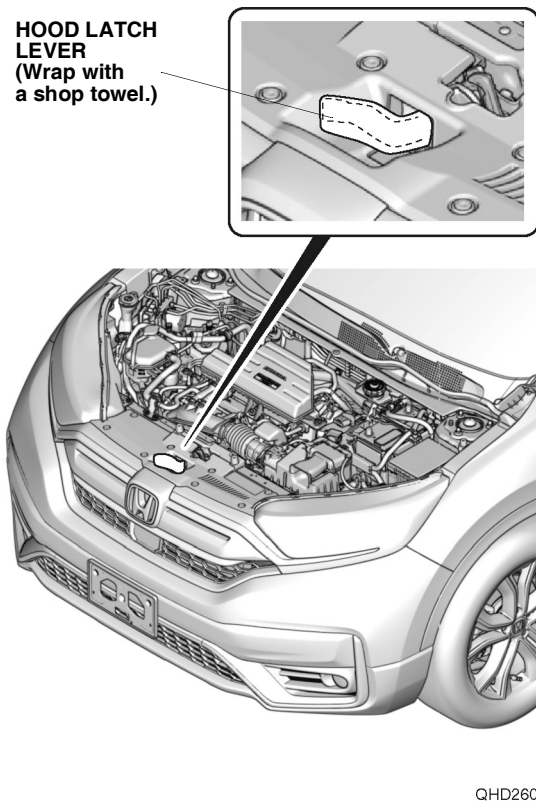


35. Using a rubber mallet wrapped with a shop towel, lightly tap the area marked **SIDE CURTAIN AIRBAG** on the left quarter pillar trim to push in the clip. Make sure to strike the area perpendicular to the vehicle.

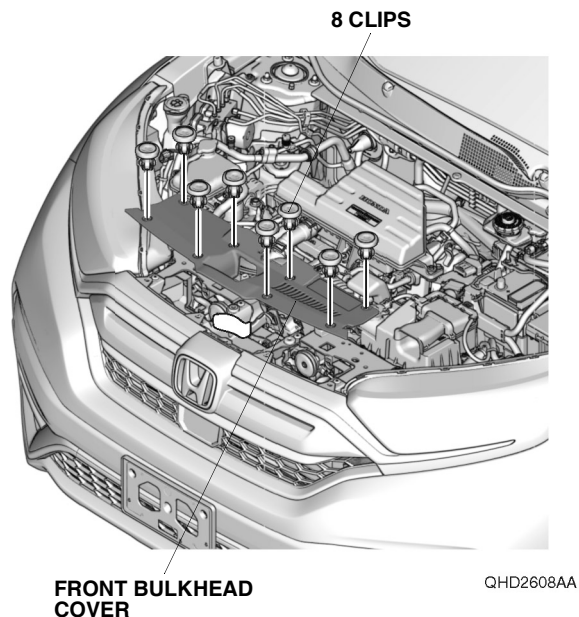
36. Remove the left quarter pillar trim.



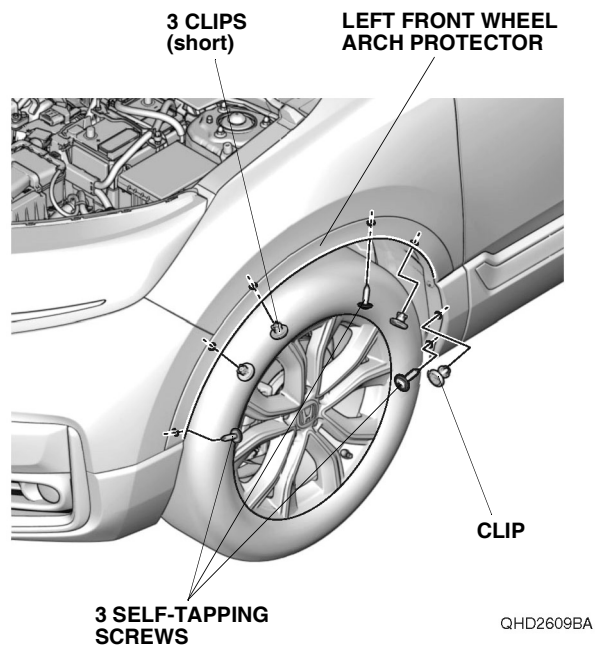
37. Wrap a shop towel around the hood latch lever.



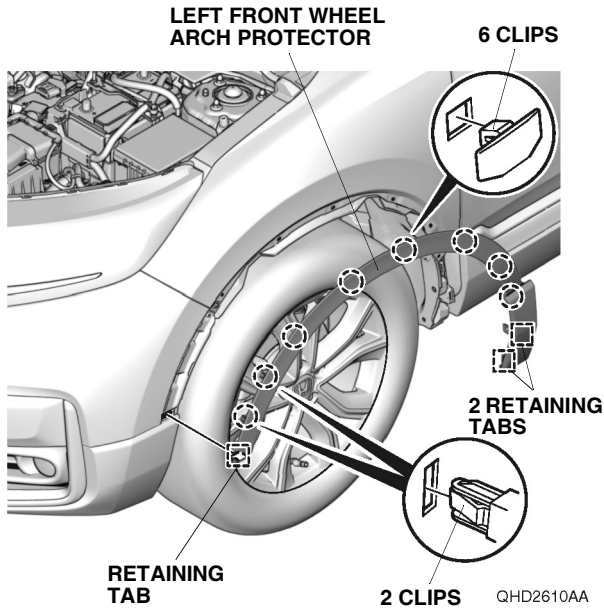
38. Remove the front bulkhead cover.



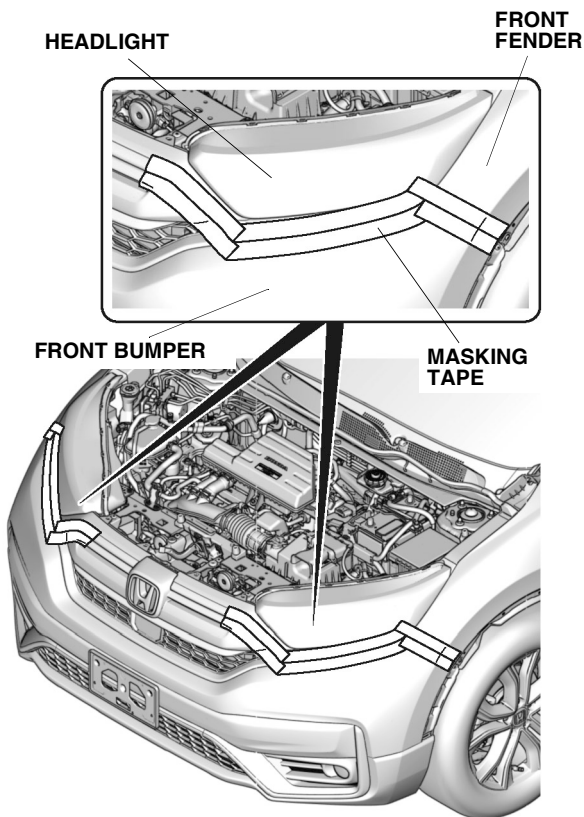
39. Remove the three self-tapping screws, one clip, and three clips (short) from the left front wheel arch protector as shown.



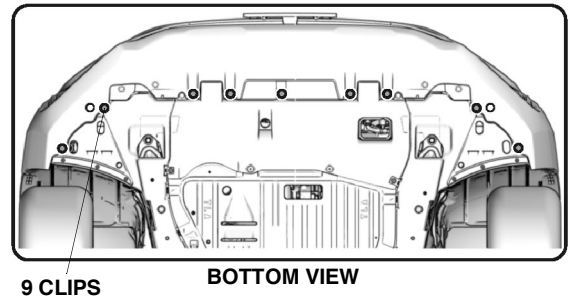
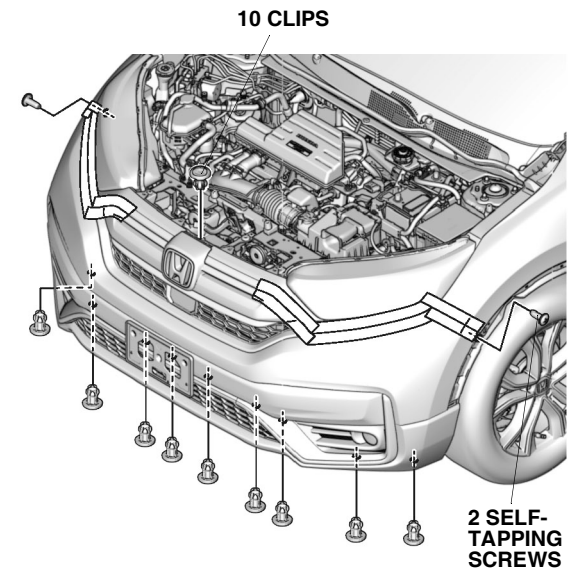
40. Remove the left front wheel arch protector as shown.



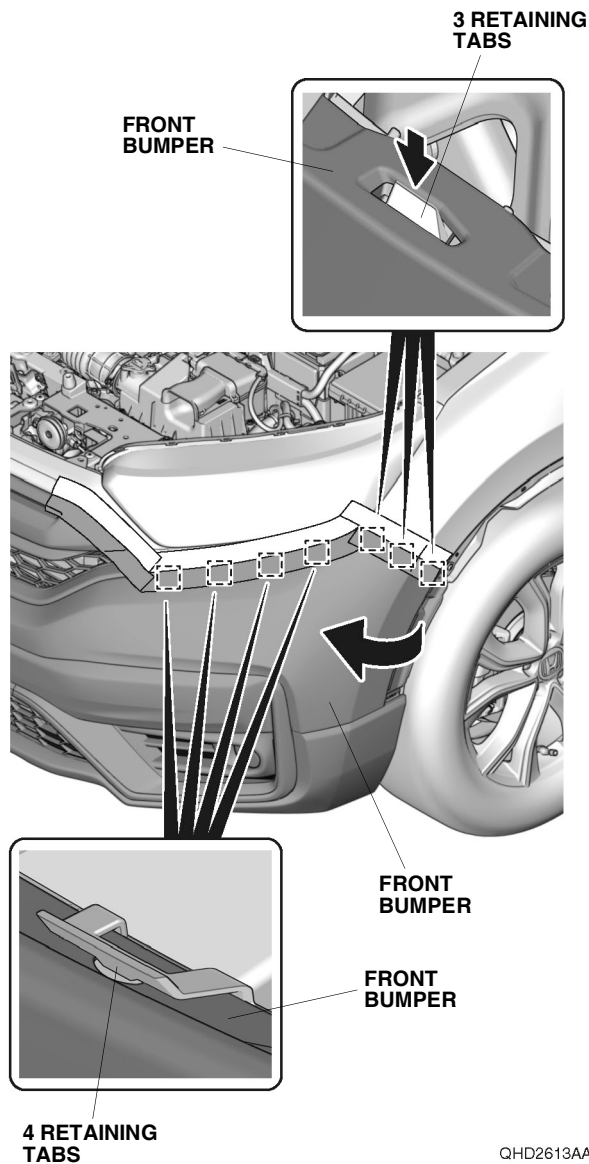
41. Repeat steps 39 and 40 on the right side of the vehicle.
42. Remove the front bumper:
- Apply masking tape on each side as shown.



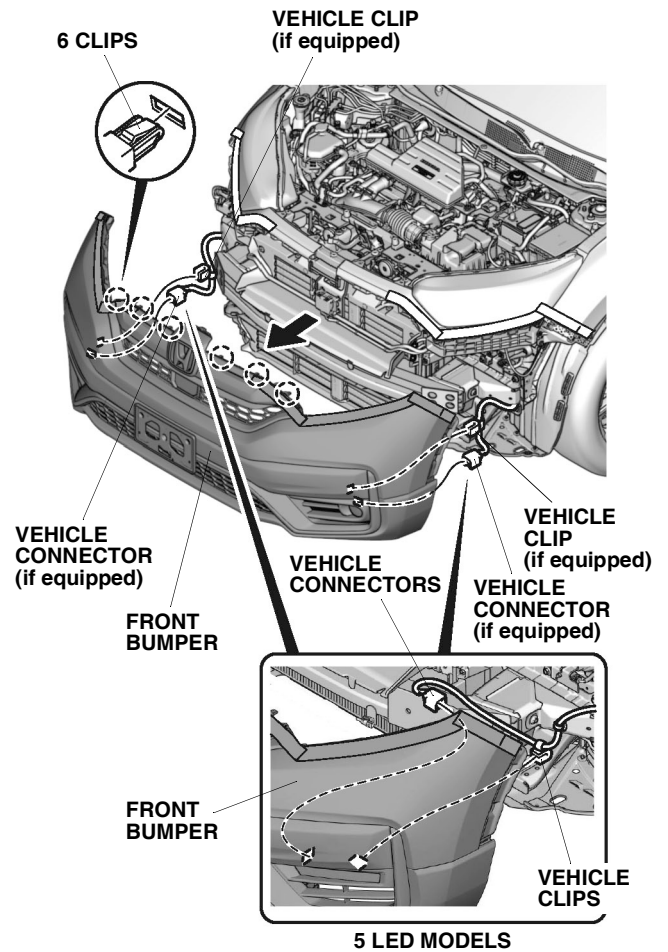
- Remove the two self-tapping screws and 10 clips as shown.



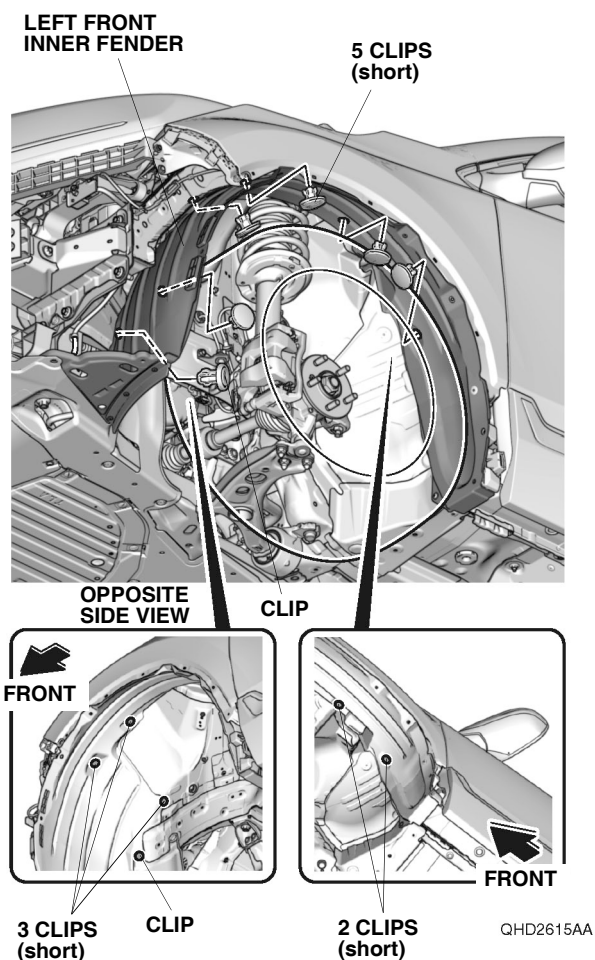
- With the help of an assistant, release the seven retaining tabs on each side.



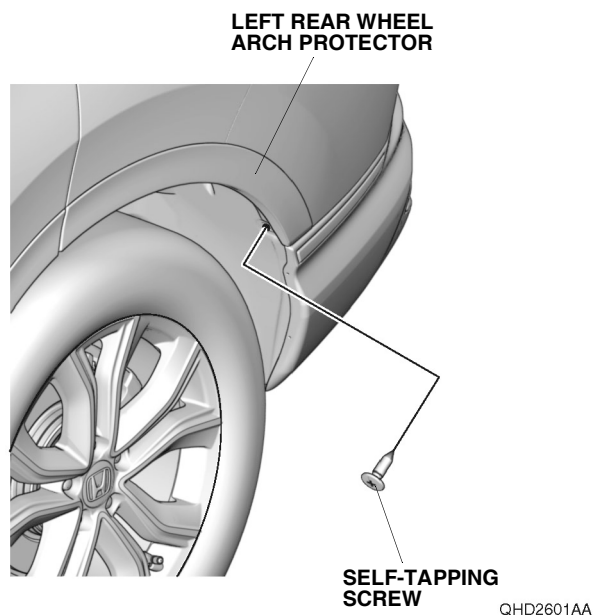
- With the help of an assistant, remove the front bumper, and unplug the vehicle connectors (if equipped).
- Place the front bumper on a blanket.



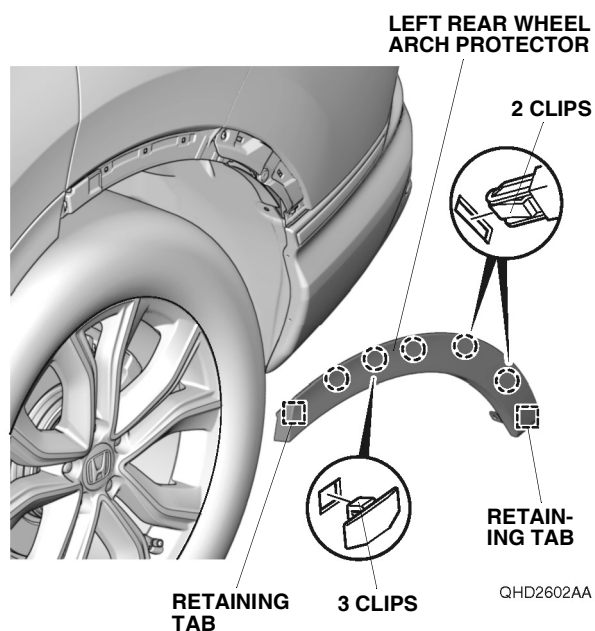
43. Release the left front inner fender.
NOTE: Do not fully remove the left front inner fender.



44. Remove the self-tapping screw from the left rear wheel arch protector.



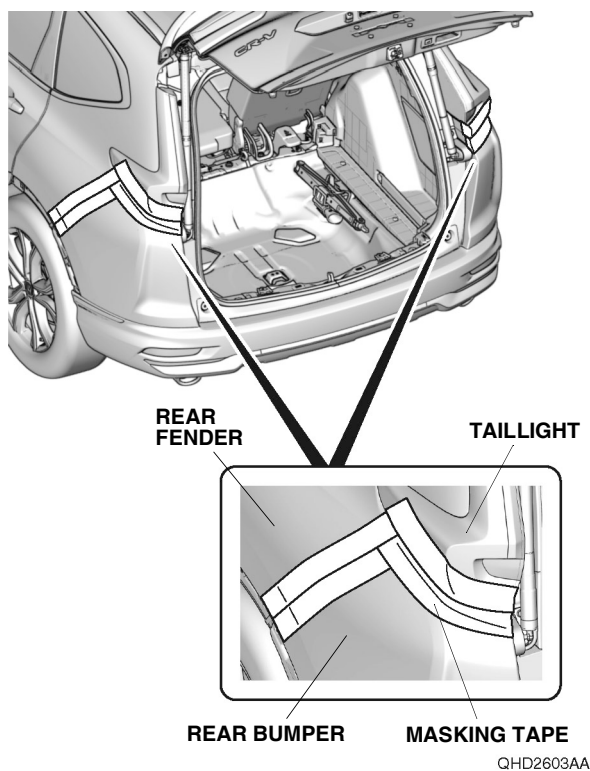
45. Remove the left rear wheel arch protector.



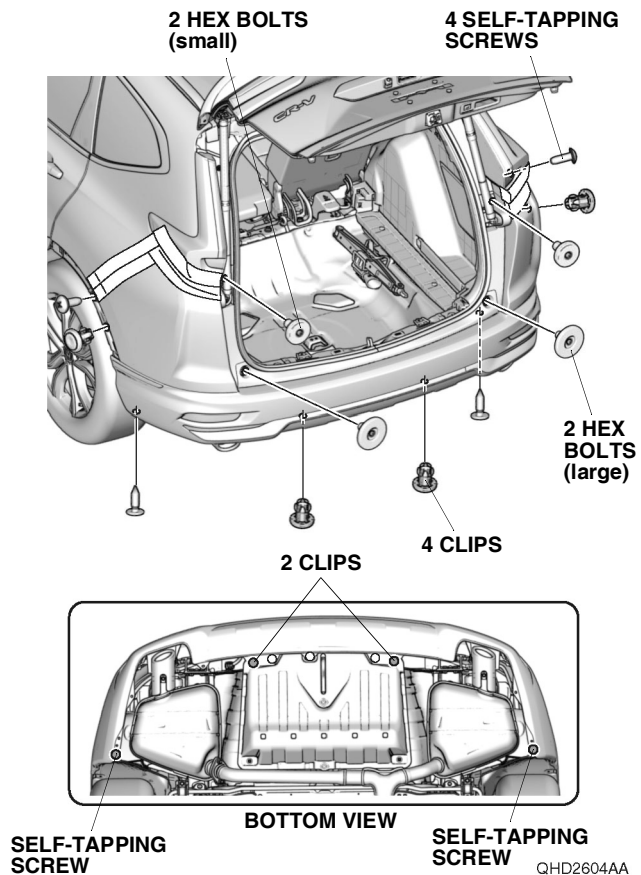
46. Repeat steps 44 and 45 on the right side of the vehicle.

47. Remove the rear bumper:

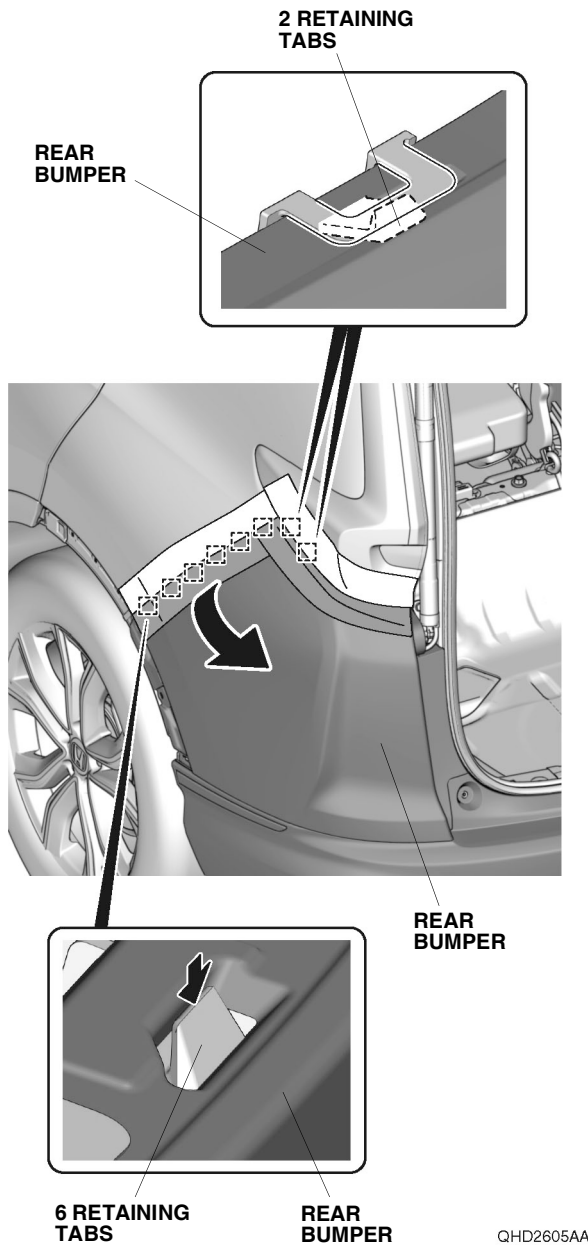
- Apply masking tape on each side as shown.



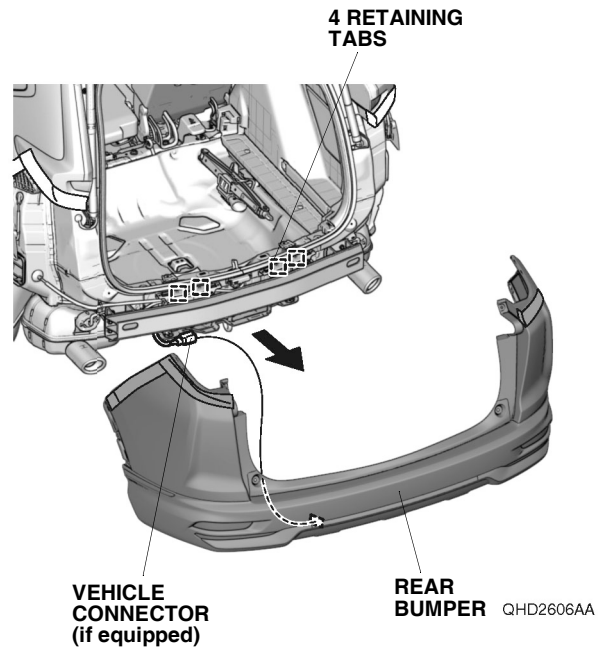
- Remove the four self-tapping screws, four clips, two hex bolts (large), and two hex bolts (small) as shown.



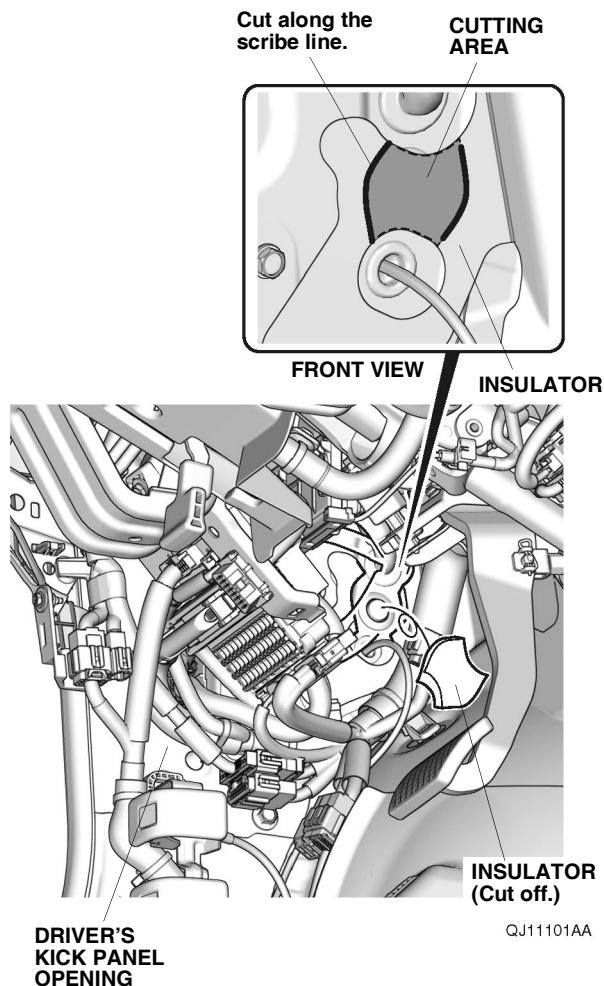
- With the help of an assistant, release the eight retaining tabs on each side.



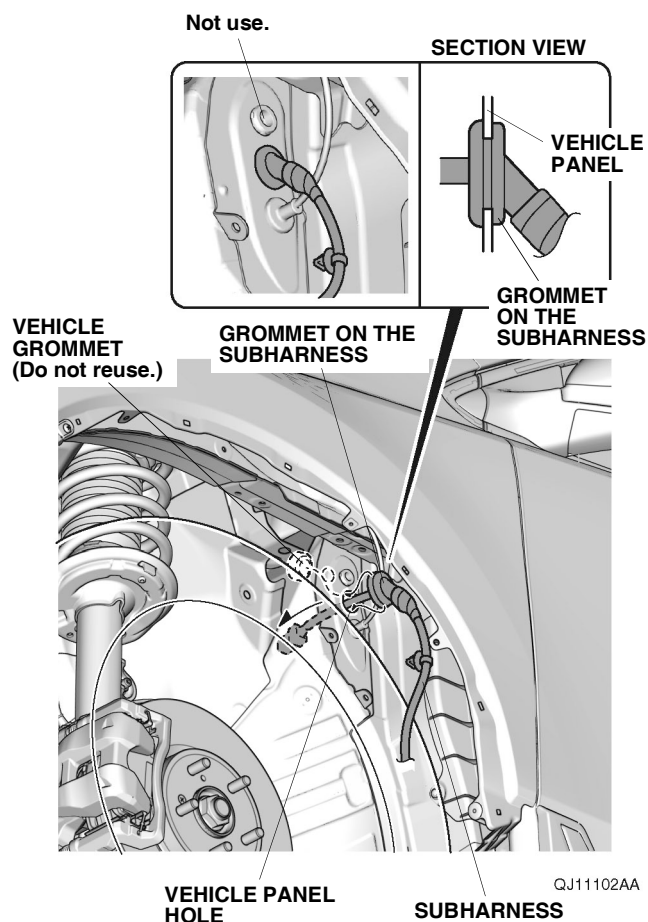
- With the help of an assistant, remove the rear bumper, and unplug the vehicle connector (if equipped).
- Place the rear bumper on a blanket.



48. Using a utility knife, cut off the insulator as shown.



49. Remove the vehicle grommet. Route the subharness through the vehicle panel hole as shown.

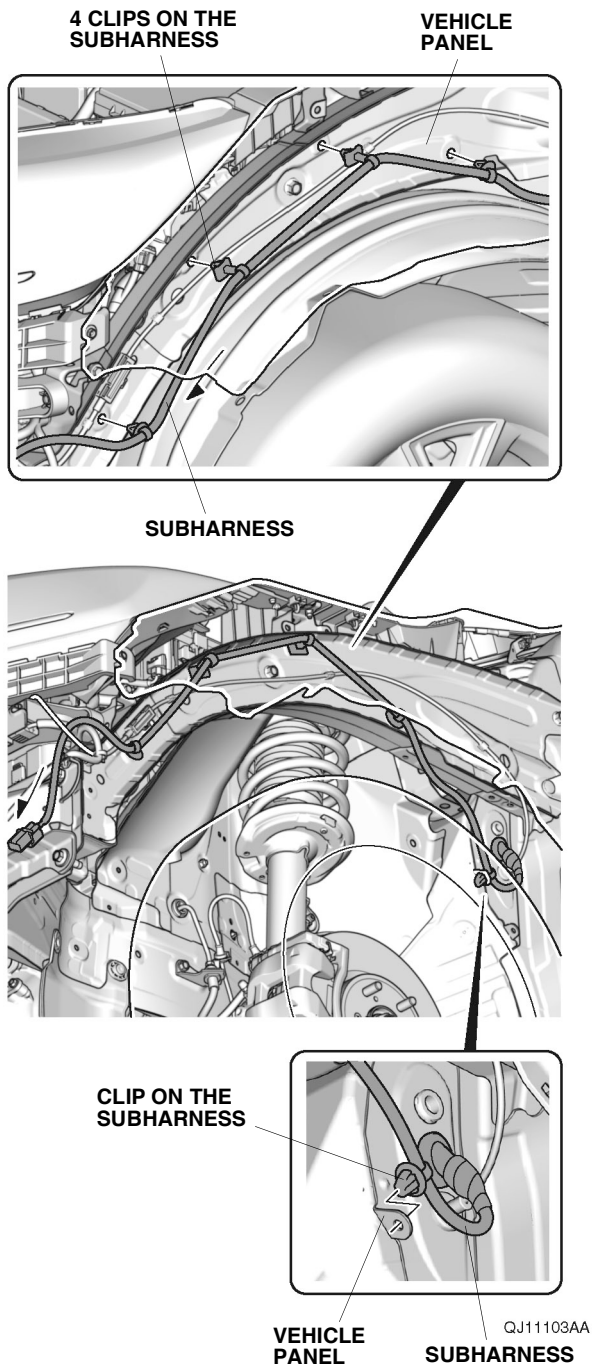


50. Install the grommet on the subharness to the vehicle panel hole.

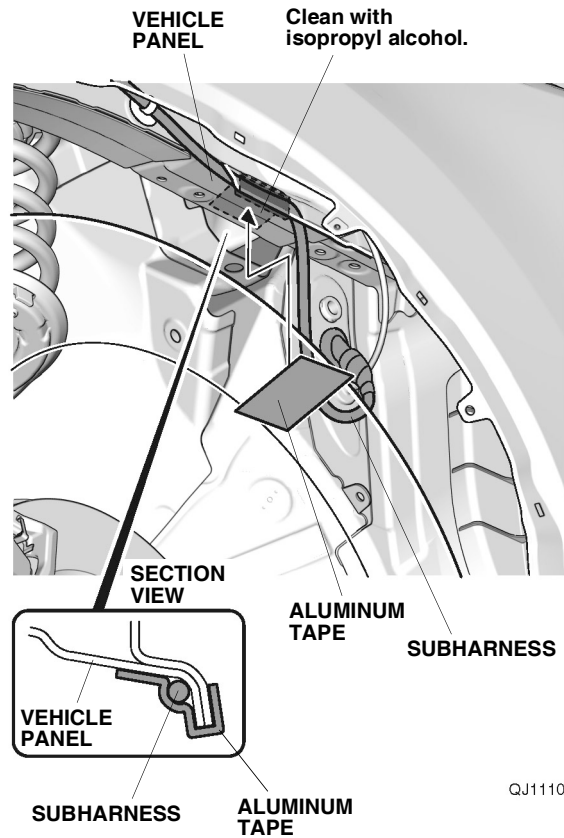
NOTE:

- Install the subharness by holding the grommet.
- Make sure the grommet is seated properly.

51. Route the subharness as shown, and secure it to the vehicle panel with five clips on the subharness.

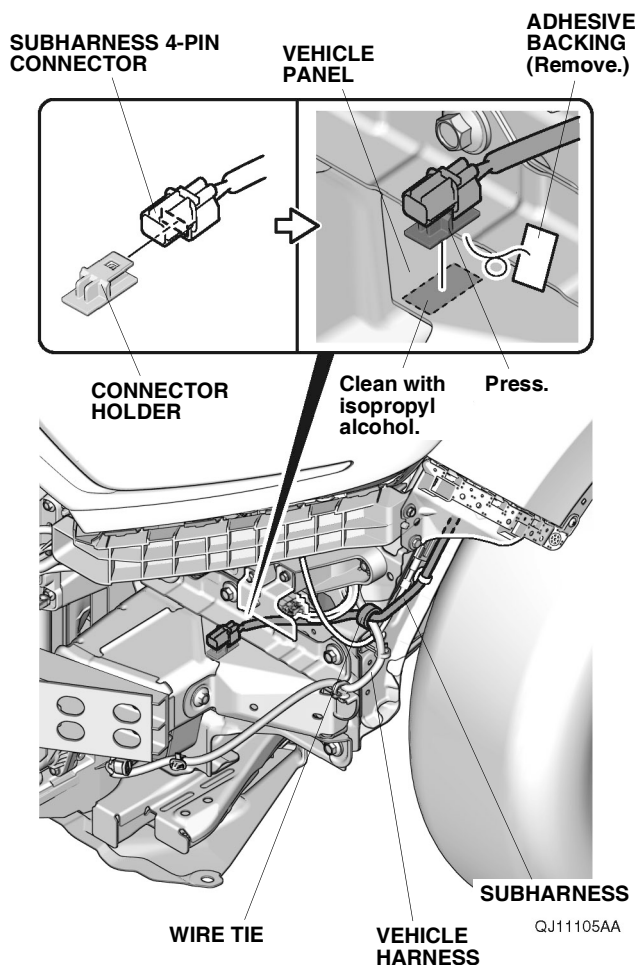


52. Using isopropyl alcohol on a shop towel, thoroughly clean the vehicle panel where the aluminum tape will attach.



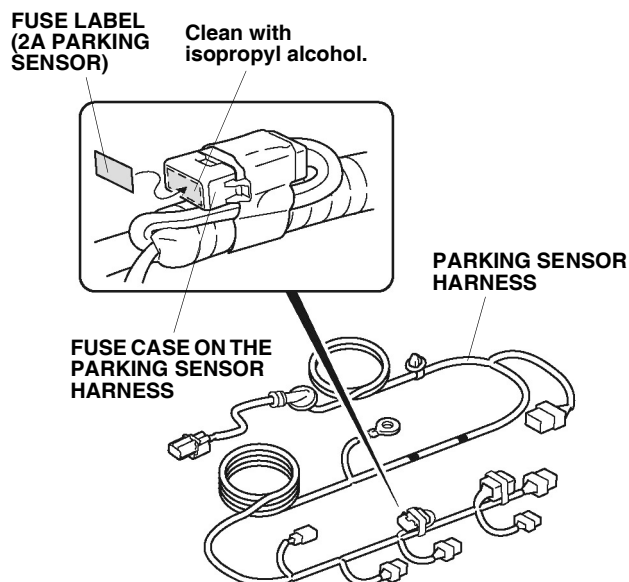
53. Secure the subharness to the vehicle panel with one piece of aluminum tape as shown.

54. Install the connector holder to the subharness 4-pin connector.



55. Using isopropyl alcohol on a shop towel, thoroughly clean the vehicle panel where the connector holder will attach.
56. Remove the adhesive backing from the connector holder, and secure the subharness 4-pin connector to the vehicle panel as shown.
57. Secure the subharness to the vehicle harness with one wire tie.

58. Using isopropyl alcohol on a shop towel, thoroughly clean the fuse case where the fuse label will attach. Attach the fuse label (2A PARKING SENSOR) to the fuse case on the parking sensor harness.



QJ11401AA

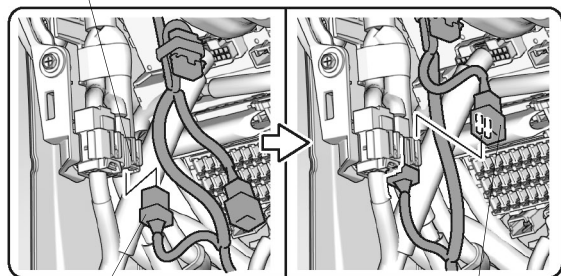
If the vehicle is equipped with accessory illuminated door sill trim harness 6-pin connector, go to step 61; otherwise, continue with step 59.

Without accessory illuminated door sill trim harness 6-pin connector

59. Plug the parking sensor harness 6-pin connector into the vehicle 6-pin connector.

VEHICLE 6-PIN CONNECTOR

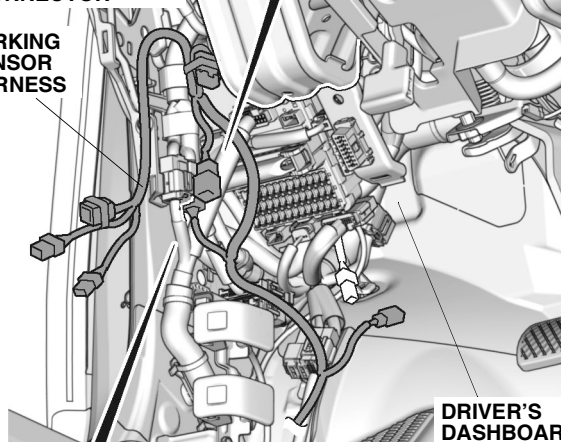
PETROL MODELS



PARKING SENSOR HARNESS 6-PIN CONNECTOR

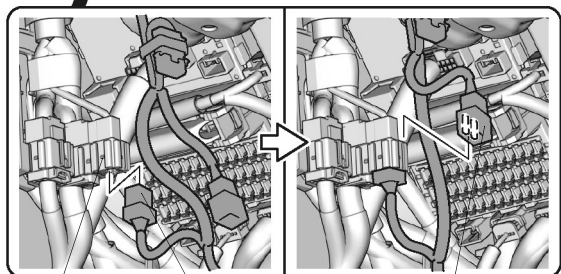
PARKING SENSOR HARNESS 6-PIN CONNECTOR

PARKING SENSOR HARNESS



DRIVER'S DASHBOARD LOWER COVER OPENING

HYBRID MODELS



VEHICLE 6-PIN CONNECTOR

PARKING SENSOR HARNESS 6-PIN CONNECTOR

PARKING SENSOR HARNESS 6-PIN CONNECTOR

QJ52212AG

60. Secure the parking sensor harness 6-pin connector to the vehicle 6-pin connector as shown. Go to step 64.

With accessory illuminated door sill trim harness 6-pin connector

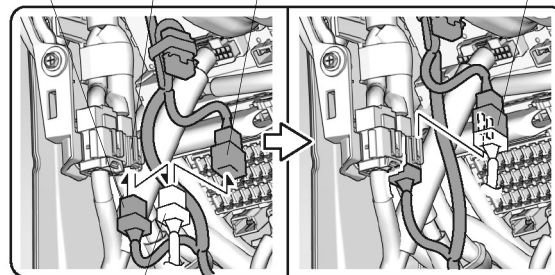
61. Unplug the accessory illuminated door sill trim harness 6-pin connector, and plug the parking sensor harness 6-pin connector into the vehicle 6-pin connector.

VEHICLE 6-PIN CONNECTOR

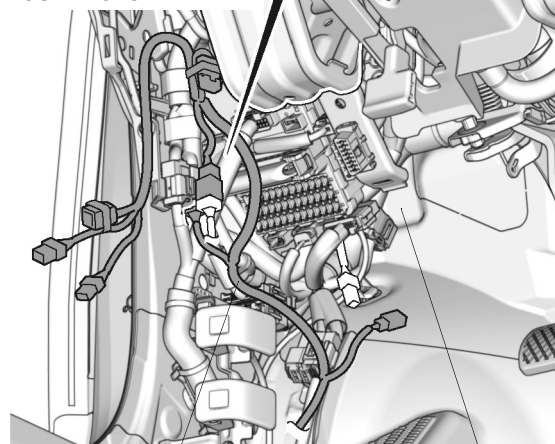
PARKING SENSOR HARNESS 6-PIN CONNECTOR

PARKING SENSOR HARNESS 6-PIN CONNECTOR

6-PIN CONNECTORS



ACCESSORY ILLUMINATED DOOR SILL TRIM HARNESS 6-PIN CONNECTOR



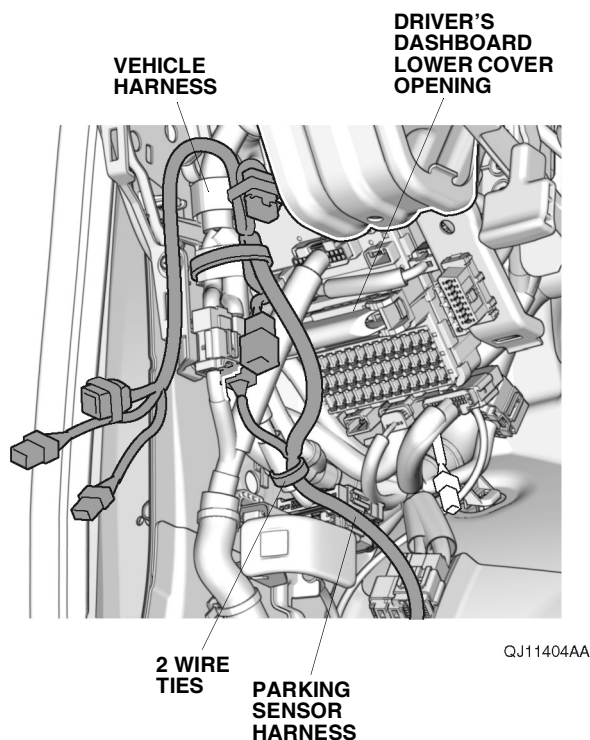
PARKING SENSOR HARNESS

QJ11403AA

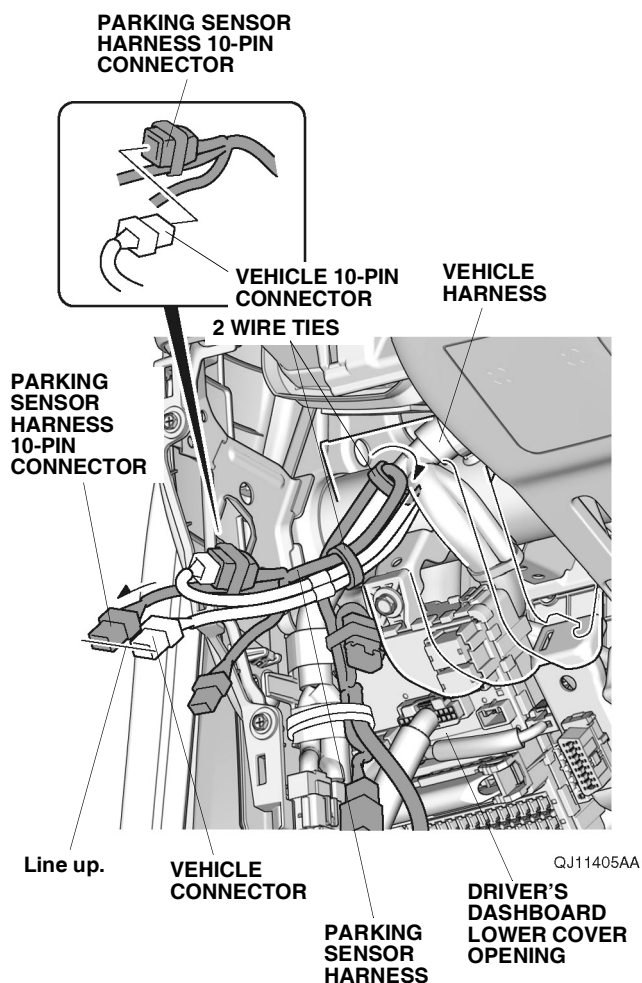
DRIVER'S DASHBOARD LOWER COVER OPENING

62. Plug the accessory illuminated door sill trim harness 6-pin connector into the parking sensor harness 6-pin connector.
63. Secure the 6-pin connectors to the vehicle 6-pin connector as shown.

64. Secure the parking sensor harness to the vehicle harness with two wire ties as shown.

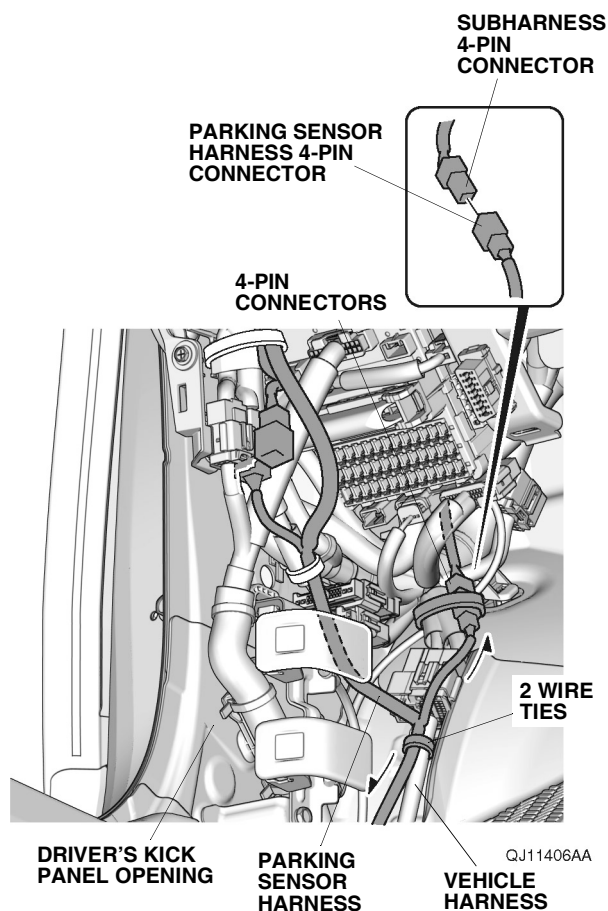


65. Route the parking sensor harness along the vehicle harness. Line up the parking sensor harness 10-pin connector with the vehicle connector, and secure the parking sensor harness to the vehicle harness with two wire ties.



66. Plug the vehicle 10-pin connector into the parking sensor harness 10-pin connector.

67. Route the parking sensor harness, and plug the subharness 4-pin connector into the parking sensor harness 4-pin connector.

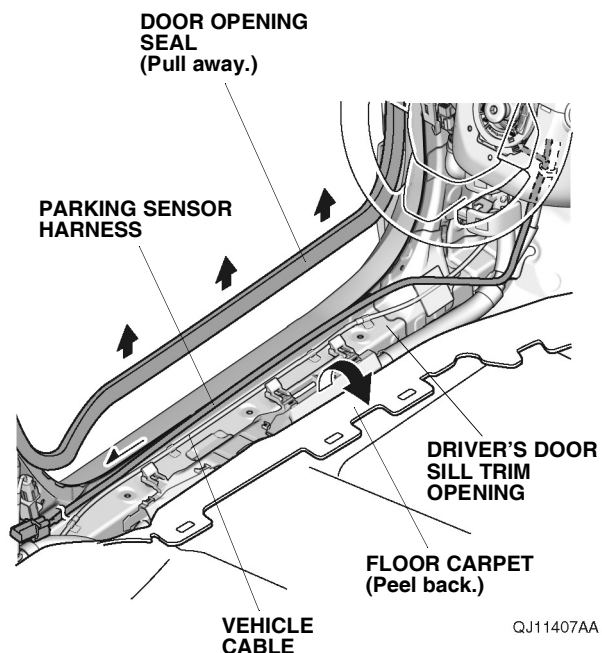


68. Secure the parking sensor harness and 4-pin connectors to the vehicle harness with two wire ties.

If the vehicle is equipped with accessory illuminated door sill trims, go to step 74; otherwise, continue with step 69.

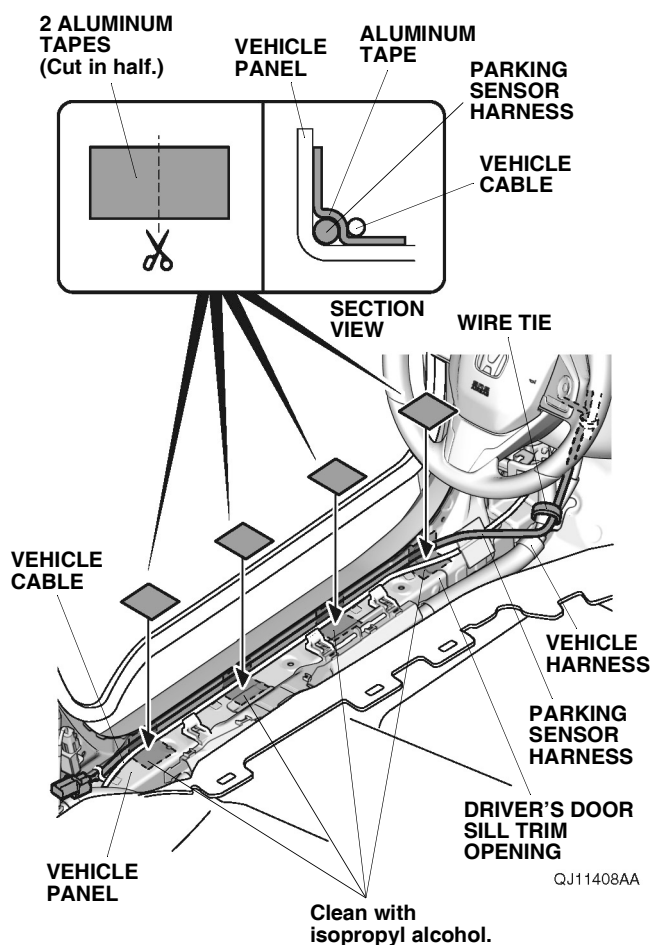
Without accessory illuminated door sill trims

69. Pull away the door opening seal, and peel back the floor carpet.



70. Route the parking sensor harness along the vehicle cable.

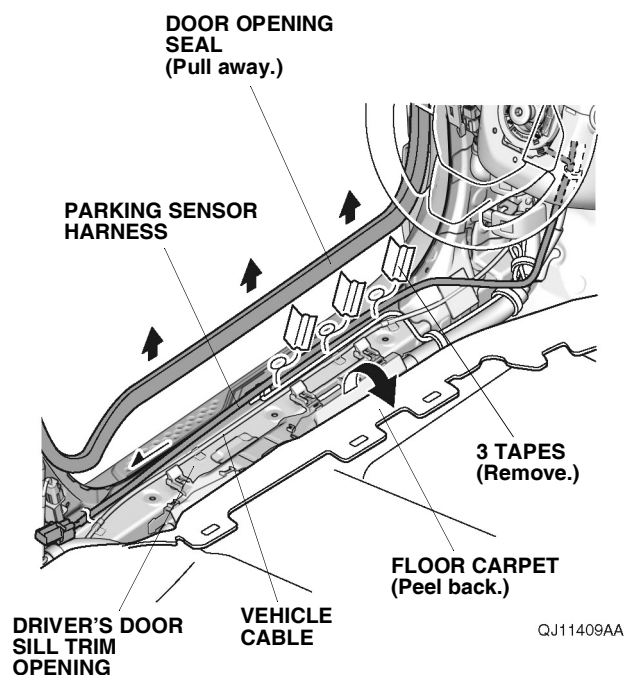
71. Secure the parking sensor harness to the vehicle harness with one wire tie.



72. Using isopropyl alcohol on a shop towel, thoroughly clean the vehicle panel where the aluminum tape will attach.
73. Using scissors, cut two pieces of aluminum tape in half, and secure the parking sensor harness to the vehicle panel with the aluminum tape as shown. Go to step 79.

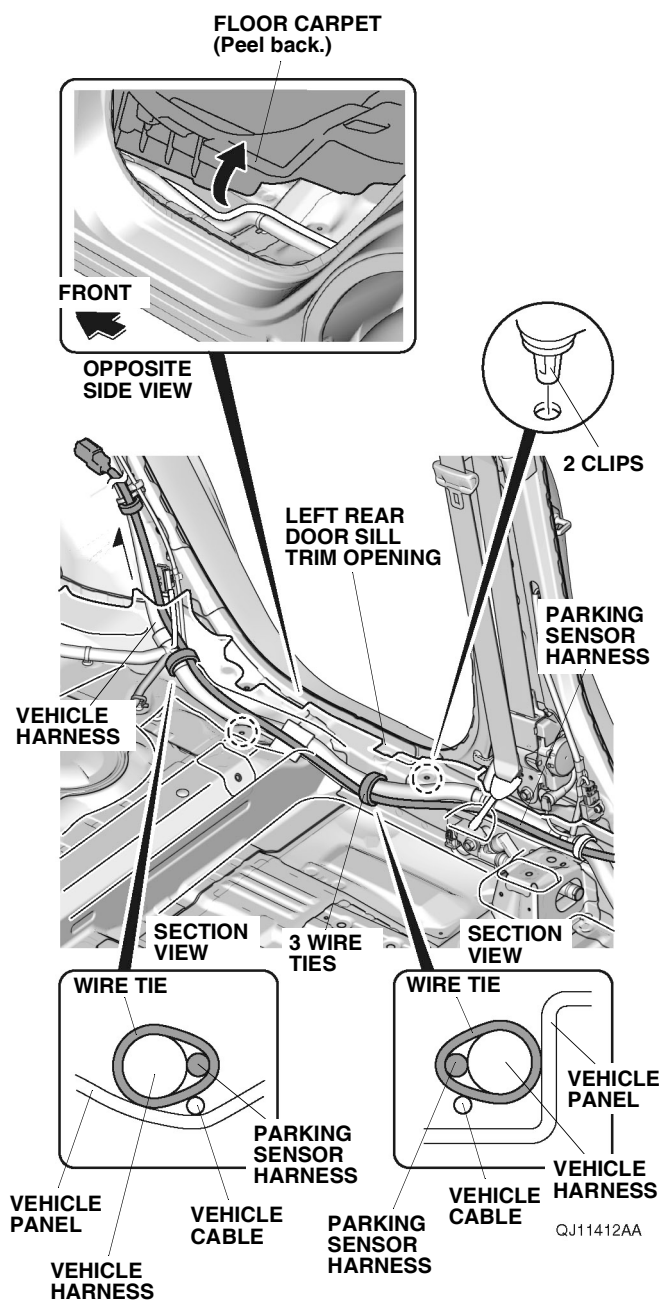
With accessory illuminated door sill trims

74. Pull away the door opening seal, and peel back the floor carpet.



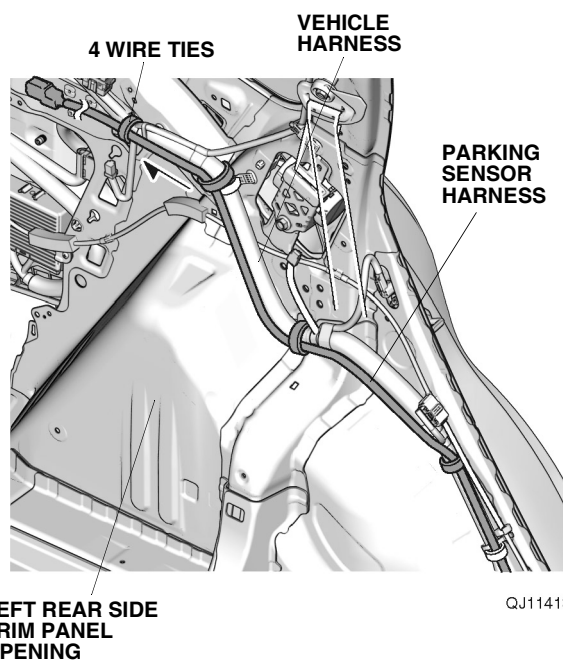
75. Remove the three tapes, and route the parking sensor harness along the vehicle cable.

81. Release the two clips, and peel back the floor carpet.

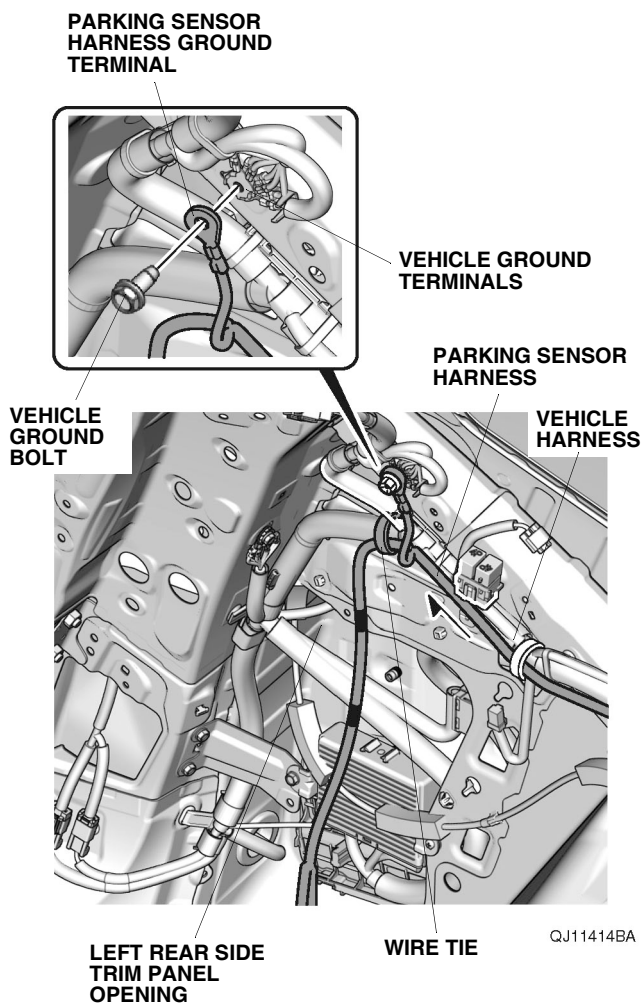


82. Route the parking sensor harness along the vehicle harness, and secure it to the vehicle harness with three wire ties as shown.

83. Route the parking sensor harness up along the vehicle harness, and secure it to the vehicle harness with four wire ties.



84. Route the parking sensor harness along the vehicle harness. Remove the vehicle ground bolt, and secure the parking sensor harness ground terminal to the vehicle ground terminals using that bolt. **NOTE:** Do not put the ground terminal calkings on top of one another.

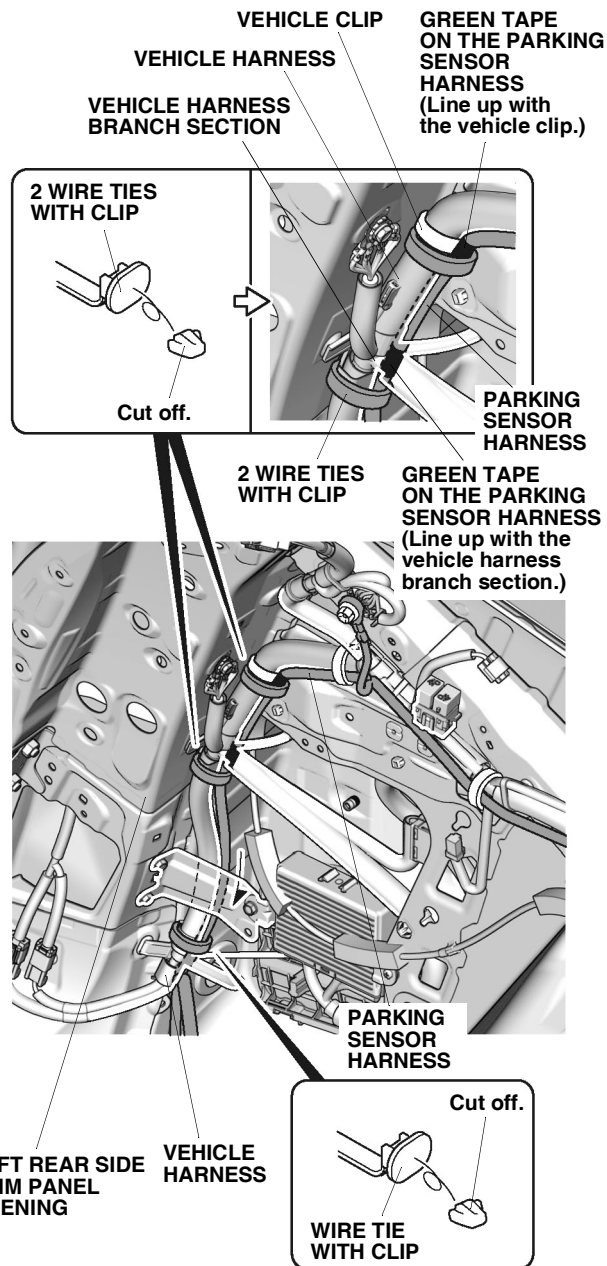


85. Secure the parking sensor harness to the vehicle harness with one wire tie.

If the vehicle harness is installed in the area shown, continue with step 86; otherwise, go to step 89.

With vehicle harness

86. Route the parking sensor harness down along the vehicle harness.

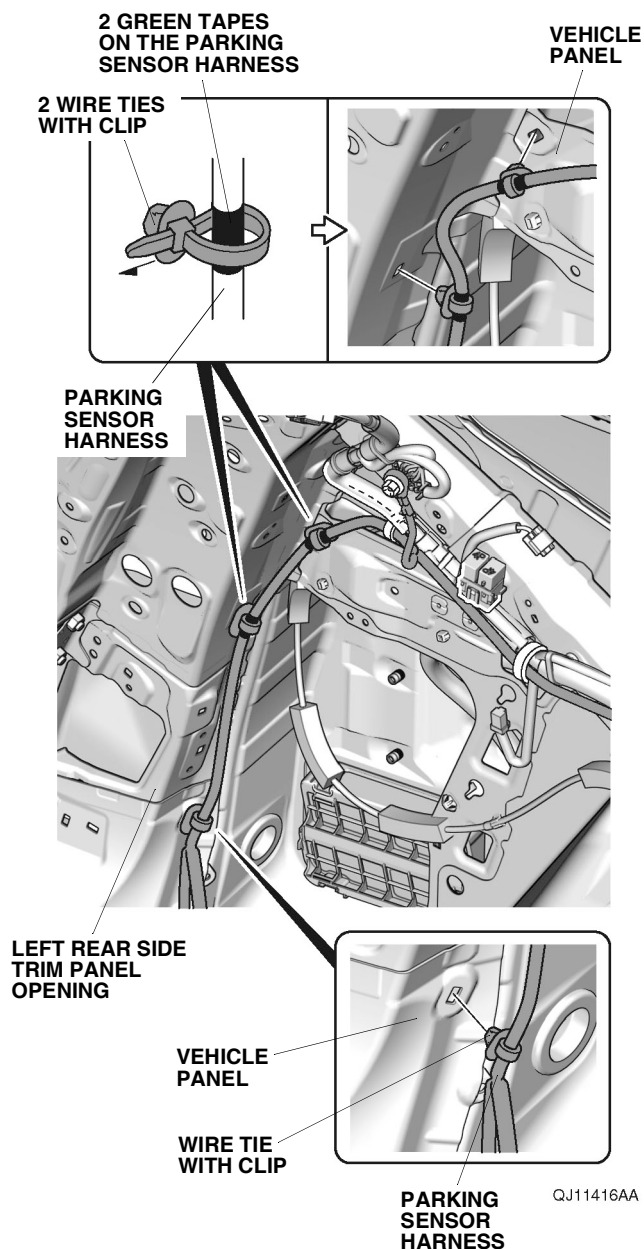


QJ11415AA

87. Using diagonal cutters, cut off the clip portion of three wire ties with clip.
88. Line up the green tape on the parking sensor harness with the vehicle clip and vehicle harness branch section, and secure the parking sensor harness to the vehicle harness with three wire ties with clip as shown. Go to step 91.

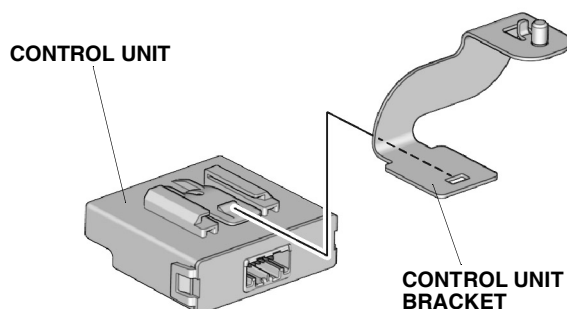
Without vehicle harness

89. Attach the two wire ties with clip to the two green tapes on the parking sensor harness as shown.



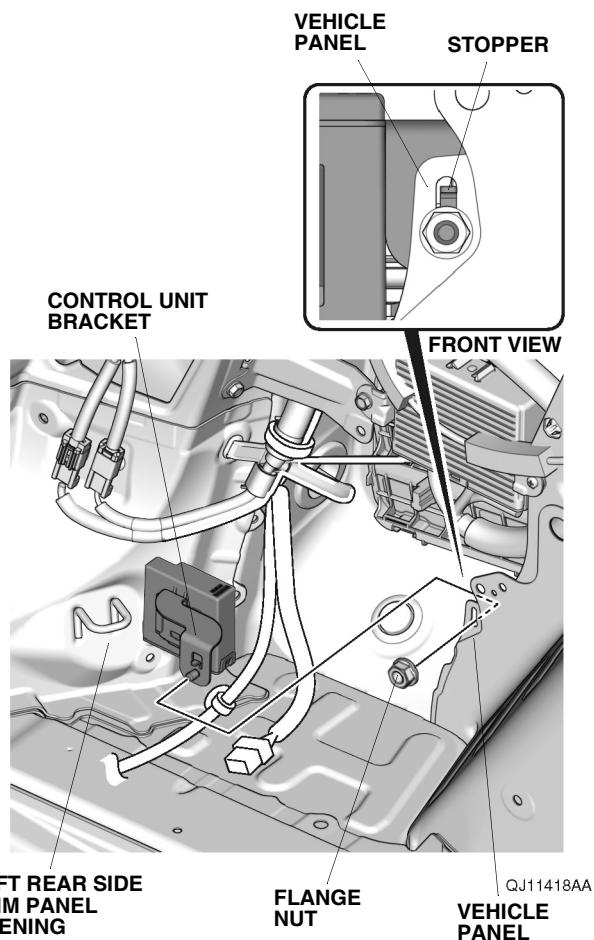
90. Secure the parking sensor harness to the vehicle panel with three wire ties with clip as shown.

91. Install the control unit bracket to the control unit.

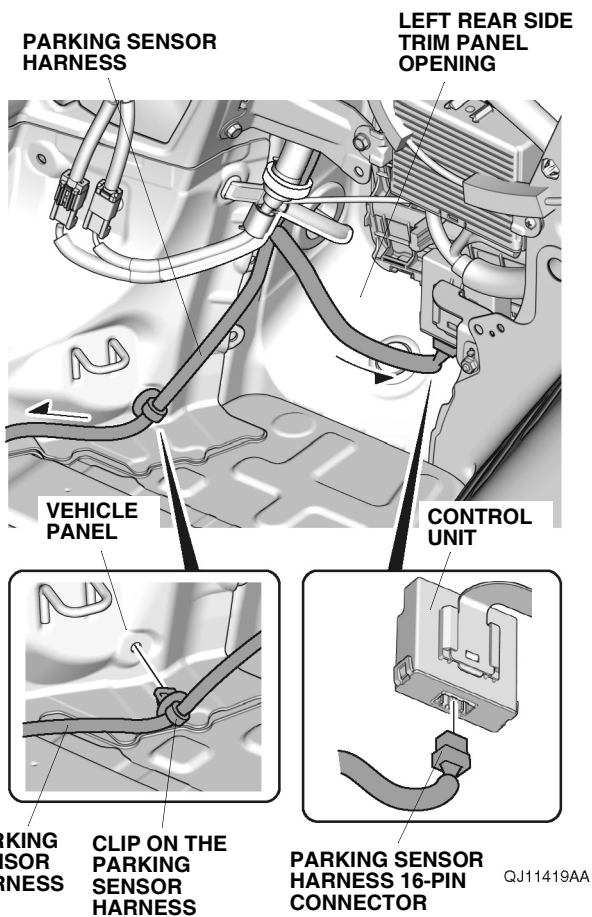


QJ11417AA

92. Install the control unit to the vehicle panel with one flange nut.

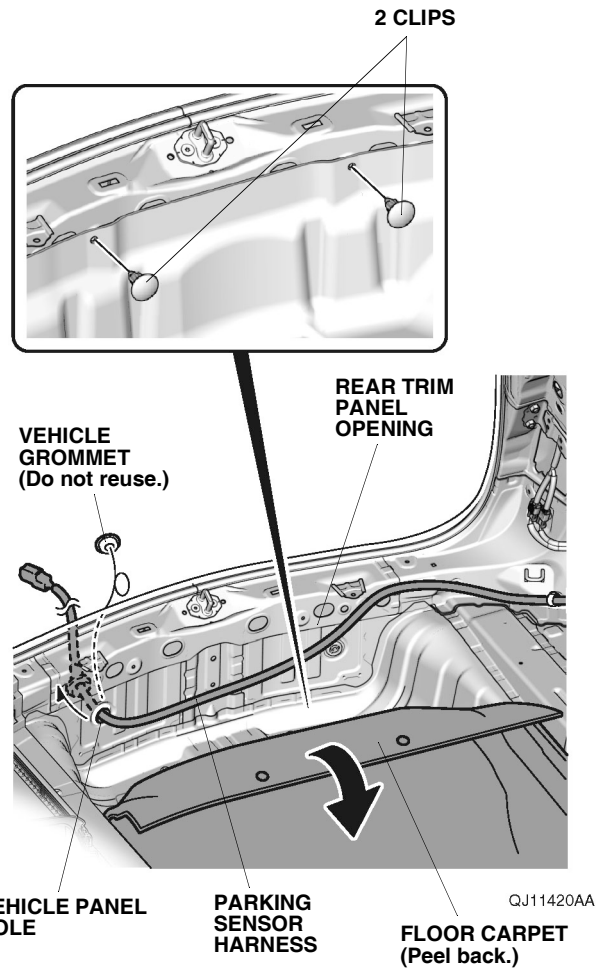


93. Plug the parking sensor harness 16-pin connector into the control unit.



94. Secure the parking sensor harness to the vehicle panel with clip on the parking sensor harness.

95. Remove the two clips, and peel back the floor carpet.

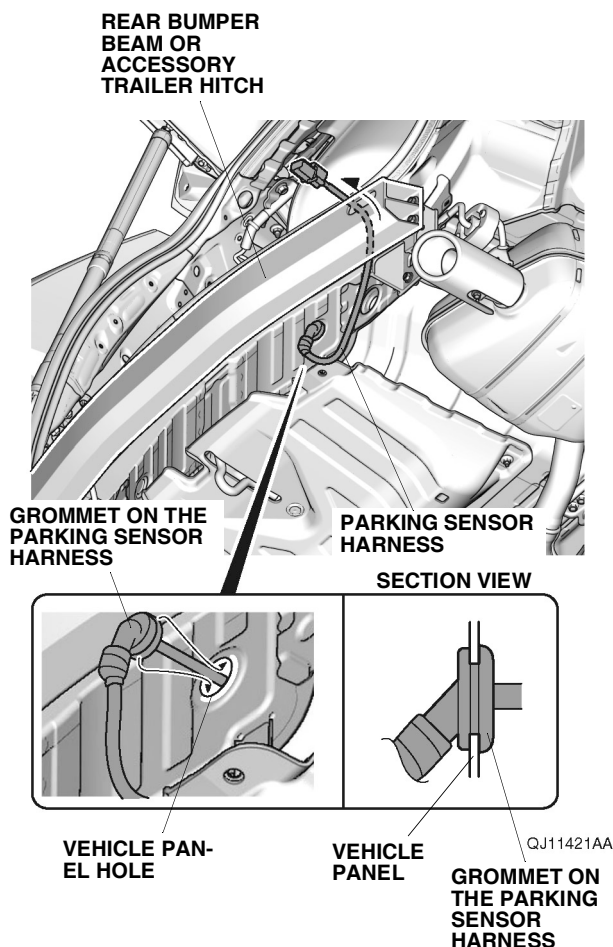


96. Remove the vehicle grommet, and route the parking sensor harness through the vehicle panel hole as shown.

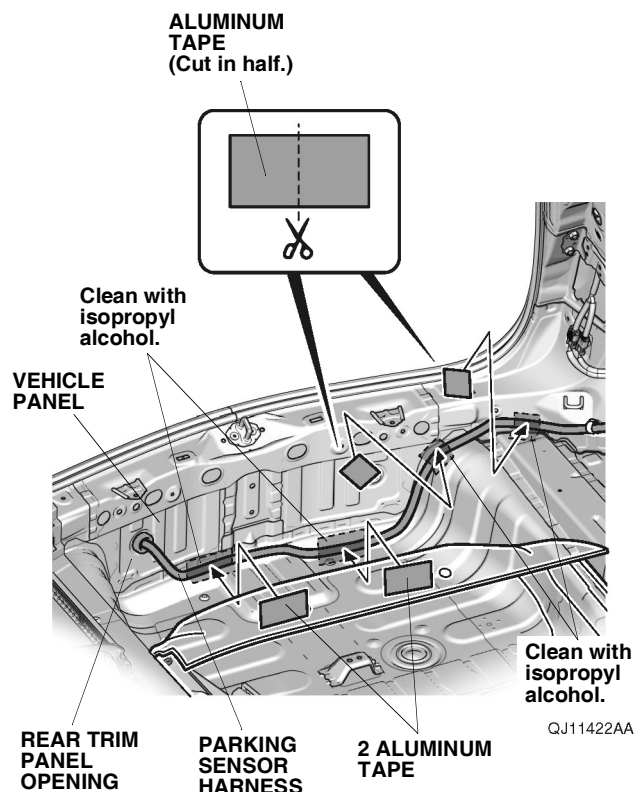
97. Secure the grommet on the parking sensor harness into the vehicle panel hole. Route the parking sensor harness as shown.

NOTE:

- Install the parking sensor harness by holding the grommet.
- Make sure to check that the grommet is secured properly.



98. Using isopropyl alcohol on a shop towel, thoroughly clean the vehicle panel where the aluminum tape will attach.

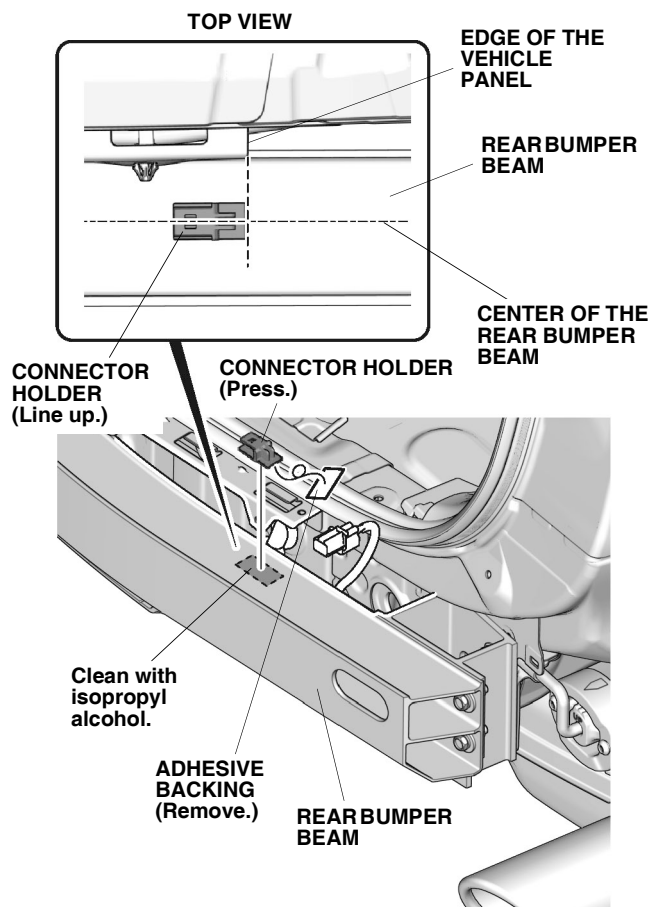


99. Secure the parking sensor harness to the vehicle panel with two pieces of aluminum tape.
100. Using scissors, cut one piece of aluminum tape in half, and secure the parking sensor harness to the vehicle panel with those two pieces of aluminum tape as shown.

If the vehicle is equipped with accessory trailer hitch, go to step 103; otherwise, continue with step 101.

Without accessory trailer hitch

101. Using isopropyl alcohol on a shop towel, thoroughly clean the rear bumper beam where the connector holder will attach.

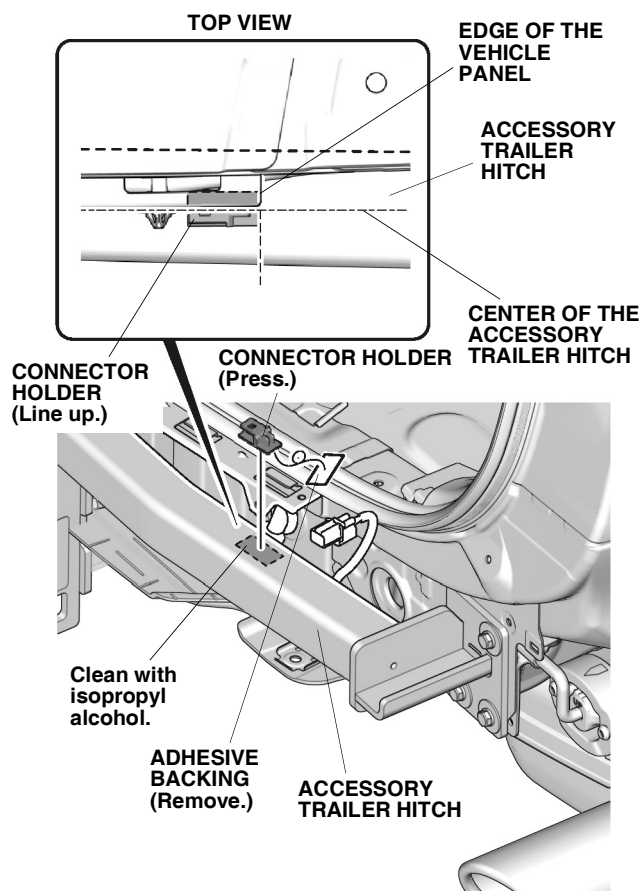


QJ11423AA

102. Remove the adhesive backing from the connector holder, and attach the connector holder to the rear bumper beam as shown. Go to step 105.

With accessory trailer hitch

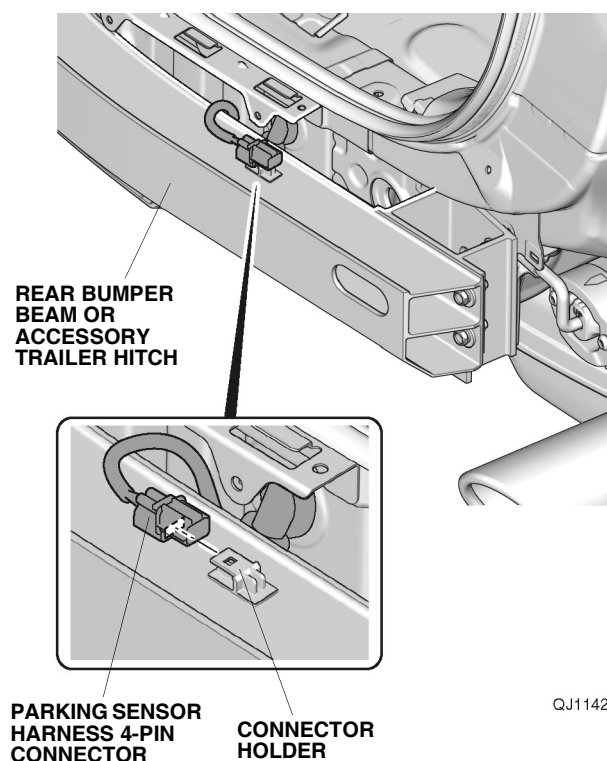
103. Using isopropyl alcohol on a shop towel, thoroughly clean the accessory trailer hitch where the connector holder will attach.



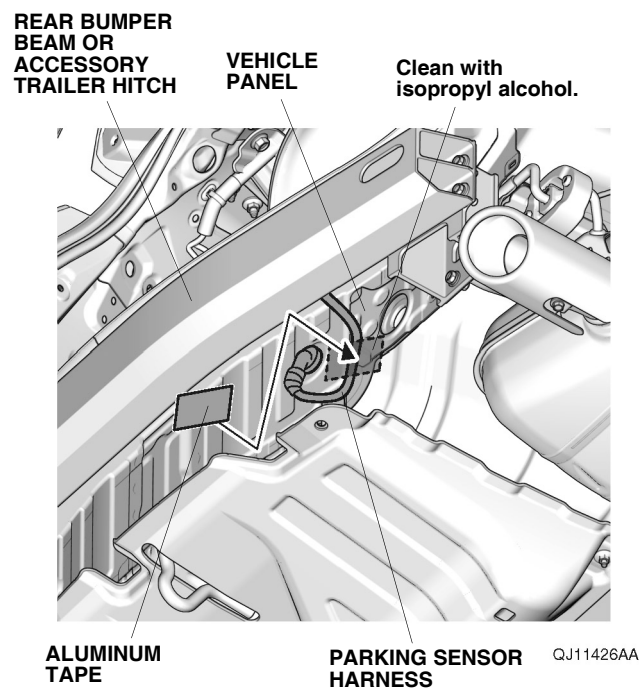
QJ11424AA

104. Remove the adhesive backing from the connector holder, and attach the connector holder to the accessory trailer hitch as shown.

105. Secure the parking sensor harness 4-pin connector to the connector holder.

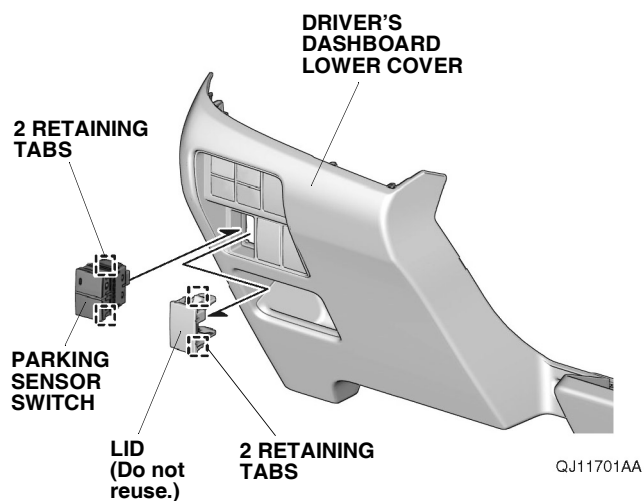


106. Using isopropyl alcohol on a shop towel, thoroughly clean the vehicle panel where the aluminum tape will attach.

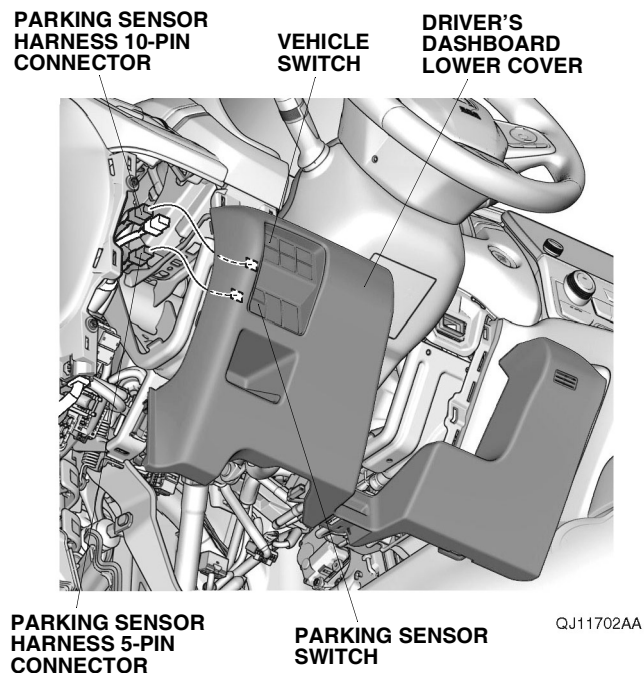


107. Secure the parking sensor harness to the vehicle panel with one piece of aluminum tape as shown.

108. Remove the lid from the driver's dashboard lower cover.

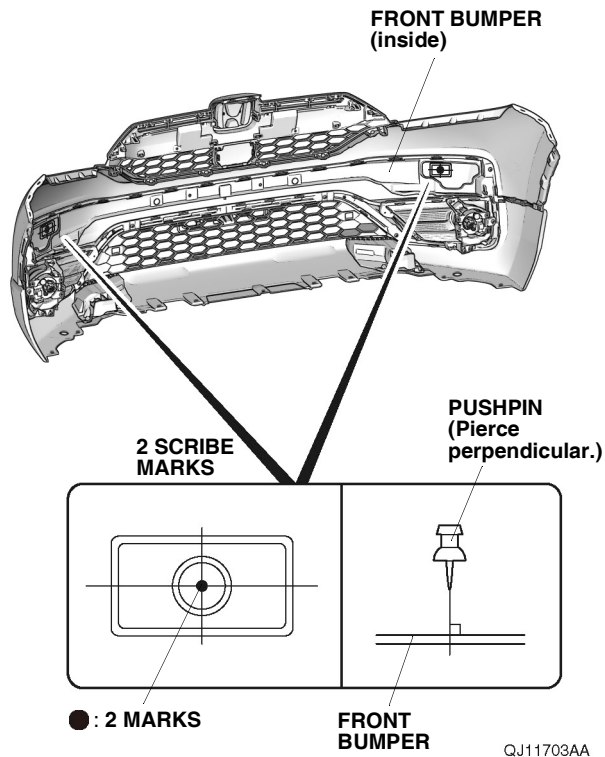


109. Install the parking sensor switch to the driver's dashboard lower cover with two retaining tabs.
110. Plug the parking sensor harness 5-pin connector and 10-pin connector into the parking sensor switch and vehicle switch. Install the driver's dashboard lower cover.



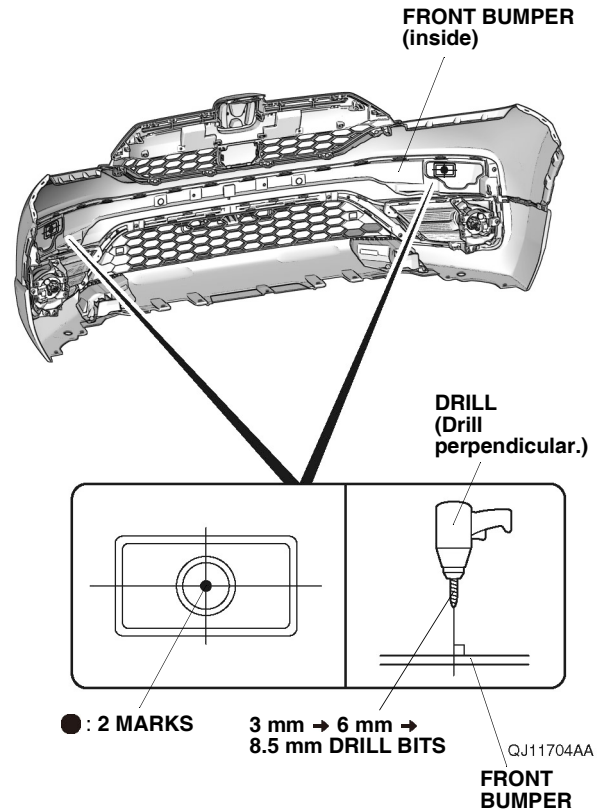
111. Mark the inside of the front bumper.

- Locate the two scribe marks on the inside of the front bumper.
- Using a pushpin, pierce the front bumper at the center of the two scribe marks.
NOTE: Make sure to pierce the scribe marks perpendicular to the front bumper.



112. While wearing eye protection, drill the two pierced marks to 8.5 mm from the inside of the front bumper.

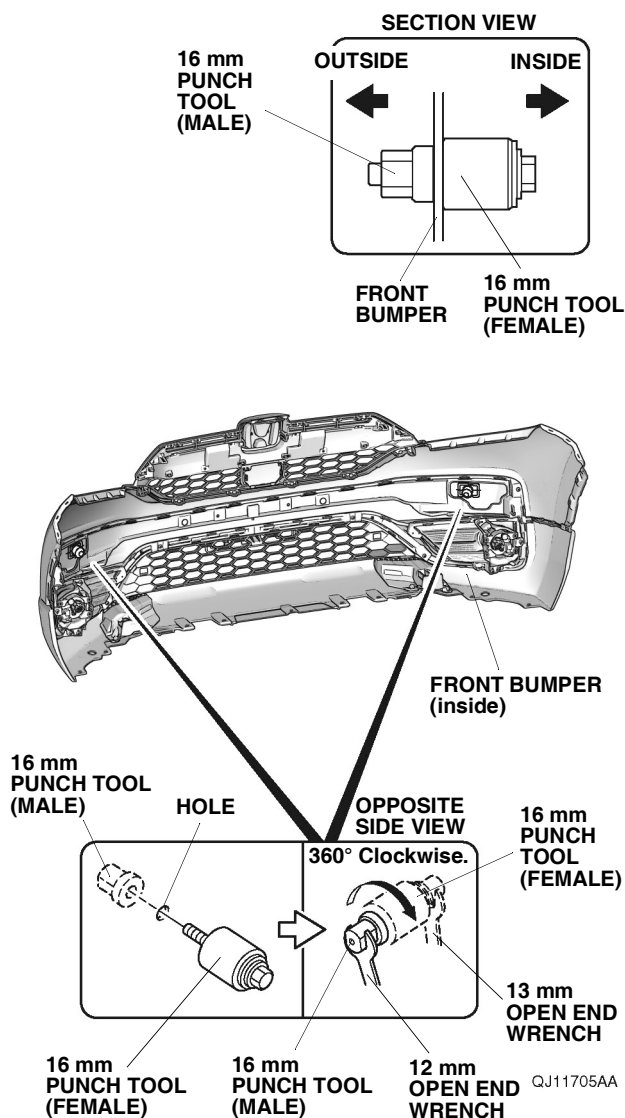
- First, drill with a 3 mm drill bit, then follow with a 6 mm drill bit, and finish with an 8.5 mm drill bit.
NOTE: Make sure to drill perpendicular to the front bumper. Remove any burrs.



113. Thread a 16 mm punch tool (female) into the hole on the front bumper. Then, install the 16 mm punch tool (male) onto the 16 mm punch tool (female). Holding the 16 mm punch tool (female) with a 13 mm open end wrench, turn the 16 mm punch tool (male) 360° clockwise with 12 mm open end wrench.

NOTE:

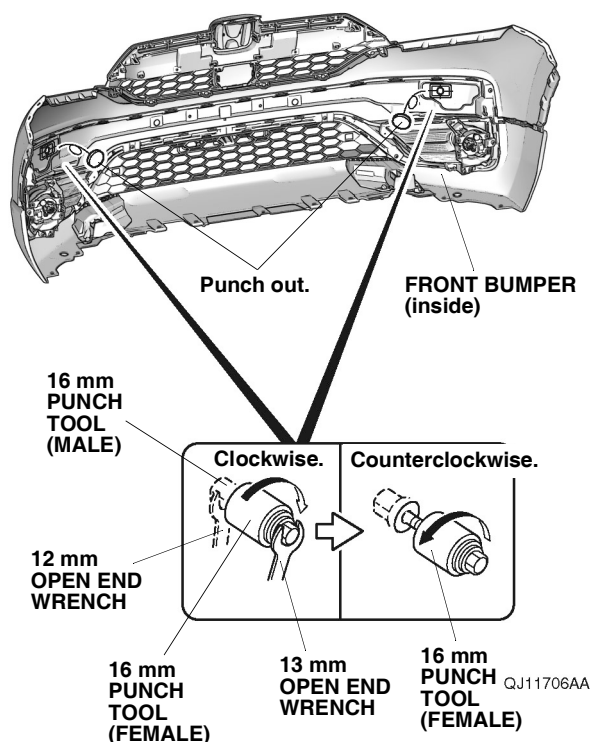
- With the punch tool snug against the bumper, make sure to rotate the male portion of the punch tool 360° clockwise.
- Always hold the punch tool perpendicular to the bumper while turning the wrenches.



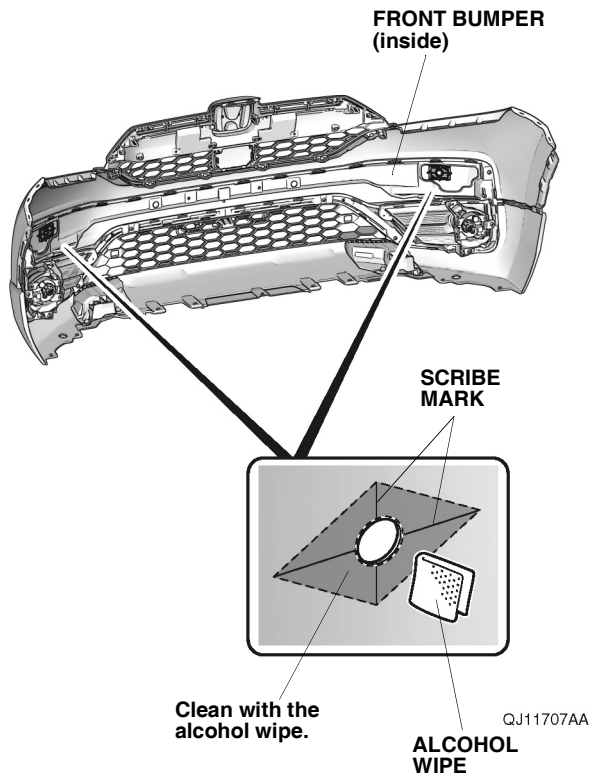
114. Holding the 16 mm punch tool (male) with a 12 mm open end wrench, turn the 16 mm punch tool (female) clockwise with 13 mm open end wrench to punch out the front bumper as shown.

NOTE:

- Always hold the punch tool perpendicular to the bumper while turning the wrenches.
- Make sure to remove the punched out material after every hole.



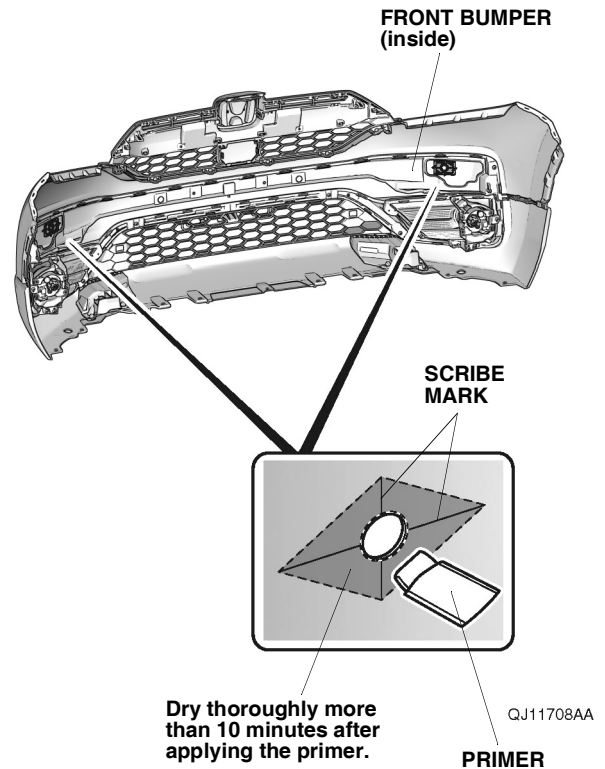
115. Using an alcohol wipe, thoroughly clean the front bumper where the two retainers A will attach.



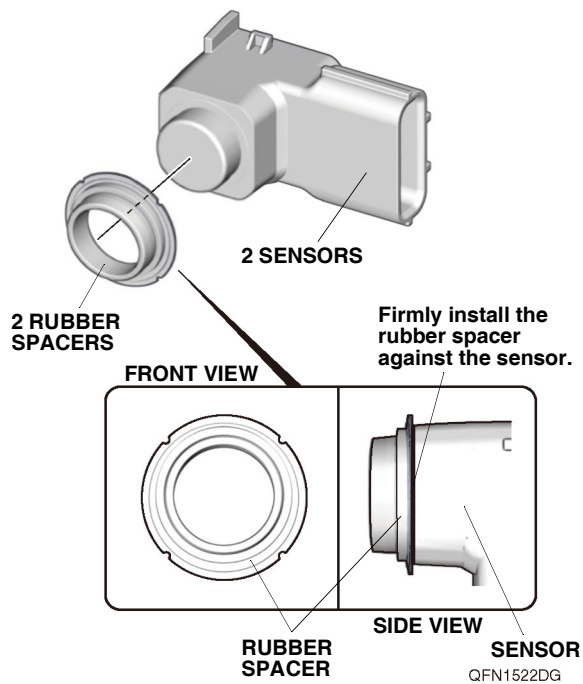
116. Apply the primer to the front bumper.

NOTE:

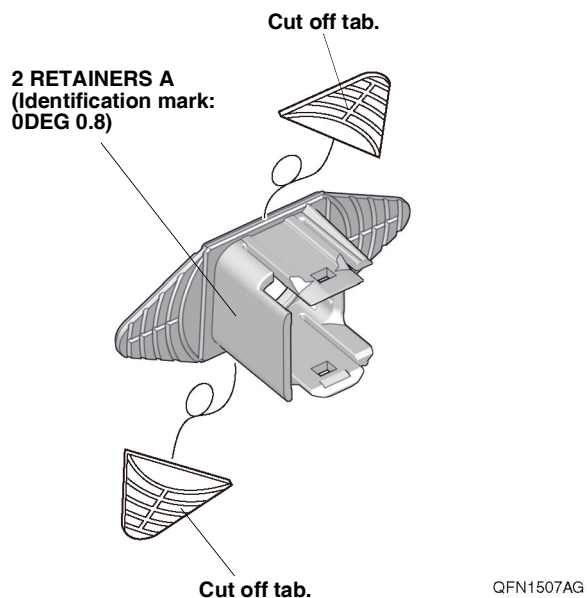
- Apply the primer evenly.
- Be careful not to apply the primer anywhere except the indicated area.
- Do not apply additional primer.
- Apply the primer, and let it dry for at least 10 minutes.
- Attach the retainers A within 24 hours after applying the primer.



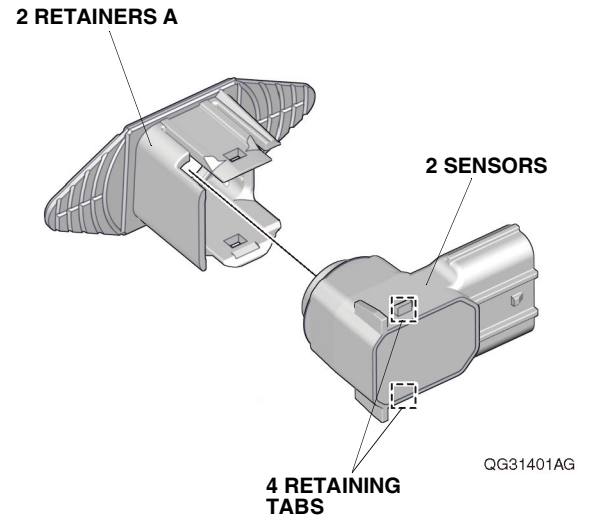
117. Install the two rubber spacers to the two sensors as shown.



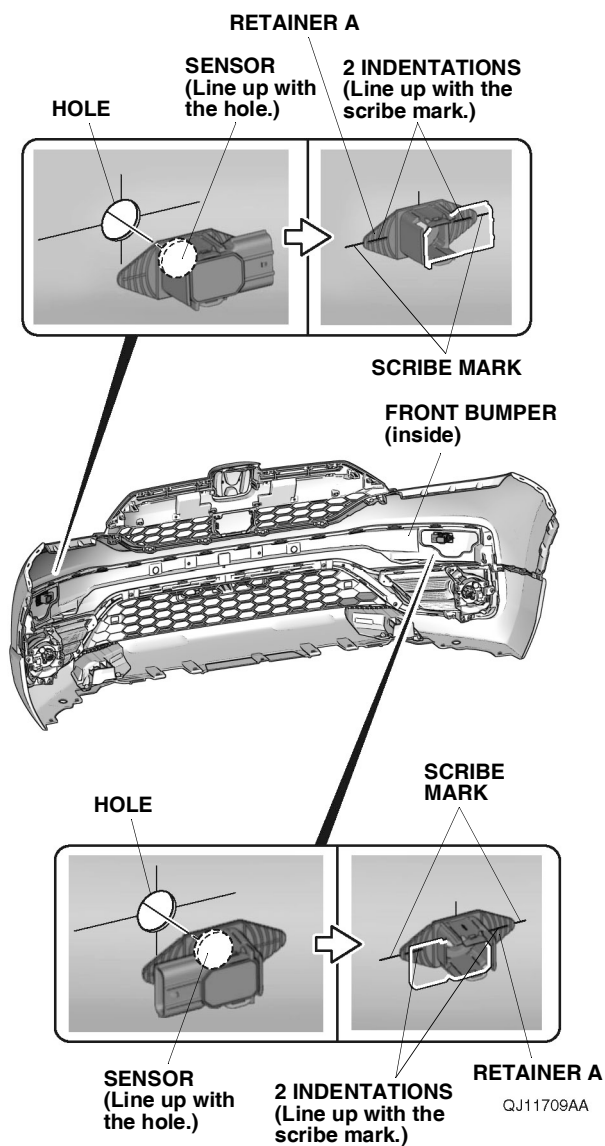
118. Using diagonal cutters, cut the tabs off the two retainers A as shown. Remove any burrs.
NOTE: Make sure to check the identification mark before installation.



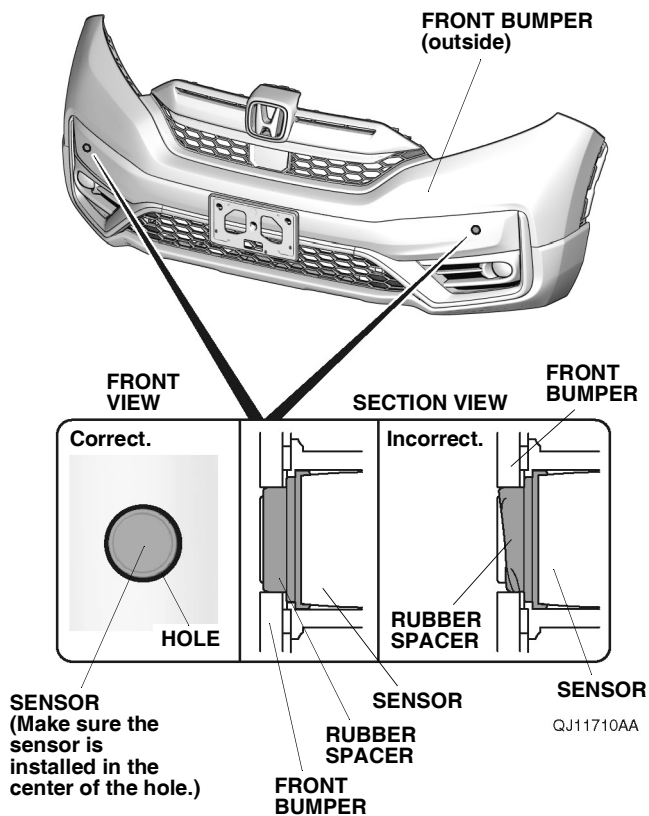
119. Install the two sensors to the two retainers A.



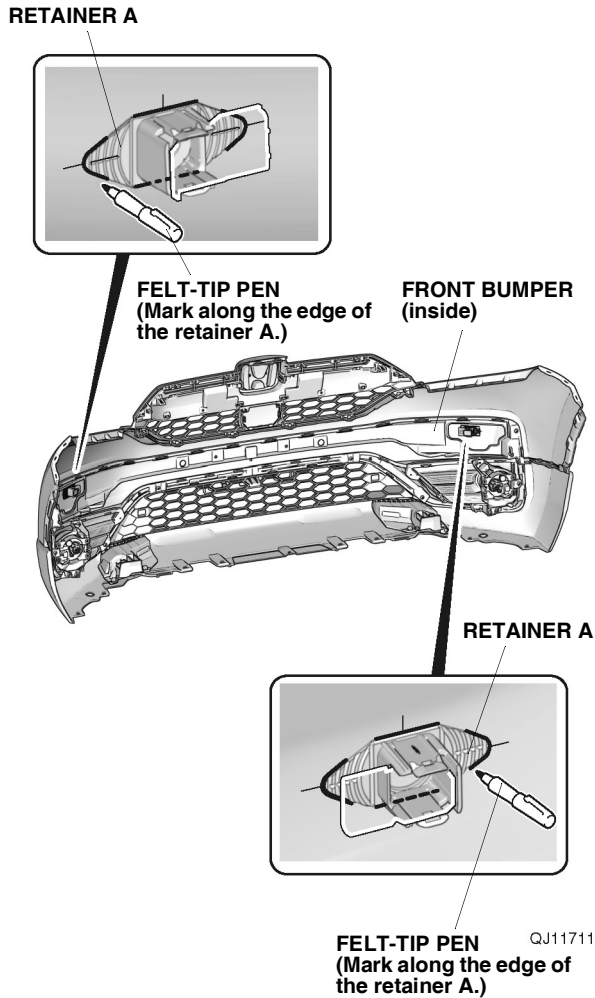
120. Line up the two sensors and two retainers A with the front bumper as shown.



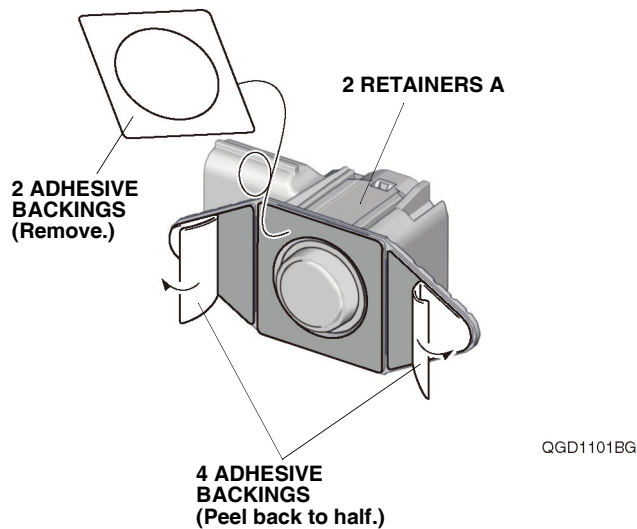
121. Make sure the two sensors are installed properly.



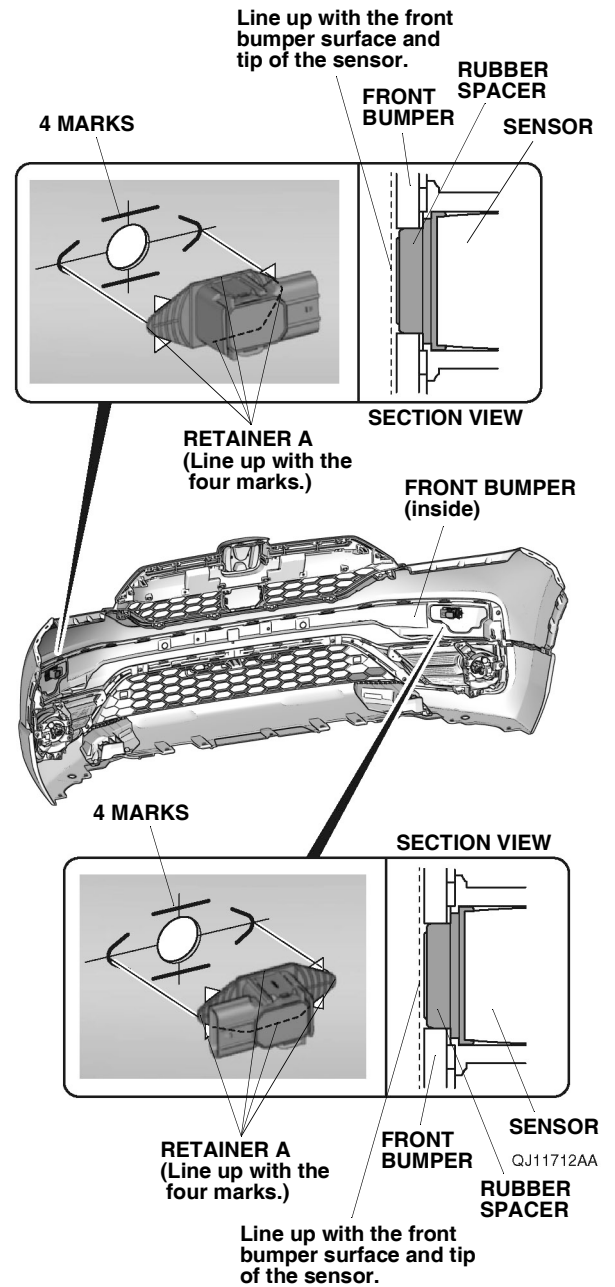
122. Using a felt-tip pen, mark the front bumper as shown.



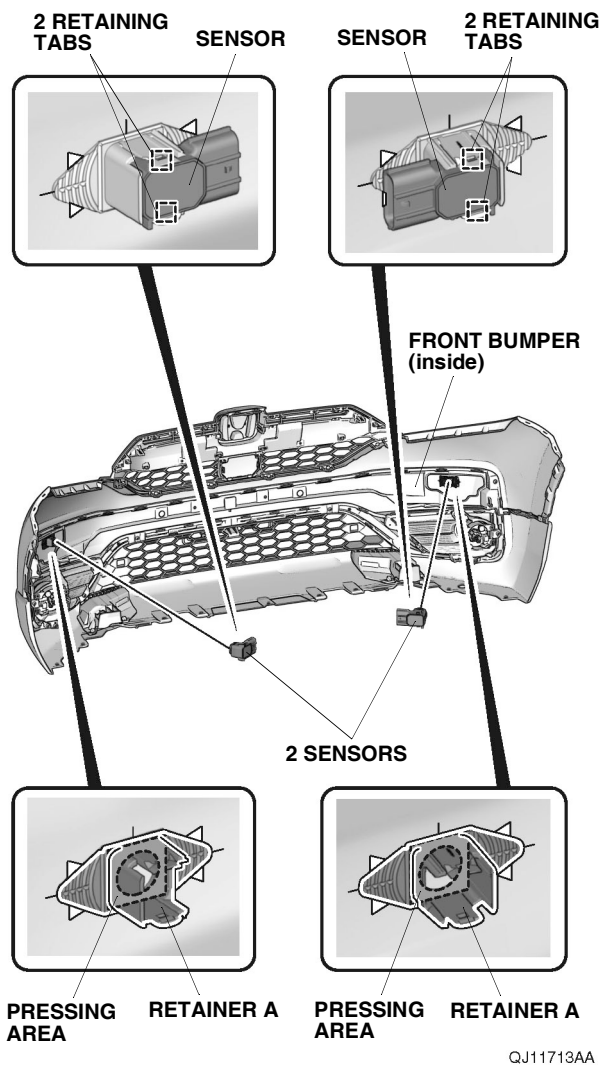
123. Remove the two adhesive backings and peel back the four adhesive backings as shown.



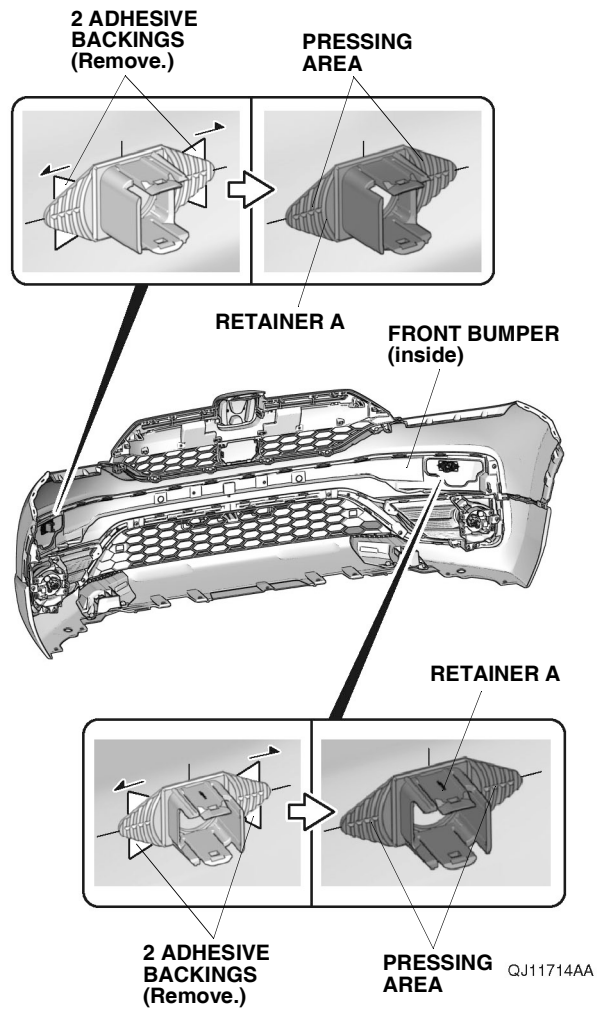
124. Attach the two retainers A to the front bumper as shown.



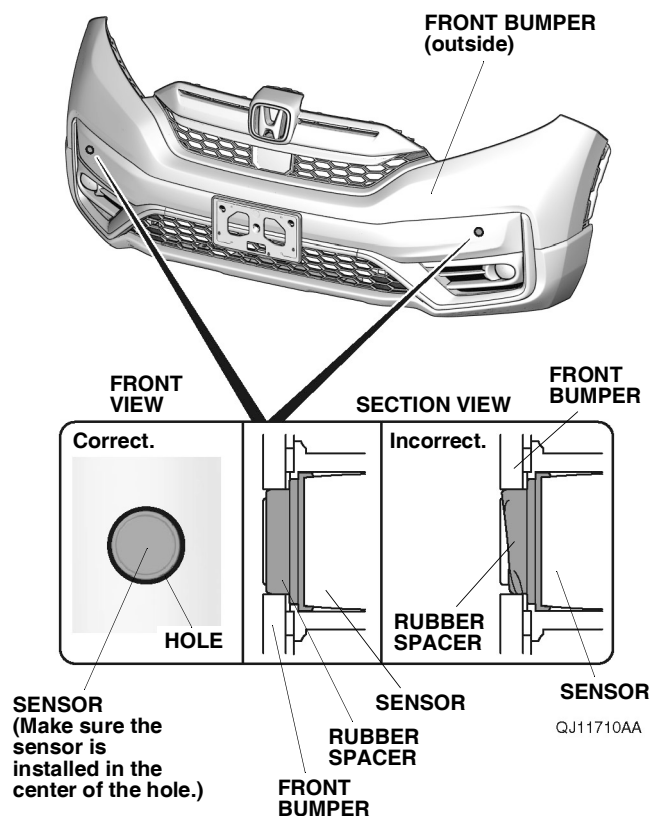
125. Remove the two sensors, and firmly press the two retainers A against the front bumper.



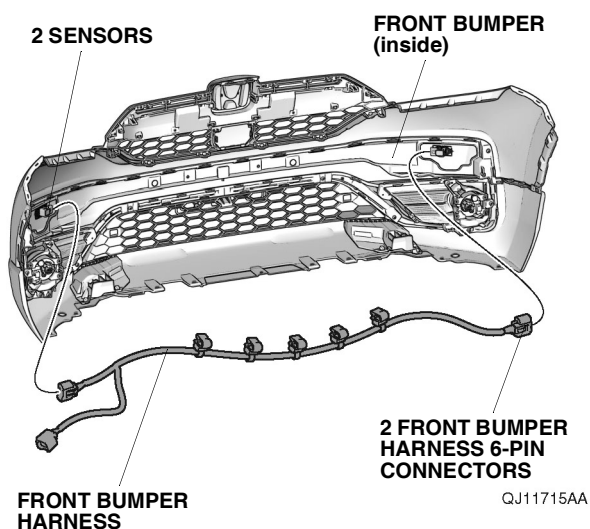
126. Remove the four adhesive backings, and firmly press the two retainers A against the front bumper. Install the two sensors.



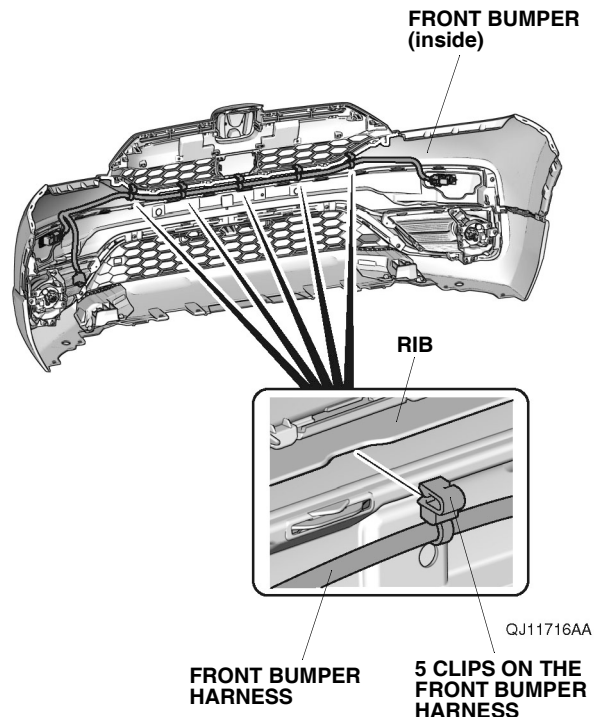
127. Make sure the two sensors are installed properly.



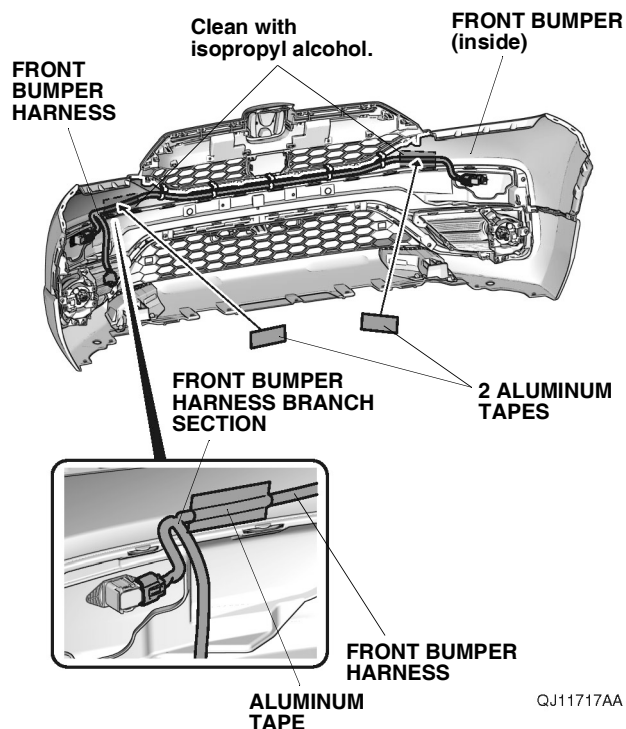
128. Plug the two front bumper harness 6-pin connectors into the two sensors.



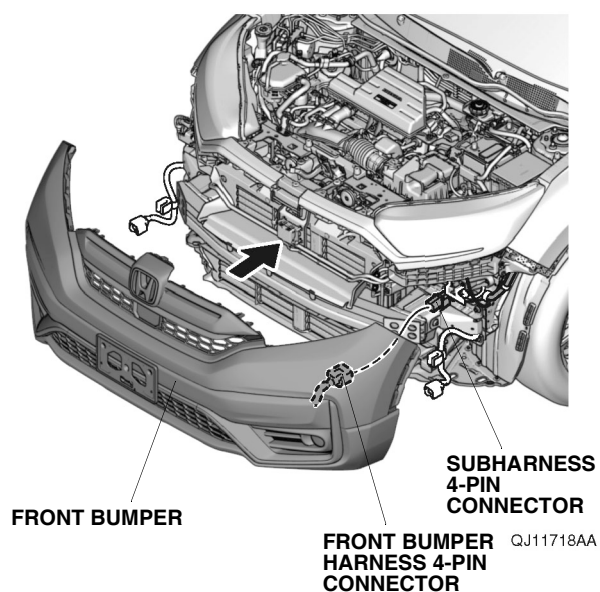
129. Secure the front bumper harness to the rib on the front bumper with five clips on the front bumper harness as shown.



130. Using isopropyl alcohol on a shop towel, thoroughly clean the front bumper where the aluminum tapes will attach.



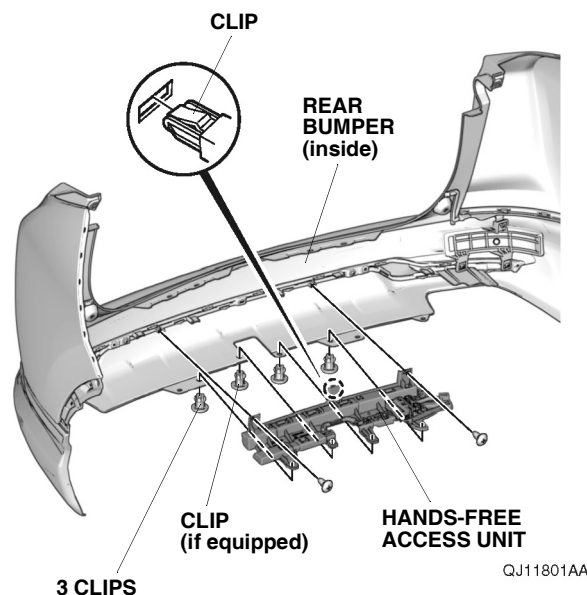
131. Secure the front bumper harness to the front bumper with two pieces of aluminum tape as shown.
132. With the help of an assistant, bring the front bumper close to the vehicle, and plug the front bumper harness 4-pin connector into the subharness 4-pin connector. Install the front bumper.



If the vehicle is equipped with Hands-Free Access Power Tailgate, continue with step 133; otherwise, go to step 134.

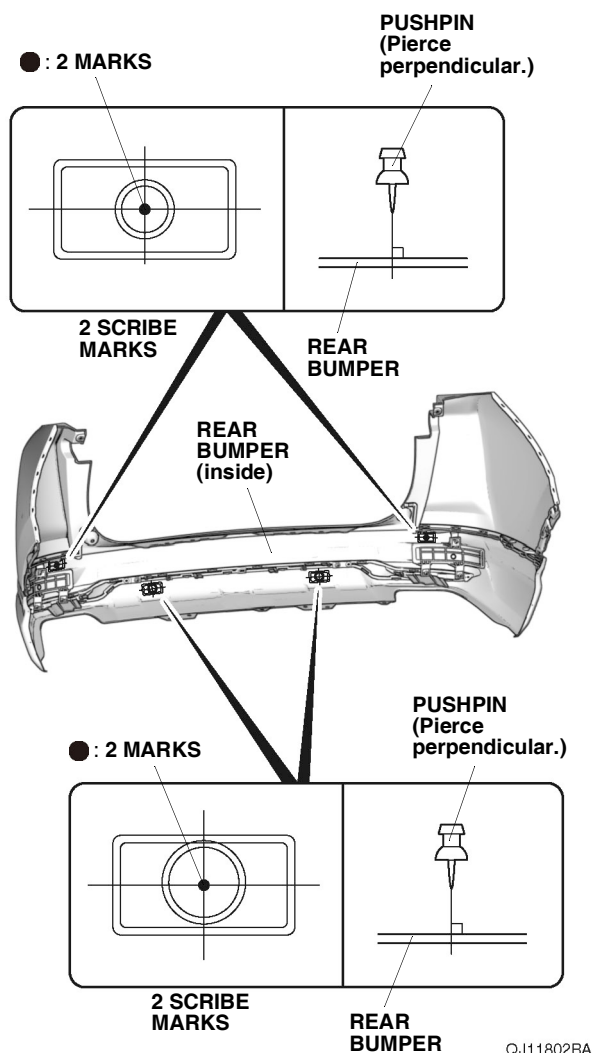
With Hands-Free Access Power Tailgate

133. Remove the Hands-Free Access unit.



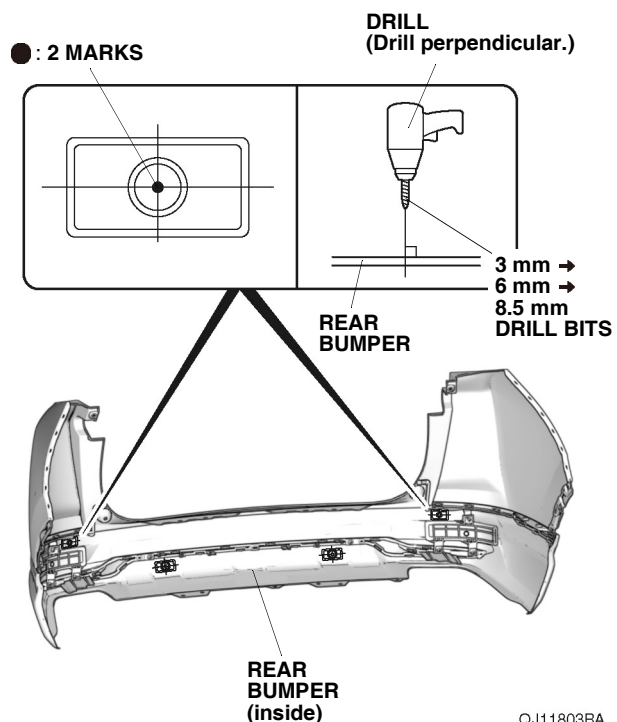
134. Mark the inside of the rear bumper.

- Locate the four scribe marks on the inside of the rear bumper.
 - Using a pushpin, pierce the rear bumper at the center of the four scribe marks.
- NOTE: Make sure to pierce the scribe marks perpendicular to the rear bumper.



135. While wearing eye protection, drill the two pierced marks to 8.5 mm from the inside of the rear bumper. First drill with a 3 mm drill bit, then follow with a 6 mm drill bit, and finish with an 8.5 mm drill bit.

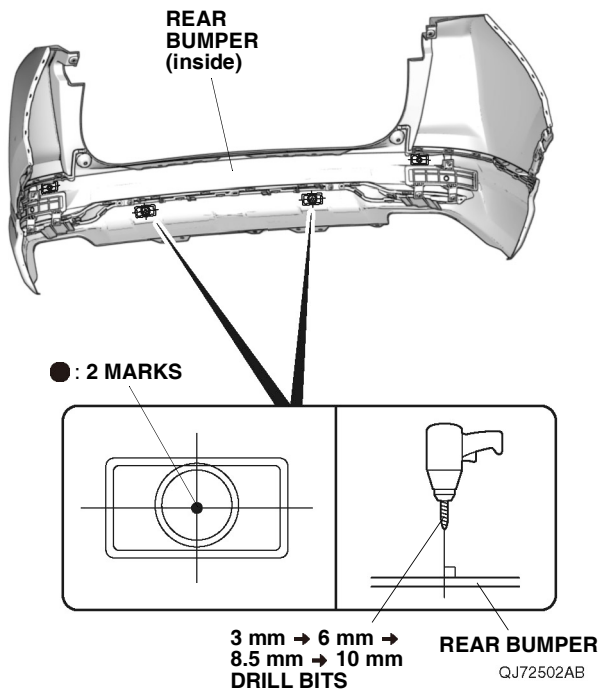
NOTE: Make sure to drill perpendicular to the rear bumper. Remove any burrs.



136. While wearing eye protection, drill the two inner center pierced marks to 10 mm from the inside of the rear bumper. First drill with a 3 mm drill bit, then follow with a 6 mm drill bit, followed by a 8.5 mm drill bit, and finish with a 10 mm drill bit.

NOTE:

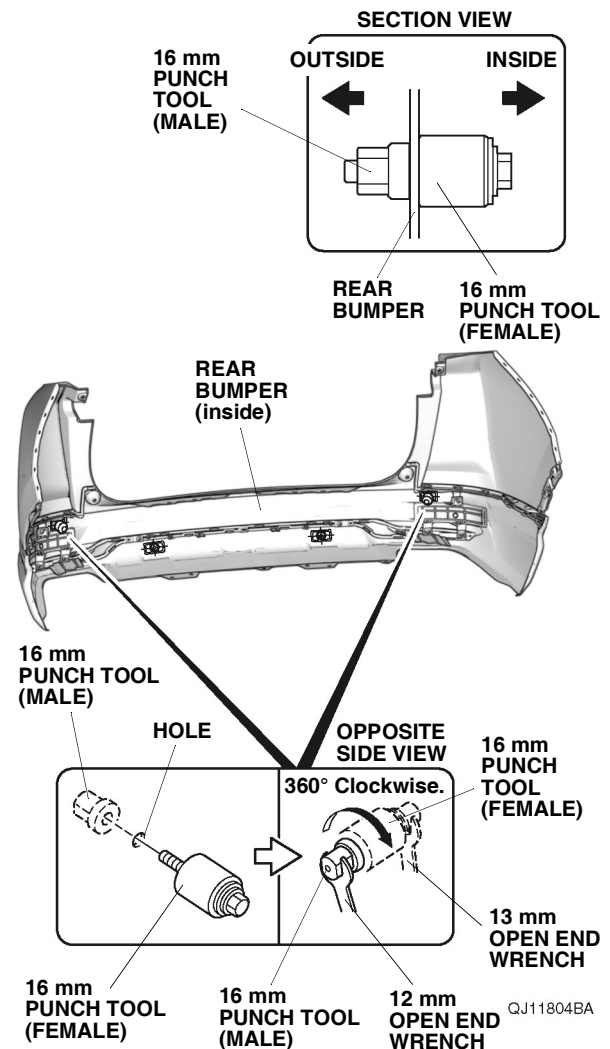
- Make sure to drill perpendicular to the rear bumper. Remove any burrs.
- Only drill the center two holes to 10 mm.



137. Thread a 16 mm punch tool (female) into the hole on the rear bumper. Then, install the 16 mm punch tool (male) onto the 16 mm punch tool (female). Holding the 16 mm punch tool (female) with a 13 mm open end wrench, turn the 16 mm punch tool (male) 360° clockwise with 12 mm open end wrench.

NOTE:

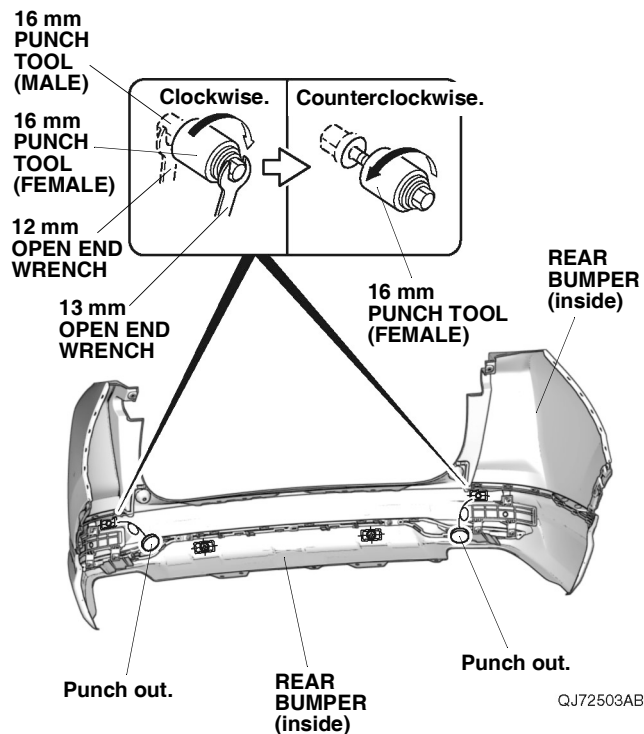
- With the punch tool snug against the bumper, make sure to rotate the male portion of the punch tool 360° clockwise.
- Always hold the punch tool perpendicular to the bumper while turning the wrenches.



138. Holding the 16 mm punch tool (male) with a 12 mm open end wrench, turn the 16 mm punch tool (female) clockwise with 13 mm open end wrench to punch out the rear bumper as shown.

NOTE:

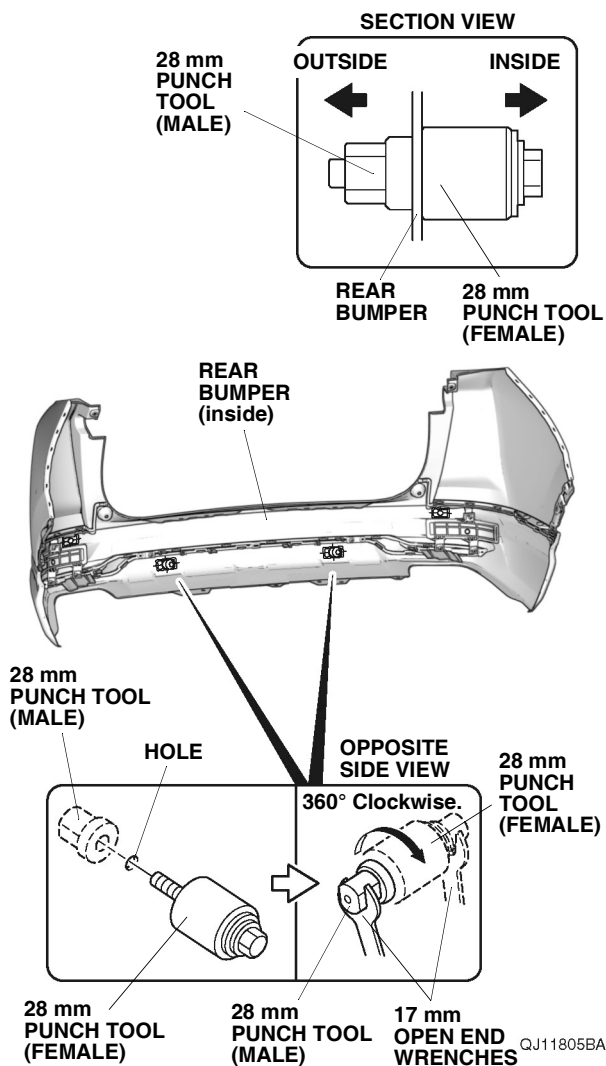
- Always hold the punch tool perpendicular to the bumper while turning the wrenches.
- Make sure to remove the punched out material after every hole.



139. Thread a 28 mm punch tool (female) into the hole on the rear bumper. Then, install the 28 mm punch tool (male) onto the 28 mm punch tool (female). Holding the 28 mm punch tool (female) with a 17 mm open end wrench, turn the 28 mm punch tool (male) 360° clockwise with 17 mm open end wrench.

NOTE:

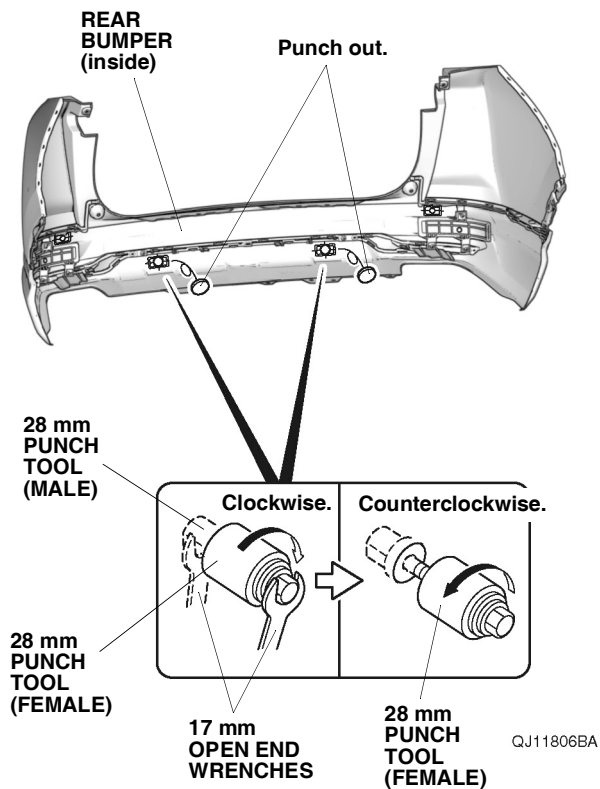
- With the punch tool snug against the bumper, make sure to rotate the male portion of the punch tool 360° clockwise.
- Always hold the punch tool perpendicular to the bumper while turning the wrenches.



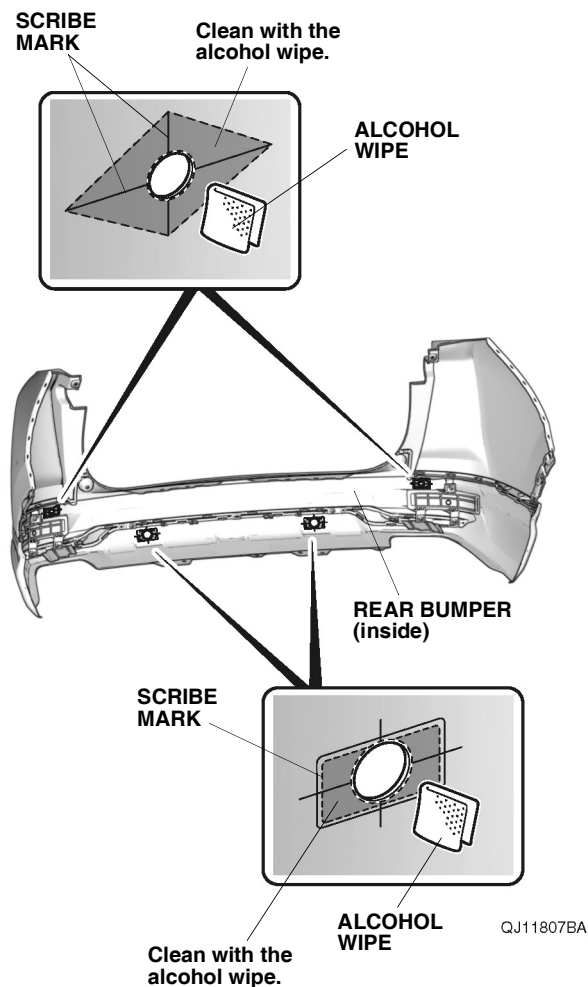
140. Holding the 28 mm punch tool (male) with a 17 mm open end wrench, turn the 28 mm punch tool (female) clockwise with 17 mm open end wrench to punch out the rear bumper as shown.

NOTE:

- Always hold the punch tool perpendicular to the bumper while turning the wrenches.
- Make sure to remove the punched out material after every hole.



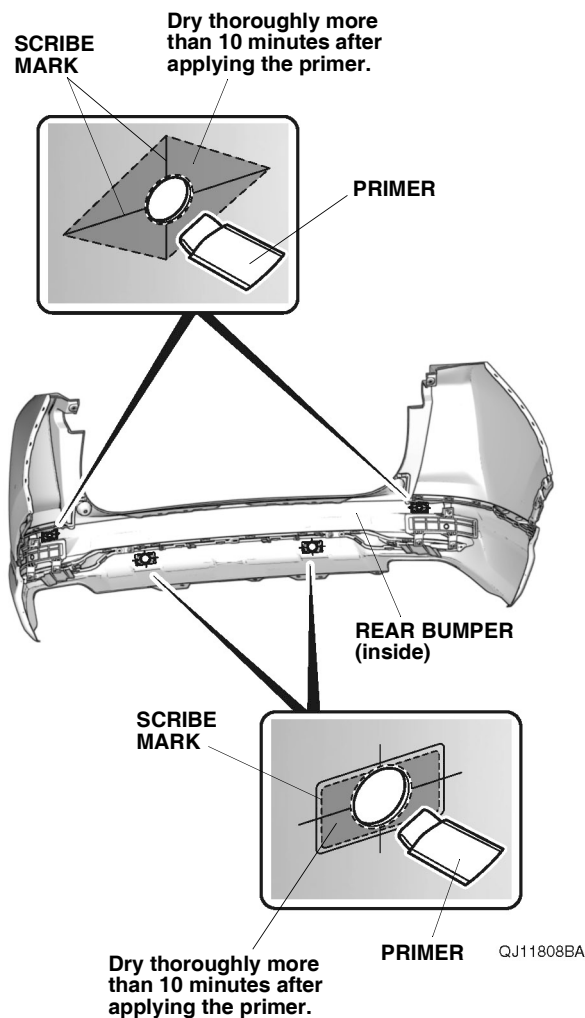
141. Using an alcohol wipe, thoroughly clean the rear bumper where the two retainers B, retainer C, and retainer D will attach.



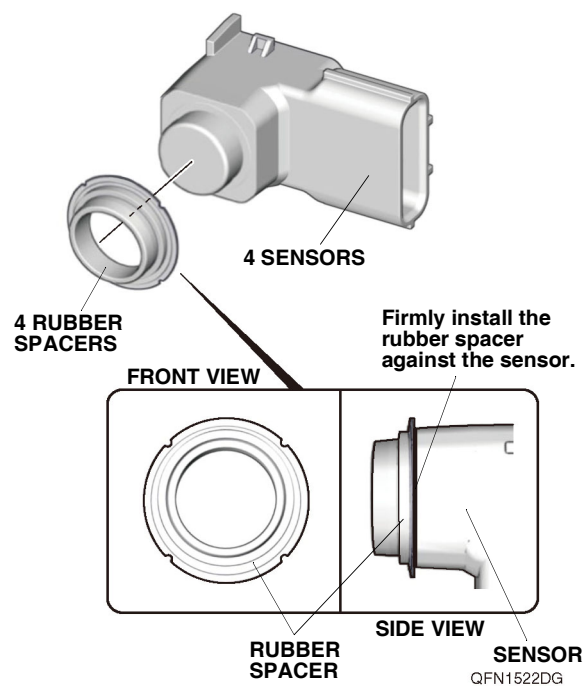
142. Apply the primer to the rear bumper.

NOTE:

- Apply the primer evenly.
- Be careful not to apply the primer anywhere except the indicated area.
- Do not apply additional primer.
- Apply the primer, and let it dry for at least 10 minutes.
- Attach the two retainers B, retainer C, and retainer D within 24 hours after applying the primer.

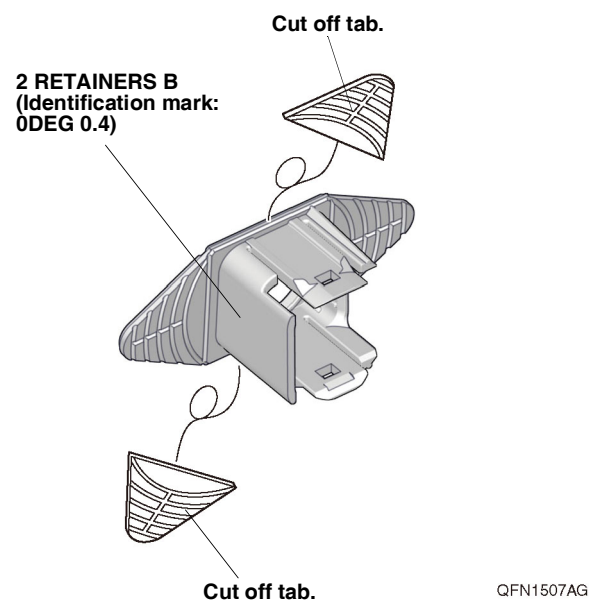


143. Install the four rubber spacers to the four sensors as shown.

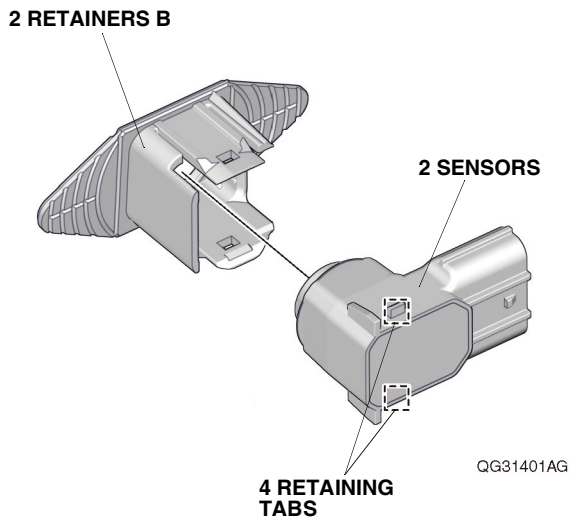


144. Using diagonal cutters, cut the tabs off the two retainers B as shown. Remove any burrs.

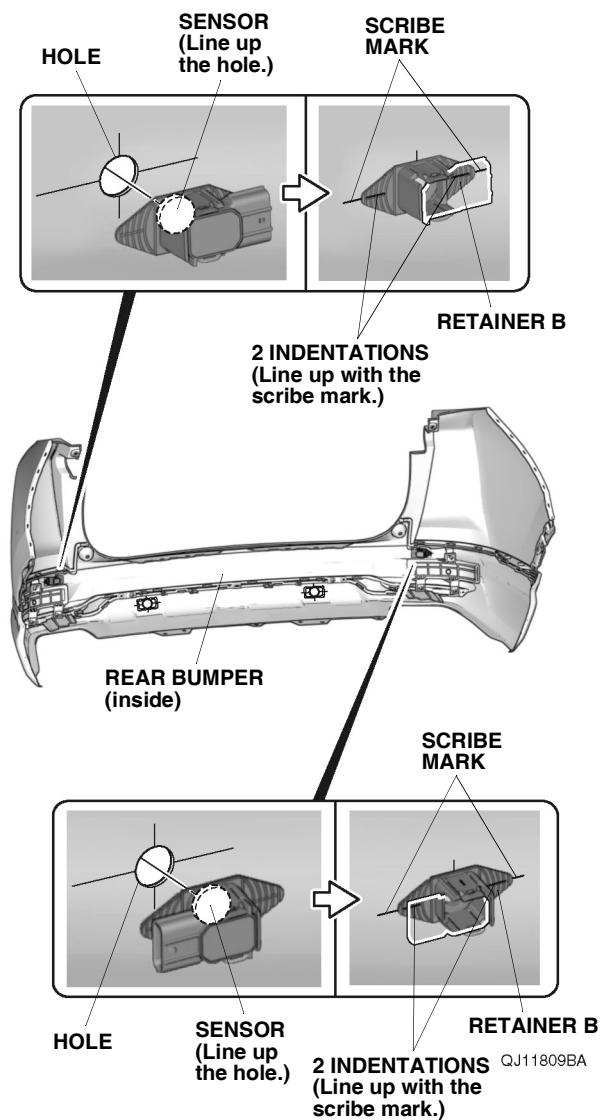
NOTE: Make sure to check the identification mark before installation.



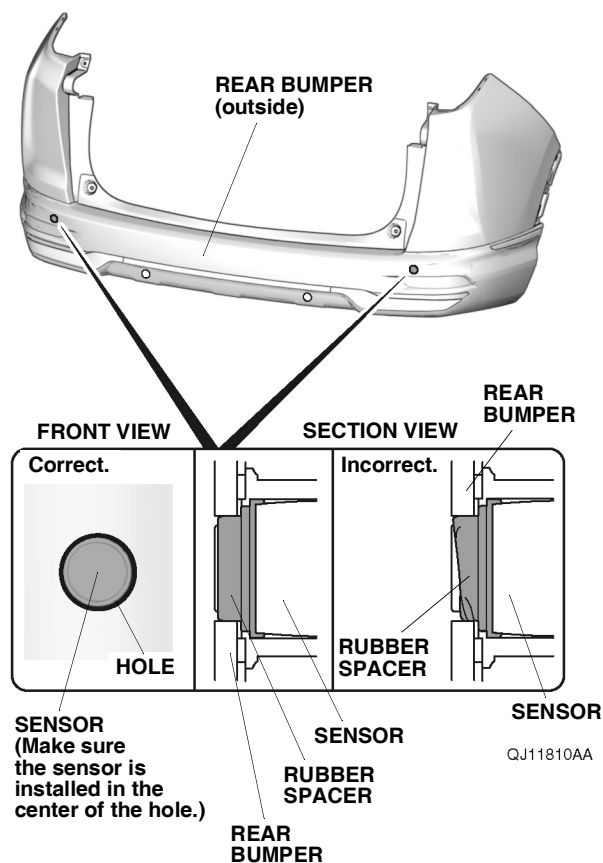
145. Install the two sensors to the two retainers B.



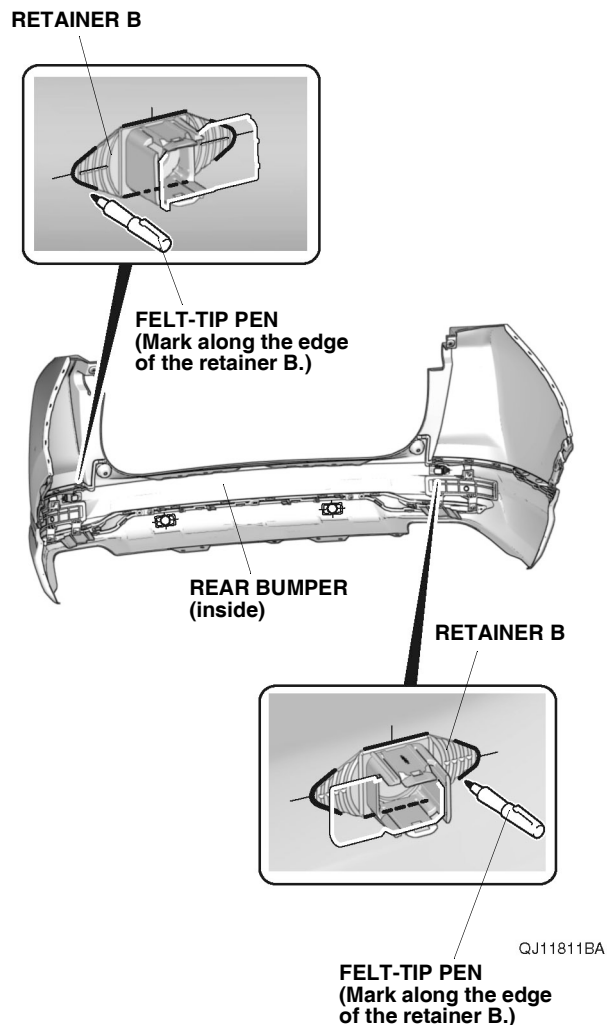
146. Line up with the two sensors and two retainers B to the rear bumper as shown.



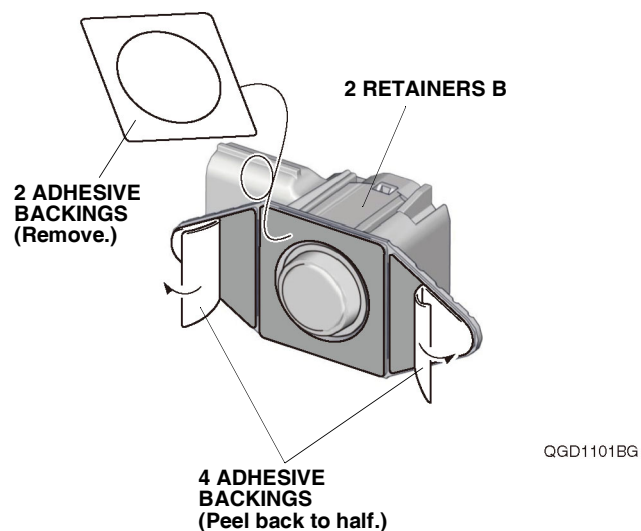
147. Make sure the two sensors are installed properly.



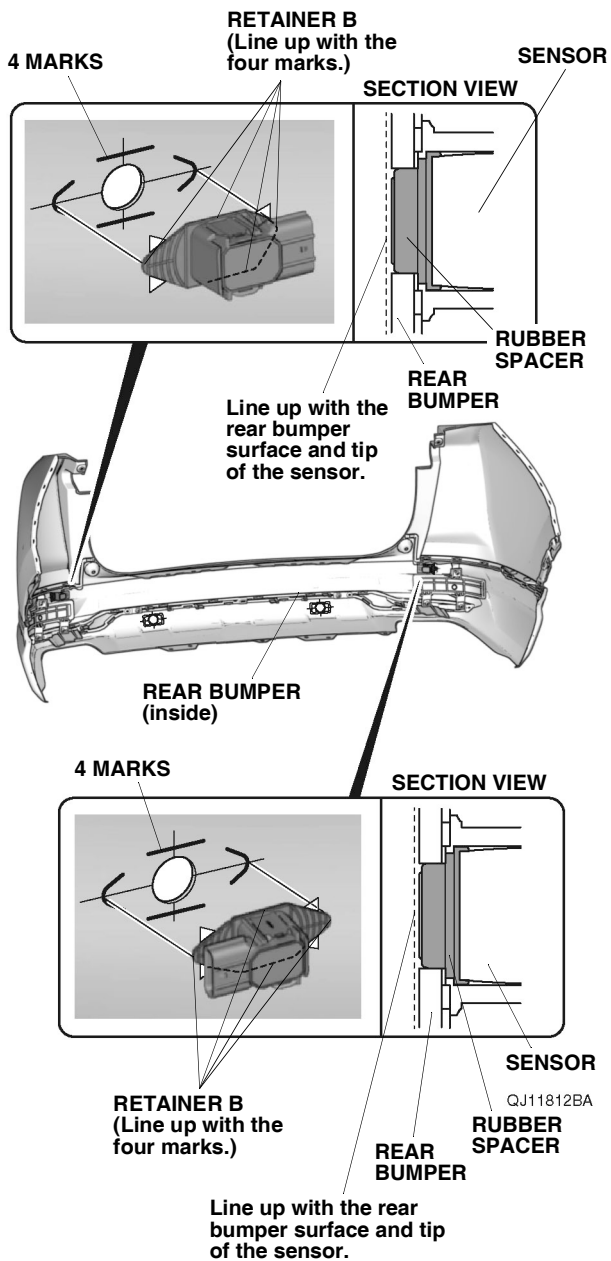
148. Using a felt-tip pen, mark the rear bumper as shown.



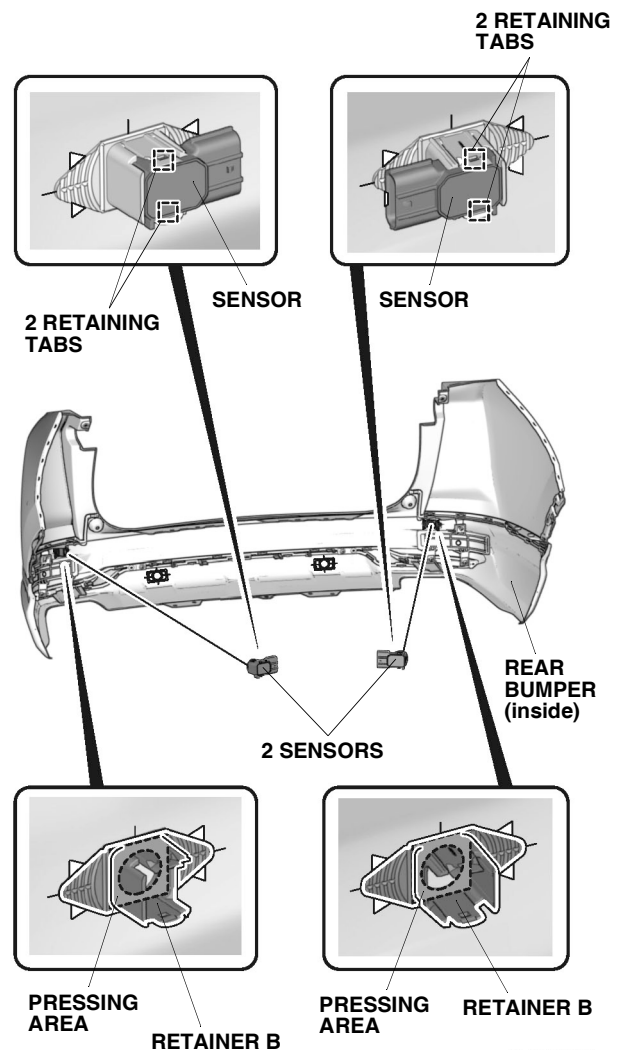
149. Remove the two adhesive backings and peel back the four adhesive backings as shown.



150. Attach the two retainers B to the rear bumper as shown.

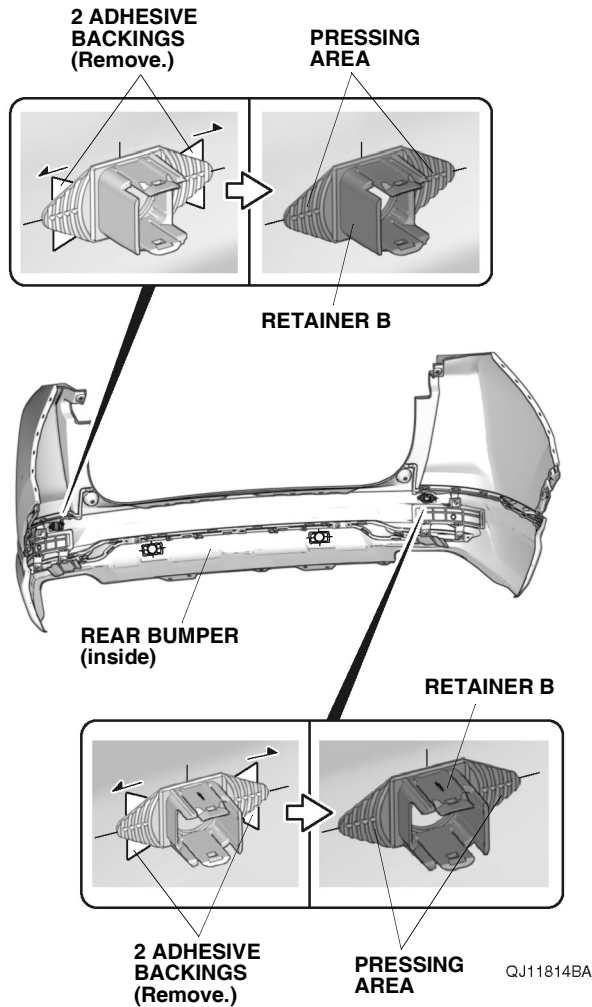


151. Remove the two sensors, and firmly press the two retainers B against the rear bumper.

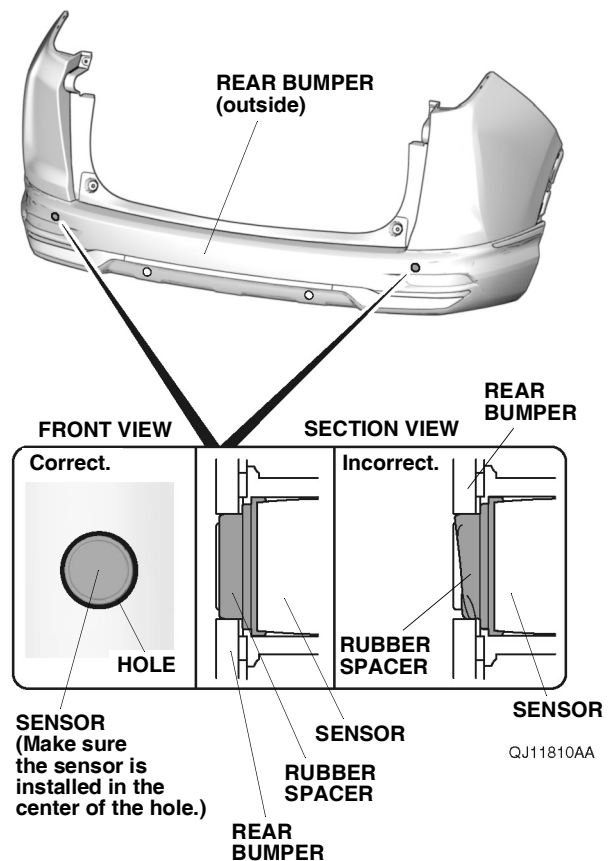


QJ11813BA

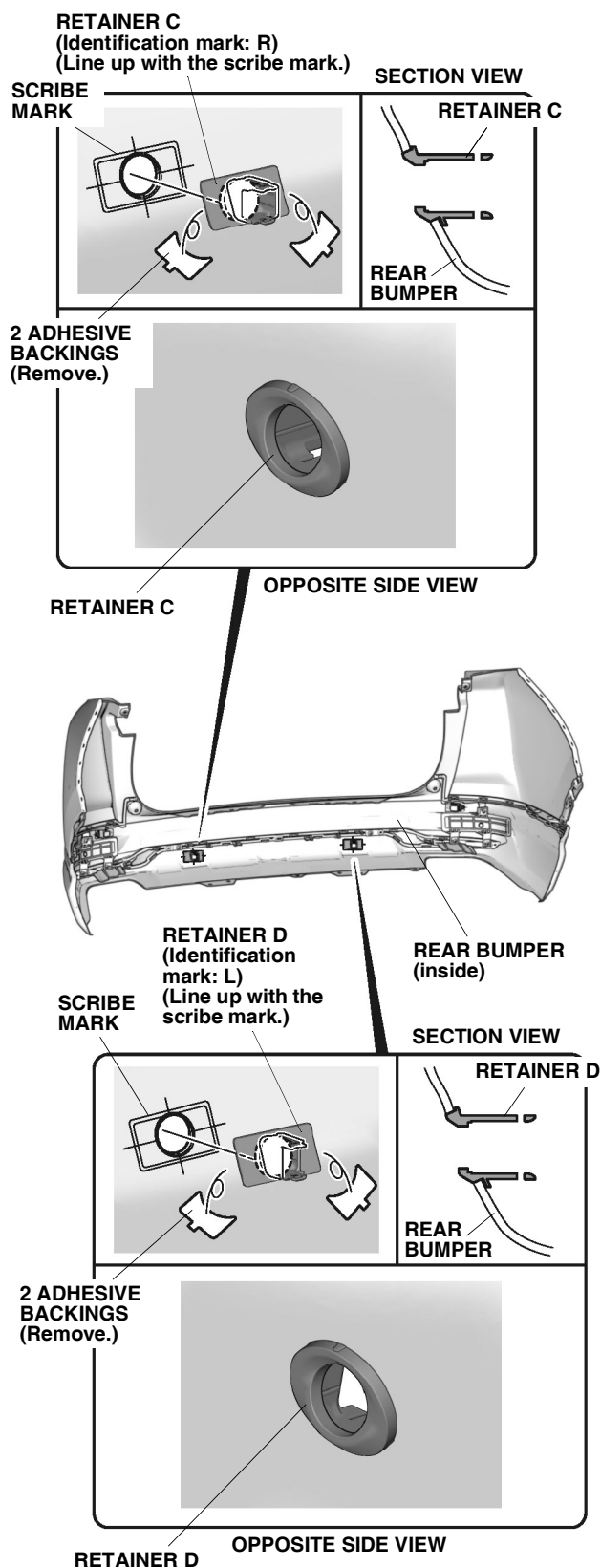
152. Remove the four adhesive backings, and firmly press the two retainers B against the rear bumper. Install the two sensors.



153. Make sure the two sensors are installed properly.

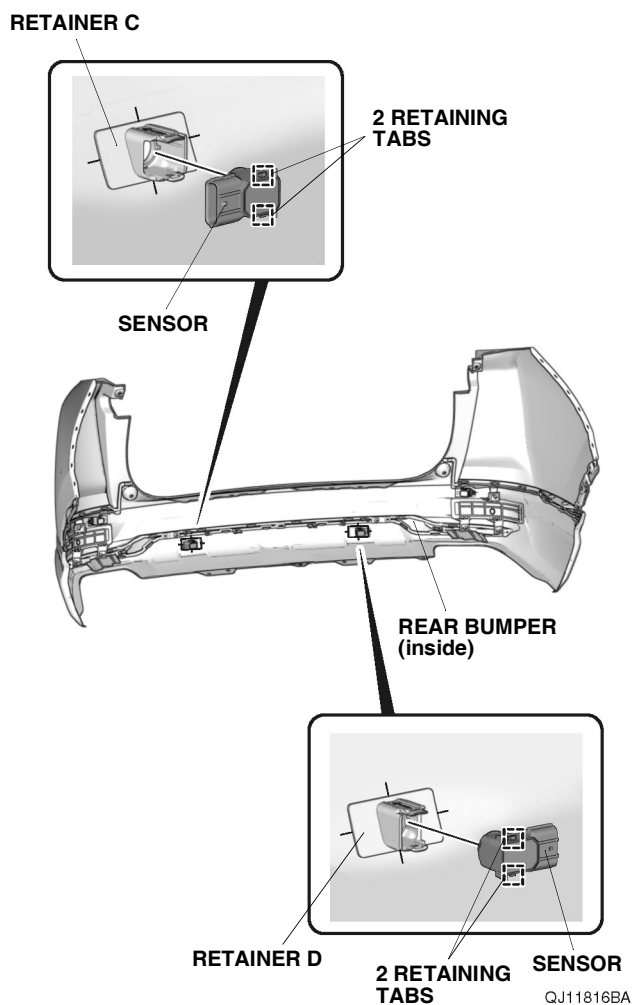


154. Remove the four adhesive backings from the retainer C and retainer D, and attach the retainer C and retainer D to the rear bumper as shown.
NOTE: Make sure the retainers are attached in the proper orientation.

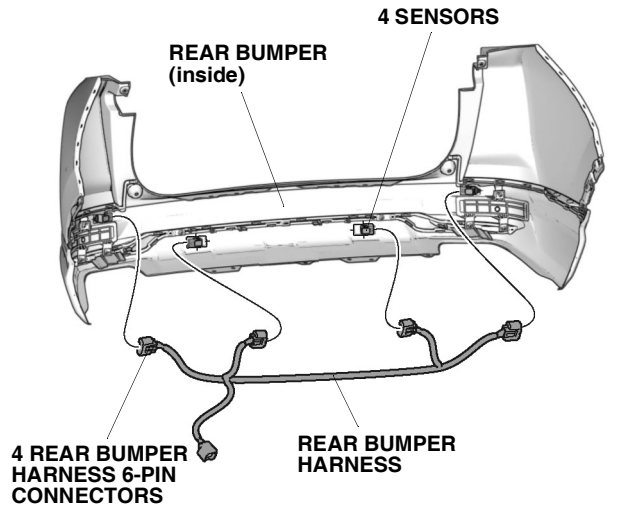


QJ11815BA

155. Install the two sensors to the retainer C and retainer D. If the vehicle is equipped with Hands-Free Access Power Tailgate, install the Hands-Free Access unit.

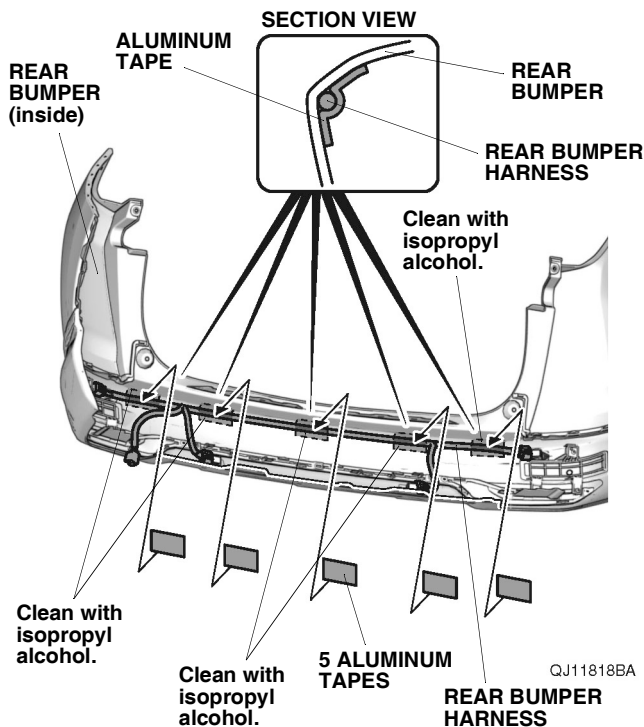


156. Plug the four rear bumper harness 6-pin connectors into the four sensors.



QJ11817BA

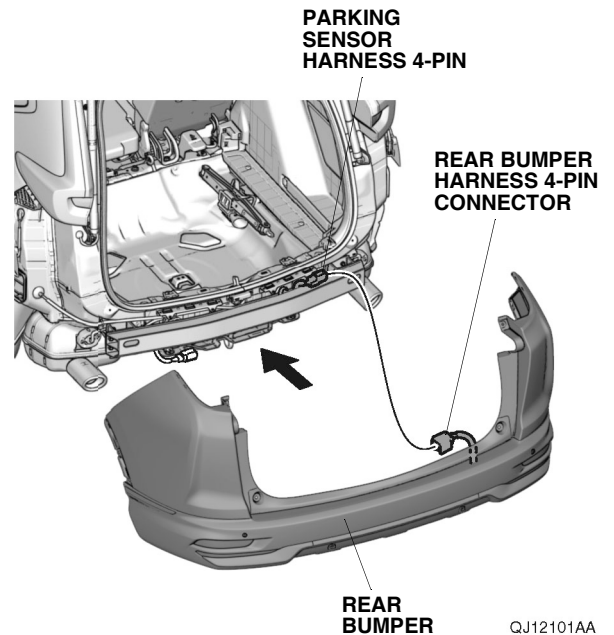
157. Using isopropyl alcohol on a shop towel, thoroughly clean the rear bumper where the aluminum tapes will attach.



QJ11818BA

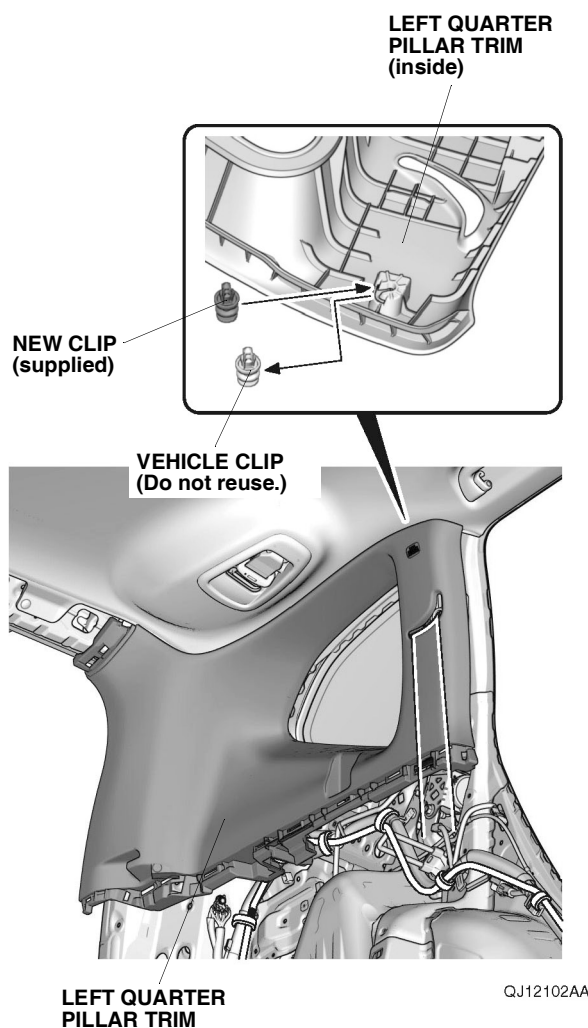
158. Secure the rear bumper harness to the rear bumper with five pieces of aluminum tape as shown.

159. With the help of an assistant, bring the rear bumper close to the vehicle, and plug the rear bumper harness 4-pin connector into the parking sensor harness 4-pin connector. Install the rear bumper.



QJ12101AA

160. Remove the vehicle clip, and install the new clip to the left quarter pillar trim.



161. Check the overlap between the headliner and the left quarter pillar trim.
NOTE: Check and adjust the overlap as described in the service information.

162. Install the left quarter pillar trim.

NOTE:

- Make sure the side curtain airbag is not tucked under the clip.
- Do not push the left quarter pillar trim excessively.

163. Check that all wire harnesses are routed properly and that all connectors are plugged in.
164. Install all removed parts.
165. Connect the negative cable to the battery.
166. Press and hold the audio unit power button for 2 seconds to restore the audio and navi (if equipped) system functions.
167. Set the clock on vehicles without navigation.
168. If necessary, restore the systems back to normal operation as described in the service information.

Initial Settings of the Parking Sensors

169. Turn the headlight switch to OFF.
170. Turn the engine switch to ON.
171. Press the parking sensor switch ten times in ten seconds.
172. Check that the indicator in the parking sensor switch flashes.
173. Turn the engine switch to OFF.
174. Turn the engine switch to ON while press the parking sensor switch. Hold the parking sensor switch for about ten seconds, and check that the buzzer beeps for 2 seconds.

Check the Operation of the Parking Sensors

NOTE:

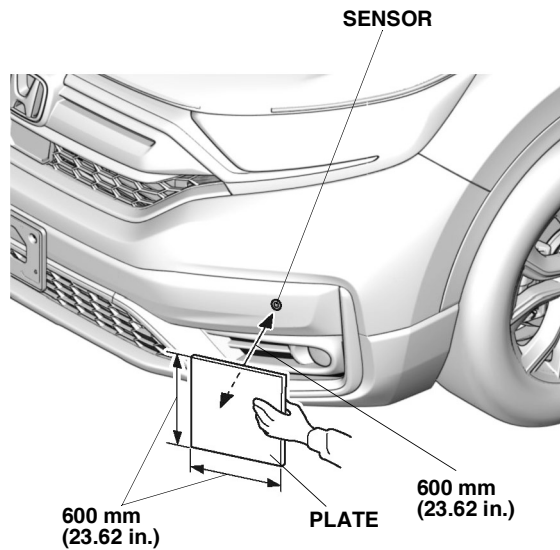
- Perform at a flat place.
 - Perform while press on the foot brake.
175. Turn the engine switch to ON.
176. Turn the parking sensor switch on and check that the indicator in the switch comes.
177. Release the parking brake, move the shift lever to R.
178. Bring a plate to each sensor and check that the buzzer beeps within the range indicated in the illustration (Perform operation check to all sensors).

NOTE:

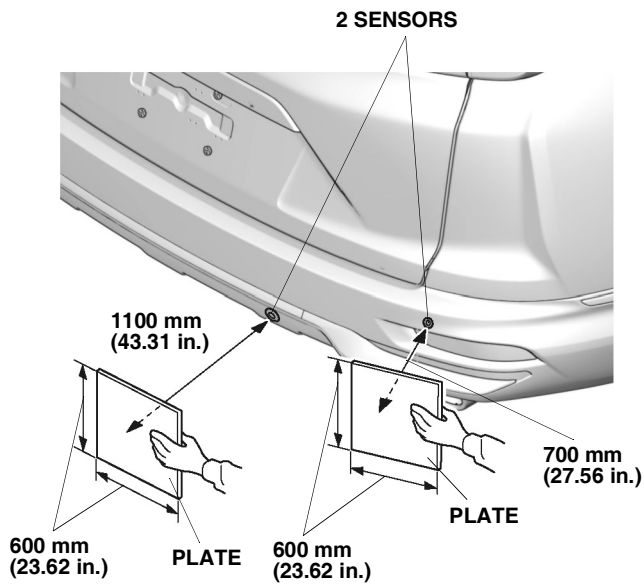
- Open all doors to hear the buzzer beeping well.
- If the buzzer beeps from the meter, the starting sounds will not ring.

179. Check that the parking sensors work properly as described in the accessory user's information manual in this kit.

NOTE: If the object position shown in the display differ from the actual position, repeat steps 169 through 174.



QJ12103AA



QJ12104AA