



INSTALLATION INSTRUCTIONS

Accessory
19" ALUMINUM WHEEL
 P/N 08W19-TLA-100

Application
2018 CR-V

Publications No.
VERSION 1
 Issue Date
OCT 2017

PARTS LIST

Aluminum wheel
 (The illustration may differ from the actual wheel.)



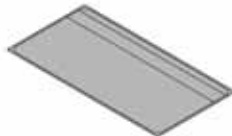
Wheel center cap
 (The illustration may differ from the actual center cap.)



Valve



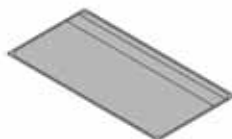
TPMS Information
 (Give this information to your customer.)



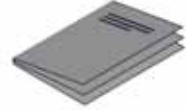
Tire pressure information label



Wheel cleaning Information
 (Give this information to your customer.)



Supplemental information
 (Give this information to your customer.)



TOOLS AND SUPPLIES REQUIRED

- Isopropyl alcohol
- Shop towel
- i*-HDS with MVCI or DST-*i*

SPECIFICATIONS

Rim size	19 x 7 1/2J (inset 45)	
Tire size	235/55R19 101H	
Bolt hole PCD	114.3 (5 holes)	
Tire pressure	Front	30 psi (210 kPa)
	Rear	30 psi (210 kPa)

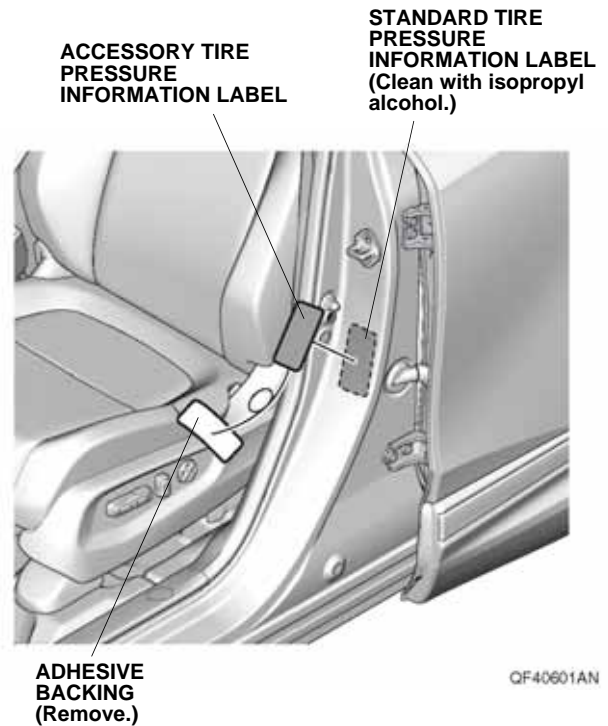
INSTALLATION

Customer Information: The information in this installation instruction is intended for use only by skilled technicians who have the proper tools, equipment, and training to correctly and safely add equipment to your vehicle. These procedures should not be attempted by “do-it-yourselfers.”

NOTE:

- The illustrations of the aluminum wheels are shown for reference purposes only.
- Install the correct size tire.
- Use a tire changer to install and remove the tires as described in the operation manual furnished with the tire changer. Do not use a tire lever to install and remove the tires as it may cause damage to the tire and aluminum wheel.
- The wheel nut torque is 108 N·m (11.0 kgf·m, 80 lbf·ft).
- This kit should be installed only if the ambient air temperature is 60°F (15°C) or above.
- To allow the adhesive to cure, do not wash the vehicle for 24 hours. Make sure the customer is aware of this.

1. Open the driver’s door. Using isopropyl alcohol on a shop towel, thoroughly clean the area where the accessory tire pressure information label will attach. Remove the adhesive backing from the accessory tire pressure information label, and attach the accessory tire pressure information label over the standard tire pressure information label as shown.



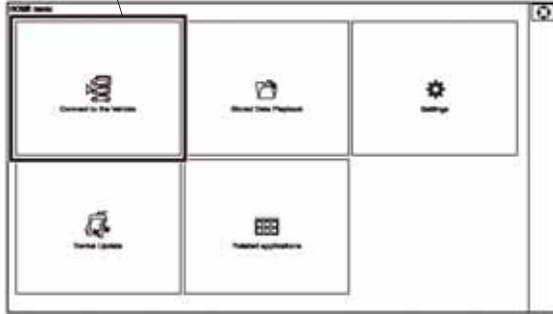
2. Attach the “Supplemental Information” page included in this kit into the owner’s guide as described on the “Important Information to Dealer” page.

Inch-up Tire Pressure Programming

NOTE: Make sure you are using the latest *i*-HDS version as described on SIS.

3. Connect the *i*-HDS to the data link connector, then turn the ignition to ON.

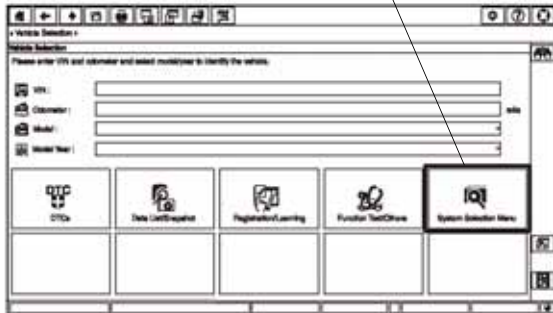
Select
Connect to the Vehicle.



QF40602AN

4. Start the Diagnostic System, select the **Connect to the Vehicle**.
5. Select the **System Selection Menu**.

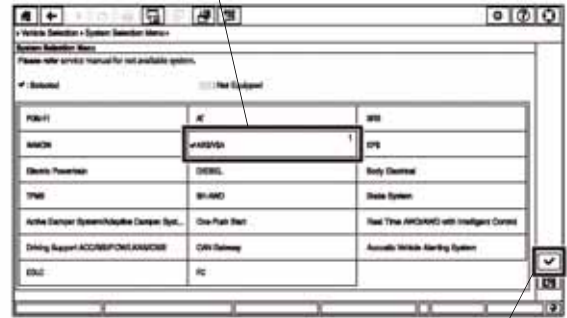
Select
System Selection Menu.



QF40603BN

6. Select the **ABS/VSA** and click the check button.

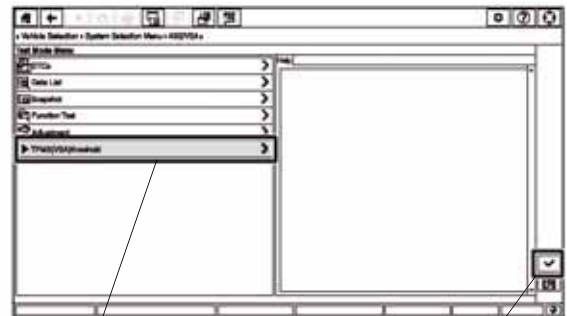
Select
ABS/VSA.



CHECK BUTTON

QF40604BN

7. Select the **TPMS (VSA) threshold** and click the check button.



Select
TPMS (VSA) threshold.

CHECK BUTTON

QF40605BN

8. Select the **YES**.



Select YES.

QF40606BN

10. Select the **19 inch** and click the check button.

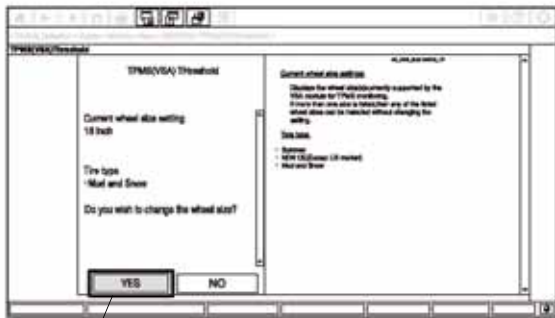


Select 19 inch.

CHECK BUTTON

QF40608BN

9. Select the **YES**.



Select YES.

QF40607BN

11. Select the **Mud and snow** and click the check button.



Select Mud and snow.

CHECK BUTTON

QF40609BN

12. The following message will display: **Turn the ignition switch off.** Then turn the ignition to OFF.



QF40610BN

13. The following message will display: **Turn the ignition switch on.** Then turn the ignition to ON.



QF40611BN

14. Click the check button.



CHECK BUTTON

QF40612BN

15. Disconnect the *i*-HDS from the data link connector.
16. Do the TPMS calibration according to the instructions in the service information (TPMS Calibration).
17. After finishing the work, write tire size, tire pressure, *i*-HDS version, dealer name, technician's signature, and date in "Service History Page for Honda Accessory Alloy Wheels" page included in this kit.
- Be sure to explain the contents of the "Supplemental Information" when delivering the vehicle to your customer.
 - Be sure to give the TPMS information and wheel cleaning information to your customer.

Deflation Warning System Threshold Rewriting

- If the 18-inch wheels are to be installed back on the vehicle, you must change the threshold value with the *i*-HDS; refer to steps 3 to 16.
- For step 10, select the 18-inch.

NOTE: If 18-inch is displayed on the current wheel size settings, go to step 15.

- After finishing the work, write tire size, tire pressure, *i*-HDS version, dealer name, technician's signature, and date in "Service History Page for Honda Accessory Alloy Wheels" page.