



# CR-V

## Cargo Tray User's Information Manual

## Introduction

---

**Thank you for purchasing this Honda accessory.**

**Please read this manual carefully before using the cargo tray, and keep this manual in the glove box for future reference.**

This product is designed to be used exclusively on a Honda CR-V. Honda is not responsible if the product is used for anything other than its intended purpose.

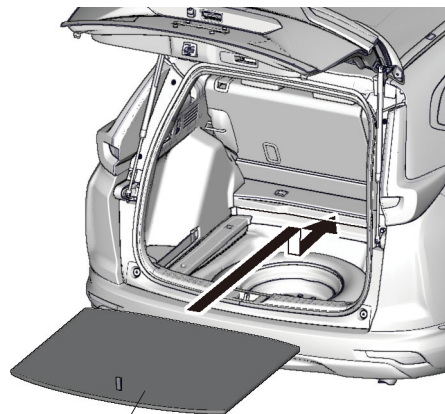
This manual should be considered a permanent part of the vehicle. It should remain with the vehicle at all times and stay with the vehicle when sold.

### **SYMBOLS**

As you read this manual, you will find information that is preceded by a **NOTICE** symbol.

This information is intended to help you avoid damage to your vehicle, other property, or the environment.

1. Pull the cargo floor board toward you until it disengages from the upper support.

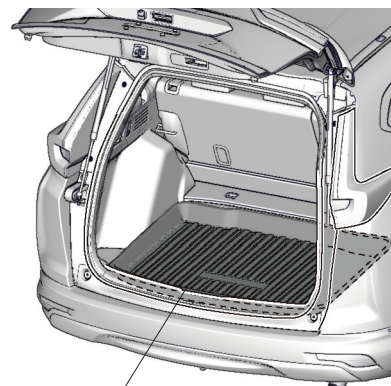


**CARGO FLOOR  
BOARD**

QF225010N

2. Push the far end of the lid down to the bottom of the under-floor storage area, then lower the other end.

3. Place the cargo tray on the cargo floor board.



**CARGO TRAY**

QF225020N

## Storing the Cargo Tray

### NOTICE

Do not place articles on the cargo tray in the storing position.

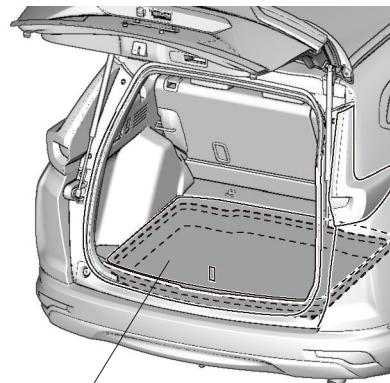
1. Remove the cargo floor board. Place the cargo tray in the cargo area.



QF225030N

**CARGO TRAY**

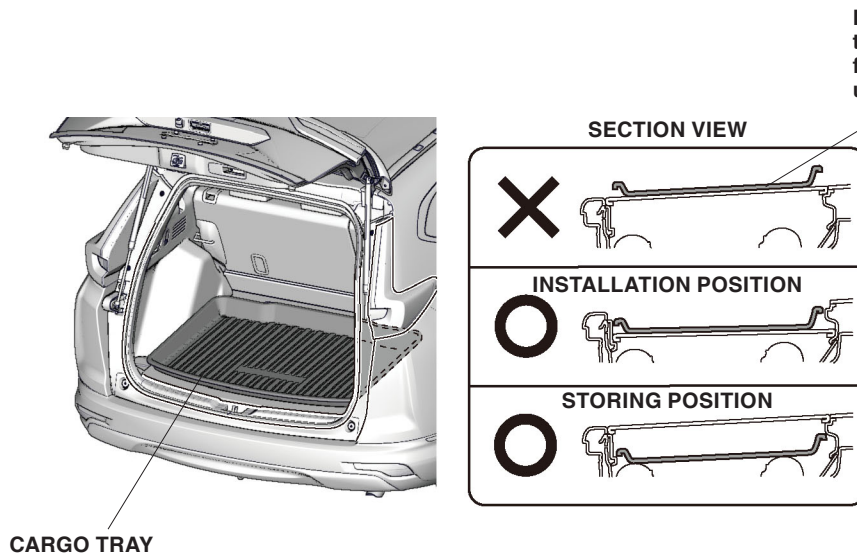
2. Install the cargo floor board into the upper position over the cargo tray.



QF225040N

**CARGO FLOOR  
BOARD**

To prevent the cargo tray from sliding, do not place the cargo tray on top of the cargo floor board when it's in the upper position.



QF225050N

## Memo

---



