



## INSTALLATION INSTRUCTIONS

Accessory

ALL-SEASON MATS

Application

2022 CIVIC

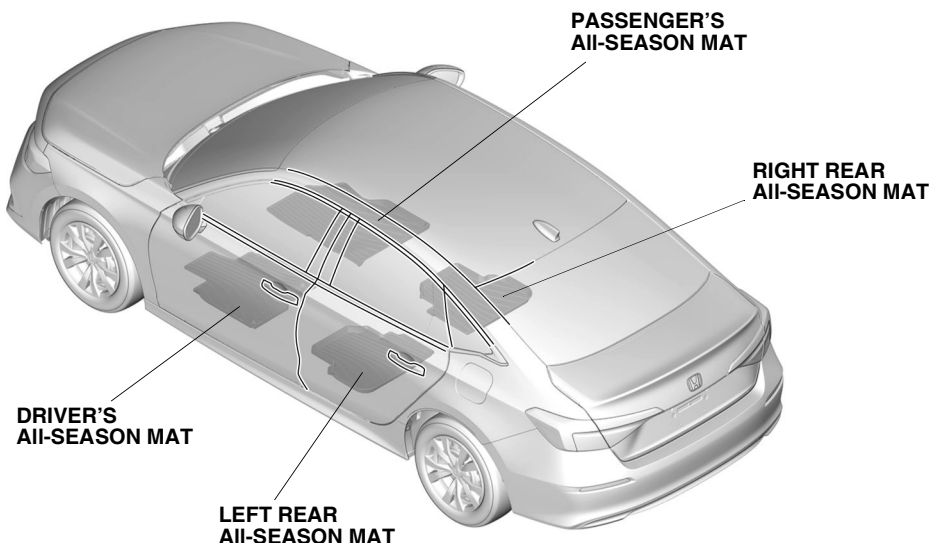
Publications No.

All

Issue Date

JUN 2021

## GENERAL VIEW



QK40401AU

## FOR YOUR SAFETY (Read carefully.)

### Warning Symbols

**Safety:** Your safety, and the safety of others, is important. To help you make informed decisions about service procedures, we have provided safety messages where appropriate. Of course, it is not practical or possible to warn you about all the hazards associated with servicing a vehicle - you must use your own good judgment.

You will find important safety messages preceded by one of following symbols:

\*All symbols are not used in all installation instructions.



**DANGER**

You will be killed or seriously hurt if you do not follow the instructions.



**WARNING**

You can be killed or seriously hurt if you do not follow the instructions.



**CAUTION**

You can be hurt if you do not follow the instructions.

**NOTICE**

Gives advice to prevent damage to the product, vehicle, the environment or other property.

**NOTE**

Gives helpful information or instructions to be followed when installing this product.



Indicates a prohibited action.

## Procedure and Location Icons

These icons indicate the work location and the worker's point of view.

\*All icons are not used in all installation instructions.



The location on the vehicle.



The location in the vehicle.  
(instrument panel.)



Wear eye protection.



Wear heavy gloves.



Use an assistant.



Place the part on a blanket.



Work perpendicular.



Remove any burrs.



Use touch-up paint and allow to dry.



Tighten to the specified torque.



Apply firm pressure while rolling, especially at the ends, to set the adhesive.



Press firmly.



Clean with isopropyl alcohol.



Return the original part to the customer.  
(Do not reuse.)

## Safety: General

- Be careful not to damage the vehicle or the parts.
- The illustrations may differ slightly from the actual accessory.

## Safety: Accessory

- Always use the parts and tools specified in the installation instructions.
- When replacing the all-season mat, use the factory designed floor mats compatible with the anchors.

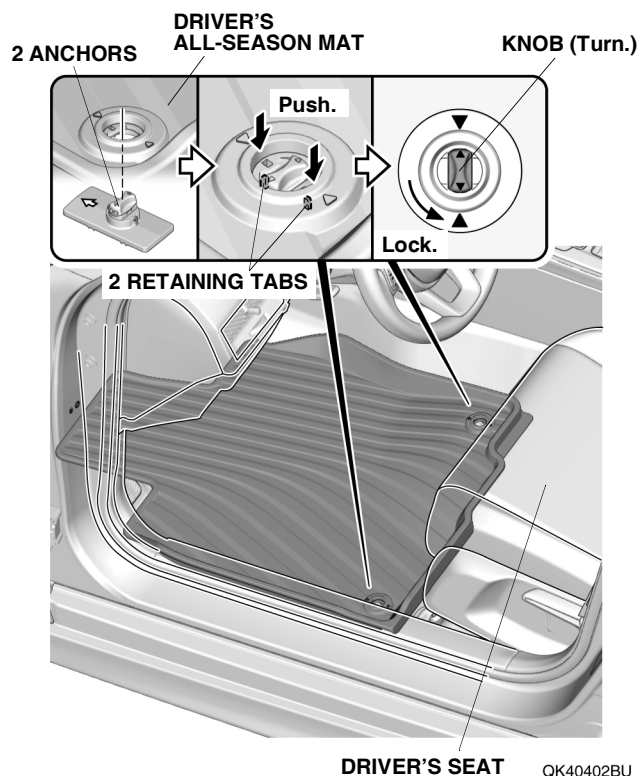
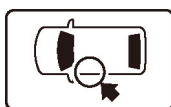
## PARTS LIST

### All-season Mats Kit (P/N 08P17-T20-100)

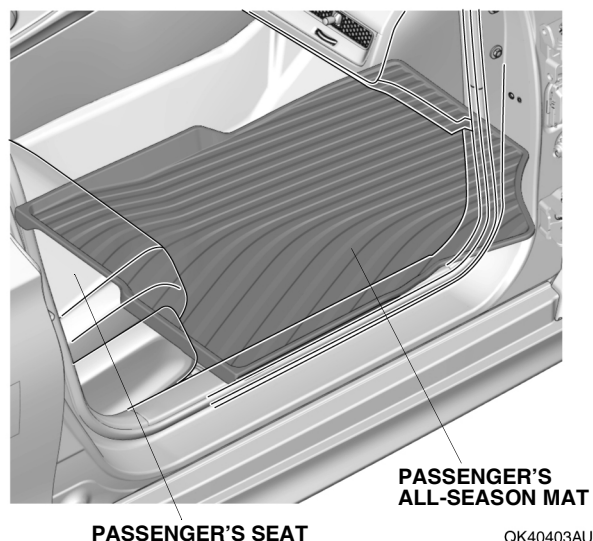
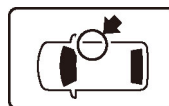
Driver's all-season mat	Passenger's all-season mat	Left rear all-season mat	Right rear all-season mat

## INSTALLATION

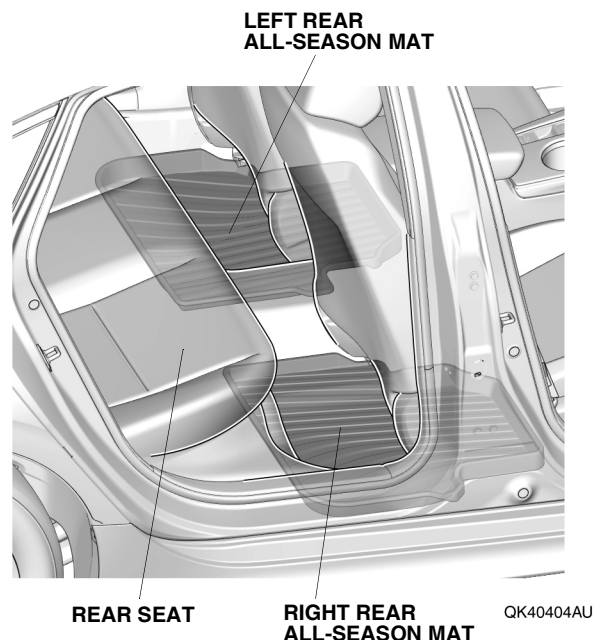
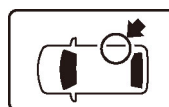
1. Remove the standard floor mats as described in the vehicle owner's manual.
2. Install the driver's all-season mat.



3. Install the passenger's all-season mat.



4. Install the left and right rear all-season mats.



5. Check that all parts are installed properly.