



INSTALLATION INSTRUCTIONS

Accessory	Application	Publications No.
19" ALUMINUM WHEEL P/N 08W19-TEA-101	2020 CIVIC	VERSION 2
		Issue Date AUG 2019

PARTS LIST

Aluminum wheel
(The illustration may differ from the actual wheel.)



Wheel center cap
(The illustration may differ from the actual center cap.)



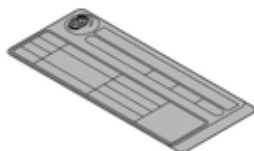
Valve



TPMS information
(Make sure your customer receives this information.)
(May not be used)



Tire pressure information label
(EA19A: For 5 door models)
(May not be used)



Tire pressure information label
(BA19A: For 2 and 4 door models without spare tire)
(May not be used)



Tire pressure information label
(BA19B: For 2 and 4 door models with spare tire)
(May not be used)



Wheel cleaning information
(Make sure your customer receives this information.)



Supplemental Information
(Make sure your customer receives this information.)



TOOLS AND SUPPLIES REQUIRED

- 19 mm Socket
- Torque wrench
- Isopropyl alcohol
- Shop towel
- HDS and MVCI

SPECIFICATIONS

Rim size		19 x 8J (inset 55)	
Tire size		235/35R19 91Y	
Bolt hole PCD		114.3 (5 holes)	
Tire pressure	5 DOOR	Front	39 psi (270 kPa)
		Rear	39 psi (270 kPa)
	2 DOOR AND 4 DOOR	Front	35 psi (240 kPa)
		Rear	35 psi (240 kPa)

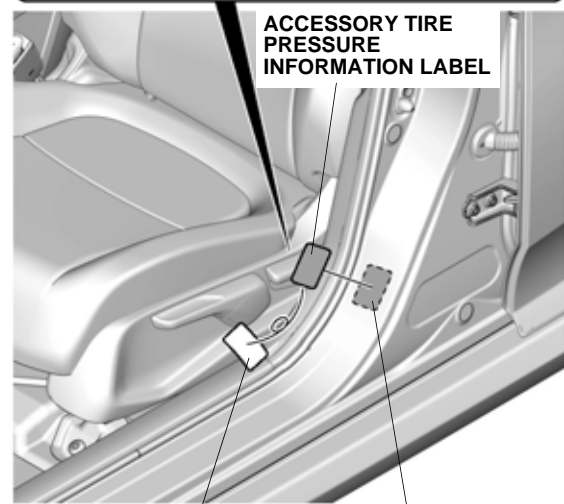
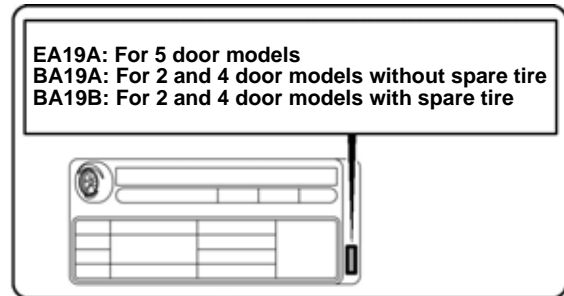
INSTALLATION

Customer Information: The information in this installation instruction is intended for use only by skilled technicians who have the proper tools, equipment, and training to correctly and safely add equipment to your vehicle. These procedures should not be attempted by “do-it-yourselfers.”

NOTE:

- The illustrations of the aluminum wheels are shown for reference purposes only.
- Install the correct size tire.
- Use a tire changer to install and remove the tires as described in the operation manual furnished with the tire changer. Do not use a tire lever to install and remove the tires as it may cause damage to the tire and aluminum wheel.
- The wheel nut torque is 80 lb-ft (108 N·m).
- This kit should be installed only if the ambient air temperature is 60°F (15°C) or above.
- To allow the tire and loading information label adhesive to cure, do not wash the vehicle for 24 hours. Make sure your customer is aware of this.

1. Open the driver's door. Using isopropyl alcohol on a shop towel, thoroughly clean the area where the tire pressure information label will attach. Remove the adhesive backing from the tire pressure information label, and attach it over the standard tire pressure information label as shown.



ADHESIVE BACKING
(Remove.)

STANDARD TIRE PRESSURE
INFORMATION LABEL
(Clean with isopropyl
alcohol.) QG50301AT

2. Attach the Supplemental Information page included in this kit into the owner's guide as described on the Important Information to Dealer page.

Inch-up Tire Pressure Programming

3. Connect the HDS/MVCI to the data link connector, then turn the ignition to **ON**.
4. Start the **Honda Diagnostic System**.
5. Select **Connect to the Vehicle**.
6. Confirm the interface device and click the check button.
7. Enter the vehicle details and click the check button.
8. Select **Honda Systems** and click the check button.
9. Select **ABS/TCS/VSA** and click the check button.
10. Select **TPMS (VSA) threshold** and click the check button.
11. Select **YES** to continue.
12. Select **YES** to change the wheel size.
13. Select **19 inch** and **Summer** (2 and 4 door models) or **Mud and Snow** (5 door models), and click the check button.
14. Turn the ignition switch to **OFF**.
15. The following message will display: **Turn the ignition switch to ON**.
Then turn the ignition switch to **ON**.
16. Check the values and click the check button.
17. Disconnect the HDS/MVCI from the data link connector.
18. Do the TPMS calibration according to the instructions in the service information (TPMS Calibration).
19. After finishing the work, write the tire size, tire pressure, HDS version, dealer name, technician's signature, and date in the Service History Page for Honda Accessory Alloy Wheels page included in this kit.
 - Make sure your customer understands the contents of the Supplemental Information when delivering the vehicle.
 - Make sure you give the TPMS information and wheel cleaning information to your customer.

Deflation Warning System Threshold Rewriting

- If the 18-inch wheels are to be installed back on the vehicle, you must change the threshold value with the HDS; refer to steps 3 through 19.
- For step 13, select the **18-inch**, and **Summer** (235/40ZR18 95Y) or **Mud and Snow** (235/40R18 91W). Attach the standard tire pressure information label over the old label in the driver's door jamb.

NOTE: If 18-inch is displayed on the current wheel size settings, go to step 17.

- After finishing the work, write tire size, tire pressure, HDS version, dealer name, technician's signature, and date in Service History Page for Honda Accessory Alloy Wheels page.