

# Germain Honda of College Hills



## INSTALLATION INSTRUCTIONS

### Accessory

ALL-SEASON FLOOR MATS

### Application

2023 ACCORD  
MODEL SERIES

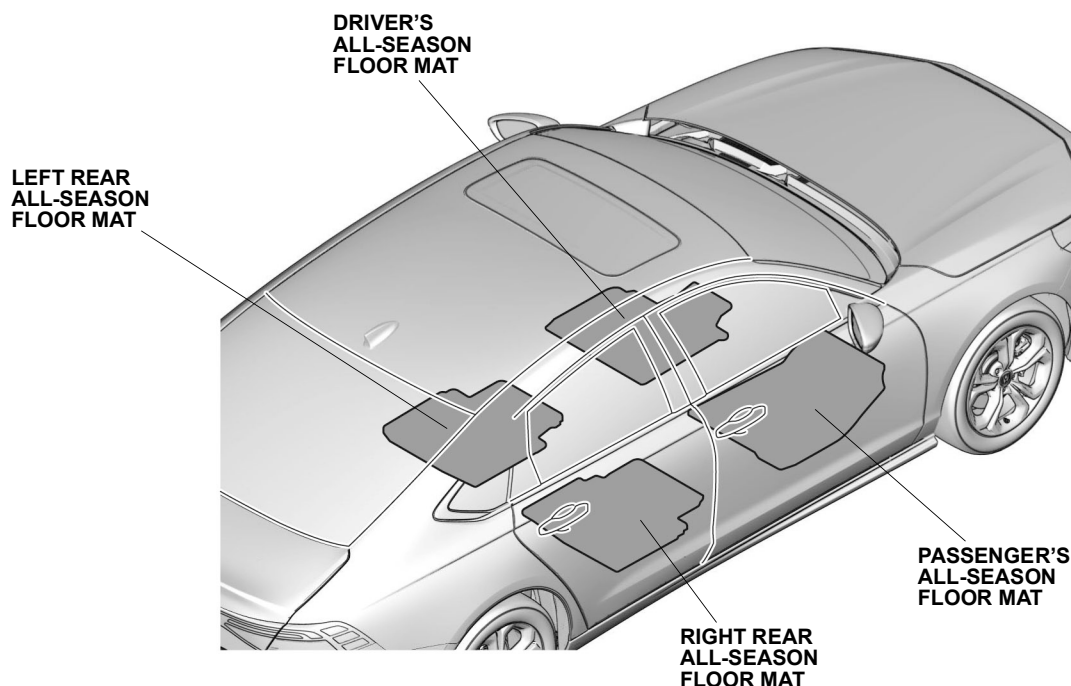
### Publications No.

VERSION 1

### Issue Date

DEC 2022

## GENERAL VIEW



QM30201AG

## FOR YOUR SAFETY (Read carefully.)

### Warning Symbols

**Safety:** Your safety, and the safety of others, is important. To help you make informed decisions about service procedures, we have provided safety messages where appropriate. Of course, it is not practical or possible to warn you about all the hazards associated with servicing a vehicle - you must use your own good judgment.

You will find important safety messages preceded by one of the following symbols:

\*All symbols are not used in all installation instructions.

**⚠ DANGER**

You will be killed or seriously hurt if you do not follow the instructions.

**⚠ WARNING**

You can be killed or seriously hurt if you do not follow the instructions.

**⚠ CAUTION**

You can be hurt if you do not follow the instructions.

**NOTICE**

Gives advice to prevent damage to the product, vehicle, the environment or other property.

**NOTE**

Gives helpful information or instructions to be followed when installing this product.



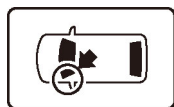
Indicates a prohibited action.

# Germain Honda of College Hills

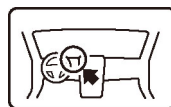
## Procedure and Location Icons

These icons indicate the work location and the worker's point of view.

\*All icons are not used in all installation instructions.



The location on the vehicle.



The location in the vehicle.  
(Instrument panel.)



Wear eye protection.



Wear heavy gloves.



Use an assistant.



Place the part on a blanket.



Work perpendicular.



Remove any burrs.



Use touch-up paint and allow to dry.



Tighten to the specified torque.



Apply firm pressure while rolling, especially at the ends, to set the adhesive.



Press firmly.



Clean with isopropyl alcohol.



Return the original part to the customer.  
(Do not reuse.)

## Safety: General

- Be careful not to damage the vehicle or the parts.
- The illustrations may differ slightly from the actual accessory.

## Safety: Accessory

- Always use the parts and tools specified in the installation instructions.
- When replacing the all-season floor mat, use the factory designed all-season floor mats compatible with the anchors.
- Do not put an additional floor mat on top of the anchored floor mat. It may slide forward and possibly interfere with the pedals.

## PARTS LIST

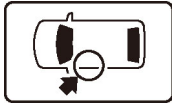
### All-season Floor Mats Kit (P/N 08P17-30A-100)

Driver's all-season floor mat	Passenger's all-season floor mat	Left rear all-season floor mat	Right rear all-season floor mat

# Germain Honda of College Hills

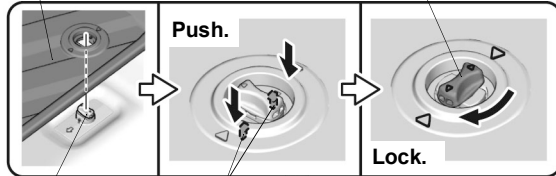
## INSTALLATION

1. Remove the standard floor mats as described in the vehicle owner's manual.
2. Install the driver's all-season floor mat.



**DRIVER'S  
ALL-SEASON  
FLOOR MAT**

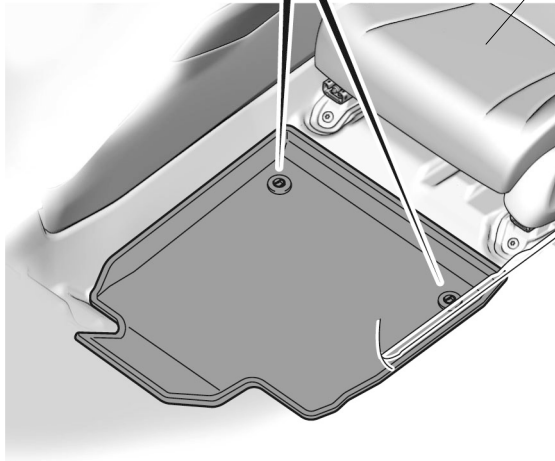
**KNOB  
(Turn.)**



**2 ANCHORS**

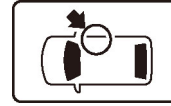
**2 RETAINING  
TABS**

**DRIVER'S  
SEAT**



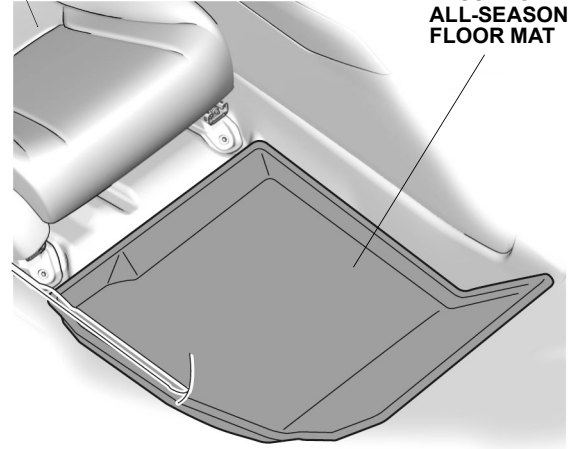
QM30202AG

3. Install the passenger's all-season floor mat.



**PASSENGER'S  
SEAT**

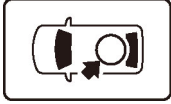
**PASSENGER'S  
ALL-SEASON  
FLOOR MAT**



QM30203AG

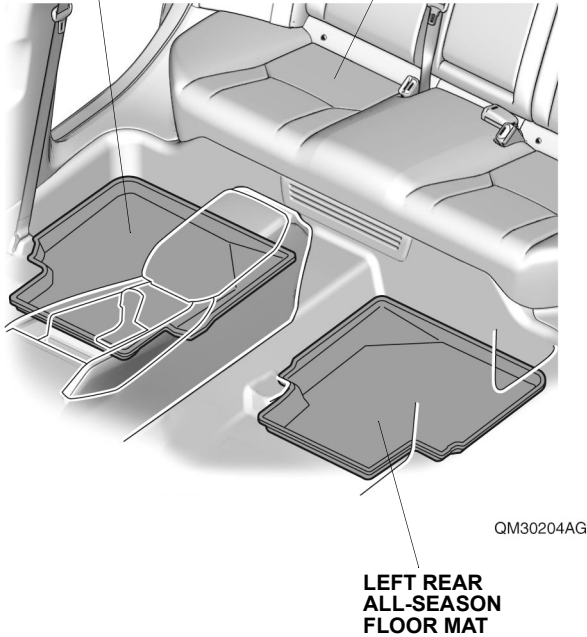
# Germain Honda of College Hills

4. Install the left and right rear all-season floor mats.



**RIGHT REAR  
ALL-SEASON  
FLOOR MAT**

**REAR SEATS**



5. Check that all parts are installed properly.