

Germain Honda of College Hills



HONDA INSTALLATION INSTRUCTIONS

Accessory

DOOR HANDLE
PROTECTION FILMS
P/N 08P48-TVA-100A

Application

2022 ACCORD
2022 ACCORD HYBRID

Publications No.

VERSION 1

Issue Date

OCT 2021

PARTS LIST

4 Door handle protection films



4 Alcohol wipes



TOOLS AND SUPPLIES REQUIRED

Shop towel

Spray bottle

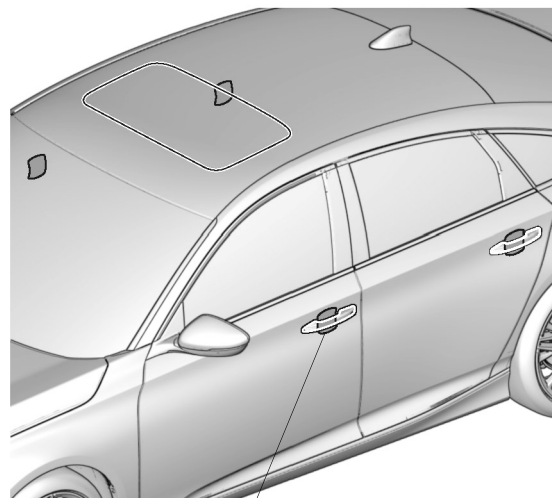
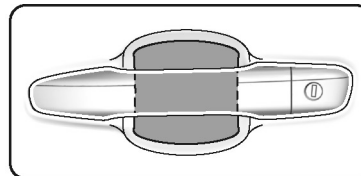
Gloves

3M protective tape application solution

The following tool is available through the Honda Tool and Equipment Program. On the iN, click on Service > Service Bay > Tool and Equipment Program, then enter the number under "Search." Or, call 888-424-6857.

Mini Soft Spreader/Applicator (T/N SBSA2302Y5PK)

Illustration of the Door Handle Protection Films on the Vehicle



4 DOOR HANDLE
PROTECTION FILMS

QK12301AA

INSTALLATION

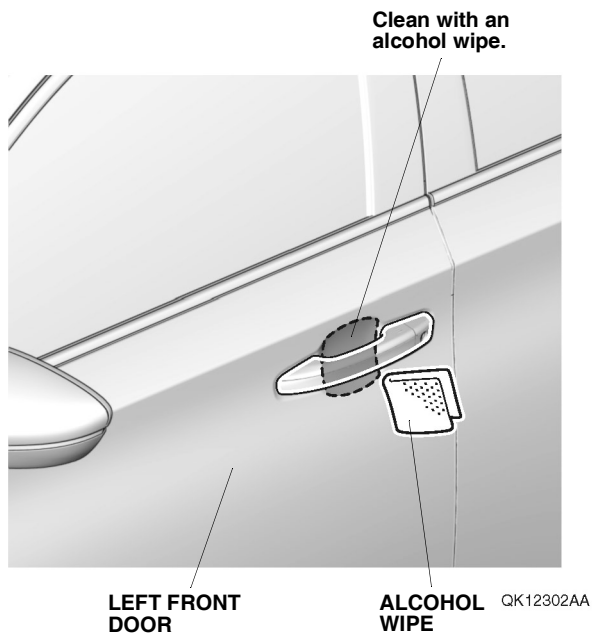
Customer Information: The information in this installation instruction is intended for use only by skilled technicians who have the proper tools, equipment, and training to correctly and safely add equipment to your vehicle. These procedures should not be attempted by "do-it-yourselfers."

NOTE:

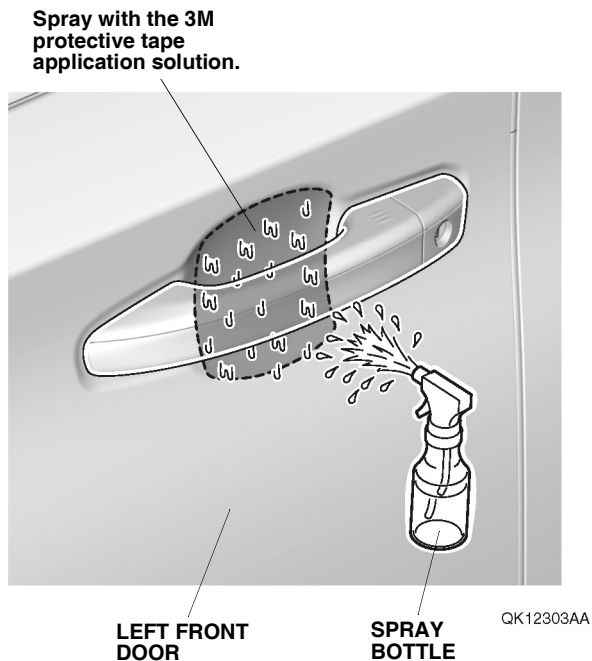
- Always wear gloves when working with 3M Protective tape application solution.
- Be careful not to damage the paint finish.
- This kit should be installed only if the ambient air temperature is 60°F (15°C) or above.
- To allow the adhesive to cure, do not wash the vehicle for 24 hours. Make sure your customer is aware of this.

Germain Honda of College Hills

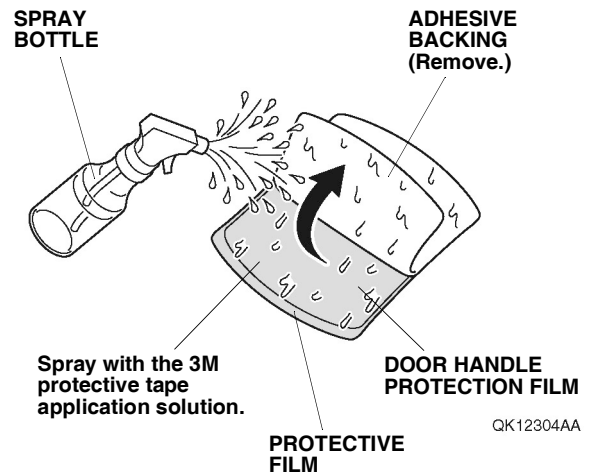
1. Using an alcohol wipe, thoroughly clean the left front door where the door handle protection film will attach.



2. Using a spray bottle with the 3M protective tape application solution, spray the left front door where the door handle protection film will attach.



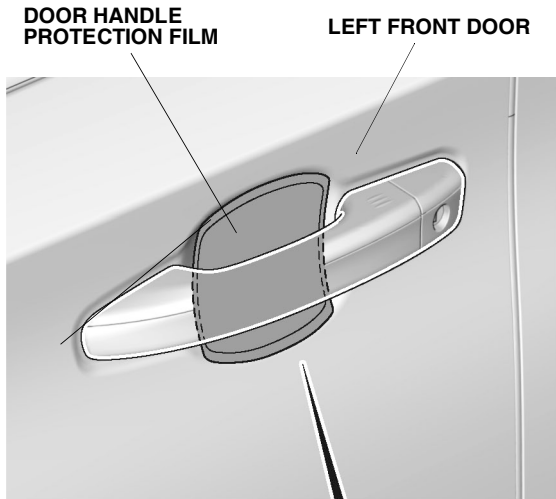
3. Remove the adhesive backing from the door handle protection film.



4. Spray the door handle protection film and protective film with the 3M protective tape application solution.

Germain Honda of College Hills

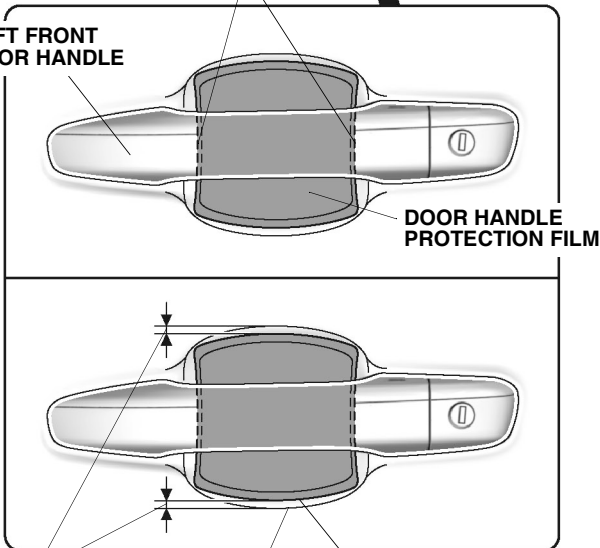
5. Line up the door handle protection film with the left front door as shown.



Line up so that the left and right spaces are equal.

FRONT VIEW

LEFT FRONT DOOR HANDLE



Line up so that the upper and lower spaces are equal.

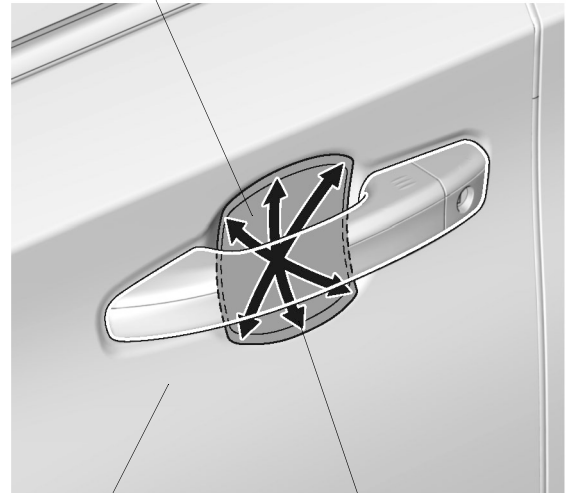
CURVE END

EDGE OF THE PROTECTIVE FILM

QK12305BA

6. Starting from the center and working outward, use the mini soft spreader/applicator to smooth out the door handle protection film. If you see an air bubble, stop and gently peel up that section to work out the bubble. Work slowly and keep pressure against the door handle protection film.

DOOR HANDLE PROTECTION FILM



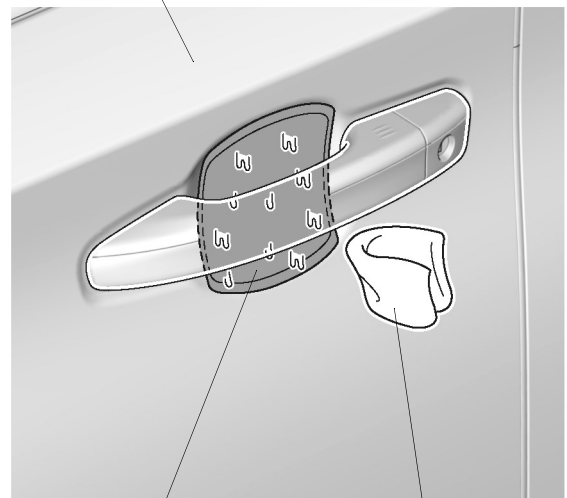
LEFT FRONT DOOR

Work from the center to the outside.

QK12306AA

7. Using a shop towel, wipe up the 3M protective tape application solution. Allow the door handle protection film to dry thoroughly.

LEFT FRONT DOOR



DOOR HANDLE PROTECTION FILM

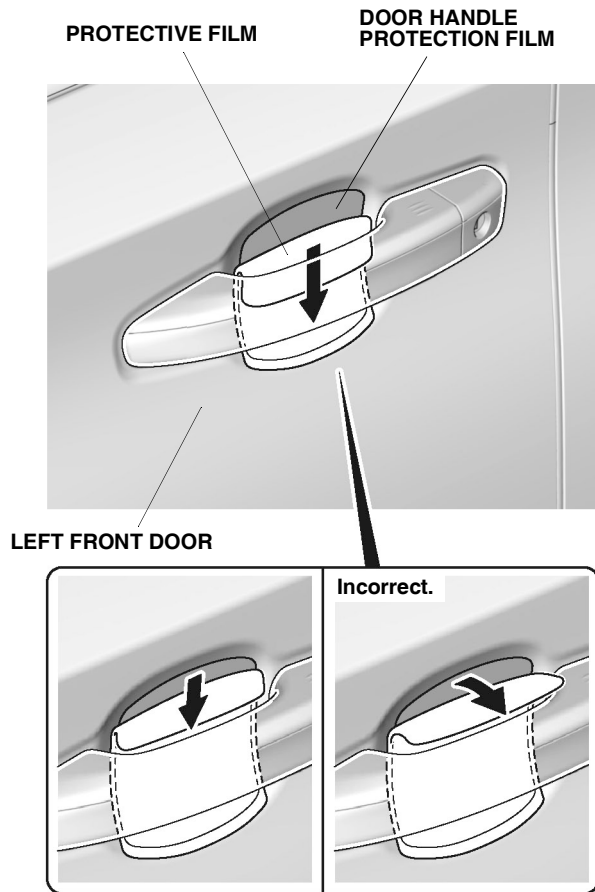
SHOP TOWEL

QK12307AA

Germain Honda of College Hills

8. Slowly remove the protective film from the door handle protection film.

NOTE: Do not pull up on the protective film.



QK12308AA

9. Repeat steps 1 through 8 for the remaining door handle films.