

Germain Honda of College Hills



HONDA INSTALLATION INSTRUCTIONS

Accessory

ALL-SEASON FLOOR MATS
P/N 08P17-TVA-100A

Application

2022 ACCORD
2022 ACCORD HYBRID

Publications No.

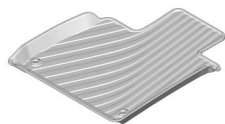
VERSION 1

Issue Date

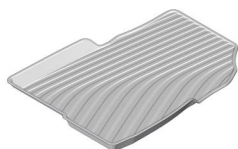
OCT 2021

PARTS LIST

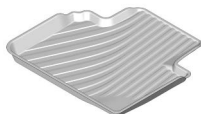
Driver's all-season floor mat



Passenger's all-season floor mat



Left rear all-season floor mat



Right rear all-season floor mat

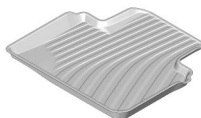
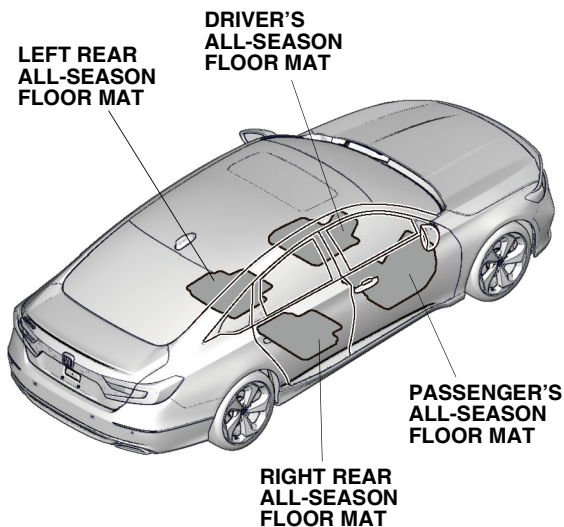


Illustration of the All-Season Floor Mats in the Vehicle



QG10701AN

INSTALLATION

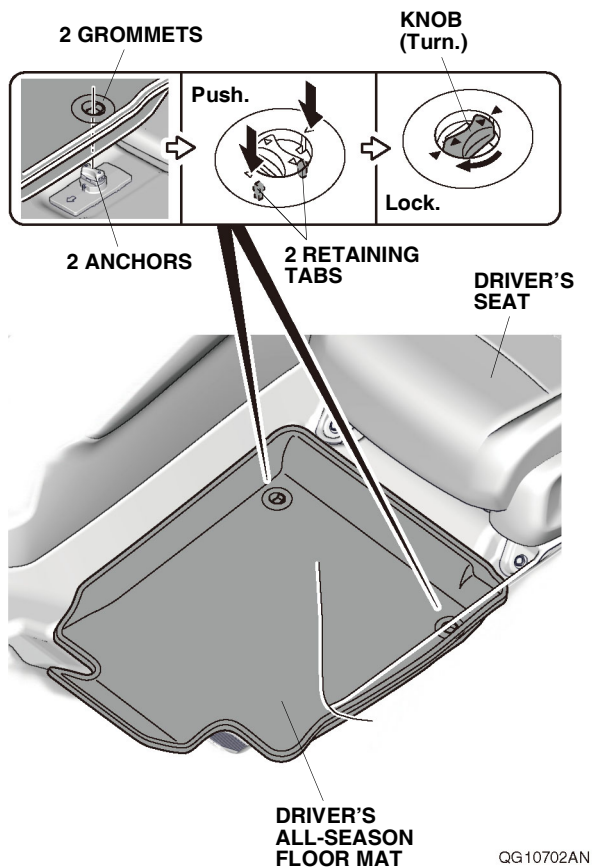
NOTE:

- Before installing the floor mats, identify their installation positions.
- Connect the floor mat to the anchors to prevent it from sliding forward and possibly interfering with the pedals.
- If you remove a floor mat, make sure you re-anchor it when you put it back in your vehicle.
- If you replace a floor mat, use a factory floor mat designed to be used with the anchors.
- If you use a non-factory floor mat in the driver's footwell, make sure it fits properly and that it can be used with the anchors.
- Do not put an additional floor mat on top of the anchored floor mat. It may slide forward and possibly interfere with the pedals.
- Position the rear seat floor mats properly. If they are not properly positioned, the floor mat can interfere with the front seat functions.

Germain Honda of College Hills

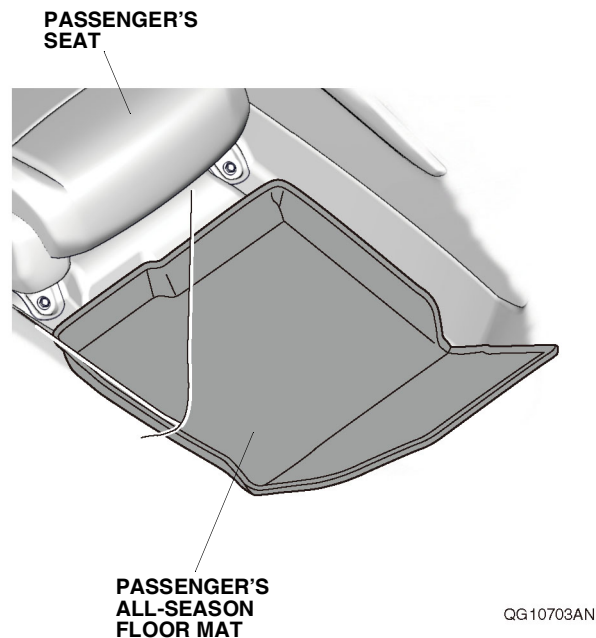
Installing the All-Season Floor Mats

1. Remove the standard floor mats.



2. Place the grommets in the driver's all-season floor mat over the anchors. Push the grommets into the anchors to secure the retaining tabs, then turn the knobs 90° to secure the driver's all-season floor mat.

3. Place the passenger's all-season floor mat as shown.



4. Place the left and right rear all-season floor mats as shown.

