



INSTALLATION INSTRUCTIONS

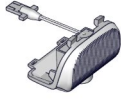
Accessory
PATTERN PROJECTORS
 P/N 08V27-TVA-100A

Application
2021 ACCORD
2021 ACCORD HYBRID

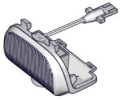
Publications No.
VERSION 1
 Issue Date
SEP 2020

PARTS LIST

Left light
 (Identification mark: L)



Right light
 (Identification mark: R)



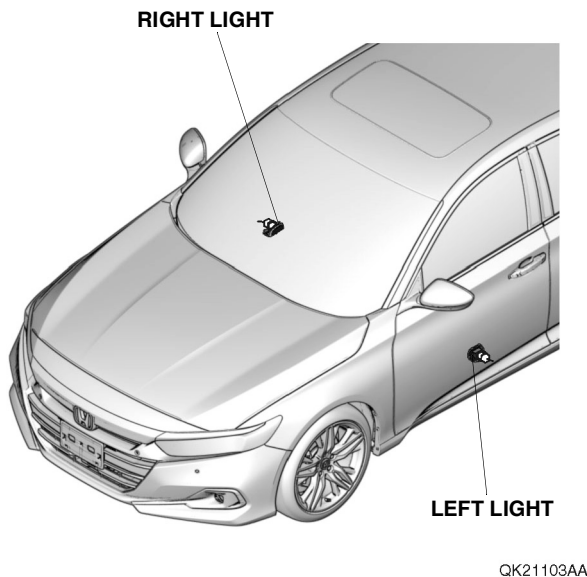
TOOLS AND SUPPLIES REQUIRED

10 mm Open end wrench

The following tools are available through the Honda Tool and Equipment Program. On the iN, click on Service > Service Bay > Tool and Equipment Program, then enter the number under "Search." Or, call 888-424-6857.

- Trim Tool Set (T/N SOJATP2014)
- Plastic Trim Tool (T/N SILTRIMTL10)

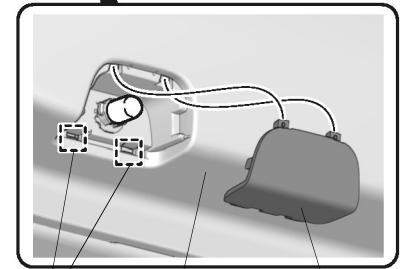
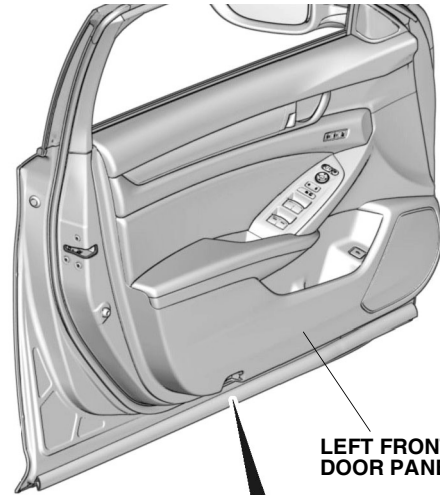
Illustration of the Pattern Projectors Installed in the Vehicle



INSTALLATION

Customer Information: The information in this installation instruction is intended for use only by skilled technicians who have the proper tools, equipment, and training to correctly and safely add equipment to your vehicle. These procedures should not be attempted by "do-it-yourselfers."

1. Disconnect the negative cable from the battery, then wait at least 3 minutes before starting work.
2. Remove the lens.



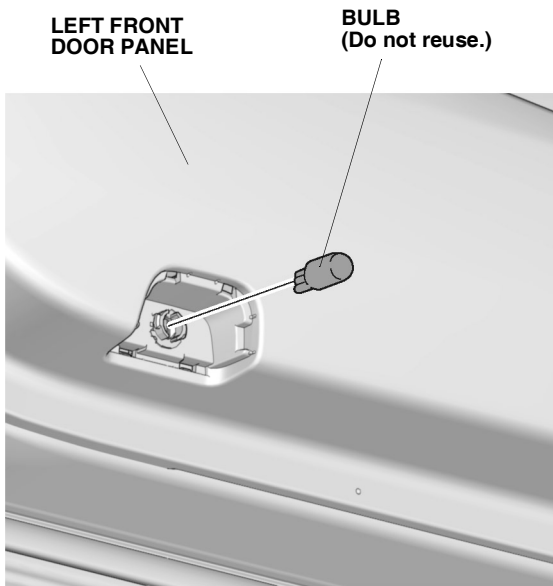
2 RETAINING TABS

LEFT FRONT DOOR PANEL

LENS

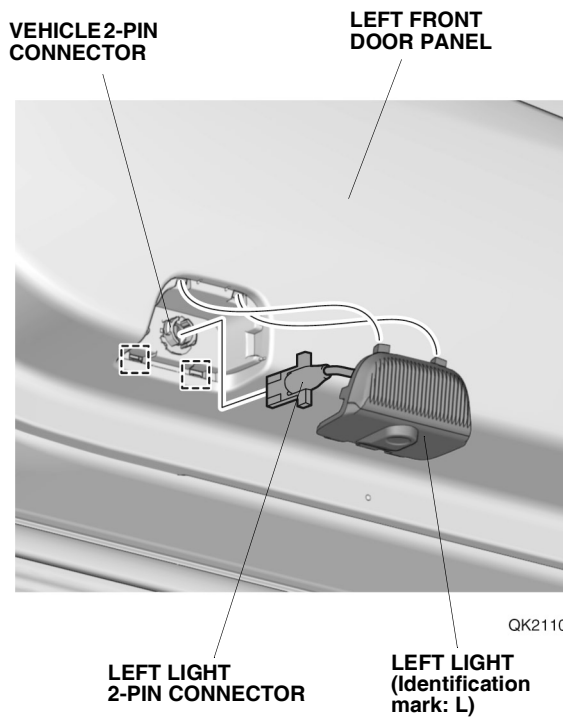
QK21104AA

3. Remove the bulb.



QK21105AA

4. Plug the left light 2-pin connector into the vehicle 2-pin connector, and install the left light to the left front door panel.
NOTE: Make sure to check the identification mark before installation.



QK21106BA

5. Repeat steps 2 through 4 on the right front door panel.

6. Check that all wire harnesses are routed properly and all connectors are plugged in.
7. Connect the negative cable to the battery.
8. Press and hold the audio unit power button for 2 seconds to restore the audio and navi (if equipped) system functions.
9. Set the clock on vehicles without navigation.
10. If necessary, restore the systems back to normal operation as described in the service information.

Check the Operation of the Pattern Projectors

11. Make sure the light comes on when you open each front door.