



HONDA INSTALLATION INSTRUCTIONS

Accessory

DOOR EDGE FILMS
P/N 08P20-TVA-100A

Application

2018 ACCORD

Publications No.

VERSION 1

Issue Date

FEB 2018

PARTS LIST

Left front door edge film
(Identification mark: FR-L)



Right front door edge film
(Identification mark: FR-R)



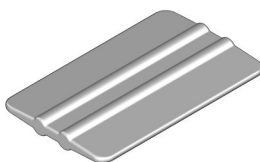
Left rear door edge film
(Identification mark: RR-L)



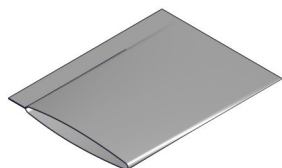
Right rear door edge film
(Identification mark: RR-R)



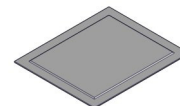
Applicator



Soft sleeve



2 Alcohol wipes



TOOLS AND SUPPLIES REQUIRED

Shop towel

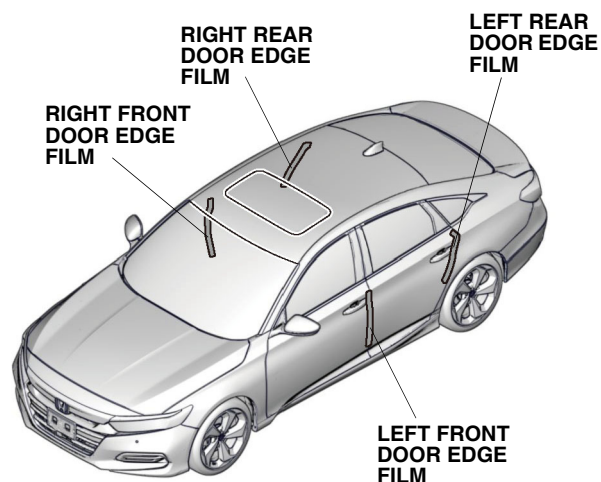
Spray bottle

3M protective tape application solution

Ruler

Scissors

Illustration of the Door Edge Films on the Vehicle



QFD1901BX

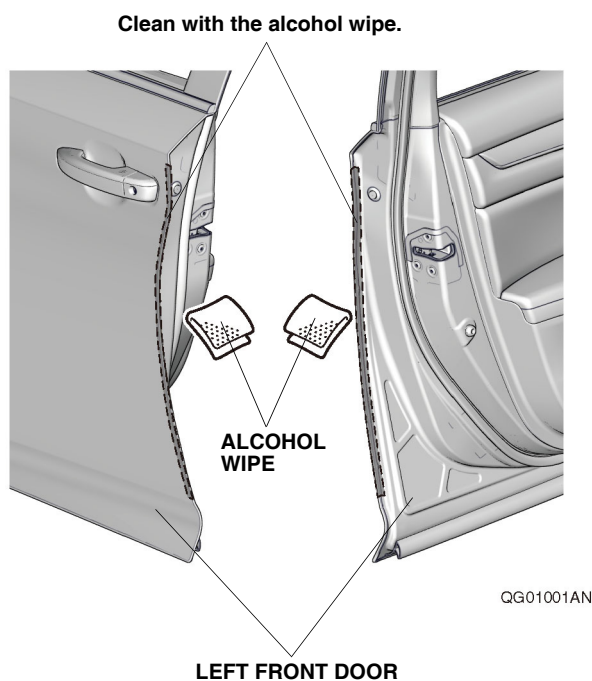
INSTALLATION

Customer Information: The information in this installation instruction is intended for use only by skilled technicians who have the proper tools, equipment, and training to correctly and safely add equipment to your vehicle. These procedures should not be attempted by “do-it-yourselfers.”

NOTE:

- If you are also installing body side moldings (sold separately), install them before you install the door edge films.
- These installation instructions show the left door edge films being installed. The same procedure applies to installing the right door edge films.
- Identify each door edge film by referring to the identification marks.
- Be careful not to damage the body paint finish.
- This kit should be installed only if the ambient air temperature is 15°C (60°F) or above.
- To allow the adhesive to cure, do not wash the vehicle for 24 hours. Make sure your customer is aware of this.

1. Open the left front door. Using the alcohol wipe, thoroughly clean the area where the left front door edge film will attach.

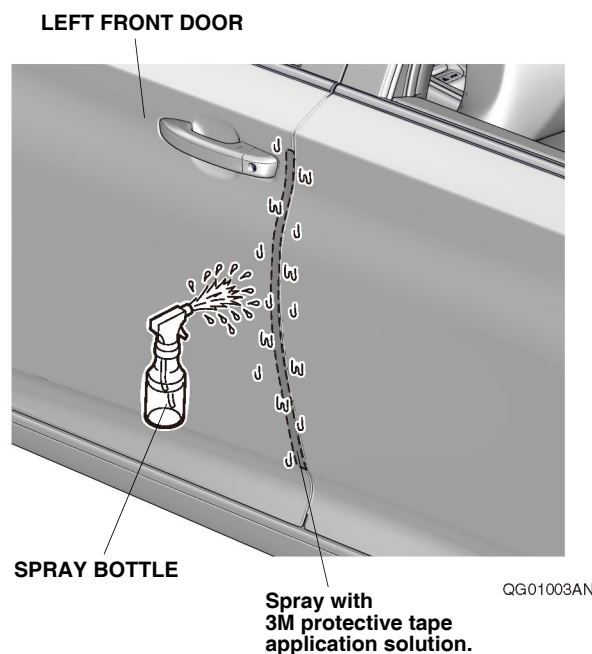


2. Open the left rear door. Using the alcohol wipe, thoroughly clean the area where the left rear door edge film will attach.



3. Close the left front and rear doors. Using a spray bottle with 3M protective tape application solution, spray the area where the left front door edge film will attach.

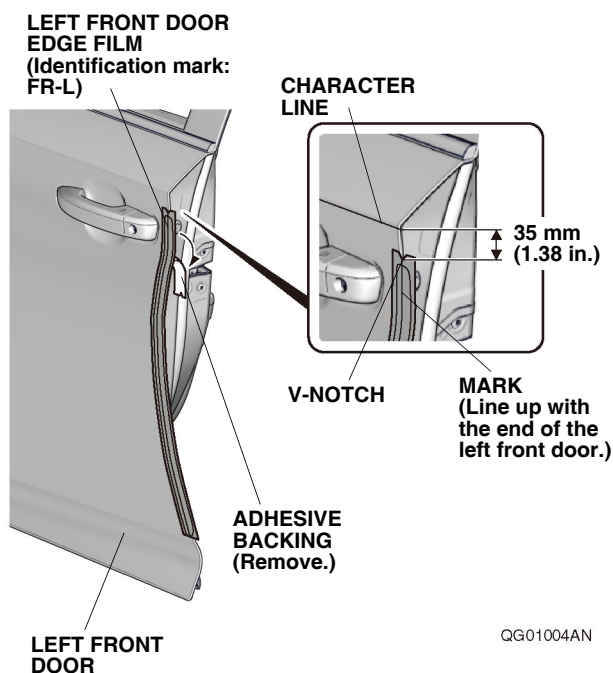
NOTE: Spray the outer surface of the door only.



If the vehicle is equipped with body side moldings, go to step 6; otherwise, continue with step 4.

4. Open the left front door again. Peel back about 50 mm (1.97 in.) of adhesive backing from the left front door edge film. Line up the left front door edge film with the left front door as shown.

NOTE: Check the identification mark and the installation position of the left front door edge film.

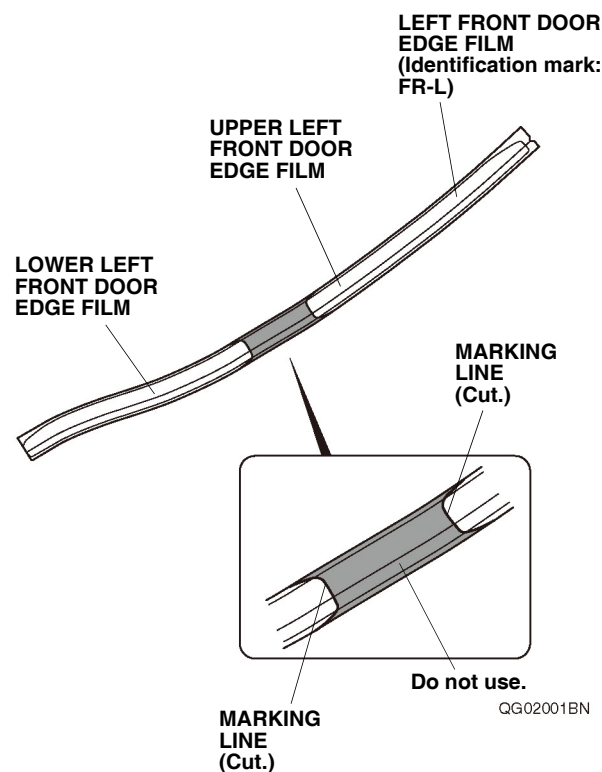


5. While applying light pressure, carefully remove the adhesive backing. Go to step 10.

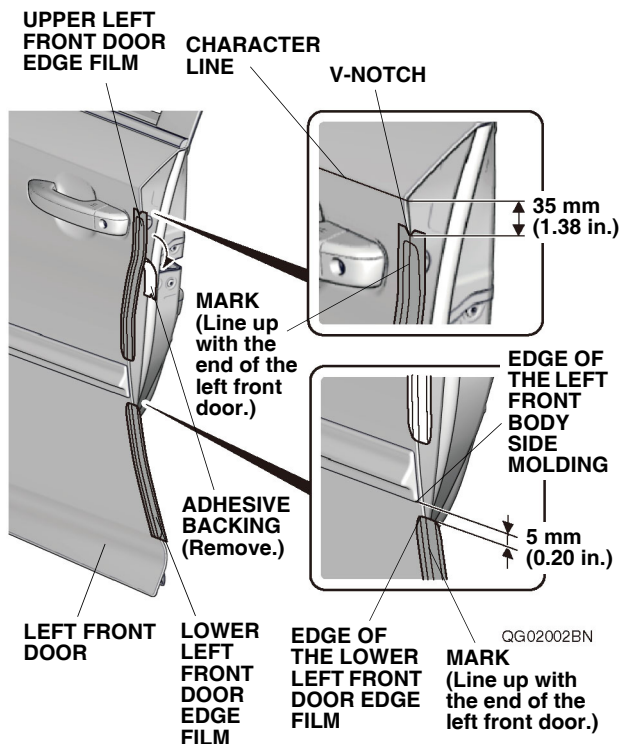
With Body Side Moldings

6. Using scissors, cut off the left front door edge film as shown.

NOTE: Check the identification mark of the left front door edge film.

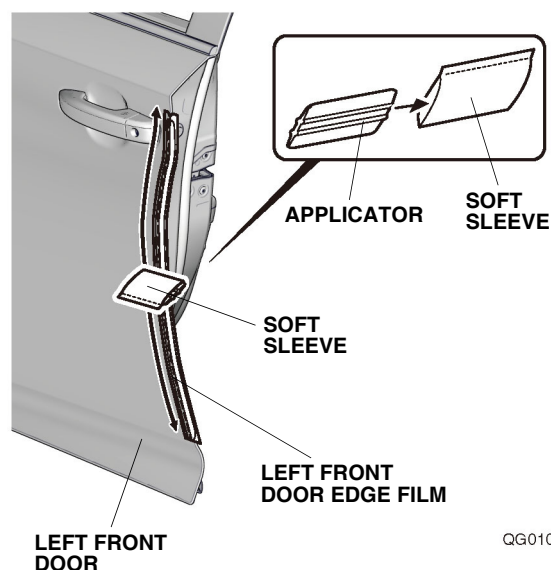


7. Open the left front door again. Peel back about 50 mm (1.97 in.) of adhesive backing from the upper left front door edge film. Line up the upper left front door edge film with the door as shown.
NOTE: Check the installation position of the left front door edge films.

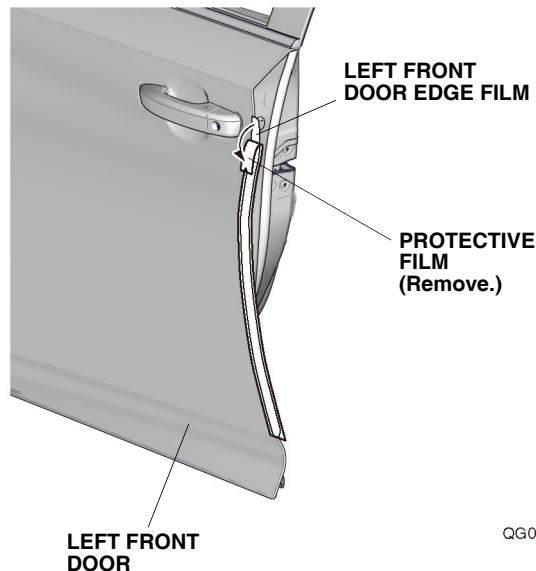


8. While applying light pressure, carefully remove the adhesive backing.
9. Repeat the steps 7 and 8 to install the lower left front door edge film.

10. Insert the applicator into the soft sleeve. Starting from the center and working outward, use the soft sleeve to smooth the left front door edge film. Move the soft sleeve in one direction only.

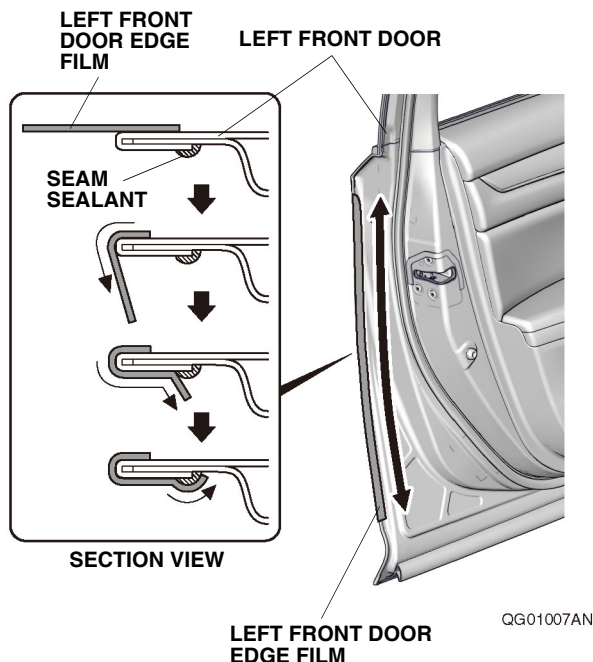


11. Slowly remove the protective film from the left front door edge film.

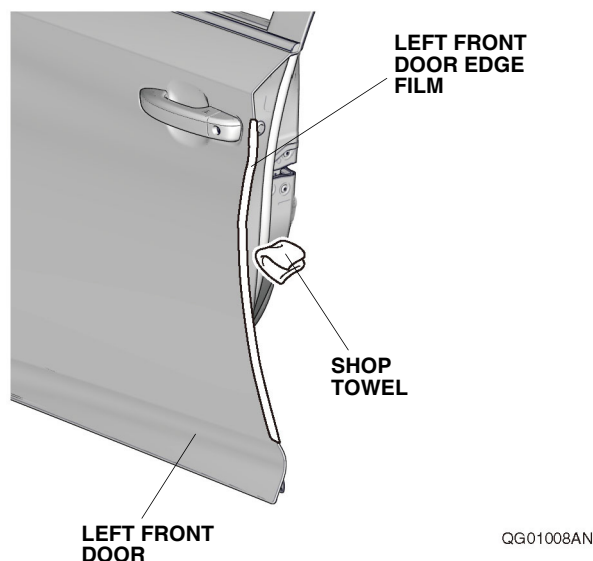


12. Starting from the center and working outward, use your fingers to fold the left front door edge film around the edge of the door. Move your fingers in one direction. Attach the left front door edge film over the seam sealant.

NOTE: Do not trim or damage the seam sealant.

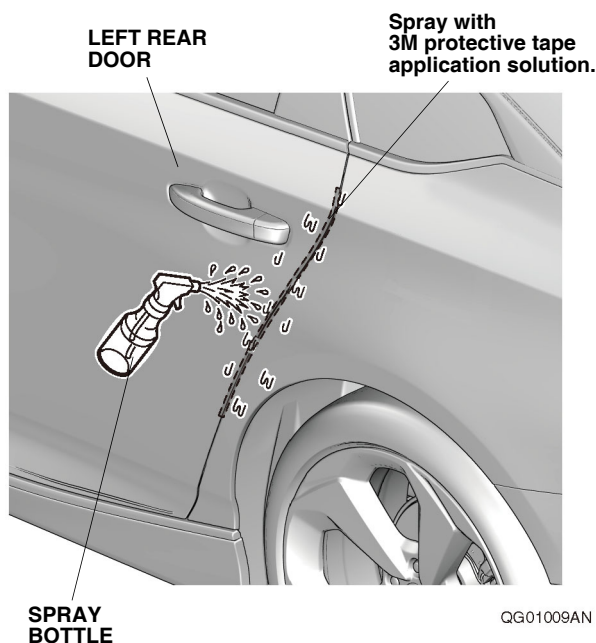


13. Using a shop towel, wipe the 3M protective tape application solution from the left front door edge film. NOTE: Allow the left front door edge film to dry thoroughly.

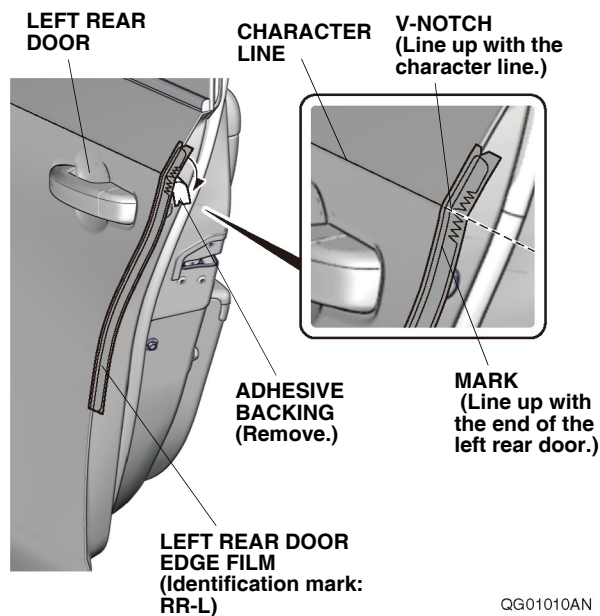


14. Using a spray bottle with 3M protective tape application solution, spray the area where the left rear door edge film will attach.

NOTE: Spray the outer surface of the door only.

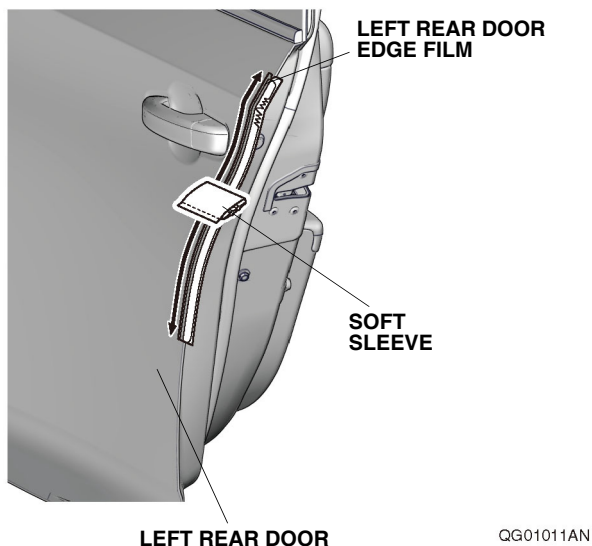


15. Open the left rear door again. Peel back about 50 mm (1.97 in.) of adhesive backing from the left rear door edge film. Line up the left rear door edge film with the left rear door as shown. NOTE: Check the identification mark and installation position of the left rear door edge film.

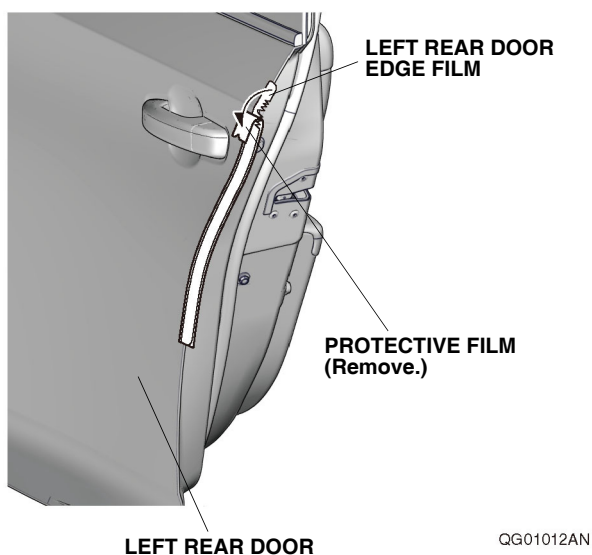


16. While applying light pressure, carefully remove the adhesive backing.

17. Starting from the center and working outward, use the soft sleeve to smooth the left rear door edge film. Move the soft sleeve in one direction only.

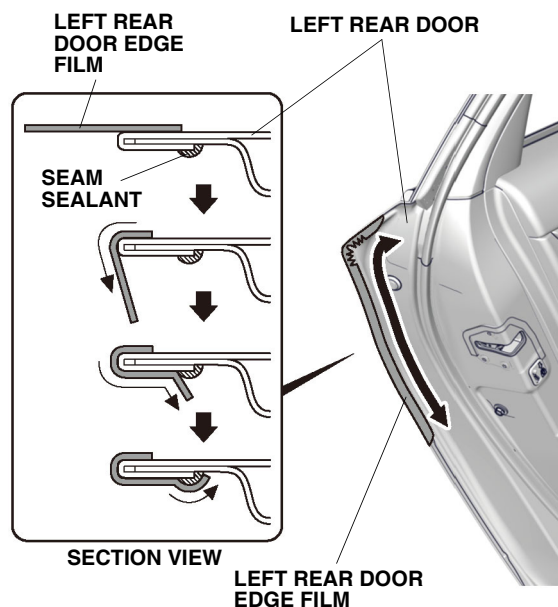


18. Slowly remove the protective film from the left rear door edge film.

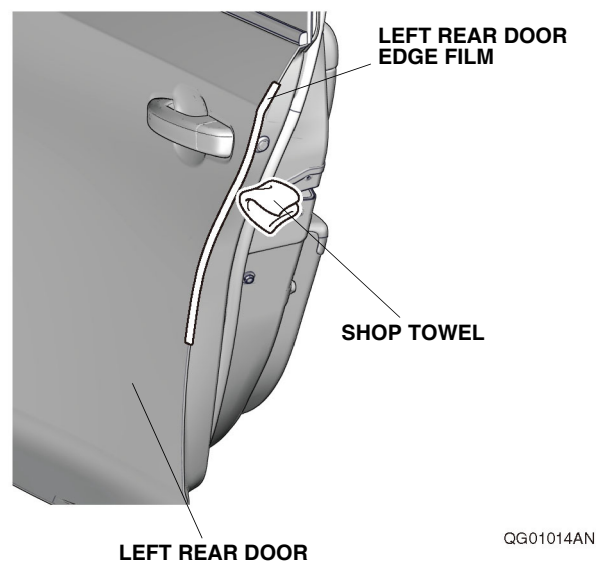


19. Starting from the center and working outward, use your fingers to fold the left rear door edge film around the edge of the door. Move your fingers in one direction. Attach the left rear door edge film over the seam sealant.

NOTE: Do not trim or damage the seam sealant.



20. Using a shop towel, wipe the 3M protective tape application solution from the left rear door edge film. NOTE: Allow the left rear door edge film to dry thoroughly.



21. Repeat steps 1 through 20 on the right side of the vehicle.