



## INSTALLATION INSTRUCTIONS

Accessory

FENDERWELL TRIM  
P/N 08P21-SDA-100

Application

2010 ODYSSEY

Publications No.

All 41827

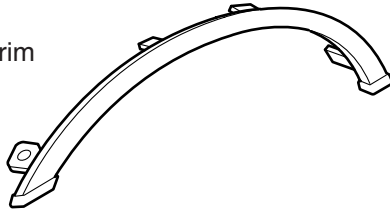
Issue Date

JUNE 2009

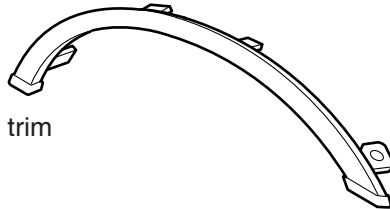
**NOTE:** Fenderwell trim cannot be installed on a vehicle equipped with a Full or Half Nose Mask.

### PARTS LIST

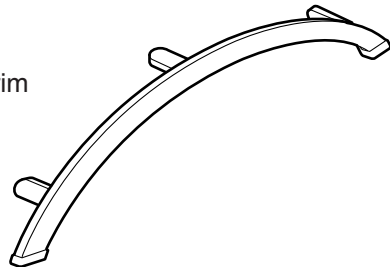
Left front fenderwell trim



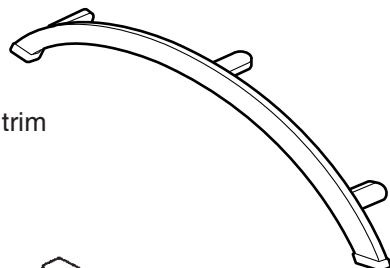
Right front fenderwell trim



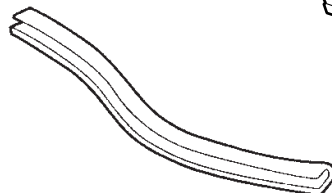
Left rear fenderwell trim



Right rear fenderwell trim



2 Inner protectors



### TOOLS AND SUPPLIES REQUIRED

Flat-tip screwdriver

Pliers

Rubber mallet

Shop towel

Liquid dishwashing soap and water

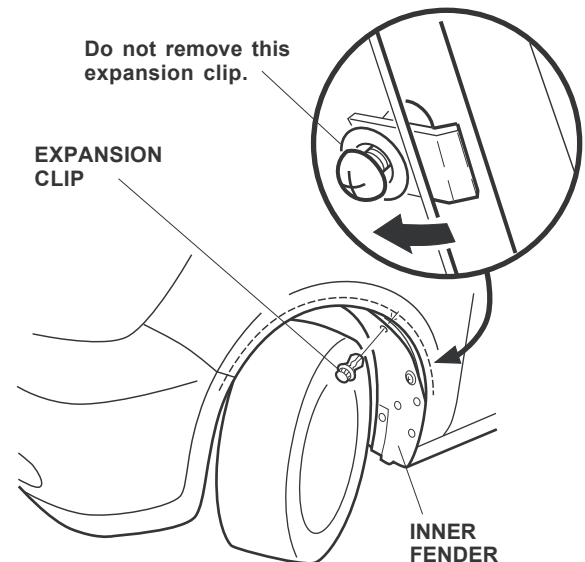
### INSTALLATION

**NOTE:**

- These instructions show the left fenderwell trims being installed, the same procedure applies to the right fenderwell trims.
- Each fenderwell trim is identified by a label attached to the inside surface.

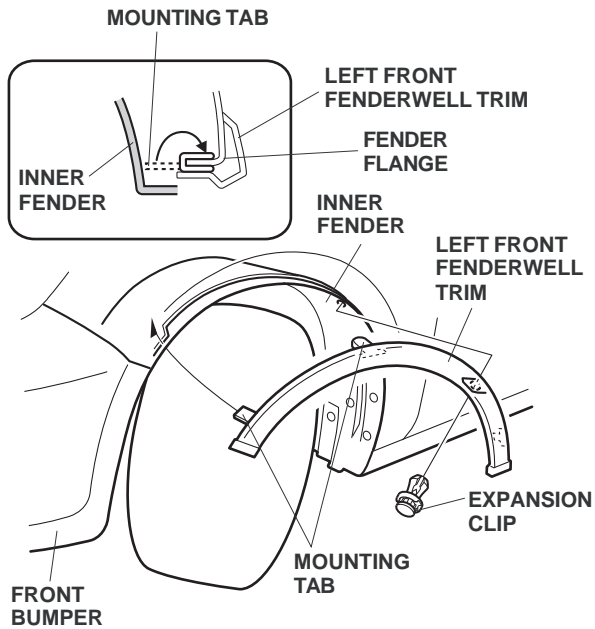
#### Installing the Front Fenderwell Trim

1. Turn the steering wheel all the way counterclockwise.
2. Remove the expansion clip that secures the inner fender. Push in on the inner fender to release the clip.



3. Clean the area to be covered, and wax it with a high-quality paste wax.

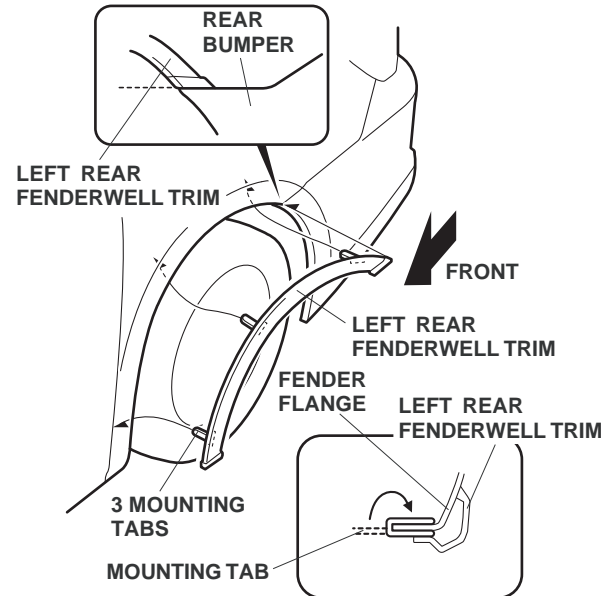
- Pull the inner fender down, and position the fenderwell trim between the inner fender and the fender flange.



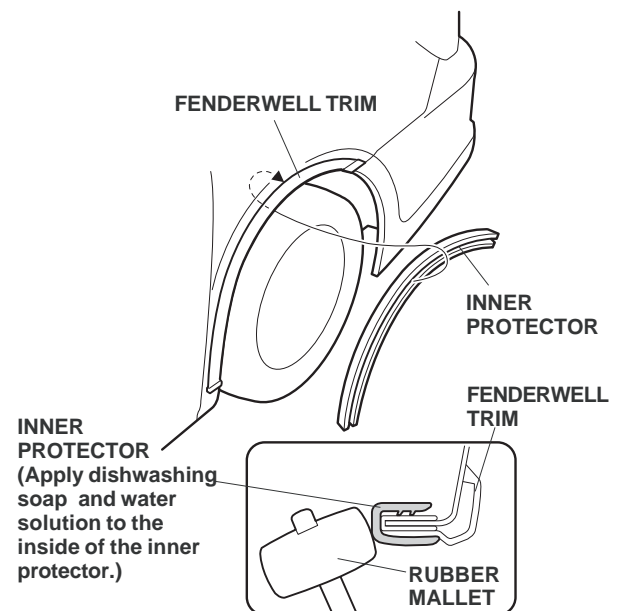
- While holding the left front fenderwell trim firmly against the fender, squeeze the two mounting tabs around the fender flange as shown. If necessary, use pliers over a shop towel to bend the mounting tabs around the fender flange.
- Attach the left front fenderwell trim and the inner fender to the front fender with the expansion clip removed in step 2.
- Turn the steering wheel clockwise and repeat steps 1 through 6 to install the right front fenderwell trim.

### Installing the Rear Fenderwell Trim

- Position the left rear fenderwell trim on the fender flange, and align the rear of the fenderwell trim with the rear bumper. While holding the fenderwell trim firmly against the fender, bend the three mounting tabs around the fender flange.



- Using a rubber mallet, install the inner protector over the fender flange and fenderwell trim.



- Repeat steps 8 and 9 to install the left rear fenderwell trim.