

## 1. Both Front Wheel Arch Protectors Front Side - Remove

### Fastener Locations

A ▶: 2



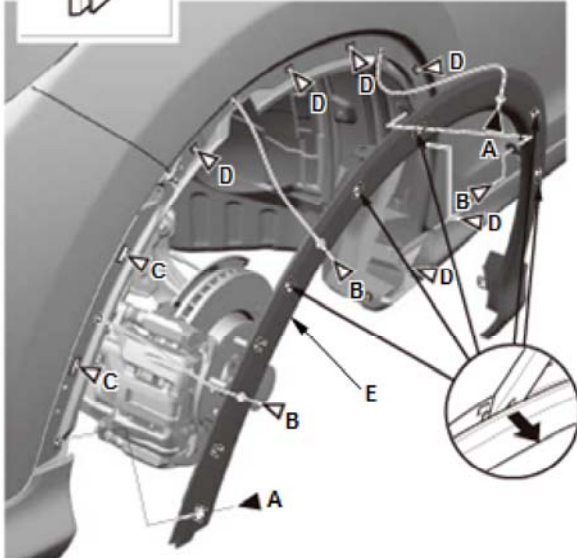
B ▶: 3



C ▶: 2



D ▶: 6



NOTE: Repeat this procedure on the opposite side.

1. Remove the screws (A) and the clips (B).
2. Detach the clips (C, D) with the trim tool, then detach the front wheel arch protector (E) front side as needed.

3. Put a shop towel (A) in the opening between the front wheel arch protector and the front fender.



## 2. Front Bumper - Remove

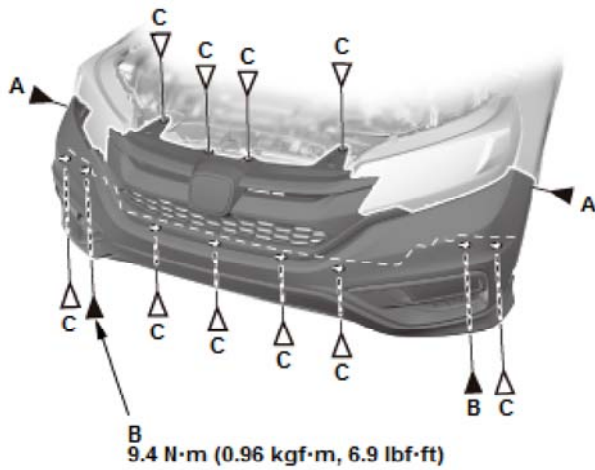
1. Remove the screws (A), the bolts (B), and the clips (C).

## Fastener Locations

A ▶: 2

B ▶: 2

C ▶: 10



2. Pull out the front bumper (A) at the wheel arch area to release it from the hooks (B) on the side spacer.

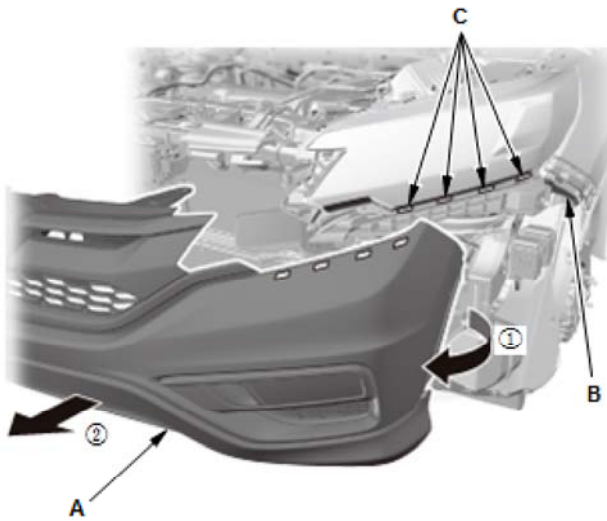
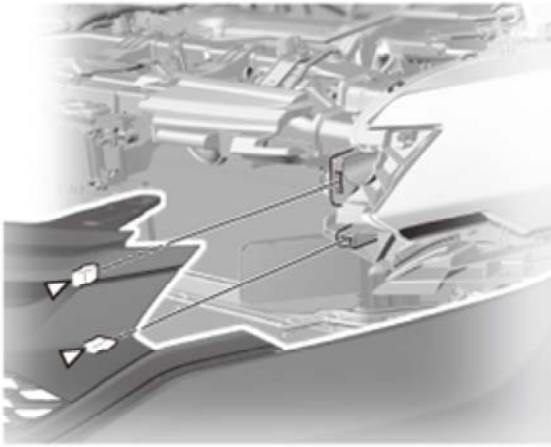
NOTE: Repeat this procedure on the opposite side.

3. Detach the clips (A).

NOTE: Repeat this procedure on the opposite side.

## Fastener Locations

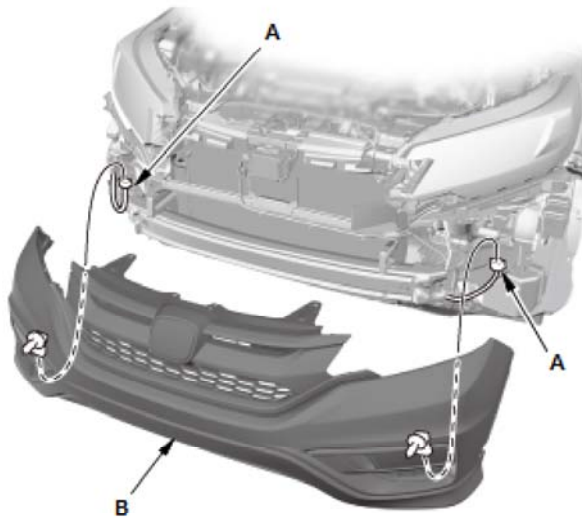
A▷: 2



4. With the help of an assistant, while pulling the front bumper (A) away from the side spacer (B), release the bumper from the hooks (C) on the upper beam.

NOTE: Repeat this procedure on the opposite side.

5. For some models: Disconnect the connectors (A).
6. With the help of an assistant, remove the front bumper (B)



**3. All Removed Parts - Install**

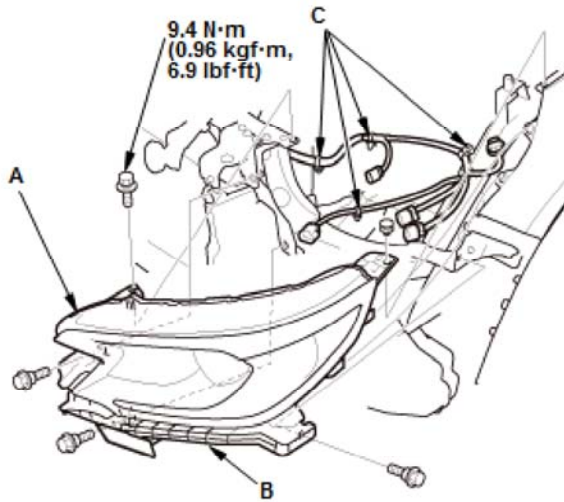
1. Install the parts in the reverse order of removal.

## Headlight Removal and Installation

### Removal

#### 1. Front Bumper - Remove

#### 2. Headlight - Remove



1. Remove the headlight (A) with the corner upper beam (B) as an assembly.

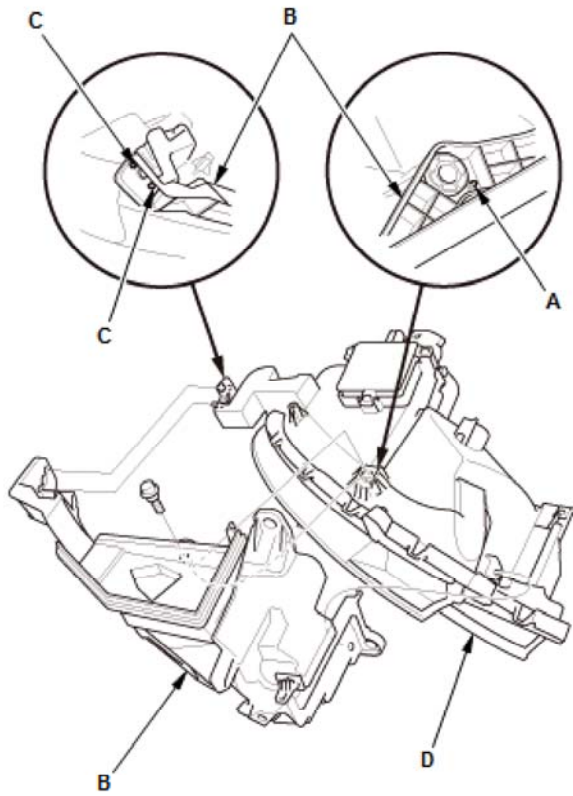
2. Remove the harness clips (C) from the headlight housing.

3. Disconnect these connectors:

- Headlight (low beam) connector
- Headlight (high beam)/Daytime running light connector<sup>\*1</sup>
- Headlight (high beam) connector<sup>\*2</sup>
- Daytime running light/Front parking light (LED) connector<sup>\*2</sup>
- Front parking light/Front side marker light connector<sup>\*1</sup>
- Front side marker light<sup>\*2</sup>
- Front turn signal light connector

\*1: Without LED Daytime Running Light

\*2: With LED Daytime Running Light



4. Remove the bolt, and release the pin (A) from the corner upper beam (B).
5. Release the pins (C) from the corner upper beam, then remove the corner upper beam from the headlight (D).

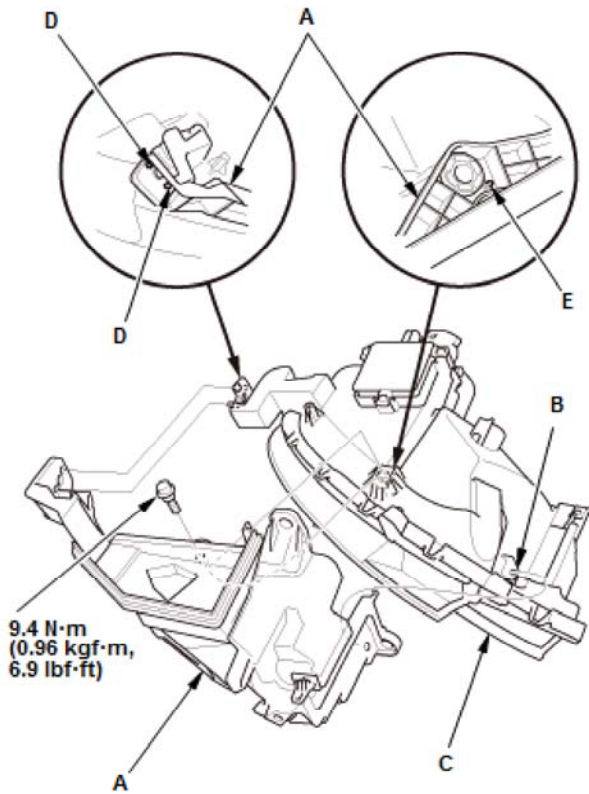
### 3. All Removed Parts - Install

1. Install the parts in the reverse order of removal.

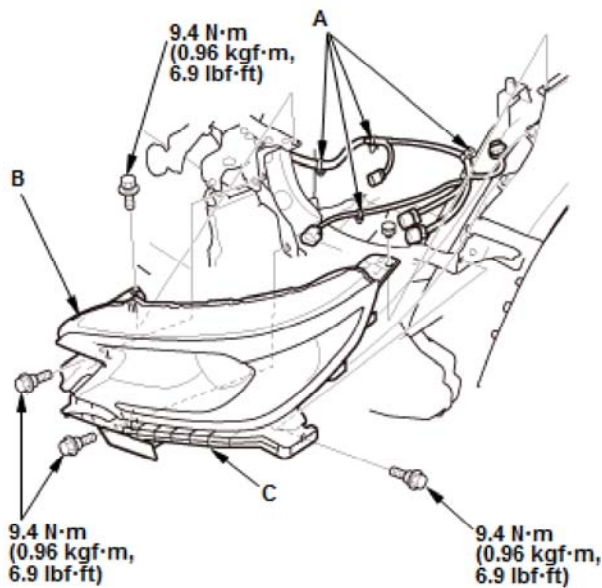
### 4. Headlight - Adjustment

## Installation

### 1. Headlight - Install



1. Install the corner upper beam (A) to the pin (B) of the headlight (C).
2. Install the corner upper beam to the pins (D).
3. Install the corner upper beam to the pin (E), then install the bolt.



4. Connect these connectors:

- Headlight (low beam) connector
- Headlight (high beam)/Daytime running light connector\*<sup>1</sup>
- Headlight (high beam) connector\*<sup>2</sup>
- Daytime running light/Front parking light (LED) connector\*<sup>2</sup>
- Front parking light/Front side marker light connector\*<sup>1</sup>
- Front side marker light\*<sup>2</sup>
- Front turn signal light connector

\*1: Without LED Daytime Running Light

\*2: With LED Daytime Running Light

5. Install the harness clips (A) to the headlight housing.
6. Install the headlight (B) with the corner upper beam (C) as an assembly.

## 2. Front Bumper - Install

## 3. Headlight - Adjustment





## 1. Headlight - Adjustment



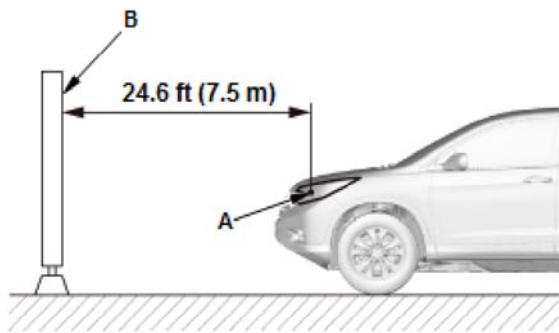
### **CAUTION**

Headlights become very hot during use; do not touch them or any attaching hardware immediately after they have been turned off.

Before adjusting the headlights:

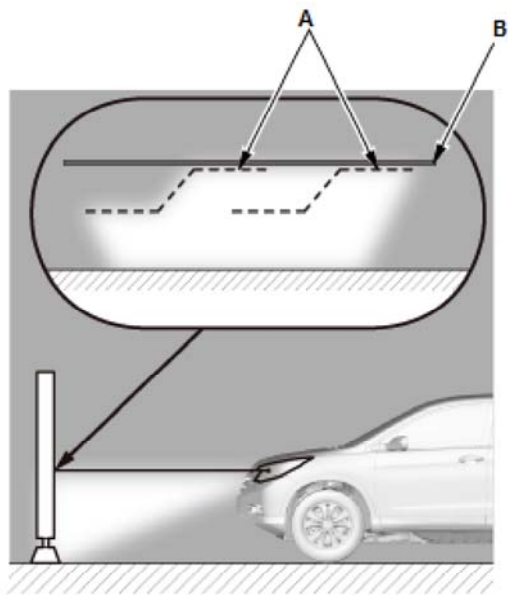
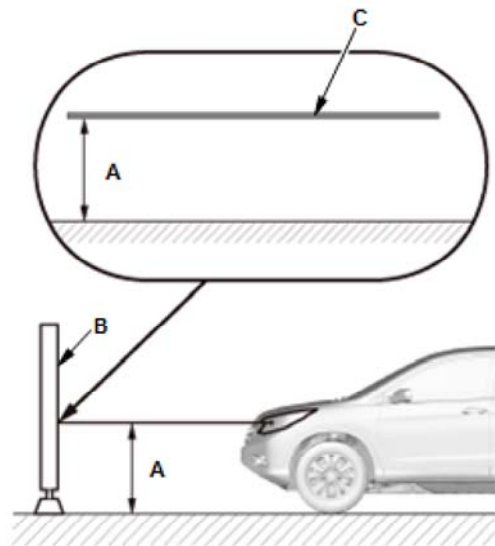
- Park the vehicle on a level surface.
- Make sure the tire pressures are correct.
- The driver or someone who weighs the same should sit in the driver's seat (or use an equivalent weight).
- Unload the vehicle.

1. Clean the outer lens so that you can see the center (A) of the headlights.



2. Park the vehicle so that the center mark of the headlight (A) is 24.6 ft (7.5 m) away from a wall or screen (B).

3. Measure the height of the headlight's center mark (A), then on the wall or screen (B), mark the same height of the headlights with masking tape in a straight horizontal line (C).



4. Turn on the low beam headlights.
5. Determine if the headlights are aimed properly.
6. Vertical adjustment:
  - 1. Measure the height of the headlights (A).
  - 2. Adjust the upper edge of the cut line (B) to the headlights' height.

7. If adjustment is necessary, open the hood and adjust the headlights to local requirements by turning the adjusters (A).

