



HONDA INSTALLATION INSTRUCTIONS

Accessory

CARGO NET
P/N 08L96-TBA-100B

Application

2021 CIVIC
4-DOOR

Publications No.

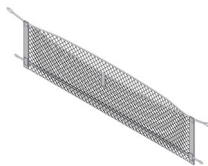
VERSION 1

Issue Date

SEP 2020

PARTS LIST

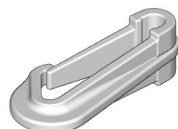
Cargo net



4 Rings



4 Snaps



TOOLS AND SUPPLIES REQUIRED

The following tools are available through the Honda Tool and Equipment Program. On the iN, click on Service > Service Bay > Tool and Equipment Program, then enter the number under "Search." Or, call 888-424-6857.

- Trim Tool Set (T/N SOJATP2014)
- Plastic Trim Tool (T/N SILTRIMTL10)

Illustration of the Cargo Net Installed in the Vehicle



CARGO NET

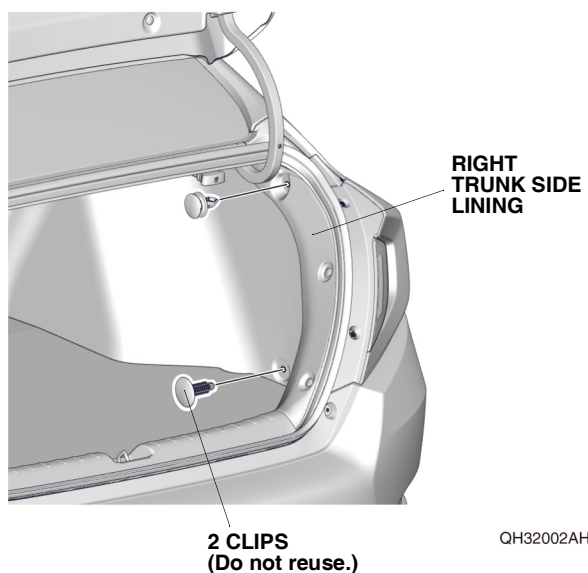
QH32001BH

INSTALLATION

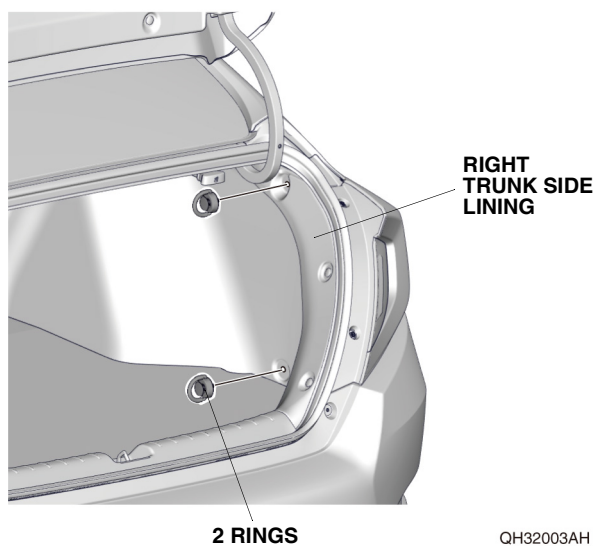
Customer Information: The information in this installation instruction is intended for use only by skilled technicians who have the proper tools, equipment, and training to correctly and safely add equipment to your vehicle. These procedures should not be attempted by "do-it-yourselfers."

NOTE: Be careful not to damage the body.

1. Open the trunk lid. Remove the two clips from the right trunk side lining.

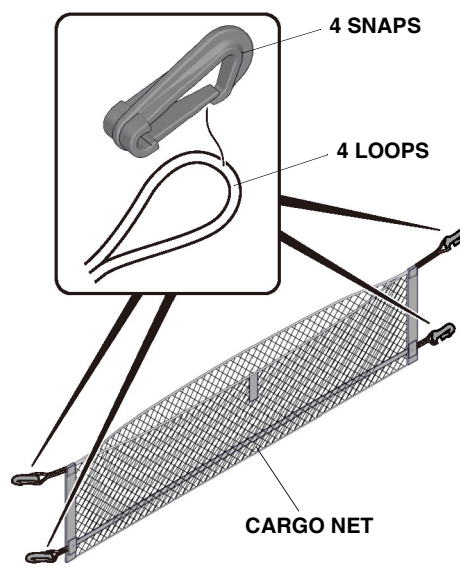


2. Install the two rings into the clip holes.

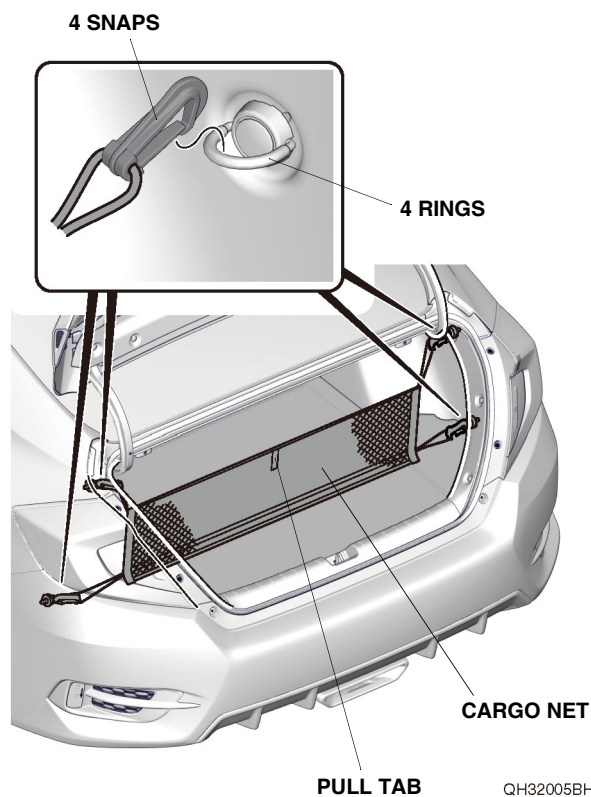


3. Repeat steps 1 and 2 on the left side of the vehicle.

4. Attach the four snaps to the cargo net to the loops shown.



5. Attach the four snaps from the cargo net to the rings.



Give a Copy of This Page to Your Customer

- Do not store large or fragile objects in the net.
- Do not store objects with sharp edges or corners, as they may damage the cargo net or the vehicle. Wrap them in paper or a blanket so they will not contact the net directly.