



# TYPHOON INTAKE SYSTEMS

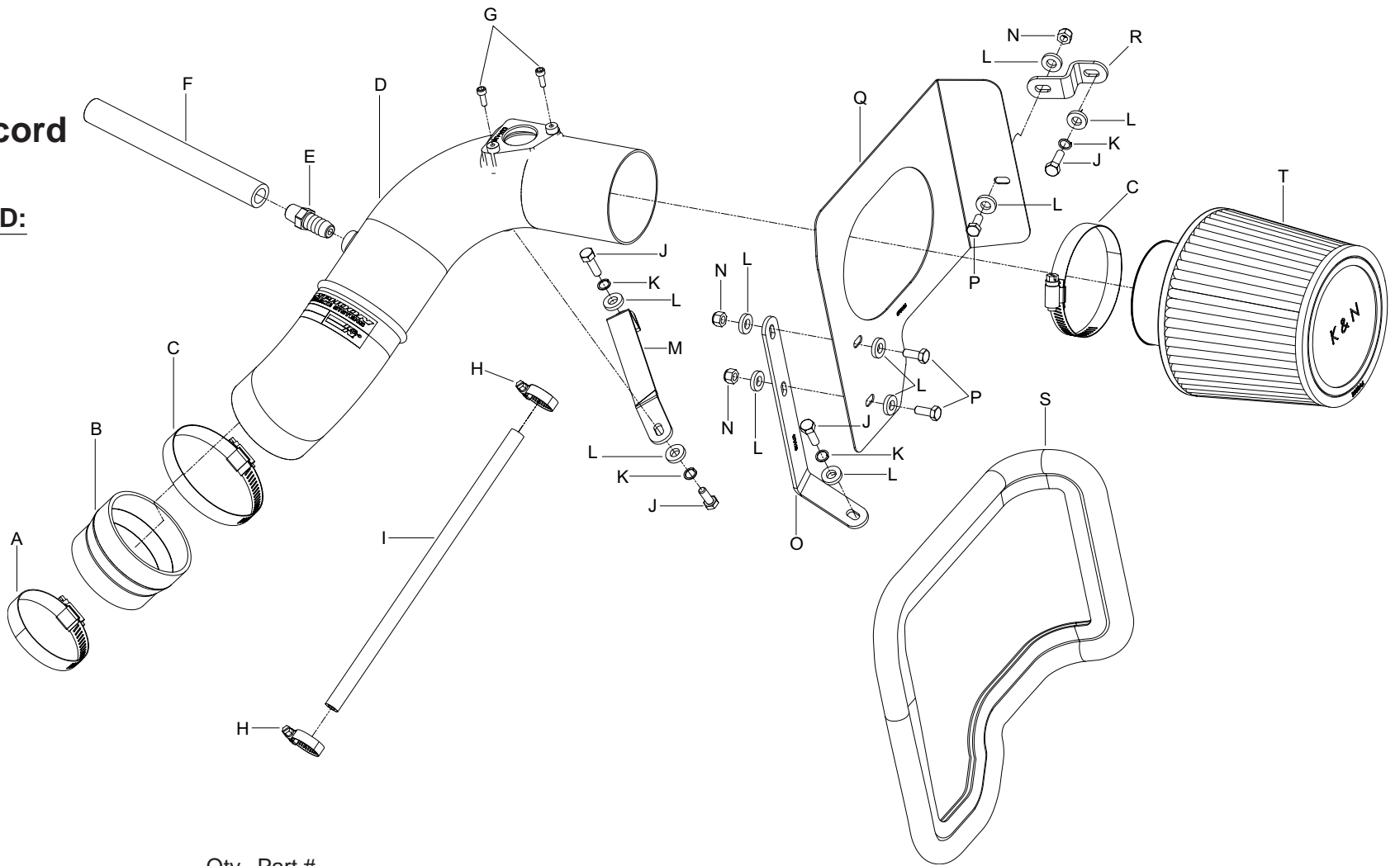


## INSTALLATION INSTRUCTIONS

**69-1211**  
**HONDA**  
**2008-11 Accord**  
**L4-2.4L**

**TOOLS NEEDED:**

- 3mm allen wrench
- 10mm socket
- 10mm wrench extension
- flat blade screw driver
- phillips screw driver
- pliers
- ratchet



**PARTS LIST:**

| Description                             | Qty. | Part # | Description                            | Qty. | Part # | Description                          | Qty. | Part #  |
|---|------|--------|--|------|--------|--------------------------------------|------|---------|
| A Hose Clamp #44                        | 1    | 08577  | H Hose Clamp #004                      | 2    | 21850  | O Bracket; "L", 69-1211, STL. TK/PC  | 1    | 070123  |
| B Hose; 3" TO 2-3/4" ID X 2" L TPRD     | 1    | 084036 | I Hose; 1/4" ID X 10-1/2" L Reinforced | 1    | 08400  | P Bolt; M6 X 1.00" X 20MM HEX, SS    | 3    | 07795   |
| C Hose Clamp #48                        | 2    | 08601  | J Bolt; 6MM-1.00 X 16MM, SS            | 4    | 07812  | Q Heat Shield                        | 1    | 073106  |
| D Intake Tube                           | 1    | 27430  | K Washer; 1/4" Lock, ZN                | 4    | 08198  | R Bracket; 69-6026, "Z", STL., FB/PC | 1    | 070061  |
| E Vent; Strt. 1/2" Hose, 1/4"NPT, Plas. | 1    | 080022 | L Washer; 1/4"ID X 5/8"OD - SAE        | 10   | 08275  | S Edge Trim (39")                    | 1    | 102496  |
| F Hose; 1/2" ID X 7" L                  | 1    | 08159  | M Bracket; "Z", 69-1211, STL., TK/PC   | 1    | 070124 | T Air Filter                         | 1    | RU-3570 |
| G Bolt; M4 - 0.07 8MM, A/H CAP, SS      | 2    | 07733  | N Nut; 6MM Nylock, Hexhead, SS         | 3    | 07512  |                                      |      |         |

**NOTE: FAILURE TO FOLLOW INSTALLATION INSTRUCTIONS AND NOT USING THE PROVIDED HARDWARE MAY DAMAGE THE INTAKE TUBE, THROTTLE BODY AND ENGINE.**

**TO START:**

1. Turn off the ignition and disconnect the negative battery cable.  
**NOTE: Disconnecting the negative battery cable erases pre-programmed electronic memories. Write down all memory settings before disconnecting the negative battery cable. Some radios will require an anti-theft coded to be entered after the battery is reconnected. The anti-theft code is typically supplied with your owner's manual. In the event your vehicles' anti-theft code cannot be recovered, contact an authorized dealership to obtain your vehicles anti-theft code.**



2. Disconnect the mass air sensor electrical connection and then unhook the wiring harness from air box.



3. Release the spring clamp and then disconnect the crank case vent hose from the intake tube.



4. Release the two hose clamps securing the intake tube to the air box and throttle body.



5. Remove the stock intake tube from the vehicle.



6. Unhook the wiring harness from the air box as shown.



7. Loosen and remove the two air box mounting bolts.  
**NOTE: The front air box mounting bolt is down low next to the battery hold down.**



8. Remove the complete air box assembly from the vehicle.  
**NOTE: K&N Engineering, Inc., recommends that customers do not discard factory air intake.**



9. Release the spring clamp which secures the crank case vent hose to the valve cover and then unhook crank case vent hose from the valve cover as shown.



10. Release the two spring clamps securing the coolant bypass hoses to the throttle body and thermostat housing, then remove the bypass hose assembly from the vehicle.

**NOTE: The engine should be cool before performing this step so that HOT coolant is not released out of the engine. Be sure to capture any lost coolant.**



11. Install the provided coolant bypass hose onto the throttle body and thermostat housing and secure with the provided hose clamp.

**NOTE: Be sure to replenish any lost coolant.**



12. Remove the bolt shown that secures the heater hose mounting bracket to thermostat housing.



13. Using the provided bolt, secure the intake tube mounting bracket (070124) to the heater hose mounting bracket and thermostat housing from step #12.



14. Remove the rear air box mounting bracket bolt shown.



15. Install the heat shield mounting bracket (070061) onto the air box mounting bracket and secure with the provided hardware.



16. Install the front heat shield bracket (070123) onto the lower front air box mounting location using the provided hardware.



17. Install the edge trim onto the heat shield as shown.

**NOTE: Some trimming of the edge trim will be necessary.**



18. Install the heat shield assembly into the vehicle and secure to the mounting brackets with the provided hardware.



19. Install the provided silicone hose (084036) onto the throttle body and secure with the provided hose clamp.



20. Install the provided vent fitting into the K&N® intake tube as shown.



21. Remove the mass air sensor from the stock air box.



22. Install the mass air sensor into the K&N® intake tube and secure with the provided hardware.



23. Install the K&N® intake tube into the silicone hose at the throttle body and align with the tube mounting bracket installed in step #13. Secure with the provided hose clamp and hardware.



24. Install the provided crankcase vent hose onto the valve cover port and then to the vent fitting on the K&N® intake tube.

**NOTE: Some trimming of the vent hose may be necessary.**



25. Install the K&N® air filter and secure with the provided hose clamp.

**NOTE: Drycharger® air filter wrap; part number RX-4990DK is available to purchase separately. To learn more about Drycharger® filter wraps or look up color availability please visit <http://www.knfilters.com>®.**



26. Reconnect the mass air sensor electrical connection.



27. Reconnect the vehicle's negative battery cable. Double check to make sure everything is tight and properly positioned before starting the vehicle.

28. It will be necessary for all K&N® high flow intake systems to be checked periodically for realignment, clearance and tightening of all connections. Failure to follow the above instructions or proper maintenance may void warranty.

#### ROAD TESTING:

1. Start the engine with the transmission in neutral or park, and the parking brake engaged. Listen for air leaks or odd noises. For air leaks secure hoses and connections. For odd noises, find cause and repair before proceeding. This kit will function identically to the factory system except for being louder and much more responsive.

2. Test drive the vehicle. Listen for odd noises or rattles and fix as necessary.

3. If road test is fine, you can now enjoy the added power and performance from your kit.

4. K&N Engineering, Inc., suggests checking the air filter element periodically for excessive dirt build-up. When the element becomes covered in dirt (or once a year), service it according to the instructions on the Recharger® service kit, part number 99-5050 or 99-5000

**STREET LEGAL IN MOST STATES**

**NOT LEGAL FOR USE IN CA & OTHER STATES  
ADOPTING CA EMISSIONS STANDARDS**

**See our catalog or [knfilters.com](http://knfilters.com) for CARB status on each part for a specific vehicle**

\* FREE K&N® decal To register your warranty, please see us online at [knfilters.com/register](http://knfilters.com/register). FREE K&N® decal \*